

Market DataUpdate



Food Security and Nutrition Analysis Unit - Somalia

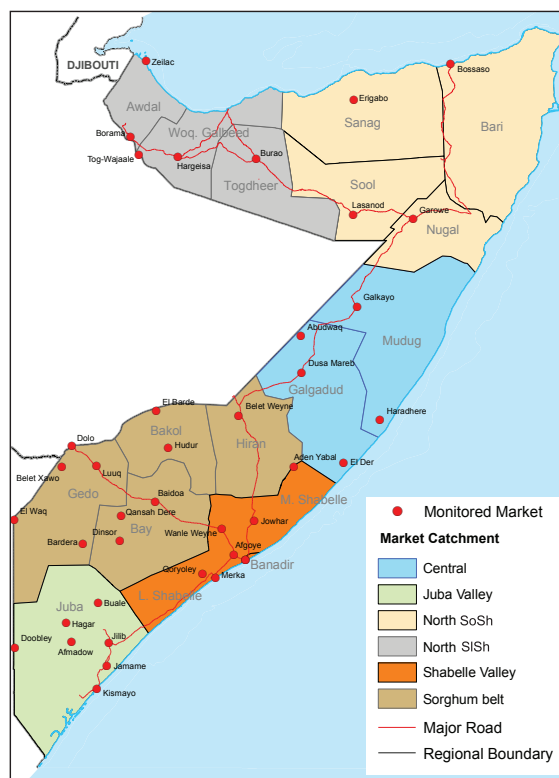


Issued February, 2012

Highlights

- **Inflation:** The monthly Consumer Price Index (CPI) decreased for the third consecutive month in most regions, except in Central and North Somaliland Shilling (SISh) zones where it sustained the January 2012 levels. The annual inflation rate was stable in the North Somaliland Shilling (SISh) zone but decreased by 10 to 20 percent in other zones. When compared to the base period (March 2007), the cost of living has increased significantly (120-141%) in Somali Shilling (SoSh) areas, while having risen moderately (16%) in SISh areas.
- **Exchange Rates:** SoSh appreciated slightly against the US dollar (USD) while the SISh remained at par with the benchmark USD in most markets over the last one month. Compared to the same month a year ago, the SISh depreciated against the USD but the SoSh, appreciated against the USD. This increased appreciation of the SoSh is mainly attributable to increased dollar inflows following the humanitarian response to the drought and famine, as well to the high earnings from the record high livestock exports in 2011.

Local grain prices: Maize and red sorghum prices declined in most markets in the South while remaining stable in Central and North over the last one month. The decrease in the prices of local cereals is mostly caused by increased supply of the *Deyr* 2011/12 crop harvest in the South. Notably, compared to a year ago, cereal prices are considerably lower in the South-Central, but significantly higher in the North due to the slow pace of deliveries of cereals from the southern regions as well the new use of mechanized threshing in Somaliland Shilling regions.



- **Prices of most imported commodities** declined in the last one month and also over the previous year throughout the country with a more pronounced trend experienced in Banadir (Mogadishu). The slowdown in the prices of these commodities is mainly due to the stronger SoSh currency, the increased supplies following the opening of the Mogadishu Port and to the ongoing humanitarian supplies in the South.
- **Livestock prices** remained stable to increased slightly in most markets when compared to their level a month ago. The rise in these prices in Mogadishu, and in the Central and Northern zones is mainly due to the increased demand and the low supply of saleable stock as most herders have moved away from the main markets in search of water and pasture. Current prices remained significantly higher than a year ago in most markets of the country.
- **Labour wages** were stable to increasing in February in most markets, due to ongoing agricultural labour opportunities during the harvest period. Labour wages are slightly higher than their levels a year ago in most markets.
- **Terms of Trade (ToT)** between labour wages and cereals improved in most markets from their level a month ago and also over the past year, implying strengthened purchasing power of poor households.

This Market Data Update is a monthly report that presents a compilation of tabulated graphical market information produced regularly as part of the monthly monitoring process.

The weekly price data is collected from 44 main markets throughout Somalia since 1995.

The 5-year period of 2003-07 was characterised by fairly stable prices and relatively low inflation. In this bulletin, these years are used as a reference period for seasonal trends comparison.

Market analysis is an integral part of all of FSNAU's Annual Food Security Projections and seasonal technical reports (Technical Reports on FSNAU Post Gu and Deyr Analysis).

This data is available online on www.fsnau.org/ids.

Technical and
Managerial Support



Funding Agencies



Regional Market Highlights

- **Juba Valley:** maize and imported food prices (rice, vegetable oil, sugar and wheat flour) prices declined in most markets, while livestock prices remained stable in the second month of the year. Similarly, the prices of these commodities are also slightly lower compared to a year ago, in contrast to livestock prices, which are significantly above their levels twelve months earlier. Monthly and annual comparisons for ToT between labor and cereals indicate gradual improvement in purchasing power, with 8kgs of maize able to be purchased by a day's worth of labour in February 2012.
- **Sorghum Belt:** local cereal prices declined significantly (43%) in Bay, and only slightly (7-13%) in Bakool, Gedo and Hiran in February 2012. Prices of imported and most of the other essential commodities declined marginally, while livestock prices exhibited a mixed pattern. Annual comparisons show significantly lower prices for food imports and for local cereals, but higher prices for livestock. The decline in labour wages was compensated by the significant reduction in cereal prices, enhancing the ToT between labour and cereals. Further, the ToT has more than doubled when compared to the same period last year and currently stands at about 16 kg of cereals for a daily wage.
- **Shabelle Valley:** similar to most other regions in the South, prices of monitored import commodities declined as those of maize and livestock were stable. The ToT remained at its January 2012 levels on the backdrop of stable wages, and is currently equivalent to 10kg/daily wage rate. The prices of most imported commodities and cereals are significantly lower, the reverse for livestock when compared to the same month year ago.
- **Central:** prices of imported commodities declined while those for livestock and cereals increased slightly in most main markets in February 2012. Imported commodities and cereals cost slightly less than they did a year ago in most markets, while goat prices have slightly improved. ToT (local goat/rice) improved over the month of February 2011, up to 43 kg/local goat, which is also higher (25%) than a year ago.
- **Northeast:** prices of cereals (red sorghum, white maize) indicated mixed trends but were generally stable, while the prices of imported and other essential commodities declined as livestock quotations (with the exception of local quality goats) surged slightly in the second month of 2012. Annual price comparisons show reduced prices for most commodities apart from livestock, red sorghum and other essentials, which are on the rise. ToT (local goat/rice) remained stable over the month of February 2012, but it is higher (19%) than a year ago, currently standing at 64 kg/local goat.
- **Northwest:** the increase in the prices of imported commodities and cereals slowed down as the prices of livestock and other essential commodities increased in February 2012. Prices of most monitored items are significantly above their levels a year ago. Though the ToT (white sorghums/wages) improved by 1 kg from a previous month to settle at 11kgs/daily wage rate, the purchasing power remained unchanged from the same month last year. ToT (local goat/rice) improved significantly (17%) over the last month, to settle at 47kg/local goat, almost at the same level a year ago.
- **Banadir:** prices decreased significantly for local cereals and for imported commodities while increasing for livestock in the last one month. The above prices are significantly below their levels a year ago. The ToT labour wage/cereal (rice) remained almost unchanged in the second first month of the year, but has almost doubled compared to the same month the previous year as a result of reduced cereal prices.

Table 1: Monthly and Annual Changes in Terms of Trade

Region	January 2011 (kg/daily wage)	December 2011 (kg/ daily wage)	January 2012 (kg/daily wage)	Monthly change (%)	Annual change (%)	Annual change
Bay	Red Sorghum	(kg/daily wage)	(kg/daily wage)	(kg/daily wage)	(%)	(%)
Bay	Red Sorghum	4	12	24	100%	500%
Bakool	Red Sorghum	4	8	9	13%	125%
Gedo	Red Sorghum	9	17	17	0%	89%
Hiraan	White Maize	6	13	9	-31%	50%
Juba	White Maize	5	7	8	14%	60%
Shabelle	White Maize	5	10	10	0%	100%
NE	Red Sorghum	5	5	5	0%	0%
NW	White Sorghum	10	10	11	10%	10%
Central	Red Sorghum	5	6	6	0%	20%

International Market Highlights*

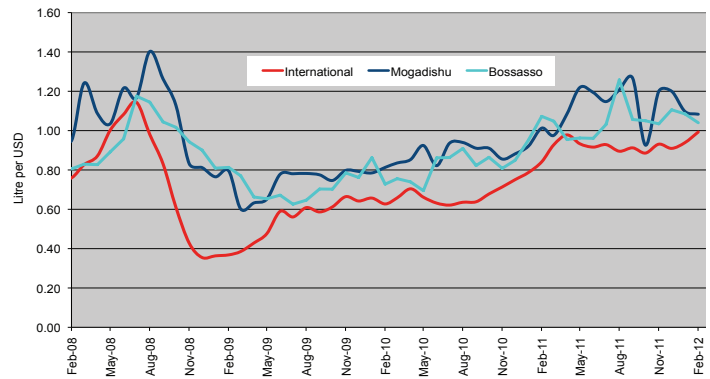
Diesel: Crude oil prices in Abu Dhabi/Dubai,¹ the main source of Somalia's oil imports, increased significantly (5%) from January 2011 to settle at USD 114/barrel in February 2012. The current quotation is 18 percent higher than the same month last year. This is the first time the prices have surged to record highs, surpassing the USD 110/ barrel level since April last year. The surge in quotations mainly reflect speculative dealings that inflated supply risk premiums, widespread geopolitical concerns, increasing economic optimism in the US and progress in the Euro-zone debt crisis². Locally (Bossaso and Mogadishu), diesel prices declined marginally when compared to last month and the same month last year <http://www.fsnau.org/ids>

Rice: Export prices of rice³ showed a slight (3%) monthly increase, closing at USD 530/ton in February 2012. The price quotations are also 22 percent higher than in February last year. The increase in the prices of Thai rice on the international price appreciation was driven by domestic policy support. Notably, in other markets rice prices remained under downward pressure on generally weak import demand and stiff competition among exporters⁴. In line with international price trends, coupled with reduced domestic demand due to increased availability of locally-produced cereals, retail prices of imported rice eased in the last one month (9-14%) and remained stable to declining when compared to the same month a year ago in Somali port towns of Bossaso and Mogadishu.

Sugar: The **FAO Sugar Price Index**⁵ rose to 342 points in February, 2.4 percent (8 points) up from January, but still remained 18 percent (76 points) lower than a year ago. Last month's increase was largely driven by unfavourable weather conditions in Brazil, the world's largest producer and exporter of sugar, and fears that these would delay harvest and lead to short-term tightness in the market. However, large production harvests in India, the EU, Thailand and the Russian Federation kept prices from increasing further. The effect of the international price developments of the last month have not yet transmitted to the local port markets of Somalia where sugar prices remain stable. However, in Mogadishu sugar prices exhibited significant annual (25%) decline, likely due to sustained humanitarian assistance and opening up of Mogadisu Port.

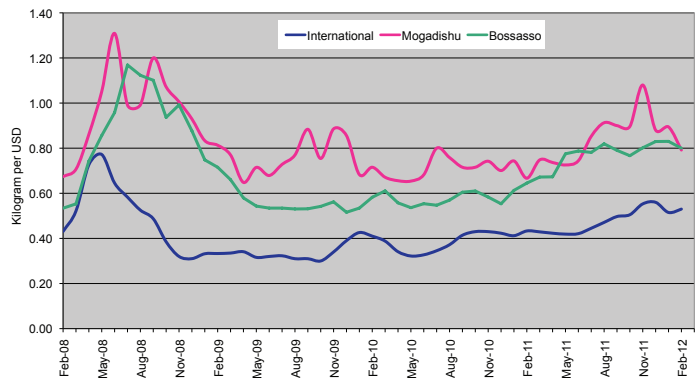
Cooking Oil: The **FAO Oils/Fats Price Index**⁶ registered another gain in February to 239 points, 2 percent (5 points) higher than in January. However, the index remained 15 percent lower when compared to a year ago. Poor monthly production growth in palm oil, together with the prospect of a tight supply and demand balance for total vegetable oils in 2011/12 have driven up the index. In particular, lower production forecasts for soy oil, which pushed down expected global soy oil export availabilities to a multi-year low, have supported prices. International price transmission in cooking oil is evident in port cities of Somalia where vegetable oil price increased slightly (2%) over the previous month, but modestly (15%) in the last one year in Bossaso. In contrast, vegetable oil prices reduced slightly in Mogadishu in the month of February but significantly (25%) when compared to year ago, on the backdrop of on-going humanitarian interventions and opening up of Mogadisu Port.

Figure 1: Diesel Prices: Dubai, Mogadishu and Bossaso



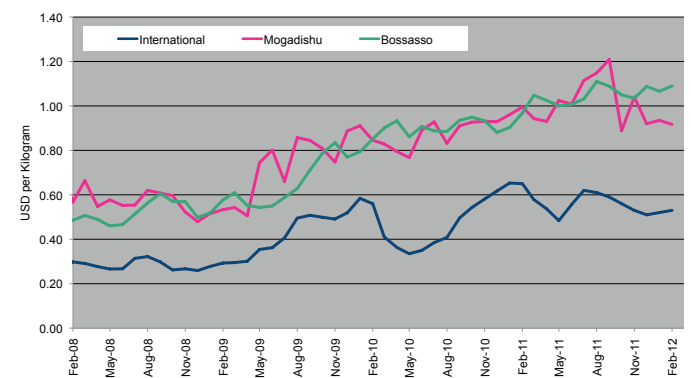
Source: FAO Statistics, FEWSNET and FSNAU Market Price Monitoring System, 2012

Figure 2: Rice Prices: Bangkok FOB, Mogadishu and Bossaso Markets



Source: FAO Statistics, FEWSNET and FSNAU Market Price Monitoring System, 2012

Figure 3: Sugar Prices: ISO, Mogadishu and Bossaso Markets



Source: FAO Statistics, FEWSNET, ISO and FSNAU Market Price Monitoring System, 2012

1 Weekly Abu Dhabi Murban Spot Price FOB (Dollars per Barrel), US Energy Information Administration, http://www.eia.doe.gov/dnav/pet/pet_pri_wco_k_w.htm

2 OPEC Monthly Oil Market Report, March 2012; http://www.opec.org/opec_web/static_files_project/media/downloads/publications/MOMR_March_2012.pdf

3 Bangkok, Rice (Thai A1 Super 1/B), Export, US Dollar, Tonne, FAO Food Price Index, February 2012

4 FAO Food Price Index, March 2012; International Grain Council Grain Market Report (GMR No. 419), 23 Feb 2012; <http://www.igc.int/en/downloads/gmrsummary/gmrsumme.pdf>

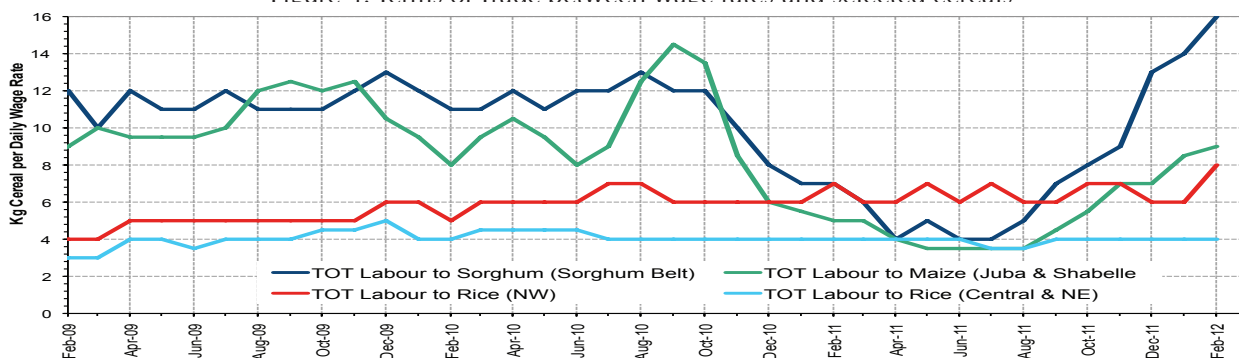
5 FAO Food Price Index, February 2012

6 FAO Food Price Index, February 2012

* Domestic prices in the text are in local currency

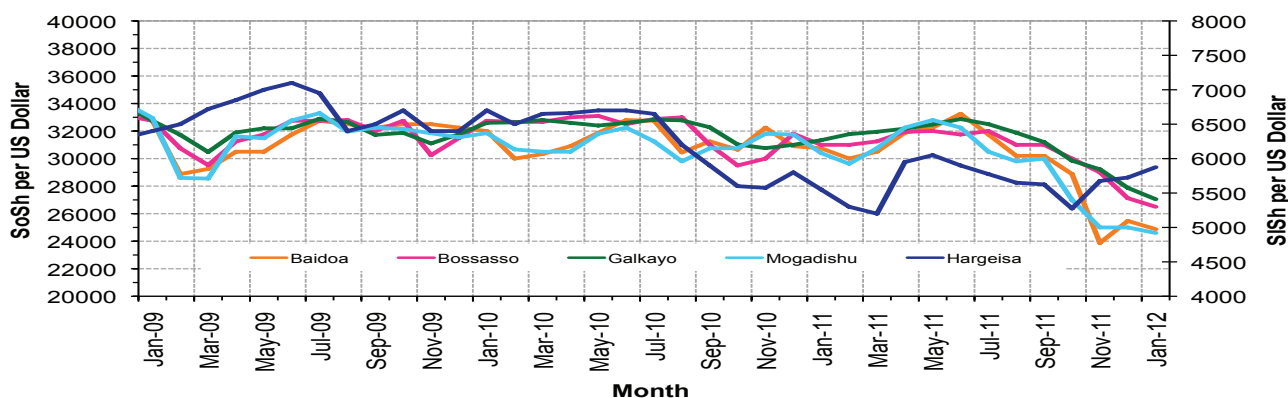
National Trends: CPI, Exchange Rates, Cereal Prices and Relative Purchasing Power

Figure 4: Terms of Trade between wage rates and selected cereals



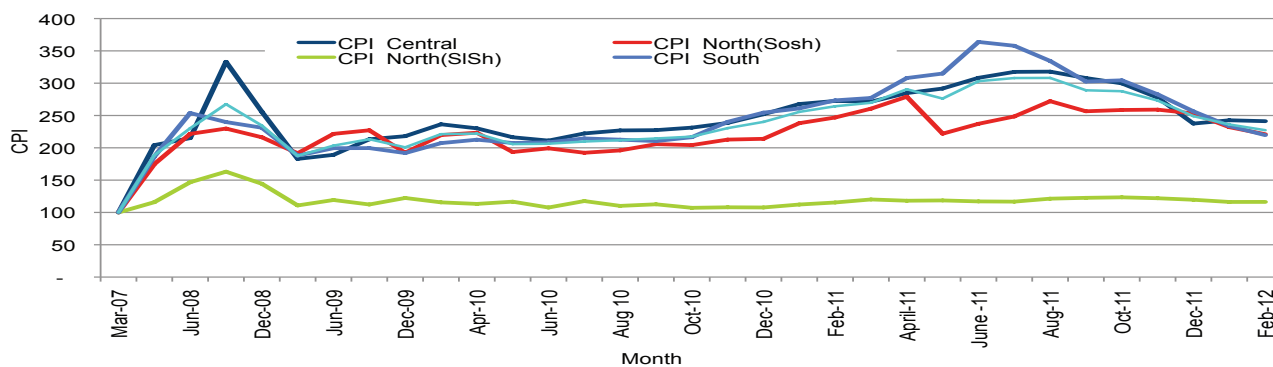
* Purchasing power is improving significantly

Figure 5: Monthly Exchange Rate for Selected Regions (SoSh and SiSh to USD)



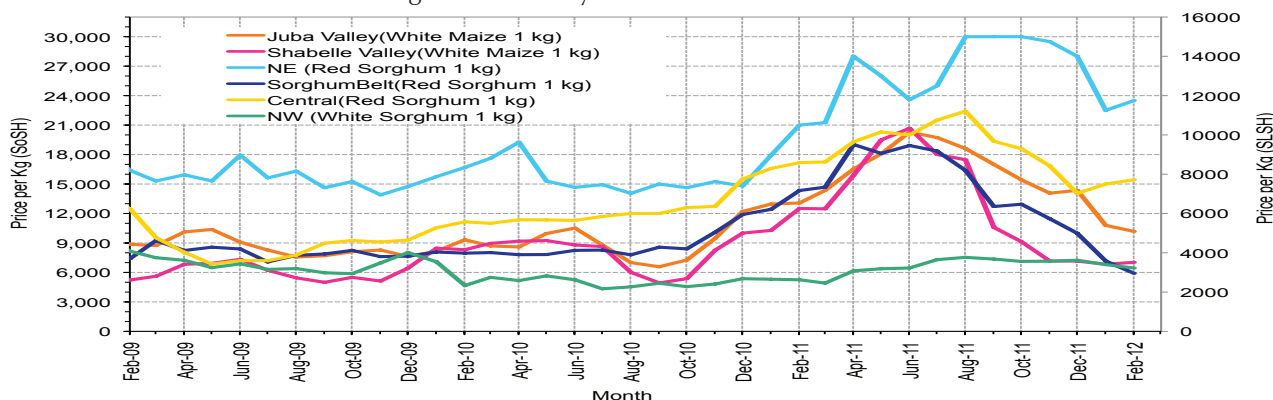
*SoSh continues strengthening against the USD although SoSh is marginally depreciating

Figure 6: Monthly Trends in Consumer Price Index (CPI, March 2007=100)



*Inflation is slowly easing in SoShs regions but stable in Somaliland

Figure 7: Monthly Trends in Local Cereal Prices



*Local cereals continue on a downward trend in most regions

Regional analysis: Juba Regions

Indicator	Feb-11	Jan-12	Feb-12 Nominal Price	Feb-12 Real (Deflated) Price	% Change Same Month Previous	% Change Previous Month	% Change 5-year avrg (2003-07)
Imported Commodities Prices							
Diesel 1 litre	32,393	30,821	30,393	13,737	-6%	-1%	175%
Imported Red Rice 1kg	21,429	21,171	19,536	8,794	-9%	-8%	177%
Petrol 1 litre	34,179	33,314	34,679	15,689	1%	4%	166%
Sugar	29,464	25,436	23,107	10,420	-22%	-9%	200%
Vegetable Oil 1 litre	52,714	45,525	43,571	19,737	-17%	-4%	161%
Wheat Flour 1kg	18,857	18,100	17,964	8,079	-5%	-1%	153%
Wheat Grain 1kg	16,000	18,000	-	-	-	-	-
Cereal Prices							
Red Sorghum 1kg	-	7,000	-	-	-	-	-
White Maize 1kg	13,071	10,794	10,170	4,530	-22%	-6%	346%
Livestock & Livestock Product Prices							
Camel Local Quality (Head)	6,879,167	9,580,834	9,475,500	4,313,900	38%	-1%	208%
Cattle Local Quality (Head)	1,650,000	3,592,343	3,472,572	1,580,891	110%	-3%	170%
Fresh Camel Milk 1 litre	24,750	17,807	18,250	8,209	-26%	2%	197%
Goat Export Quality (Head)	819,792	1,343,229	1,321,036	601,341	61%	-2%	253%
Goat Local Quality (Head)	489,107	856,286	834,857	379,993	71%	-3%	219%
Other Essential Items							
Charcoal 50kg	68,036	75,600	82,679	37,542	22%	9%	164%
Cowpeas 1 kg	25,550	32,941	30,127	13,616	18%	-9%	452%
Unskilled Labor Wage Rate	70,357	79,164	84,500	38,371	20%	7%	189%
Firewood Bundle	6,143	7,957	8,107	3,591	32%	2%	259%
Local Sesame Oil 1 litre	75,786	78,600	75,125	34,103	-1%	-4%	291%
Exchange Rate (Somali Shilling per USD)	30,208	24,370	24,171	10,905	-20%	-1%	59%
Construction Materials*							
Cement 50kg	391,429	274,160	273,417	124,381	-30%	0%	-
Cooking Pot Aluminium 7 Litre	297,000	324,571	314,143	142,923	6%	-3%	-
Galvanised Iron Sheet Ga 26	160,714	147,992	147,142	66,891	-8%	-1%	-
Hollow Concrete Block 10cm x 20cm x 40cm	20,000	-	15,125	-	-	-	-
Non Collapsible Jerrycan 10 Litre	30,000	38,800	34,583	15,645	15%	-11%	-
Plastic Tarpaulin 14m x 5 m	600,000	390,600	379,000	172,451	-37%	-3%	-
Roofing Nails 15Kg	804,286	552,800	545,000	248,027	-32%	-1%	-
Timber 2in x 4in x 20ft	334,000	261,580	295,438	134,407	-12%	13%	-
Woven Dry Raised Blanket 150cm x 200cm	-	40,500	42,500	-	-	5%	-
Terms of Trade							
Labour Wage (Daily)/ Cereal (Maize(Kg))	5	7	8	-	54%	13%	-35%
Local Goat (Head)/ Cereal (Maize(Kg))	37	79	82	-	119%	3%	-29%
Price Indices							
Consumer Price Index	273	234	220	-	-20%	-6%	-
Purchasing Power Index	0.37	0.43	0.46	-	24%	7%	-

* Data has been collected since May 2010

Figure 8: Imported commodity prices compared to exchange rates

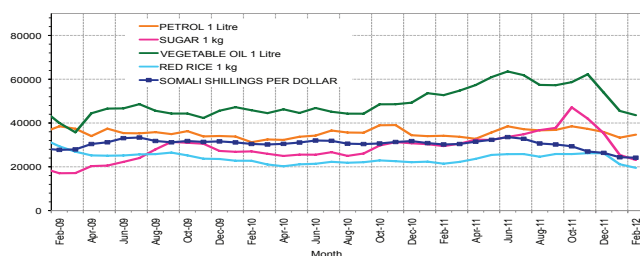


Figure 10: Goat Local Quality

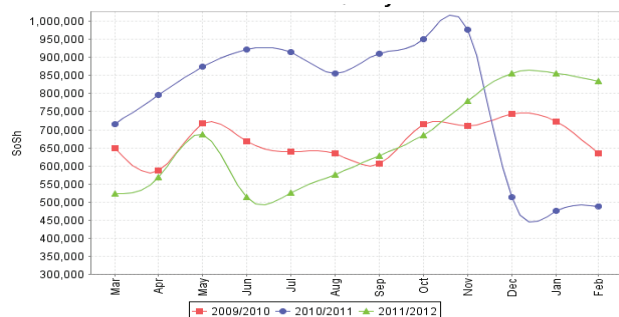


Figure 12: Water Drum

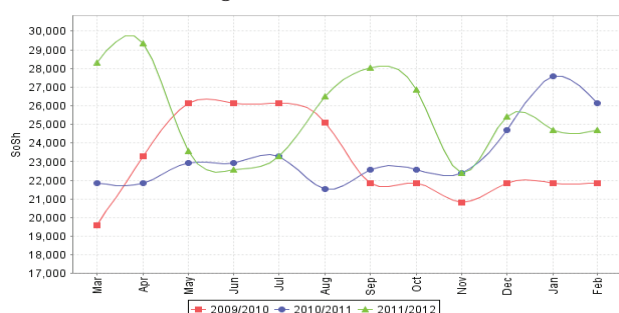


Figure 9: Trends in wage rates, staple cereal prices and relative purchasing power

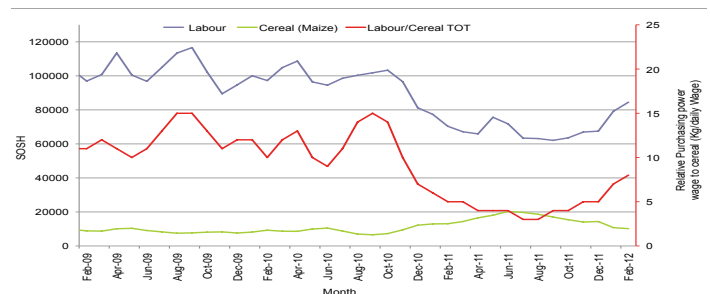


Figure 11: Exchange Rate

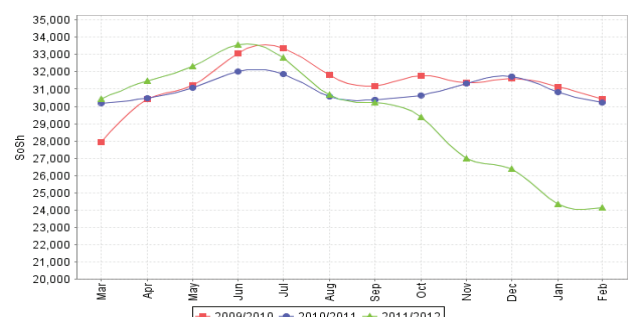
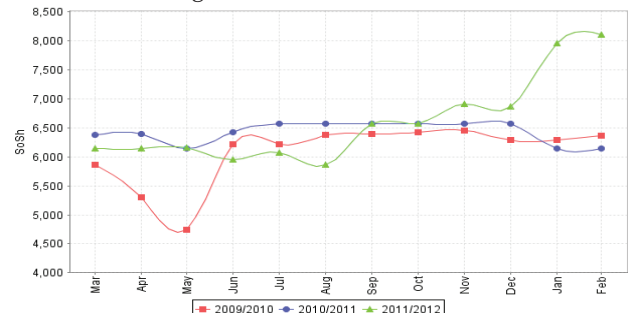


Figure 13: Firewood Bundle



Regional analysis: Sorghum Belt Regions (Bay, Bakool, Gedo and Hiran)

Indicator	Feb-11	Jan-12	Feb-12 Nominal Price	Feb-12 Real (Deflated) Price	% Change Same Month Previous	% Change Previous Month	% Change 5-year avrg (2003-07)
Imported Commodities Prices							
Diesel 1 litre	33,273	37,318	34,739	15,716	4%	-7%	212%
Imported Red Rice 1kg	23,955	23,655	22,227	10,019	-7%	-6%	187%
Petrol 1 litre	30,975	36,250	35,023	15,845	13%	-3%	165%
Sugar	31,841	28,477	26,750	12,079	-16%	-6%	204%
Vegetable Oil 1 litre	51,409	46,455	48,118	21,807	-6%	4%	174%
Wheat Flour 1kg	20,909	19,864	19,205	8,644	-8%	-3%	149%
Wheat Grain 1kg	16,125	8,063	7,208	3,182	-55%	-11%	99%
Cereal Prices							
Red Sorghum 1kg	14,339	7,163	5,905	2,588	-59%	-18%	235%
White Maize 1kg	13,898	8,041	7,509	3,319	-46%	-7%	257%
Livestock & Livestock Product Prices							
Camel Local Quality (Head)	7,163,637	10,978,890	11,251,390	5,122,426	57%	2%	273%
Cattle Local Quality (Head)	1,090,000	3,167,857	3,109,375	1,415,534	185%	-2%	158%
Fresh Camel Milk 1 litre	26,636	20,386	22,205	10,009	-17%	9%	251%
Goat Export Quality (Head)	1,013,409	1,537,909	1,525,000	694,201	50%	-1%	317%
Goat Local Quality (Head)	519,091	1,020,705	1,077,273	490,360	108%	6%	352%
Other Essential Items							
Charcoal 50kg	110,795	138,818	159,045	72,310	44%	15%	367%
Cowpeas 1 kg	30,281	25,375	24,156	10,898	-20%	-5%	421%
Unskilled Labor Wage Rate	95,568	100,682	93,432	42,438	-2%	-7%	396%
Firewood Bundle	5,182	5,114	5,864	2,570	13%	15%	251%
Local Sesame Oil 1 litre	77,679	80,292	71,321	32,371	-8%	-11%	225%
Exchange Rate (Somali Shilling per USD)	30,320	24,786	25,300	11,419	-17%	2%	60%
Construction Materials*							
Cement 50kg	339,250	363,500	359,000	163,345	6%	-1%	-
Cooking Pot Aluminium 7 Litre	334,250	296,000	298,250	135,687	-11%	1%	-
Galvanised Iron Sheet Ga 26	202,045	196,136	194,091	88,266	-4%	-1%	-
Hollow Concrete Block 10cm x 20cm x 40cm	11,000	12,100	12,083	5,401	10%	0%	-
Non Collapsible Jerrycan 10 Litre	52,500	55,000	55,000	24,940	5%	0%	-
Plastic Tarpaulin 14m x 5 m	311,600	285,750	286,000	130,110	-8%	0%	-
Roofing Nails 15kg	830,972	789,545	789,045	359,136	-5%	0%	-
Timber 2in x 4in x 20ft	265,714	282,656	290,250	132,045	9%	3%	-
Woven Dry Raised Blanket 150cm x 200cm	114,167	97,143	92,143	41,851	-19%	-5%	-
Terms of Trade							
Labour Wage (Daily)/ Cereal (Sorghum(Kg))	7	14	16	-	137%	13%	48%
Local Goat (Head)/ Cereal (Sorghum(Kg))	36	142	182	-	404%	28%	35%
Price Indices							
Consumer Price Index	273	234	220	-	-20%	-6%	-
Purchasing Power Index	0.37	0.43	0.46	-	24%	7%	-

Figure 14: Imported commodity prices compared to exchange rates

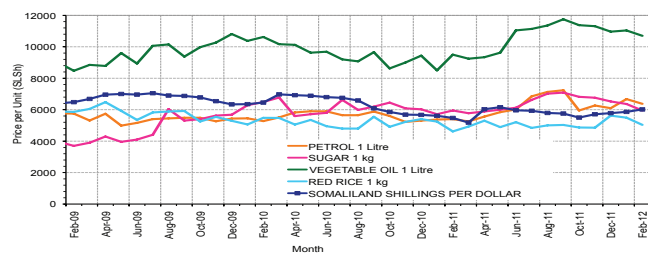


Figure 16: Goat Local Quality

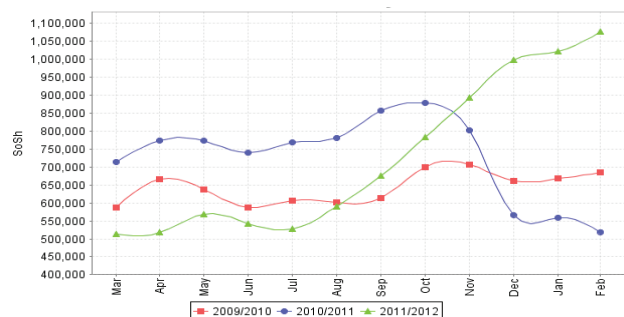


Figure 18: Water Drum

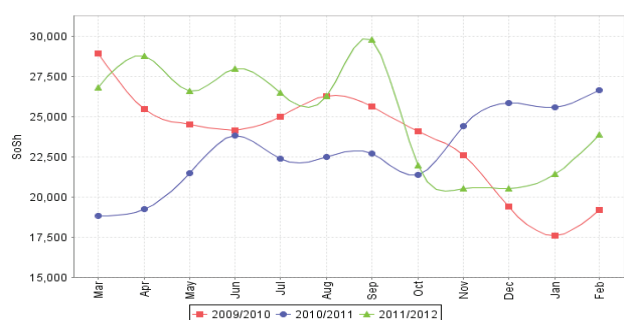


Figure 15: Trends in wage rates, staple cereal prices and relative purchasing power

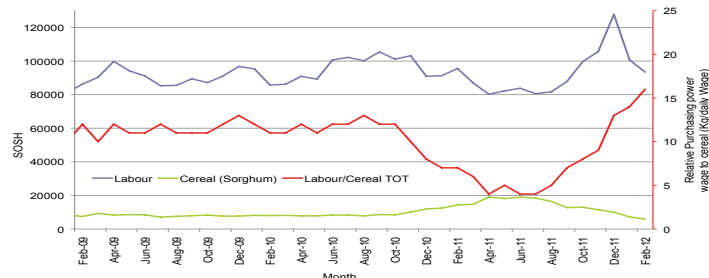


Figure 17: Exchange Rate

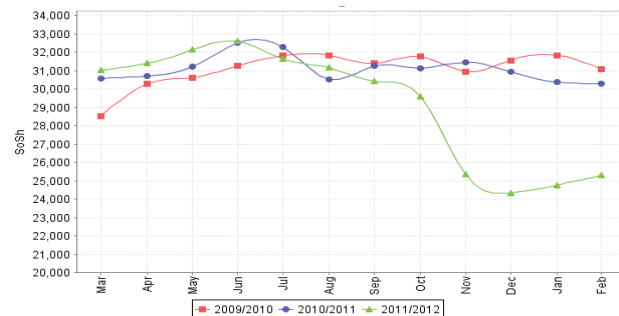
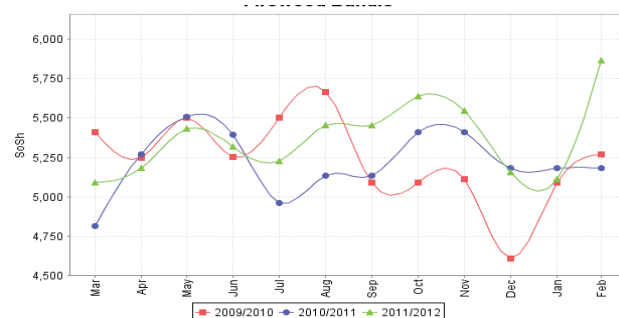


Figure 19: Firewood Bundle



Regional analysis: Shabelle Regions

Indicator	Feb-11	Jan-12	Feb-12 Nominal Price	Feb-12 Real (Deflated) Price	% Change Same Month Previous	% Change Previous Month	% Change 5-year avg (2003-07)
Imported Commodities Prices							
Diesel 1 litre	31,250	31,625	30,250	13,672	-3%	-4%	262%
Imported Red Rice 1kg	20,750	20,583	19,208	8,645	-7%	-7%	211%
Petrol 1 litre	31,667	34,458	37,208	16,840	17%	8%	254%
Sugar	30,125	23,208	23,042	10,391	-24%	-1%	218%
Vegetable Oil 1 litre	46,583	37,833	37,042	16,764	-20%	-2%	181%
Wheat Flour 1kg	18,833	16,417	14,667	6,578	-22%	-11%	144%
Wheat Grain 1kg	-	12,000	13,333	-	-	11%	-
Cereal Prices							
Red Sorghum 1kg	13,707	12,735	10,769	4,803	-21%	-15%	415%
White Maize 1kg	12,511	6,835	7,030	3,101	-44%	3%	193%
Livestock & Livestock Product Prices							
Camel Local Quality (Head)	11,300,000	14,510,000	14,255,000	6,489,908	26%	-2%	273%
Cattle Local Quality (Head)	2,715,000	4,285,000	4,235,000	1,928,008	56%	-1%	267%
Fresh Camel Milk 1 litre	20,458	18,917	17,208	7,734	-16%	-9%	271%
Goat Export Quality (Head)	1,220,000	1,833,750	1,700,313	774,018	39%	-7%	247%
Goat Local Quality (Head)	959,167	1,208,750	1,252,500	570,137	31%	4%	286%
Other Essential Items							
Charcoal 50kg	109,278	111,500	133,139	60,515	22%	19%	230%
Cowpeas 1 kg	26,542	24,872	25,233	11,388	-5%	1%	469%
Unskilled Labor Wage Rate	57,250	68,750	67,917	30,821	19%	-1%	261%
Firewood Bundle	4,167	5,625	5,625	2,461	35%	0%	179%
Local Sesame Oil 1 litre	60,667	60,042	55,083	24,978	-9%	-8%	205%
Exchange Rate (Somali Shilling per USD)	29,846	25,088	24,892	11,233	-17%	-1%	55%
Construction Materials*							
Cement 50kg	260,750	231,250	216,250	98,354	-17%	-6%	-
Cooking Pot Aluminium 7 Litre	690,000	700,000	700,000	318,596	1%	0%	-
Galvanised Iron Sheet Ga 26	118,800	97,350	95,500	43,379	-20%	-2%	-
Hollow Concrete Block 10cm x 20cm x 40cm	13,750	12,750	12,917	5,781	-6%	1%	-
Non Collapsible Jerrycan 10 Litre	53,000	49,375	46,125	20,900	-13%	-7%	-
Plastic Tarpaulin 14m x 5 m	275,000	261,667	267,500	121,687	-3%	2%	-
Roofing Nails 15Kg	642,500	596,000	563,700	256,541	-12%	-5%	-
Timber 2in x 4in x 20ft	58,550	51,050	48,450	21,958	-17%	-5%	-
Woven Dry Raised Blanket 150cm x 200cm	75,000	62,083	60,583	27,482	-19%	-2%	-
Terms of Trade							
Labour Wage (Daily)/ Cereal (Maize(Kg))	5	10	10	-	111%	-4%	23%
Local Goat (Head)/ Cereal (Maize(Kg))	77	177	178	-	132%	1%	32%
Price Indices							
Consumer Price Index	273	234	220	-	-20%	-6%	-
Purchasing Power Index	0.37	0.43	0.46	-	24%	7%	-

* Data has been collected since May 2010

Figure 20: Imported commodity prices compared to exchange rates

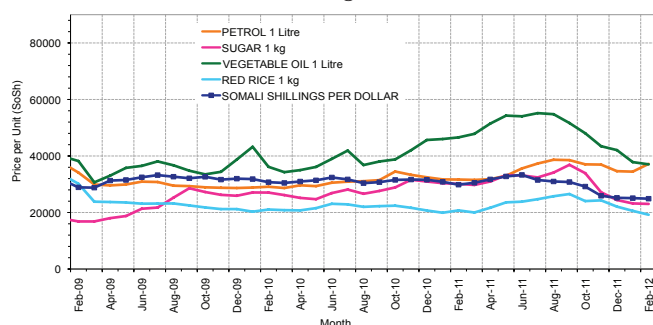


Figure 22: Goat Local Quality

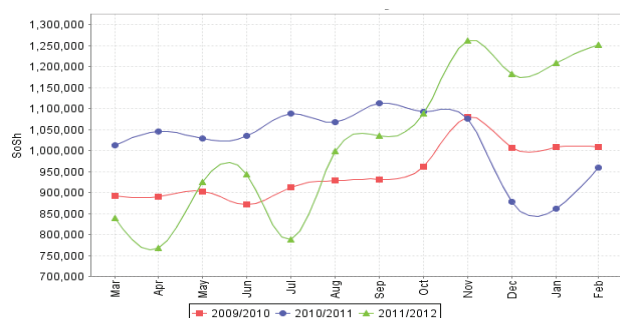


Figure 24: Water Drum

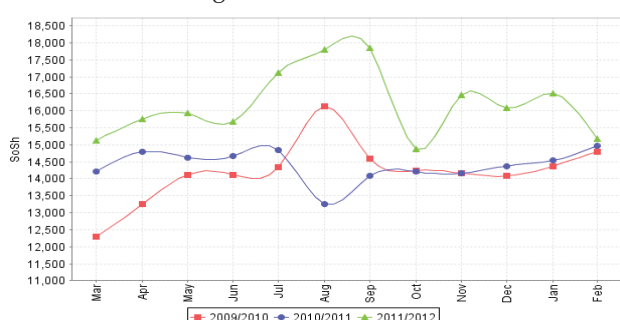


Figure 21: Trends in wage rates, staple cereal prices and relative purchasing power

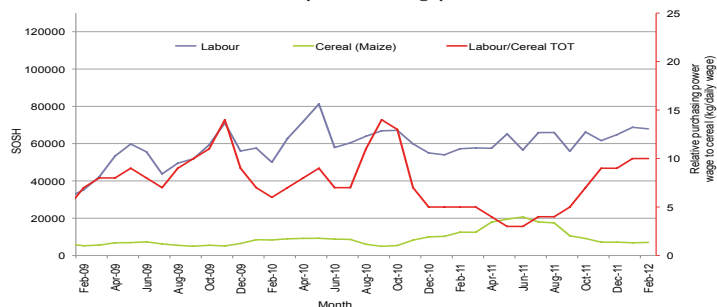


Figure 23: Exchange Rate

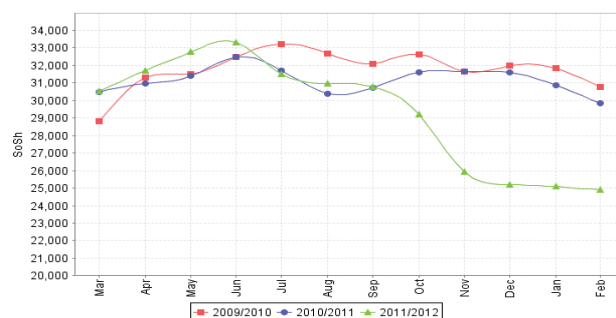
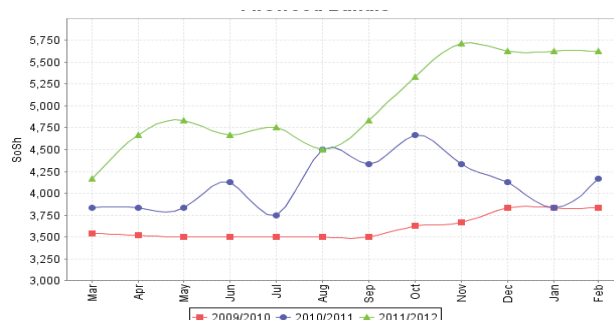


Figure 25: Firewood Bundle



Regional analysis:Banadir Region

Indicator	Feb-11	Jan-12	Feb-12 Nominal Price	Feb-12 Real (Deflated) Price	% Change Same Month Previous	% Change Previous Month	% Change 5-year avrg (2003-07)
Imported Commodities Prices							
Diesel 1 litre	29,125	26,417	25,250	11,396	-13%	-4%	218%
Imported Red Rice 1kg	22,458	20,208	17,000	7,640	-24%	-16%	189%
Petrol 1 litre	29,000	29,750	29,750	13,445	3%	0%	208%
Sugar	29,333	20,500	20,583	9,271	-30%	0%	215%
Vegetable Oil 1 litre	48,250	38,042	36,000	16,290	-25%	-5%	176%
Wheat Flour 1kg	18,125	13,375	13,667	6,122	-25%	2%	147%
Wheat Grain 1kg	17,000	11,444	12,683	5,674	-25%	11%	217%
Cereal Prices							
Red Sorghum 1kg	13,167	8,027	7,081	3,124	-46%	-12%	269%
White Maize 1kg	13,211	8,597	8,575	3,804	-35%	0%	221%
Livestock & Livestock Product Prices							
Camel Local Quality (Head)	16,000,000	11,000,000	12,000,000	5,463,253	-25%	9%	97%
Cattle Local Quality (Head)	3,925,000	3,000,000	4,000,000	1,821,018	2%	33%	41%
Fresh Camel Milk 1 litre	24,917	20,354	19,854	8,939	-20%	-2%	346%
Goat Export Quality (Head)	1,650,000	1,600,000	1,800,000	819,403	9%	13%	-
Goat Local Quality (Head)	1,673,750	1,481,250	1,581,250	719,811	-6%	7%	190%
Other Essential Items							
Charcoal 50kg	141,125	152,500	153,542	69,805	9%	1%	54%
Cowpeas 1 kg	28,164	25,896	23,517	10,607	-16%	-9%	460%
Unskilled Labor Wage Rate	71,250	90,958	88,750	40,306	25%	-2%	61%
Firewood Bundle	6,792	8,083	7,875	3,485	16%	-3%	-80%
Local Sesame Oil 1 litre	65,500	58,958	57,708	26,173	-12%	-2%	219%
Exchange Rate (Somali Shilling per USD)	30,000	25,029	24,392	11,005	-19%	-3%	49%
Construction Materials*							
Cement 50kg	218,928	187,750	180,267	81,972	-18%	-4%	-
Cooking Pot Aluminium 7 Litre	180,000	313,125	335,000	152,419	86%	7%	-
Galvanised Iron Sheet Ga 26	112,561	90,854	87,354	39,670	-22%	-4%	-
Hollow Concrete Block 10cm x 20cm x 40cm	9,375	8,708	8,958	3,978	-4%	3%	-
Non Collapsible Jerrycan 10 Litre	47,500	35,250	38,438	17,400	-19%	9%	-
Plastic Tarpaulin 14m x 5 m	255,000	226,667	228,267	103,825	-10%	1%	-
Roofing Nails 15Kg	472,506	517,921	484,892	220,661	3%	-6%	-
Timber 2in x 4in x 20ft	158,285	139,375	134,833	61,287	-15%	-3%	-
Woven Dry Raised Blanket 150cm x 200cm	99,000	82,917	103,583	47,059	5%	25%	-
Terms of Trade							
Labour Wage (Daily)/ Cereal (Maize(Kg))	5	11	10	-	92%	-2%	-50%
Local Goat (Head)/ Cereal (Maize(Kg))	127	172	184	-	46%	7%	-10%
Price Indices							
Consumer Price Index	273	234	220	-	-20%	-6%	-
Purchasing Power Index	0.37	0.43	0.46	-	-	-	-

Figure 26: Bakara: Imported Commodity Prices compared to Exchange Rate

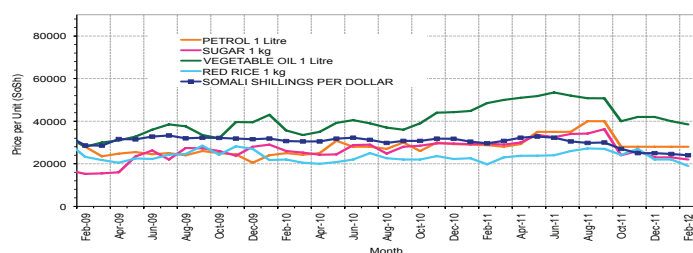


Figure 28: Goat Local Quality

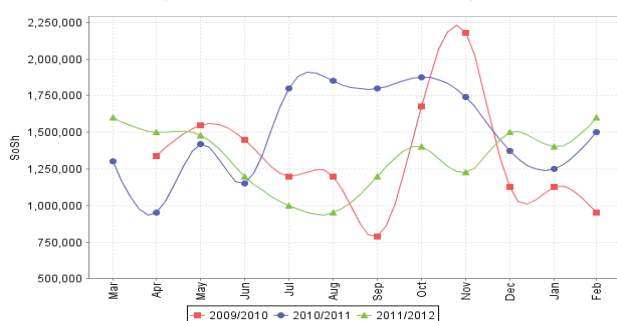


Figure 30: Wheat Flour

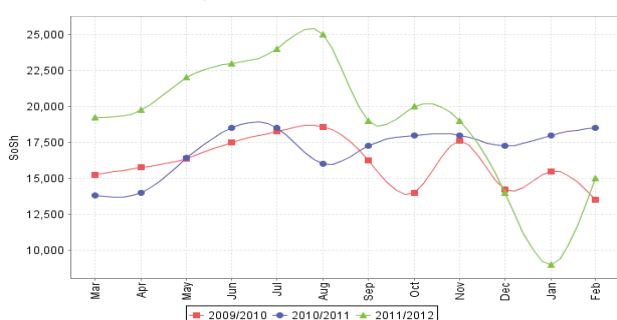


Figure 27: Bakara: Trends in Wage Rates, Staple Cereal Prices and Relative Purchasing Power

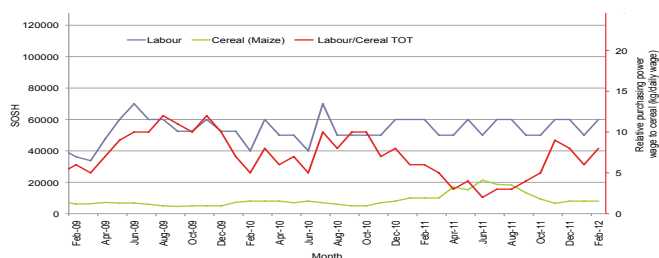


Figure 29: Exchange Rate

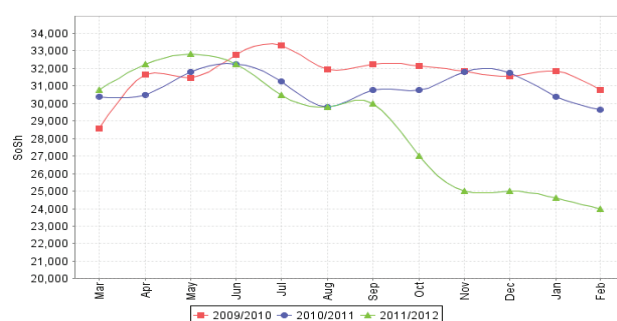
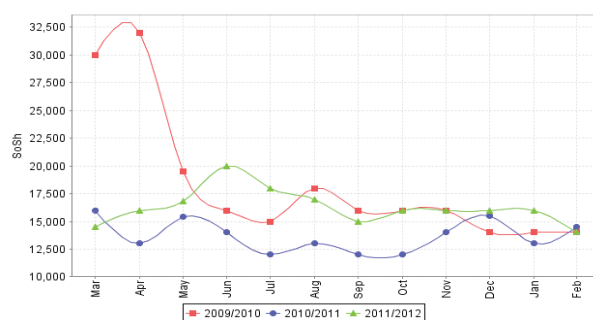


Figure 31: Fresh Camel Milk



Regional analysis: Central Regions

Indicator	Feb-11	Jan-12	Feb-12 Nominal Price	Feb-12 Real (Deflated) Price	% Change Same Month Previous	% Change Previous Month	% Change 5-year avg (2003-07)
Imported Commodities Prices							
Diesel 1 litre	35,450	34,050	33,240	13,681	-6%	-2%	242%
Imported Red Rice 1kg	28,400	27,450	25,880	10,629	-9%	-6%	267%
Petrol 1 litre	31,850	29,750	30,600	12,586	-4%	3%	180%
Sugar	35,280	30,600	28,840	11,857	-18%	-6%	224%
Vegetable Oil 1 litre	58,750	54,000	51,200	21,127	-13%	-5%	197%
Wheat Flour 1kg	22,820	20,900	20,240	8,291	-11%	-3%	178%
Wheat Grain 1kg	18,333	17,500	17,867	7,307	-3%	2%	177%
Cereal Prices							
Red Sorghum 1kg	17,175	15,000	15,440	6,301	-10%	3%	279%
White Maize 1kg	18,250	16,300	17,120	6,998	-6%	5%	307%
Livestock & Livestock Product Prices							
Camel Local Quality (Head)	7,787,500	7,812,500	8,550,000	3,544,614	10%	9%	286%
Cattle Local Quality (Head)	-	2,400,000	2,400,000	-	-	-	-
Fresh Camel Milk 1 litre	42,600	31,600	33,720	13,880	-21%	7%	257%
Goat Export Quality (Head)	1,458,333	1,479,167	1,517,500	629,035	4%	3%	329%
Goat Local Quality (Head)	977,400	1,043,000	1,116,400	462,744	14%	7%	298%
Other Essential Items							
Charcoal 50kg	220,000	185,500	183,600	76,018	-17%	-1%	256%
Cowpeas 1 kg	36,400	39,200	32,480	13,366	-11%	-17%	403%
Unskilled Labor Wage Rate	80,000	88,500	85,200	35,223	6%	-4%	154%
Firewood Bundle	33,800	35,000	34,000	13,996	1%	-3%	926%
Local Sesame Oil 1 litre	95,000	93,000	92,400	38,208	-3%	-1%	226%
Exchange Rate (Somali Shilling per USD)	30,775	26,385	25,068	10,293	-19%	-5%	55%
Construction Materials*							
Cement 50kg	328,000	312,000	299,600	124,110	-9%	-4%	-
Cooking Pot Aluminium 7 Litre	408,000	383,500	398,000	164,905	-2%	4%	-
Galvanised Iron Sheet Ga 26	155,775	147,250	135,600	56,118	-13%	-8%	-
Hollow Concrete Block 10cm x 20cm x 40cm	16,200	16,188	17,050	6,969	5%	5%	-
Non Collapsible Jerrycan 10 Litre	50,000	51,000	51,400	21,210	3%	1%	-
Plastic Tarpaulin 14m x 5 m	306,000	297,900	272,000	112,667	-11%	-9%	-
Roofing Nails 15Kg	811,940	782,150	742,600	307,772	-9%	-5%	-
Timber 2in x 4in x 20ft	151,600	141,500	135,000	55,869	-11%	-5%	-
Woven Dry Raised Blanket 150cm x 200cm	134,000	129,600	128,800	53,299	-4%	-1%	-
Terms of Trade							
Labour Wage (Daily)/ Cereal (Rice(Kg))	3	3	3	-	17%	2%	-31%
Local Goat (Head)/ Cereal (Rice(Kg))	34	38	43	-	25%	14%	8%
Camel (Head)/Cereal (Kg)	274	285	330	-	20%	16%	5%
Price Indices							
Consumer Price Index	273	243	241	-	-11%	-1%	-
Purchasing Power Index	0.37	0.41	0.41	-	13%	1%	-

* Data has been collected since May 2010

Figure 32: Imported commodity prices compared to exchange rates

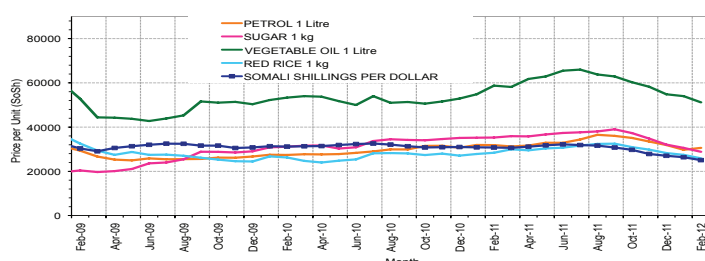


Figure 33: Trends in wage rates, staple cereal prices and relative purchasing power

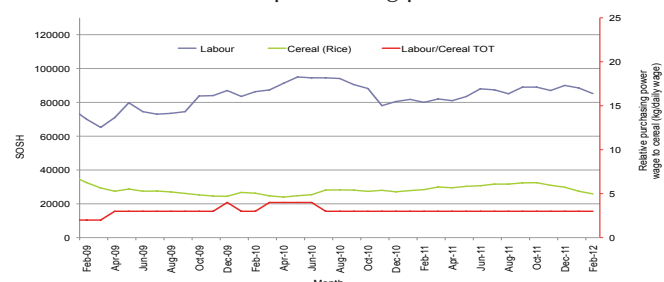


Figure 34: Goat Local Quality

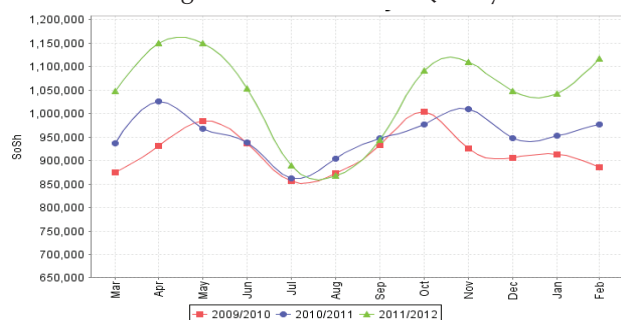


Figure 35: Exchange Rate

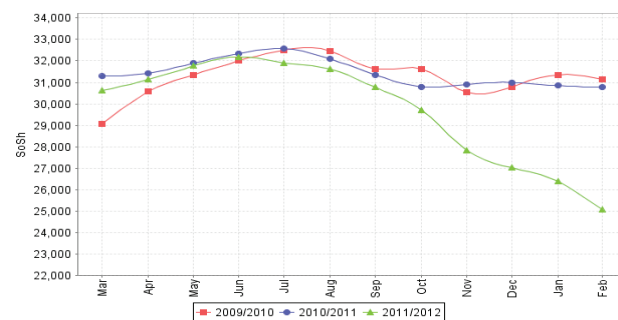


Figure 36: Water Drum

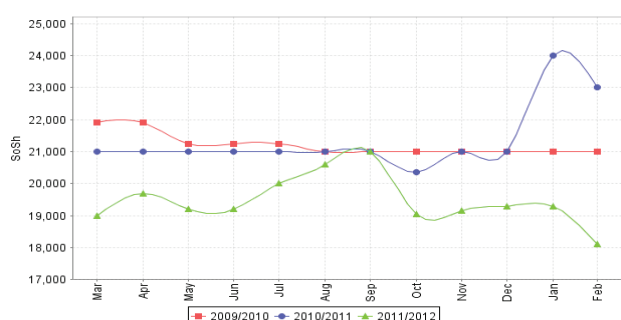
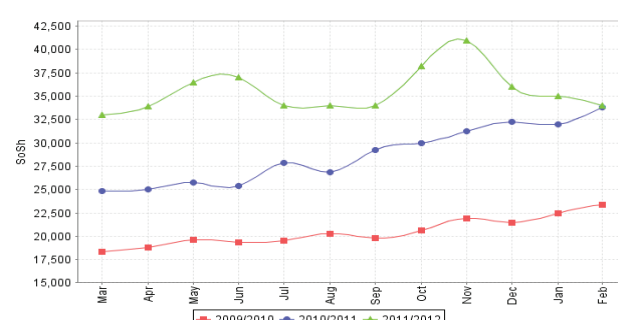


Figure 37: Firewood Bundle



Regional analysis: Northeast Regions

Indicator	Feb-11	Jan-12	Feb-12 Nominal Price	Feb-12 Real (Deflated) Price	% Change Same Month Previous	% Change Previous Month	% Change 5-year avrg (2003-07)
Imported Commodities Prices							
Diesel 1 litre	32,313	30,438	28,250	12,680	-13%	-7%	245%
Imported Red Rice 1kg	22,375	22,175	21,438	9,598	-4%	-3%	249%
Petrol 1 litre	28,188	27,725	26,500	11,888	-6%	-4%	183%
Sugar	31,250	28,463	27,250	12,228	-13%	-4%	229%
Vegetable Oil 1 litre	51,375	54,313	53,625	24,159	4%	-1%	225%
Wheat Flour 1kg	19,875	19,263	18,688	8,354	-6%	-3%	180%
Wheat Grain 1kg	28,875	25,625	25,500	11,436	-12%	0%	259%
Cereal Prices							
Red Sorghum 1kg	21,000	22,500	23,500	10,531	12%	4%	255%
White Maize 1kg	22,333	17,875	16,500	7,364	-26%	-8%	198%
Livestock & Livestock Product Prices							
Camel Local Quality (Head)	13,418,750	14,140,626	14,621,876	6,614,628	9%	3%	390%
Cattle Local Quality (Head)	7,000,000	7,600,000	-	-	-	-	-
Fresh Camel Milk 1 litre	47,229	35,250	37,688	16,950	-20%	7%	182%
Goat Export Quality (Head)	1,306,250	1,270,000	1,337,500	604,966	2%	5%	232%
Goat Local Quality (Head)	1,206,250	1,435,000	1,378,750	623,627	14%	-4%	265%
Other Essential Items							
Charcoal 50kg	373,750	405,625	398,750	180,289	7%	-2%	451%
Cowpeas 1 kg	32,333	57,250	51,333	23,122	59%	-10%	440%
Unskilled Labor Wage Rate	111,000	111,750	111,875	50,511	1%	0%	155%
Firewood Bundle	32,500	38,125	38,313	17,232	18%	0%	528%
Local Sesame Oil 1 litre	85,833	98,438	95,000	42,877	11%	-3%	204%
Exchange Rate (Somali Shilling per USD)	31,063	26,813	25,250	11,323	-19%	-6%	52%
Construction Materials*							
Cement 50kg	235,625	232,563	218,500	98,746	-7%	-6%	-
Cooking Pot Aluminium 7 Litre	434,375	455,313	439,375	198,667	1%	-4%	-
Galvanised Iron Sheet Ga 26	235,000	218,750	208,000	93,996	-11%	-5%	-
Hollow Concrete Block 10cm x 20cm x 40cm	12,375	12,500	12,500	5,555	1%	0%	-
Non Collapsible Jerrycan 10 Litre	40,938	36,875	37,813	17,006	-8%	3%	-
Plastic Tarpaulin 14m x 5 m	201,875	174,063	178,125	80,481	-12%	2%	-
Roofing Nails 15Kg	463,688	434,219	402,000	181,759	-13%	-7%	-
Timber 2in x 4in x 20ft	222,188	214,063	208,875	94,392	-6%	-2%	-
Woven Dry Raised Blanket 150cm x 200cm	266,250	271,563	253,750	114,693	-5%	-7%	-
Terms of Trade							
Labour Wage (Daily)/ Cereal (Rice(Kg))	5	5	5	-	5%	4%	-27%
Local Goat (Head)/ Cereal (Rice(Kg))	54	65	64	-	19%	-1%	5%
Price Indices							
Consumer Price Index	247	232	221	-	-10%	-5%	-
Purchasing Power Index	0.41	0.43	0.45	-	12%	5%	-

* Data has been collected since May 2010

Figure 38: Imported commodity prices compared to exchange rates

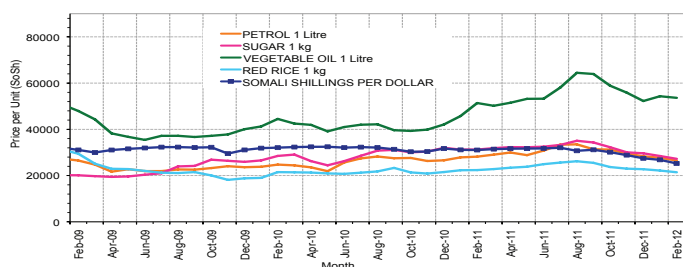


Figure 39: Trends in wage rates, staple cereal prices and relative purchasing power

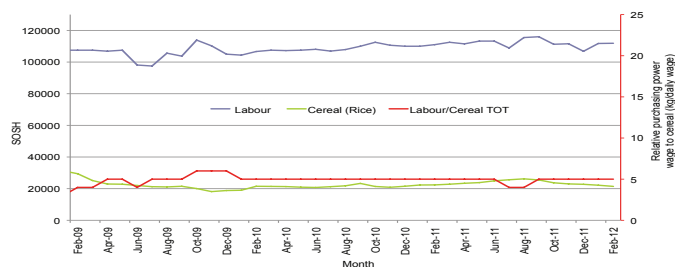


Figure 40: Goat Local Quality

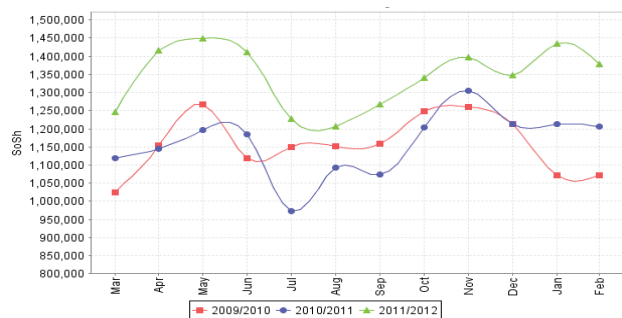


Figure 41: Exchange Rate

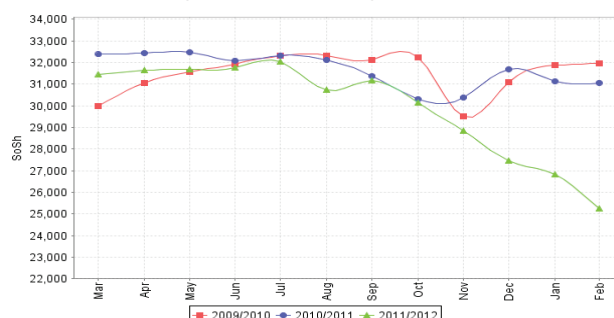


Figure 42: Water Drum

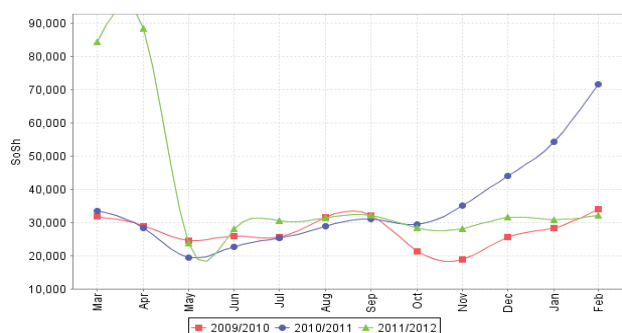
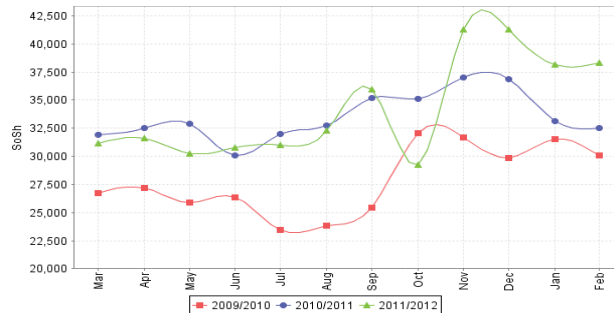


Figure 43: Firewood Bundle



Regional analysis: Northwest Regions

Indicator	Feb-11	Jan-12	Feb-12 Nominal Price	Feb-12 Real (Deflated) Price	% Change Same Month Previous	% Change Previous Month	% Change 5-year avg (2003-07)
Imported Commodities Prices							
Diesel 1 litre	5,150	6,394	6,150	5,188	19%	-4%	75%
Imported Red Rice 1kg	4,619	5,494	5,038	4,232	9%	-8%	74%
Petrol 1 litre	5,400	6,675	6,375	5,382	18%	-4%	48%
Sugar	5,950	6,363	5,950	5,016	0%	-6%	77%
Vegetable Oil 1 litre	9,500	11,040	10,700	9,101	13%	-3%	55%
Wheat Flour 1kg	3,750	4,319	4,175	3,490	11%	-3%	44%
Wheat Grain 1kg	2,333	3,067	3,067	2,537	31%	0%	45%
Cereal Prices							
White Sorghum 1kg	2,625	3,397	3,225	2,673	23%	-5%	74%
Yellow Maize 1kg	2,300	3,705	3,650	3,039	59%	-1%	102%
Livestock & Livestock Product Prices							
Camel Local Quality (Head)	1,600,000	1,925,000	1,937,500	1,665,910	21%	1%	30%
Cattle Local Quality (Head)	1,167,500	1,284,167	1,421,000	1,221,784	22%	11%	67%
Fresh Camel Milk 1 litre	5,250	5,088	5,438	4,576	4%	7%	18%
Goat Export Quality (Head)	284,688	302,413	332,706	285,986	17%	10%	99%
Goat Local Quality (Head)	216,563	222,813	238,594	205,061	10%	7%	61%
Other Essential Items							
Charcoal 50kg	31,281	40,125	38,000	32,575	21%	-5%	108%
Cowpeas 1 kg	8,500	9,000	10,400	8,843	22%	16%	130%
Unskilled Labor Wage Rate	28,250	34,500	37,750	32,360	34%	9%	34%
Firewood Bundle	2,300	2,467	2,750	2,265	20%	11%	-31%
Local Sesame Oil 1 litre	22,083	24,500	25,500	21,827	15%	4%	43%
Exchange Rate (Somaliland Shilling per USD)	5,475	5,862	6,018	5,075	10%	3%	-10%
Construction Materials*							
Cement 50kg	40,819	46,618	48,500	41,604	19%	4%	-
Cooking Pot Aluminium 7 Litre	99,875	87,340	82,538	70,872	-17%	-5%	-
Galvanised Iron Sheet Ga 26	50,300	-	-	-	-	-	-
Hollow Concrete Block 10cm x 20cm x 40cm	3,325	3,033	2,933	2,422	-12%	-3%	-
Non Collapsible Jerrycan 10 Litre	6,750	5,250	5,000	4,199	-26%	-5%	-
Plastic Tarpaulin 14m x 5 m	59,375	84,463	93,313	80,138	57%	10%	-
Roofing Nails 15Kg	150,688	184,125	183,750	157,902	22%	0%	-
Timber 2in x 4in x 20ft	121,950	103,263	110,433	94,859	-9%	7%	-
Woven Dry Raised Blanket 150cm x 200cm	64,500	61,063	65,269	56,023	1%	7%	-
Terms of Trade							
Labour Wage (Daily)/ Cereal (Rice(Kg))	6	6	7	-	23%	19%	-23%
Local Goat (Head)/ Cereal (Rice(Kg))	47	41	47	-	1%	17%	-8%
Price Indices							
Consumer Price Index	115	116	116	-	1%	0%	-
Purchasing Power Index	0.87	0.86	0.86	-	-1%	0%	-

* Data has been collected since May 2010

Figure 44: Imported commodity prices compared to exchange rates

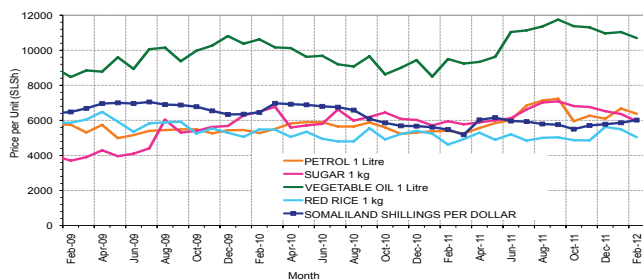


Figure 45: Trends in wage rates, staple cereal prices and relative purchasing power

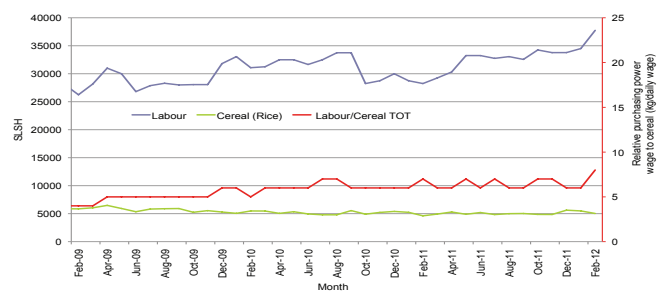


Figure 46: Goat Local Quality

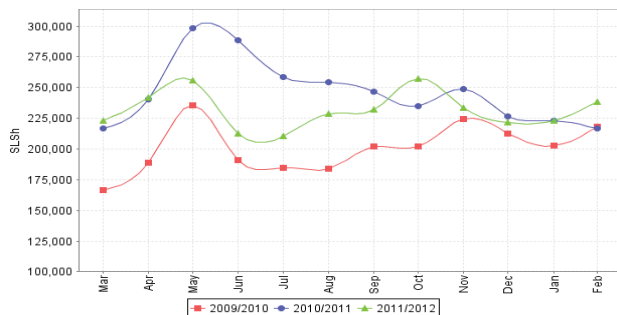


Figure 47: Exchange Rate

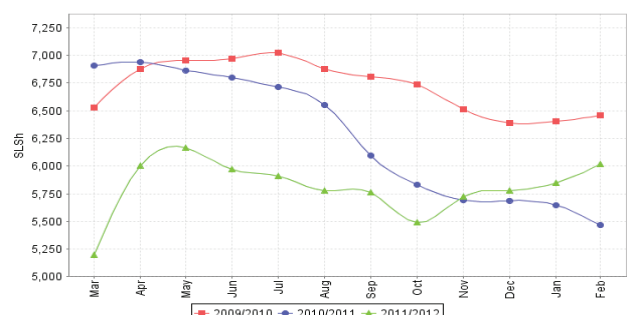


Figure 48: Water Drum

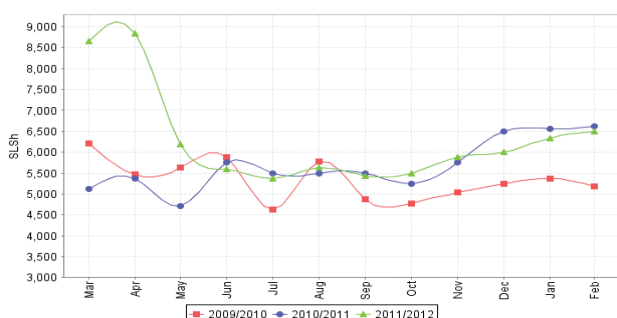
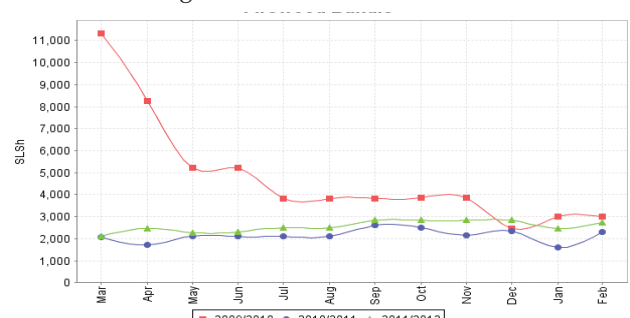


Figure 49: Firewood Bundle



Trends in Livestock Exports

Table 2: Berbera Livestock Exports (Number of Heads)

	1994	1995	1996	1997	1998	1999	2000	2001	2002	2003	2004	2005	2006	2007	2008	2009	2010	2011	2012 (Jan)
Shoats	1,572,656	2,683,597	2,376,646	2,814,495	957,224	2,048,136	1,601,083	51,546	341,711	563,107	859,404	1,023,795	1,017,242	1,350,054	1,219,519	1,556,003	2,584,810	3,104,684	111,646
Cattle	173,400	167,128	65,127	66,939	92,213	89,967	63,263	20,973	37,547	84,312	131,852	148,151	85,631	88,143	80,051	88,005	133,021	150,934	18,917
Camel	38,553	21,993	42,801	50,587	11,663	37,430	16,984	3,473	18,864	21,874	5,147	5,069	22,810	14,245	26,515	20,206	92,651	107,281	10,740

Figure 50: Berbera Livestock Exports (Number of Heads)

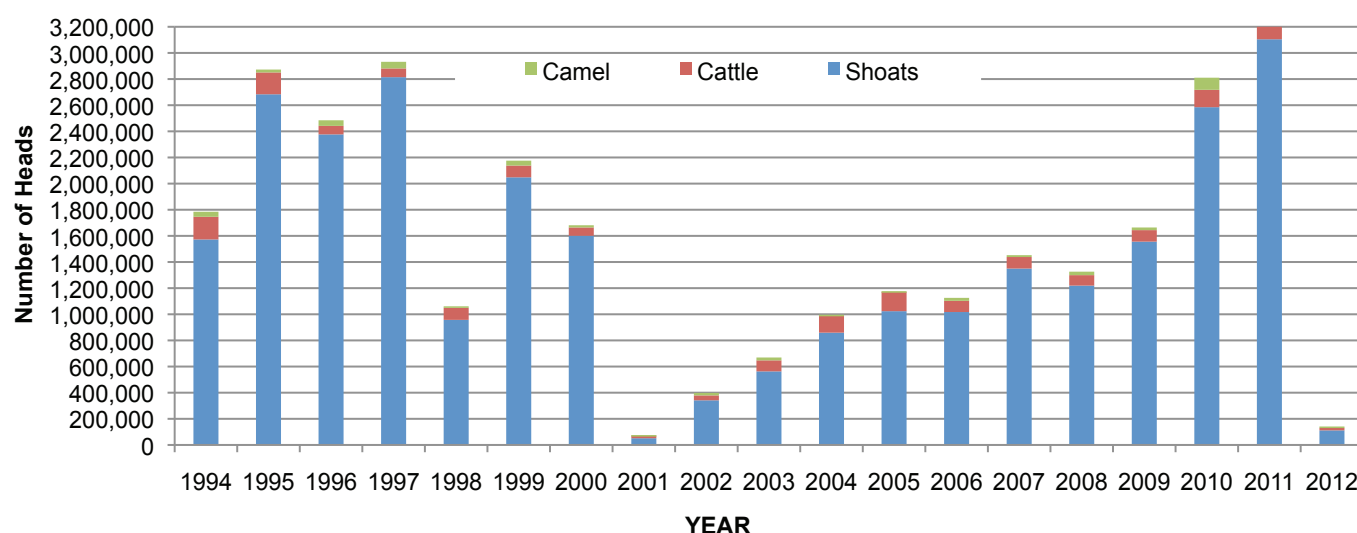


Table 3: Bossaso Livestock Exports (Number of Heads)

	1994	1995	1996	1997	1998	1999	2000	2001	2002	2003	2004	2005	2006	2007	2008	2009	2010	2011	2012 (Jan)
Shoats	344,000	524,346	614,407	494,320	517,020	633,669	571,455	548,853	1,412,450	1,483,409	1,166,480	1,594,859	1,777,283	1,522,855	1,236,775	1,159,454	1,333,478	1,256,535	93,224
Cattle	1,450	8,795	15,335	17,831	29,492	36,586	27,604	42,248	53,313	71,328	79,994	91,910	104,595	89,190	78,046	67,385	103,808	99,058	6,682
Camel	5,397	8,392	20,462	14,599	3,938	15,544	8,177	1,950	9,720	4,259	2,488	26,109	33,724	27,580	27,639	15,331	36,865	45,878	1,296

Figure 51: Bossaso Livestock Exports (Number of Heads)

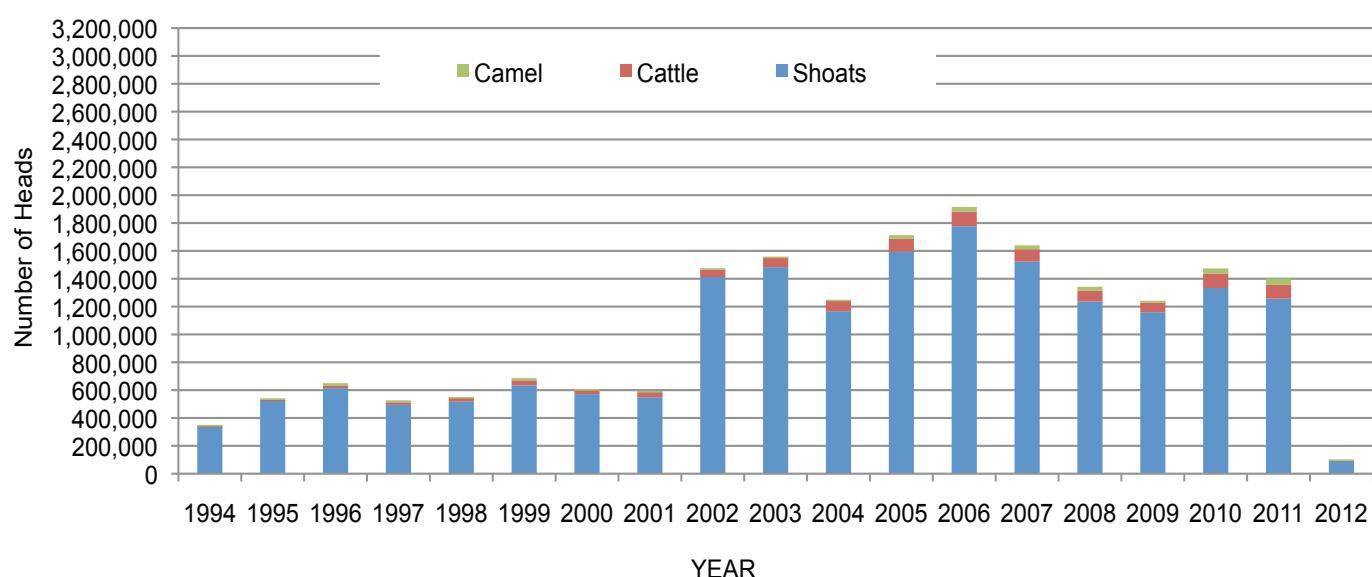


Table 4: Total Cereal Imports (Berbera,Bossaso,Elmaan)

	1997	1998	1999	2000	2001	2002	2003	2004	2005	2006	2007	2008	2009	2010	2011	2012 (Jan)
Rice	66,419	43,410	63,464	75,687	74,729	144,600	180,614	146,567	150,017	198,101	166,626	136,007	171,472	161,415	272,877	77,762
Wheat Flour	35,143	26,774	55,176	78,555	134,425	128,263	171,442	151,555	169,583	178,345	176,821	169,208	240,247	249,080	258,679	23,388
Pasta	2,510	2,455	8,544	11,071	26,702	35,425	29,273	38,749	39,153	52,815	41,331	38,441	86,372	102,373	184,849	19,168

Figure 52: Total Cereal Imports (Berbera,Bossaso and Elmaan)

