

# Market Data Update

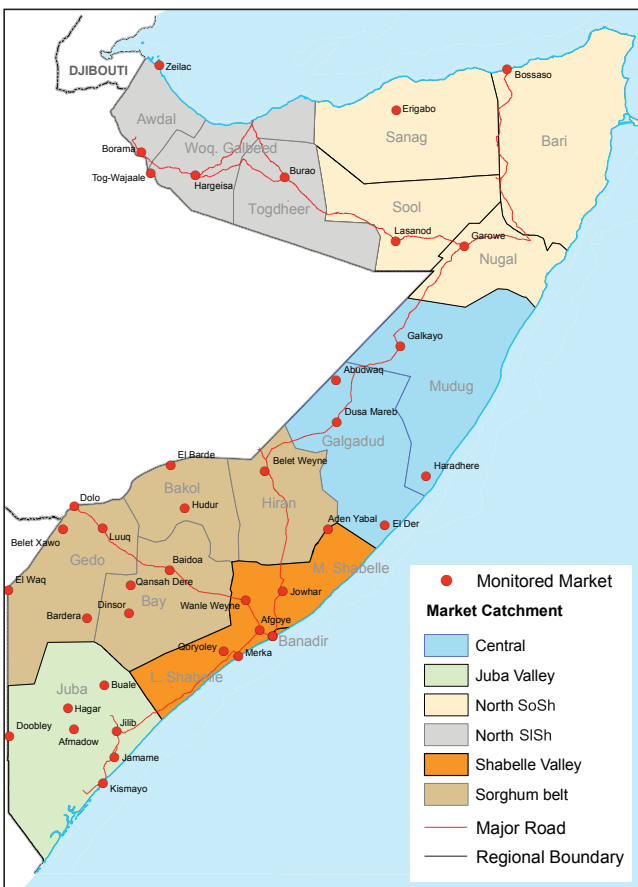


Food Security and Nutrition Analysis Unit - Somalia



Monthly Market Analysis, February 2011

## Highlights



The Somali Consumer Price Index (CPI), which measures changes in prices of a fixed minimum basket of goods and services, maintained its upward trend for the fifth month in succession in all regions in February 2011. Month on month inflation increased in all zones, mainly due to the rising prices of sorghum, sugar and milk (Northeast – 9%, Northwest – 6%, South – 5% and Central – 2%). In SoSh areas, the CPI is 151-173 percent above the reference period (March 2007) while it is only 14 percent higher in the SiSh areas.

The prices of locally produced cereals (maize and red sorghum) continued escalating in most areas as a result of the poor seasonal harvest in the South and increased demand. In February 2011, the red sorghum prices sustained an upward trend in the consuming regions of Northeast (17%) and Central (4%) as well as producing regions of Sorghum Belt (15%). In the same period, the average price of maize in Shabelle region surged by about 22 percent, while remaining stable in Juba due to the anticipated off-season maize production (March). Compared to a year ago, the local cereal prices are considerably higher both for maize (40-51%) and sorghum (80%) in the respective producing southern regions (Juba, Shabelle and Sorghum Belt). Sorghum prices have also risen in Central and Northeast, which receive the supplies of this cereal from the South. However, in Northeast the annual increase in sorghum price was relatively slower (26%) than in Central (54%) due to better access by various humanitarian agencies. The highest yearly increase in local cereal prices, however, was observed in Banadir region (sorghum - 165% and maize - 65%), reflecting the current crisis in surrounding rural livelihoods combined with volatile security situation in the region. Conversely, in Northwest the locally produced cereal price trends are favourable for consumers due to the bumper *Gu/Karan* 2010 cereal production in the zone, which brought yellow maize prices down by 28 percent, and kept white sorghum prices stable compared to last year (Feb. '10).

Prices of imported commodities such as petrol, rice and wheat flour remained constant in February in all regions apart from North SiSh areas, where they declined moderately from January 2011. Sugar and vegetable oil prices were also stable in most regions in February although slight to moderate monthly increases (4-12%) were seen in parts of the North and Central as well as in Banadir region in the South. When compared to the same month last year, the prices of most monitored import commodities, except rice, have increased moderately throughout Somalia, mainly due to soaring international commodity prices. The highest annual price increases for all imported commodities are observed in Banadir region.

With increasing cereal prices, a downward trend in the relative purchasing power that began in October 2010 continued into February 2011. The terms of trade (ToT) between daily labour wage and local cereals showed moderate decreases from January 2011 in all southern regions (9-21%). In other parts of Somalia that commonly rely on imported rice for consumption, the ToT was stable (North SoSh areas, Central) or improved moderately (North SiSh areas). Compared to a year ago, significant decline in the ToT is observed in southern regions of Shabelle (27%), Juba (47%) and Sorghum Belt (39%). The amount of cereals that can be exchanged for one day of labour ranges from as low as 3kg in Central to the highest terms of 7kg in the Sorghum Belt.

Exchange rate between USD to SoSh and SiSh remained relatively stable in February 2011 in most parts of Somalia. However, compared to the same month last year, the Somaliland Shilling appreciated by a significant 15 percent, while SoSh remained stable. The appreciation of the SiSh to the dollar is attributed mainly to increased foreign exchange earnings from livestock exports during the *Hajj* period as well as from the remittances from diaspora combined with general macro-economic stability in the region.

## Regional Highlights

**Juba Valley:** prices of most monitored commodities remained generally stable in the past one month except for fresh camel milk, which rose by 11 percent and livestock, which declined by 5-8 percent. Casual labour wage rate decreased by 9 percent, consequently reducing the ToT between labour and cereals by 10 and 47 percent from January 2011 and February last year, respectively.

**Sorghum Belt:** prices of most monitored commodities remained generally stable over the last month. The exceptions are maize and sorghum, for which prices are 17 and 15 percent higher compared to their respective levels in January 2011, as well as for cattle, which declined significantly (32%). Due to increases in cereal prices, the ToT labour to cereal is considerably (39%) lower compared to its February 2010 levels.

**Shabelle Valley:** maize prices rose rapidly (22%) in February compared to the previous month, and exceeded their levels a year ago by 51 percent. Slow growth in labour rates coupled with increasing cereal prices over the month of February 2011 lowered the ToT by 13 percent. The purchasing power has significantly weakened when compared to a year ago, with the ToT labour to cereal exhibiting a decrease of 27 percent.

**Central:** labour wage rates remained generally stable in the zone, while increases in the prices of sorghum (5%) and a local goat (3%) over the past one month were marginal, with no effect on the terms of trade. Hence, as in January 2011, 57 kilograms of cereals can be fetched by the sale of one local goat.

**Northeast:** with the exception of cereal prices, which appreciated by 12-17 percent over the last month, livestock prices and purchasing power remained generally stable in February 2011 compared to the previous month.

**Northwest:** cereal prices are slightly lower, while livestock prices and purchasing power improved moderately since January 2011

**Banadir:** prices of locally produced cereals (maize and sorghum) have increased (7% and 20%, respectively) when compared to the previous month and are significantly (65% and 163%, respectively) than a year ago. As labour rates remained unchanged in the last month, the ToT between labour rates and cereals exhibited a monthly decline of about 21 percent.

This Market Data Update is a monthly report that presents a compilation of tabulated graphical market information produced regularly as part of the monthly monitoring process.

The weekly price data is collected from 44 main markets throughout Somalia since 1995.

The 5-year period of 2003-07 was characterised by fairly stable prices and relatively low inflation. In this bulletin these years are used as a reference period for seasonal trends comparison.

Market analysis is an integral part of all of FSNAU's Annual Food Security Projections and seasonal technical reports (Technical Reports on FSNAU Post *Gu* and *Deyr* Analysis).

This data is available online on [www.fsnau.org/ids](http://www.fsnau.org/ids).

Technical and Managerial Support



Funding Agencies



# International Market Highlights

**Diesel:** in February 2011, Abu Dhabi/ Dubai crude oil prices<sup>1</sup> breached the \$103 per barrel, 8 percent up from January 2011 levels and 36 percent higher compared to the same month last year, the first time ever since September 2008<sup>2</sup>, mainly due to unprecedented uncertainty, fear and panic in oil markets following heightening political unrest and rising tensions across the Middle East and North Africa. High crude oil price spikes are projected in the short-run as the world's biggest oil-producing region of Middle East are experiencing political upheaval. International price transmission in oil prices is clearly manifested in Somalia as diesel prices in February 2011 rose in the country's main port cities of Mogadishu and Bossaso by 7 and 13 percent, respectively, compared with the previous month. The corresponding price increases in these two locations are equivalent to 20 and 40 percent when compared to February last year.

**Rice:** international export prices of rice<sup>3</sup> remained generally stable in February 2011, increasing marginally (5%) when compared both to same month last year and January 2011. On the other hand, current imported rice prices in Mogadishu are 13 and 11 percent lower than in the previous month and February last year, respectively, while remaining relatively stable in Bossaso over the same periods. The average price differential between international and local markets is approximately USD 0.23/kg and is 15 and 5 percent lower than the previous month and a year ago, respectively. According to GIEWS, the prospect of the rice market is projected to be stable in 2011.

**Sugar:** FAO sugar price index exhibited relative stability in the month of February 2011 compared to the previous month but is 16 percent higher than a year ago. However, the trend over the last 12 months reflected a sustained rise in global prices of sugar, partly fuelled by recent floods in the two main producers - Brazil and Australia. Though the international prices of sugar have remained high for close to three years, latest data<sup>4</sup> indicate that the cost of the commodity is hovering around a 30-year-high<sup>5</sup> of about 33 cents/lb<sup>6</sup> (73 US Cents/kg) in the week ending February 2011. Global prices are projected to remain high in the immediate future. The international sugar price trend is mirrored in the local markets in Somalia with the slight monthly increases observed in Mogadishu (1%) and Bossaso (7%). The sugar price in these two locations is also 7 and 13 percent than the same month last year, respectively.

1 Weekly Abu Dhabi Murban Spot Price FOB (Dollars per Barrel), US Energy Information Administration, [http://www.eia.doe.gov/dnav/pet/pet\\_pri\\_wco\\_k\\_w.htm](http://www.eia.doe.gov/dnav/pet/pet_pri_wco_k_w.htm)

2 And the second time in history

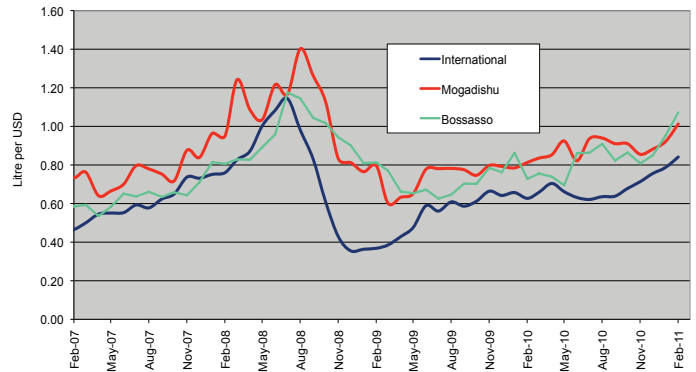
3 Bangkok, Rice (Thai A1 Super 1/B), Export, US Dollar, Tonne, FAO GIEWS 2011

4 ISO, International Sugar Organization, <http://www.indiansugar.com/briefings/wsm.htm>

5 FAO, GIEWS

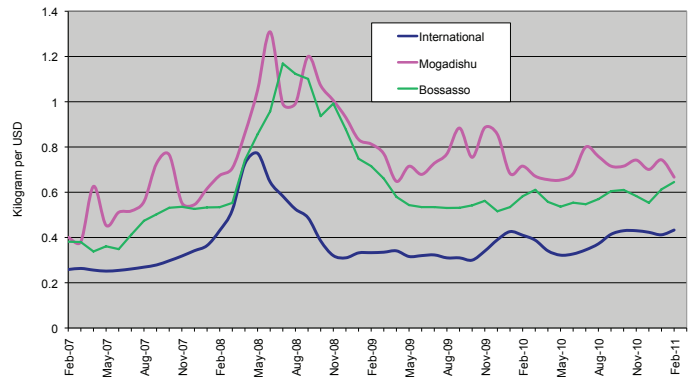
6 [http://www.hellenicshippingnews.com/index.php?option=com\\_content&view=article&id=7755:surge-in-global-prices-sweetens-prospects-for-kenya-sugar-industry&catid=16:commodity-news&Itemid=78](http://www.hellenicshippingnews.com/index.php?option=com_content&view=article&id=7755:surge-in-global-prices-sweetens-prospects-for-kenya-sugar-industry&catid=16:commodity-news&Itemid=78)

Figure 1: Comparison of Diesel Prices: International (Asia Dubai), Mogadishu and Bossasso



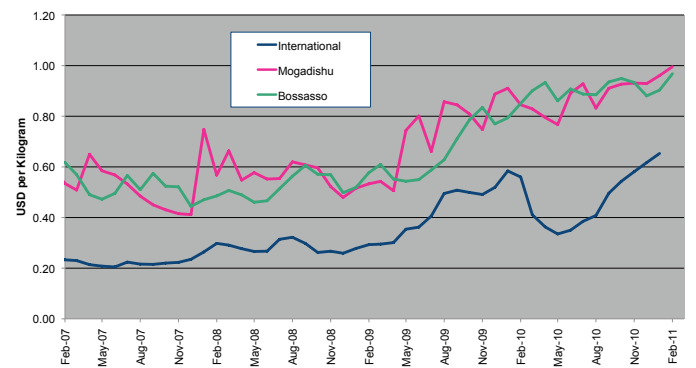
Source: FAO Statistics and FSNAU Market Price Monitoring System, 2010.

Figure 2: Comparison of Rice Prices: International (Bangkok FOB), Mogadishu and Bossasso



Source: FAO Statistics and FSNAU Market Price Monitoring System, 2011.

Figure 3: Comparison of Sugar Prices: International (ISO), Mogadishu and Bossasso



Source: International Sugar Organization and FSNAU Market Price Monitoring System - 2011

# National Trends in Market Prices

Figure 4: Relative Purchasing Power for Selected Regions  
(Terms of Trade between wage rates and selected cereals)

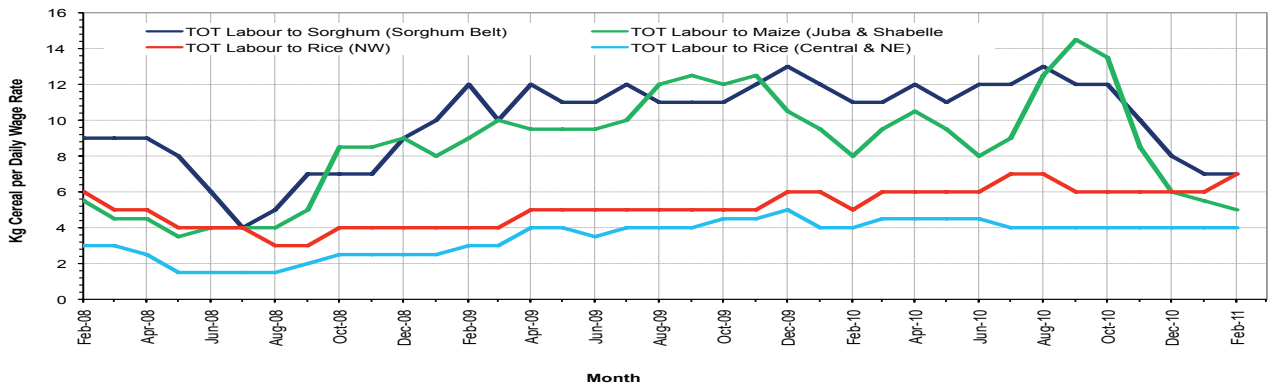


Figure 5: Monthly Exchange Rate for Selected Regions (SoSh and SISH to USD)

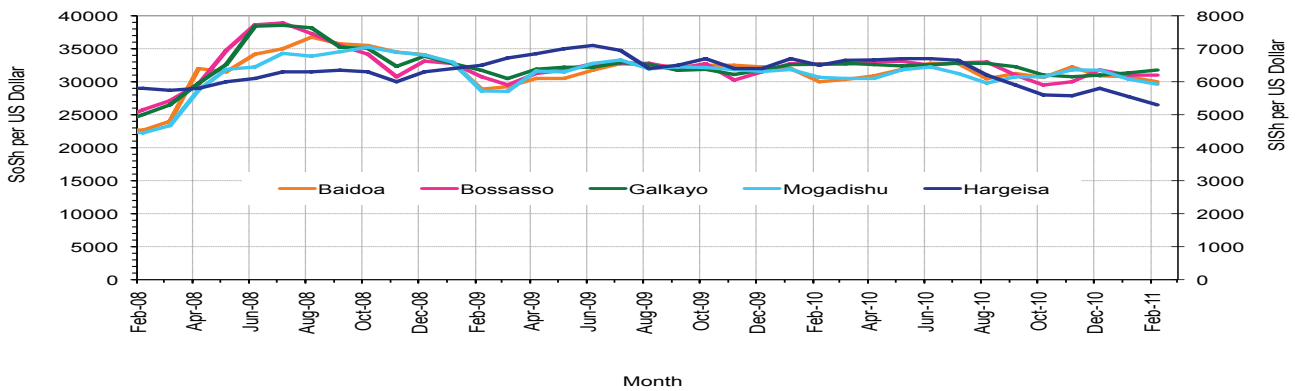


Figure 6: Monthly Trends in Consumer Price Index (CPI)

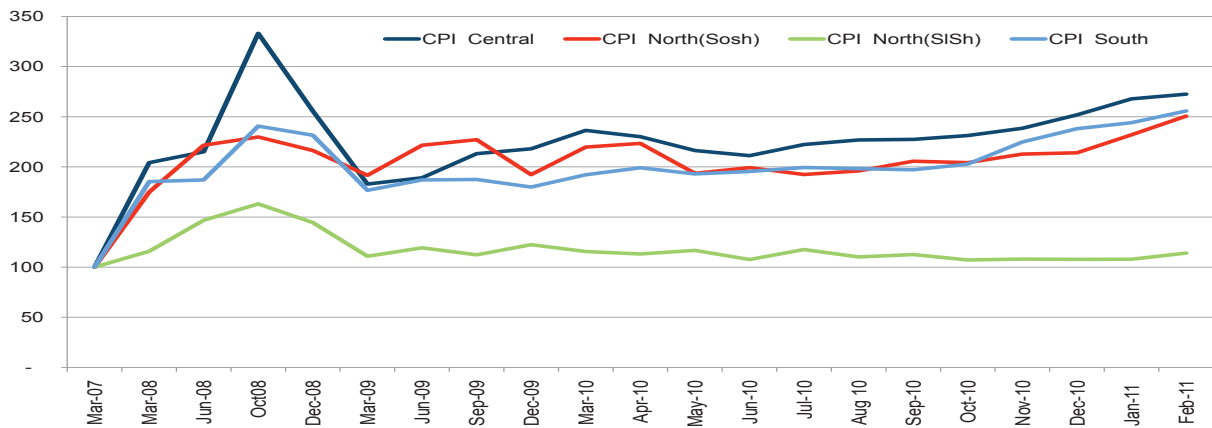
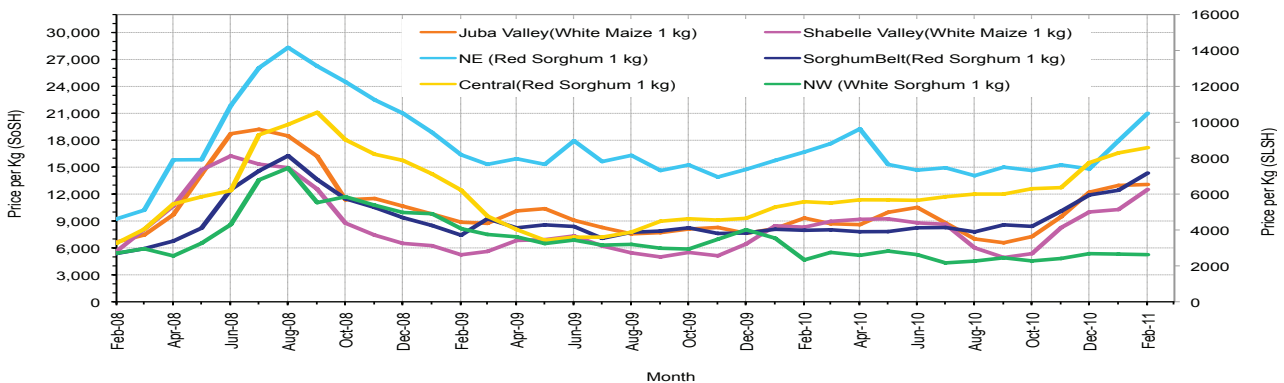


Figure 7: Monthly Trends in Cereal Prices



# Regional analysis: Juba Regions

Indicator	5-Year Average	Feb-10	Jan-11	Current Nominal Price	Current Real (Deflated) Price	% Change Same Month Previous Year	% Change Previous Month	% Change 5-year avrg (2003-07)
<b>Imported Commodities Prices</b>								
Diesel 1 litre	11,068	29,500	31,429	32,393	12,566	10%	3%	193%
Imported Red Rice 1kg	7,061	22,714	22,357	21,429	8,279	-6%	-4%	203%
Petrol 1 litre	13,030	31,321	34,000	34,179	13,265	9%	1%	162%
Sugar	7,707	27,000	30,329	29,464	11,421	9%	-3%	282%
Vegetable Oil 1 litre	16,683	45,679	53,614	52,714	20,512	15%	-2%	216%
Wheat Flour 1kg	7,087	17,714	19,357	18,857	7,273	6%	-3%	166%
Wheat Grain 1kg	2,000	12,000	16,000	16,000	6,156	33%	0%	700%
<b>Cereal Prices</b>								
Red Sorghum 1kg	1,990	7,375	13,000	-	-	-	-	-
White Maize 1kg	2,281	9,329	12,964	13,071	5,011	40%	1%	473%
<b>Livestock &amp; Livestock Product Prices</b>								
Camel Local Quality (Head)	3,078,041	8,151,250	7,255,834	6,879,167	2,689,763	-16%	-5%	123%
Cattle Local Quality (Head)	1,285,291	3,721,667	1,793,000	1,650,000	645,076	-56%	-8%	28%
Fresh Camel Milk 1 litre	6,153	20,143	22,243	24,750	9,578	23%	11%	302%
Goat Export Quality (Head)	374,727	1,034,321	829,750	819,792	320,452	-21%	-1%	119%
Goat Local Quality (Head)	261,994	634,607	476,143	489,107	191,149	-23%	3%	87%
<b>Other Essential Items</b>								
Charcoal 50kg	31,262	88,857	72,000	68,036	26,503	-23%	-6%	118%
Cowpeas 1 kg	5,458	20,008	24,807	25,550	9,890	28%	3%	368%
Unskilled Labor Wage Rate	29,250	94,929	77,357	70,357	27,411	-26%	-9%	141%
Firewood Bundle	2,258	6,143	6,143	6,143	6,143	-3%	0%	172%
Local Sesame Oil 1 litre	19,225	76,571	77,057	75,786	29,534	-1%	-2%	294%
Exchange Rate (Somali Shilling per USD)	15,239	30,439	30,834	30,208	11,712	-1%	-2%	98%
<b>Construction Materials*</b>								
Cement 50kg	-	-	343,571	391,429	152,955	-	14%	-
Cooking Pot Aluminium 7 Litre	-	-	329,875	297,000	116,032	-	-10%	-
Galvanised Iron Sheet Ga 26	-	-	161,143	160,714	62,742	-	0%	-
Hollow Concrete Block 10cm x 20cm x 40cm	-	-	19,250	20,000	7,720	-	4%	-
Non Collapsible Jerrycan 10 Litre	-	-	30,000	30,000	11,630	-	0%	-
Plastic Tarpaulin 14m x 5 m	-	-	600,000	600,000	234,509	-	0%	-
Roofing Nails 15Kg	-	-	789,371	804,286	314,389	-	2%	-
Timber 2in x 4in x 20ft	-	-	322,667	334,000	130,499	-	4%	-
Woven Dry Raised Blanket 150cm x 200cm	-	-	-	-	-	-	-	-
<b>Terms of Trade</b>								
Labour Wage (Daily)/ Cereal (Maize(Kg))	13	10	6	5	5	-47%	-10%	-58%
Local Goat (Head)/ Cereal (Maize(Kg))	115	68	37	37	38	-45%	2%	-67%
<b>Price Indices</b>								
Consumer Price Index	-	194	244	256	-	32%	5%	-
Purchasing Power Index	-	0.52	0.41	0.39	-	-24%	-5%	-

\* Data has been collected for the past 9 months only

Figure 8: Imported commodity prices compared to exchange rates

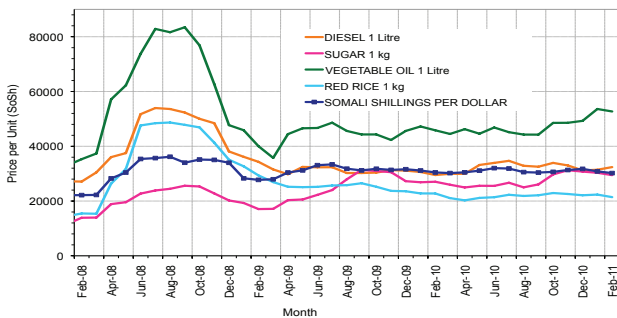
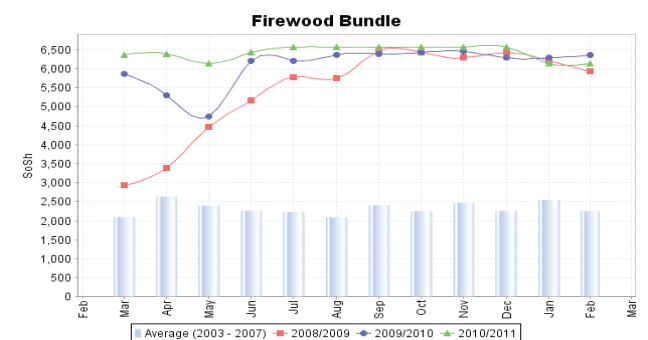
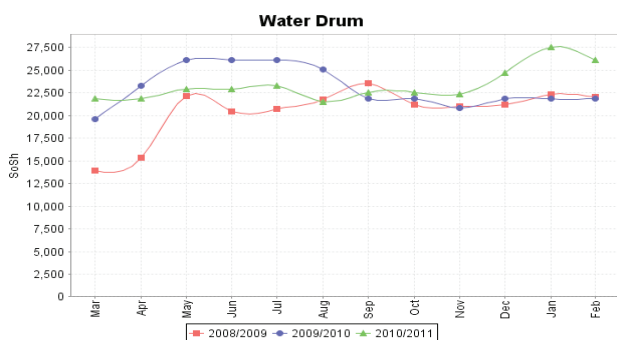
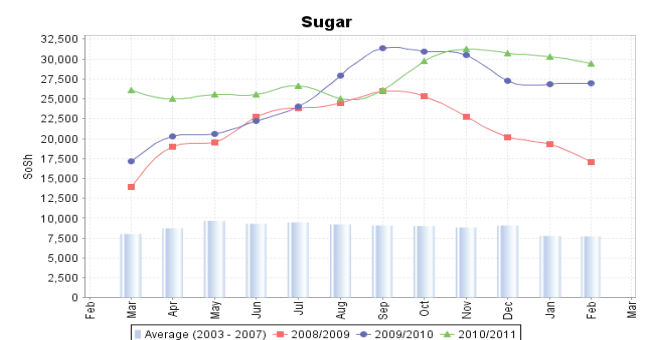
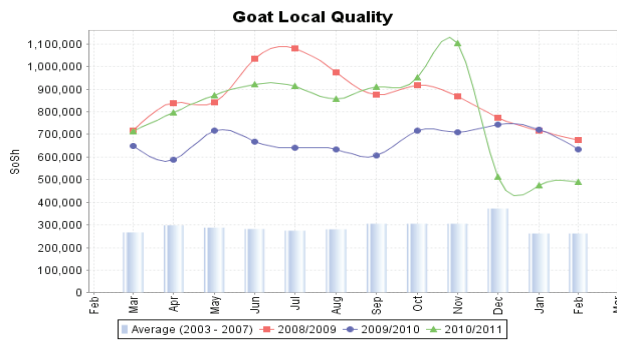
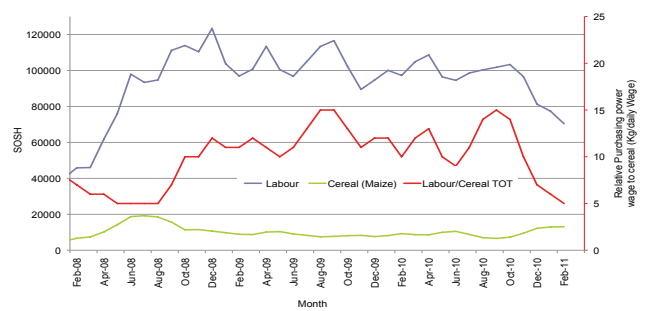


Figure 9: Trends in wage rates, staple cereal prices and relative purchasing power



# Regional analysis: Sorghum Belt Regions

Indicator	5-Year Average	Feb-10	Jan-11	Current Nominal Price	Current Real (Deflated) Price	% Change Same Month Previous Year	% Change Previous Month	% Change 5-year avg (2003-07)
<b>Imported Commodities Prices</b>								
Diesel 1 litre	11,136	29,227	32,409	33,273	12,910	14%	3%	199%
Imported Red Rice 1kg	7,753	24,364	24,318	23,955	9,267	-2%	-1%	209%
Petrol 1 litre	13,206	30,841	31,864	30,975	12,012	0%	-3%	135%
Sugar	8,803	28,795	31,455	31,841	12,350	11%	1%	262%
Vegetable Oil 1 litre	17,556	44,364	51,091	51,409	20,002	16%	1%	193%
Wheat Flour 1kg	7,719	20,295	21,500	20,909	8,076	3%	-3%	171%
Wheat Grain 1kg	3,621	13,500	16,563	16,125	6,205	19%	-3%	345%
<b>Cereal Prices</b>								
Red Sorghum 1kg	1,763	7,964	12,428	14,339	5,507	80%	15%	713%
White Maize 1kg	2,103	10,739	11,841	13,898	5,334	29%	17%	561%
<b>Livestock &amp; Livestock Product Prices</b>								
Camel Local Quality (Head)	3,013,042	8,632,500	6,688,637	6,427,273	2,513,065	-26%	-4%	113%
Cattle Local Quality (Head)	1,203,021	2,743,750	1,601,945	1,090,000	426,107	-60%	-32%	-9%
Fresh Camel Milk 1 litre	6,331	18,068	25,977	26,636	10,315	47%	3%	321%
Goat Export Quality (Head)	365,416	1,175,682	1,090,909	1,013,409	396,159	-14%	-7%	177%
Goat Local Quality (Head)	238,227	683,864	559,545	519,091	202,873	-24%	-7%	118%
<b>Other Essential Items</b>								
Charcoal 50kg	34,057	117,932	121,659	110,795	43,223	-6%	-9%	225%
Cowpeas 1 kg	4,639	24,722	26,225	30,281	11,740	22%	15%	553%
Unskilled Labor Wage Rate	18,820	86,386	91,318	95,568	37,269	11%	5%	408%
Firewood Bundle	1,672	5,273	5,182	5,182	1,926	-2%	0%	210%
Local Sesame Oil 1 litre	21,959	81,094	78,286	77,679	30,274	-4%	-1%	254%
Exchange Rate (Somali Shilling per USD)	16,721	31,111	30,391	30,320	11,756	-3%	0%	81%
<b>Construction Materials*</b>								
Cement 50kg	-	-	339,700	339,250	132,552	-	0%	-
Cooking Pot Aluminium 7 Litre	-	-	320,625	334,250	130,597	-	4%	-
Galvanised Iron Sheet Ga 26	-	-	198,273	202,045	78,903	-	2%	-
Hollow Concrete Block 10cm x 20cm x 40cm	-	-	10,000	11,000	4,201	-	10%	-
Non Collapsible Jerrycan 10 Litre	-	-	51,705	52,500	20,428	-	2%	-
Plastic Tarpaulin 14m x 5 m	-	-	315,850	311,600	121,741	-	-1%	-
Roofing Nails 15Kg	-	-	869,378	830,972	324,823	-	-4%	-
Timber 2in x 4in x 20ft	-	-	269,107	265,714	103,798	-	-1%	-
Woven Dry Raised Blanket 150cm x 200cm	-	-	110,833	114,167	44,541	-	3%	-
<b>Terms of Trade</b>								
Labour Wage (Daily)/ Cereal (Sorghum(Kg))	11	11	7	7	7	-39%	-9%	-38%
Local Goat (Head)/ Cereal (Sorghum(Kg))	135	86	45	36	37	-58%	-20%	-73%
<b>Price Indices</b>								
Consumer Price Index	-	194	244	256	-	32%	5%	-
Purchasing Power Index	-	0.52	0.41	0.39	-	-24%	-5%	-

\* Data has been collected for the past 9 months only

Figure 10: Imported commodity prices compared to exchange rates

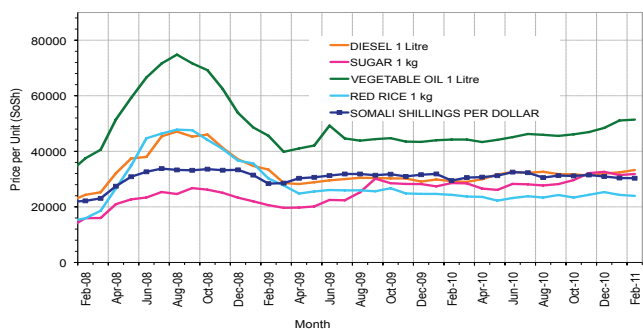
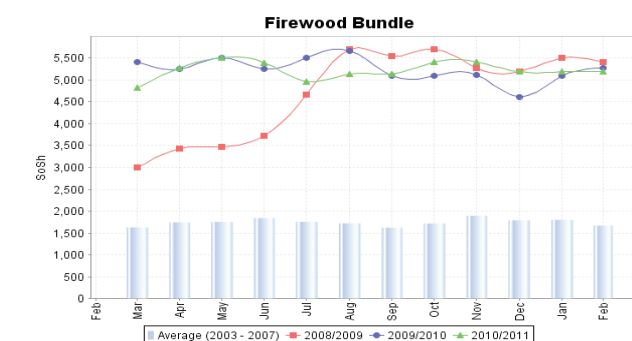
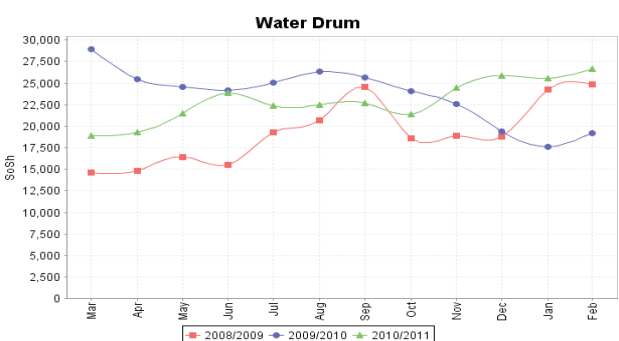
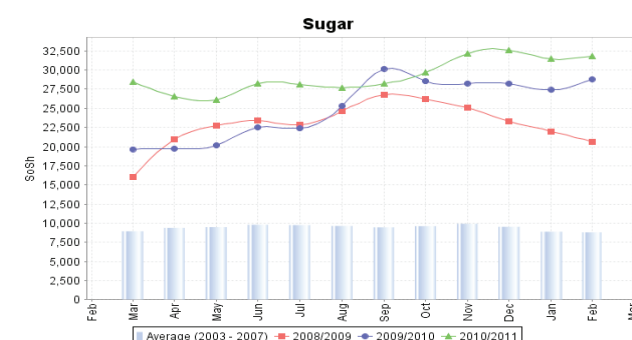
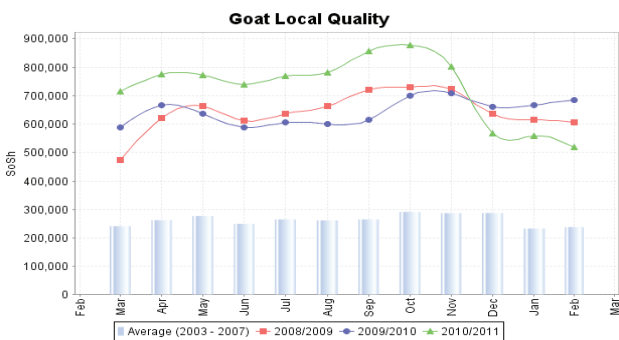
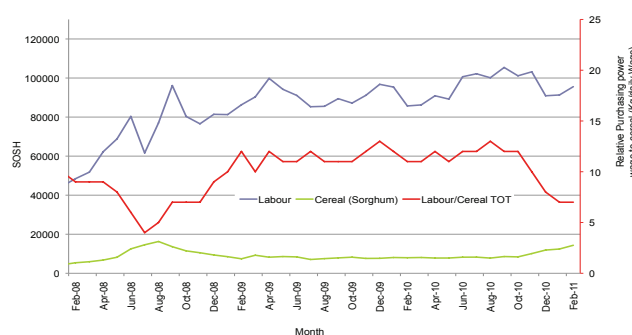


Figure 11: Trends in wage rates, staple cereal prices and relative purchasing power



# Regional analysis: Shabelle Regions

Indicator	5-Year Average	Feb-10	Jan-11	Current Nominal Price	Current Real (Deflated) Price	% Change Same Month Previous Year	% Change Previous Month	% Change 5-year avrg (2003-07)
<b>Imported Commodities Prices</b>								
Diesel 1 litre	8,353	27,917	31,042	31,250	12,119	12%	1%	274%
Imported Red Rice 1kg	6,167	21,208	19,917	20,750	8,014	-2%	4%	235%
Petrol 1 litre	10,512	29,125	31,708	31,667	12,282	9%	0%	201%
Sugar	7,249	27,208	30,375	30,125	11,679	11%	-1%	316%
Vegetable Oil 1 litre	13,195	37,042	46,000	44,783	17,411	21%	-3%	239%
Wheat Flour 1kg	6,016	15,583	19,000	18,833	7,264	21%	-1%	213%
Wheat Grain 1kg	4,332	-	-	-	-	-	-	-
<b>Cereal Prices</b>								
Red Sorghum 1kg	2,090	8,201	12,000	13,707	5,260	67%	14%	556%
White Maize 1kg	2,396	8,312	10,278	12,511	4,792	51%	22%	422%
<b>Livestock &amp; Livestock Product Prices</b>								
Camel Local Quality (Head)	3,824,017	10,617,500	11,175,000	11,300,000	4,418,378	6%	1%	196%
Cattle Local Quality (Head)	1,153,858	3,830,000	2,645,000	2,715,000	1,061,508	-29%	3%	135%
Fresh Camel Milk 1 litre	4,637	13,917	19,667	20,458	7,899	47%	4%	341%
Goat Export Quality (Head)	489,737	1,295,625	1,221,042	1,220,000	476,939	-6%	0%	149%
Goat Local Quality (Head)	324,507	1,008,542	862,500	959,167	374,949	-5%	11%	196%
<b>Other Essential Items</b>								
Charcoal 50kg	40,379	105,680	109,083	109,278	42,629	3%	0%	171%
Cowpeas 1 kg	4,438	18,166	24,011	26,542	10,278	46%	11%	498%
Unskilled Labor Wage Rate	18,789	51,875	54,000	57,250	22,286	10%	6%	205%
Firewood Bundle	2,016	3,833	3,833	4,167	4,167	9%	9%	107%
Local Sesame Oil 1 litre	18,070	62,333	61,042	58,417	22,742	-6%	-4%	223%
Exchange Rate (Somali Shilling per USD)	16,075	30,787	30,854	29,846	11,570	-3%	-3%	86%
<b>Construction Materials*</b>								
Cement 50kg	-	-	272,750	260,750	101,857	-	-4%	-
Cooking Pot Aluminium 7 Litre	-	-	720,000	690,000	269,701	-	-4%	-
Galvanised Iron Sheet Ga 26	-	-	118,950	118,800	46,353	-	0%	-
Hollow Concrete Block 10cm x 20cm x 40cm	-	-	13,750	13,750	5,276	-	0%	-
Non Collapsible Jerrycan 10 Litre	-	-	50,000	53,000	20,624	-	6%	-
Plastic Tarpaulin 14m x 5 m	-	-	279,000	275,000	107,429	-	-1%	-
Roofing Nails 15kg	-	-	644,375	642,500	251,128	-	0%	-
Timber 2in x 4in x 20ft	-	-	58,250	58,550	22,794	-	1%	-
Woven Dry Raised Blanket 150cm x 200cm	-	-	80,000	75,000	29,226	-	-6%	-
<b>Terms of Trade</b>								
Labour Wage (Daily)/ Cereal (Maize(Kg))	8	6	5	5	5	-27%	-13%	-42%
Local Goat (Head)/ Cereal (Maize(Kg))	135	121	84	77	78	-37%	-9%	-43%
<b>Price Indices</b>								
Consumer Price Index	-	194	244	256	-	32%	5%	-
Purchasing Power Index	-	0.52	0.41	0.39	-	-24%	-5%	-

\* Data has been collected for the past 9 months only

Figure 12: Imported commodity prices compared to exchange rates

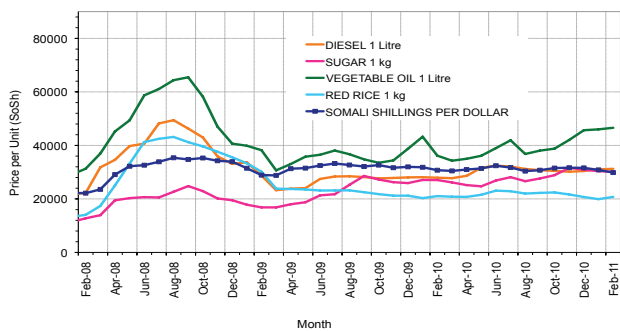
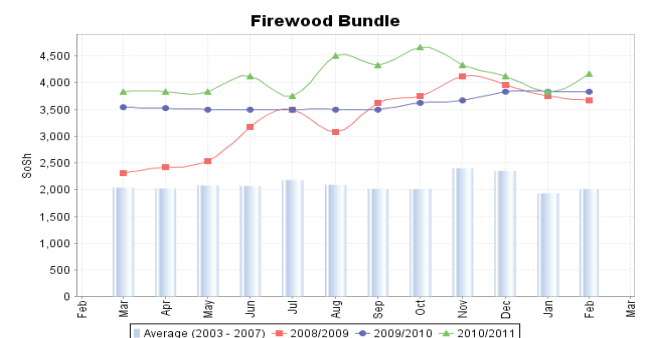
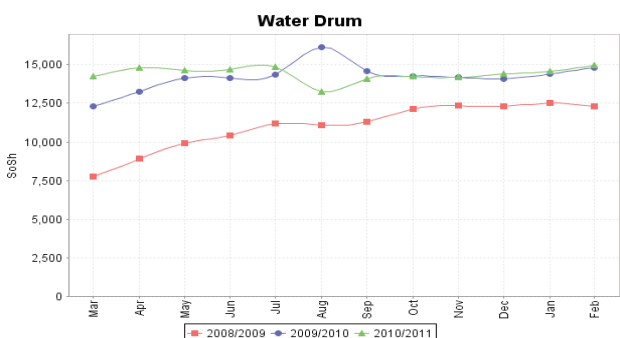
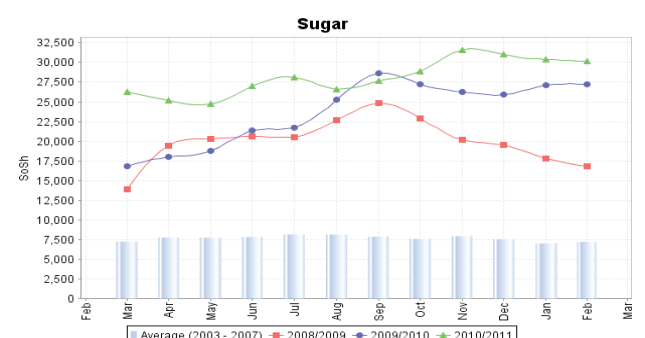
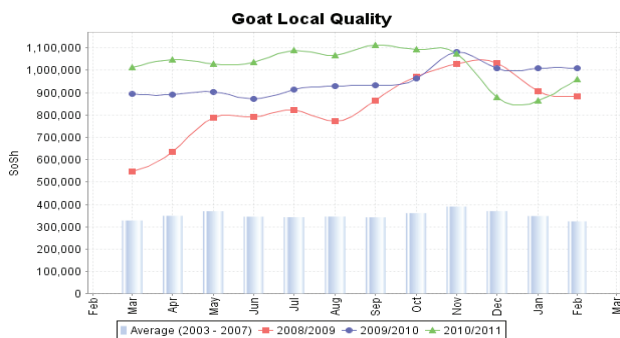
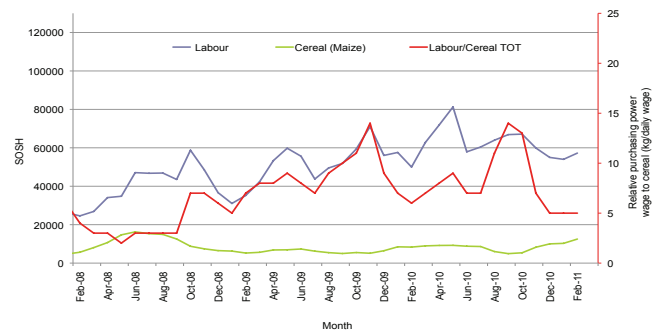


Figure 13: Trends in wage rates, staple cereal prices and relative purchasing power



# Regional analysis:Banadir Region

Indicator	5-Year Average	Feb-10	Jan-11	Current Nominal Price	Current Real (Deflated) Price	% Change Same Month Previous Year	% Change Previous Month	% Change 5-year avrg (2003-07)
<b>Imported Commodities Prices</b>								
Diesel 1 litre	7,950	25,000	28,167	29,000	11,239	16%	3%	265%
Imported Red Rice 1kg	5,875	22,000	21,310	22,458	8,681	2%	5%	282%
Petrol 1 litre	9,665	25,000	28,917	29,042	11,256	16%	0%	200%
Sugar	6,525	26,000	29,200	29,333	11,370	13%	0%	350%
Vegetable Oil 1 litre	13,066	35,500	44,342	48,250	18,767	36%	9%	269%
Wheat Flour 1kg	5,541	13,500	17,438	18,083	6,971	34%	4%	226%
Wheat Grain 1kg	4,000	11,000	16,000	17,000	6,547	55%	6%	325%
<b>Cereal Prices</b>								
Red Sorghum 1kg	1,921	5,000	12,332	13,167	5,049	163%	7%	585%
White Maize 1kg	2,672	8,000	11,055	13,211	5,066	65%	20%	394%
<b>Livestock &amp; Livestock Product Prices</b>								
Camel Local Quality (Head)	6,091,667	13,875,000	16,400,000	16,000,000	6,256,153	15%	-2%	163%
Cattle Local Quality (Head)	2,828,333	3,000,000	3,080,000	3,925,000	1,534,637	31%	27%	39%
Fresh Camel Milk 1 litre	4,450	14,000	18,708	24,292	9,399	74%	30%	446%
Goat Export Quality (Head)	-	1,375,000	1,560,000	1,650,000	645,076	20%	6%	-
Goat Local Quality (Head)	545,000	950,000	1,075,000	1,673,750	654,363	76%	56%	207%
<b>Other Essential Items</b>								
Charcoal 50kg	100,000	125,000	147,500	140,083	54,675	12%	-5%	40%
Cowpeas 1 kg	4,203	15,750	27,609	29,050	11,259	84%	5%	591%
Unskilled Labor Wage Rate	55,250	40,000	76,042	72,083	28,086	80%	-5%	30%
Firewood Bundle	38,950	3,000	5,250	6,917	-	131%	32%	-82%
Local Sesame Oil 1 litre	18,100	62,500	64,283	65,500	25,512	5%	2%	262%
Exchange Rate (Somali Shilling per USD)	16,329	30,750	30,250	29,921	11,600	-3%	-1%	83%
<b>Construction Materials*</b>								
Cement 50kg	-	-	232,858	213,750	-	-	-8%	-
Cooking Pot Aluminium 7 Litre	-	-	190,000	180,000	-	-	-5%	-
Galvanised Iron Sheet Ga 26	-	-	110,083	114,250	-	-	4%	-
Hollow Concrete Block 10cm x 20cm x 40cm	-	-	9,600	9,375	-	-	-2%	-
Non Collapsible Jerrycan 10 Litre	-	-	30,667	47,500	-	-	55%	-
Plastic Tarpaulin 14m x 5 m	-	-	285,833	255,000	-	-	-11%	-
Roofing Nails 15kg	-	-	516,333	456,000	-	-	-12%	-
Timber 2in x 4in x 20ft	-	-	220,250	159,333	-	-	-28%	-
Woven Dry Raised Blanket 150cm x 200cm	-	-	134,583	98,833	-	-	-27%	-
<b>Terms of Trade</b>								
Labour Wage (Daily)/ Cereal (Maize(Kg))	21	5	7	5	6	9%	-21%	-74%
Local Goat (Head)/ Cereal (Maize(Kg))	204	119	97	127	129	7%	30%	-38%
<b>Price Indices</b>								
Consumer Price Index	-	194	244	256	-	32%	5%	-
Purchasing Power Index	-	0.52	0.41	0.39	-	-24%	-5%	-

\* Data has been collected for the past 9 months only

Figure 14: Bakara: Imported Commodity Prices compared to Exchange Rate

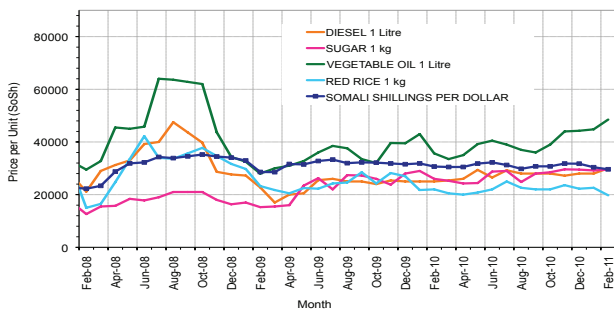
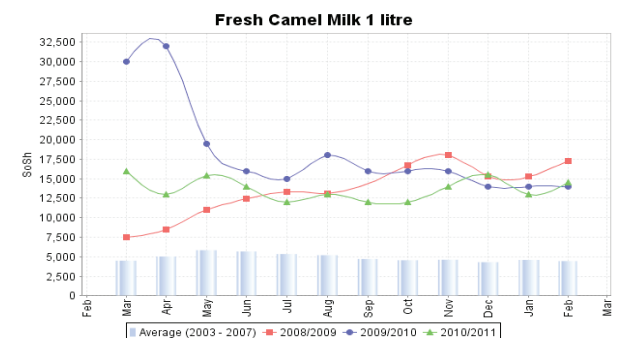
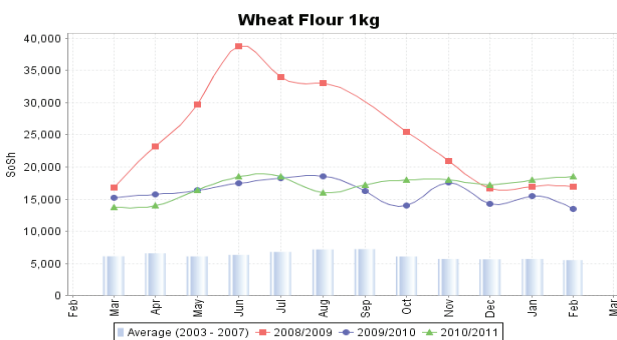
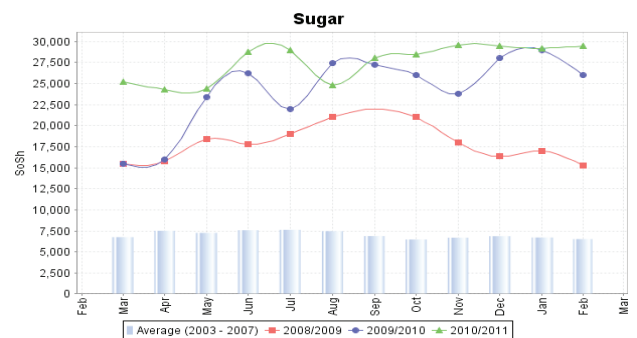
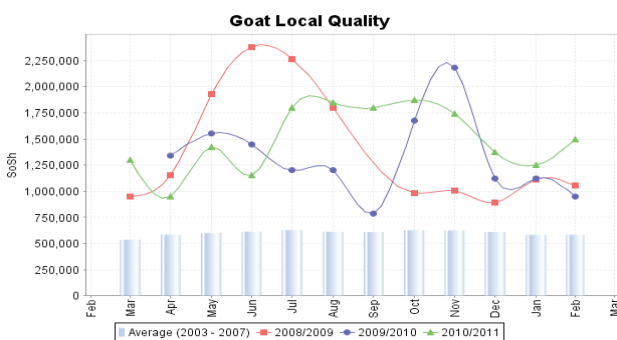
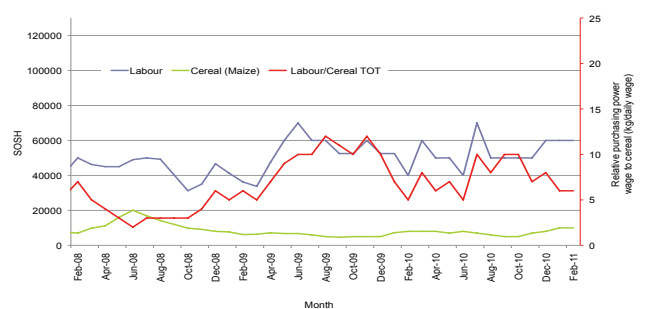


Figure 15: Bakara: Trends in Wage Rates, Staple Cereal Prices and Relative Purchasing Power



# Regional analysis: Central Regions

Indicator	5-Year Average	Feb-10	Jan-11	Current Nominal Price	Current Real Price (Deflated)	% Change Same Month Previous Year	% Change Previous Month	% Change 5-year avrg (2003-07)
<b>Imported Commodities Prices</b>								
Diesel 1 litre	9,720	29,700	35,060	35,450	12,908	19%	1%	265%
Imported Red Rice 1kg	7,048	26,400	27,840	28,400	10,321	8%	2%	303%
Petrol 1 litre	10,941	27,400	31,920	31,850	11,587	16%	0%	191%
Sugar	8,900	31,200	35,200	35,280	12,846	13%	0%	296%
Vegetable Oil 1 litre	17,243	53,000	54,850	58,750	21,458	11%	7%	241%
Wheat Flour 1kg	7,273	20,050	21,800	22,820	8,274	14%	5%	214%
Wheat Grain 1kg	6,458	14,333	17,133	18,333	6,627	28%	7%	184%
<b>Cereal Prices</b>								
Red Sorghum 1kg	4,073	11,150	16,588	17,175	6,202	54%	4%	322%
White Maize 1kg	4,211	14,600	18,275	18,250	6,597	25%	0%	333%
<b>Livestock &amp; Livestock Product Prices</b>								
Camel Local Quality (Head)	2,217,325	8,725,000	7,787,500	7,787,500	2,857,456	-11%	0%	251%
Cattle Local Quality (Head)	1,568,916	2,350,000	-	-	-	-	-	-
Fresh Camel Milk 1 litre	9,439	51,400	42,150	42,600	15,532	-17%	1%	351%
Goat Export Quality (Head)	353,550	1,230,000	1,310,000	1,458,333	535,023	19%	11%	312%
Goat Local Quality (Head)	280,250	885,000	952,200	977,400	358,549	10%	3%	249%
<b>Other Essential Items</b>								
Charcoal 50kg	51,641	213,500	199,300	220,000	80,627	3%	10%	326%
Cowpeas 1 kg	6,453	24,200	34,410	36,400	13,257	50%	6%	464%
Unskilled Labor Wage Rate	33,600	85,750	81,750	80,000	29,255	-7%	-2%	138%
Firewood Bundle	3,313	23,413	32,000	33,800	12,303	44%	6%	920%
Local Sesame Oil 1 litre	28,363	101,500	95,300	95,000	34,759	-6%	0%	235%
Exchange Rate (Somali Shilling per USD)	16,186	31,155	30,848	30,775	11,193	-1%	0%	90%
<b>Construction Materials*</b>								
Cement 50kg	-	-	329,500	328,000	120,257	-	0%	-
Cooking Pot Aluminium 7 Litre	-	-	492,000	408,000	149,612	-	-17%	-
Galvanised Iron Sheet Ga 26	-	-	148,790	155,775	57,060	-	5%	-
Hollow Concrete Block 10cm x 20cm x 40cm	-	-	16,750	16,200	5,844	-	-3%	-
Non Collapsible Jerrycan 10 Litre	-	-	42,500	50,000	18,247	-	18%	-
Plastic Tarpaulin 14m x 5 m	-	-	306,000	306,000	112,184	-	0%	-
Roofing Nails 15Kg	-	-	810,688	811,940	297,834	-	0%	-
Timber 2in x 4in x 20ft	-	-	151,600	151,600	55,528	-	0%	-
Woven Dry Raised Blanket 150cm x 200cm	-	-	174,400	134,000	49,070	-	-23%	-
<b>Terms of Trade</b>								
Labour Wage (Daily)/ Cereal (Rice(Kg))	5	3	3	3	3	-13%	-4%	-41%
Local Goat (Head)/ Cereal (Rice(Kg))	40	34	34	34	35	3%	1%	-13%
Camel (Head)/Cereal (Kg)	315	330	280	274	277	-17%	-2%	-13%
<b>Price Indices</b>								
Consumer Price Index	-	236	268	273	-	15%	2%	-
Purchasing Power Index	-	0.42	0.37	0.37	-	-13%	-2%	-

\* Data has been collected for the past 9 months only

Figure 16: Imported commodity prices compared to exchange rates

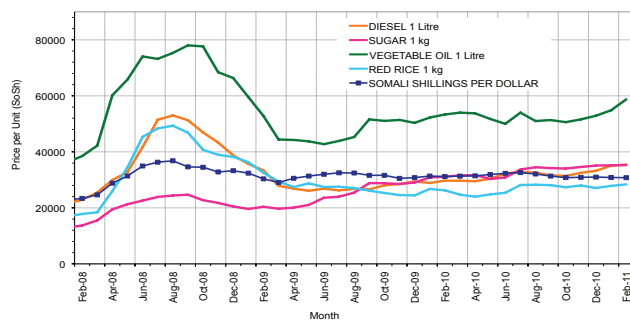
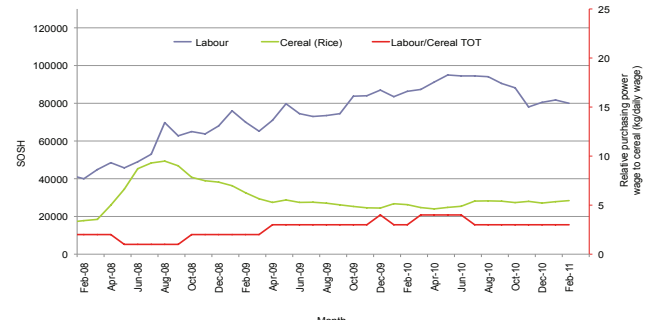
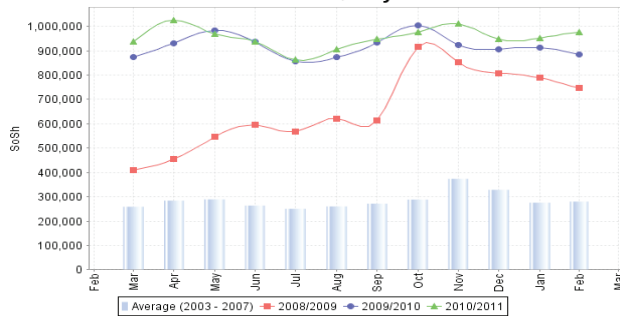


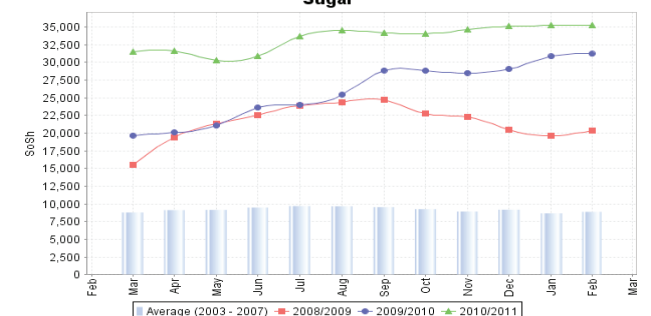
Figure 17: Trends in wage rates, staple cereal prices and relative purchasing power



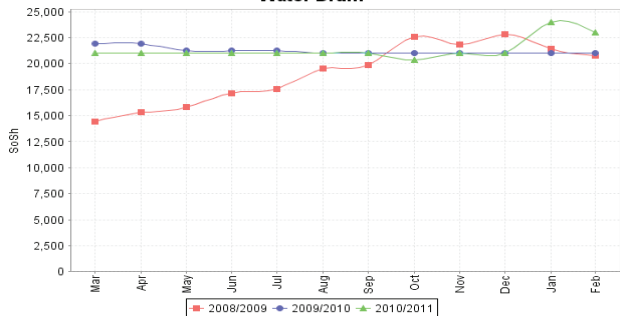
Goat Local Quality



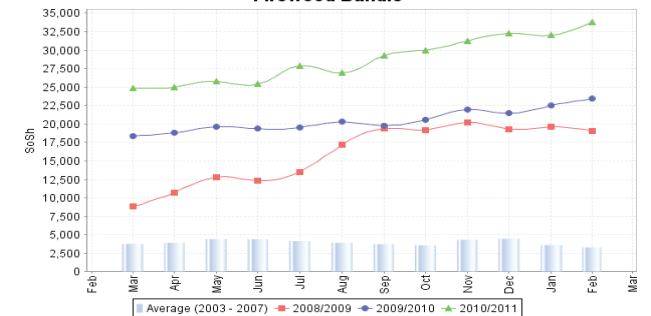
Sugar



Water Drum



Firewood Bundle





# Regional analysis: Northeast Regions

Indicator	5-Year Average	Feb-10	Jan-11	Current Nominal Price	Current Real (Deflated) Price	% Change Same Month Previous Year	% Change Previous Month	% Change 5-year avrg (2003-07)
<b>Imported Commodities Prices</b>								
Diesel 1 litre	8,185	25,688	33,188	32,313	12,790	26%	-3%	295%
Imported Red Rice 1kg	6,148	21,063	22,313	22,375	8,826	6%	0%	264%
Petrol 1 litre	9,373	24,688	27,875	28,188	11,145	14%	1%	201%
Sugar	8,275	28,625	31,250	31,250	12,366	9%	0%	278%
Vegetable Oil 1 litre	16,511	44,063	45,750	51,375	20,395	17%	12%	211%
Wheat Flour 1kg	6,681	16,938	19,750	19,875	7,829	17%	1%	197%
Wheat Grain 1kg	7,100	28,250	28,500	28,875	11,419	2%	1%	307%
<b>Cereal Prices</b>								
Red Sorghum 1kg	6,612	16,688	17,938	21,000	8,277	26%	17%	218%
White Maize 1kg	5,533	16,917	20,000	22,333	8,809	32%	12%	304%
<b>Livestock &amp; Livestock Product Prices</b>								
Camel Local Quality (Head)	2,982,916	10,631,250	12,362,500	13,418,750	5,352,947	26%	9%	350%
Cattle Local Quality (Head)	1,493,125	5,000,000	6,500,000	7,000,000	2,792,361	40%	8%	369%
Fresh Camel Milk 1 litre	13,376	44,104	46,750	47,229	18,741	7%	1%	253%
Goat Export Quality (Head)	402,500	1,292,500	1,342,500	1,306,250	520,993	1%	-3%	225%
Goat Local Quality (Head)	377,875	1,071,875	1,211,875	1,206,250	481,101	13%	0%	219%
<b>Other Essential Items</b>								
Charcoal 50kg	72,433	266,875	380,938	373,750	148,997	40%	-2%	416%
Cowpeas 1 kg	9,500	31,000	33,000	32,333	12,798	4%	-2%	240%
Unskilled Labor Wage Rate	43,833	106,250	110,000	111,000	44,180	4%	1%	153%
Firewood Bundle	6,100	30,063	33,125	32,500	12,865	8%	-2%	433%
Local Sesame Oil 1 litre	31,208	98,333	83,333	85,833	34,141	-13%	3%	175%
Exchange Rate (Somali Shilling per USD)	16,565	31,969	31,125	31,063	12,292	-3%	0%	88%
<b>Construction Materials*</b>								
Cement 50kg	-	-	229,250	235,625	93,896	-	3%	-
Cooking Pot Aluminium 7 Litre	-	-	337,500	434,375	173,182	-	29%	-
Galvanised Iron Sheet Ga 26	-	-	335,188	235,000	93,647	-	-30%	-
Hollow Concrete Block 10cm x 20cm x 40cm	-	-	12,438	12,375	4,837	-	-1%	-
Non Collapsible Jerrycan 10 Litre	-	-	37,500	40,938	16,231	-	9%	-
Plastic Tarpaulin 14m x 5 m	-	-	207,500	201,875	80,433	-	-3%	-
Roofing Nails 15Kg	-	-	440,875	463,688	184,876	-	5%	-
Timber 2in x 4in x 20ft	-	-	214,563	222,188	88,536	-	4%	-
Woven Dry Raised Blanket 150cm x 200cm	-	-	270,938	266,250	106,113	-	-2%	-
<b>Terms of Trade</b>								
Labour Wage (Daily)/ Cereal (Rice)(Kg)	7	5	5	5	5	-2%	1%	-30%
Local Goat (Head)/ Cereal (Rice)(Kg)	61	51	54	54	55	6%	-1%	-12%
<b>Price Indices</b>								
Consumer Price Index	-	220	232	251	-	14%	8%	-
Purchasing Power Index	-	0.46	0.43	0.40	-	-12%	-7%	-

\* Data has been collected for the past 9 months only

Figure 18: Imported commodity prices compared to exchange rates

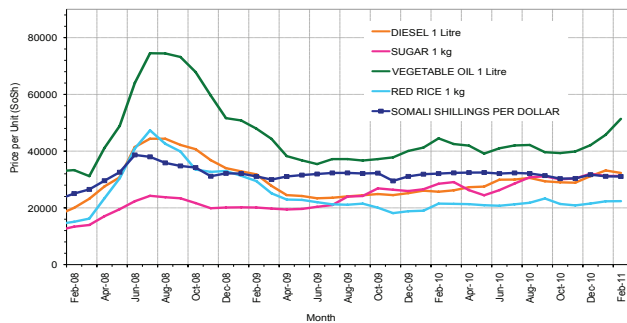
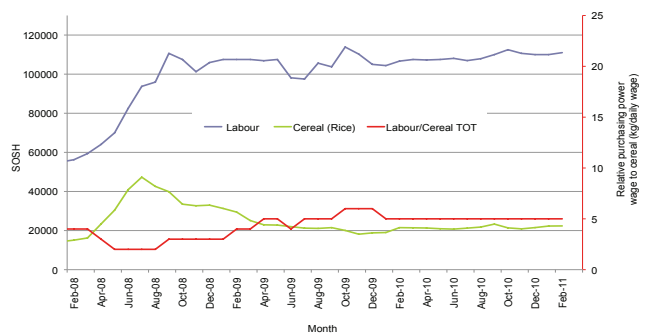
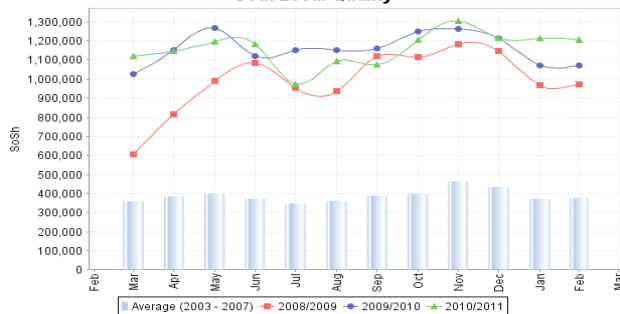


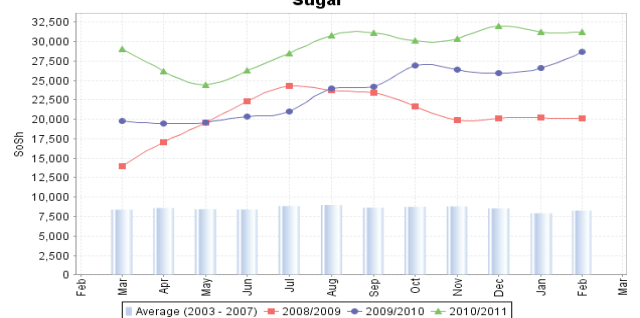
Figure 19: Trends in wage rates, staple cereal prices and relative purchasing power



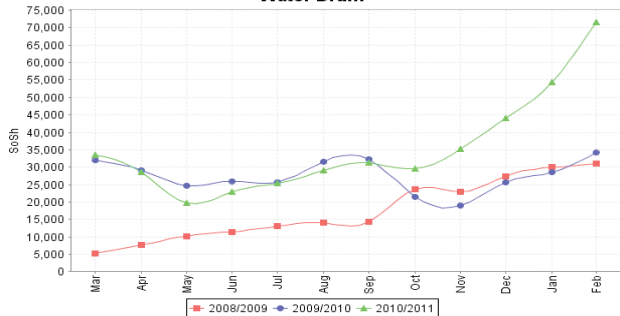
Goat Local Quality



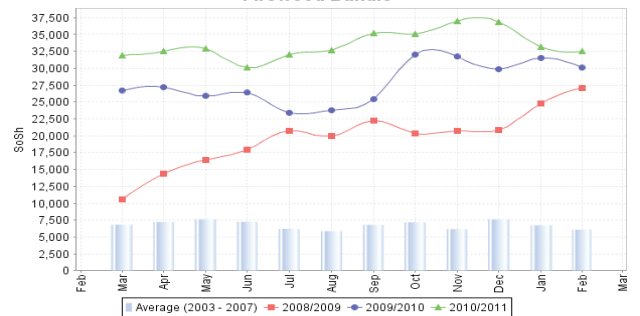
Sugar



Water Drum



Firewood Bundle



# Regional analysis: Northwest Regions

Indicator	5-Year Average	Feb-10	Jan-11	Current Nominal Price	Current Real (Deflated) Price	% Change Same Month Previous Year	% Change Previous Month	% Change 5-year avrg (2003-07)
<b>Imported Commodities Prices</b>								
Diesel 1 litre	3,507	4,950	5,206	5,150	4,418	4%	-1%	47%
Imported Red Rice 1kg	2,893	5,463	5,244	4,619	3,952	-15%	-12%	60%
Petrol 1 litre	4,308	5,275	5,375	5,400	4,638	2%	0%	25%
Sugar	3,354	6,450	5,713	5,950	5,120	-8%	4%	77%
Vegetable Oil 1 litre	6,887	10,625	8,500	9,500	8,235	-11%	12%	38%
Wheat Flour 1kg	2,900	4,225	3,975	3,750	3,190	-11%	-6%	29%
Wheat Grain 1kg	2,108	2,500	2,267	2,333	1,947	-7%	3%	11%
<b>Cereal Prices</b>								
White Sorghum 1kg	1,852	2,333	2,656	2,625	2,203	13%	-1%	42%
Yellow Maize 1kg	1,807	3,187	2,500	2,300	1,918	-28%	-8%	27%
<b>Livestock &amp; Livestock Product Prices</b>								
Camel Local Quality (Head)	1,485,625	1,640,000	1,670,833	1,600,000	1,403,666	-2%	-4%	8%
Cattle Local Quality (Head)	850,916	1,550,000	1,064,063	1,167,500	1,024,211	-25%	10%	37%
Fresh Camel Milk 1 litre	4,620	5,375	4,788	5,250	4,506	-2%	10%	14%
Goat Export Quality (Head)	166,937	274,250	280,500	284,688	249,672	4%	1%	71%
Goat Local Quality (Head)	148,260	218,333	223,125	216,563	189,902	-1%	-3%	46%
<b>Other Essential Items</b>								
Charcoal 50kg	18,299	29,938	34,875	31,281	27,345	4%	-10%	71%
Cowpeas 1 kg	4,516	10,375	7,375	8,500	7,358	-18%	15%	88%
Unskilled Labor Wage Rate	28,201	31,000	28,750	28,250	24,685	-9%	-2%	0%
Firewood Bundle	3,997	3,000	1,600	2,300	1,918	-23%	44%	-42%
Local Sesame Oil 1 litre	17,795	28,083	20,563	22,083	19,275	-21%	7%	24%
Exchange Rate (Somaliland Shilling per USD)	6,704	6,455	5,647	5,465	-	-15%	-3%	-18%
<b>Construction Materials*</b>								
Cement 50kg	-	-	43,313	40,819	35,713	-	-6%	-
Cooking Pot Aluminium 7 Litre	-	-	91,000	99,875	87,526	-	10%	-
Galvanised Iron Sheet Ga 26	-	-	55,000	50,300	44,031	-	-9%	-
Hollow Concrete Block 10cm x 20cm x 40cm	-	-	3,375	3,325	2,817	-	-1%	-
Non Collapsible Jerrycan 10 Litre	-	-	6,825	6,750	5,822	-	-1%	-
Plastic Tarpaulin 14m x 5 m	-	-	57,375	59,375	51,993	-	3%	-
Roofing Nails 15Kg	-	-	151,500	150,688	132,107	-	-1%	-
Timber 2in x 4in x 20ft	-	-	130,750	121,950	106,893	-	-7%	-
Woven Dry Raised Blanket 150cm x 200cm	-	-	69,375	64,500	56,489	-	-7%	-
<b>Terms of Trade</b>								
Labour Wage (Daily)/ Cereal (Rice(Kg))	10	6	5	6	6	8%	12%	-37%
Local Goat (Head)/ Cereal (Rice(Kg))	51	40	43	47	48	17%	10%	-9%
<b>Price Indices</b>								
Consumer Price Index	-	113	108	114	-	1%	6%	-
Purchasing Power Index	-	0.88	0.93	0.88	-	-1%	-5%	-

\* Data has been collected for the past 9 months only

Figure 20: Imported commodity prices compared to exchange rates

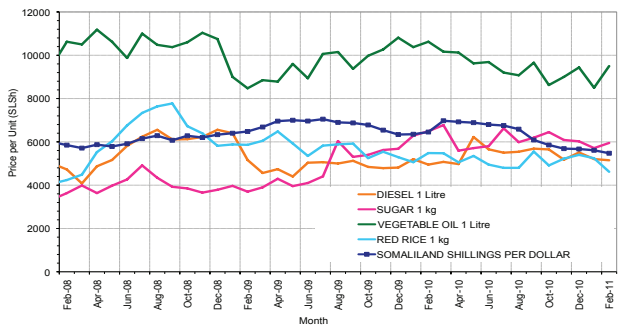
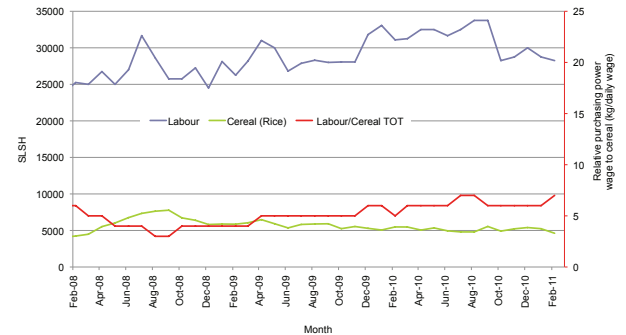
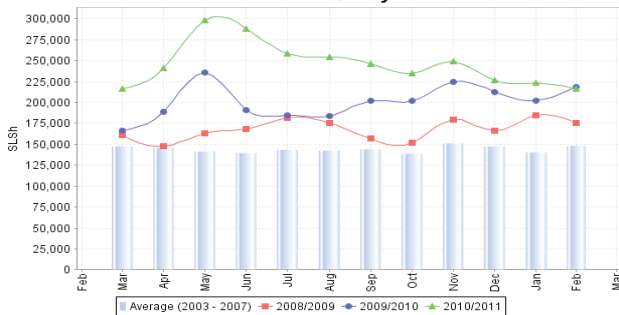


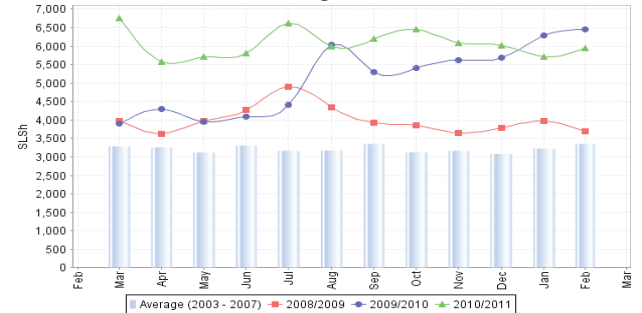
Figure 21: Trends in wage rates, staple cereal prices and relative purchasing power



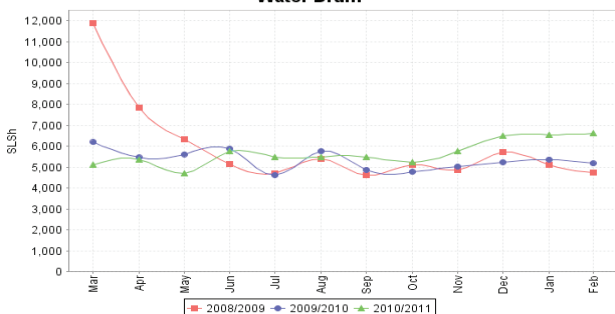
Goat Local Quality



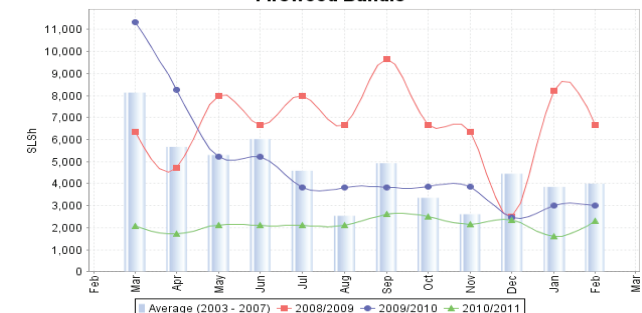
Sugar



Water Drum



Firewood Bundle



# Trends in Livestock Exports

Table 1: Berbera Livestock Exports (Number of Heads)

	1994	1995	1996	1997	1998	1999	2000	2001	2002	2003	2004	2005	2006	2007	2008	2009	2010	2011
Shoats	1,572,656	2,683,597	2,376,646	2,814,495	957,224	2,048,136	1,601,083	51,546	341,711	563,107	859,404	1,023,795	1,017,242	1,350,054	1,219,519	1,556,003	2,584,810	157,651
Cattle	173,400	167,128	65,127	66,939	92,213	89,967	63,263	20,973	37,547	84,312	131,852	148,151	85,631	88,143	80,051	88,005	133,021	24,869
Camel	38,553	21,993	42,801	50,587	11,663	37,430	16,984	3,473	18,864	21,874	5,147	5,069	22,810	14,245	26,515	20,206	92,651	22,129

Figure 12: Berbera Livestock Exports (Number of Heads)

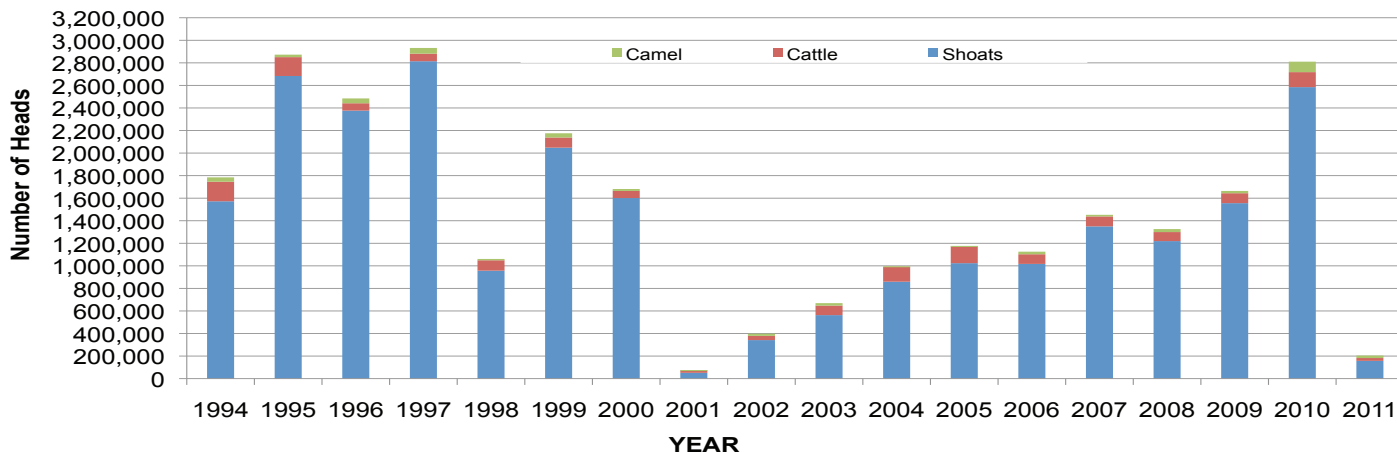


Table 2: Bossaso Livestock Exports (Number of Heads)

	1994	1995	1996	1997	1998	1999	2000	2001	2002	2003	2004	2005	2006	2007	2008	2009	2010	2011
Shoats	344,000	524,346	614,407	494,320	517,020	633,669	571,455	548,853	1,412,450	1,483,409	1,166,480	1,594,859	1,777,283	1,522,855	1,236,775	1,159,454	1,334,478	108,669
Cattle	1,450	8,795	15,335	17,831	29,492	36,586	27,604	42,248	53,313	71,328	79,994	91,910	104,595	89,190	78,046	67,385	103,808	17,934
Camel	5,397	8,392	20,462	14,599	3,938	15,544	8,177	1,950	9,720	4,259	2,488	26,109	33,724	27,580	27,639	15,331	36,865	10,979

Figure 23: Bossaso Livestock Exports (Number of Heads)

