

Market DataUpdate

December 2012



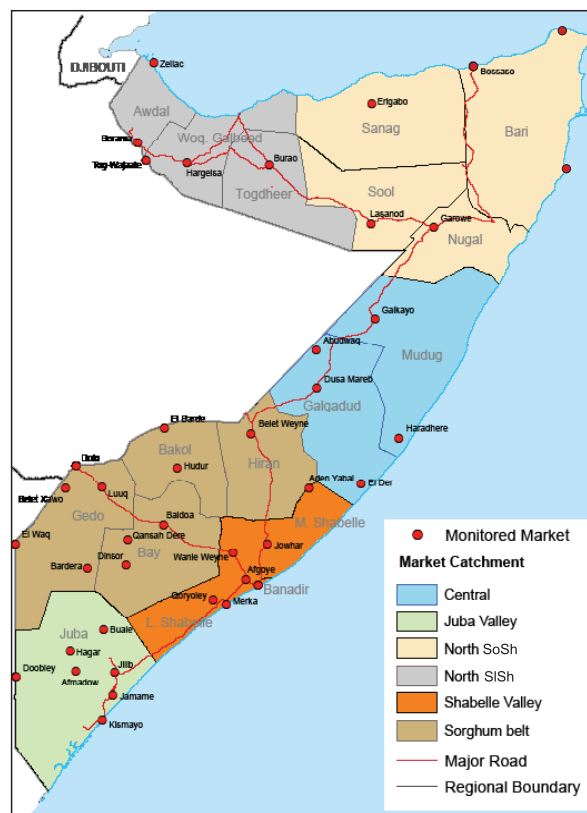
Food Security and Nutrition
Analysis Unit - Somalia



Issued January 31st, 2013

Highlights

- Inflation:** The December Consumer Price Index (CPI) declined slightly in South-Central while remaining relatively stable in most regions of the North. The December 2012 inflation compared to the same month a year ago was low in Somali shilling (SoSh) areas but relatively higher in SISH regions where it is slightly elevated. In Somali Shilling (SoSh) areas, the minimum cost of living is significantly higher than it was in the base period (March 2007); it is moderately up in SISH areas.
- Exchange rate** between SoSh and the US Dollar (USD) remained relatively stable over the month under review while the SISH currency lost slight ground to the greenback. Over the past year, SISH has depreciated against the USD, whereas SoSh has gained value. The annual appreciation of the SoSh is attributed to inflow of dollars through humanitarian interventions, *Hajj* livestock exports and intensified investments in infrastructure rebuilding and reconstruction in Mogadishu; increased port functioning and emerging economic and business opportunities, particularly in the capital. The weakened SISH is due to increased supply and circulation of new higher denomination currency notes.
- Local grain** prices were mixed- decreased in Hiraan, Banadir, Central and the key producing regions of Bay and Lower Shabelle but remained stable in all other regions. Various factors, including good *Deyr* 2012 crop production, cereal trade flows to deficit areas, reduced prices of imported food and humanitarian food supply, have impacted on cereal prices. Compared to a year ago, cereal prices are significantly lower in the South, Central and North SoSh zones but stable in the North SISH areas.
- Prices of most imported commodities** declined slightly in most SoSh markets in December 2012. Compared to the same period last year, imported commodity prices are significantly lower. The decline in prices of imported food is mainly attributed to the strengthened SoSh and improved port functioning.
- Livestock prices** either remained stable or declined slightly in most markets except in SISH regions where they appreciated marginally. The reductions in monthly prices are due to reduced demand following the end of *Hajj*. Livestock prices are significantly higher than a year ago in all monitored markets as a result of improved body conditions and high demand from ongoing restocking activities.
- Labour wages** sustained their levels or reduced slightly in many regions in line with seasonal reduction in labour opportunities at the end of harvest in crop producing areas. Labour wages are significantly higher compared to their levels a year ago in most markets.
- Terms of Trade (ToT)** between labour wage and cereals were mixed, mostly improving on the backdrop of reduced cereal prices. The purchasing power of the poor mostly relying on casual labour has improved over the past year as a result of lower cereal prices, improved local quality goat prices and higher labour wages.



This Market Data Update is a monthly report that presents a compilation of tabulated graphical market information produced regularly as part of the monthly monitoring process.

The weekly price data is collected from 47 main markets throughout Somalia since 1995.

Market analysis is an integral part of all of FSNAU's Annual Food Security Projections and seasonal technical reports (Technical Reports on FSNAU Post *Cu* and *Deyr* Analysis).

This data is available online on www.fsnau.org/ids.

Funding Agencies



Regional Market Highlights

- **Juba Valley:** Prices of imported food reduced slightly, while those of cereals remained stable in December. Monthly cattle prices slightly picked-up but goat prices reduced. The ToT (11Kg/daily wage rate) sustained previous month's level. Compared to a year ago, prices are significantly lower for imported food and local cereals, whereas they are considerably higher for livestock. Annual comparisons of ToT between labor and cereals also indicate a significant rise.
- **Sorghum Belt:** Monthly price changes indicate a slight reduction for imported food, sorghum and livestock. The ToT between labour and cereals increased by one unit from their November level. Annual price changes indicate a significant decrease for imports and local cereals and a remarkable increase for livestock. As a result, the ToT has almost tripled (22kg/daily wage) in Bay region over the past year; it has increased slightly in the rest of the Sorghum Belt regions.
- **Shabelle Valley:** Monthly prices of imported food, maize and livestock declined. The monthly ToT is nearly at November 2012 levels (14kg for a day's worth of labour). Prices of most imported commodities and cereals are significantly lower while prices of livestock are significantly higher compared to the levels in December 2011.
- **Central:** Imported food, livestock and local cereal prices decreased slightly in December. Annual comparisons indicate significant decreases in the prices of all items except livestock, which is significantly higher. ToT (rice/ local goat) declined in December 2012 but is significantly higher when compared to the same month last year, currently standing at 58kg/ local goat.
- **Northeast:** Monthly price decrease was recorded for sorghum and imported food, while livestock quotations nearly sustained the November levels. Annual price comparisons show significant decline for imported commodities and red sorghum while those of livestock are near December 2011 levels. ToT (rice/ local goat) reduced by 8 percent over the month of December (79kg/local goat) but is significantly higher when compared to the same month in 2011.
- **Northwest:** Prices of imported food and local cereals remained stable while the value of livestock appreciated slightly in December. Compared to December 2011, the prices have reduced for locally produced cereals; imports show mixed trends, while livestock prices are significantly inflated. The monthly ToT between local white sorghum and wages increased slightly but is significantly higher than in the same month in 2011, currently equivalent to about 12kg/daily wage rate.
- **Banadir:** monthly prices of locally produced cereals, imported food reduced moderately but increased for a local goat. With the exception of highly valued goats, prices of imported and locally produced food are significantly below their levels a year ago. ToT cereal (maize/ labour wage) increased by 3kgs to close at 18 kgs/ daily labour rate.

Table 1: Monthly and Annual Changes in Terms of Trade-Cereals (kg) per Daily Labour Wage Rate

Region	Cereal used	Dec. 2011	Nov. 2012	Dec. 2012	Monthly change	Annual change
		(kg/daily wage)	(kg/daily wage)	(kg/daily wage)	(%)	(%)
Banadir	White Maize	12	15	18	20	50
Bay	Red Sorghum	8	23	22	-4	175
Bakool	Red Sorghum	6	7	6	-14	0
Gedo	Red Sorghum	18	15	18	20	0
Hiraan	White Maize	15	18	22	22	47
Juba	White Maize	5	11	11	0	120
Shabelle	White Maize	9	14	14	0	56
Northeast	Red Sorghum	4	7	7	0	75
Northwest	White Sorghum	9	11	12	9	33
Central	Red Sorghum	6	8	8	0	33

International Market Highlights

Diesel: Crude oil prices¹ remained relatively stable in early December but “edged higher as 2012 drew to a close”, posting an average of USD 107. According to the Monthly Oil Market Report (Jan 2013)², the price appreciation has extended into early January and is mainly due to seasonally stronger winter demand and persistent geopolitical concerns in key producing countries. The quotations are stable when compared to December 2011 levels.

In Somalia Port Cities (Bossaso and Mogadishu), the December 2012 diesel prices remained relatively stable compared to their levels in the previous month. The current prices are significantly lower (21-31%) than the same month last year, supported by appreciated SoSh as well increased supplies through local ports. The price differential (the gap between domestic diesel and global crude oil prices) has reduced over the past year (since Dec. ‘11) - from 49 to 16 percent in Mogadishu and from 35 to 4 percent in Bossaso. The narrowing price gap signifies the influence of local factors on the current price trends in Somalia (Figure 1).

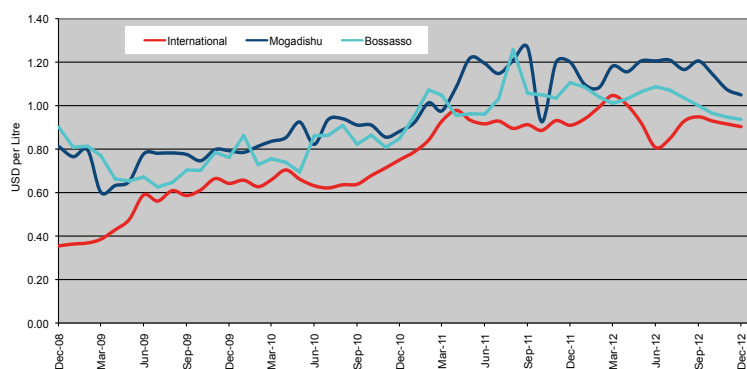
Rice: The benchmark Thai rice export price (Thai A1 Super 1/ B) stabilized in December³, averaging USD 546 per tonne and closing about 3 percentage points below the level the same month a year ago. The relative price stability was supported by expectation of good harvests⁴ as well as limited export interest⁵.

December prices of imported rice in Bossaso and Mogadishu port markets declined marginally (2-5%) but were significantly lower (27-36%) than their levels the same month a year ago. The annual price trends could be attributed to appreciated Somali Shilling against the USD and higher supplies through improved port functioning. The gap between international and domestic rice markets has narrowed down from 57 percent in December last year to 17 percent currently in Mogadishu, and from 48 percent to 37 percent in Bossaso (Figure 2).

Wheat: The December wheat prices changed little under subdued trade activity, with the International Grain Council (IGC) index closing at 286 just four points below its level the previous month. Annual comparisons however indicate significant increase; the IGC wheat index accelerated from 235 points in December 2011 to 286 currently (22% increase)⁶.

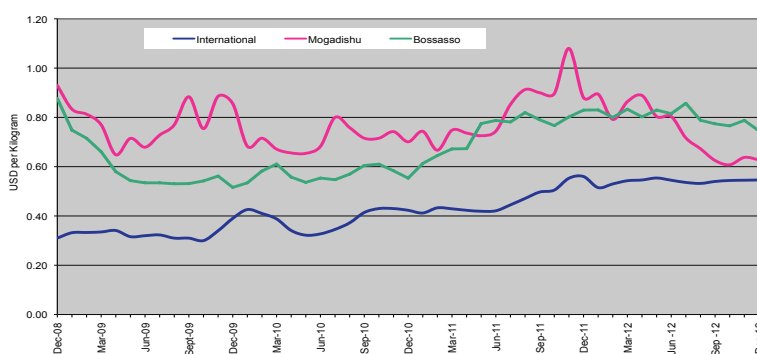
End year wheat flour prices were stable in Bossaso; decreased slightly in Mogadishu but were somewhat lower (10-24%) than December 2011 levels.

Figure 1: Diesel Prices: Dubai, Mogadishu and Bossaso



Source: FAO Statistics, FEWSNET and FSNAU Market Price Monitoring System, 2012

Figure 2: Rice Prices: Bangkok FOB, Mogadishu and Bossaso Markets



Source: FAO Statistics, FEWSNET and FSNAU Market Price Monitoring System, 2012

Figure 3: International Wheat Prices



Source: International Grain Council

¹ In Abu Dhabi (Dubai) the main source of Somalia's oil imports

² Published by International Energy Agency (IEA) in collaboration with Organization of Petroleum Exporting Countries (OPEC)

³ The World Food Situation: The FAO Food Price Index January 2013

⁴ Ibid

⁵ International Grain Council, Grain Market Report 429 – 17 Jan 2013

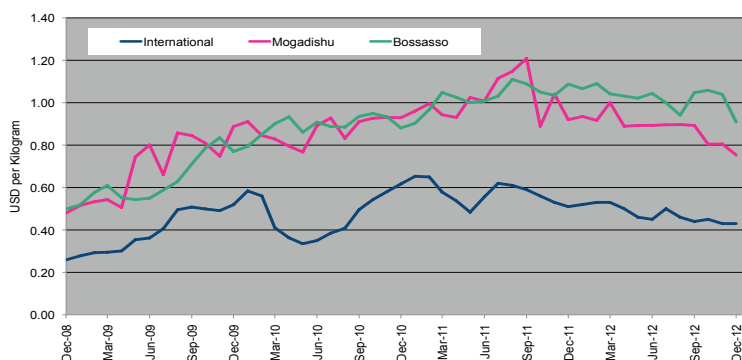
⁶ Ibid;

International Market Highlights

Sugar: The **FAO Sugar Price Index**⁷ averaged 274 in December, down marginally from November, a lowest value since August 2010. The FAO index averaged 306 in 2012, down 17.1 percent from the previous year. The expectation of a third consecutive increase in global production and large export availabilities in the 2012/13 marketing season, notably in Brazil, have driven the international prices downwards for much of the second half of 2012.

The December sugar prices in Bossaso and Mogadishu declined when compared to the previous month (7-12%) as well as to the same in 2011 (27-32%) bolstered by increased supplies through commercial imports and humanitarian assistance.

Figure 4: Sugar Prices: International, Mogadishu and Bossaso Markets



Source: International Sugar Organization, FEWSNET and FSNAU Market Price Monitoring System, 2012

Cooking Oil: the **FAO Oils/Fats Price Index**⁸ averaged 197 in December, down 4 points (1.9 percent) from November, the fourth consecutive month of decline and the lowest level since September 2010. The main reason for the price fall in December is the continued build-up of large global inventories of palm oil as a result of abundant production in Southeast Asia coincided with a protracted weakness of import demand. The decline in the index would have been even stronger without the prospect of both a tight global supply and demand situation for soybean oil during the next two to three months and lower than anticipated availabilities of sunflower-seed oil.

On the domestic front, vegetable oil prices remained relatively stable over the previous month in Bossaso; dropped significantly in both port towns when compared to December 2011, the latter attributable to stronger SoSh, continued humanitarian interventions and improved port activities.

⁷ The World Food Situation: The FAO Food Price Index January 10th 2013

⁸ Ibid

National Trends: CPI, Exchange Rates, Cereal Prices and Relative Purchasing Power

Figure 5: Terms of Trade between wage rates and selected cereals

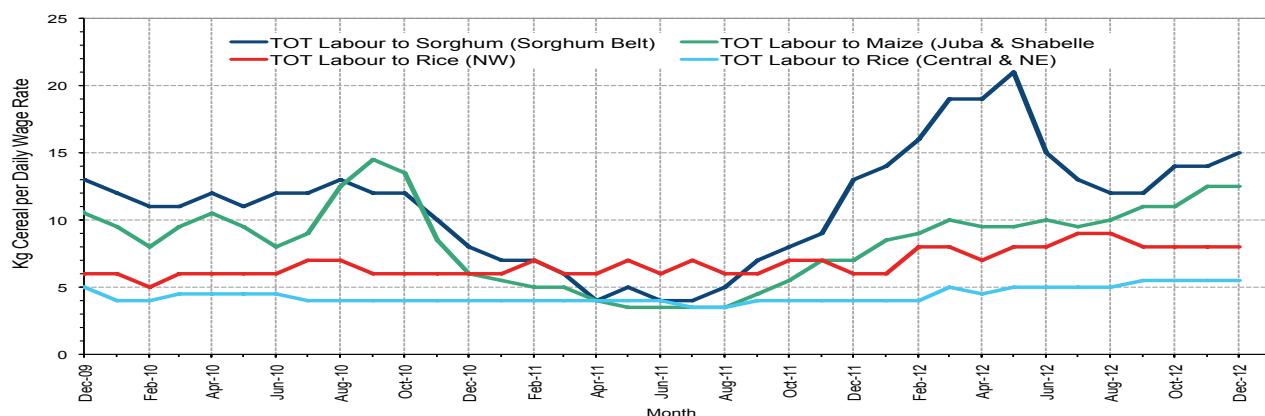


Figure 6: Monthly Exchange Rate for Selected Regions (SoSh and SiSh to USD)

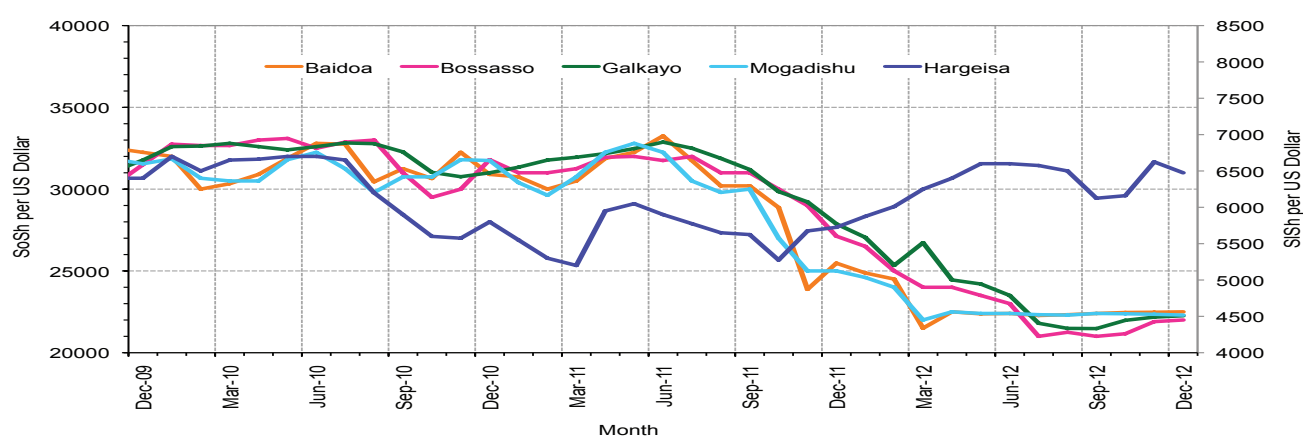


Figure 7: Monthly Trends in Consumer Price Index (CPI, March 2007=100)

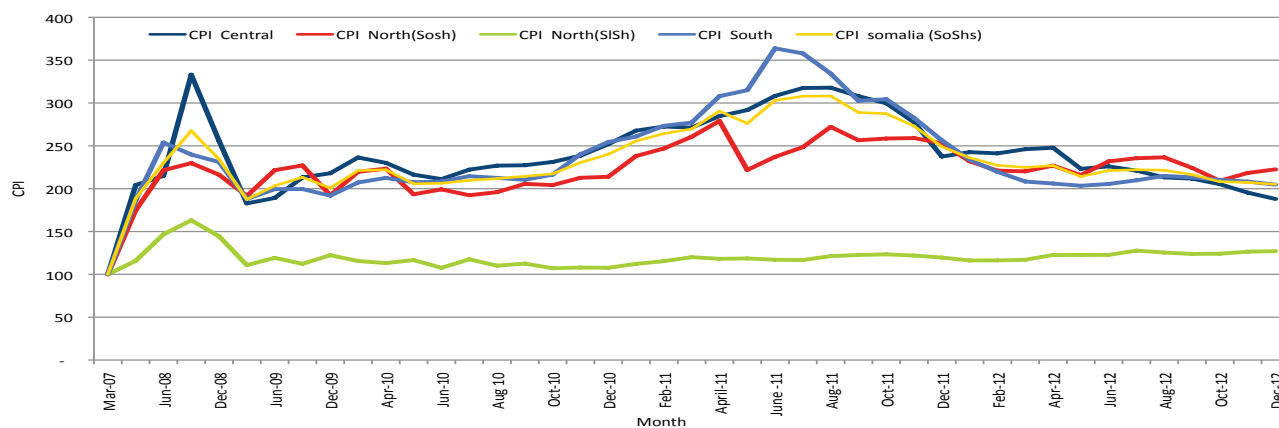
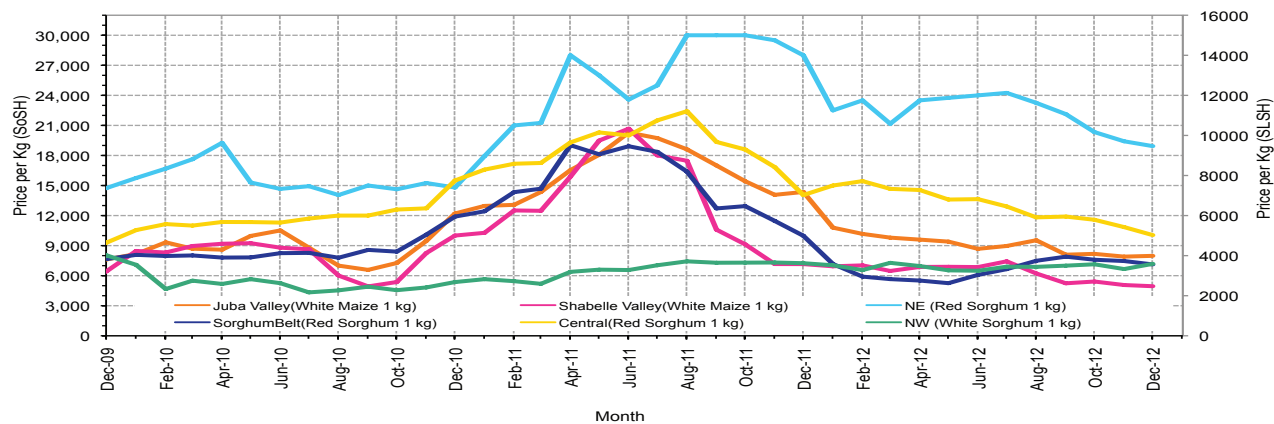


Figure 8: Monthly Trends in Local Cereal Prices



Regional analysis: Juba Regions

Indicator	5-Year Average (2003-07)	Dec-11	Nov-12	Dec-12 Nominal Price	Dec-12 Real (Deflated) Price	% Change Same Month Previous Year	% Change Previous Month	% Change 5-year avrg (2003-07)
Imported Commodities Prices								
Diesel 1 litre	14,453	39,964	32,571	31,371	15,225	-22%	-4%	117%
Imported Red Rice 1kg	9,537	26,214	17,714	18,564	8,969	-29%	5%	95%
Petrol 1 litre	15,988	35,893	33,464	33,100	16,070	-8%	-1%	107%
Sugar	9,082	35,321	21,893	21,457	10,382	-39%	-2%	136%
Vegetable Oil 1 litre	20,768	53,893	41,214	43,617	21,208	-19%	6%	110%
Wheat Flour 1kg	9,488	22,429	17,500	17,229	8,317	-23%	-2%	82%
Wheat Grain 1kg	7,500	28,000	-	-	-	-	-	-
Red Sorghum 1kg	2,816	-	6,250	6,400	3,027	-	2%	127%
White Maize 1kg	2,833	14,357	8,264	8,346	3,977	-42%	1%	195%
Livestock & Livestock Product Prices								
Camel Local Quality (Head)	3,570,767	8,211,667	9,459,583	9,559,000	4,669,654	16%	1%	168%
Cattle Local Quality (Head)	1,742,153	3,745,833	4,408,833	4,678,567	2,285,469	25%	6%	169%
Fresh Camel Milk 1 litre	6,492	20,333	20,500	20,200	9,768	-1%	-1%	211%
Goat Export Quality (Head)	485,101	1,363,929	1,863,036	1,822,314	890,135	34%	-2%	276%
Goat Local Quality (Head)	372,430	856,190	1,134,429	1,081,329	528,150	26%	-5%	190%
Other Essential Items								
Charcoal 50kg	31,423	74,821	95,357	112,450	54,834	50%	18%	258%
Cowpeas 1 kg	6,309	38,750	19,464	20,114	9,726	-48%	3%	219%
Unskilled Labor Wage Rate	31,713	67,500	88,107	92,479	45,078	37%	5%	192%
Firewood Bundle	2,262	6,857	9,107	9,100	4,346	33%	0%	302%
Local Sesame Oil 1 litre	23,772	89,786	70,839	75,693	36,877	-16%	7%	218%
Exchange Rate (Somali Shilling per USD)	16,337	26,375	22,736	22,289	10,789	-15%	-2%	36%
Construction Materials*								
Cement 50kg	-	335,000	392,321	265,960	129,827	-21%	-32%	-
Cooking Pot Aluminium 7 Litre	-	328,500	314,583	319,417	155,941	-3%	2%	-
Galvanised Iron Sheet Ga 26	-	177,500	113,458	120,029	58,536	-32%	6%	-
Hollow Concrete Block 10cm x 20cm x 40cm	-	20,000	15,000	15,300	7,374	-24%	2%	-
Non Collapsible Jerrycan 10 Litre	-	38,333	36,458	36,042	17,507	-6%	-1%	-
Plastic Tarpaulin 14m x 5 m	-	483,125	320,214	339,571	165,787	-30%	6%	-
Roofing Nails 15Kg	-	789,286	686,071	788,500	385,097	0%	15%	-
Timber 2in x 4in x 20ft	-	336,000	253,625	243,800	119,001	-27%	-4%	-
Woven Dry Raised Blanket 150cm x 200cm	-	-	69,063	58,250	28,356	-	-16%	-
Terms of Trade								
Labour Wage (Daily)/ Cereal (Maize(Kg))	11	5	11	11	-	136%	4%	-1%
Local Goat (Head)/ Cereal (Maize(Kg))	131	60	137	130	-	117%	-6%	-1%
Price Indices								
Consumer Price Index	-	256	208	205	-	-20%	-2%	-
Purchasing Power Index	-	0.39	0.48	0.49	-	25%	2%	-

* Data has been collected since May 2010

Figure 8: Imported commodity prices compared to exchange rates

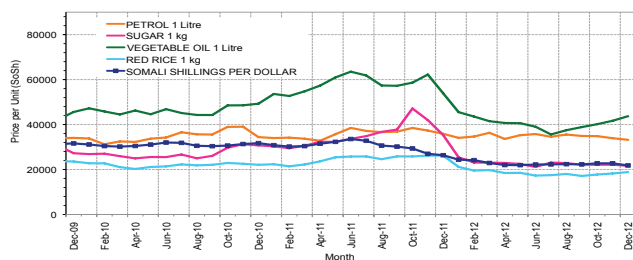


Figure 10: Goat Local Quality

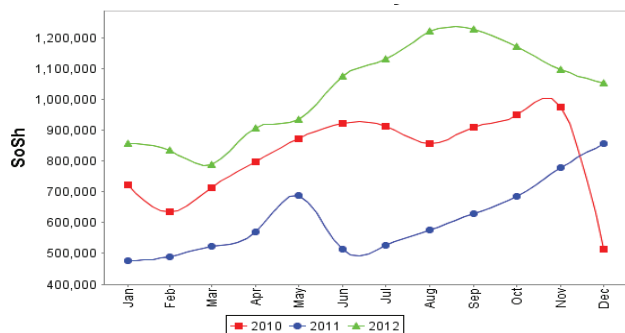


Figure 12: Water Drum

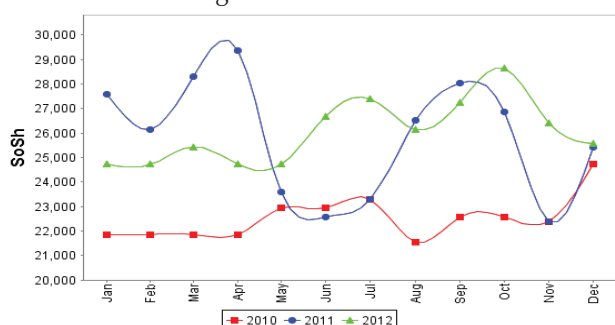


Figure 9: Trends in wage rates, staple cereal prices and relative purchasing power

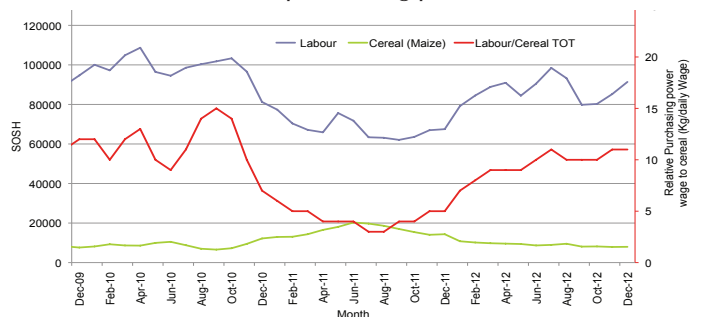


Figure 11: Exchange Rate

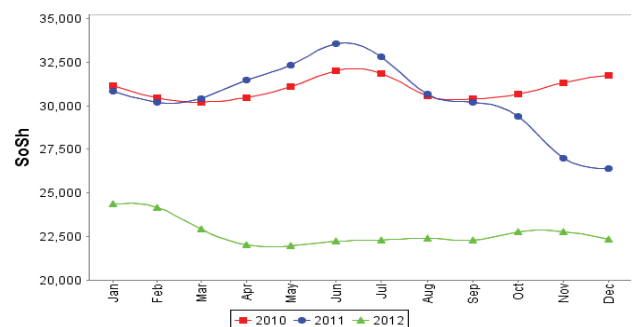
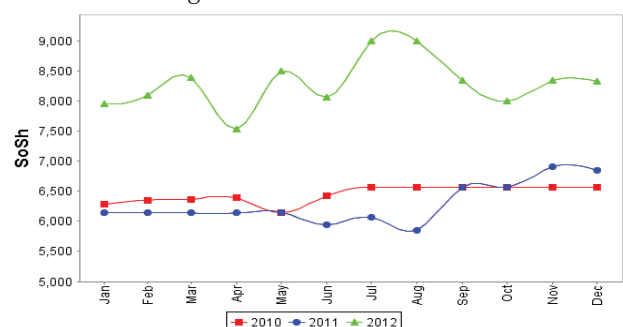


Figure 13: Firewood Bundle



Regional analysis: Sorghum Belt Regions (Bay, Bakool, Gedo and Hiran)

Indicator	5-Year Average (2003-07)	Dec-11	Nov-12	Dec-12 Nominal Price	Dec-12 Real (Deflated) Price	% Change Same Month Previous Year	% Change Previous Month	% Change 5-year avrg (2003-07)
Imported Commodities Prices								
Diesel 1 litre	13,003	38,477	32,500	31,327	15,204	-19%	-4%	141%
Imported Red Rice 1kg	9,490	24,518	20,341	20,164	9,750	-18%	-1%	112%
Petrol 1 litre	15,224	38,364	31,932	31,145	15,115	-19%	-2%	105%
Sugar	9,540	32,727	23,477	22,400	10,843	-32%	-5%	135%
Vegetable Oil 1 litre	20,208	51,159	47,318	45,564	22,159	-11%	-4%	125%
Wheat Flour 1kg	9,311	21,182	19,273	18,345	8,862	-13%	-5%	97%
Wheat Grain 1kg	4,991	9,708	8,650	9,160	4,375	-6%	6%	84%
Cereal Prices								
Red Sorghum 1kg	2,368	9,764	7,461	7,125	3,381	-27%	-5%	201%
White Maize 1kg	3,060	9,939	8,488	7,822	3,721	-21%	-8%	156%
Livestock & Livestock Product Prices								
Camel Local Quality (Head)	3,407,320	10,355,556	14,219,500	14,015,000	6,846,495	35%	-1%	311%
Cattle Local Quality (Head)	1,528,850	2,994,643	4,436,667	4,408,750	2,153,659	47%	-1%	188%
Fresh Camel Milk 1 litre	6,378	19,364	25,886	23,545	11,402	22%	-9%	269%
Goat Export Quality (Head)	455,107	1,525,000	1,900,705	1,822,727	890,337	20%	-4%	301%
Goat Local Quality (Head)	287,652	997,614	1,361,955	1,232,382	601,942	24%	-10%	328%
Other Essential Items								
Charcoal 50kg	41,620	143,977	163,227	154,545	75,398	7%	-5%	271%
Cowpeas 1 kg	6,379	34,109	21,359	20,400	9,866	-40%	-4%	220%
Unskilled Labor Wage Rate	20,052	127,841	107,500	109,673	53,477	-14%	2%	447%
Firewood Bundle	1,792	5,159	6,932	6,600	3,124	28%	-5%	268%
Local Sesame Oil 1 litre	25,937	80,083	73,250	68,286	33,259	-15%	-7%	163%
Exchange Rate (Somali Shilling per USD)	16,408	24,361	22,379	22,366	10,826	-8%	0%	36%
Construction Materials*								
Cement 50kg	-	362,000	324,600	327,130	159,709	-10%	1%	-
Cooking Pot Aluminium 7 Litre	-	272,250	310,682	303,055	147,948	11%	-2%	-
Galvanised Iron Sheet Ga 26	-	202,273	177,000	170,100	82,997	-16%	-4%	-
Hollow Concrete Block 10cm x 20cm x 40cm	-	12,875	11,750	16,040	7,736	25%	37%	-
Non Collapsible Jerrycan 10 Litre	-	51,545	56,833	55,556	27,040	8%	-2%	-
Plastic Tarpaulin 14m x 5 m	-	264,250	338,611	323,333	157,854	22%	-5%	-
Roofing Nails 15Kg	-	797,955	717,750	733,200	358,082	-8%	2%	-
Timber 2in x 4in x 20ft	-	283,438	301,594	283,440	138,366	0%	-6%	-
Woven Dry Raised Blanket 150cm x 200cm	-	85,214	91,071	90,714	44,216	6%	0%	-
Terms of Trade								
Labour Wage (Daily)/ Cereal (Sorghum(Kg))	8	13	14	15	-	18%	7%	82%
Local Goat (Head)/ Cereal (Sorghum(Kg))	121	102	183	173	-	69%	-5%	42%
Price Indices								
Consumer Price Index	-	256	208	205	-	-20%	-2%	-
Purchasing Power Index	-	0.39	0.48	0.49	-	25%	2%	-

Figure 14: Imported commodity prices compared to exchange rates

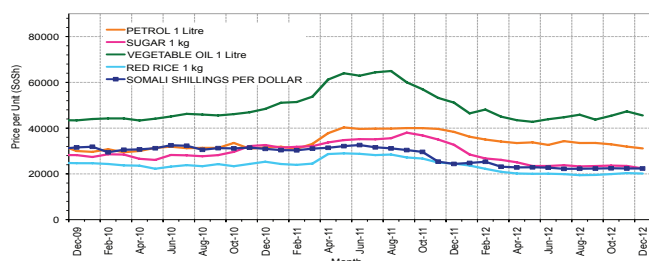


Figure 15: Trends in wage rates, staple cereal prices and relative purchasing power

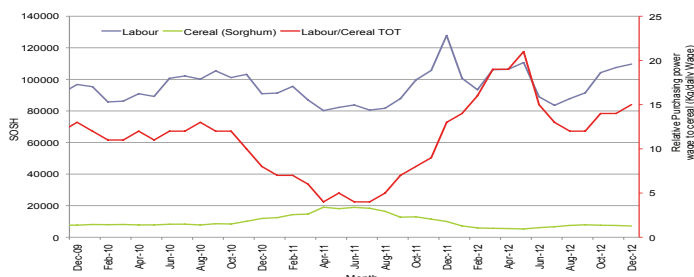


Figure 16: Goat Local Quality

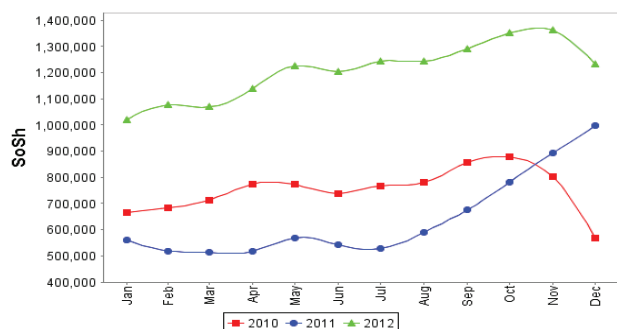


Figure 17: Exchange Rate

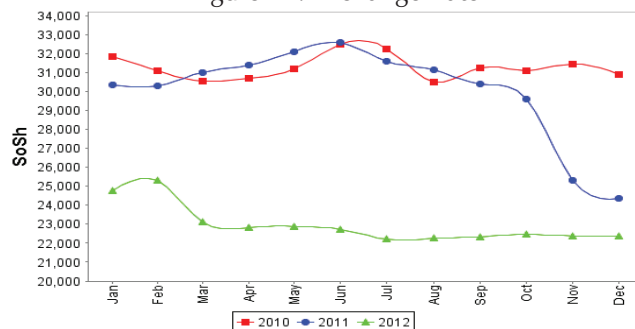


Figure 18: Water Drum

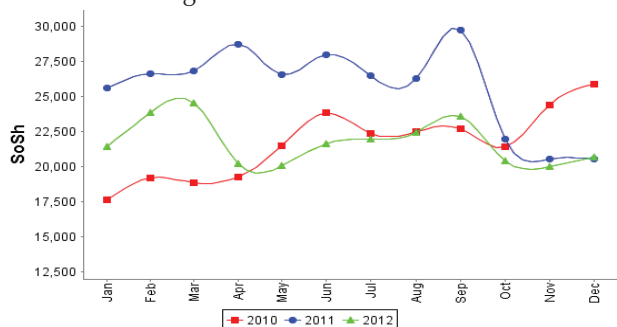
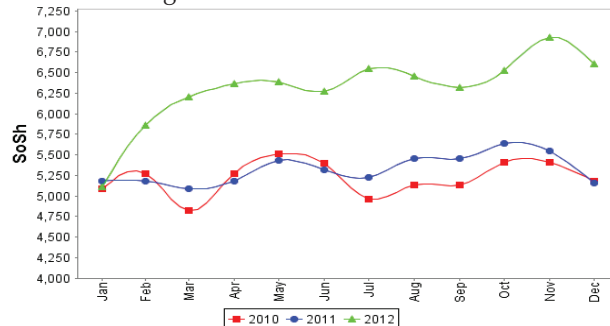


Figure 19: Firewood Bundle



Regional analysis: Shabelle Regions

Indicator	5-Year Average (2003-07)	Dec-11	Nov-12	Dec-12 Nominal Price	Dec-12 Real (Deflated) Price	% Change Same Month Previous Year	% Change Previous Month	% Change 5-year avg (2003-07)
Imported Commodities Prices								
Diesel 1 litre	11,276	32,417	29,250	28,667	13,904	-12%	-2%	154%
Imported Red Rice 1kg	7,334	22,083	16,625	16,900	8,156	-23%	2%	130%
Petrol 1 litre	12,660	34,625	30,083	29,300	14,214	-15%	-3%	131%
Sugar	7,586	24,417	21,583	21,167	10,240	-13%	-2%	179%
Vegetable Oil 1 litre	15,885	42,083	33,292	33,167	16,103	-21%	0%	109%
Wheat Flour 1kg	8,803	16,550	18,042	17,667	8,531	7%	-2%	101%
Wheat Grain 1kg	2,667	12,000	6,667	6,933	3,287	-42%	4%	160%
Cereal Prices								
Red Sorghum 1kg	2,713	14,055	8,872	9,692	4,635	-31%	9%	257%
White Maize 1kg	2,600	7,155	5,067	4,936	2,311	-31%	-3%	90%
Livestock & Livestock Product Prices								
Camel Local Quality (Head)	4,595,063	14,577,500	17,235,000	16,608,000	8,113,225	14%	-4%	261%
Cattle Local Quality (Head)	1,434,761	4,232,500	5,950,000	6,384,000	3,118,606	51%	7%	345%
Fresh Camel Milk 1 litre	5,049	17,958	21,875	17,067	8,238	-5%	-22%	238%
Goat Export Quality (Head)	546,554	1,736,250	2,188,750	1,894,500	925,399	9%	-13%	247%
Goat Local Quality (Head)	370,463	1,182,500	1,465,417	1,368,667	668,520	16%	-7%	269%
Other Essential Items								
Charcoal 50kg	46,054	130,694	128,820	134,556	65,633	3%	4%	192%
Cowpeas 1 kg	5,944	26,086	22,627	17,262	8,333	-34%	-24%	190%
Unskilled Labor Wage Rate	21,213	64,792	72,083	67,167	32,712	4%	-7%	217%
Firewood Bundle	2,353	5,625	6,958	6,167	2,913	10%	-11%	162%
Local Sesame Oil 1 litre	23,657	60,667	59,000	57,967	28,218	-4%	-2%	145%
Exchange Rate (Somali Shilling per USD)	16,992	25,192	22,929	23,133	11,201	-8%	1%	36%
Construction Materials*								
Cement 50kg	-	236,000	214,250	206,000	100,535	-13%	-4%	-
Cooking Pot Aluminium 7 Litre	-	700,000	800,000	785,000	383,387	12%	-2%	-
Galvanised Iron Sheet Ga.26	-	103,100	79,850	102,000	49,729	-1%	28%	-
Hollow Concrete Block 10cm x 20cm x 40cm	-	12,500	12,500	12,250	5,884	2%	-2%	-
Non Collapsible Jerrycan 10 Litre	-	44,563	44,063	52,150	25,376	17%	18%	-
Plastic Tarpaulin 14m x 5 m	-	289,583	221,333	179,000	87,345	-38%	-19%	-
Roofing Nails 15Kg	-	597,000	582,750	564,000	275,425	-6%	-3%	-
Timber 2in x 4in x 20ft	-	49,250	47,500	46,760	22,743	-5%	-2%	-
Woven Dry Raised Blanket 150cm x 200cm	-	55,500	71,750	70,067	34,129	26%	-2%	-
Terms of Trade								
Labour Wage (Daily)/ Cereal (Maize(Kg))	8	9	14	14	-	50%	-4%	67%
Local Goat (Head)/ Cereal (Maize(Kg))	142	165	289	277	-	68%	-4%	95%
Price Indices								
Consumer Price Index	-	256	208	205	-	-20%	-2%	-
Purchasing Power Index	-	0.39	0.48	0.49	-	25%	2%	-

Figure 20: Imported commodity prices compared to exchange rates

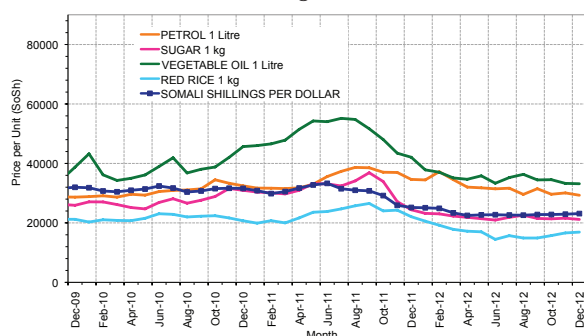


Figure 22: Goat Local Quality

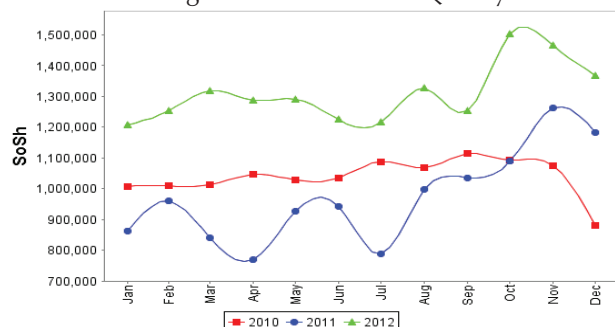


Figure 24: Water Drum

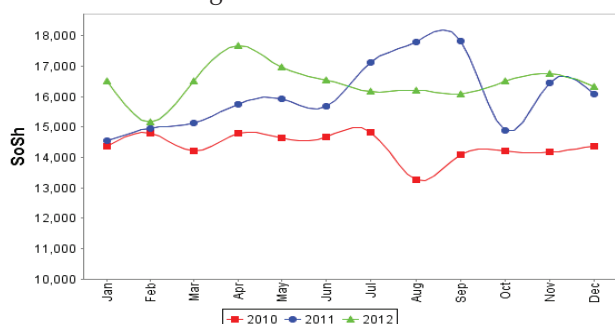


Figure 21: Trends in wage rates, staple cereal prices and relative purchasing power

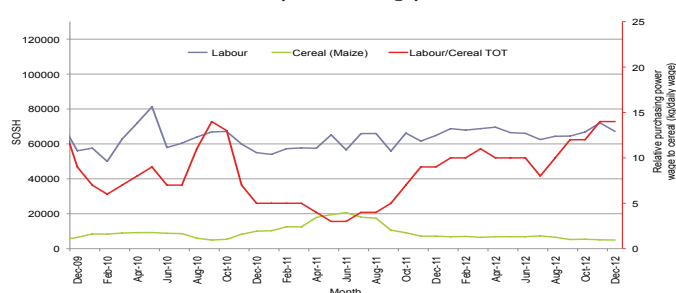


Figure 23: Exchange Rate

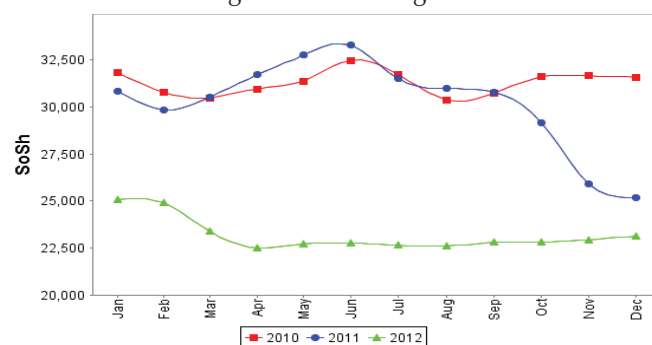
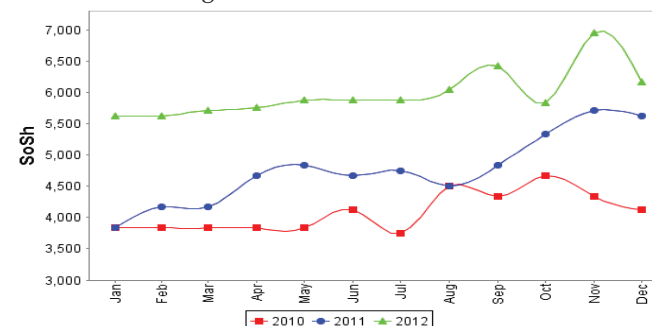


Figure 25: Firewood Bundle



Regional analysis: Banadir Region

Indicator	5-Year Average (2003-07)	Dec-11	Nov-12	Dec-12 Nominal Price	Dec-12 Real (Deflated) Price	% Change Same Month Previous Year	% Change Previous Month	% Change 5-year avrg (2003-07)
Imported Commodities Prices								
Diesel 1 litre	10,390	29,458	23,833	23,833	11,543	-19%	0%	129%
Imported Red Rice 1kg	7,275	19,729	14,083	13,917	6,699	-29%	-1%	91%
Petrol 1 litre	11,650	30,667	24,542	24,067	11,657	-22%	-2%	107%
Sugar	7,291	21,475	17,854	17,393	8,397	-19%	-3%	139%
Vegetable Oil 1 litre	12,916	41,000	32,250	32,867	15,956	-20%	2%	154%
Wheat Flour 1kg	7,541	14,229	14,167	13,583	6,536	-5%	-4%	80%
Wheat Grain 1kg	4,000	11,375	8,733	8,260	3,935	-27%	-5%	107%
Cereal Prices								
Red Sorghum 1kg	2,165	9,775	5,275	4,980	2,333	-49%	-6%	130%
White Maize 1kg	2,835	8,652	7,239	6,405	3,029	-26%	-12%	126%
Livestock & Livestock Product Prices								
Camel Local Quality (Head)	6,400,000	13,000,000	-	-	-	-	-	-
Cattle Local Quality (Head)	3,266,666	3,000,000	-	-	-	-	-	-
Fresh Camel Milk 1 litre	4,650	20,396	20,208	20,067	9,703	-2%	-1%	332%
Goat Export Quality (Head)	-	1,800,000	2,600,000	2,640,000	1,289,590	47%	2%	-
Goat Local Quality (Head)	650,000	1,518,750	2,131,250	2,297,000	1,122,028	51%	8%	253%
Other Essential Items								
Charcoal 50kg	102,000	191,458	190,542	194,533	94,933	2%	2%	91%
Cowpeas 1 kg	5,410	28,507	19,688	18,597	8,985	-35%	-6%	244%
Unskilled Labor Wage Rate	61,875	104,250	110,000	112,333	54,777	8%	2%	82%
Firewood Bundle	43,350	7,667	7,800	7,896	3,757	3%	1%	-82%
Local Sesame Oil 1 litre	23,450	62,542	60,625	61,400	29,895	-2%	1%	162%
Exchange Rate (Somali Shilling per USD)	17,053	25,185	22,471	22,437	10,861	-11%	0%	32%
Construction Materials*								
Cement 50kg	-	190,873	164,225	166,263	81,123	-13%	1%	-
Cooking Pot Aluminium 7 Litre	-	322,063	272,222	266,600	130,139	-17%	-2%	-
Galvanised Iron Sheet Ga 26	-	98,647	82,675	83,567	40,724	-15%	1%	-
Hollow Concrete Block 10cm x 20cm x 40cm	-	10,250	10,708	10,867	5,209	6%	1%	-
Non Collapsible Jerrycan 10 Litre	-	39,833	39,056	41,867	20,353	5%	7%	-
Plastic Tarpaulin 14m x 5 m	-	237,500	245,833	225,000	109,817	-5%	-8%	-
Roofing Nails 15Kg	-	524,755	464,958	475,783	232,329	-9%	2%	-
Timber 2in x 4in x 20ft	-	135,775	121,542	116,567	56,845	-14%	-4%	-
Woven Dry Raised Blanket 150cm x 200cm	-	82,500	109,583	108,333	52,823	31%	-1%	-
Terms of Trade								
Labour Wage (Daily)/ Cereal (Maize(Kg))	22	12	15	18	-	46%	15%	-20%
Local Goat (Head)/ Cereal (Maize(Kg))	229	176	294	359	-	104%	22%	56%
Price Indices								
Consumer Price Index	-	256	208	205	-	-20%	-2%	-
Purchasing Power Index	-	0.39	0.48	0.49	-	25%	2%	-

Figure 26: Bakara: Imported Commodity Prices compared to Exchange Rate

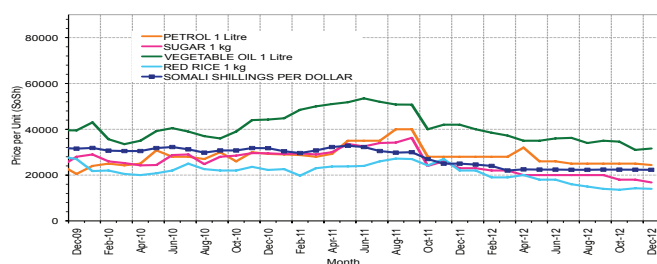


Figure 28: Goat Local Quality

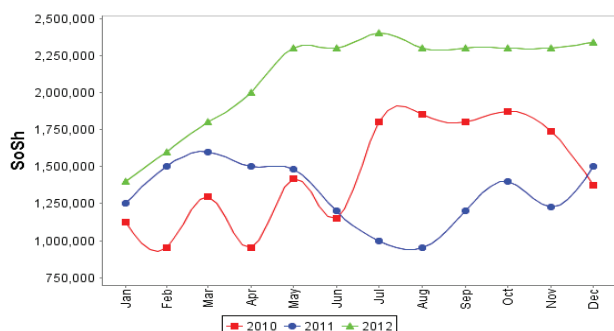


Figure 30: Wheat Flour

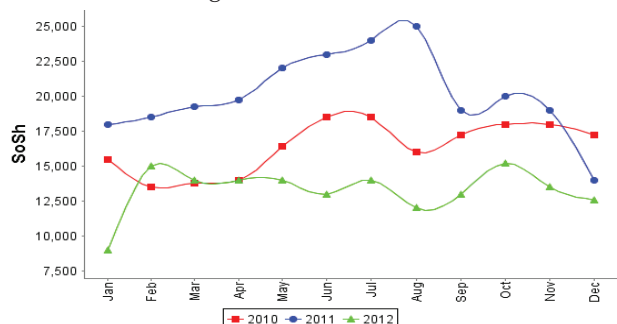


Figure 27: Bakara: Trends in Wage Rates, Staple Cereal Prices and Relative Purchasing Power

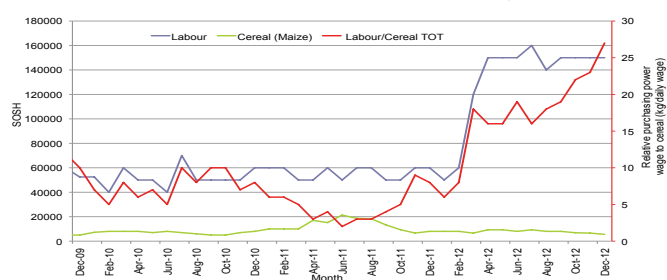


Figure 29: Exchange Rate

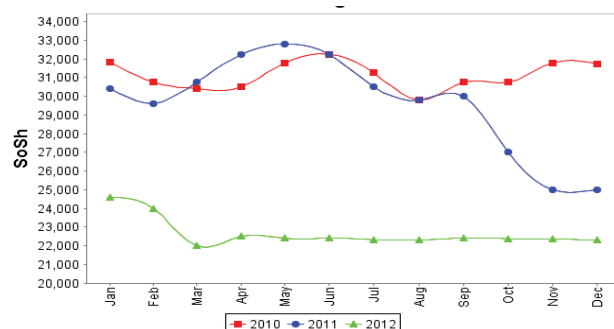
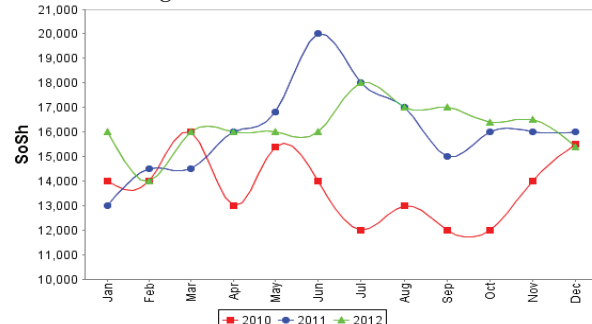


Figure 31: Fresh Camel Milk



Regional analysis: Central Regions

Indicator	5-Year Average (2003-07)	Dec-11	Nov-12	Dec-12 Nominal Price	Dec-12 Real (Deflated) Price	% Change Same Month Previous Year	% Change Previous Month	% Change 5-year avrg (2003-07)
Imported Commodities Prices								
Diesel 1 litre	11,658	36,280	29,400	28,900	15,272	-20%	-2%	148%
Imported Red Rice 1kg	8,863	28,260	20,550	20,000	10,538	-29%	-3%	126%
Petrol 1 litre	12,106	31,890	25,800	26,120	13,794	-18%	1%	116%
Sugar	9,193	32,070	22,950	22,560	11,900	-30%	-2%	145%
Vegetable Oil 1 litre	19,293	54,840	44,900	44,200	23,411	-19%	-2%	129%
Wheat Flour 1kg	8,973	21,680	17,100	16,680	8,772	-23%	-2%	86%
Wheat Grain 1kg	7,000	19,125	14,667	13,600	7,134	-29%	-7%	94%
Cereal Prices								
Red Sorghum 1kg	5,012	14,050	10,850	10,440	5,453	-26%	-4%	108%
White Maize 1kg	5,140	16,260	11,375	9,750	5,086	-40%	-14%	90%
Livestock & Livestock Product Prices								
Camel Local Quality (Head)	2,523,688	8,075,000	10,625,000	10,500,000	5,585,006	30%	-1%	316%
Cattle Local Quality (Head)	1,689,895	2,400,000	-	-	-	-	-	-
Fresh Camel Milk 1 litre	11,285	32,180	25,900	28,760	15,198	-11%	11%	155%
Goat Export Quality (Head)	437,772	1,433,333	1,495,000	1,468,000	780,751	2%	-2%	235%
Goat Local Quality (Head)	328,730	1,048,300	1,314,000	1,156,400	615,006	10%	-12%	252%
Other Essential Items								
Charcoal 50kg	59,483	186,600	193,500	189,400	100,645	2%	-2%	218%
Cowpeas 1 kg	7,424	49,620	25,900	20,760	10,943	-58%	-20%	180%
Unskilled Labor Wage Rate	31,175	90,000	86,000	83,600	44,368	-7%	-3%	168%
Firewood Bundle	4,480	36,000	39,000	38,400	20,326	7%	-2%	757%
Local Sesame Oil 1 litre	31,174	91,750	87,250	88,200	46,815	-4%	1%	183%
Exchange Rate (Somali Shilling per USD)	16,652	27,030	22,405	22,356	11,791	-17%	0%	34%
Construction Materials*								
Cement 50kg	-	335,340	289,300	281,368	149,564	-16%	-3%	-
Cooking Pot Aluminium 7 Litre	-	401,200	369,500	385,600	205,006	-4%	4%	-
Galvanised Iron Sheet Ga 26	-	154,910	115,350	107,680	57,177	-30%	-7%	-
Hollow Concrete Block 10cm x 20cm x 40cm	-	16,750	14,563	14,350	7,533	-14%	-1%	-
Non Collapsible Jerrycan 10 Litre	-	52,200	48,000	50,400	26,709	-3%	5%	-
Plastic Tarpaulin 14m x 5 m	-	324,400	301,000	292,400	155,432	-10%	-3%	-
Roofing Nails 15Kg	-	814,000	672,750	665,100	353,677	-18%	-1%	-
Timber 2in x 4in x 20ft	-	146,400	109,375	106,500	56,549	-27%	-3%	-
Woven Dry Raised Blanket 150cm x 200cm	-	134,000	132,000	131,200	69,687	-2%	-1%	-
Terms of Trade								
Labour Wage (Daily)/ Cereal (Rice(Kg))	4	3	4	4	-	31%	0%	19%
Local Goat (Head)/ Cereal (Rice(Kg))	37	37	64	58	-	56%	-10%	56%
Camel (Head)/Cereal (Kg)	285	286	517	525	-	84%	2%	84%
Price Indices								
Consumer Price Index	-	237	195	188	-	-21%	-4%	-

Figure 32: Imported commodity prices compared to exchange rates

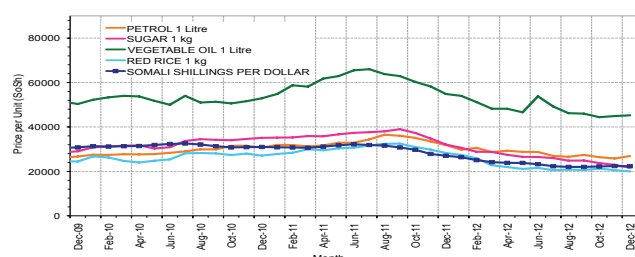


Figure 34: Goat Local Quality

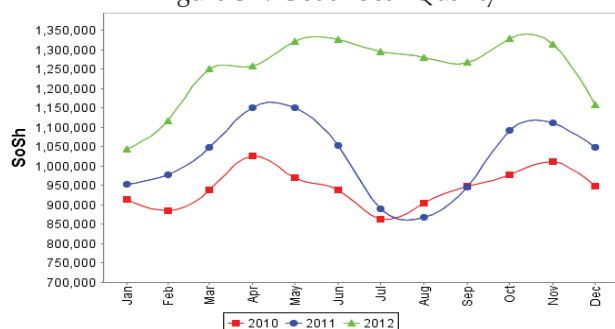


Figure 36: Water Drum

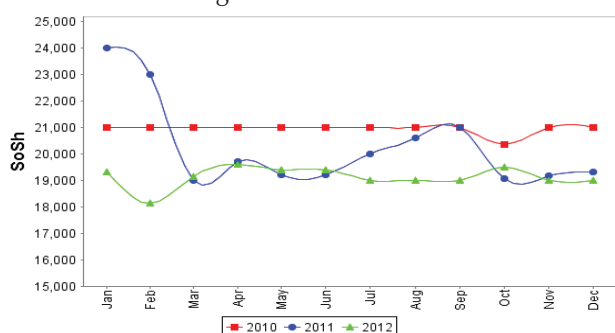


Figure 33: Trends in wage rates, staple cereal prices and relative purchasing power

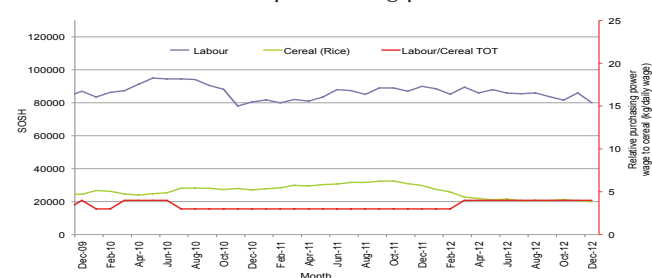


Figure 35: Exchange Rate

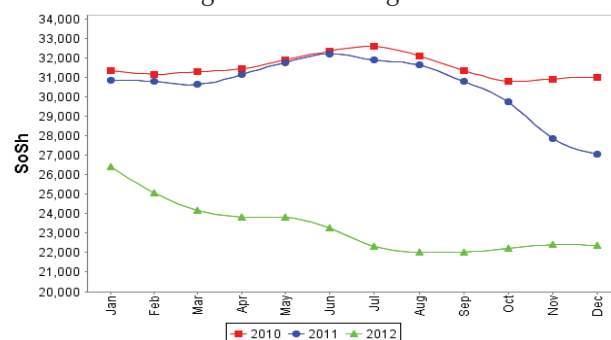
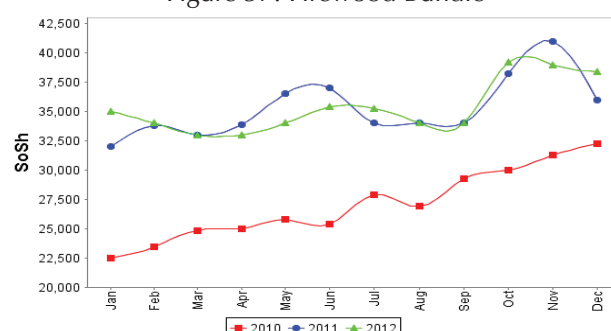


Figure 37: Firewood Bundle



Regional analysis: Northeast Regions

Indicator	5-Year Average (2003-07)	Dec-11	Nov-12	Dec-12 Nominal Price	Dec-12 Real (Deflated) Price	% Change Same Month Previous Year	% Change Previous Month	% Change 5-year avrg (2003-07)
Imported Commodities Prices								
Diesel 1 litre	9,952	31,625	23,875	23,950	10,661	-24%	0%	141%
Imported Red Rice 1kg	7,575	22,750	17,625	16,950	7,516	-25%	-4%	124%
Petrol 1 litre	10,704	28,313	21,938	21,700	9,650	-23%	-1%	103%
Sugar	8,543	29,625	21,438	20,500	9,111	-31%	-4%	140%
Vegetable Oil 1 litre	18,131	52,250	37,750	36,450	16,277	-30%	-3%	101%
Wheat Flour 1kg	8,047	20,438	16,625	15,700	6,954	-23%	-6%	95%
Wheat Grain 1kg	7,625	26,875	27,375	25,400	11,312	-5%	-7%	233%
Cereal Prices								
Red Sorghum 1kg	7,275	28,000	19,417	18,933	8,407	-32%	-2%	160%
White Maize 1kg	6,922	17,500	17,500	16,800	7,448	-4%	-4%	143%
Livestock & Livestock Product Prices								
Camel Local Quality (Head)	4,013,194	14,546,875	15,750,000	14,957,500	6,720,466	3%	-5%	273%
Cattle Local Quality (Head)	2,046,666	8,000,000	8,125,000	7,900,000	3,549,455	-1%	-	286%
Fresh Camel Milk 1 litre	14,218	35,875	35,125	38,200	17,064	6%	9%	169%
Goat Export Quality (Head)	475,590	1,393,750	1,485,000	1,395,000	626,689	0%	-6%	193%
Goat Local Quality (Head)	434,965	1,346,875	1,287,500	1,336,500	600,404	-1%	4%	207%
Other Essential Items								
Charcoal 50kg	92,764	414,375	373,125	378,450	169,942	-9%	1%	308%
Cowpeas 1 kg	10,839	64,500	35,667	33,800	15,087	-48%	-5%	212%
Unskilled Labor Wage Rate	44,916	106,813	125,000	123,250	55,278	15%	-1%	174%
Firewood Bundle	7,633	41,250	45,625	48,000	21,467	16%	5%	529%
Local Sesame Oil 1 litre	33,719	96,563	86,563	86,500	38,765	-10%	0%	157%
Exchange Rate (Somali Shilling per USD)	16,736	27,469	21,663	21,675	9,639	-21%	0%	30%
Construction Materials*								
Cement 50kg	-	231,125	188,344	186,700	83,786	-19%	-1%	-
Cooking Pot Aluminium 7 Litre	-	459,375	418,125	397,250	178,389	-14%	-5%	-
Galvanised Iron Sheet Ga 26	-	221,313	180,500	180,450	80,978	-18%	0%	-
Hollow Concrete Block 10cm x 20cm x 40cm	-	12,375	11,750	11,900	5,247	-4%	1%	-
Non Collapsible Jerrycan 10 Litre	-	40,000	39,563	38,750	17,311	-3%	-2%	-
Plastic Tarpaulin 14m x 5 m	-	179,375	173,688	174,750	78,417	-3%	1%	-
Roofing Nails 15Kg	-	551,333	606,188	606,000	272,182	10%	0%	-
Timber 2in x 4in x 20ft	-	215,750	171,938	176,250	79,091	-18%	3%	-
Woven Dry Raised Blanket 150cm x 200cm	-	264,688	233,750	247,000	110,880	-7%	6%	-
Terms of Trade								
Labour Wage (Daily)/ Cereal (Rice(Kg))	6	5	7	7	-	55%	3%	23%
Local Goat (Head)/ Cereal (Rice(Kg))	57	59	73	79	-	33%	8%	37%
Price Indices								
Consumer Price Index	-	253	218	223	-	-12%	2%	-
Purchasing Power Index	-	0.40	0.46	0.45	-	14%	-2%	-

Figure 38: Imported commodity prices compared to exchange rates

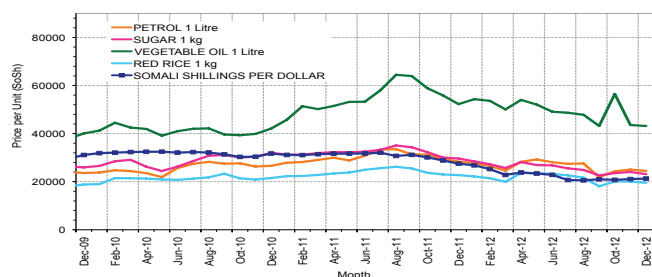


Figure 39: Trends in wage rates, staple cereal prices and relative purchasing power

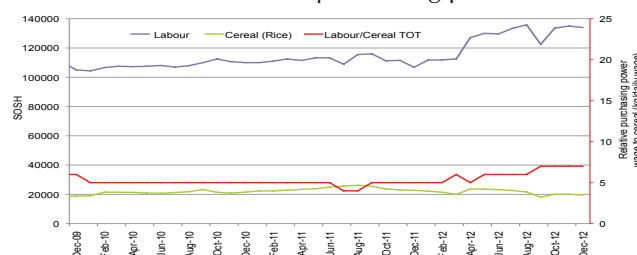


Figure 40: Goat Local Quality

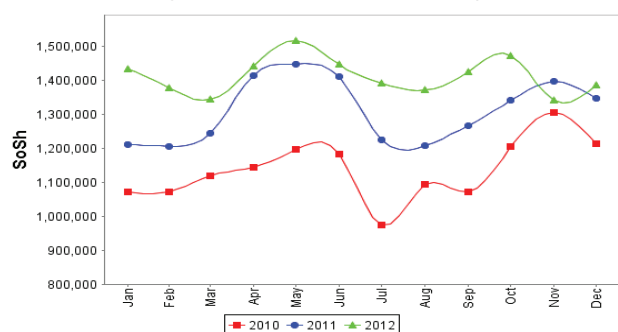


Figure 41: Exchange Rate

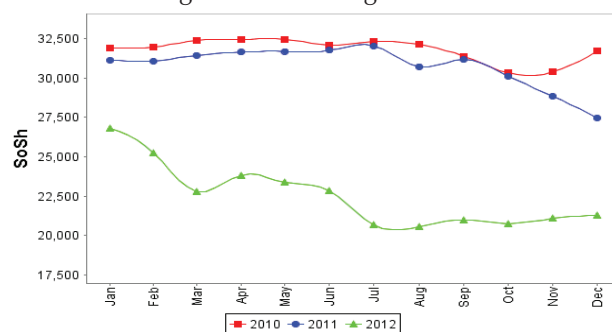


Figure 42: Water Drum

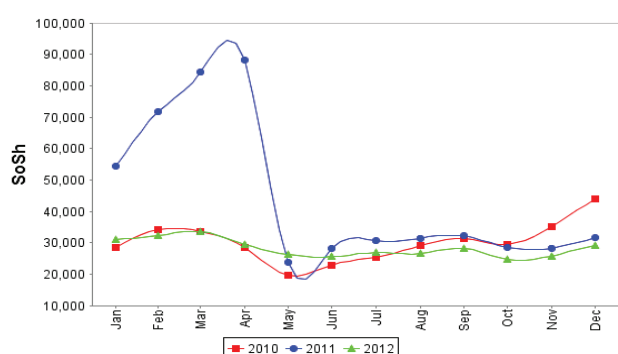
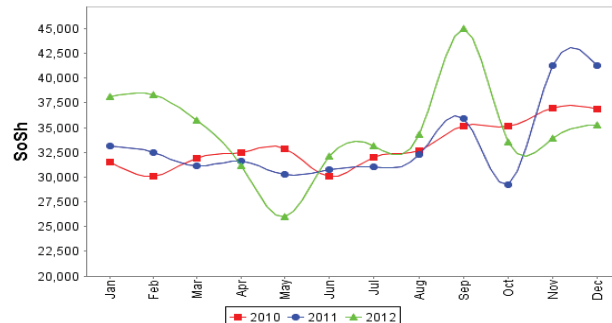


Figure 43: Firewood Bundle



Regional analysis: Northwest Regions

Indicator	5-Year Average (2003-07)	Dec-11	Nov-12	Dec-12 Nominal Price	Dec-12 Real (Deflated) Price	% Change Same Month Previous Year	% Change Previous Month	% Change 5-year avrg (2003-07)
Imported Commodities Prices								
Diesel 1 litre	3,801	5,288	6,937	6,930	5,353	31%	0%	82%
Imported Red Rice 1kg	3,081	5,400	4,972	5,080	3,897	-6%	2%	65%
Petrol 1 litre	4,385	5,477	7,294	7,500	5,802	37%	3%	71%
Sugar	3,251	6,420	6,045	5,890	4,535	-8%	-3%	81%
Vegetable Oil 1 litre	7,195	11,171	12,695	13,020	10,145	17%	3%	81%
Wheat Flour 1kg	3,104	4,430	4,442	4,400	3,362	-1%	-1%	42%
Wheat Grain 1kg	1,982	3,125	2,906	3,113	2,350	0%	7%	57%
Cereal Prices								
White Sorghum 1kg	1,975	3,623	3,330	3,589	2,724	-1%	8%	82%
Yellow Maize 1kg	1,818	3,705	3,381	3,356	2,541	-9%	-1%	85%
Livestock & Livestock Product Prices								
Camel Local Quality (Head)	1,601,208	2,310,000	2,711,000	2,602,267	2,047,547	13%	-4%	63%
Cattle Local Quality (Head)	919,333	1,503,333	1,754,500	1,825,867	1,436,620	21%	4%	99%
Fresh Camel Milk 1 litre	4,585	5,150	5,400	5,600	4,306	9%	4%	22%
Goat Export Quality (Head)	184,052	312,275	443,150	479,380	377,110	54%	8%	160%
Goat Local Quality (Head)	153,016	230,163	299,325	344,270	270,796	50%	15%	125%
Other Essential Items								
Charcoal 50kg	21,934	36,675	45,385	50,980	40,015	39%	12%	132%
Cowpeas 1 kg	4,799	10,031	9,594	9,594	7,449	-4%	-4%	100%
Unskilled Labor Wage Rate	25,897	33,026	37,705	42,700	33,499	29%	13%	65%
Firewood Bundle	4,450	2,833	3,033	3,317	2,510	17%	9%	-25%
Local Sesame Oil 1 litre	16,843	25,000	25,894	26,500	20,752	6%	2%	57%
Exchange Rate (Somaliland Shilling per USD)	6,319	5,780	6,460	6,635	5,121	15%	3%	5%
Construction Materials*								
Cement 50kg	-	45,051	53,276	53,480	41,982	19%	0%	-
Cooking Pot Aluminium 7 Litre	-	107,964	85,525	87,940	69,097	-19%	3%	-
Galvanised Iron Sheet Ga 26	-	44,000	51,413	52,125	40,916	18%	1%	-
Hollow Concrete Block 10cm x 20cm x 40cm	-	2,700	3,254	3,385	2,564	25%	4%	-
Non Collapsible Jerrycan 10 Litre	-	6,000	7,120	7,200	5,565	20%	1%	-
Plastic Tarpaulin 14m x 5 m	-	73,712	94,025	98,350	77,289	33%	5%	-
Roofing Nails 15Kg	-	158,941	161,194	166,098	130,598	5%	3%	-
Timber 2in x 4in x 20ft	-	101,196	129,590	129,313	101,653	28%	0%	-
Woven Dry Raised Blanket 150cm x 200cm	-	88,234	78,375	81,215	63,806	-8%	4%	-
Terms of Trade								
Labour Wage (Daily)/ Cereal (Rice(Kg))	8	6	8	8	-	37%	11%	0%
Local Goat (Head)/ Cereal (Rice(Kg))	50	43	60	68	-	59%	13%	36%
Price Indices								
Consumer Price Index	-	120	126	127	-	6%	0%	-
Purchasing Power Index	-	0.84	0.79	0.79	-	-6%	0%	-

Figure 44: Imported commodity prices compared to exchange rates

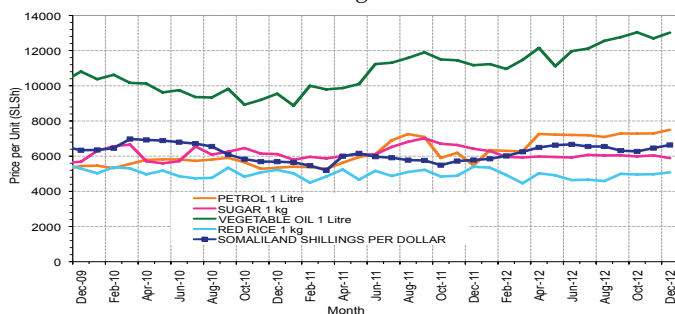


Figure 46: Goat Local Quality

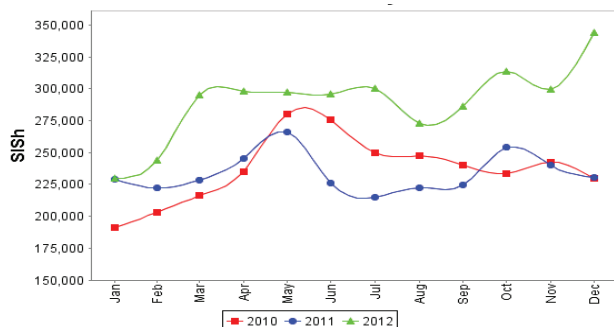


Figure 48: Water Drum

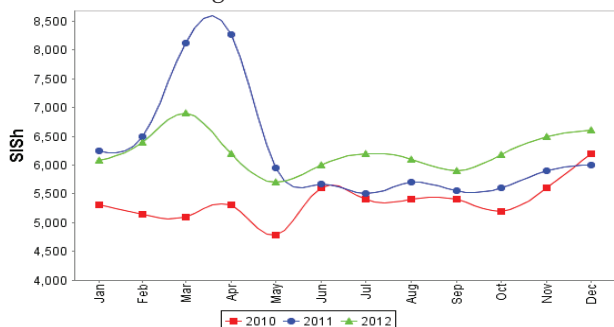


Figure 45: Trends in wage rates, staple cereal prices and relative purchasing power

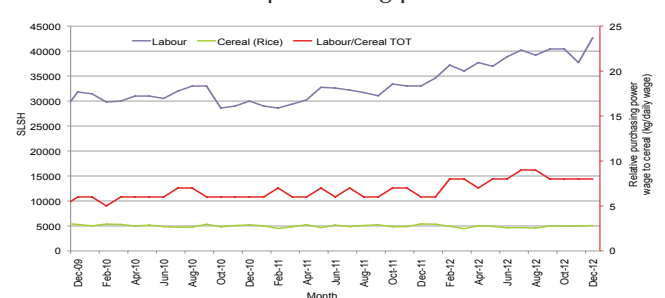


Figure 47: Exchange Rate

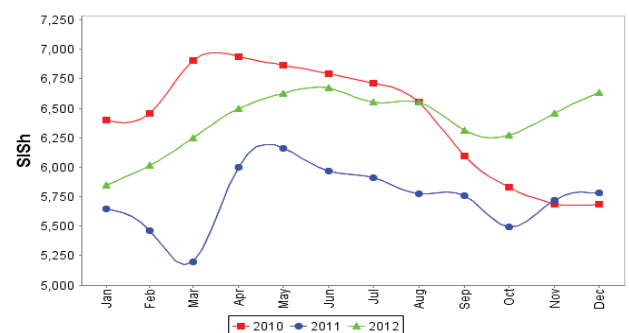
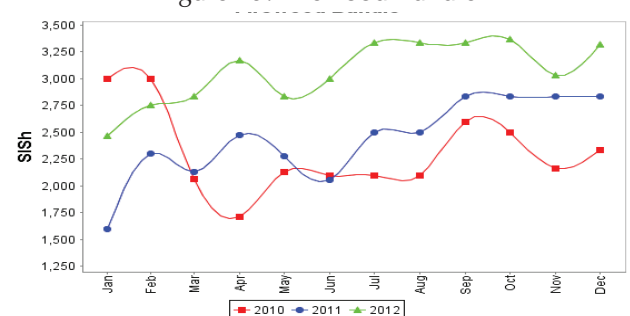


Figure 49: Firewood Bundle



Trends in Livestock Exports

Table 2: Berbera Livestock Exports (Number of Heads)

	1994	1995	1996	1997	1998	1999	2000	2001	2002	2003	2004	2005	2006	2007	2008	2009	2010	2011	2012
Shoats	1,572,656	2,683,597	2,376,646	2,814,495	957,224	2,048,136	1,601,083	51,546	341,711	563,107	859,404	1,023,795	1,017,242	1,350,054	1,219,519	1,556,003	2,584,810	3,104,684	3,219,584
Cattle	173,400	167,128	65,127	66,939	92,213	89,967	63,263	20,973	37,547	84,312	131,852	148,151	85,631	88,143	80,051	88,005	133,021	150,934	190,354
Camel	38,553	21,993	42,801	50,587	11,663	37,430	16,984	3,473	18,864	21,874	5,147	5,069	22,810	14,245	26,515	20,206	92,651	107,281	102,664

Figure 50: Berbera Livestock Exports (Number of Heads)

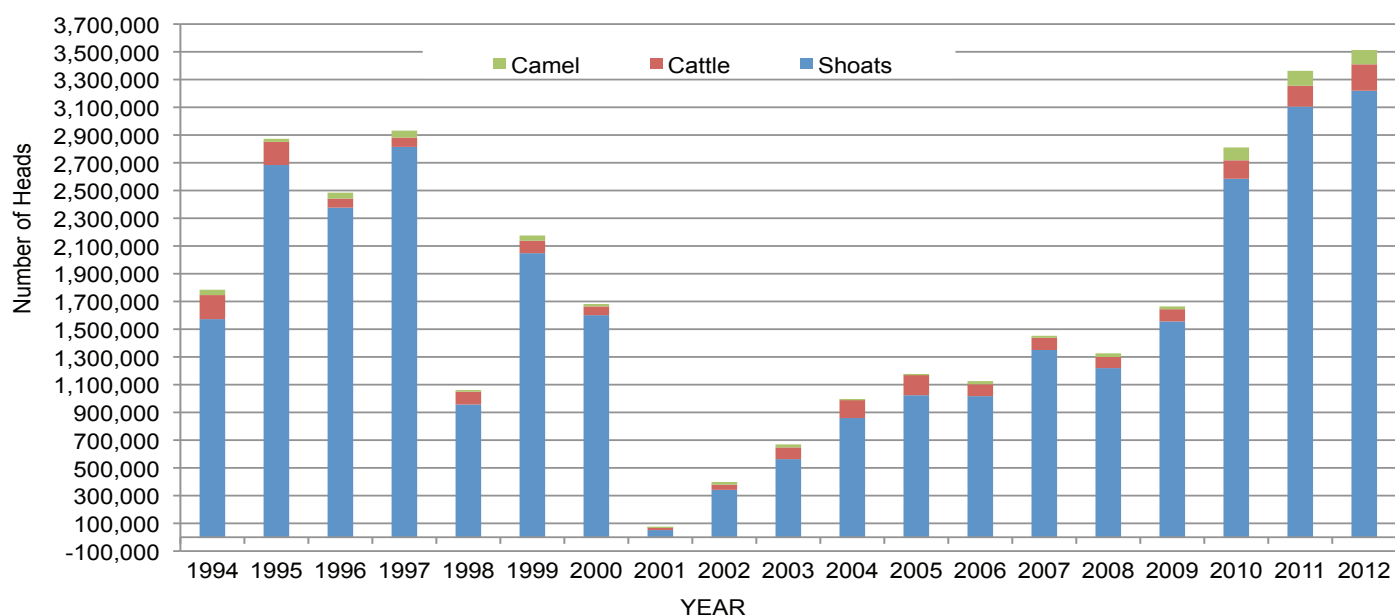
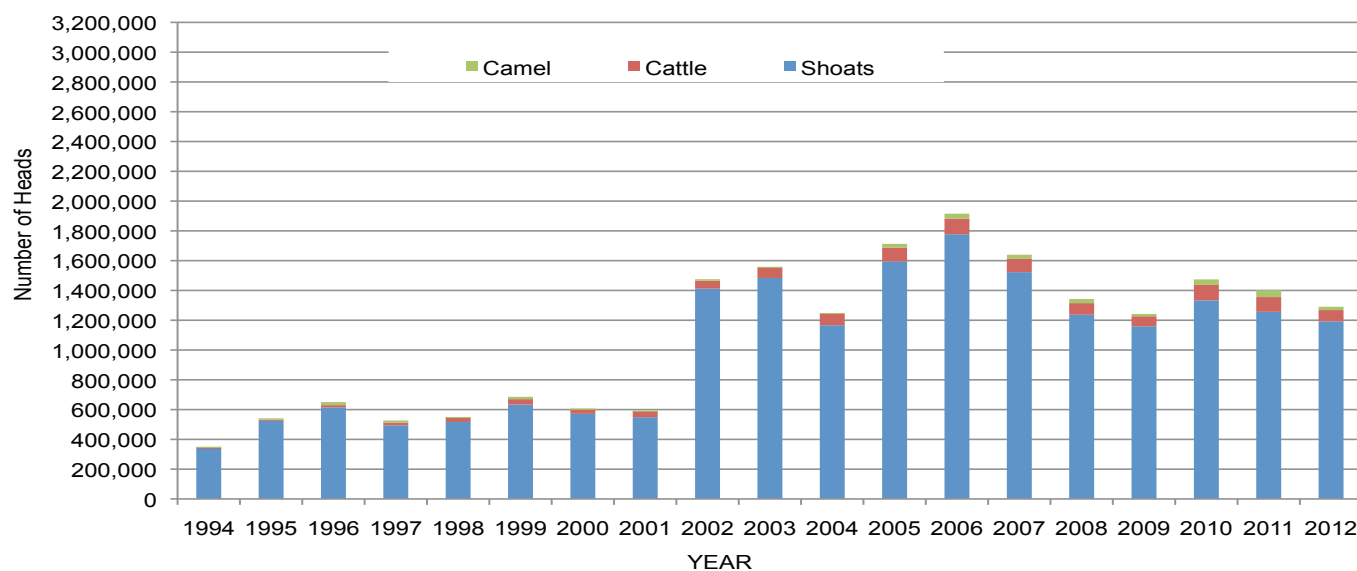


Table 3: Bossaso Livestock Exports (Number of Heads)

	1994	1995	1996	1997	1998	1999	2000	2001	2002	2003	2004	2005	2006	2007	2008	2009	2010	2011	2012
Shoats	344,000	524,346	614,407	494,320	517,020	633,669	571,455	548,853	1,412,450	1,483,409	1,166,480	1,594,859	1,777,283	1,522,855	1,236,775	1,159,454	1,333,478	1,256,535	1,192,197
Cattle	1,450	8,795	15,335	17,831	29,492	36,586	27,604	42,248	53,313	71,328	79,994	91,910	104,595	89,190	78,046	67,385	103,808	99,058	76,043
Camel	5,397	8,392	20,462	14,599	3,938	15,544	8,177	1,950	9,720	4,259	2,488	26,109	33,724	27,580	27,639	15,331	36,865	45,878	22,288

Figure 51: Bossaso Livestock Exports (Number of Heads)



Trends in Cereal Imports

Table 4: Total Cereal Imports (Berbera, Bossaso, Elmaan)

	1997	1998	1999	2000	2001	2002	2003	2004	2005	2006	2007	2008	2009	2010	2011	2012
Rice	66,419	43,410	63,464	75,687	74,729	144,600	180,614	146,567	150,017	198,101	166,626	136,007	171,472	161,415	272,877	227,955
Wheat flour	35,143	26,774	55,176	78,555	134,425	128,263	171,442	151,555	169,583	178,345	176,821	169,208	240,247	249,080	258,679	268,491
Pasta	2,510	2,455	8,544	11,071	26,702	35,425	29,273	38,749	39,153	52,815	41,331	38,441	86,372	102,373	184,849	337,878

Figure 52: Total Cereal Imports (Berbera, Bossaso and Elmaan)

