

Market Update

Highlights

Inflation:

SoSh (Somali shilling)-using areas: Consumer Price Index (CPI) either remained relatively stable or declined mildly (1-6%) in most of SoSh using areas in July and August 2017 month-on-month except in Northeast where the CPI mildly increased by 6% in August as a result of increase in red sorghum prices. The CPI highly rose (5-19%) annually due to increases in cereal prices.

SISH (Somaliland shilling)-using areas: The CPI remained stable month-on-month in July and August 2017 but increased (17-19%) year-on-year due to higher cereal prices this year.

Exchange rate:

SoSh-using areas: The exchange rates between SoSh and the United States Dollar (USD) remained relatively stable or changed (+/-) at mild rates against USD in most regions of the country month-on-month in July and August 2017. Annual comparison mostly exhibited mixed patterns; with SoSh mildly gaining value (less than 10%) in most of the southern regions; while mild to high (8-20%) depreciations were recorded in central and northeast regions due to printing of local notes in the regions.

SISH-using areas: The SISH mildly depreciated against the USD in July 2017 (5%) and August 2017 (2%) month-on-month while year-on-year comparison indicates moderate depreciation (of 25-28%) due to increased supply of newly printed local currency notes and a decline in the availability of USD due to reduced livestock exports and export revenue.

Local cereal prices changed at mild rates (less than +/- 10%) in most of the Northern and Central regions while Southern regions recorded declines (11-28%) month-on-month in July and August 2017 due to increased supply in the market as a result of increased market supply from the new Gu'2017 harvest in the surrounding rural areas. Annual comparison indicates higher prices for local grains in most regions of the country attributable to reduced supply due to poor successive harvests except in Juba valley where cereal prices exhibited mild declines in both July and August.

Prices of imported food (rice, sugar, vegetable oil, wheat flour) mostly exhibited relative stability or mild monthly changes (less than 10%) monthly changes (+/-) in local currency terms in July and August 2017 in most regions of the country. Similarly, year-on-year comparison indicates mild increases or decreases in most regions of the country for most of the food imports in July and August 2017. Notably, most of the food imports in Middle Shabelle declined (18-22%) compared to a year ago in both July and August 2017 due to improved security situation thus allowing for increased supply/distribution of food imports.

Livestock prices for local goat and local camel exhibited mild (less than +/- 10%) in most regions of the country month-on-month in July and August 2017; while cattle prices were higher in Juba (in July 2017), Northwest and Shabelle (in August). Compared to a year ago (July 2016 and August 2016), most regions exhibited increases in goat and camel prices except Central and sorghum Belt which showed price declines (14-20%); cattle prices generally exhibited declines in most regions of the country due to deterioration of body conditions. Milk prices (camel and cattle) exhibited mild changes (+/-) in most of the regions of the country month-on-month in both July and August 2017 except in Shabelle valley where milk prices declined (17-22%) in July. On the other hand, milk prices (camel and cattle) increased from moderate to high levels when compared to last year in most regions of the country in July and August 2017.

Labor (unskilled) wages changed mildly (less than +/- 10%) month-on-month in most of the regions of the country in both July and August 2017. Similarly, compared to one year ago (July 2016 and August 2016), mild (less than 10%) mild changes (less than +/- 10%) were recorded in most regions of the country except in Banadir (Mogadishu) and Middle Shabelle. The rates highly declined (48%) in Banadir (Mogadishu) due to increased competition for the available labor opportunities, but increased significantly (33%) in Middle Shabelle due to increased agricultural activities (harvesting) in the surrounding rural areas and increased opportunities in the town centers as a result of improved security in the region.

Terms of Trade (ToT) between daily labor wage and cereals remained relatively stable or mildly changed (by 1-2kg of cereals/daily labor wage) in most regions of the country in July and August 2017. Annual comparison indicates lower ToT between daily labor and cereals in most regions due to declines in labor wages and/or increase in cereal prices. ToT between local quality goat and cereals mostly increased from mild to moderate levels in most regions of the country month-on-month in July and August 2017 due to declines in cereal prices and/or mild increases in goat prices. Annual comparison indicates the ToT between goat and cereals are lower in most regions of the country except in Northern and Juba Valley where the ToT increased due to increase in goat prices and/or decline in grain prices compared to a year ago (July 2016 and August 2016).

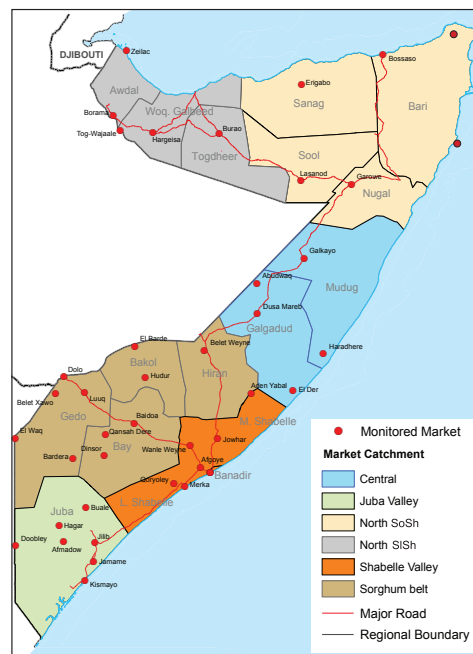
Towns Affected by Trade Disruption (Bulo Burto, Wajid, Hudur and Diinsor)

Labor (unskilled) wages changed mildly in both July and August 2017 in siege-affected markets month-on-month. Compared to a year ago, wage rates increased in Bulo-Burto (7%) and Wajid (136% in July and 44%-in August) due to increased opportunities from loading and off-loading activities as a result of increased humanitarian distribution of food aid; while wages rates declined in Hudur (13-16%) and Dinsor (5-17%) in both July and August.

Terms of Trade (ToTs) between daily labor wage and cereals and between local quality goat and cereals either remained relatively stable or changed at mild rates month-on-month in all the markets. Annual comparison indicates relatively stable ToT between labor and cereals but lower for ToT between goat and cereals in Hudur, Wajid and Bulo-Burto.

Local grain (red and white sorghum) prices declined in siege affected markets due to increased supply from the new (2017 Gu) harvest and humanitarian food aid distribution. Compared to a year ago, local grain prices in these markets have highly increased (41-100%) in both July and August 2017 except in Dinsor where prices remained stable in July but declined in August 2017.

Prices of imported food items (rice, sugar, vegetable oil, wheat flour) changed (+/-) at mild rates for most of the food imports in all siege affected markets month-on-month in both July and August 2017. Annual comparison indicates mild to moderate declines for most of the food imports in the siege-affected markets in July and August 2017 as a result of relative improvement in security conditions.



This Market Update is a monthly report that presents analysis of market information and is produced regularly as part of the monthly monitoring process.

The weekly price data is collected from 48 main markets and 51 rural markets throughout Somalia since 1995.

Market analysis is an integral part of all of FSNAU's annual food security projections and seasonal technical reports (Technical Reports on FSNAU Post Gu and Post Deyr Analysis).

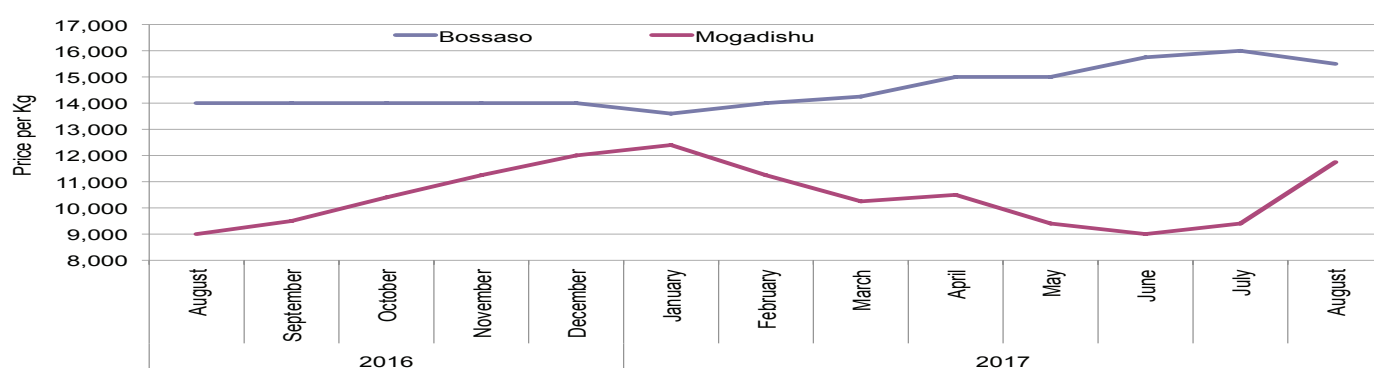
Detailed market data are available online on www.fsnau.org/ids.

National Trends: CPI, Exchange Rates, Cereal Prices and Relative Purchasing Power

Table 1: ToT between Daily Labour Wage Rate and Cereals by Region July and August 2017

Regions	For July 2017				For August 2017			
	July 2017 (kg)	kg change from			August 2017 (kg)	kg change from		
		June 2017	July 2016	July 5 year Average (2012 - 2016)		July 2017	August 2016	August 5 year Average (2012 - 2016)
Banadir/Mogadishu (White maize)	6	-1	-11	-9	7	1	-13	-13
Bay (Red sorghum)	10	1	-4	-5	11	1	-3	-4
Bakool (Red sorghum)	3	0	-2	-2	3	0	-2	-2
Gedo (Red sorghum)	9	-1	-4	-6	10	1	-3	-4
Juba (White maize)	10	3	2	0	11	1	2	1
Shabelle (White maize)	6	-1	-2	-2	7	1	-2	-3
Northwest (Imported Rice)	12	1	1	3	12	0	0	3
Northeast (Imported Rice)	8	0	0	1	8	0	0	1
Central (Imported Rice)	5	0	0	1	5	0	0	1

Figure 1: Wheat Prices: Mogadishu and Bossaso Markets



Source: FSNAU Manifest Price Monitoring System

Figure 2: Terms of Trade Between Wage Rates and Selected Cereals

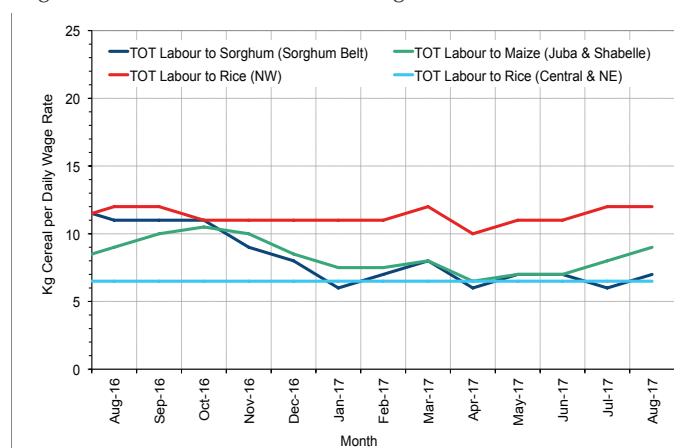


Figure 3: Monthly Exchange Rate for Selected Regions (SoSh and SiSh to USD)

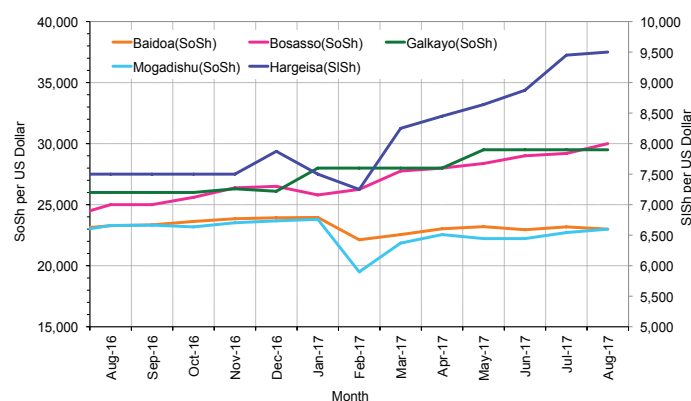


Figure 4: Monthly Trends in Consumer Price Index (CPI, March 2007=100)

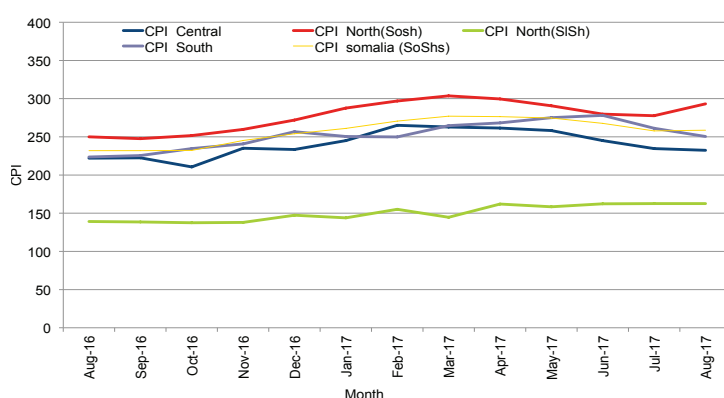
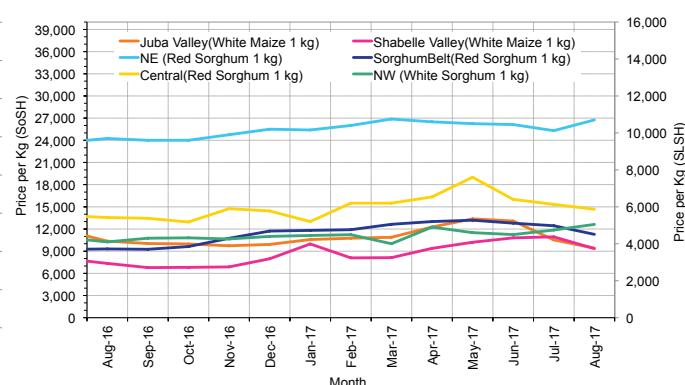


Figure 5: Monthly Trends in Local Cereal Prices



Regional analysis: Juba Regions

Indicator	5-Year Average (2012-2016)	Aug-16	Jul-17	Aug-17 Nominal Price	Aug-17 Real (Deflated) Price	% Change Previous Month	% Change Same Month Previous Year	% Change 5-year avrg (2012-2016)
Imported Commodities Prices								
Diesel 1 litre	26,228	20,281	20,719	20,375	8,045	-2%	0%	-22%
Imported Red Rice 1kg	15,941	15,266	15,500	15,750	6,196	2%	3%	-1%
Petrol 1 litre	28,426	23,250	22,875	22,500	8,895	-2%	-3%	-21%
Sugar	17,171	15,750	17,188	16,844	6,634	-2%	7%	-2%
Vegetable Oil 1 litre	31,850	29,531	28,500	28,563	11,319	0%	-3%	-10%
Wheat Flour 1kg	15,503	14,656	15,406	15,594	6,134	1%	6%	1%
Wheat Grain 1kg	16,000	16,000	-	-	-	-	-	-
Cereal Prices								
Red Sorghum 1kg	7,620	8,000	9,125	8,083	3,131	-11%	1%	6%
White Maize 1kg	9,081	10,366	10,531	9,403	3,659	-11%	-9%	4%
Livestock & Livestock Product Prices								
Camel Local Quality (Head)	9,507,600	8,100,000	10,846,771	11,552,083	4,618,028	7%	43%	22%
Cattle Local Quality (Head)	3,859,303	3,025,000	3,795,833	3,884,722	1,552,879	2%	28%	1%
Fresh Camel Milk 1 litre	16,257	17,047	17,031	16,281	6,409	-4%	-4%	0%
Goat Export Quality (Head)	1,436,802	1,197,500	1,525,000	1,600,000	639,525	5%	34%	11%
Goat Local Quality (Head)	932,983	698,750	952,656	911,458	364,270	-4%	30%	-2%
Other Essential Items								
Charcoal 50kg	80,376	80,813	98,750	93,802	37,399	-5%	16%	17%
Cowpeas 1 kg	21,169	26,000	24,714	23,714	9,380	-4%	-9%	12%
Unskilled Labor Wage Rate	91,275	96,438	104,625	100,094	39,914	-4%	4%	10%
Firewood Bundle	8,865	8,203	7,141	7,036	2,713	-1%	-14%	-21%
Local Sesame Oil 1 litre	66,187	52,313	47,938	49,656	19,751	4%	-5%	-25%
Exchange Rate (Somali Shilling per USD)	21,686	23,063	22,913	22,938	9,070	0%	-1%	6%
Terms of Trade								
Labour Wage (Daily)/ Cereal (Maize(Kg))	10	9	10	11	-	10%	22%	10%
Local Goat (Head)/ Cereal (Maize(Kg))	105	67	90	97	-	8%	45%	-8%
Price Indices								
Consumer Price Index	-	224	261	250	-	-4%	12%	-

Figure 6: Trends in Cereal Prices

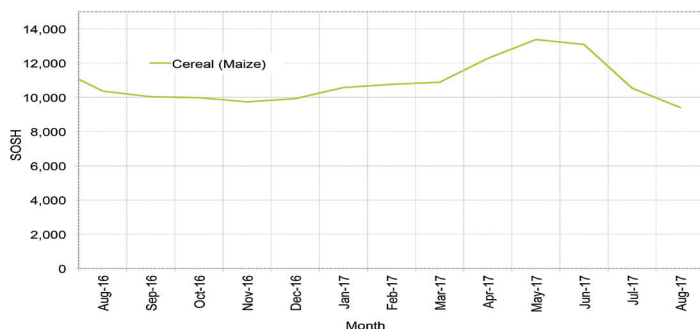


Figure 7: Trends in Wage Rates and Relative Purchasing Power

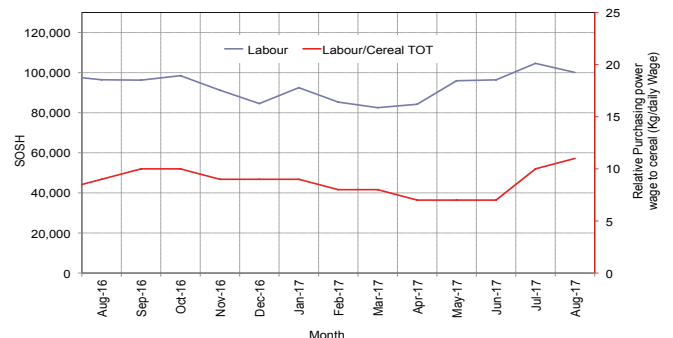


Figure 8: Imported Commodity Prices Compared to Exchange Rate

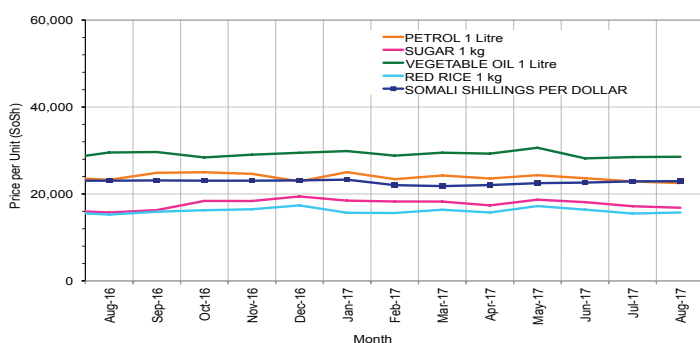


Figure 9: Goat Local Quality

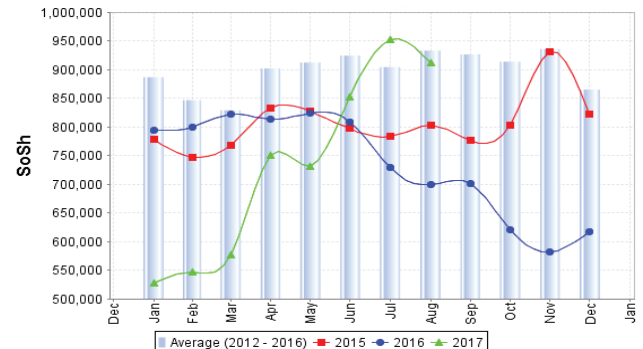


Figure 10: Exchange Rate

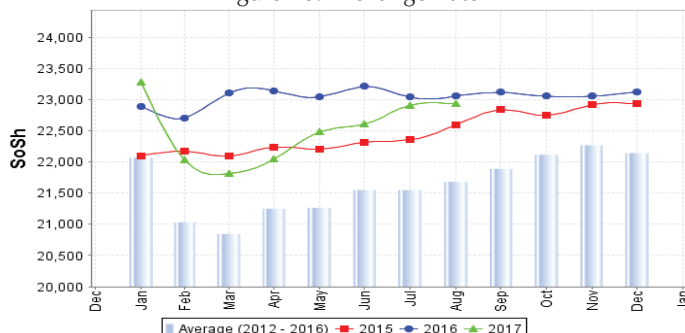
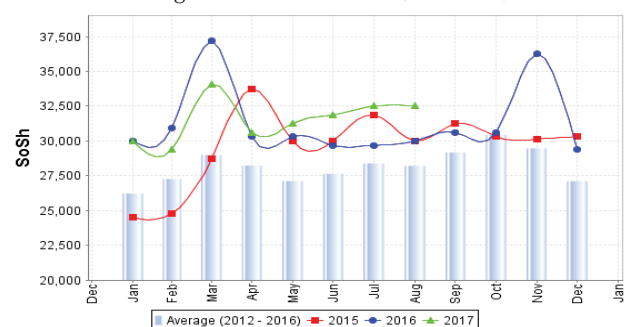


Figure 11: Water Drum (200 litres)



Regional analysis: Sorghum Belt Regions (Bay, Bakool, Gedo and Hiran)

Indicator	5-Year Average (2012-2016)	Aug-16	Jul-17	Aug-17 Nominal Price	Aug-17 Real (Deflated) Price	% Change Previous Month	% Change Same Month Previous Year	% Change 5-year avrg (2012-2016)
Imported Commodities Prices								
Diesel 1 litre	29,429	24,233	24,817	23,708	9,378	-4%	-2%	-19%
Imported Red Rice 1kg	18,428	19,783	19,650	19,458	7,679	-1%	-2%	6%
Petrol 1 litre	30,110	27,133	27,575	27,708	10,977	0%	2%	-8%
Sugar	19,858	21,933	21,079	20,667	8,162	-2%	-6%	4%
Vegetable Oil 1 litre	38,298	37,300	36,375	35,042	13,909	-4%	-6%	-9%
Wheat Flour 1kg	17,451	18,617	17,588	17,875	7,046	2%	-4%	2%
Wheat Grain 1kg	15,400	19,225	19,050	18,750	7,396	-2%	-2%	22%
Cereal Prices								
Red Sorghum 1kg	8,195	8,858	12,586	11,550	4,517	-8%	30%	41%
White Maize 1kg	9,623	10,200	12,714	12,075	4,727	-5%	18%	25%
Livestock & Livestock Product Prices								
Camel Local Quality (Head)	12,588,089	11,630,000	11,099,600	11,267,500	4,504,261	2%	-3%	-10%
Cattle Local Quality (Head)	3,700,973	3,646,250	2,754,000	2,625,357	1,049,428	-5%	-28%	-29%
Fresh Camel Milk 1 litre	20,245	18,367	24,191	25,182	9,967	4%	37%	24%
Goat Export Quality (Head)	1,609,384	1,552,364	1,574,050	1,627,750	650,619	3%	5%	1%
Goat Local Quality (Head)	1,025,425	854,000	769,833	776,667	310,385	1%	-9%	-24%
Other Essential Items								
Charcoal 50kg	141,133	147,364	162,000	175,455	70,041	8%	19%	24%
Cowpeas 1 kg	22,343	23,892	37,967	37,979	15,083	0%	59%	70%
Unskilled Labor Wage Rate	94,180	92,417	93,521	94,479	37,669	1%	2%	0%
Firewood Bundle	6,479	6,083	6,183	6,167	2,365	0%	1%	-5%
Local Sesame Oil 1 litre	75,354	74,200	83,222	81,889	32,636	-2%	10%	9%
Exchange Rate (Somali Shilling per USD)	21,630	23,253	22,442	22,835	9,029	2%	-2%	6%
Terms of Trade								
Labour Wage (Daily)/ Cereal (Rice (Kg)	5	5	5	5	-	0%	0%	0%
Local Goat (Head)/ Cereal (Rice (Kg)	55	43	39	40	-	3%	-7%	-27%
Price Indices								
Consumer Price Index	-	224	261	250	-	-4%	12%	-

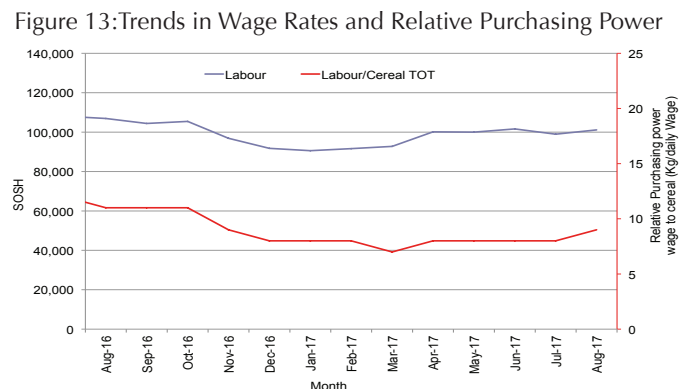
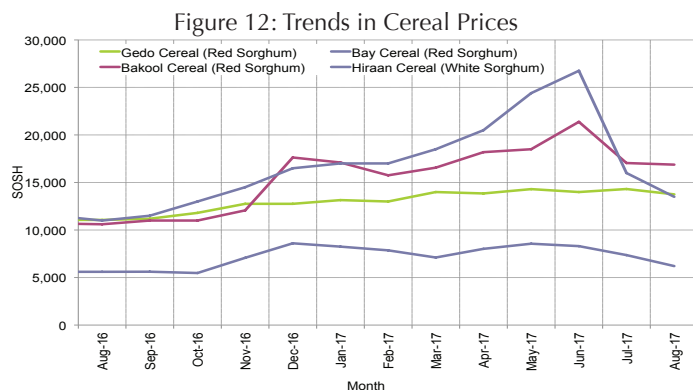


Figure 14: Imported Commodity Prices Compared to Exchange Rate

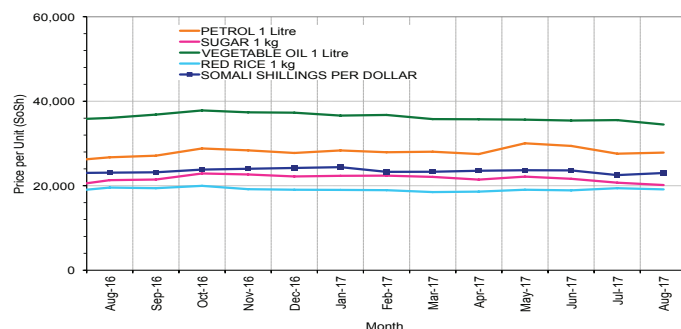


Figure 15: Goat Local Quality

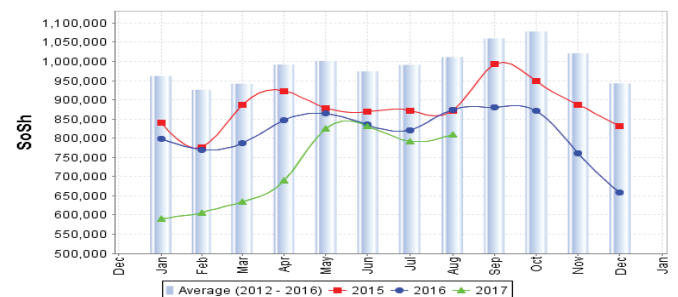


Figure 16: Exchange Rate

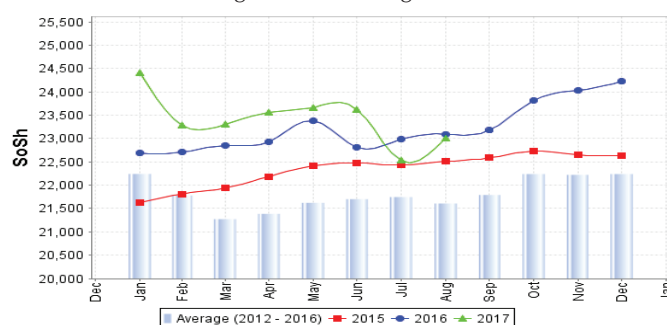
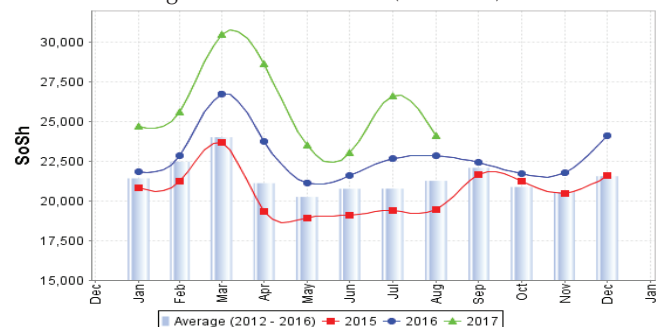


Figure 17: Water Drum (200 litres)



Regional analysis: Shabelle Regions

Indicator	5-Year Average (2012-2016)	Aug-16	Jul-17	Aug-17 Nominal Price	Aug-17 Real (Deflated) Price	% Change Previous Month	% Change Same Month Previous Year	% Change 5-year avrg (2012-2016)
Imported Commodities Prices								
Diesel 1 litre	25,574	20,500	16,583	16,833	6,629	2%	-18%	-34%
Imported Red Rice 1kg	15,733	16,833	16,083	16,500	6,496	3%	-2%	5%
Petrol 1 litre	28,100	25,292	20,125	19,875	7,845	-1%	-21%	-29%
Sugar	18,475	20,667	18,500	17,833	7,029	-4%	-14%	-3%
Vegetable Oil 1 litre	29,283	29,000	29,750	28,708	11,376	-4%	-1%	-2%
Wheat Flour 1kg	15,825	16,000	15,042	15,375	6,046	2%	-4%	-3%
Wheat Grain 1kg	15,733	20,000	-	-	-	-	-	-
Cereal Prices								
Red Sorghum 1kg	9,319	8,906	13,558	13,104	5,139	-3%	47%	41%
White Maize 1kg	7,109	7,343	10,938	9,348	3,637	-15%	27%	31%
Livestock & Livestock Product Prices								
Camel Local Quality (Head)	17,214,000	16,745,000	16,543,750	17,641,458	7,052,351	7%	5%	2%
Cattle Local Quality (Head)	5,751,000	5,322,500	3,650,000	4,225,000	1,688,910	16%	-21%	-27%
Fresh Camel Milk 1 litre	18,462	18,583	20,875	20,917	8,262	0%	13%	13%
Goat Export Quality (Head)	1,964,200	1,958,125	1,849,375	1,808,750	722,976	-2%	-8%	-8%
Goat Local Quality (Head)	1,340,583	1,334,167	1,321,667	1,294,167	517,264	-2%	-3%	-3%
Other Essential Items								
Charcoal 50kg	122,426	132,111	133,986	137,528	54,879	3%	4%	12%
Cowpeas 1 kg	18,439	19,694	49,722	45,694	18,167	-8%	132%	148%
Unskilled Labor Wage Rate	70,250	65,917	66,250	67,083	26,717	1%	2%	-5%
Firewood Bundle	6,458	5,833	5,625	5,625	2,149	0%	-4%	-13%
Local Sesame Oil 1 litre	56,968	45,167	52,958	52,250	20,788	-1%	16%	-8%
Exchange Rate (Somali Shilling per USD)	21,786	23,425	23,125	23,225	9,185	0%	-1%	7%
Terms of Trade								
Labour Wage (Daily)/ Cereal (Maize(Kg))	10	9	6	7	-	17%	-22%	-30%
Local Goat (Head)/ Cereal (Maize(Kg))	193	182	121	138	-	14%	-24%	-28%
Price Indices								
Consumer Price Index	-	224	261	250	-	-4%	12%	-

Figure 18: Trends in Cereal Prices

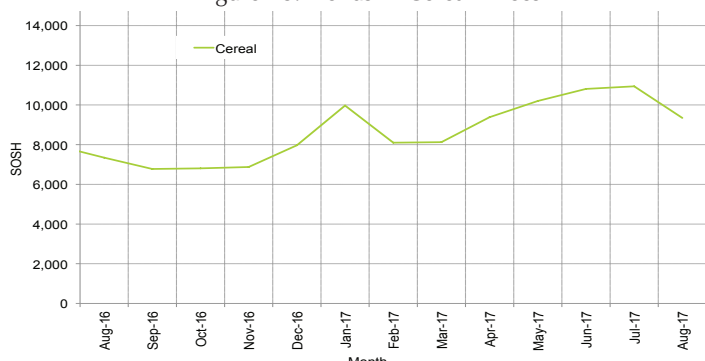


Figure 19: Trends in Wage Rates and Relative Purchasing Power

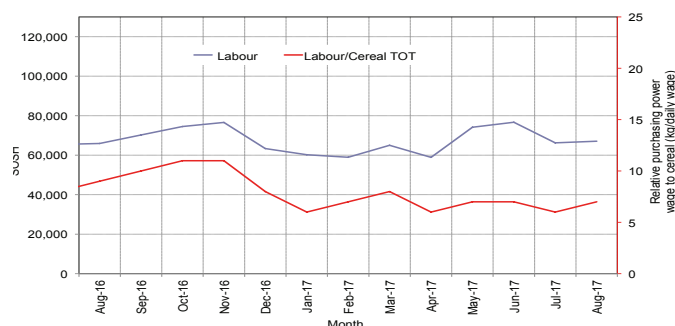


Figure 20: Imported Commodity Prices Compared to Exchange Rate

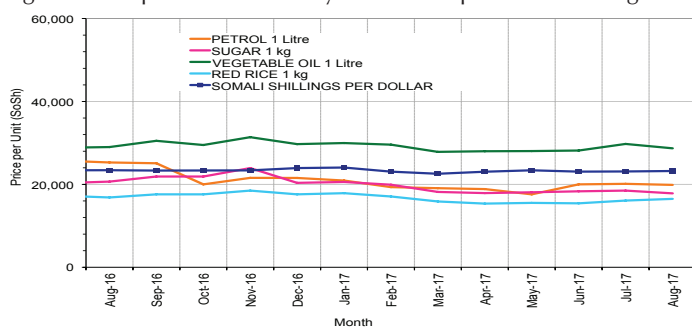


Figure 22: Exchange Rate

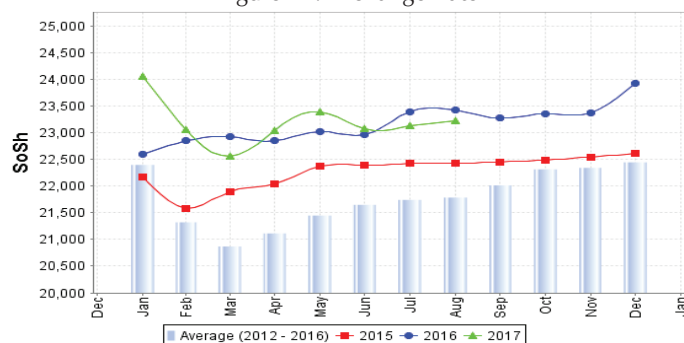


Figure 21: Goat Local Quality

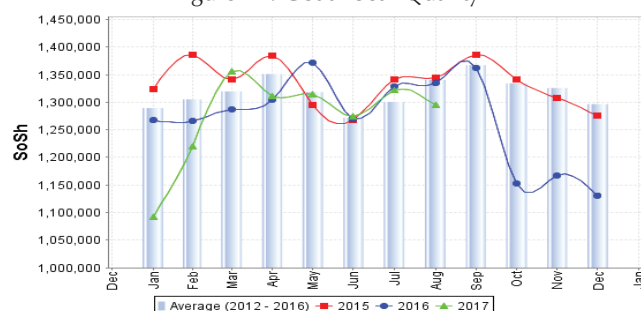
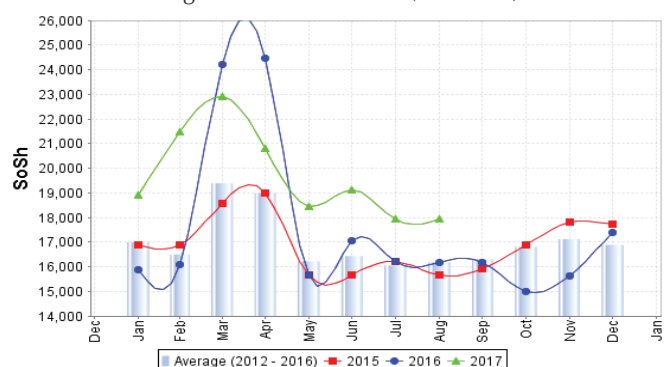


Figure 23: Water Drum (200 litres)



Regional analysis: Banadir Region

Indicator	5-Year Average (2012-2016)	Aug-16	Jul-17	Aug-17 Nominal Price	Aug-17 Real (Deflated) Price	% Change Previous Month	% Change Same Month Previous Year	% Change 5-year avrg (2012-2016)
Imported Commodities Prices								
Diesel 1 litre	20,400	14,467	13,113	13,392	5,254	2%	-7%	-34%
Imported Red Rice 1kg	12,561	12,083	12,033	11,917	4,664	-1%	-1%	-5%
Petrol 1 litre	21,273	16,467	15,833	15,833	6,229	0%	-4%	-26%
Sugar	14,918	15,458	15,067	14,750	5,797	-2%	-5%	-1%
Vegetable Oil 1 litre	24,666	21,025	22,333	22,417	8,862	0%	7%	-9%
Wheat Flour 1kg	11,655	10,517	10,633	12,125	4,747	14%	15%	4%
Wheat Grain 1kg	10,228	10,900	16,800	16,125	6,346	-4%	48%	58%
Cereal Prices								
Red Sorghum 1kg	6,322	6,535	11,667	10,542	4,114	-10%	61%	67%
White Maize 1kg	8,635	8,083	13,600	12,342	4,834	-9%	53%	43%
Livestock & Livestock Product Prices								
Camel Local Quality (Head)	-	-	-	-	-	-	-	-
Cattle Local Quality (Head)	-	-	-	-	-	-	-	-
Fresh Camel Milk 1 litre	22,540	25,467	28,333	27,333	10,827	-4%	7%	21%
Goat Export Quality (Head)	2,490,000	2,300,000	2,540,000	2,700,000	1,079,268	6%	-	8%
Goat Local Quality (Head)	2,086,000	1,640,000	2,140,000	2,150,000	859,396	0%	31%	3%
Other Essential Items								
Charcoal 50kg	192,040	177,333	219,733	218,000	87,049	-1%	23%	14%
Cowpeas 1 kg	17,841	19,433	49,267	47,067	18,716	-4%	142%	164%
Unskilled Labor Wage Rate	115,333	117,667	82,000	80,833	32,214	-1%	-31%	-30%
Firewood Bundle	7,478	7,500	8,000	8,000	3,098	0%	7%	7%
Local Sesame Oil 1 litre	56,420	43,333	54,333	53,667	21,354	-1%	24%	-5%
Exchange Rate (Somali Shilling per USD)	21,501	23,108	22,493	22,692	8,971	1%	-2%	6%
Terms of Trade								
Labour Wage (Daily)/ Cereal (Rice(Kg))	9	10	7	7	-	0%	-30%	-22%
Local Goat (Head)/ Cereal (Rice(Kg))	166	136	178	180	-	1%	32%	8%
Price Indices								
Consumer Price Index	-	224	261	250	-	-4%	12%	-

Figure 24: Trends in Cereal Prices

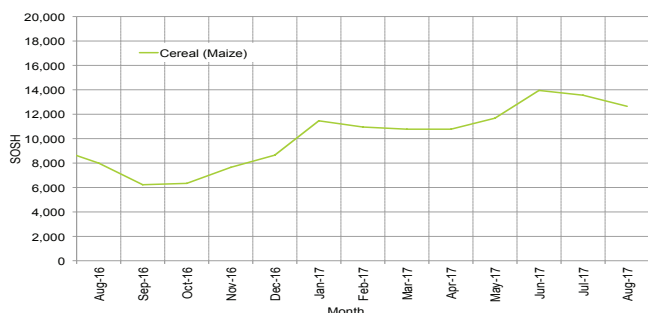


Figure 25: Bakara: Trends in Wage Rates and Relative Purchasing Power

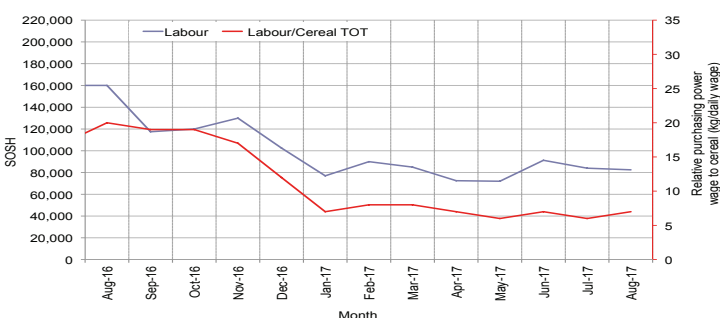


Figure 26: Imported Commodity Prices Compared to Exchange Rate

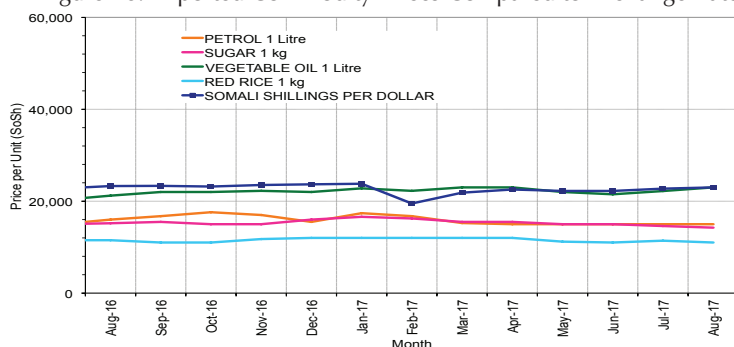


Figure 27: Goat Local Quality

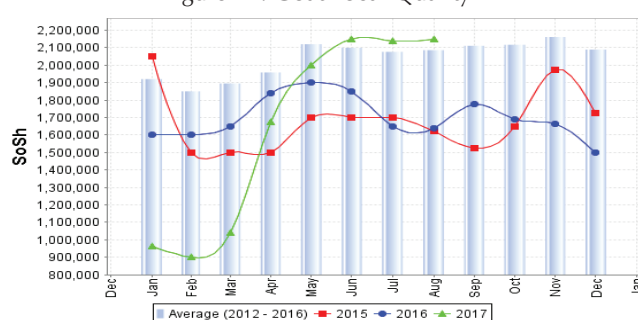


Figure 28: Exchange Rate

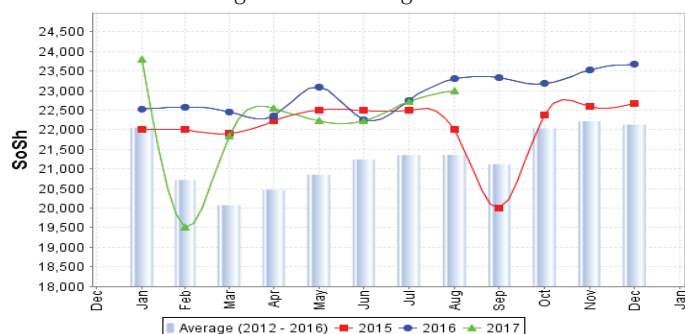
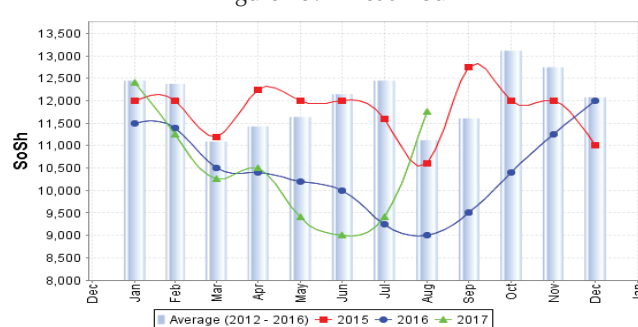


Figure 29: Wheat Flour



Regional analysis: Central Regions

Indicator	5-Year Average (2012-2016)	Aug-16	Jul-17	Aug-17 Nominal Price	Aug-17 Real (Deflated) Price	% Change Previous Month	% Change Same Month Previous Year	% Change 5-year avg (2012-2016)
Imported Commodities Prices								
Diesel 1 litre	25,994	18,400	23,680	23,680	10,090	0%	29%	-9%
Imported Red Rice 1kg	18,794	18,320	18,600	19,200	8,162	3%	5%	2%
Petrol 1 litre	24,480	21,300	24,920	25,600	10,916	3%	20%	5%
Sugar	21,482	21,760	23,000	23,200	9,883	1%	7%	8%
Vegetable Oil 1 litre	40,968	33,920	40,600	42,600	18,232	5%	26%	4%
Wheat Flour 1kg	16,438	15,480	16,000	16,200	6,871	1%	5%	-1%
Wheat Grain 1kg	15,526	16,800	20,000	22,000	9,367	10%	31%	42%
Cereal Prices								
Red Sorghum 1kg	12,249	13,550	15,333	14,667	6,211	-4%	8%	20%
White Maize 1kg	13,324	15,500	14,750	14,750	6,247	0%	-5%	11%
Livestock & Livestock Product Prices								
Camel Local Quality (Head)	11,643,750	13,075,000	9,700,000	10,200,000	4,389,139	5%	-22%	-12%
Cattle Local Quality (Head)	3,000,000	-	-	-	-	-	-	-
Fresh Camel Milk 1 litre	31,750	32,680	52,000	52,000	22,277	0%	59%	64%
Goat Export Quality (Head)	1,386,100	1,473,333	1,212,500	1,250,000	537,797	3%	-15%	-10%
Goat Local Quality (Head)	1,051,800	986,000	770,000	850,000	365,670	10%	-14%	-19%
Other Essential Items								
Charcoal 50kg	165,840	162,400	188,000	218,000	93,709	16%	34%	31%
Cowpeas 1 kg	23,234	29,560	50,800	59,800	25,633	18%	102%	157%
Unskilled Labor Wage Rate	87,900	96,000	94,000	94,000	40,350	0%	-2%	7%
Firewood Bundle	32,940	32,000	35,000	35,000	14,961	0%	9%	6%
Local Sesame Oil 1 litre	87,540	81,000	80,500	80,500	34,541	0%	-1%	-8%
Exchange Rate (Somali Shilling per USD)	22,049	24,955	25,800	27,075	11,551	5%	8%	23%
Terms of Trade								
Labour Wage (Daily)/ Cereal (Rice(Kg))	4	5	5	5	-	0%	0%	25%
Local Goat (Head)/ Cereal (Rice(Kg))	55	54	41	44	-	7%	-19%	-20%
Camel (Head)/Cereal (Kg)	626	714	522	531	-	2%	-26%	-15%
Price Indices								
Consumer Price Index	-	222	235	232	-	-1%	5%	-

Figure 30: Trends in Cereal Prices

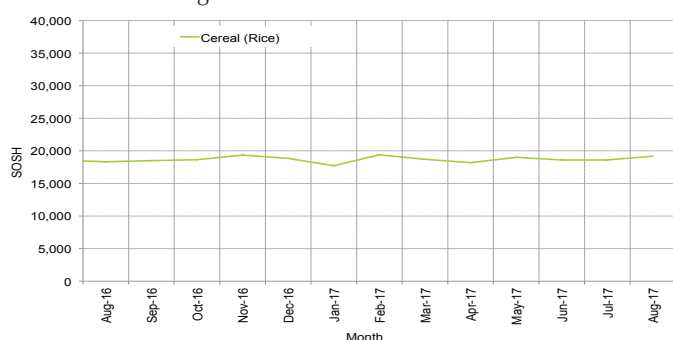


Figure 31: Trends in wage rates and relative purchasing power

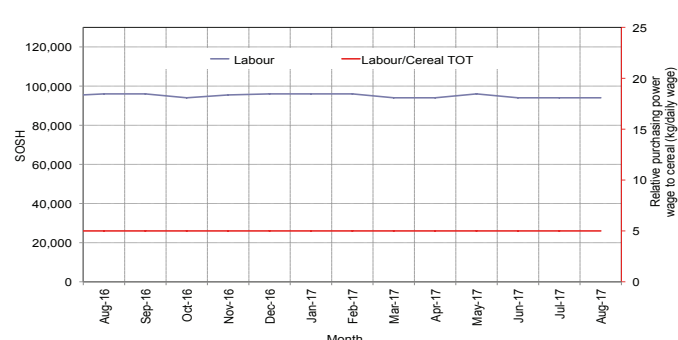


Figure 32: Imported Commodity Prices Compared to Exchange Rate

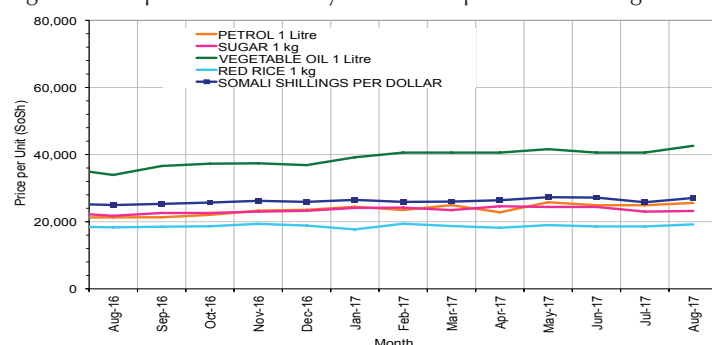


Figure 33: Goat Local Quality

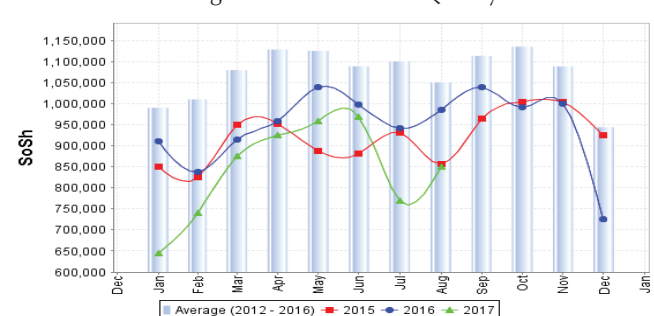


Figure 34: Exchange Rate

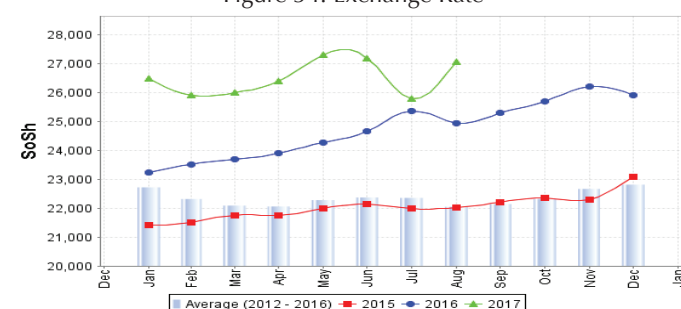
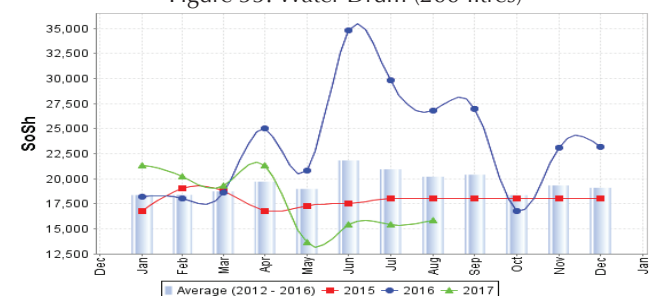


Figure 35: Water Drum (200 litres)



Regional analysis: Northeast Regions

Indicator	5-Year Average (2012-2016)	Aug-16	Jul-17	Aug-17 Nominal Price	Aug-17 Real (Deflated) Price	% Change Previous Month	% Change Same Month Previous Year	% Change 5-year avrg (2012-2016)
Imported Commodities Prices								
Diesel 1 litre	23,668	16,643	20,229	20,964	7,050	4%	26%	-11%
Imported Red Rice 1kg	18,148	16,707	18,136	18,071	6,063	0%	8%	0%
Petrol 1 litre	24,140	21,214	24,236	24,121	8,127	0%	14%	0%
Sugar	21,091	21,136	22,786	22,786	7,672	0%	8%	8%
Vegetable Oil 1 litre	37,729	32,086	33,929	34,250	11,581	1%	7%	-9%
Wheat Flour 1kg	17,277	16,143	17,500	17,286	5,796	-1%	7%	0%
Wheat Grain 1kg	30,082	30,600	34,800	34,100	11,530	-2%	11%	13%
Cereal Prices								
Red Sorghum 1kg	21,970	24,250	25,300	26,750	9,023	6%	10%	22%
White Maize 1kg	21,120	24,000	22,000	21,500	7,233	-2%	-10%	2%
Livestock & Livestock Product Prices								
Camel Local Quality (Head)	15,120,099	13,673,500	14,045,500	14,976,500	5,107,857	7%	10%	-1%
Cattle Local Quality (Head)	8,435,000	9,625,000	10,250,000	11,000,000	3,751,613	7%	14%	30%
Fresh Camel Milk 1 litre	38,663	41,690	55,807	57,267	19,432	3%	37%	48%
Goat Export Quality (Head)	1,431,300	1,276,500	1,529,000	1,555,000	530,256	2%	22%	9%
Goat Local Quality (Head)	1,359,321	1,189,286	1,367,143	1,370,714	467,402	0%	15%	1%
Other Essential Items								
Charcoal 50kg	350,557	363,929	371,429	378,214	128,895	2%	4%	8%
Cowpeas 1 kg	38,668	36,683	47,942	62,361	21,169	30%	70%	61%
Unskilled Labor Wage Rate	135,614	137,643	137,500	140,000	47,649	2%	2%	3%
Firewood Bundle	34,078	35,821	44,250	47,250	16,015	7%	32%	39%
Local Sesame Oil 1 litre	97,540	96,300	112,500	111,500	37,929	-1%	16%	14%
Exchange Rate (Somali Shilling per USD)	21,135	23,393	27,650	27,786	9,377	0%	19%	31%
Terms of Trade								
Labour Wage (Daily)/ Cereal (Rice(Kg))	7	8	8	8	-	0%	0%	14%
Local Goat (Head)/ Cereal (Rice(Kg))	75	71	75	76	-	1%	7%	1%
Price Indices								
Consumer Price Index	-	250	278	293	-	6%	17%	-

Figure 36: Trends in Cereal Prices

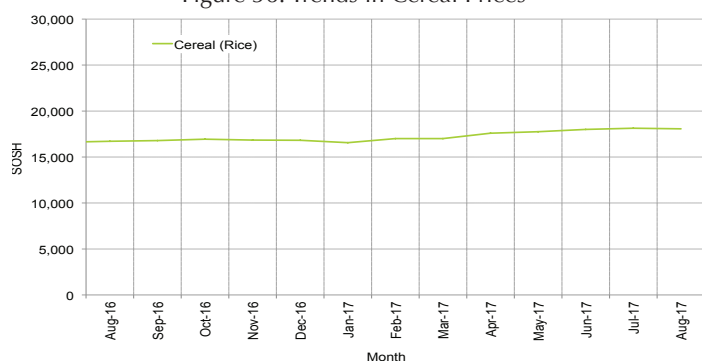


Figure 37: Trends in Wage Rates and Relative Purchasing Power

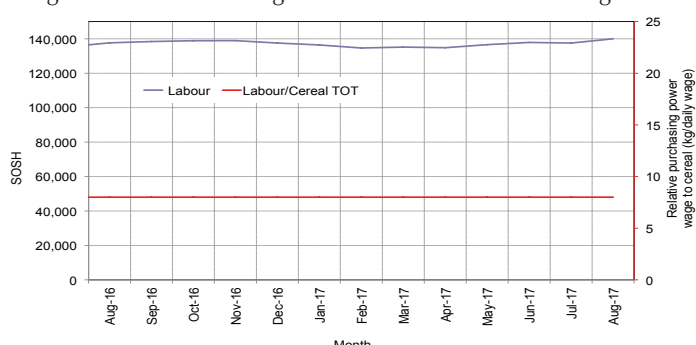


Figure 38: Imported Commodity Prices Compared to Exchange Rate

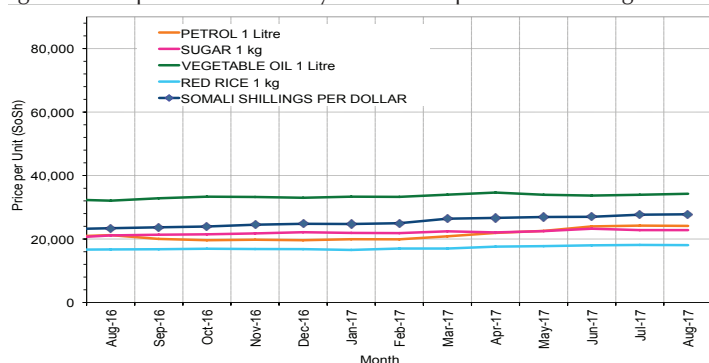


Figure 39: Goat Local Quality

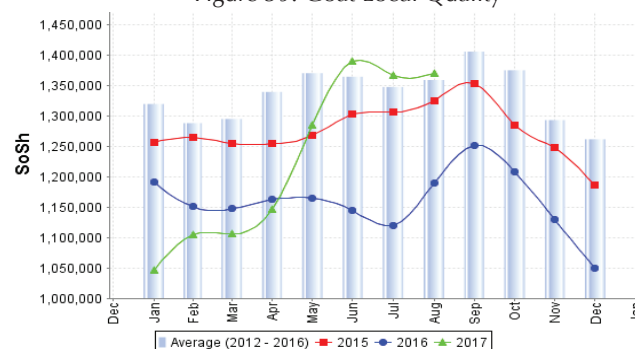


Figure 40: Exchange Rate

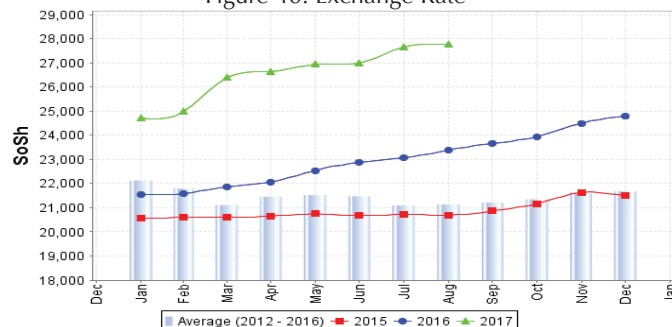
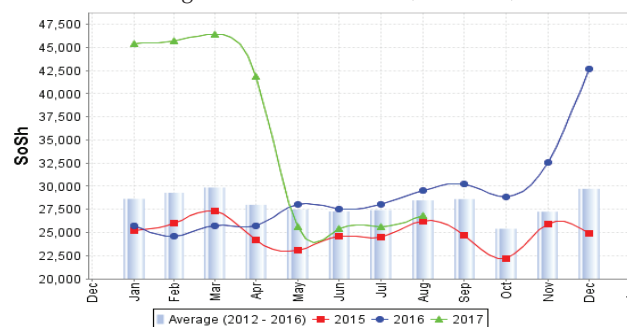


Figure 41: Water Drum (200 litres)



Regional analysis: Northwest Regions

Indicator	5-Year Average (2012-2016)	Aug-16	Jul-17	Aug-17 Nominal Price	Aug-17 Real (Deflated) Price	% Change Previous Month	% Change Same Month Previous Year	% Change 5-year avg (2012-2016)
Imported Commodities Prices								
Diesel 1 litre	6,452	5,080	5,831	5,931	3,548	2%	17%	-8%
Imported Red Rice 1kg	5,006	5,210	5,240	5,240	3,123	0%	1%	5%
Petrol 1 litre	7,026	6,020	7,560	7,560	4,550	0%	26%	8%
Sugar	5,820	5,700	6,258	6,300	3,775	1%	11%	8%
Vegetable Oil 1 litre	12,403	12,200	13,240	12,800	7,773	-3%	5%	3%
Wheat Flour 1kg	4,528	4,840	4,600	4,500	2,668	-2%	-7%	-1%
Wheat Grain 1kg	3,670	3,875	4,375	4,625	2,745	6%	19%	26%
Cereal Prices								
White Sorghum 1kg	3,724	4,100	4,740	5,050	3,006	7%	23%	36%
Yellow Maize 1kg	3,880	4,600	5,060	5,750	3,437	14%	25%	48%
Livestock & Livestock Product Prices								
Camel Local Quality (Head)	3,961,849	4,364,583	4,858,333	5,023,333	3,089,515	3%	15%	27%
Cattle Local Quality (Head)	2,337,786	2,365,833	2,504,333	2,835,417	1,743,831	13%	20%	21%
Fresh Camel Milk 1 litre	6,407	8,800	11,350	11,400	6,912	0%	30%	78%
Goat Export Quality (Head)	450,453	426,906	536,794	533,125	327,800	-1%	25%	18%
Goat Local Quality (Head)	335,061	304,250	431,840	426,810	262,411	-1%	40%	27%
Other Essential Items								
Charcoal 50kg	51,962	68,500	72,500	74,000	45,414	2%	8%	42%
Cowpeas 1 kg	10,635	13,500	18,000	19,500	11,894	8%	44%	83%
Unskilled Labor Wage Rate	48,416	60,500	62,900	63,400	38,894	1%	5%	31%
Firewood Bundle	4,119	5,600	5,333	5,333	3,180	0%	-5%	29%
Local Sesame Oil 1 litre	31,187	32,188	36,500	37,000	22,657	1%	15%	19%
Exchange Rate (Somaliland Shilling per USD)	7,011	7,500	9,400	9,580	5,792	2%	28%	37%
Terms of Trade								
Labour Wage (Daily)/ Cereal (Rice(Kg))	9	12	12	12	-	0%	0%	33%
Local Goat (Head)/ Cereal (Rice(Kg))	66	58	82	81	-	-1%	40%	23%
Price Indices								
Consumer Price Index	-	139	163	163	-	0%	17%	-

Figure 42: Trends in Cereal Prices

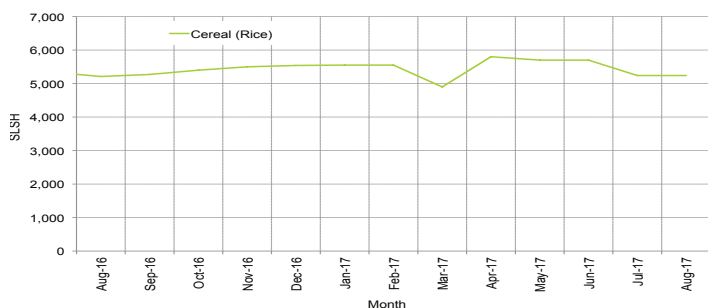


Figure 43: Trends in Wage Rates and Relative Purchasing Power

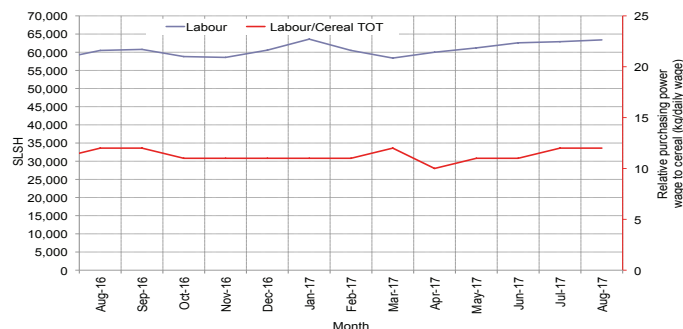


Figure 44: Imported Commodity Prices Compared to Exchange Rate

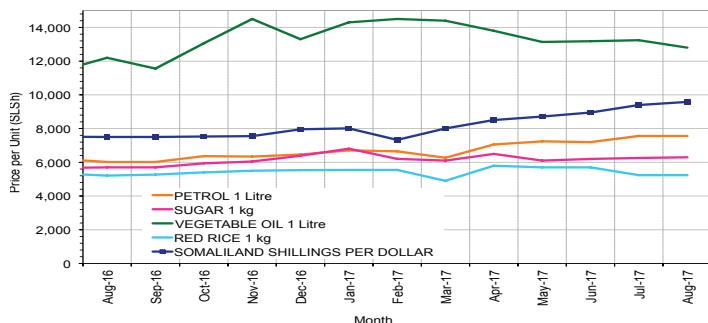


Figure 45: Goat Local Quality

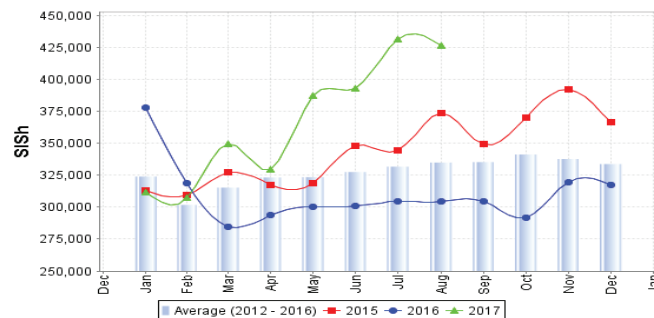


Figure 46: Exchange Rate

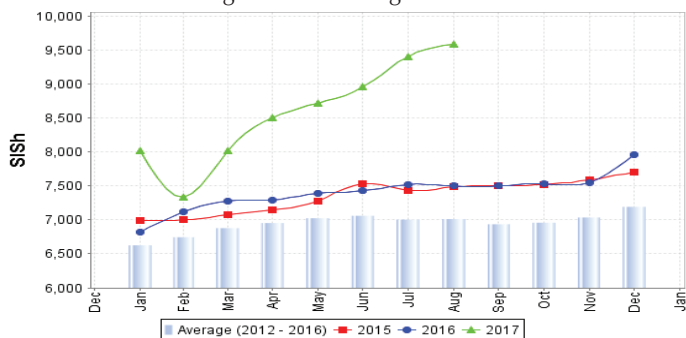
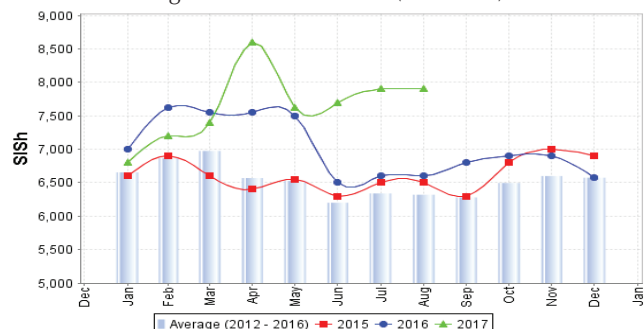


Figure 47: Water Drum (200 litres)



Trends in Livestock Exports

Table 1: Berbera Livestock Exports (Number of Heads)

	2000	2001	2002	2003	2004	2005	2006	2007	2008	2009	2010	2011	2012	2013	2014	2015	2016
Shoats	1 601 083	51 546	341 711	563 107	859 404	1 023 795	1 017 242	1 350 054	1 219 519	1 556 003	2 584 810	3 104 684	3 219 584	2 888 955	3 089 592	3 270 386	2 880 057
Cattle	63 263	20 973	37 547	84 312	131 852	148 151	85 631	88 143	80 051	88 005	133 021	150 934	190 354	20 875	252 597	160,395	150 133
Camel	16 984	3 473	18,864	21 874	5 147	5 069	22 810	14 245	26 515	20 206	92 651	107 281	102 664	75 728	64 578	61 475	57 841

Figure 48: Berbera Livestock Exports (Number of Heads)

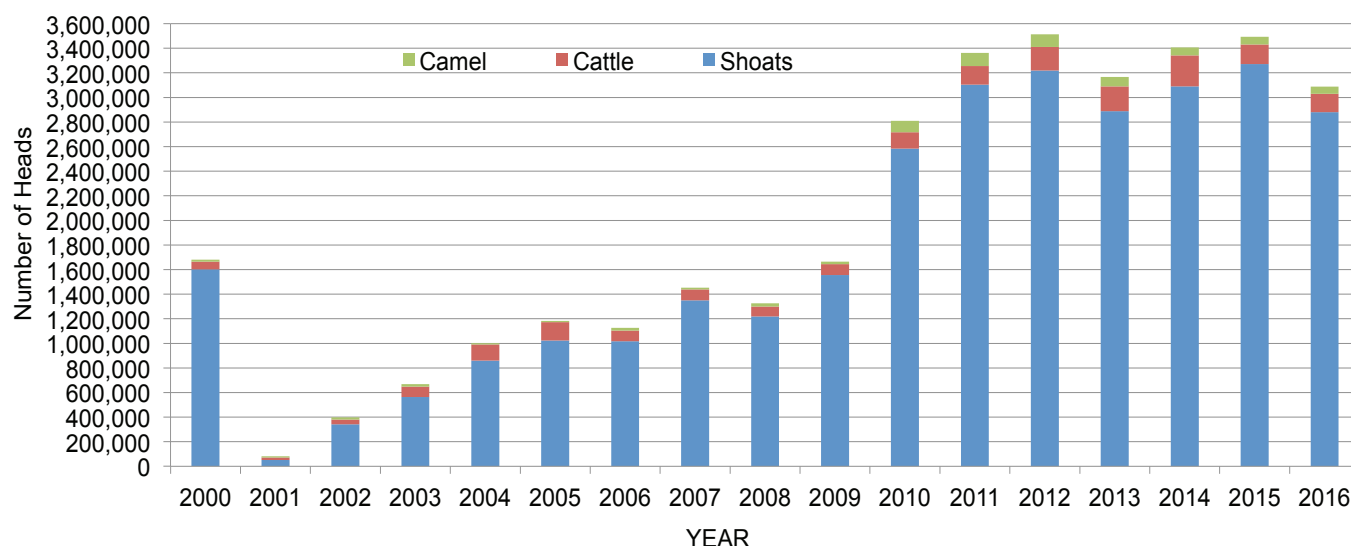
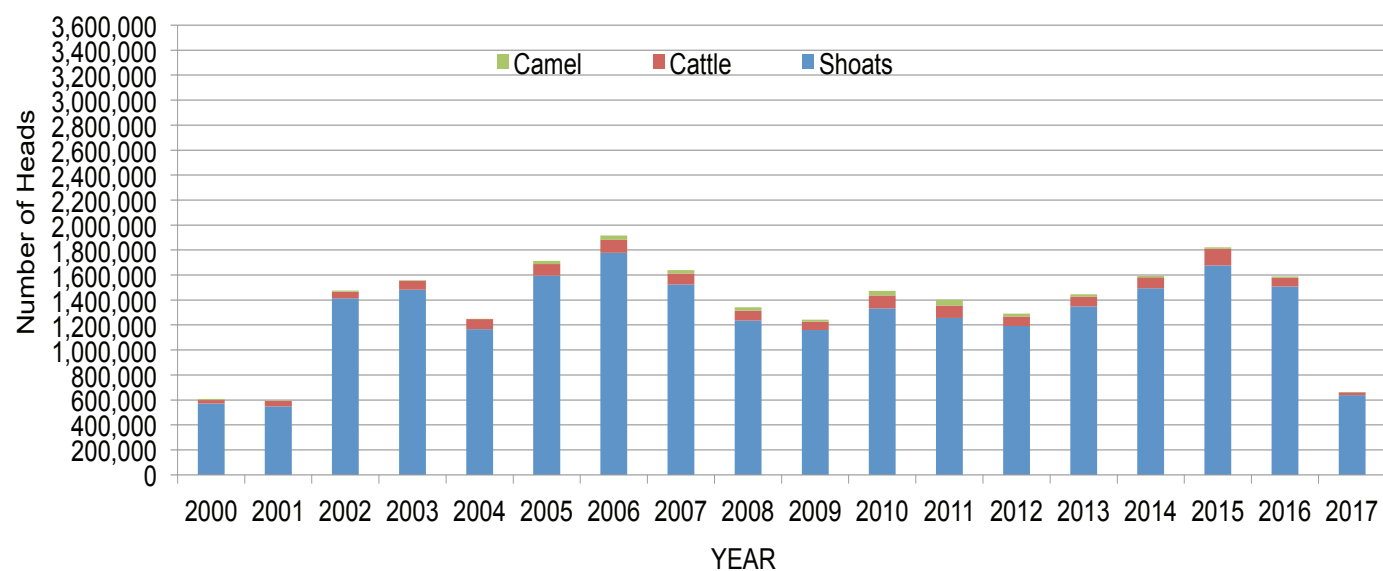


Table 2: Bossaso Livestock Exports (Number of Heads)

	2000	2001	2002	2003	2004	2005	2006	2007	2008	2009	2010	2011	2012	2013	2014	2015	2016	2017
Shoats	571,455	548,853	1,412,450	1,483,409	1,166,480	1,594,859	1,777,283	1,522,855	1,236,775	1,159,454	1,333,478	1,256,535	1,192,197	1,349,123	1,493,111	1,676,216	1 507 910	637 391
Cattle	27,604	42,248	53,313	71,328	79,994	91,910	104,595	89,190	78,046	67,385	103,808	99,058	76,043	77,353	87,759	134,597	70 705	23 770
Camel	8,177	1,950	9,720	4,259	2,488	26,109	33,724	27,580	27,639	15,331	36,865	45,878	22,288	19,032	12,251	10,945	10 144	1 290

Figure 49: Bossaso Livestock Exports (Number of Heads)



Trends in Cereal Imports

Table 3: Total Cereal Imports through Berbera, Bossaso and Mogadishu Ports (Tonnes) *

	2000	2001	2002	2003	2004	2005	2006	2007	2008	2009	2010	2011	2012	2013*	2014*	2015*	2016*	2017*
Rice	75,687	74,729	144,600	180,614	146,567	150,017	198,101	166,626	136,007	171,472	161,415	272,877	227,955	170,868	170,888	195,240	207 267	45 351
Wheat flour	78,555	134,425	128,263	171,442	151,555	169,583	178,345	176,821	169,208	240,247	249,080	258,679	268,491	183,058	284,230	318,868	207 463	61 519
Pasta	11,071	26,702	35,425	29,273	38,749	39,153	52,815	41,331	38,441	86,372	102,373	184,849	337,878	134,311	176,951	155,360	78 113	20 845

* Elman (Mogadishu) is up to November 2015. Mogadishu Data (Elmaan Por) for 2013 includes only January-March imports. Berbera Data is up to December 2016.

Figure 50: Total Cereal Imports (Berbera, Bossaso and Mogadishu)

