

# Market DataUpdate

## Highlights

### Inflation:

**SoSh (Somali shilling)-using areas:** In July and August, 2015 the Consumer Price Index (CPI) changed marginally (1-3%) in the SoSh-using areas. Compared to a year ago (July 2014 and August 2014), the CPI remained relatively stable in Northeast but it dropped by 10-12 percent in South-Central in July and August the year following cereal price declines. **SISh (Somaliland shilling)-using areas:** The CPI remained relatively stable month-on-month in July and August. However the CPI declined in July (9%) and August (7%) compared to a year ago due to declined cereal prices.

### Exchange rate:

**SoSh-using areas:** The exchange rates between SoSh and the United States Dollar (USD) indicated relative stability or marginal monthly changes (1-2%) in July and August. The SoSh depreciated compared to a year ago across all areas, most significantly (11-13%) in Middle Juba. **SISh-using areas:** The SISh changed marginally against the USD (1%) in July and August month-on-month. Annual comparison indicates depreciation both for July (9%) and August (10%). The annual depreciation in both local currencies is mainly attributed to reduced supply of dollars, resulting from restricted operations of money transfer companies in recent months.

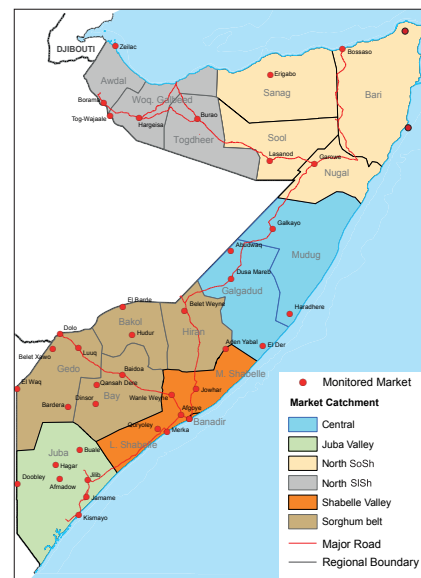
**Local grain** prices remained relatively stable or changed by less than  $\pm 10$  percent in July/August in Central and Northern regions of the country. In southern regions, cereal prices declined at mild to moderate rates due to increased cereal supply from the recent *Gu* harvest. Cereal prices are lower compared to a year ago in most regions of the country, apart from Northeast where prices remained relatively stable. The annual price declines are attributed to recent *Gu* harvest as well as reduced prices of imported cereals.

**Prices of imported food** (rice, sugar, vegetable oil, wheat flour) mostly exhibited relative stability or mild monthly changes in local currency terms in July-August. Notably, prices of most food imports declined (8-18%) month-on-month in August in Middle Shabelle, Hiran and Bakool due to increased humanitarian food distribution in these regions. Annual price comparison indicated generally lower prices for most imported food commodities in July and August.

**Livestock prices** (for all species) as well as milk prices showed mild monthly changes in July/August in most regions of the country. The exception is Central regions where milk prices increased at moderate to high levels due to reduced milk supply as a result of low livestock reproduction during *Gu* season. Annual comparison indicates generally reduced prices of livestock in most regions apart from Lower Shabelle where local cattle prices increased moderately (13-27%). Yearly comparison for milk prices (camel and cattle) showed mixed trend patterns. Market prices declined in Gedo, Central, Hiran and Bakool but increased in Juba, Northwest and Middle Shabelle regions both in July and August.

**Labor (unskilled) wages** remained relatively stable in Northern and Central regions in July-August while they increased at mild to moderate rates in most southern regions except in Hiran, Bay and Lower Juba where wage rates declined in August. The latter could be attributed to increased labour supply in urban areas as a result of deteriorated security conditions and declined seasonal farm labour opportunities in rural areas of these regions. Annual comparison indicates mild to moderate increases in wage rates in most regions of the country in July and August. Notably, moderate decline in labour wages was recorded in Bay for both periods.

**Terms of Trade (ToT)** between daily labor wage and local cereals remained stable or changed by 1-4kg/daily labour wage month-on-month in July-August in most parts of the country; the highest increase was recorded in Shabelle regions (4kg/daily labour wage) due to decline in cereal prices and increase in labour wages. The ToT between local quality goat and cereals changed at mild rates (1-7%) in Northern, Central and Lower Juba regions in the same period while ToT increased in most southern regions; particularly high increase (42%) was recorded in Shabelle region in August due to decline in cereal prices following the *Gu* harvest. Annual comparison indicates relative stability or increase in ToT between daily labor wage and local cereals in most regions of the country, while ToT between local quality goat and cereals changed at mild to moderate rates across the country.



This Market Data Update is a monthly report that presents analysis of market information and is produced regularly as part of the monthly monitoring process.

The weekly price data is collected from 48 main markets and 51 rural markets throughout Somalia since 1995.

Market analysis is an integral part of all of FSNAU's annual food security projections and seasonal technical reports (Technical Reports on FSNAU Post *Gu* and Post *Deyr* Analysis).

Detailed market data are available online on [www.fsnau.org/ids](http://www.fsnau.org/ids).

### Towns Affected by Trade Disruption (Bulo Burto, Wajid and Hudur)

**Labor (unskilled) wages** remained stable in Bulo Burto in July/August month-on-month. In Hudur and Wajid, labour wages decreased in July, but increased in August. Annual comparison indicated a moderate increase in wage rates in Hudur (17-28%) due to increased economic activities as a result of relatively improved security conditions in the region compared to one year ago.

**Terms of Trade (ToT)** between daily labor wage and local cereals remained relatively stable month-on-month in all three markets. However, ToT between local quality goat and cereals declined as a result of reduced local quality goat prices. ToTs are higher compared to a year ago in Hudur due to decrease in cereal prices and/or increase in labor wages and goat prices.

**Local grains** prices declined mildly month-on-month in Wajid and Hudur but remained stable in Bulo-Burto; as *Gu* harvests entered the markets moderate price declines were recorded in August in Wajid (11%) and Hudur (17%). Significant price decline was noted in Bulo-Burto (26%) in August due to humanitarian food distribution and increased market supply of cereals from adjacent areas following the recent *Gu* harvest.

**Prices of imported food items** (rice, sugar, vegetable oil, wheat flour) remained relatively stable or declined (13-25%) month-on-month in July and August across the three markets due to humanitarian food distributions.

# National Trends: CPI, Exchange Rates, Cereal Prices and Relative Purchasing Power

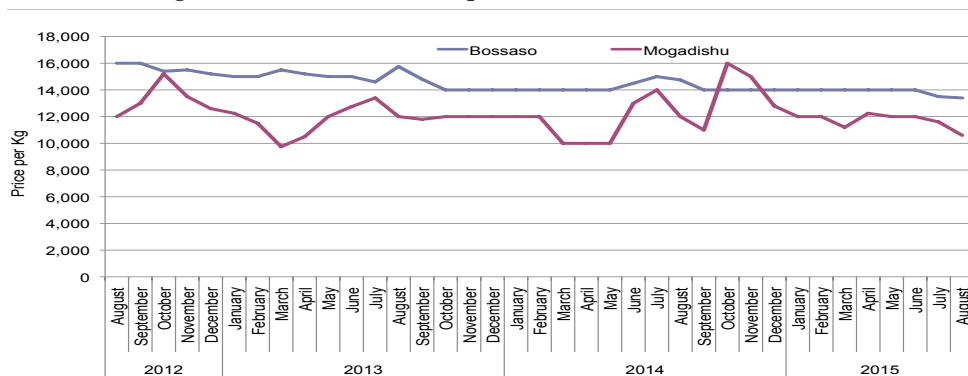
Table 1: ToT between Cereals (kg) and Daily Labour Wage Rate, by Region (July)

Regions	July 2015 (kg)	% change from		
		Jun-2015	Jul-2014	July 5 yr Average (2010 - 2014)
Banadir/Mogadishu	12	0%	-20%	0%
Bay	16	7%	23%	33%
Bakool	4	33%	33%	-20%
Gedo	15	7%	15%	15%
Juba	11	10%	57%	22%
Shabelle	8	14%	14%	14%
Northwest	10	0%	11%	25%
Northeast	9	0%	13%	50%
Central	5	0%	25%	67%

Table 2: ToT between Cereals (kg) and Daily Labour Wage Rate, by Region (August)

Regions	August 2015 (kg)	% change from		
		Jul-2015	Aug-2014	August 5 yr Average (2010 - 2014)
Banadir/Mogadishu	20	67%	33%	43%
Bay	14	-12%	0%	17%
Bakool	5	25%	50%	20%
Gedo	15	0%	25%	15%
Juba	10	-9%	25%	0%
Shabelle	12	50%	71%	33%
Northwest	10	0%	11%	43%
Northeast	9	0%	13%	50%
Central	5	0%	25%	67%

Figure 1: Wheat Prices: Mogadishu and Bossaso Markets



Source: FSNAU Mantest Price Monitoring System

Figure 2: Terms of Trade Between Wage Rates and Selected Cereals

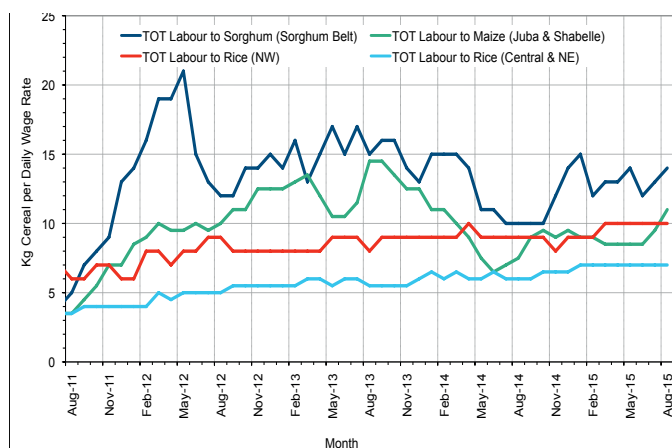


Figure 3: Monthly Exchange Rate for Selected Regions (SoSh and SiSh to USD)

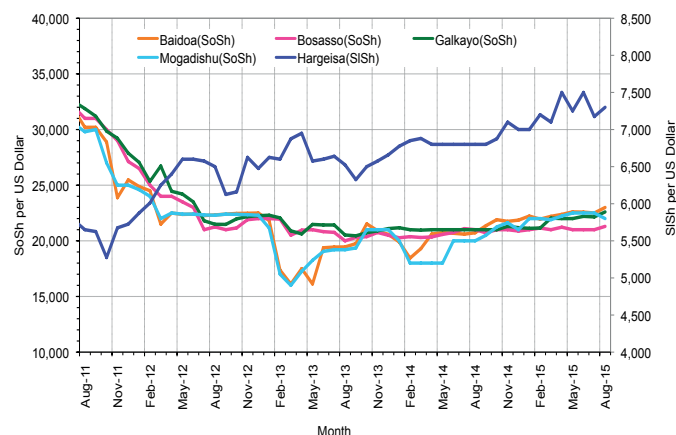


Figure 4: Monthly Trends in Consumer Price Index (CPI, March 2007=100)

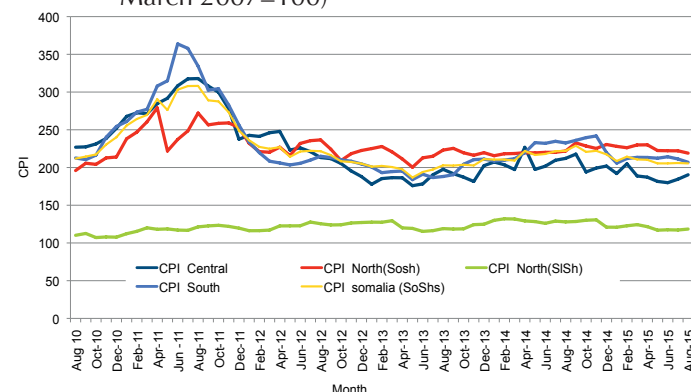
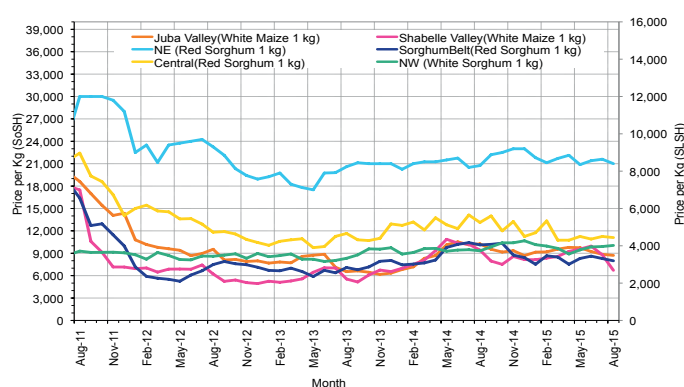


Figure 5: Monthly Trends in Local Cereal Prices



# Regional analysis: Juba Regions

Indicator	5-Year Average (2010-2014)	Aug-14	Jul-15	Aug-15 Nominal Price	Aug-15 Real (Deflated) Price	% Change Previous Month	% Change Same Month Previous Year	% Change 5-year avrg (2010-2014)
<b>Imported Commodities Prices</b>								
Diesel 1 litre	31,967	27,143	24,143	24,000	11,498	-1%	-12%	-25%
Imported Red Rice 1kg	19,221	15,607	15,000	14,929	7,115	0%	-4%	-22%
Petrol 1 litre	32,960	27,429	27,929	27,286	13,086	-2%	-1%	-17%
Sugar	23,392	16,143	15,571	15,286	7,287	-2%	-5%	-35%
Vegetable Oil 1 litre	40,511	33,036	29,143	29,286	14,053	0%	-11%	-28%
Wheat Flour 1kg	18,382	15,036	15,857	14,893	7,097	-6%	-1%	-19%
Wheat Grain 1kg	18,000	-	-	-	-	-	-	-
<b>Cereal Prices</b>								
Red Sorghum 1kg	7,700	8,000	8,500	8,600	4,056	1%	8%	12%
White Maize 1kg	10,417	10,229	8,911	8,939	4,220	0%	-13%	-14%
<b>Livestock &amp; Livestock Product Prices</b>								
Camel Local Quality (Head)	9,274,726	10,428,929	8,374,286	9,070,833	4,383,499	8%	-13%	-2%
Cattle Local Quality (Head)	3,715,680	4,455,833	3,728,929	3,859,143	1,864,882	3%	-13%	4%
Fresh Camel Milk 1 litre	16,732	15,786	17,143	15,821	7,546	-8%	0%	-5%
Goat Export Quality (Head)	1,403,057	1,432,786	1,237,500	1,257,214	607,465	2%	-12%	-10%
Goat Local Quality (Head)	926,119	996,286	810,536	820,179	396,262	1%	-18%	-11%
<b>Other Essential Items</b>								
Charcoal 50kg	78,992	89,821	86,071	81,429	39,252	-5%	-9%	3%
Cowpeas 1 kg	22,450	20,286	23,107	20,817	9,960	-10%	3%	-7%
Unskilled Labor Wage Rate	86,925	80,179	97,107	89,750	43,273	-8%	12%	3%
Firewood Bundle	8,800	11,643	7,143	7,143	3,352	0%	-39%	-19%
Local Sesame Oil 1 litre	75,291	78,357	73,286	68,286	32,900	-7%	-13%	-9%
Exchange Rate (Somali Shilling per USD)	24,807	20,486	22,339	22,582	10,813	1%	10%	-9%
<b>Terms of Trade</b>								
Labour Wage (Daily)/ Cereal (Maize(Kg))	10	8	11	10	-	-9%	25%	0%
Local Goat (Head)/ Cereal (Maize(Kg))	104	97	91	92	-	1%	-5%	-12%
<b>Price Indices</b>								
Consumer Price Index	-	233	211	207	-	-2%	-11%	-

Figure 6: Trends in Cereal Prices

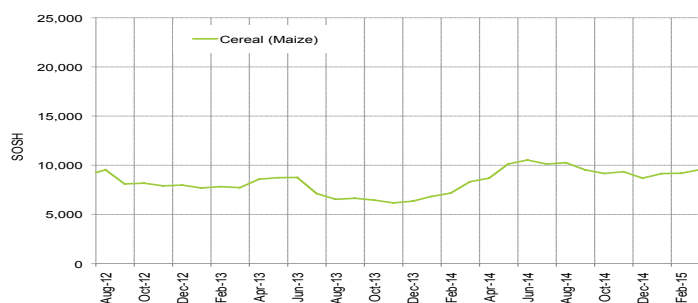


Figure 8: Imported Commodity Prices Compared to Exchange Rate

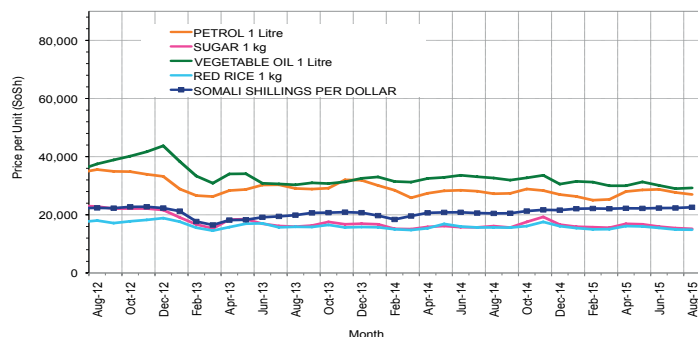


Figure 10: Exchange Rate

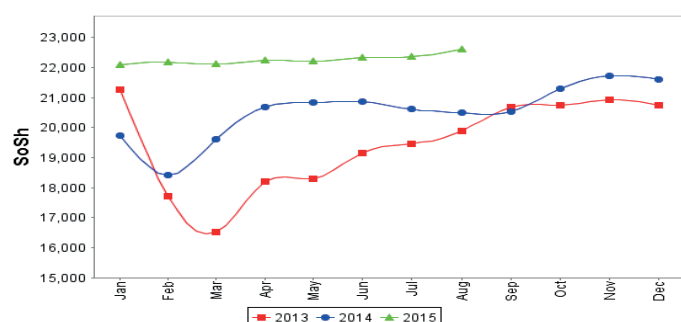


Figure 7: Trends in Wage Rates and Relative Purchasing Power

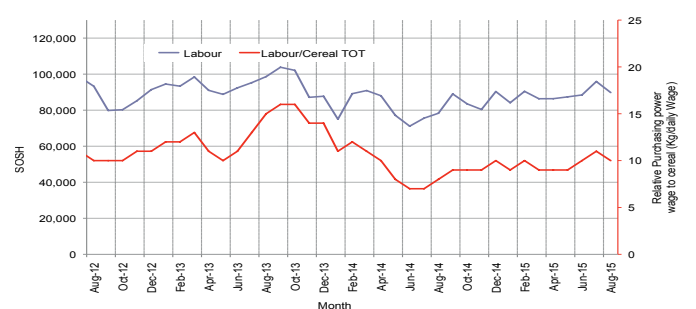


Figure 9: Goat Local Quality

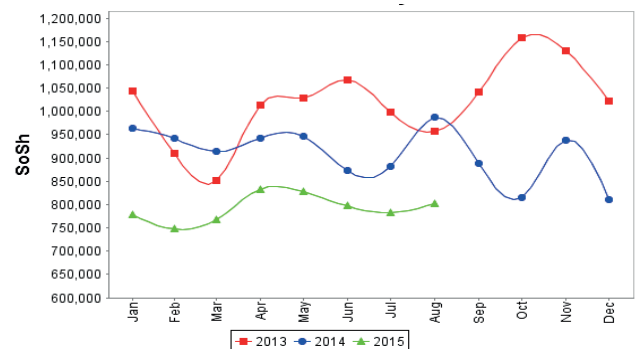
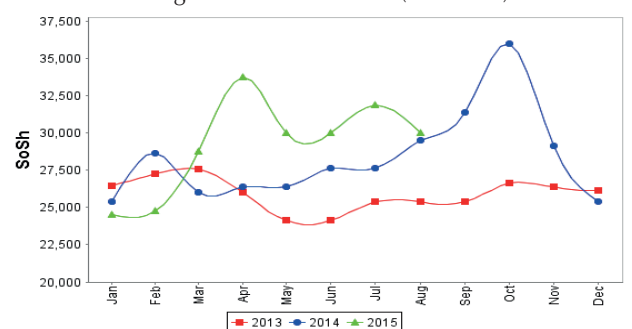


Figure 11: Water Drum (200 litres)



# Regional analysis: Sorghum Belt Regions (Bay, Bakool, Gedo and Hiran)

Indicator	5-Year Average (2010-2014)	Aug-14	Jul-15	Aug-15 Nominal Price	Aug-15 Real (Deflated) Price	% Change Previous Month	% Change Same Month Previous Year	% Change 5-year avrg (2010-2014)
<b>Imported Commodities Prices</b>								
Diesel 1 litre	33,595	30,966	28,964	28,536	13,690	-1%	-8%	-15%
Imported Red Rice 1kg	21,322	18,273	17,695	17,918	8,559	1%	-2%	-16%
Petrol 1 litre	32,761	31,045	29,518	29,218	14,020	-1%	-6%	-11%
Sugar	24,631	18,236	17,900	17,918	8,559	0%	-2%	-27%
Vegetable Oil 1 litre	46,333	39,432	34,864	33,918	16,291	-3%	-14%	-27%
Wheat Flour 1kg	19,548	17,318	17,573	17,455	8,335	-1%	1%	-11%
Wheat Grain 1kg	12,133	17,750	20,875	19,875	9,505	-5%	12%	64%
<b>Cereal Prices</b>								
Red Sorghum 1kg	9,775	10,120	8,291	7,989	3,761	-4%	-21%	-18%
White Maize 1kg	11,059	12,222	9,456	9,169	4,331	-3%	-25%	-17%
<b>Livestock &amp; Livestock Product Prices</b>								
Camel Local Quality (Head)	11,062,186	12,915,000	12,407,500	12,601,000	6,089,499	2%	-2%	14%
Cattle Local Quality (Head)	3,229,335	3,488,889	3,567,143	3,599,688	1,739,497	1%	3%	11%
Fresh Camel Milk 1 litre	22,232	22,275	16,755	16,670	7,956	-1%	-25%	-25%
Goat Export Quality (Head)	1,456,192	1,513,295	1,497,909	1,868,727	902,987	25%	23%	28%
Goat Local Quality (Head)	936,350	956,364	872,227	871,273	420,954	0%	-9%	-7%
<b>Other Essential Items</b>								
Charcoal 50kg	134,069	143,825	165,550	164,850	79,566	0%	15%	23%
Cowpeas 1 kg	24,976	26,027	25,505	25,214	12,085	-1%	-3%	1%
Unskilled Labor Wage Rate	95,827	101,545	108,023	108,182	52,180	0%	7%	13%
Firewood Bundle	6,002	6,602	6,777	6,582	3,081	-3%	0%	10%
Local Sesame Oil 1 litre	78,876	90,813	79,286	75,964	36,611	-4%	-16%	-4%
Exchange Rate (Somali Shilling per USD)	24,828	20,325	22,431	22,505	10,776	0%	11%	-9%
<b>Terms of Trade</b>								
Labour Wage (Daily)/ Cereal (Sorghum(Kg))	11	10	13	14	-	8%	40%	27%
Local Goat (Head)/ Cereal (Sorghum(Kg))	110	95	105	109	-	4%	15%	-1%
<b>Price Indices</b>								

Figure 12: Trends in Cereal Prices

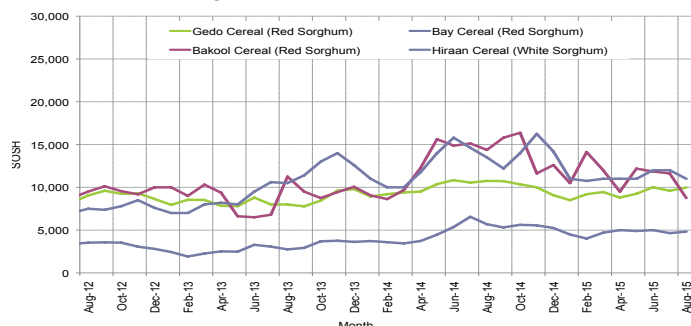


Figure 13: Trends in Wage Rates and Relative Purchasing Power

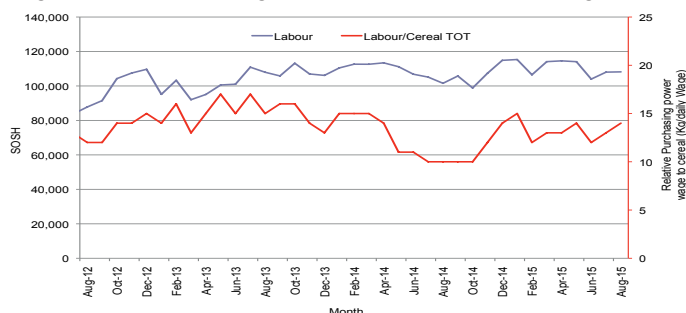


Figure 14: Imported Commodity Prices Compared to Exchange Rate

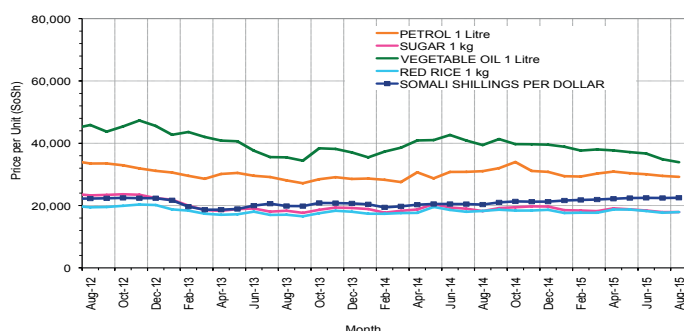


Figure 15: Goat Local Quality

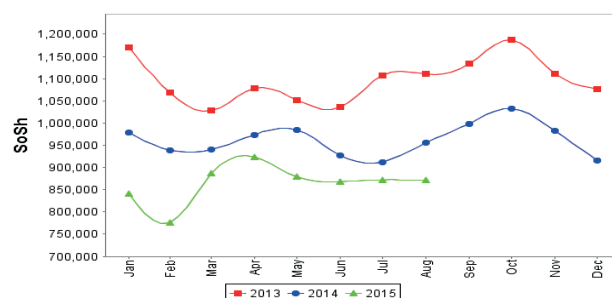


Figure 16: Exchange Rate

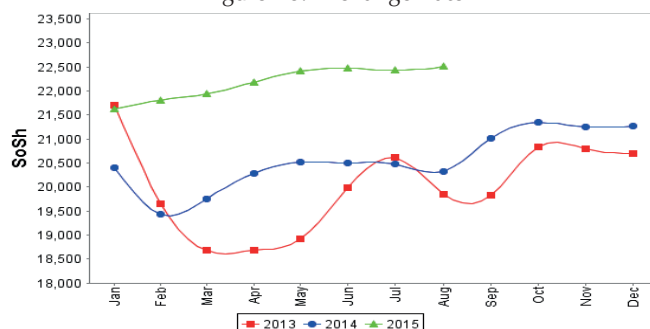
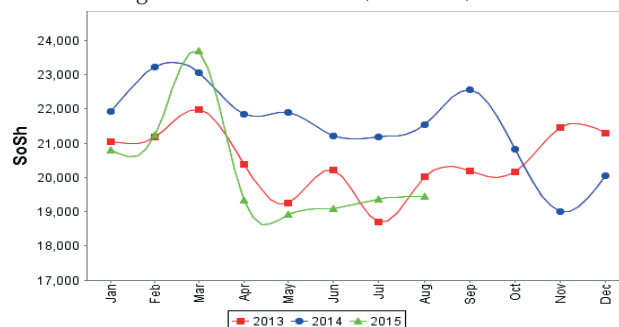


Figure 17: Water Drum (200 litres)



# Regional analysis: Shabelle Regions

Indicator	5-Year Average (2010-2014)	Aug-14	Jul-15	Aug-15 Nominal Price	Aug-15 Real (Deflated) Price	% Change Previous Month	% Change Same Month Previous Year	% Change 5-year avrg (2010-2014)
<b>Imported Commodities Prices</b>								
Diesel 1 litre	30,816	26,833	24,417	23,833	11,418	-2%	-11%	-23%
Imported Red Rice 1kg	18,883	15,917	16,333	15,167	7,230	-7%	-5%	-20%
Petrol 1 litre	31,383	29,125	28,083	28,042	13,452	0%	-4%	-11%
Sugar	23,325	16,417	17,500	15,833	7,552	-10%	-4%	-32%
Vegetable Oil 1 litre	36,300	27,167	27,500	27,500	13,190	0%	1%	-24%
Wheat Flour 1kg	18,041	16,000	16,917	15,958	7,612	-6%	0%	-12%
Wheat Grain 1kg	13,333	28,000	21,000	18,667	8,921	-11%	-33%	40%
<b>Cereal Prices</b>								
Red Sorghum 1kg	11,388	11,258	10,033	8,906	4,204	-11%	-21%	-22%
White Maize 1kg	8,996	9,422	8,793	6,713	3,144	-24%	-29%	-25%
<b>Livestock &amp; Livestock Product Prices</b>								
Camel Local Quality (Head)	14,823,501	16,605,000	17,982,500	18,605,000	8,991,011	3%	12%	26%
Cattle Local Quality (Head)	4,834,300	6,450,000	5,465,000	6,115,000	2,955,054	12%	-5%	26%
Fresh Camel Milk 1 litre	18,037	17,833	19,500	18,417	8,800	-6%	3%	2%
Goat Export Quality (Head)	1,713,500	1,954,375	1,938,750	2,103,500	1,016,444	8%	8%	23%
Goat Local Quality (Head)	1,218,083	1,386,250	1,341,250	1,344,167	649,486	0%	-3%	10%
<b>Other Essential Items</b>								
Charcoal 50kg	116,425	121,717	168,042	133,472	64,402	-21%	10%	15%
Cowpeas 1 kg	23,898	20,450	20,433	18,406	8,795	-10%	-10%	-23%
Unskilled Labor Wage Rate	67,425	66,167	70,208	78,125	37,655	11%	18%	16%
Firewood Bundle	5,425	5,000	7,500	8,333	3,927	11%	67%	54%
Local Sesame Oil 1 litre	62,585	72,050	60,083	54,833	26,399	-9%	-24%	-12%
Exchange Rate (Somali Shilling per USD)	24,892	20,833	22,425	22,425	10,737	0%	8%	-10%
<b>Terms of Trade</b>								
Labour Wage (Daily)/ Cereal (Maize(Kg))	9	7	8	12	-	50%	71%	33%
Local Goat (Head)/ Cereal (Maize(Kg))	164	147	153	200	-	31%	36%	22%
<b>Price Indices</b>								
Consumer Price Index		222	244	227		20%	44%	

Figure 18: Trends in Cereal Prices

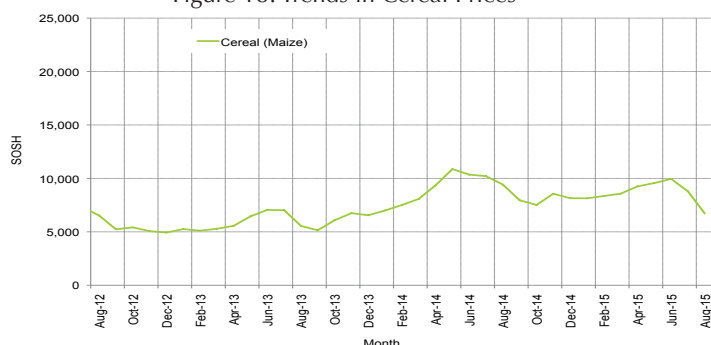


Figure 19: Trends in Wage Rates and Relative Purchasing Power

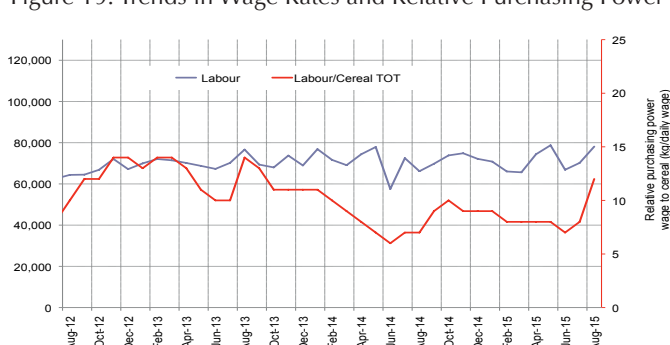


Figure 20: Imported Commodity Prices Compared to Exchange Rate

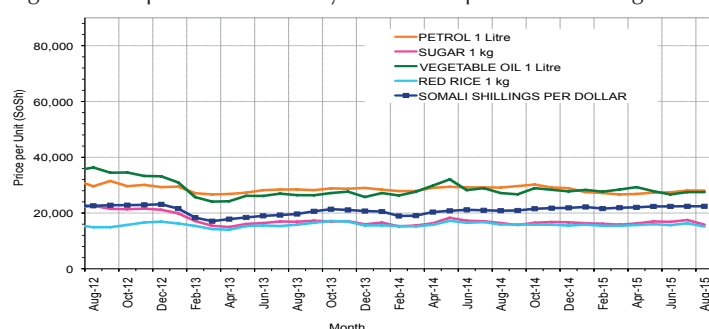


Figure 22: Exchange Rate

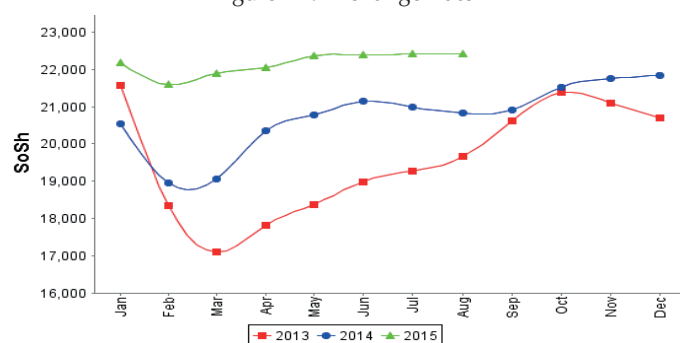


Figure 21: Goat Local Quality

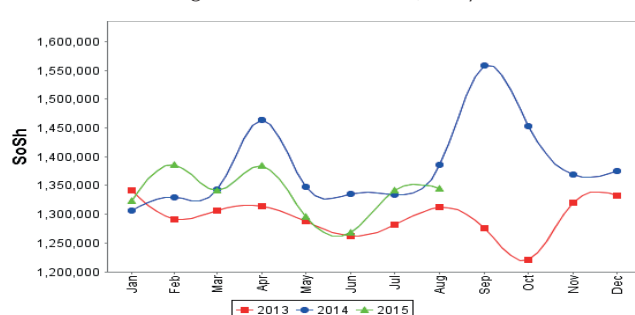
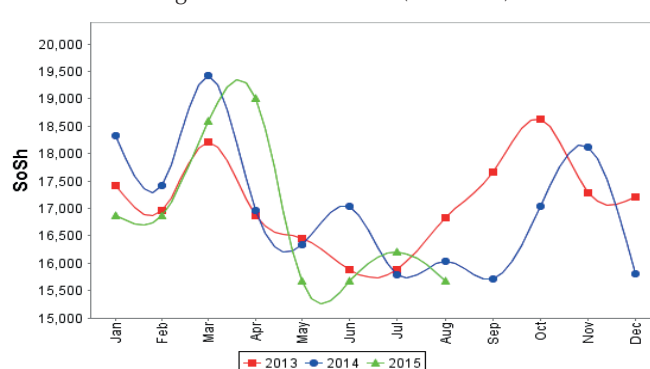


Figure 23: Water Drum (200 litres)





# Regional analysis: Banadir Region

Indicator	5-Year Average (2010-2014)	Aug-14	Jul-15	Aug-15 Nominal Price	Aug-15 Real (Deflated) Price	% Change Previous Month	% Change Same Month Previous Year	% Change 5-year avrg (2010-2014)
<b>Imported Commodities Prices</b>								
Diesel 1 litre	26,675	21,833	17,208	16,933	8,083	-2%	-22%	-37%
Imported Red Rice 1kg	16,909	12,813	12,500	12,483	5,933	0%	-3%	-26%
Petrol 1 litre	25,766	20,958	20,250	20,900	10,000	3%	0%	-19%
Sugar	21,611	14,000	13,625	13,300	6,327	-2%	-5%	-38%
Vegetable Oil 1 litre	34,451	24,313	22,833	22,633	10,838	-1%	-7%	-34%
Wheat Flour 1kg	15,415	12,313	12,350	11,983	5,691	-3%	-3%	-22%
Wheat Grain 1kg	11,363	10,333	12,750	13,400	6,376	5%	30%	18%
<b>Cereal Prices</b>								
Red Sorghum 1kg	9,549	8,483	8,225	7,867	3,702	-4%	-7%	-18%
White Maize 1kg	11,512	12,121	10,388	8,963	4,231	-14%	-26%	-22%
<b>Livestock &amp; Livestock Product Prices</b>								
Camel Local Quality (Head)	13,850,000	-	-	-	-	-	-	-
Cattle Local Quality (Head)	4,330,000	-	-	-	-	-	-	-
Fresh Camel Milk 1 litre	20,853	21,458	21,667	22,833	10,934	5%	6%	9%
Goat Export Quality (Head)	2,230,000	-	2,000,000	2,060,000	995,422	3%	-	-8%
Goat Local Quality (Head)	1,981,250	2,395,000	1,706,250	1,620,000	782,786	-5%	-32%	-18%
<b>Other Essential Items</b>								
Charcoal 50kg	170,904	193,167	201,083	196,633	94,925	-2%	2%	15%
Cowpeas 1 kg	25,363	21,138	21,133	20,700	9,904	-2%	-2%	-18%
Unskilled Labor Wage Rate	94,369	100,833	100,000	102,667	49,515	3%	2%	9%
Firewood Bundle	6,854	8,200	8,000	8,000	3,766	0%	-2%	17%
Local Sesame Oil 1 litre	62,766	71,500	57,417	55,167	26,560	-4%	-23%	-12%
Exchange Rate (Somali Shilling per USD)	24,767	20,588	22,367	22,320	10,686	0%	8%	-10%
<b>Terms of Trade</b>								
Labour Wage (Daily)/ Cereal (Maize(Kg))	9	8	10	11	-	10%	38%	22%
Local Goat (Head)/ Cereal (Maize(Kg))	203	198	164	181	-	10%	-9%	-11%
<b>Price Indices</b>								
Consumer Price Index	-	233	211	207	-	-2%	-11%	-

Figure 24: Trends in Cereal Prices

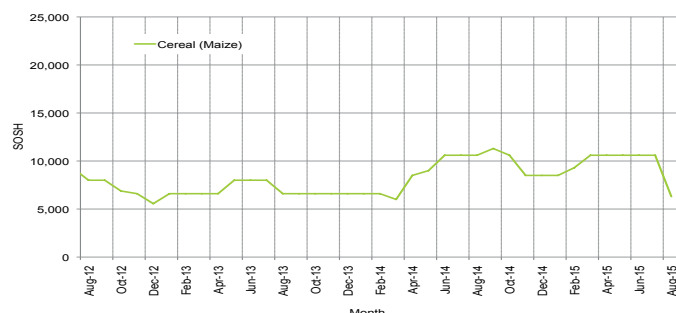


Figure 25: Bakara: Trends in Wage Rates and Relative Purchasing Power

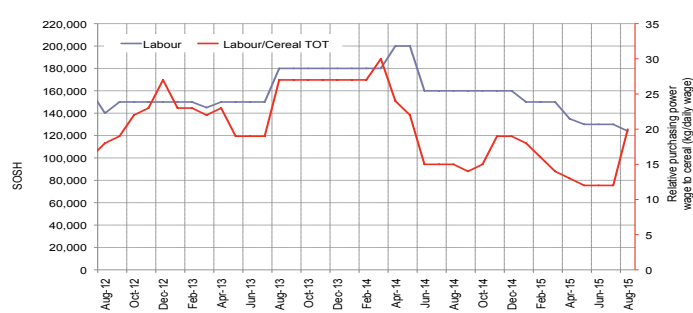


Figure 26: Imported Commodity Prices Compared to Exchange Rate

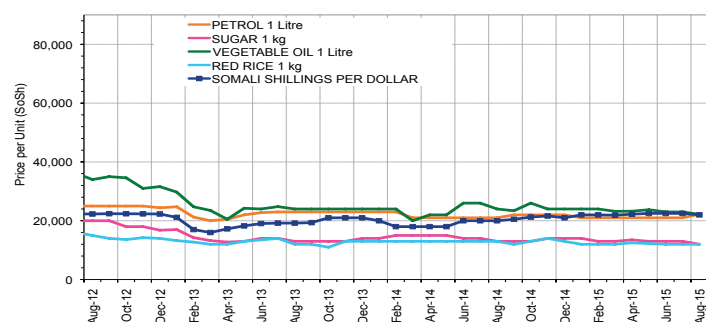


Figure 27: Goat Local Quality

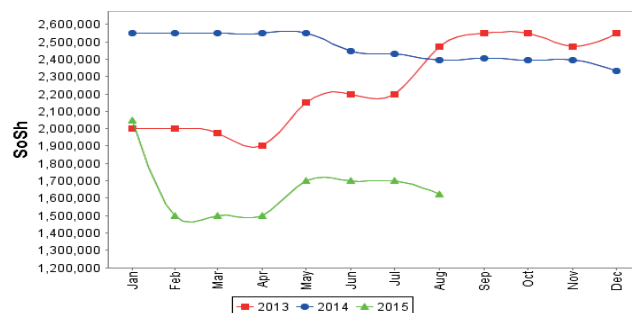


Figure 28: Exchange Rate

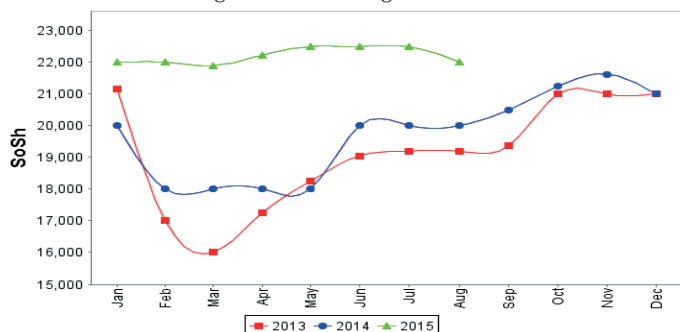
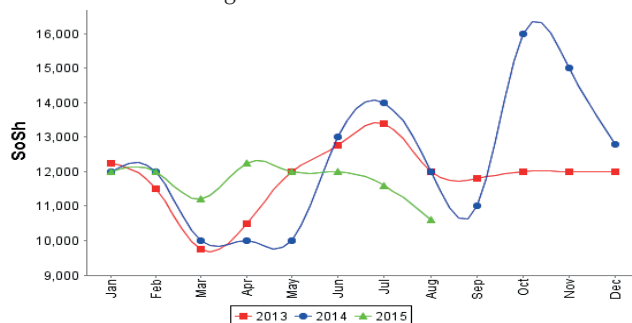


Figure 29: Wheat Flour



# Regional analysis: Central Regions

Indicator	5-Year Average (2010-2014)	Aug-14	Jul-15	Aug-15 Nominal Price	Aug-15 Real (Deflated) Price	% Change Previous Month	% Change Same Month Previous Year	% Change 5-year avrg (2010-2014)
<b>Imported Commodities Prices</b>								
Diesel 1 litre	31,994	28,250	23,700	25,400	13,243	7%	-10%	-21%
Imported Red Rice 1kg	23,862	18,200	17,150	17,000	8,830	-1%	-7%	-29%
Petrol 1 litre	28,706	25,700	22,550	24,000	12,507	6%	-7%	-16%
Sugar	27,926	20,650	18,550	18,560	9,650	0%	-10%	-34%
Vegetable Oil 1 litre	49,880	43,500	37,000	36,320	18,979	-2%	-17%	-27%
Wheat Flour 1kg	19,686	16,900	15,600	15,360	7,969	-2%	-9%	-22%
Wheat Grain 1kg	16,321	14,625	17,000	17,350	9,014	2%	19%	6%
<b>Cereal Prices</b>								
Red Sorghum 1kg	14,202	13,125	11,250	11,100	5,731	-1%	-15%	-22%
White Maize 1kg	14,744	13,333	13,875	13,120	6,792	-5%	-2%	-11%
<b>Livestock &amp; Livestock Product Prices</b>								
Camel Local Quality (Head)	9,683,750	10,918,750	12,812,500	12,725,000	6,684,344	-1%	17%	31%
Cattle Local Quality (Head)	2,600,000	3,000,000		-	100	-	-	-100%
Fresh Camel Milk 1 litre	35,104	32,400	27,900	31,800	16,605	14%	-2%	-9%
Goat Export Quality (Head)	1,396,733	1,317,500	1,141,250	1,150,500	604,258	1%	-13%	-18%
Goat Local Quality (Head)	1,037,320	972,500	932,500	858,000	450,607	-8%	-12%	-17%
<b>Other Essential Items</b>								
Charcoal 50kg	179,160	169,000	154,000	150,800	79,115	-2%	-11%	-16%
Cowpeas 1 kg	30,242	23,350	22,350	22,000	11,457	-2%	-6%	-27%
Unskilled Labor Wage Rate	86,640	81,000	89,000	89,000	46,652	0%	10%	3%
Firewood Bundle	31,915	32,000	32,200	34,000	17,760	6%	6%	7%
Local Sesame Oil 1 litre	92,540	91,200	90,250	90,000	47,177	0%	-1%	-3%
Exchange Rate (Somali Shilling per USD)	25,396	20,800	21,990	22,020	11,467	0%	6%	-13%
<b>Terms of Trade</b>								
Labour Wage (Daily)/ Cereal (Rice(Kg))	3	4	5	5	-	0%	25%	67%
Local Goat (Head)/ Cereal (Rice(Kg))	46	53	54	50	-	-7%	-6%	9%
Camel (Head)/Cereal (Kg)	439	600	747	749	-	0%	25%	71%
<b>Price Indices</b>								
Consumer Price Index	-	212	184	190	-	3%	-10%	-

Figure 30: Trends in Cereal Prices

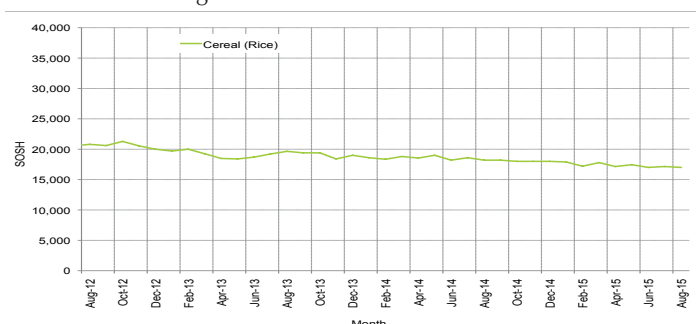


Figure 31: Trends in wage rates and relative purchasing power

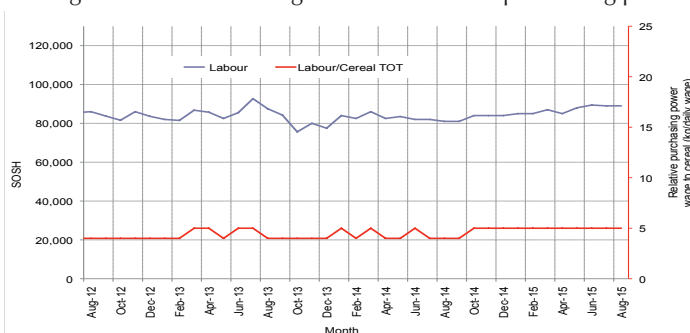


Figure 32: Imported Commodity Prices Compared to Exchange Rate

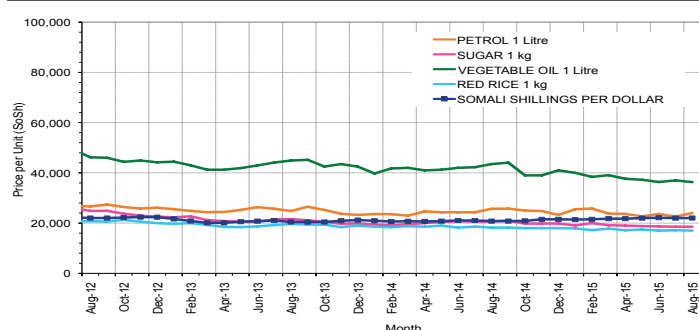


Figure 33: Goat Local Quality

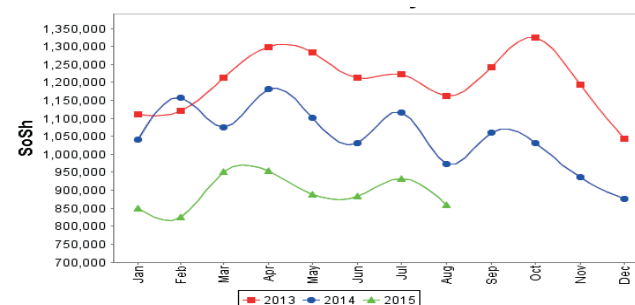


Figure 34: Exchange Rate

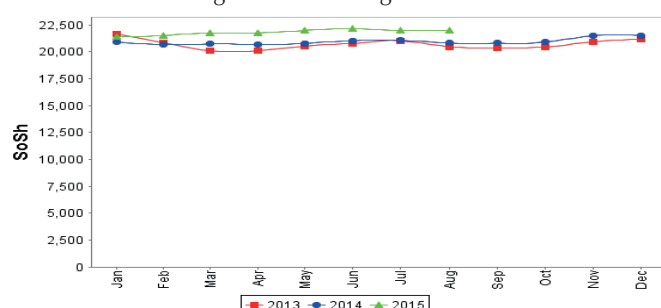
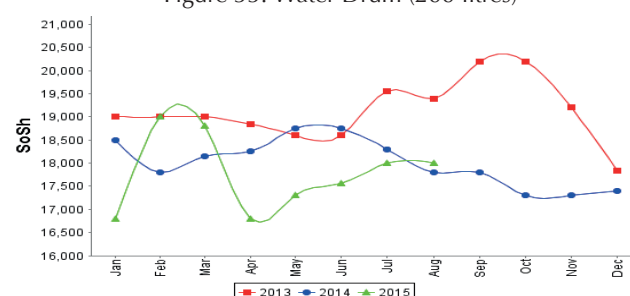


Figure 35: Water Drum (200 litres)



# Regional analysis: Northeast Regions

Indicator	5-Year Average (2010-2014)	Aug-14	Jul-15	Aug-15 Nominal Price	Aug-15 Real (Deflated) Price	% Change Previous Month	% Change Same Month Previous Year	% Change 5-year avrg (2010-2014)
<b>Imported Commodities Prices</b>								
Diesel 1 litre	28,182	23,375	18,575	18,125	8,176	-2%	-22%	-36%
Imported Red Rice 1kg	19,915	15,938	14,725	14,800	6,658	1%	-7%	-26%
Petrol 1 litre	25,417	20,438	20,338	20,269	9,155	0%	-1%	-20%
Sugar	25,052	17,688	16,513	16,200	7,297	-2%	-8%	-35%
Vegetable Oil 1 litre	43,637	33,375	32,675	33,250	15,083	2%	0%	-24%
Wheat Flour 1kg	18,295	15,188	14,375	14,150	6,361	-2%	-7%	-23%
Wheat Grain 1kg	27,555	22,500	22,000	21,750	9,832	-1%	-3%	-21%
<b>Cereal Prices</b>								
Red Sorghum 1kg	21,730	20,750	21,600	21,000	9,489	-3%	1%	-3%
White Maize 1kg	20,326	19,000	20,800	19,500	8,804	-6%	3%	-4%
<b>Livestock &amp; Livestock Product Prices</b>								
Camel Local Quality (Head)	14,427,000	15,675,000	14,810,250	15,198,750	6,939,989	3%	-3%	5%
Cattle Local Quality (Head)	7,200,000	8,375,000	8,500,000	8,800,000	4,018,177	4%	5%	22%
Fresh Camel Milk 1 litre	39,490	35,063	34,946	37,717	17,122	8%	8%	-4%
Goat Export Quality (Head)	1,423,066	1,537,500	1,387,500	1,440,000	657,436	4%	-6%	1%
Goat Local Quality (Head)	1,310,450	1,442,500	1,286,125	1,299,688	593,367	1%	-10%	-1%
<b>Other Essential Items</b>								
Charcoal 50kg	349,050	384,375	373,375	372,875	170,163	0%	-3%	7%
Cowpeas 1 kg	38,190	29,000	27,800	28,200	12,777	1%	-3%	-26%
Unskilled Labor Wage Rate	120,180	130,000	128,438	128,250	58,462	0%	-1%	7%
Firewood Bundle	41,492	46,875	50,000	43,250	19,649	-14%	-8%	4%
Local Sesame Oil 1 litre	90,025	96,563	90,425	96,250	43,850	6%	0%	7%
Exchange Rate (Somali Shilling per USD)	25,127	21,019	21,265	21,113	9,541	-1%	0%	-16%
<b>Terms of Trade</b>								
Labour Wage (Daily)/ Cereal (Rice(Kg))	6	8	9	9	-	0%	13%	50%
Local Goat (Head)/ Cereal (Rice(Kg))	69	91	87	88	-	1%	-3%	28%
<b>Price Indices</b>								
Consumer Price Index	-	222	222	219	-	-1%	-1%	-

Figure 36: Trends in Cereal Prices

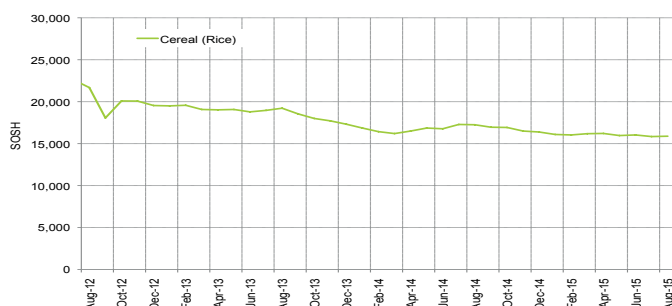


Figure 38: Imported Commodity Prices Compared to Exchange Rate

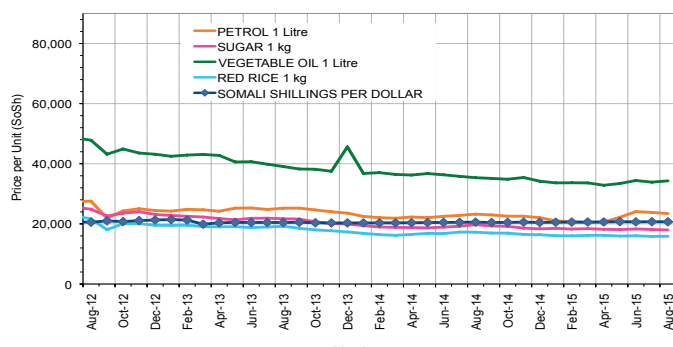


Figure 40: Exchange Rate

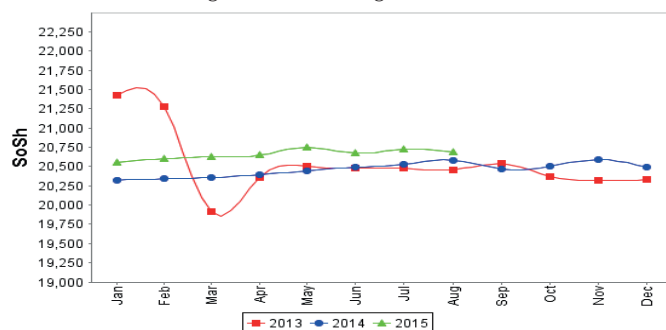


Figure 37: Trends in Wage Rates and Relative Purchasing Power

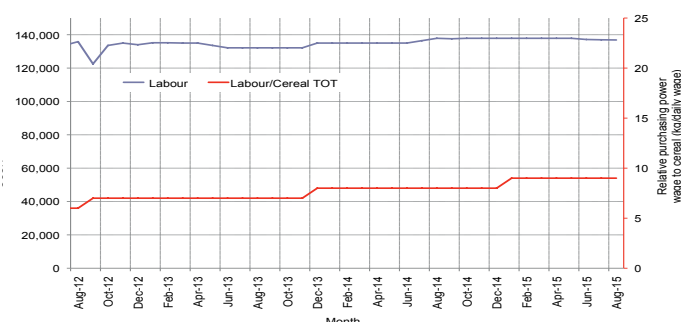


Figure 39: Goat Local Quality

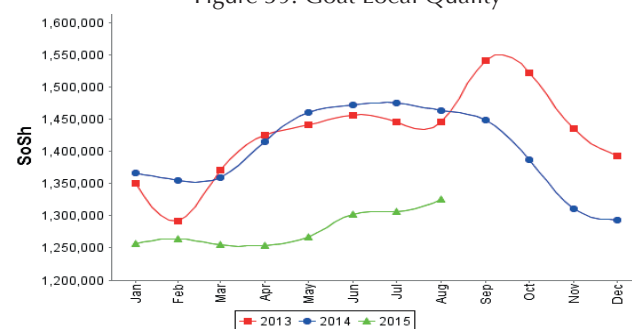
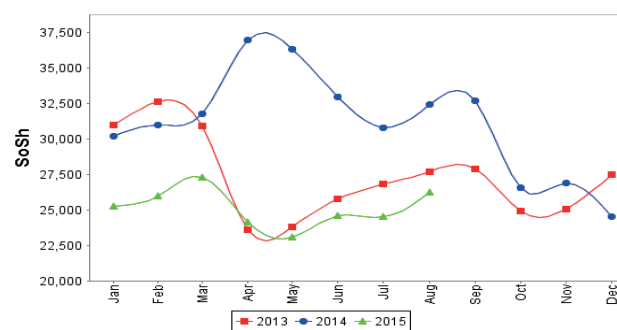


Figure 41: Water Drum (200 litres)





# Regional analysis: Northwest Regions

Indicator	5-Year Average (2010-2014)	Aug-14	Jul-15	Aug-15 Nominal Price	Aug-15 Real (Deflated) Price	% Change Previous Month	% Change Same Month Previous Year	% Change 5-year avrg (2010-2014)
<b>Imported Commodities Prices</b>								
Diesel 1 litre	6,607	6,880	6,645	6,560	5,440	-1%	-5%	-1%
Imported Red Rice 1kg	4,933	5,095	5,020	5,020	4,139	0%	-1%	2%
Petrol 1 litre	6,918	7,280	7,865	7,580	6,301	-4%	4%	10%
Sugar	6,061	5,740	5,900	6,000	4,967	2%	5%	-1%
Vegetable Oil 1 litre	11,647	12,613	12,800	12,500	10,456	-2%	-1%	7%
Wheat Flour 1kg	4,385	4,380	4,580	4,680	3,852	2%	7%	7%
Wheat Grain 1kg	3,460	3,575	4,313	3,790	3,100	-12%	6%	10%
<b>Cereal Prices</b>								
White Sorghum 1kg	3,351	3,730	3,960	4,020	3,295	2%	8%	20%
Yellow Maize 1kg	3,524	3,606	3,788	3,750	3,067	-1%	4%	6%
<b>Livestock &amp; Livestock Product Prices</b>								
Camel Local Quality (Head)	2,939,991	4,325,000	4,617,500	4,453,333	3,760,548	-4%	3%	51%
Cattle Local Quality (Head)	1,948,283	2,647,500	2,570,000	2,304,600	1,946,035	-10%	-13%	18%
Fresh Camel Milk 1 litre	5,515	5,700	6,400	6,500	5,389	2%	14%	18%
Goat Export Quality (Head)	398,422	472,860	439,050	442,325	373,424	1%	-6%	11%
Goat Local Quality (Head)	293,415	358,850	344,600	373,555	315,351	8%	4%	27%
<b>Other Essential Items</b>								
Charcoal 50kg	41,790	51,100	54,000	53,310	44,918	-1%	4%	28%
Cowpeas 1 kg	9,405	10,113	10,750	10,750	8,978	0%	6%	14%
Unskilled Labor Wage Rate	38,866	47,000	51,950	51,950	43,770	0%	11%	34%
Firewood Bundle	3,019	3,833	4,333	4,500	3,700	4%	17%	49%
Local Sesame Oil 1 litre	27,450	35,250	34,438	34,000	28,612	-1%	-4%	24%
Exchange Rate (Somaliland Shilling per USD)	6,480	6,830	7,435	7,484	6,220	1%	10%	15%
<b>Terms of Trade</b>								
Labour Wage (Daily)/ Cereal (Rice(Kg))	7	9	10	10	-	0%	11%	43%
Local Goat (Head)/ Cereal (Rice(Kg))	59	70	69	74	-	7%	6%	25%
<b>Price Indices</b>								
Consumer Price Index	-	128	117	118	-	1%	-7%	-

Figure 42: Trends in Cereal Prices

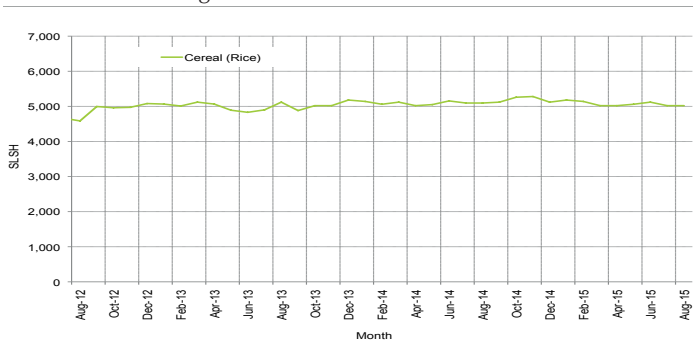


Figure 43: Trends in Wage Rates and Relative Purchasing Power

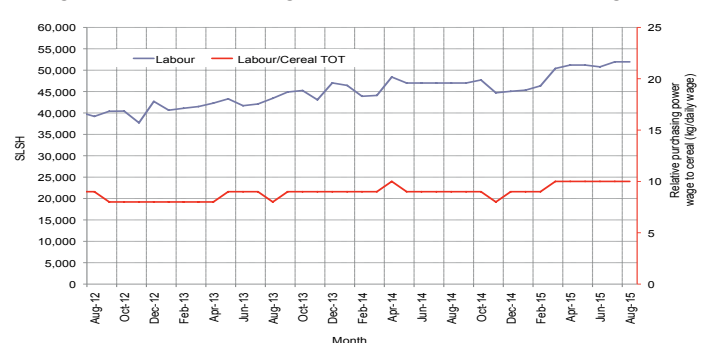


Figure 44: Imported Commodity Prices Compared to Exchange Rate

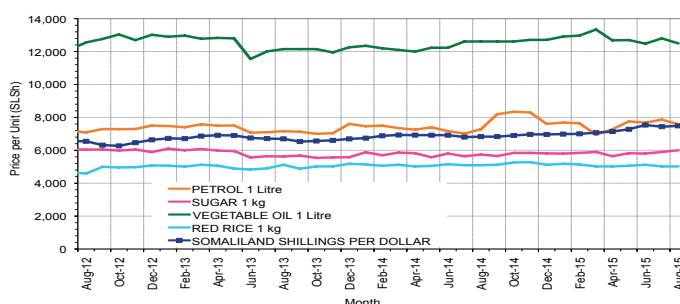


Figure 45: Goat Local Quality

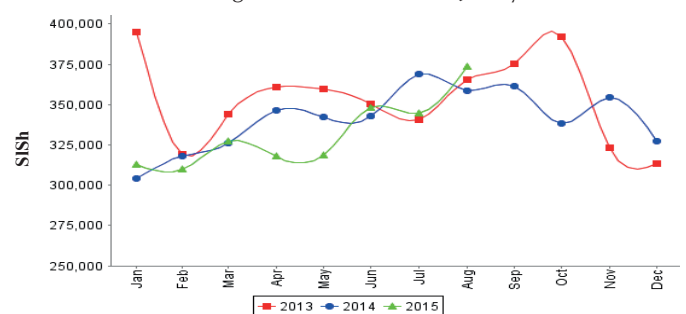


Figure 46: Exchange Rate

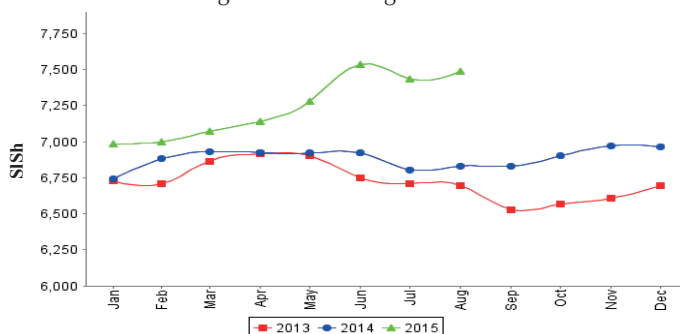
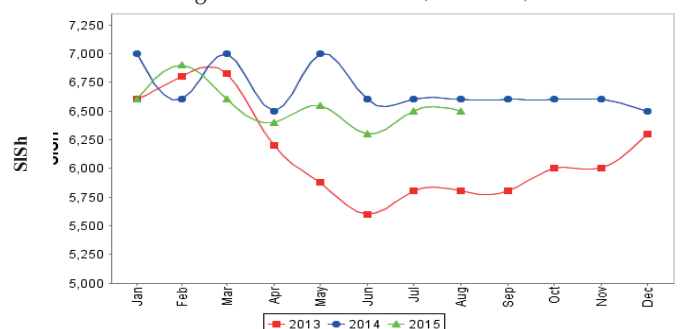


Figure 47: Water Drum (200 litres)



# Trends in Livestock Exports

Table 1: Berbera Livestock Exports (Number of Heads)

	1999	2000	2001	2002	2003	2004	2005	2006	2007	2008	2009	2010	2011	2012	2013	2014	Jan-Jun 2015
Shoats	2,048,136	1,601,083	51,546	341,711	563,107	859,404	1,023,795	1,017,242	1,350,054	1,219,519	1,556,003	2,584,810	3,104,684	3,219,584	2,888,955	3,089,592	1,52,399
Cattle	89,967	63,263	20,973	37,547	84,312	131,852	148,151	85,631	88,143	80,051	88,005	133,021	150,934	190,354	20,875	252,597	79,404
Camel	37,430	16,984	3,473	18,864	21,874	5,147	5,069	22,810	14,245	26,515	20,206	92,651	107,281	102,664	75,728	64,578	48,009

Figure 48: Berbera Livestock Exports (Number of Heads)

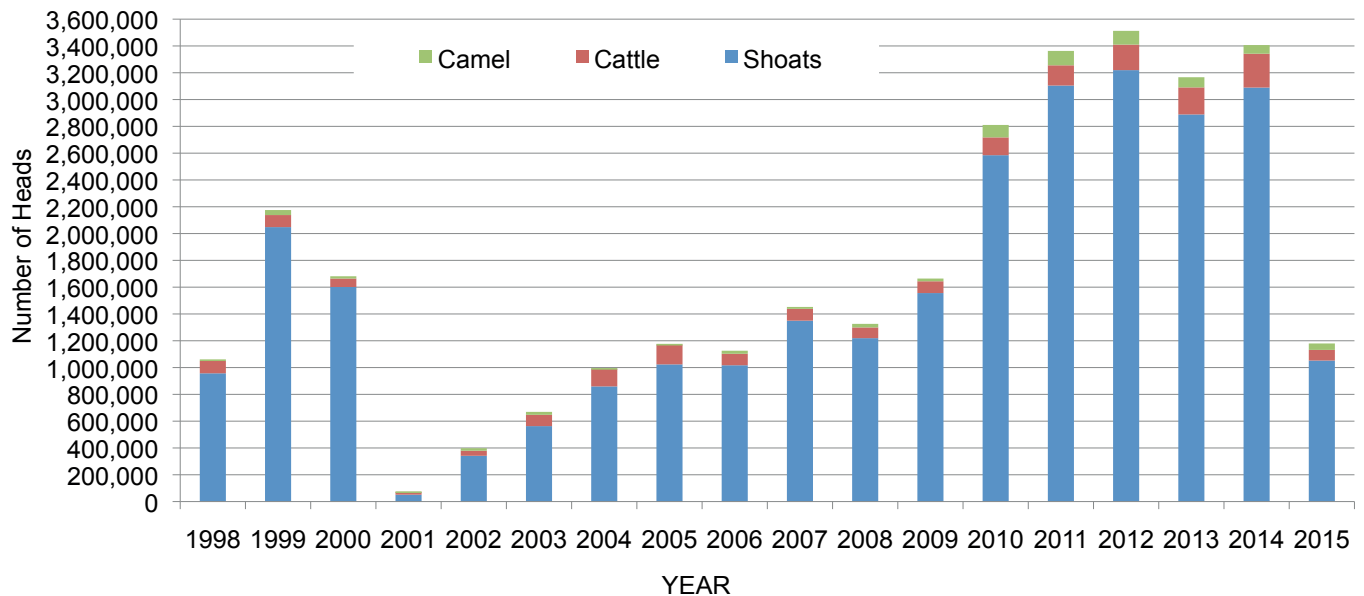
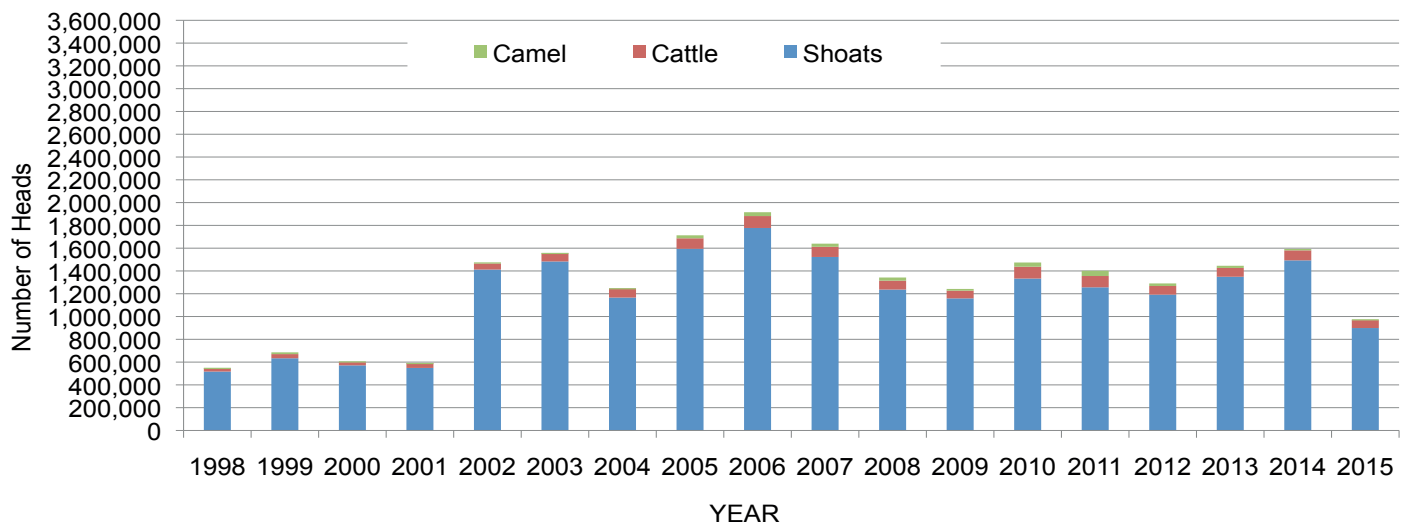


Table 2: Bossaso Livestock Exports (Number of Heads)

	1999	2000	2001	2002	2003	2004	2005	2006	2007	2008	2009	2010	2011	2012	2013	2014	Jan-Jul 2015
Shoats	633,669	571,455	548,853	1,412,450	1,483,409	1,166,480	1,594,859	1,777,283	1,522,855	1,236,775	1,159,454	1,333,478	1,256,535	1,192,197	1,349,123	1,493,111	898,944
Cattle	36,586	27,604	42,248	53,313	71,328	79,994	91,910	104,595	89,190	78,046	67,385	103,808	99,058	76,043	77,353	87,759	69,578
Camel	15,544	8,177	1,950	9,720	4,259	2,488	26,109	33,724	27,580	27,639	15,331	36,865	45,878	22,288	19,032	12,251	8,021

Figure 49: Bossaso Livestock Exports (Number of Heads)

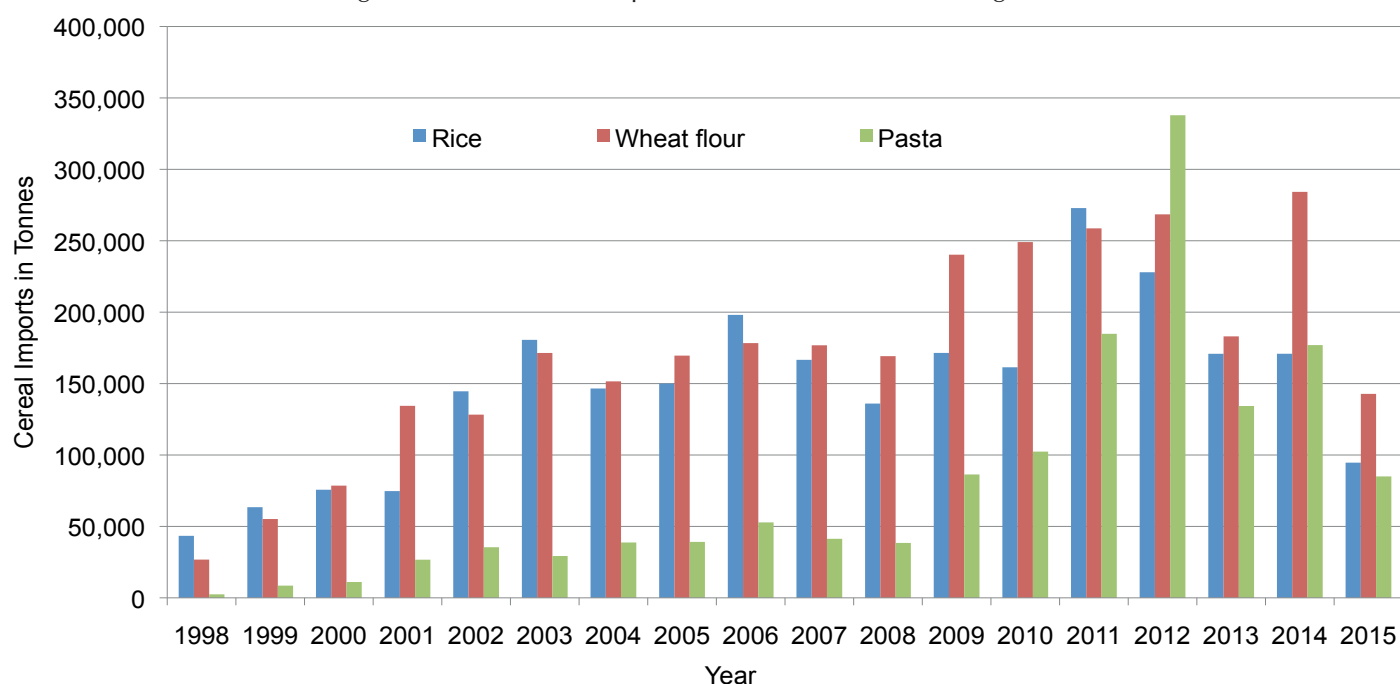


# Trends in Cereal Imports

Table 3: Total Cereal Imports through Berbera, Bossaso and Mogadishu Ports (Tonnes) \*

	1999	2000	2001	2002	2003	2004	2005	2006	2007	2008	2009	2010	2011	2012	2013	2014	Jan-Jul 2015
<b>Rice</b>	63,464	75,687	74,729	144,600	180,614	146,567	150,017	198,101	166,626	136,007	171,472	161,415	272,877	227,955	170,868	170,495	94,643
<b>Wheat flour</b>	55,176	78,555	134,425	128,263	171,442	151,555	169,583	178,345	176,821	169,208	240,247	249,080	258,679	268,491	183,058	273,211	142,803
<b>Pasta</b>	8,544	11,071	26,702	35,425	29,273	38,749	39,153	52,815	41,331	38,441	86,372	102,373	184,849	337,878	134,311	164,989	85,000

Figure 50: Total Cereal Imports (Berbera, Bossaso and Mogadishu)



\* Bosasso import data is up to July 2015, Berbera data is up to June 2015 and Elman (Mogadishu) is up to April 2015. Mogadishu data (Elmaan Port) for 2013 includes only January -March imports.