

Market DataUpdate



Food Security and Nutrition
Analysis Unit - Somalia



August 2014 (Issued September 19, 2014)

Highlights

Inflation: The Consumer Price Index (CPI) changed marginally month-on-month in August 2014 across the country. It increased by one percent in Northeast and Central zones but decreased by one percent in Northwest and the South. Inflation rose year-on-year in most parts of the country. The rise was most significant in southern zone (by 24%) followed by Central and Northwest zones (by 7% each). Compared to the base period (March 2007), the CPI increased significantly in Somaliland shilling (SISh) areas (28%) as well as in Somali shilling (SoSh) areas (112-133%).

Exchange rate: The exchange rates between local currencies (SoSh and SISh) and the United States Dollar (USD) remained stable in August 2014 in the South, but changed marginally month-on-month in North (1%) and Central (-1%). Compared to a year ago (August 2013), the rates remained stable in the North but depreciated marginally (2-3%) in South-Central. Compared to the five-year average (August 2009-2013), the SoSh shows a strong gain in value. Conversely, the SISh depreciated marginally in the same period of comparison.

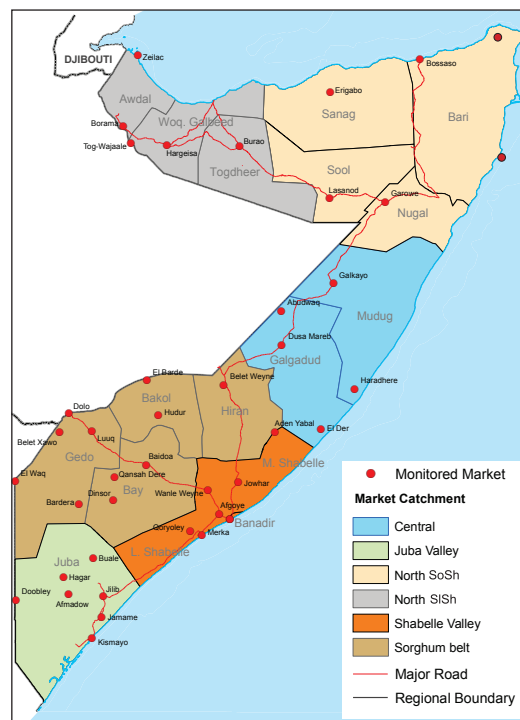
Local grain: Following the *Gu* harvest, prices decreased at mild rates in August in most markets with the exception of Bay and Middle Shabelle regions where the prices decreased moderately (by 12-13%). The prices increased marginally in Northeast and parts of the South (Lower Juba and Gedo) and remained stable in Mogadishu's main Bakara market. Annual comparison indicates increase in cereal prices across the country, with particularly high increases noted in southern regions. The highest annual price increase (by 107%) was recorded in the Bay region. Compared to five-year average levels, local grain prices were relatively stable in August in the Central, Northern SoSh, Gedo, Bay and Juba regions, while they rose at moderate to high levels in most of the remaining regions of the country. Most significant increase was recorded in Bakool (by 46%), which was exacerbated by continued trade disruptions in the region.

Prices of imported food (rice, sugar, vegetable oil & wheat flour) as quoted in local currency exhibited mild monthly changes (less than 10%) in the month of August in most regions with the exception of Banadir where moderate decline (14%) was recorded for wheat flour price. Year-on-year comparison generally indicated mixed trend patterns across the country. Specifically, prices were relatively stable or changed at mild rates in Northwest, Hiran, Central, Juba, Banadir, Gedo and Shabelle regions for most food imports; they declined moderately (10-11%) in Northeast regions and increased moderately in Bay. Compared to the five-year average, the prices are lower for most food imports across the country.

Livestock prices (for all species) showed mild monthly changes in most regions in the month of August. Milk prices (cattle and camel) showed mixed trend patterns across the country. Specifically, milk prices remained relatively stable or changed at mild rates across the country, except in Bay region where milk prices increased moderately. Annual comparisons indicate declines in values of livestock (local quality goat) in Central and parts of Northwest and the Sorghum Belt but remained stable or increased at mild rates in other regions. Milk prices rose at moderate to significant rates; the highest increase (by 109%) was recorded in Bakool region (for camel milk). Compared to five-year average levels of August, livestock prices showed moderate to high (21%-79%) increases, particularly for the big ruminants (cattle and camel); milk price trends showed mixed patterns across the country.

Labor wages (unskilled) remained relatively stable in Juba, Central and Northern regions, but declined moderately in Bay, Banadir, Gedo and Shabelle regions in August. Conversely, labour wage rates increased significantly (by 45%) in Bakool, which is driven by increased activities as a result of recently improved security situation. Labor wages showed annual declines for the month of August in most regions, except in Bay, Hiran and the Northern regions where increases were observed. The labor wage rates were higher than their five-year average levels across all regions, except Central and Juba regions which dropped at mild to moderate rates (5-16%).

Terms of Trade (ToT) between daily labor wage and local cereals as well as between local quality goat and cereals have mostly exhibited increases in the month of August with the exception of Central and Northern regions where ToT rates have remained relatively stable month-on-month. Annual comparisons indicated lower ToT in most regions, except in Northern and Central regions, which showed moderate increase (13-14%) and relative stability, respectively. Compared to the five-year average levels, both of the ToTs declined in most of the southern regions, but increased significantly (above 25%) in Northern and Central regions as a result of increased daily labour wages and livestock prices compared to their corresponding five-year averages.



This Market Data Update is a monthly report that presents analysis of market information and is produced regularly as part of the monthly monitoring process.

The weekly price data is collected from 48 main markets and 51 rural markets throughout Somalia since 1995.

Market analysis is an integral part of all of FSNAU's annual food security projections and seasonal technical reports (Technical Reports on FSNAU Post *Gu* and Post *Deyr* Analysis).

Detailed market data are available online on www.fsnau.org/ids.

National Trends: CPI, Exchange Rates, Cereal Prices and Relative Purchasing Power

Table 1: ToT between Cereals (kg) per Daily Labour Wage Rate, by Region

Regions	August 2014 (kg)	%change from		
		Jul-2014	Aug-2013	August Average (2009-2013)
Banadir/Mogadishu	8	-9%	-47	-3
Bay	14	8%	-36%	8%
Bakool	4	33%	-43%	-33%
Gedo	12	-8%	-37%	0%
Juba	8	1%	-46%	-17%
Shabelle	7	-1%	-49%	-10%
Northwest	9	0%	9%	33%
Northeast	8	0%	9%	48%
Central	4	0%	0%	34%

Figure 1: Wheat Prices: Mogadishu and Bossaso Markets

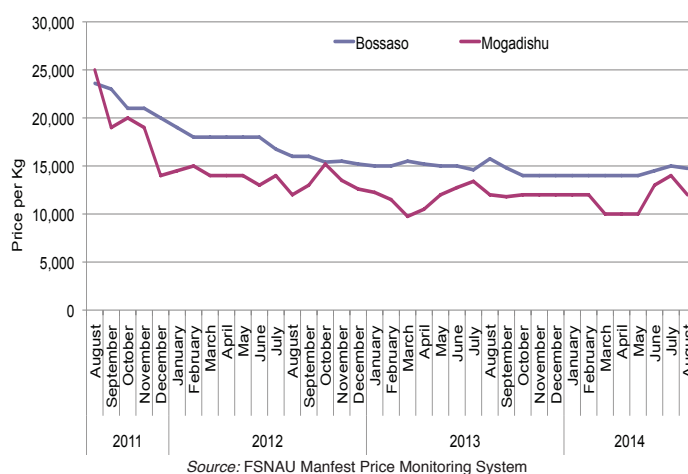


Figure 3: Terms of Trade Between Wage Rates and Selected Cereals

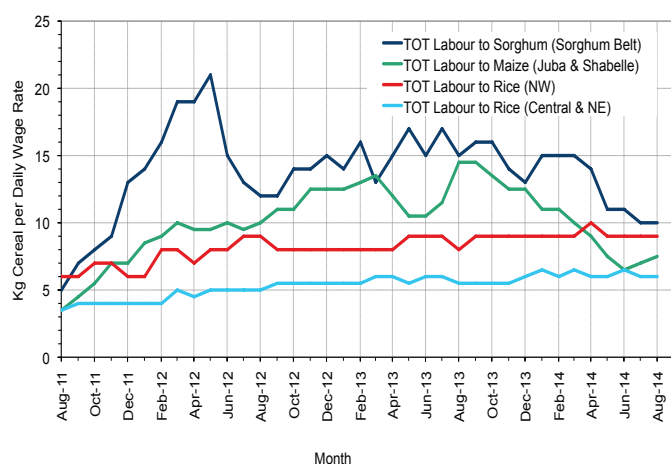


Figure 4: Monthly Exchange Rate for Selected Regions (SoSh and SiSh to USD)

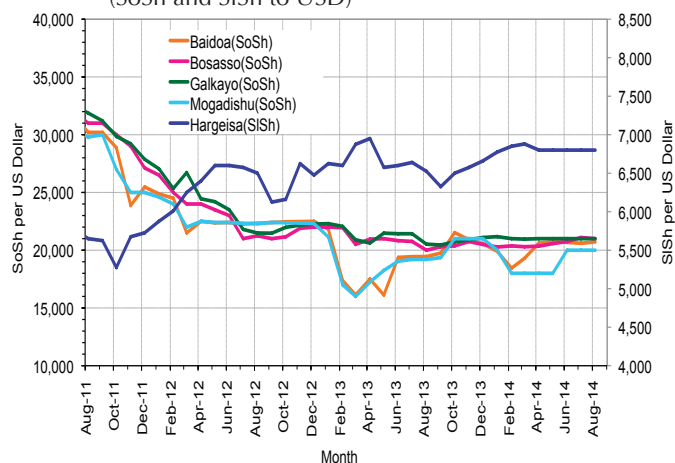


Figure 5: Monthly Trends in Consumer Price Index (CPI, March 2007=100)

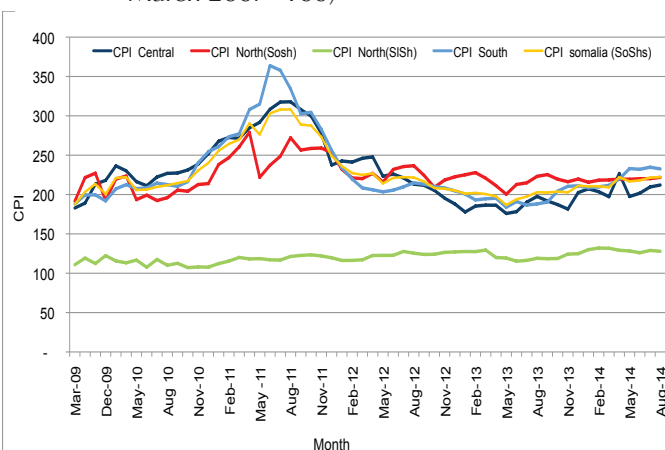
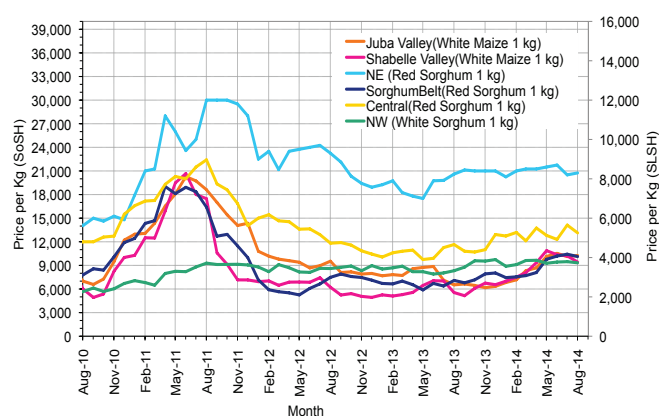


Figure 6: Monthly Trends in Local Cereal Prices



Regional analysis: Juba Regions

Indicator	5-Year Average (2009-2013)	Aug-13	Jul-14	Aug-14 Nominal Price	Aug-14 Real (Deflated) Price	% Change Previous Month	% Change Same Month Previous Year	% Change 5-year avg (2009-2013)
Imported Commodities Prices								
Diesel 1 litre	32,584	26,500	27,500	27,143	11,572	-1%	2%	-17%
Imported Red Rice 1kg	21,260	16,000	15,464	15,607	6,611	1%	-2%	-27%
Petrol 1 litre	34,640	29,500	28,429	27,429	11,695	-4%	-7%	-21%
Sugar	25,752	16,214	15,643	16,143	6,842	3%	0%	-37%
Vegetable Oil 1 litre	43,024	30,357	32,821	33,036	14,106	1%	9%	-23%
Wheat Flour 1kg	19,660	15,786	14,964	15,036	6,366	0%	-5%	-24%
Wheat Grain 1kg	18,000	-	-	-	-	-	-	-
Cereal Prices								
Red Sorghum 1kg	6,920	7,000	10,000	8,000	3,340	-20%	14%	16%
White Maize 1kg	9,885	6,707	9,996	10,229	4,299	2%	53%	3%
Livestock & Livestock Product Prices								
Camel Local Quality (Head)	9,137,940	10,628,429	9,825,214	10,428,929	4,484,423	6%	-2%	14%
Cattle Local Quality (Head)	3,407,063	4,374,417	4,068,125	4,455,833	1,915,944	10%	2%	31%
Fresh Camel Milk 1 litre	16,895	13,371	16,143	15,786	6,688	-2%	18%	-7%
Goat Export Quality (Head)	1,299,048	1,508,000	1,394,286	1,432,786	616,009	3%	-5%	10%
Goat Local Quality (Head)	853,628	981,250	929,393	996,286	428,311	7%	2%	17%
Other Essential Items								
Charcoal 50kg	77,897	82,214	90,893	89,821	38,524	-1%	9%	15%
Cowpeas 1 kg	22,830	17,357	20,464	20,286	8,623	-1%	17%	-11%
Unskilled Labor Wage Rate	93,564	97,714	77,250	80,179	34,378	4%	-18%	-14%
Firewood Bundle	7,745	10,929	11,500	11,643	4,907	1%	7%	50%
Local Sesame Oil 1 litre	75,454	66,929	81,929	78,357	33,594	-4%	17%	4%
Exchange Rate (Somali Shilling per USD)	27,070	19,946	20,693	20,486	8,709	-1%	3%	-24%
Terms of Trade								
Labour Wage (Daily)/ Cereal (Maize(Kg))	9	15	8	8	-	1%	-46%	-17%
Local Goat (Head)/ Cereal (Maize(Kg))	86	146	93	97	-	5%	-33%	13%
Price Indices								
Consumer Price Index	-	188	235	233	-	-1%	24%	-

Figure 7: Trends in Cereal Prices

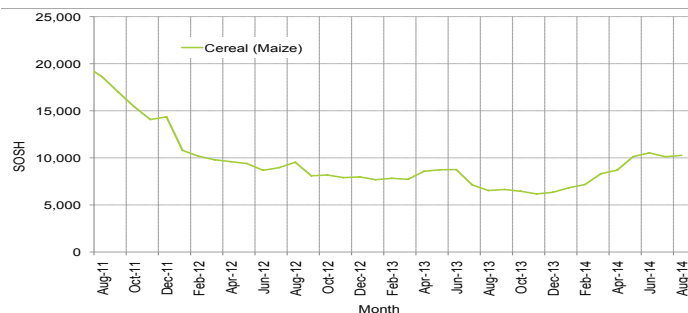


Figure 9: Imported Commodity Prices Compared to Exchange Rate

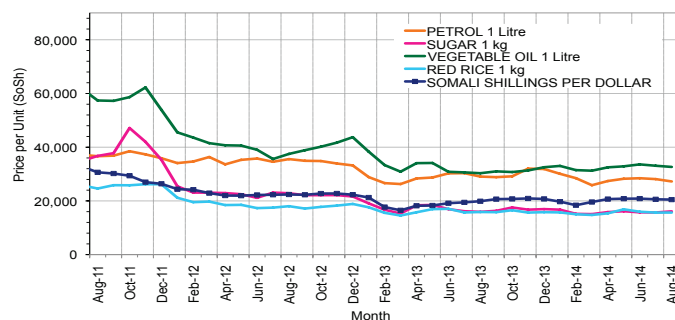


Figure 11: Exchange Rate

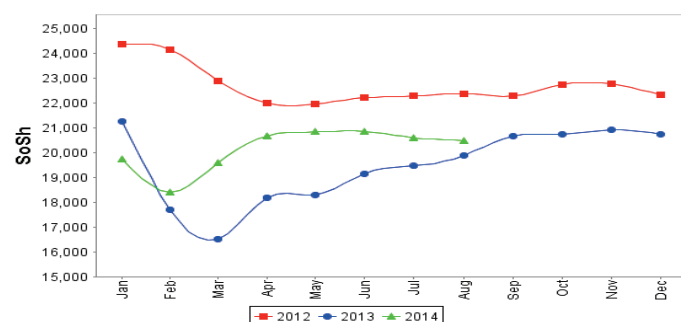


Figure 8: Trends in Wage Rates and Relative Purchasing Power

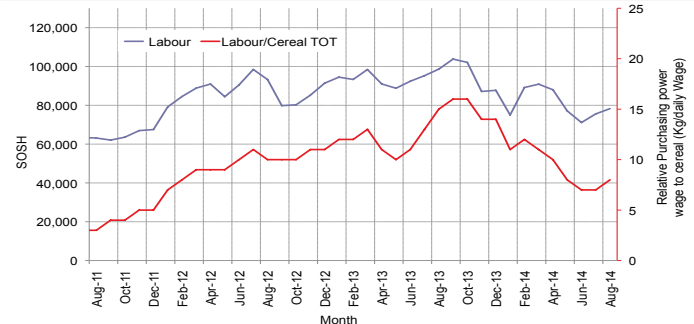


Figure 10: Goat Local Quality

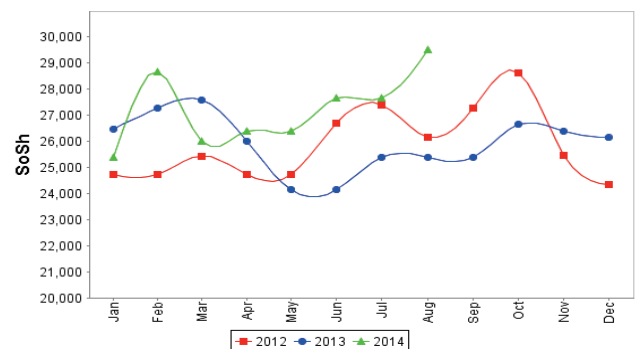
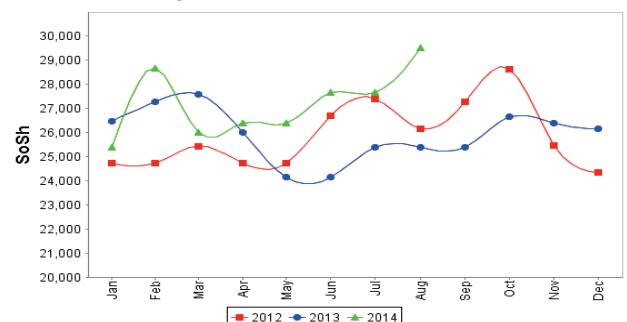


Figure 12: Water Drum (200 litres)



Regional analysis: Sorghum Belt Regions (Bay, Bakool, Gedo and Hiran)

Indicator	5-Year Average (2009-2013)	Aug-13	Jul-14	Aug-14 Nominal Price	Aug-14 Real (Deflated) Price	% Change Previous Month	% Change Same Month Previous Year	% Change 5-year avrg (2009-2013)
Imported Commodities Prices								
Diesel 1 litre	33,493	29,068	30,761	30,966	13,216	1%	7%	-8%
Imported Red Rice 1kg	22,859	17,068	18,000	18,273	7,758	2%	7%	-20%
Petrol 1 litre	32,947	28,091	30,818	31,045	13,250	1%	11%	-6%
Sugar	26,038	18,341	18,989	18,236	7,742	-4%	-1%	-30%
Vegetable Oil 1 litre	47,215	35,477	40,886	39,432	16,856	-4%	11%	-16%
Wheat Flour 1kg	20,389	16,295	17,455	17,318	7,347	-1%	6%	-15%
Wheat Grain 1kg	10,483	8,950	17,442	17,750	7,533	2%	98%	69%
Cereal Prices								
Red Sorghum 1kg	9,299	7,091	10,425	10,120	4,252	-3%	43%	9%
White Maize 1kg	10,738	8,295	13,198	12,222	5,156	-7%	47%	14%
Livestock & Livestock Product Prices								
Camel Local Quality (Head)	10,035,742	13,302,273	12,757,500	12,915,000	5,553,453	1%	-3%	29%
Cattle Local Quality (Head)	3,016,891	3,728,125	3,904,250	3,488,889	1,500,150	-11%	-6%	16%
Fresh Camel Milk 1 litre	22,487	13,227	21,900	22,275	9,478	2%	68%	-1%
Goat Export Quality (Head)	1,359,487	1,602,121	1,471,364	1,513,295	650,629	3%	-6%	11%
Goat Local Quality (Head)	865,232	1,110,227	912,500	956,364	411,144	5%	-14%	11%
Other Essential Items								
Charcoal 50kg	127,995	143,182	148,175	143,825	61,746	-3%	0%	12%
Cowpeas 1 kg	24,234	16,313	25,275	26,027	11,092	3%	60%	7%
Unskilled Labor Wage Rate	92,618	107,955	105,136	101,545	43,565	-3%	-6%	10%
Firewood Bundle	5,814	6,364	7,000	6,602	2,739	-6%	4%	14%
Local Sesame Oil 1 litre	75,370	72,250	94,219	90,813	38,950	-4%	26%	20%
Exchange Rate (Somali Shilling per USD)	27,130	19,855	20,480	20,325	8,640	-1%	2%	-25%
Terms of Trade								
Labour Wage (Daily)/ Cereal (Sorghum(Kg))	10	15	10	10	-	-1%	-34%	1%
Local Goat (Head)/ Cereal (Sorghum(Kg))	93	157	88	95	-	8%	-40%	2%
Price Indices								
Consumer Price Index	-	188	235	233	-	-1%	24%	-

Figure 13: Trends in Cereal Prices

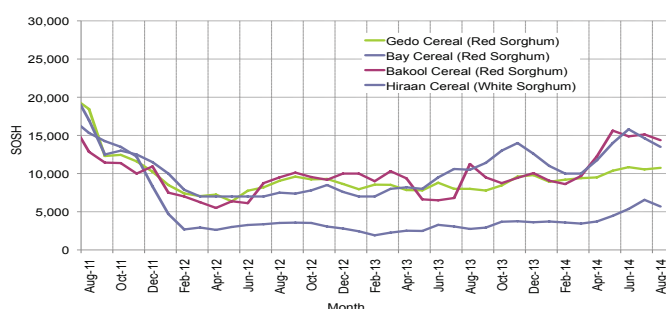


Figure 15: Imported Commodity Prices Compared to Exchange Rate

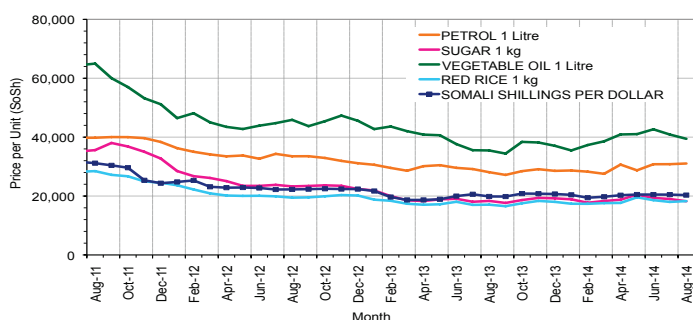


Figure 17: Exchange Rate

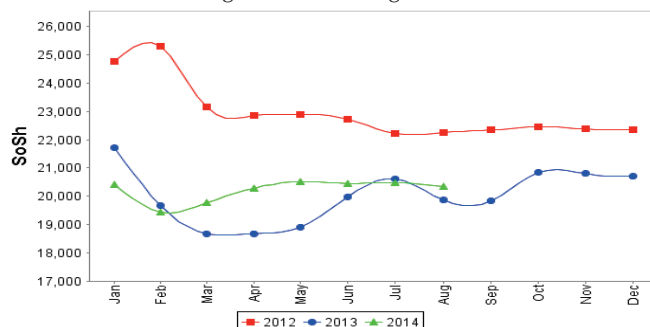


Figure 14: Trends in Wage Rates and Relative Purchasing Power

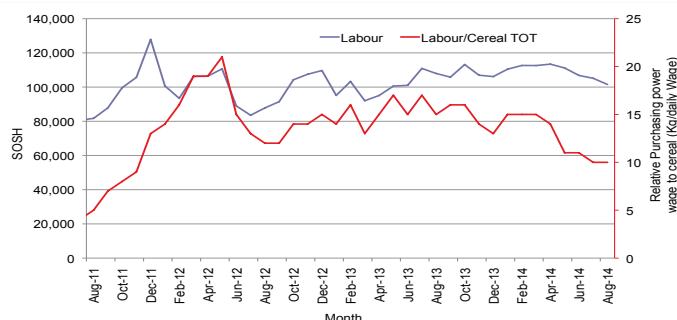


Figure 16: Goat Local Quality

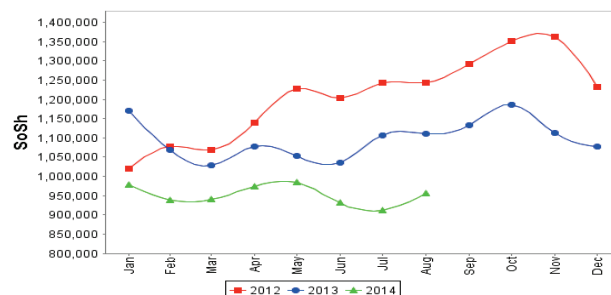
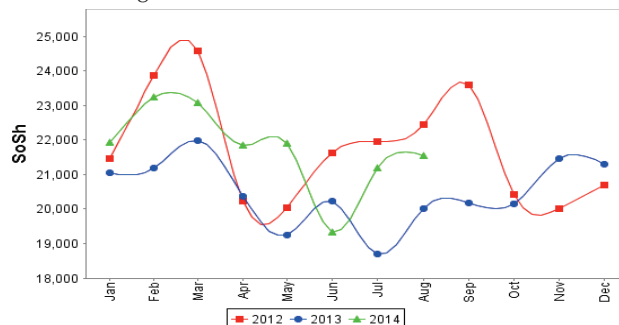


Figure 18: Water Drum (200 litres)



Regional analysis: Shabelle Regions

Indicator	5-Year Average (2009-2013)	Aug-13	Jul-14	Aug-14 Nominal Price	Aug-14 Real (Deflated) Price	% Change Previous Month	% Change Same Month Previous Year	% Change 5-year avg (2009-2013)
Imported Commodities Prices								
Diesel 1 litre	31,141	27,250	28,000	26,833	11,438	-4%	-2%	-14%
Imported Red Rice 1kg	20,341	15,833	16,750	15,917	6,744	-5%	1%	-22%
Petrol 1 litre	31,458	28,458	29,200	29,125	12,424	0%	2%	-7%
Sugar	25,091	16,875	17,083	16,417	6,959	-4%	-3%	-35%
Vegetable Oil 1 litre	38,208	26,417	28,917	27,167	11,582	-6%	3%	-29%
Wheat Flour 1kg	18,941	15,667	17,042	16,000	6,780	-6%	2%	-16%
Wheat Grain 1kg	6,000	4,667	30,000	28,000	11,940	-7%	500%	367%
Cereal Prices								
Red Sorghum 1kg	10,244	7,996	11,201	11,258	4,741	1%	41%	10%
White Maize 1kg	8,201	5,548	10,210	9,422	3,952	-8%	70%	15%
Livestock & Livestock Product Prices								
Camel Local Quality (Head)	13,575,501	17,185,000	18,437,500	16,605,000	7,140,183	-10%	-3%	22%
Cattle Local Quality (Head)	4,204,800	6,167,500	6,065,000	6,450,000	2,773,452	6%	5%	53%
Fresh Camel Milk 1 litre	17,600	14,792	17,333	17,833	7,568	3%	21%	1%
Goat Export Quality (Head)	1,554,666	1,838,750	1,916,875	1,954,375	840,297	2%	6%	26%
Goat Local Quality (Head)	1,126,666	1,311,667	1,334,167	1,386,250	595,999	4%	6%	23%
Other Essential Items								
Charcoal 50kg	112,189	108,472	123,417	121,717	52,239	-1%	12%	8%
Cowpeas 1 kg	23,043	14,593	21,713	20,450	8,694	-6%	40%	-11%
Unskilled Labor Wage Rate	64,094	76,667	72,500	66,167	28,352	-9%	-14%	3%
Firewood Bundle	5,125	7,083	5,000	5,000	2,050	0%	-29%	-2%
Local Sesame Oil 1 litre	60,641	59,167	73,000	72,050	30,882	-1%	22%	19%
Exchange Rate (Somali Shilling per USD)	27,261	19,658	20,985	20,833	8,858	-1%	6%	-24%
Terms of Trade								
Labour Wage (Daily)/ Cereal (Maize(Kg))	8	14	7	7	-	-1%	-49%	-10%
Local Goat (Head)/ Cereal (Maize(Kg))	137	236	131	147	-	13%	-38%	7%
Price Indices								
Consumer Price Index	-	188	235	233	-	-1%	24%	-

Figure 19: Trends in Cereal Prices

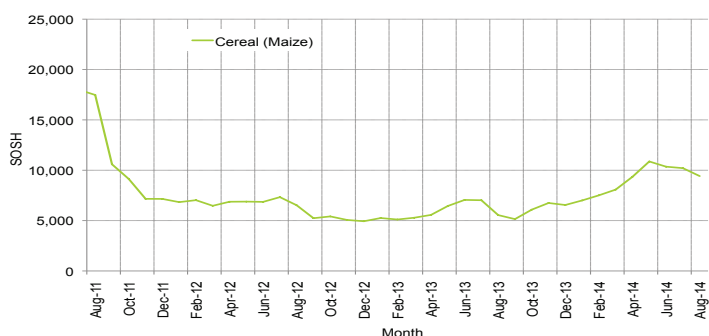


Figure 20: Trends in Wage Rates and Relative Purchasing Power

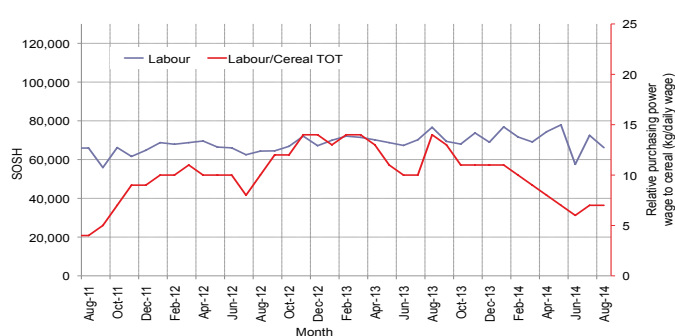


Figure 21: Imported Commodity Prices Compared to Exchange Rate

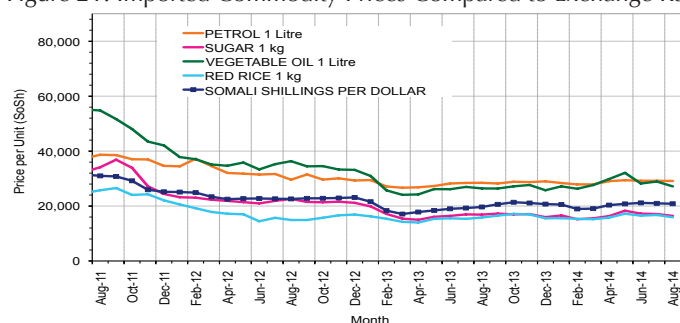


Figure 22: Goat Local Quality

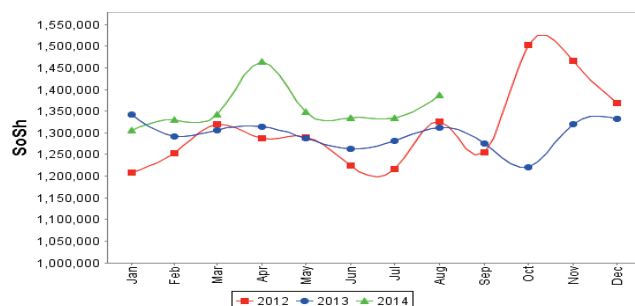


Figure 23: Exchange Rate

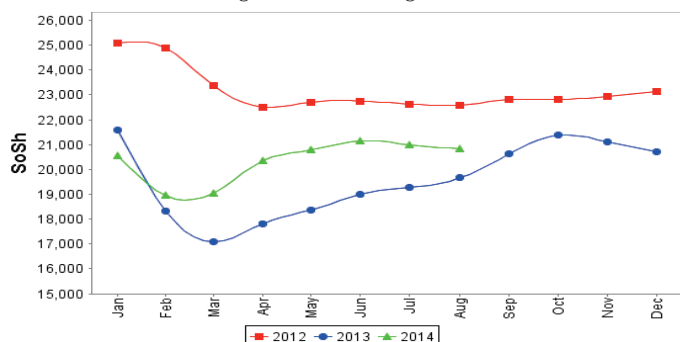
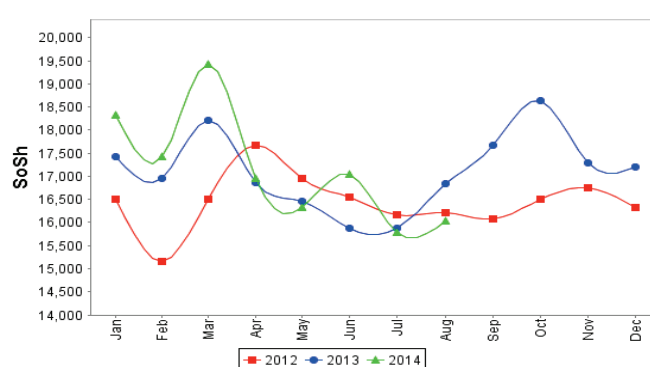


Figure 24: Water Drum (200 litres)



Regional analysis: Banadir Region

Indicator	5-Year Average (2009-2013)	Aug-13	Jul-14	Aug-14 Nominal Price	Aug-14 Real (Deflated) Price	% Change Previous Month	% Change Same Month Previous Year	% Change 5-year avrg (2009-2013)
Imported Commodities Prices								
Diesel 1 litre	27,309	20,250	21,417	21,833	9,288	2%	8%	-20%
Imported Red Rice 1kg	19,266	12,333	12,688	12,813	5,410	1%	4%	-33%
Petrol 1 litre	26,375	20,417	20,958	20,958	8,912	0%	3%	-21%
Sugar	24,291	13,625	14,146	14,000	5,920	-1%	3%	-42%
Vegetable Oil 1 litre	37,108	22,708	24,146	24,313	10,355	1%	7%	-34%
Wheat Flour 1kg	16,672	12,208	12,679	12,313	5,195	-3%	1%	-26%
Wheat Grain 1kg	11,016	7,611	10,167	10,333	4,343	2%	36%	-6%
Cereal Prices								
Red Sorghum 1kg	8,653	5,642	7,975	8,483	3,548	6%	50%	-2%
White Maize 1kg	10,087	7,373	11,254	12,121	5,112	8%	64%	20%
Livestock & Livestock Product Prices								
Camel Local Quality (Head)	17,233,334	-	-	-	-	-	-	-
Cattle Local Quality (Head)	4,220,000	-	-	-	-	-	-	-
Fresh Camel Milk 1 litre	20,161	20,992	21,333	21,458	9,127	1%	2%	6%
Goat Export Quality (Head)	2,044,000	3,000,000	-	-	-	-	-	-
Goat Local Quality (Head)	1,742,250	2,301,250	2,430,000	2,395,000	1,029,769	-1%	4%	37%
Other Essential Items								
Charcoal 50kg	160,471	183,125	192,750	193,167	82,963	0%	5%	20%
Cowpeas 1 kg	23,456	11,950	20,292	21,138	8,990	4%	77%	-10%
Unskilled Labor Wage Rate	86,202	115,417	101,667	100,833	43,259	-1%	-13%	17%
Firewood Bundle	6,014	7,900	8,100	8,200	3,426	1%	4%	36%
Local Sesame Oil 1 litre	61,106	59,250	70,375	71,500	30,646	2%	21%	17%
Exchange Rate (Somali Shilling per USD)	27,041	19,479	20,488	20,588	8,753	0%	6%	-24%
Terms of Trade								
Labour Wage (Daily)/ Cereal (Maize(Kg))	9	16	9	8	-	-8%	-47%	-3%
Local Goat (Head)/ Cereal (Maize(Kg))	173	312	216	198	-	-8%	-37%	14%
Price Indices								
Consumer Price Index	-	188	235	233	-	-1%	24%	-

Figure 25: Trends in Cereal Prices

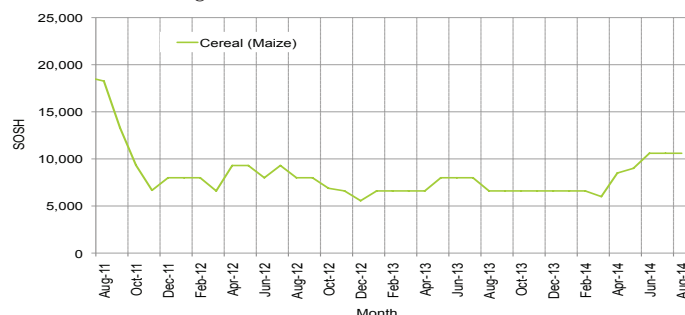


Figure 26: Bakara: Trends in Wage Rates and Relative Purchasing Power

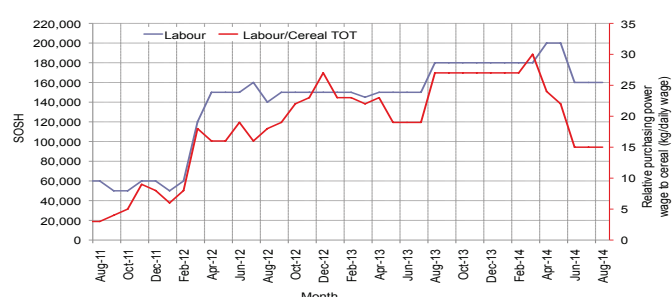


Figure 27: Imported Commodity Prices Compared to Exchange Rate

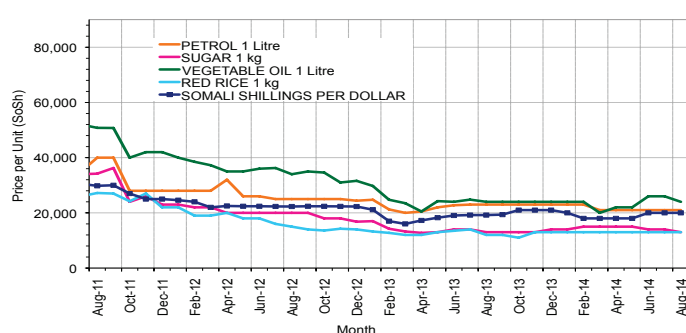


Figure 28: Goat Local Quality

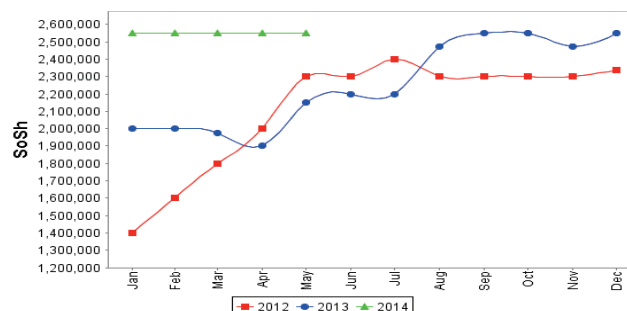


Figure 29: Exchange Rate

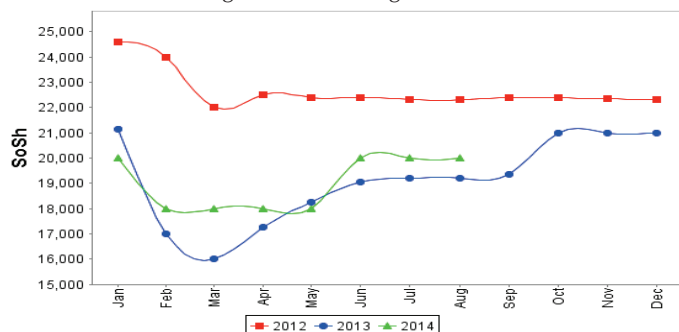
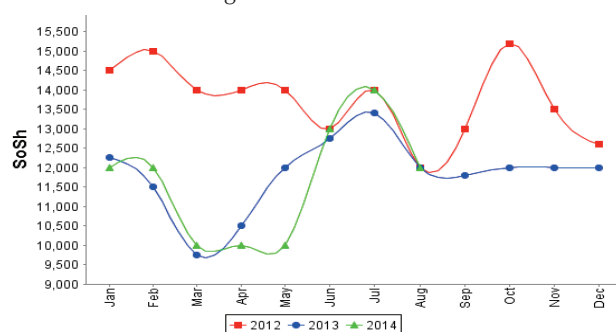


Figure 30: Wheat Flour



Regional analysis: Central Regions

Indicator	5-Year Average (2009-2013)	Aug-13	Jul-14	Aug-14 Nominal Price	Aug-14 Real (Deflated) Price	% Change Previous Month	% Change Same Month Previous Year	% Change 5-year avg (2009-2013)
Imported Commodities Prices								
Diesel 1 litre	31,704	27,300	27,200	28,250	13,219	4%	3%	-11%
Imported Red Rice 1kg	25,630	19,650	18,600	18,200	8,481	-2%	-7%	-29%
Petrol 1 litre	28,670	24,800	24,300	25,700	12,017	6%	4%	-10%
Sugar	28,884	21,600	20,600	20,650	9,636	0%	-4%	-29%
Vegetable Oil 1 litre	50,240	44,900	42,250	43,500	20,410	3%	-3%	-13%
Wheat Flour 1kg	20,566	17,450	16,600	16,900	7,868	2%	-3%	-18%
Wheat Grain 1kg	16,462	13,188	16,000	14,625	6,795	-9%	11%	-11%
Cereal Prices								
Red Sorghum 1kg	13,129	11,650	14,125	13,125	6,088	-7%	13%	0%
White Maize 1kg	14,478	10,750	15,000	13,333	6,186	-11%	24%	-8%
Livestock & Livestock Product Prices								
Camel Local Quality (Head)	8,935,000	11,625,000	11,190,625	10,918,750	5,147,936	-2%	-6%	22%
Cattle Local Quality (Head)	2,100,000			3,000,000	-	-	-	-
Fresh Camel Milk 1 litre	37,898	27,550	32,900	32,400	15,176	-2%	18%	-15%
Goat Export Quality (Head)	1,379,133	1,472,500	1,306,250	1,317,500	621,083	1%	-11%	-4%
Goat Local Quality (Head)	1,017,320	1,162,500	1,019,500	972,500	458,420	-5%	-16%	-4%
Other Essential Items								
Charcoal 50kg	182,040	174,000	171,750	169,000	79,581	-2%	-3%	-7%
Cowpeas 1 kg	30,672	16,700	21,950	23,350	10,909	6%	40%	-24%
Unskilled Labor Wage Rate	85,140	87,500	82,000	81,000	38,090	-1%	-7%	-5%
Firewood Bundle	29,575	32,700	32,250	32,000	14,988	-1%	-2%	8%
Local Sesame Oil 1 litre	93,320	86,000	89,700	91,200	42,900	2%	6%	-2%
Exchange Rate (Somali Shilling per USD)	27,726	20,455	21,040	20,800	9,707	-1%	2%	-25%
Terms of Trade								
Labour Wage (Daily)/ Cereal (Rice(Kg))	3	4	4	4	-	1%	0%	34%
Local Goat (Head)/ Cereal (Rice(Kg))	40	59	55	53	-	-3%	-10%	35%
Camel (Head)/Cereal (Kg)	349	592	602	600	-	0%	1%	72%
Price Indices								
Consumer Price Index	-	198	210	212	-	1%	7%	-

Figure 31: Trends in Cereal Prices

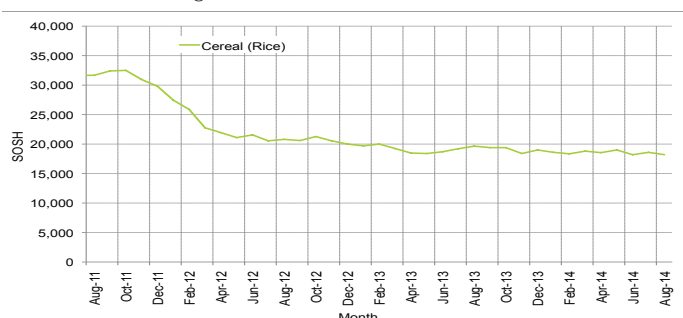


Figure 32: Trends in wage rates and relative purchasing power

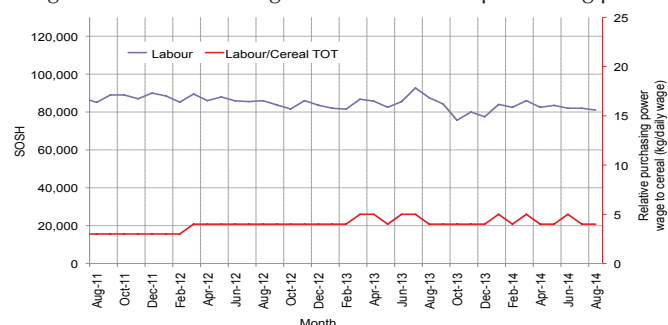


Figure 33: Imported Commodity Prices Compared to Exchange Rate

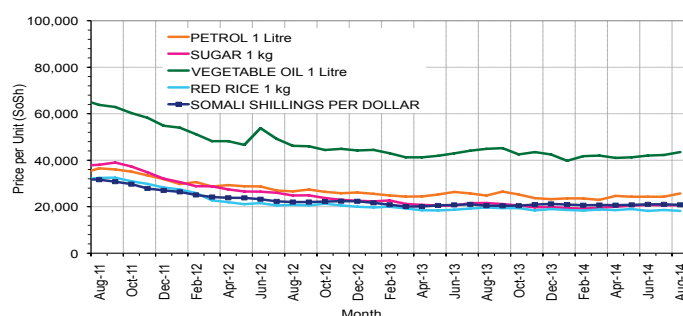


Figure 34: Goat Local Quality

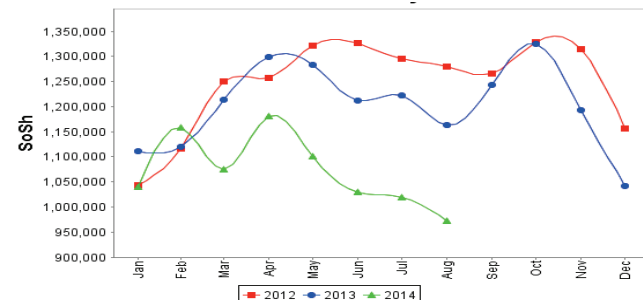


Figure 35: Exchange Rate

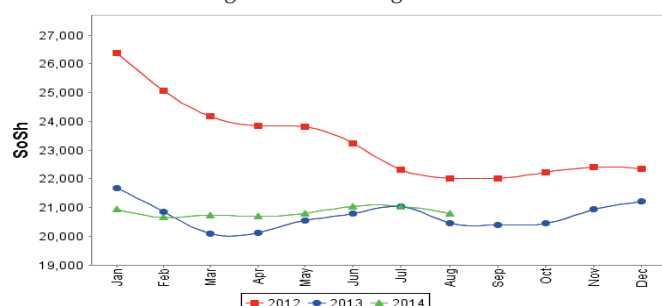
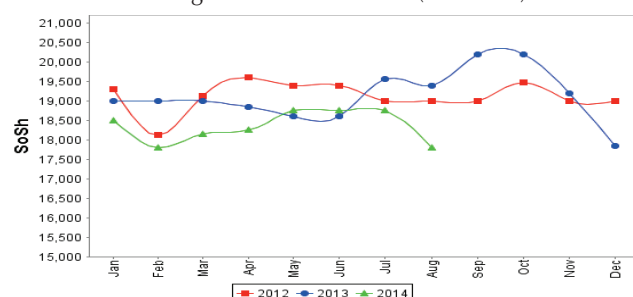


Figure 36: Water Drum (200 litres)



Regional analysis: Northeast Regions

Indicator	5-Year Average (2009-2013)	Aug-13	Jul-14	Aug-14 Nominal Price	Aug-14 Real (Deflated) Price	% Change Previous Month	% Change Same Month Previous Year	% Change 5-year avrg (2009-2013)
Imported Commodities Prices								
Diesel 1 litre	28,317	23,975	23,438	23,375	10,436	0%	-3%	-17%
Imported Red Rice 1kg	20,947	16,763	15,875	15,938	7,084	0%	-5%	-24%
Petrol 1 litre	25,860	21,650	20,313	20,438	9,112	1%	-6%	-21%
Sugar	26,307	18,988	17,125	17,688	7,873	3%	-7%	-33%
Vegetable Oil 1 litre	44,402	34,875	33,375	33,375	14,943	0%	-4%	-25%
Wheat Flour 1kg	18,990	16,025	15,125	15,188	6,746	0%	-5%	-20%
Wheat Grain 1kg	29,510	26,500	23,125	22,500	10,042	-3%	-15%	-24%
Cereal Prices								
Red Sorghum 1kg	20,842	20,600	20,500	20,750	9,253	1%	1%	0%
White Maize 1kg	20,340	21,600	20,750	19,000	8,464	-8%	-12%	-7%
Livestock & Livestock Product Prices								
Camel Local Quality (Head)	13,198,499	15,791,250	15,431,250	15,675,000	7,065,146	2%	-1%	19%
Cattle Local Quality (Head)	6,725,000	7,500,000	8,375,000	8,375,000	3,774,792	0%	12%	25%
Fresh Camel Milk 1 litre	43,491	38,313	33,938	35,063	15,704	3%	-8%	-19%
Goat Export Quality (Head)	1,330,233	1,550,000	1,543,750	1,537,500	692,903	0%	-1%	16%
Goat Local Quality (Head)	1,252,300	1,416,250	1,439,375	1,442,500	650,083	0%	2%	15%
Other Essential Items								
Charcoal 50kg	326,025	373,875	381,250	384,375	173,151	1%	3%	18%
Cowpeas 1 kg	39,036	29,150	26,833	29,000	12,971	8%	-1%	-26%
Unskilled Labor Wage Rate	115,305	125,000	130,000	130,000	58,495	0%	4%	13%
Firewood Bundle	36,880	49,375	46,250	46,875	21,028	1%	-5%	27%
Local Sesame Oil 1 litre	90,879	92,688	96,875	96,563	43,424	0%	4%	6%
Exchange Rate (Somali Shilling per USD)	27,388	20,800	20,919	21,019	9,374	0%	1%	-23%
Terms of Trade								
Labour Wage (Daily)/ Cereal (Rice(Kg))	6	7	8	8	-	0%	9%	48%
Local Goat (Head)/ Cereal (Rice(Kg))	60	84	91	91	-	0%	7%	51%
Price Indices								
Consumer Price Index	-	223	220	222	-	1%	-1%	-

Figure 37: Trends in Cereal Prices

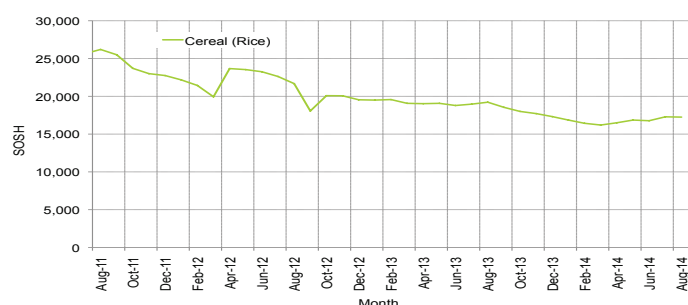


Figure 39: Imported Commodity Prices Compared to Exchange Rate

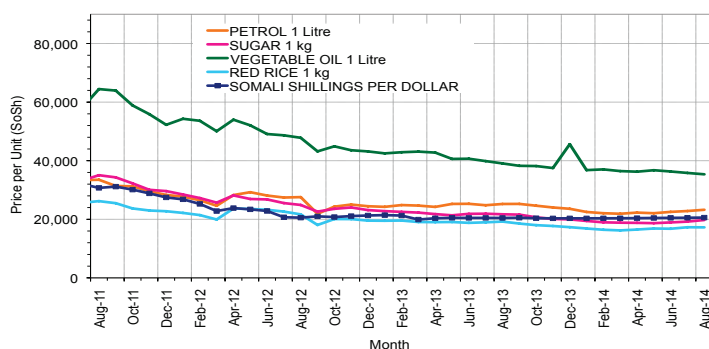


Figure 41: Exchange Rate

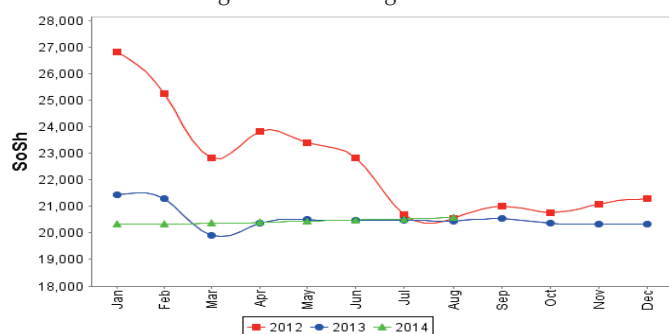


Figure 38: Trends in Wage Rates and Relative Purchasing Power

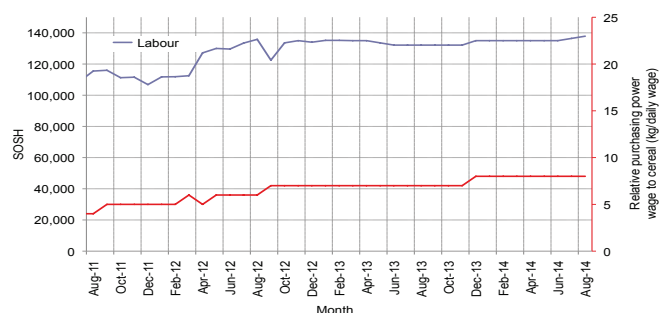


Figure 40: Goat Local Quality

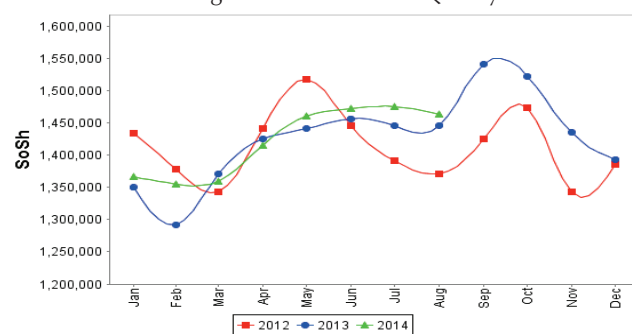
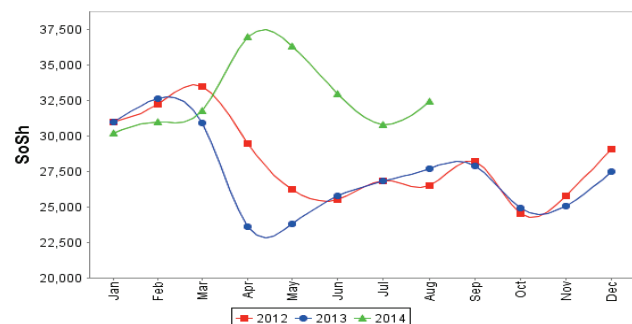


Figure 42: Water Drum (200 litres)



Regional analysis: Northwest Regions

Indicator	5-Year Average (2009-2013)	Aug-13	Jul-14	Aug-14 Nominal Price	Aug-14 Real Price (Deflated)	% Change Previous Month	% Change Same Month Previous Year	% Change 5-year avrg (2009-2013)
Imported Commodities Prices								
Diesel 1 litre	6,226	6,860	6,840	6,880	5,280	1%	0%	11%
Imported Red Rice 1kg	5,036	5,120	5,095	5,095	3,884	0%	0%	1%
Petrol 1 litre	6,554	7,160	7,010	7,280	5,592	4%	2%	11%
Sugar	6,068	5,620	5,640	5,740	4,388	2%	2%	-5%
Vegetable Oil 1 litre	11,149	12,150	12,613	12,613	9,762	0%	4%	13%
Wheat Flour 1kg	4,435	4,320	4,440	4,380	3,325	-1%	1%	-1%
Wheat Grain 1kg	3,391	3,625	3,750	3,575	2,695	-5%	-1%	5%
Cereal Prices								
White Sorghum 1kg	3,277	3,330	3,790	3,730	2,817	-2%	12%	14%
Yellow Maize 1kg	3,556	3,700	3,556	3,606	2,720	1%	-3%	1%
Livestock & Livestock Product Prices								
Camel Local Quality (Head)	2,488,116	4,000,000	3,791,667	4,325,000	3,381,720	14%	8%	74%
Cattle Local Quality (Head)	1,699,716	2,517,500	2,173,333	2,647,500	2,070,043	22%	5%	56%
Fresh Camel Milk 1 litre	5,435	5,510	5,720	5,700	4,357	0%	3%	5%
Goat Export Quality (Head)	354,137	500,875	459,500	472,860	369,640	3%	-6%	34%
Goat Local Quality (Head)	258,359	365,550	368,880	358,850	280,493	-3%	-2%	39%
Other Essential Items								
Charcoal 50kg	37,242	46,600	49,575	51,100	39,856	3%	10%	37%
Cowpeas 1 kg	9,320	9,250	10,313	10,113	7,808	-2%	9%	9%
Unskilled Labor Wage Rate	34,994	43,430	47,000	47,000	36,650	0%	8%	34%
Firewood Bundle	3,019	3,333	3,833	3,833	2,897	0%	15%	27%
Local Sesame Oil 1 litre	24,890	29,500	35,000	35,250	27,463	1%	19%	42%
Exchange Rate (Somaliland Shilling per USD)	6,490	6,695	6,805	6,830	5,241	0%	2%	5%
Terms of Trade								
Labour Wage (Daily)/ Cereal (Rice(Kg))	7	8	9	9	-	0%	9%	33%
Local Goat (Head)/ Cereal (Rice(Kg))	51	71	72	70	-	-3%	-1%	37%
Price Indices								
Consumer Price Index	-	119	129	128	-	-1%	7%	-

Figure 43: Trends in Cereal Prices

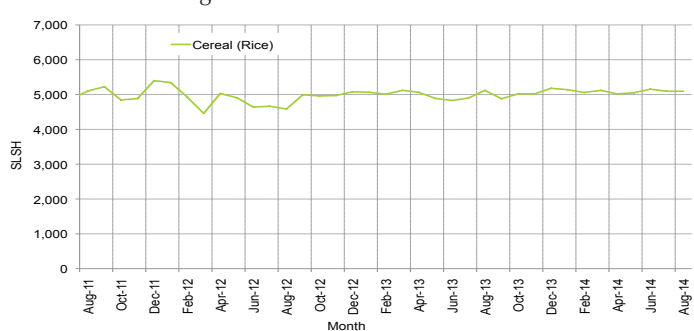


Figure 44: Trends in Wage Rates and Relative Purchasing Power

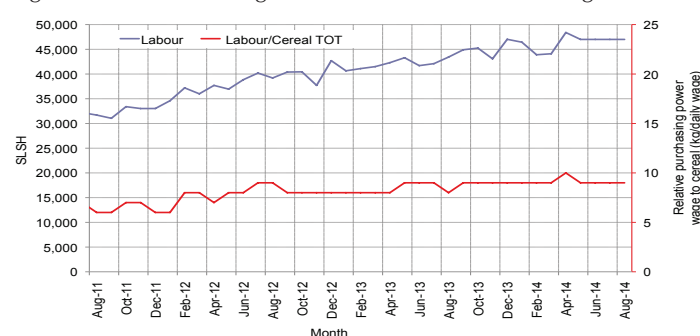


Figure 45: Imported Commodity Prices Compared to Exchange Rate

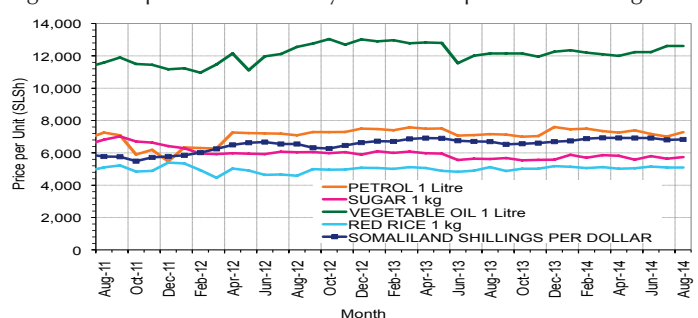


Figure 46: Goat Local Quality

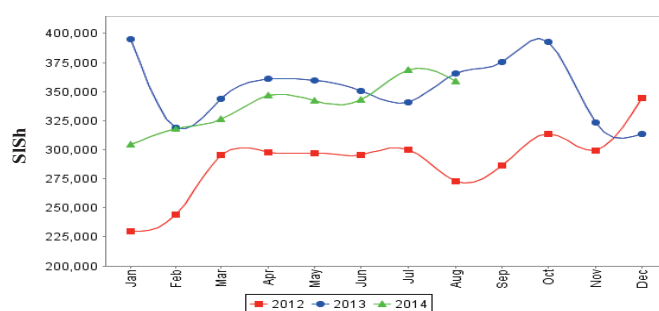


Figure 47: Exchange Rate

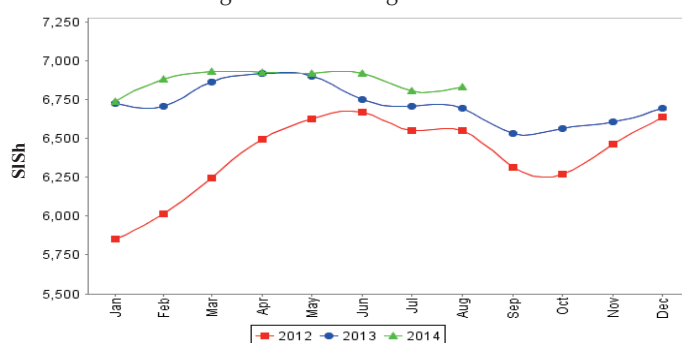
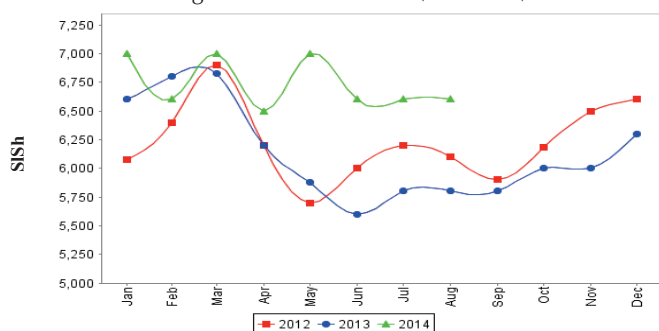


Figure 48: Water Drum (200 litres)



Trends in Livestock Exports

Table 1: Berbera Livestock Exports (Number of Heads)

	1998	1999	2000	2001	2002	2003	2004	2005	2006	2007	2008	2009	2010	2011	2012	2014 (Jan-July)
Shoats	957,224	2,048,136	1,601,083	51,546	341,711	563,107	859,404	1,023,795	1,017,242	1,350,054	1,219,519	1,556,003	2,584,810	3,104,684	3,219,584	1,137,623
Cattle	92,213	89,967	63,263	20,973	37,547	84,312	131,852	148,151	85,631	88,143	80,051	88,005	133,021	150,934	190,354	132,494
Camel	11,663	37,430	16,984	3,473	18,864	21,874	5,147	5,069	22,810	14,245	26,515	20,206	92,651	107,281	102,664	58,647

Figure 49: Berbera Livestock Exports (Number of Heads)

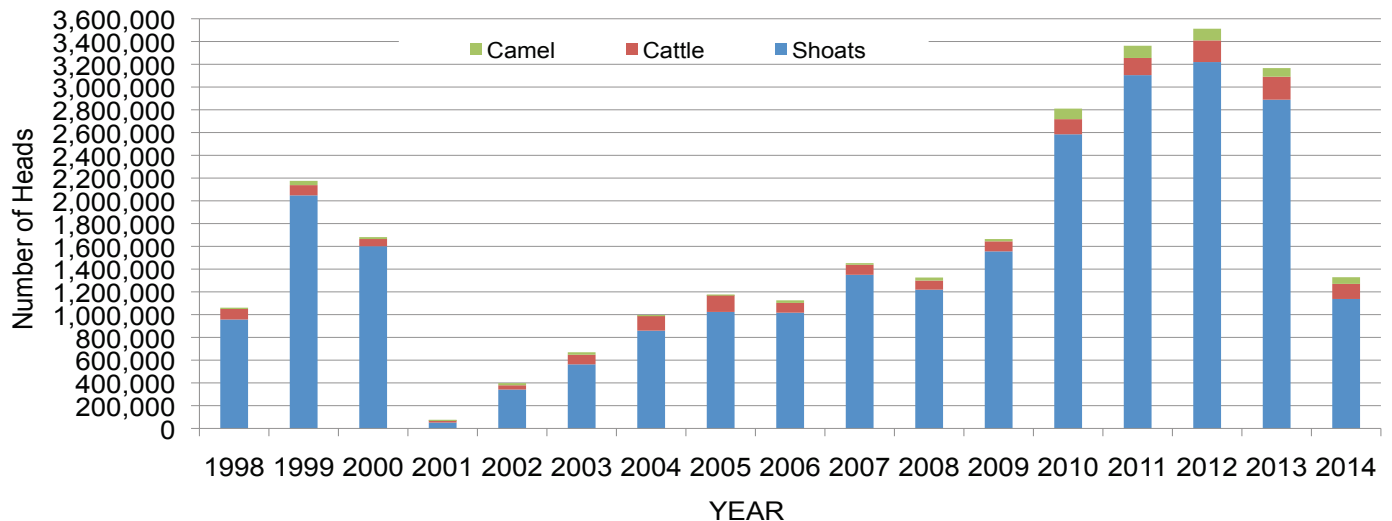
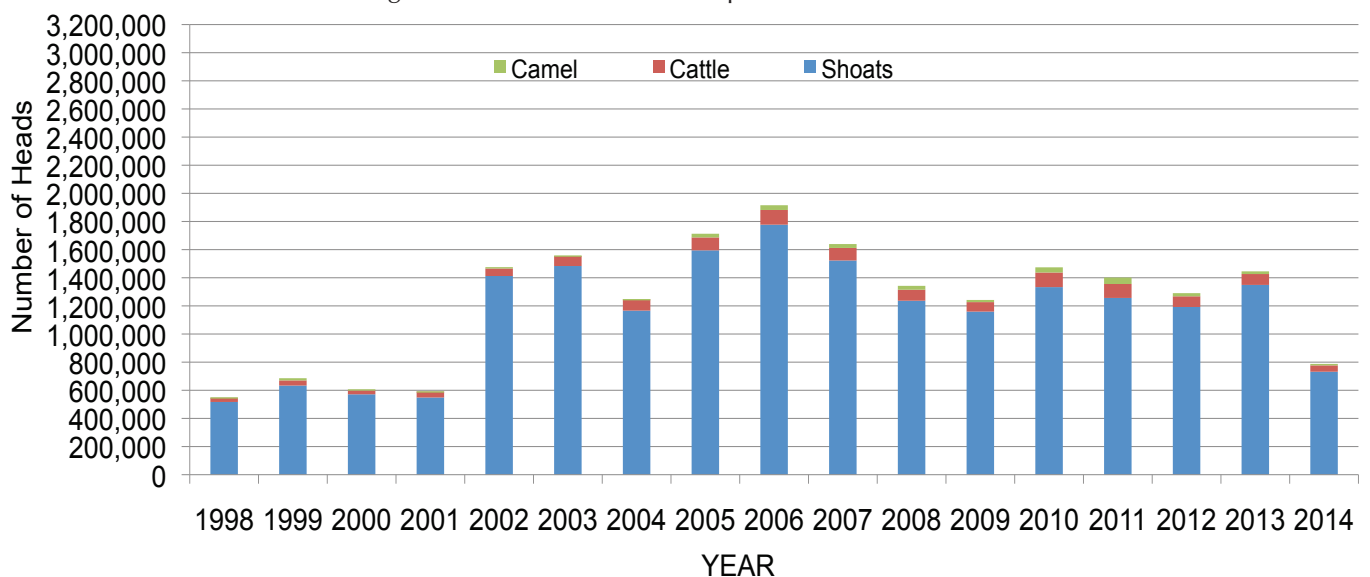


Table 2: Bossaso Livestock Exports (Number of Heads)

	1998	1999	2000	2001	2002	2003	2004	2005	2006	2007	2008	2009	2010	2011	2012	2013	2014 (Jan-July)
Shoats	517,020	633,669	571,455	548,853	1,412,450	1,483,409	1,166,480	1,594,859	1,777,283	1,522,855	1,236,775	1,159,454	1,333,478	1,256,535	1,192,197	1,349,123	731,980
Cattle	29,492	36,586	27,604	42,248	53,313	71,328	79,994	91,910	104,595	89,190	78,046	67,385	103,808	99,058	76,043	77,353	45,080
Camel	3,938	15,544	8,177	1,950	9,720	4,259	2,488	26,109	33,724	27,580	27,639	15,331	36,865	45,878	22,288	19,032	10,437

Figure 50: Bossaso Livestock Exports (Number of Heads)

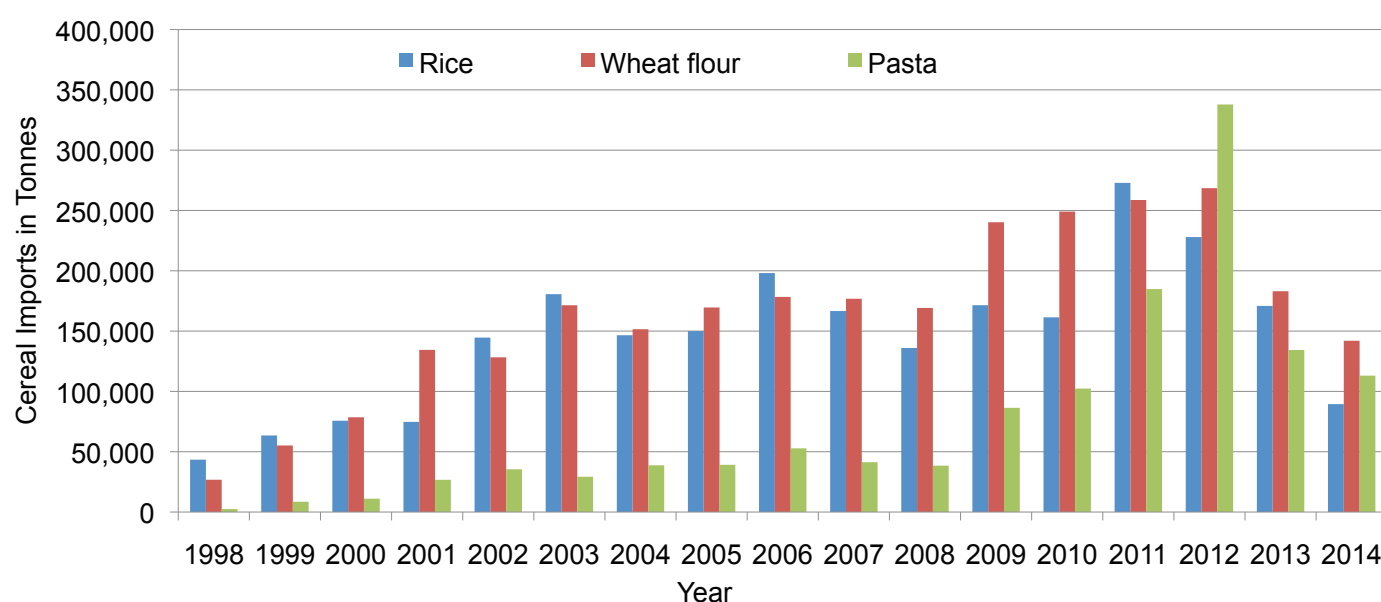


Trends in Cereal Imports

Table 3: Total Cereal Imports through Berbera, Bossaso and Mogadishu Ports (Tonnes) *

	1998	1999	2000	2001	2002	2003	2004	2005	2006	2007	2008	2009	2010	2011	2012	2013	2014 (Jan-July)
Rice	43,410	63,464	75,687	74,729	144,600	180,614	146,567	150,017	198,101	166,626	136,007	171,472	161,415	272,877	227,955	170,868	89,459
Wheat flour	26,774	55,176	78,555	134,425	128,263	171,442	151,555	169,583	178,345	176,821	169,208	240,247	249,080	258,679	268,491	183,058	141,990
Pasta	2,455	8,544	11,071	26,702	35,425	29,273	38,749	39,153	52,815	41,331	38,441	86,372	102,373	184,849	337,878	134,311	113,076

Figure 51: Total Cereal Imports (Berbera, Bossaso and Mogadishu)



* 2014 import data for Berbera and Bossaso are up to July and for Mogadishu (Elmaan Port) is up to April. 2013 Mogadishu data (Elmaan Port) includes only January -March imports.