

Highlights

Inflation: The August Consumer Price Index (CPI) increased slightly across the country. However, the current CPI is lower than in the same month last year in all regions. Compared to the base period (March 2007), the CPI is moderately higher in Somaliland Shilling (SLSH) regions and significantly higher in Somali Shilling (SoSh) areas.

Exchange rate: The Somali currencies (SoSh & SLSH) continue to hold steady against the United States dollar (USD) month-on-month. Compared to one year ago, the exchange rate appreciated in South-Central regions but remained stable in Northern zones. The appreciation of the SoSh is attributable to increased dollar flows into the country, particularly to Mogadishu.

Local grain prices declined in most regional markets of the South apart from Bakool region where they surged sharply but in Gedo region prices remain stable. Local cereal prices increased slightly in the North and Central. The decline in local cereal prices in the South follows increased flows of the recent *Gu* harvest into the markets. The increase in Bakool is attributable to insecurity affecting trade flows from Bay region. Compared to the corresponding month last year, the retail prices of locally produced cereals are at lower levels in most markets with the exception of Hiran and Bakool regions where they are higher.

Prices of imported commodities quoted in local currency decreased or remained stable in most markets month-on-month except in parts of the SLSH areas showing slight increases. Prices are significantly lower than a year ago on account of appreciated SoSh against the USD and increased supplies through the ports.

Livestock prices increased slightly in most areas month-on-month, which could be linked to increasing exports in the wake of oncoming *Hajj* period. Livestock prices are higher than a year ago in most markets. Milk prices remained relatively stable in most areas on account of sustained production and supply.

Labour wages increased in the past month in key cereal producing regions but remained stable in all other areas. The gain in labour wages is attributable to seasonal increase in labour opportunities related to crop harvest activities. Casual wages are significantly higher compared to their levels a year ago in most southern markets apart from Hiran region where they are lower; the wages show relative stability in the rest of the country. The annual increase in wages in southern Somalia reflects increased demand for farm labour occasioned by average *Gu* 2013 harvest in most parts of the region.

Terms of Trade (ToT) between labour wages and local cereals were mixed: rose in Banadir, Bay, Juba and Shabelle; decreased in Northeast, Bakool and Gedo but remained stable in all other areas. Compared to the same period last year, purchasing power of labour dependent households improved in most regions, except declining in Hiran and remaining stable in Northeast.

This Market Data Update is a monthly report that presents analysis of market information and is produced regularly as part of the monthly monitoring process.

The weekly price data is collected from 48 main markets throughout Somalia since 1995.

Market analysis is an integral part of all of FSNAU's Annual Food Security Projections and seasonal technical reports (Technical Reports on FSNAU Post *Gu* and *Deyr* Analysis).

Detailed Market data is available online on www.fsnau.org/ids.

Regional Market Highlights

Juba Valley: Prices of maize and imported food (rice, wheat, vegetable oil, sugar) decreased slightly in most markets while cattle values went up month-on-month. ToT (15Kg/daily wage rate) increased by two Kgs from the previous month's level. Compared to a year ago, prices are significantly lower for milk, maize and imported food, whereas they are considerably elevated for cattle. Annual comparisons of ToT between labour and cereals also indicate considerable gain in the purchasing power for casual labourers.

Sorghum Belt: Month-on-month, prices of sorghum and imported food decreased while those of livestock (cattle and goats) remained stable in most areas. The ToT between labor and cereals increased in Bay but declined in the rest by 1kg. Bakool region shows a particularly sharp decrease in ToT as a result of increased cereal prices mentioned above. Year-on-year price comparisons exhibit declines in the prices of import commodities, goats, milk, and sorghum in most regions. Exceptions are increases in cereal prices in Hiraan and Bakool and declines in labour wages in Hiraan. The ToT is lower in Hiraan but higher in all other regions of the Sorghum Belt when compared to the same month last year.

Shabelle Valley: Monthly prices of imported food and livestock (cattle and goats) remained relatively stable while maize prices declined. ToT increased significantly from the previous month's level in Lower Shabelle region (14kg of maize for one day of labor). Compared to a year ago, prices of imported commodities and cereals are significantly lower, cattle prices are considerably higher, while goat prices are slightly suppressed. The ToT between labour wage and cereals are four units above the same month in 2012 in Lower Shabelle.

Central: Marginal monthly price increase was recorded for red sorghum; imported food prices were relatively stable and local goat prices decreased. Annual comparisons indicate declines in the prices of all of the above items. ToT for local goat to rice (59kg/goat) was five Kgs lower compared to last month and three Kgs lower than in the same month last year (Aug 2012).

Northeast: Slight price increases were observed for most of the commodities (local and imported food) month-on-month. The annual comparisons exhibit significant decreases in the prices for most items except for export quality goat, which are elevated. ToT for local goat to rice closed the month at 84kg/local goat, six Kgs lower than the previous month. ToT is however significantly higher compared to the same period a year ago.

Northwest: Prices of most commodities remained stable except for slight increments for rice, local cereals and goats. Compared to 12 months ago, prices are slightly lower for most imported commodities and cereals, but higher for livestock. The ToT between cereals (white sorghum) and labor wages remained unchanged (13 kg/ daily labour rate) from July 2013, but are higher by 1kg compared to August last year.

Banadir/ Mogadishu: Prices of imported commodities and local cereals decreased while those of goats rose month-on-month. Annual price comparisons indicate a decline for import commodities and maize and an increase for goat prices. The ToT for white maize to labor wage increased significantly from the previous month's level (from 16-27 kgs/daily labor rate) and is also higher than the same period a year ago.

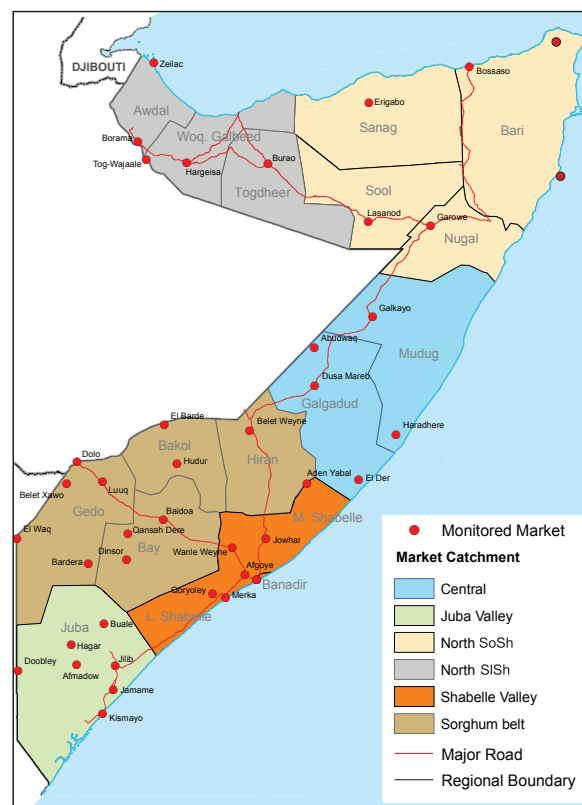


Table 1: ToT of Cereals (kg) per Daily Labour Wage Rate, by Region

Regions	August 2013*	% change from:	
		Jul 2013	Aug 2012
Banadir	27	42%	50%
Bay	22	10%	69%
Bakool	7	-30%	75%
Gedo	19	-5%	36%
Hiran	10	0%	-29%
Juba	15	15%	50%
Shabelle	14	40%	40%
Northeast	6	-14%	0%
Northwest	13	0%	18%
Central	8	0%	14%

International Market Highlights

Diesel: August crude oil² prices went up from \$104 to 107/barrel (3%) on the backdrop of rising geopolitical tensions in the Middle East and North Africa³. The crude oil quotations are slightly lower than the same month last year.

Diesel prices in local currency terms increased (12%) in Mogadishu but remained relatively stable in Bossaso compared to the previous month. Year-on-year, diesel prices show reduction (8%) in Mogadishu and stability in Bossaso. The annual reduction was supported by global oil price trends, appreciated SoSh and steady sea port supplies. Over the past one year, the dollar equivalent price gap between domestic diesel prices and global crude oil prices has widened by 8-17 percent in both cities (Figure 1).

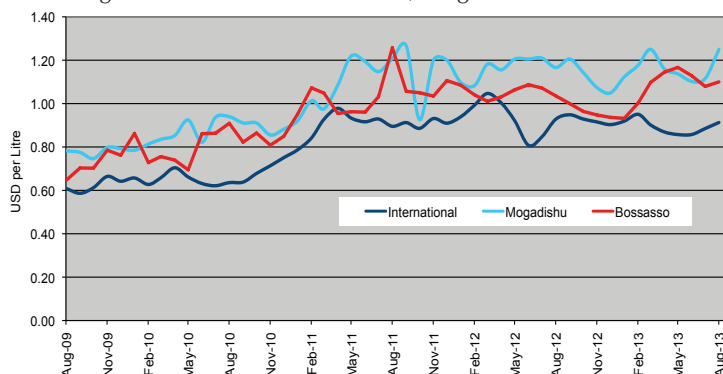
Rice: The export price of the benchmark Thai rice (Grade A1 Super 1/B) declined by around seven percent month-on-month, to its lowest level in about three years⁴. Rice prices were also lower (11%) when compared to August 2012. Global rice output is projected to rise marginally (1%) while stocks are forecast to expand moderately, with further accumulation in Thailand⁵.

Over the last month, prices of imported rice decreased significantly in Mogadishu but remained relatively stable in Bossaso. The prices are currently six and twenty percent lower than the same month last year in Bossaso and Mogadishu respectively. The price easing is a result of a number of factors such as appreciation of the SoSh against the USD, increased supplies through ports. Over the past year, the gap between international and domestic rice prices (in USD terms) has significantly widened in Bossaso (from 48% to 67%) and moderately (from 26% to 32%) in Mogadishu (Figure 2).

Wheat: The International Grain Council wheat sub-index rose by one percent month-on-month following solid export demand⁶. In the coming months the effect of near record global output forecast will most likely be offset by solid export demand.

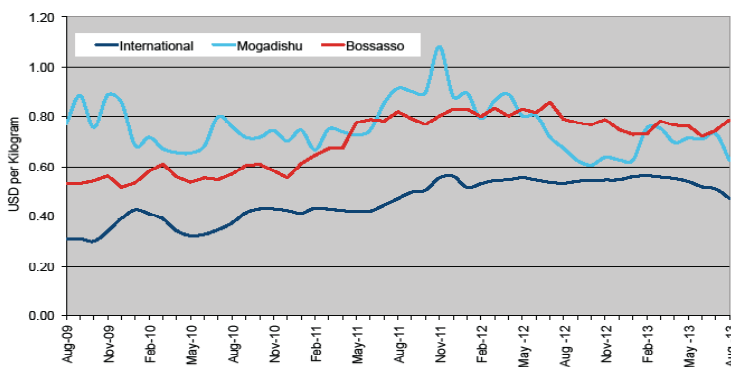
August 2013 wheat flour prices decreased (10%) in local currency terms in Mogadishu, but increased (8%) in Bossaso. Year-on-year comparisons indicate price stability in both cities.

Figure 1: Diesel Prices in Dubai, Mogadishu and Bossaso



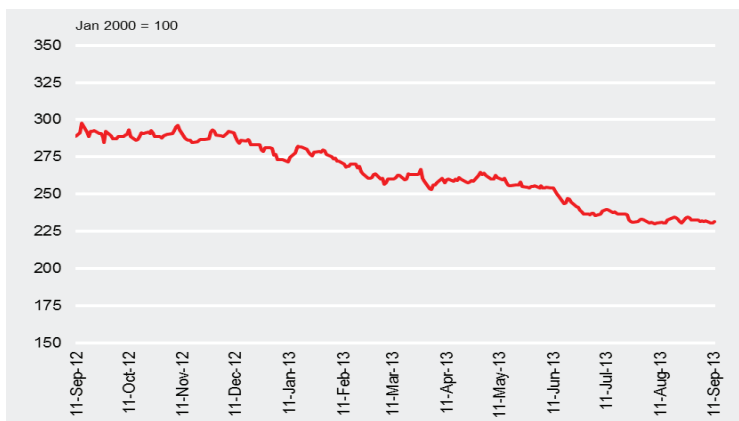
Source: FSNAU & FEWSNET Market Price Monitoring System, FAO Statistics, 2013

Figure 2: Rice Prices in Bangkok (FOB), Mogadishu and Bossaso Markets



Source: FSNAU & FEWSNET Market Price Monitoring System, FAO Statistics, 2013

Figure 3: International Wheat Prices



Source: International Grain Council, 2013

² Free on Board (FoB) in Abu Dhabi (Dubai) is the main source of Somalia's oil imports.

³ Oil Market Report (OMR), Monthly Publication by International Energy Agency (IEA) in collaboration with Organization of Petroleum Exporting Countries (OPEC), released 12 September 2013; [Online] Available from <http://omrpublic.iea.org/>

⁴ Agricultural Market Information System (AMIS) Market; No.11 – September 2013. http://www.google.co.ke/url?sa=t&rct=j&q=&esrc=s&source=web&cd=1&cad=rja&ved=0CC0QFjAA&url=http%3A%2F%2Fwww.fao.org%2Fgiiews%2Fenglish%2Fshortnews%2Fpricemonitor09082013.htm&ei=yOAeUva6D5K2hAfcj4GADQ&usq=AFQjCNEL5coxaQ2ljhda_tvulNiFwkmHoQ&sig2=2srVwdidQOBW8MtWf6xwQ&bvm=bv.51495398,d.ZG4

⁵ Grain Market Report (GMR) 436, 30 August 2013, International Grain Council; <http://www.igc.int/en/downloads/gmrsummary/gmrsumme.pdf>

⁶ Ibid

⁷ The World Food Situation: The FAO Food Price Index September 5, 2013; <http://www.fao.org/worldfoodsituation/foodpricesindex/en/>

⁸ Ibid

International Market Highlights

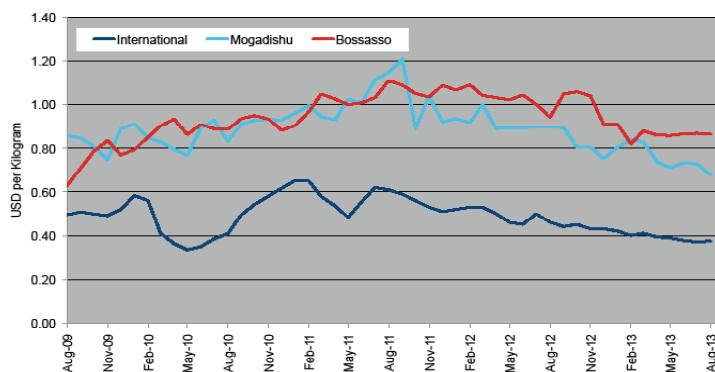
Sugar: The **FAO Sugar Price Index**⁷ averaged 241.7 points in August, up 2.7 points (1.1 percent) from July. The small rebound in sugar prices is attributed to increased use of sugarcane for ethanol production at the expense of sugar, in Brazil, the world's largest sugar producer and exporter. Overall, sugar prices displayed large volatility during the month, amid uncertainties regarding the size of the anticipated production surplus in the major producing areas.

Sugar prices eased (4-7%) month-on-month and decreased significantly (14-34%) year-on-year. These price trends are attributable to strengthened SoSh and enhanced port supplies.

Cooking Oil: The **FAO Oils/Fats Price Index**⁸ averaged 185.5 points in August, 5.7 points (or 3.0 percent) below the July value. The prospect of expanding total vegetable oil supplies in 2013/14 is pointing towards a general decline in vegetable oil prices in the coming months.

On the domestic front, month-on-month vegetable oil price movement was flat in the two port cities, but was significantly lower (10-29%) when compared to a year ago (Aug '12), reflecting accelerated movement of supplies through ports and appreciated domestic currency.

Figure 4: Sugar Prices: International, Mogadishu and Bossaso Markets



Source: FSNAU & FEWSNET Market Price Monitoring System, International Sugar Organizations, 2013

National Trends: CPI, Exchange Rates, Cereal Prices and Relative Purchasing Power

Figure 5: Terms of Trade Between Wage Rates and Selected Cereals

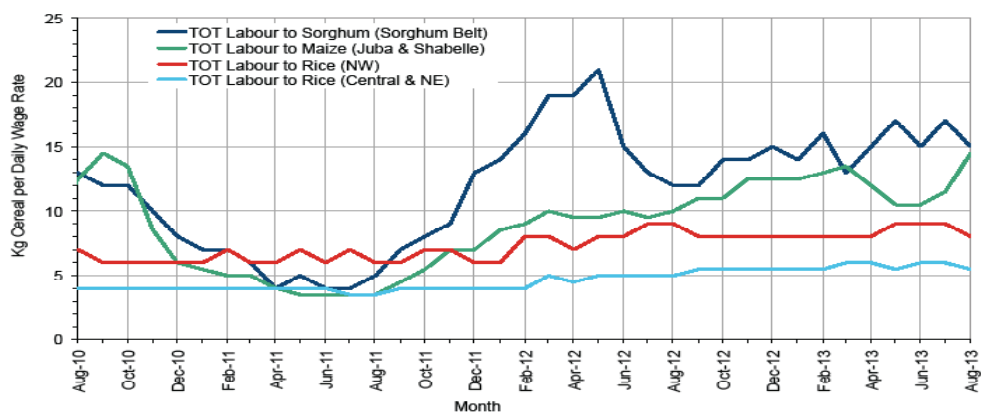


Figure 6: Monthly Exchange Rate for Selected Regions (SoSh and SiSh to USD)

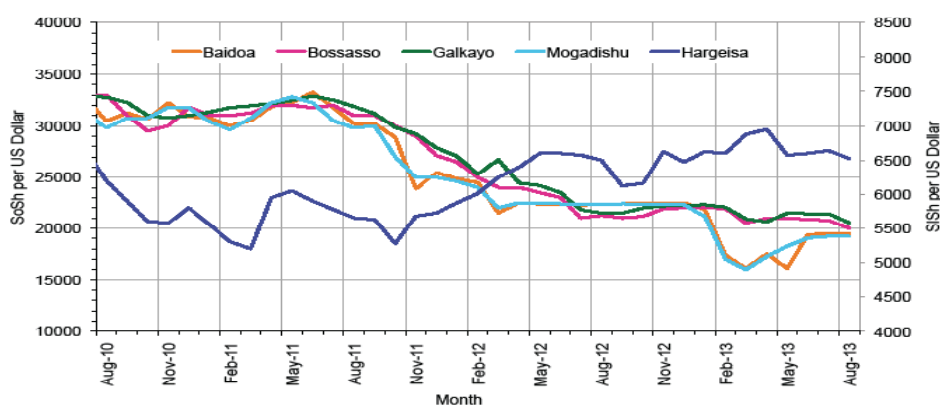


Figure 7: Monthly Trends in Consumer Price Index (CPI, March 2007=100)

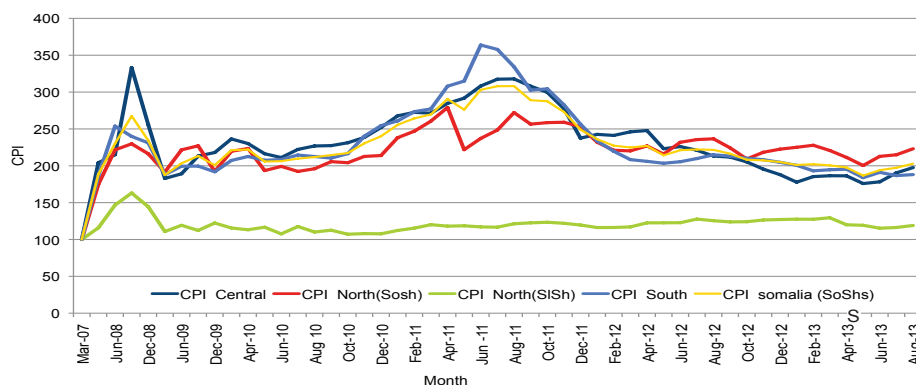
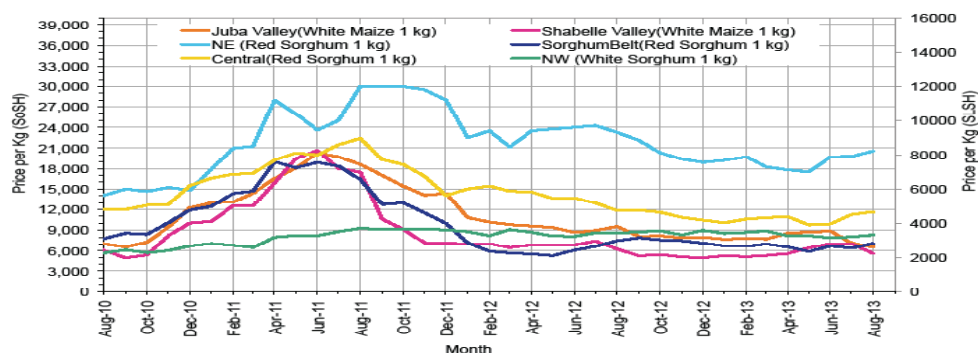


Figure 8: Monthly Trends in Local Cereal Prices



Regional analysis: Juba Regions

Indicator	5-Year Average (2008-2012)	Aug-12	Jul-13	Aug-13 Nominal Price	Aug-13 Real (Deflated) Price	% Change Same Month Previous Year	% Change Previous Month	% Change 5-year avrg (2008-2012)
Imported Commodities Prices								
Diesel 1 litre	38,005	33,893	27,064	26,500	13,991	-22%	-2%	-30%
Imported Red Rice 1kg	27,795	18,036	15,657	16,000	8,408	-11%	2%	-42%
Petrol 1 litre	37,740	35,571	30,886	29,500	15,586	-17%	-4%	-22%
Sugar	27,402	22,857	16,186	16,214	8,521	-29%	0%	-41%
Vegetable Oil 1 litre	53,281	37,500	30,714	30,357	16,042	-19%	-1%	-43%
Wheat Flour 1kg	23,460	17,143	15,771	15,786	8,294	-8%	0%	-33%
Wheat Grain 1kg	21,333	-	-	-	-	-	-	-
Cereal Prices								
Red Sorghum 1kg	8,372	6,500	8,000	7,000	3,622	8%	-13%	-16%
White Maize 1kg	12,239	9,536	7,384	6,707	3,466	-30%	-9%	-45%
Livestock & Livestock Product Prices								
Camel Local Quality (Head)	9,541,922	9,396,250	11,289,086	10,628,429	5,651,361	13%	-6%	11%
Cattle Local Quality (Head)	3,533,713	3,636,250	4,101,033	4,374,417	2,325,911	20%	7%	24%
Fresh Camel Milk 1 litre	16,985	19,893	12,943	13,371	7,010	-33%	3%	-21%
Goat Export Quality (Head)	1,268,234	1,833,571	1,526,843	1,508,000	801,750	-18%	-1%	19%
Goat Local Quality (Head)	852,092	1,220,357	1,024,071	981,250	521,661	-20%	-4%	15%
Other Essential Items								
Charcoal 50kg	77,647	76,786	86,243	82,214	43,616	7%	-5%	6%
Cowpeas 1 kg	25,030	22,571	19,429	17,357	9,129	-23%	-11%	-31%
Unskilled Labor Wage Rate	92,971	93,250	95,300	97,714	51,858	5%	3%	5%
Firewood Bundle	6,709	9,000	10,229	10,929	5,711	21%	7%	63%
Local Sesame Oil 1 litre	82,168	67,500	71,357	66,929	35,488	-1%	-6%	-19%
Exchange Rate (Somali Shilling per USD)	30,314	22,389	19,454	19,946	10,506	-11%	3%	-34%
Terms of Trade								
Labour Wage (Daily)/ Cereal (Maize(Kg))	8	10	13	15	-	49%	13%	92%
Local Goat (Head)/ Cereal (Maize(Kg))	70	128	139	146	-	14%	5%	110%
Price Indices								
Consumer Price Index	-	215	187	188	-	-12%	1%	-

Figure 9: Trends in Cereal Prices

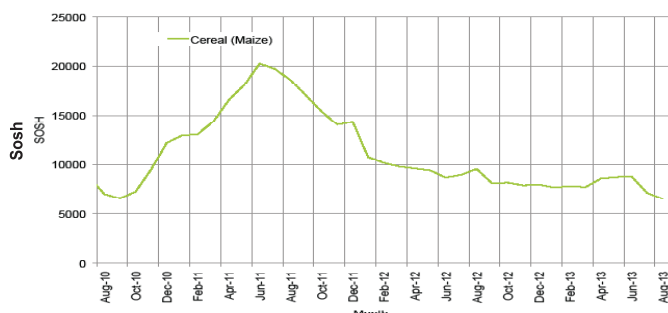


Figure 10: Trends in Wage Rates and Relative Purchasing Power

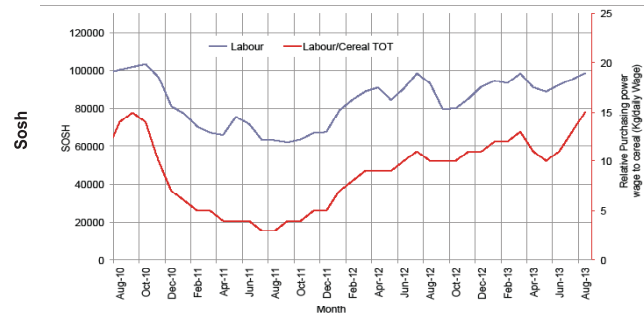


Figure 11: Imported Commodity Prices Compared to Exchange Rate

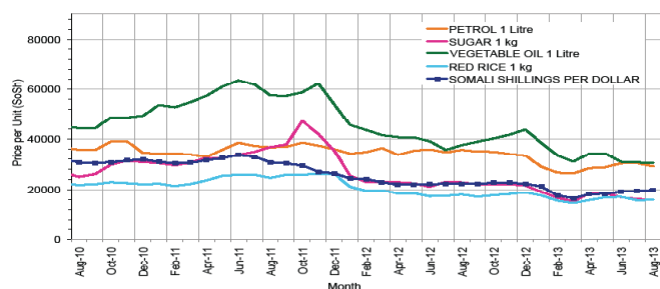


Figure 12: Goat Local Quality

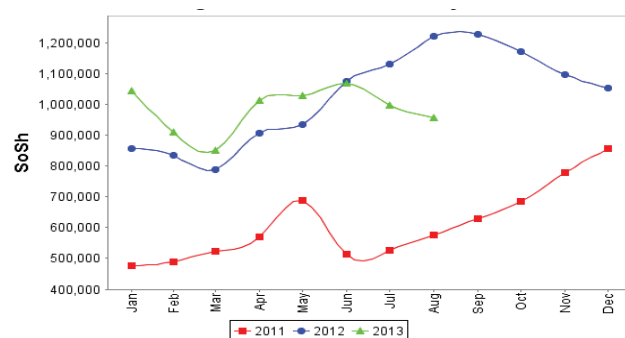


Figure 13: Exchange Rate

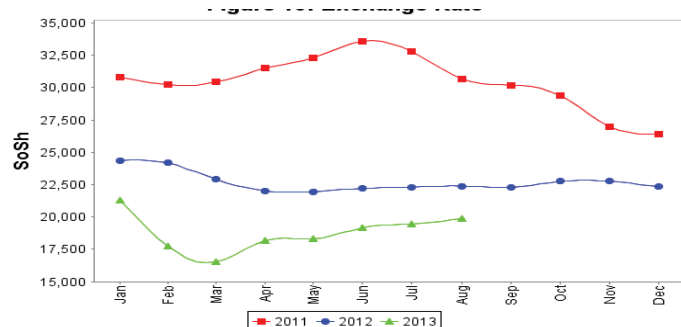
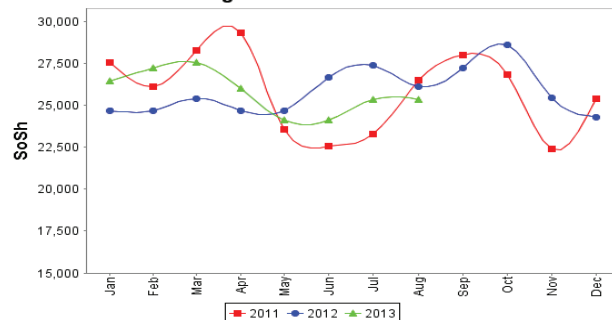


Figure 14: Water Drum



Regional analysis: Sorghum Belt Regions (Bay, Bakool, Gedo and Hiran)

Indicator	5-Year Average (2008-2012)	Aug-12	Jul-13	Aug-13 Nominal Price	Aug-13 Real (Deflated) Price	% Change Same Month Previous Year	% Change Previous Month	% Change 5-year avg (2008-2012)
Imported Commodities Prices								
Diesel 1 litre	37,099	31,773	29,600	29,068	15,356	-9%	-2%	-22%
Imported Red Rice 1kg	29,006	19,445	16,995	17,068	8,976	-12%	0%	-41%
Petrol 1 litre	35,916	33,500	29,164	28,091	14,837	-16%	-4%	-22%
Sugar	27,296	23,273	18,055	18,341	9,652	-21%	2%	-33%
Vegetable Oil 1 litre	55,080	45,864	35,564	35,477	18,764	-23%	0%	-36%
Wheat Flour 1kg	25,613	17,909	16,255	16,295	8,565	-9%	0%	-36%
Wheat Grain 1kg	18,768	11,579	10,137	8,950	4,659	-23%	-12%	-52%
Cereal Prices								
Red Sorghum 1kg	11,135	7,485	6,382	7,091	3,671	-5%	11%	-36%
White Maize 1kg	12,821	9,155	9,136	8,295	4,311	-9%	-9%	-35%
Livestock & Livestock Product Prices								
Camel Local Quality (Head)	8,979,288	12,796,750	12,856,364	13,302,273	7,073,126	4%	3%	48%
Cattle Local Quality (Head)	2,973,766	3,823,438	3,647,778	3,728,125	1,982,258	-2%	2%	25%
Fresh Camel Milk 1 litre	24,460	31,568	12,764	13,227	6,933	-58%	4%	-46%
Goat Export Quality (Head)	1,258,638	1,716,818	1,604,500	1,602,121	851,797	-7%	0%	27%
Goat Local Quality (Head)	775,776	1,243,523	1,287,273	1,335,227	709,881	7%	4%	72%
Other Essential Items								
Charcoal 50kg	122,487	140,227	144,727	143,182	76,034	2%	-1%	17%
Cowpeas 1 kg	27,102	21,844	16,342	16,313	8,574	-25%	0%	-40%
Unskilled Labor Wage Rate	86,424	87,795	110,909	107,955	57,303	23%	-3%	25%
Firewood Bundle	5,682	6,455	6,545	6,364	3,284	-1%	-3%	12%
Local Sesame Oil 1 litre	83,170	66,042	72,686	72,250	38,318	9%	-1%	-13%
Exchange Rate (Somali Shilling per USD)	29,819	22,255	20,609	19,855	10,458	-11%	-4%	-33%
Terms of Trade								
Labour Wage (Daily)/ Cereal (Sorghum(Kg))	8	12	17	15	-	30%	-12%	96%
Local Goat (Head)/ Cereal (Sorghum(Kg))	70	166	202	188	-	13%	-7%	170%
Price Indices								
Consumer Price Index	-	215	187	188	-	-12%	1%	-

Figure 15: Trends in Cereal Prices

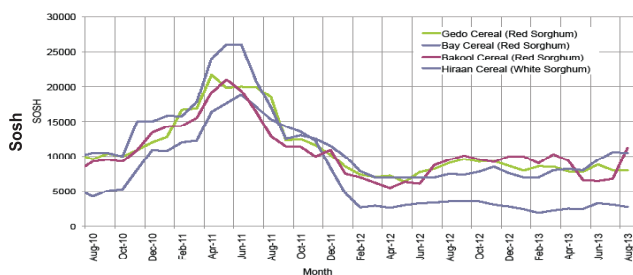


Figure 16: Trends in Wage Rates and Relative Purchasing Power

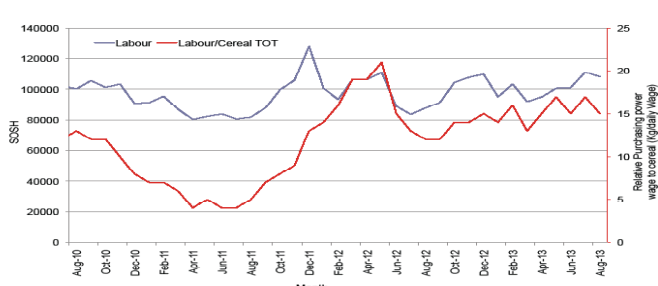


Figure 17: Imported Commodity Prices Compared to Exchange Rate

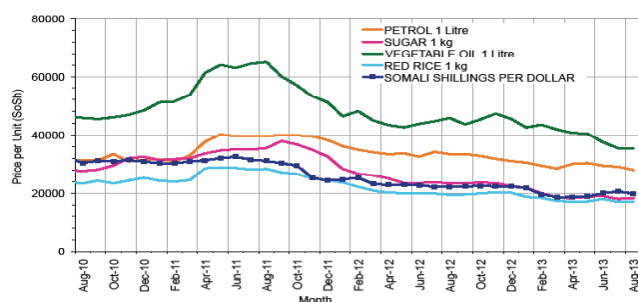


Figure 18: Goat Local Quality

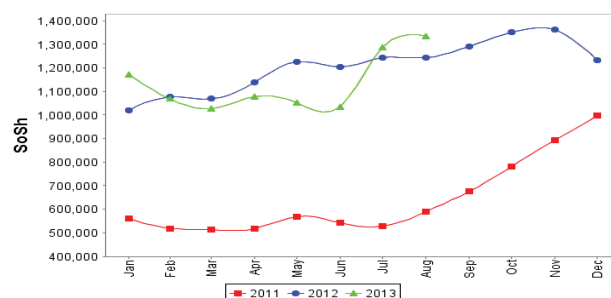


Figure 19: Exchange Rate

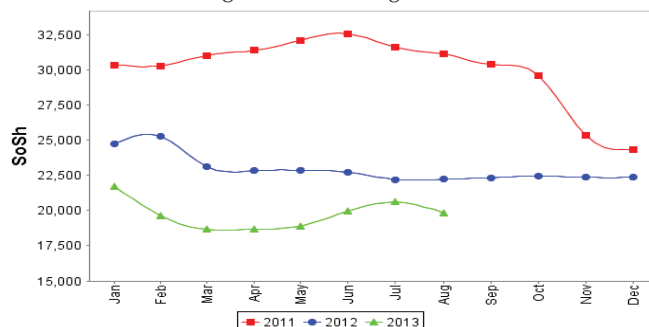
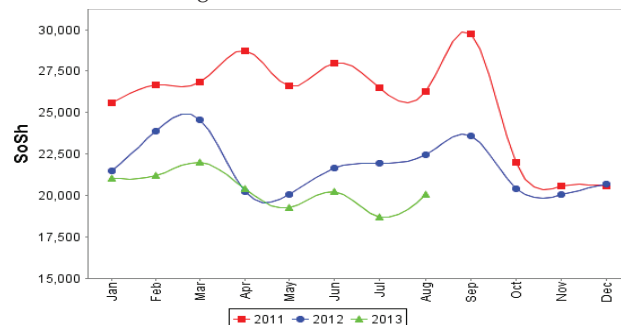


Figure 20: Water Drum



Regional analysis: Shabelle Regions

Indicator	5-Year Average (2008-2012)	Aug-12	Jul-13	Aug-13 Nominal Price	Aug-13 Real (Deflated) Price	% Change Same Month Previous Year	% Change Previous Month	% Change 5-year avrg (2008-2012)
Imported Commodities Prices								
Diesel 1 litre	35,574	29,458	26,917	27,250	14,390	-7%	1%	-23%
Imported Red Rice 1kg	25,808	14,917	15,333	15,833	8,319	6%	3%	-39%
Petrol 1 litre	34,116	29,583	28,417	28,458	15,032	-4%	0%	-17%
Sugar	26,250	22,583	16,958	16,875	8,873	-25%	0%	-36%
Vegetable Oil 1 litre	45,800	36,333	26,958	26,417	13,947	-27%	-2%	-42%
Wheat Flour 1kg	23,583	15,500	15,250	15,667	8,231	1%	3%	-34%
Wheat Grain 1kg	7,334	7,334	5,333	4,667	2,382	-36%	-12%	-36%
Cereal Prices								
Red Sorghum 1kg	11,214	9,530	7,444	7,996	4,152	-16%	7%	-29%
White Maize 1kg	10,080	6,523	7,023	5,548	2,850	-15%	-21%	-45%
Livestock & Livestock Product Prices								
Camel Local Quality (Head)	12,256,500	16,930,000	16,625,000	17,185,000	9,137,690	2%	3%	40%
Cattle Local Quality (Head)	3,633,633	4,700,000	6,270,000	6,167,500	3,279,348	31%	-2%	70%
Fresh Camel Milk 1 litre	16,954	22,688	14,417	14,792	7,765	-35%	3%	-13%
Goat Export Quality (Head)	1,419,041	1,966,250	1,737,500	1,838,750	977,620	-6%	6%	30%
Goat Local Quality (Head)	1,018,639	1,326,667	1,281,250	1,311,667	697,353	-1%	2%	29%
Other Essential Items								
Charcoal 50kg	115,588	116,361	125,174	108,472	57,578	-7%	-13%	-6%
Cowpeas 1 kg	25,406	19,055	13,161	14,593	7,660	-23%	11%	-43%
Unskilled Labor Wage Rate	58,136	64,375	70,208	76,667	40,666	19%	9%	32%
Firewood Bundle	4,325	6,042	7,125	7,083	3,666	17%	-1%	64%
Local Sesame Oil 1 litre	65,966	53,625	58,667	59,167	31,361	10%	1%	-10%
Exchange Rate (Somali Shilling per USD)	30,404	22,592	19,271	19,658	10,353	-13%	2%	-35%
Terms of Trade								
Labour Wage (Daily)/ Cereal (Maize(Kg))	6	10	10	14	-	40%	38%	140%
Local Goat (Head)/ Cereal (Maize(Kg))	101	203	182	236	-	16%	30%	134%
Price Indices								
Consumer Price Index	-	215	187	188	-	-12%	1%	-

Figure 21: Trends in Cereal Prices

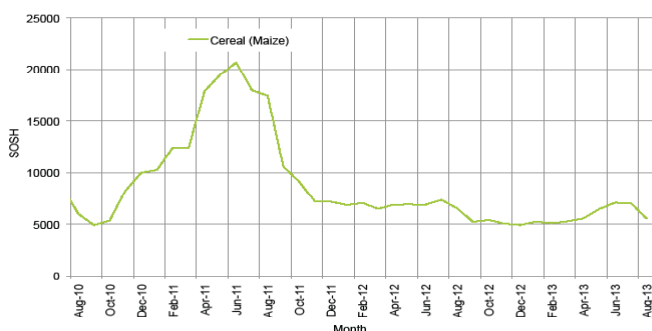


Figure 22: Trends in Wage Rates and Relative Purchasing Power

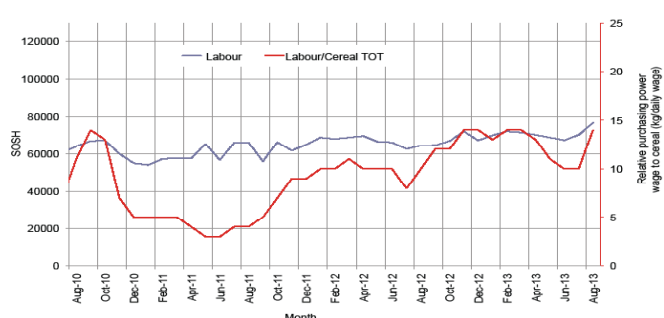


Figure 23: Imported Commodity Prices Compared to Exchange Rate

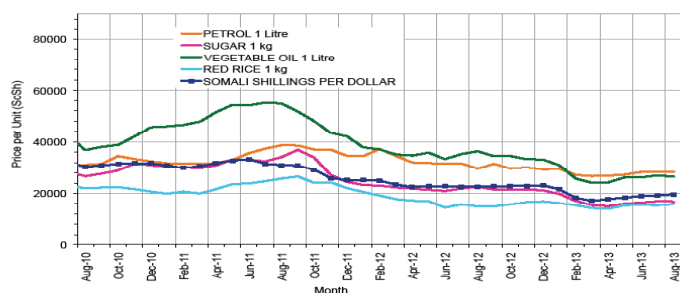


Figure 24: Goat Local Quality

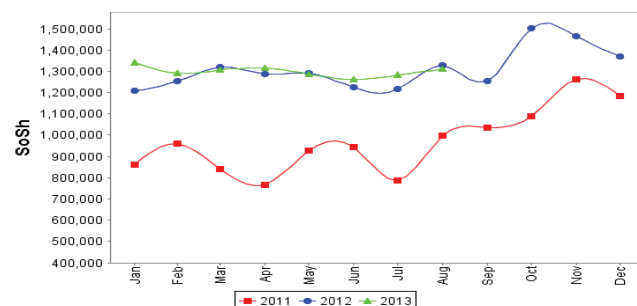


Figure 25: Exchange Rate

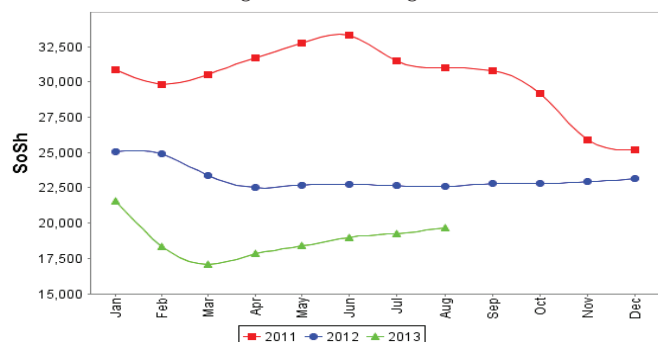
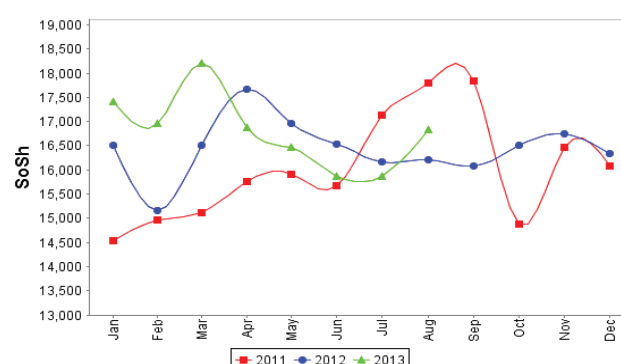


Figure 26: Water Drum



Regional analysis: Banadir Region

Indicator	5-Year Average (2008-2012)	Aug-12	Jul-13	Aug-13 Nominal Price	Aug-13 Real (Deflated) Price	% Change Same Month Previous Year	% Change Previous Month	% Change 5-year avrg (2008-2012)
Imported Commodities Prices								
Diesel 1 litre	32,759	26,600	19,867	20,250	10,668	-24%	2%	-38%
Imported Red Rice 1kg	23,520	14,167	12,867	12,333	6,458	-13%	-4%	-48%
Petrol 1 litre	30,181	26,133	20,600	20,417	10,756	-22%	-1%	-32%
Sugar	25,766	19,767	13,867	13,625	7,145	-31%	-2%	-47%
Vegetable Oil 1 litre	45,291	33,917	22,900	22,708	11,975	-33%	-1%	-50%
Wheat Flour 1kg	20,831	13,100	12,683	12,208	6,391	-7%	-4%	-41%
Wheat Grain 1kg	11,868	11,673	7,333	7,611	3,947	-35%	4%	-36%
Cereal Prices								
Red Sorghum 1kg	9,591	5,437	6,041	5,642	2,900	4%	-7%	-41%
White Maize 1kg	11,444	8,820	7,719	7,373	3,820	-16%	-4%	-36%
Livestock & Livestock Product Prices								
Camel Local Quality (Head)	17,025,000	-	-	-	-	-	-	-
Cattle Local Quality (Head)	5,382,500	-	-	-	-	-	-	-
Fresh Camel Milk 1 litre	18,588	21,607	21,617	20,992	11,062	-3%	-3%	13%
Goat Export Quality (Head)	1,805,000	2,600,000	2,300,000	3,000,000	1,595,092	15%	30%	66%
Goat Local Quality (Head)	1,642,000	2,080,000	2,195,000	2,301,250	1,223,545	11%	5%	40%
Other Essential Items								
Charcoal 50kg	155,846	183,533	196,833	183,125	97,273	0%	-7%	18%
Cowpeas 1 kg	24,366	19,160	13,107	11,950	6,254	-38%	-9%	-51%
Unskilled Labor Wage Rate	72,969	104,667	115,000	115,417	61,271	10%	0%	58%
Firewood Bundle	22,284	7,737	7,720	7,900	4,101	2%	2%	-65%
Local Sesame Oil 1 litre	66,756	56,200	59,000	59,250	31,405	5%	0%	-11%
Exchange Rate (Somali Shilling per USD)	29,920	22,444	19,240	19,479	10,258	-13%	1%	-35%
Terms of Trade								
Labour Wage (Daily)/ Cereal (Maize(Kg))	6	12	15	16	-	32%	5%	146%
Local Goat (Head)/ Cereal (Maize(Kg))	143	236	284	312	-	32%	10%	118%
Price Indices								
Consumer Price Index	-	215	187	188	-	-12%	1%	-

Figure 27: Trends in Cereal Prices

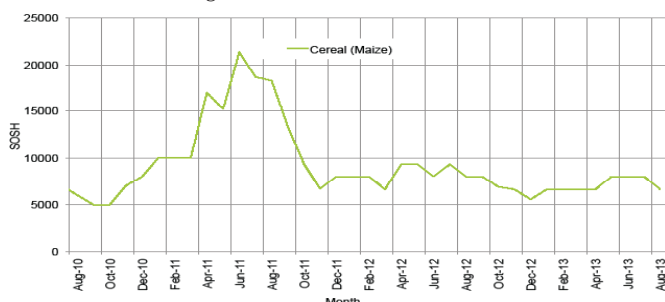


Figure 28: Bakara: Trends in Wage Rates and Relative Purchasing Power

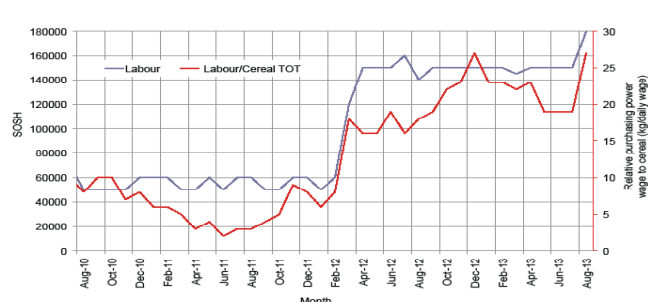


Figure 29: Imported Commodity Prices Compared to Exchange Rate

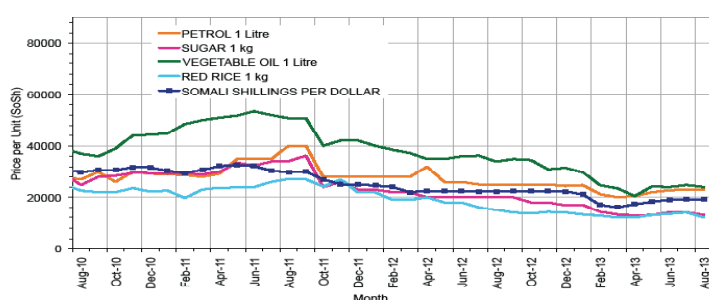


Figure 30: Goat Local Quality

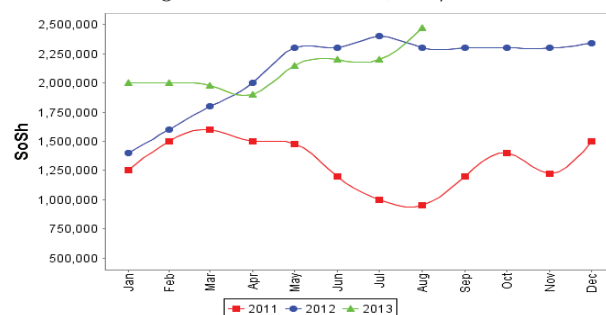


Figure 31: Exchange Rate

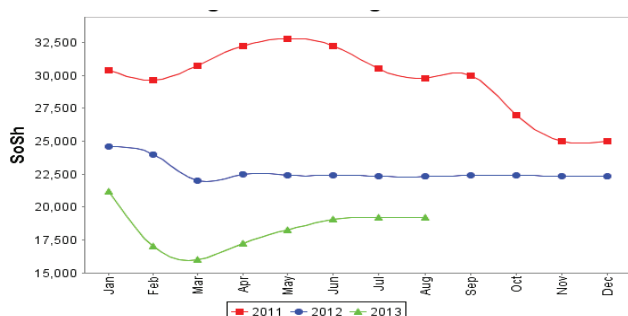
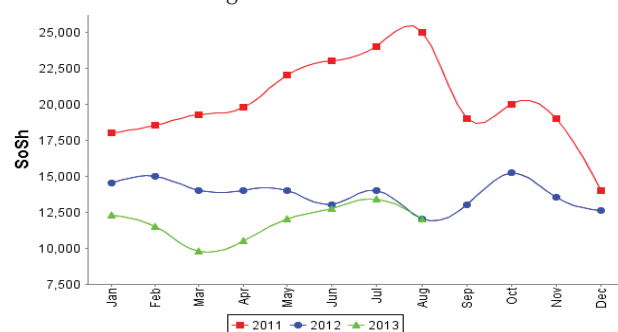


Figure 32: Wheat Flour



Regional analysis: Central Regions

Indicator	5-Year Average (2008-2012)	Aug-12	Jul-13	Aug-13 Nominal Price	Aug-13 Real (Deflated) Price	% Change Same Month Previous Year	% Change Previous Month	% Change 5-year avrg (2008-2012)
Imported Commodities Prices								
Diesel 1 litre	36,844	30,620	27,780	27,300	13,719	-11%	-2%	-26%
Imported Red Rice 1kg	31,570	20,800	19,210	19,650	9,847	-6%	2%	-38%
Petrol 1 litre	31,190	26,600	25,700	24,800	12,454	-7%	-4%	-20%
Sugar	29,444	24,840	21,530	21,600	10,834	-13%	0%	-27%
Vegetable Oil 1 litre	56,320	46,200	44,100	44,900	22,628	-3%	2%	-20%
Wheat Flour 1kg	26,306	17,000	16,920	17,450	8,733	3%	3%	-34%
Wheat Grain 1kg	20,275	15,667	13,000	13,188	6,576	-16%	1%	-35%
Cereal Prices								
Red Sorghum 1kg	14,749	11,820	11,260	11,650	5,797	-1%	3%	-21%
White Maize 1kg	18,228	13,920	10,167	10,750	5,342	-23%	6%	-41%
Livestock & Livestock Product Prices								
Camel Local Quality (Head)	7,535,000	9,875,000	11,731,250	11,625,000	5,884,426	18%	-1%	54%
Cattle Local Quality (Head)	2,116,666	-	-	-	-	-	-	-
Fresh Camel Milk 1 litre	41,858	34,320	26,670	27,550	13,846	-20%	3%	-34%
Goat Export Quality (Head)	1,279,633	1,516,667	1,498,750	1,472,500	745,273	-3%	-2%	15%
Goat Local Quality (Head)	909,120	1,280,000	1,221,500	1,162,500	588,353	-9%	-5%	28%
Other Essential Items								
Charcoal 50kg	175,440	173,000	183,600	174,000	87,978	1%	-5%	-1%
Cowpeas 1 kg	35,832	24,560	17,080	16,700	8,353	-32%	-2%	-53%
Unskilled Labor Wage Rate	79,590	86,000	92,700	87,500	44,192	2%	-6%	10%
Firewood Bundle	26,472	34,000	33,850	32,700	16,453	-4%	-3%	24%
Local Sesame Oil 1 litre	99,332	89,500	84,200	86,000	43,433	-4%	2%	-13%
Exchange Rate (Somali Shilling per USD)	30,997	22,018	21,033	20,455	10,254	-7%	-3%	-34%
Terms of Trade								
Labour Wage (Daily)/ Cereal (Rice(Kg))	3	4	5	4	-	8%	-8%	77%
Local Goat (Head)/ Cereal (Rice(Kg))	29	62	64	59	-	-4%	-7%	105%
Camel (Head)/Cereal (Kg)	239	475	611	592	-	25%	-3%	148%
Price Indices								
Consumer Price Index	-	213	190	198	-	-7%	4%	-

Figure 33: Trends in Cereal Prices

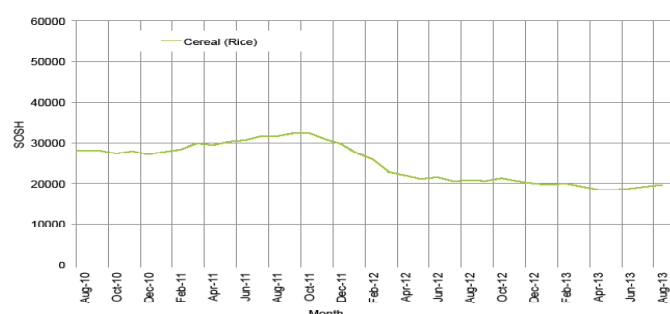


Figure 34: Trends in wage rates and relative purchasing power

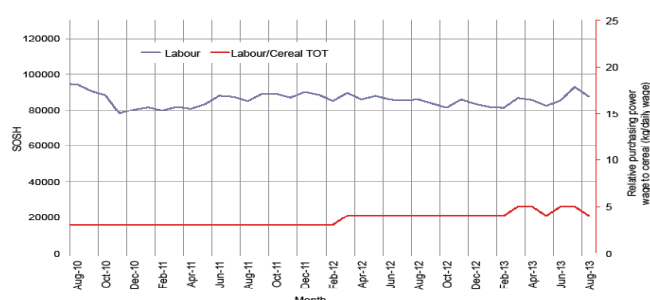


Figure 35: Imported Commodity Prices Compared to Exchange Rate

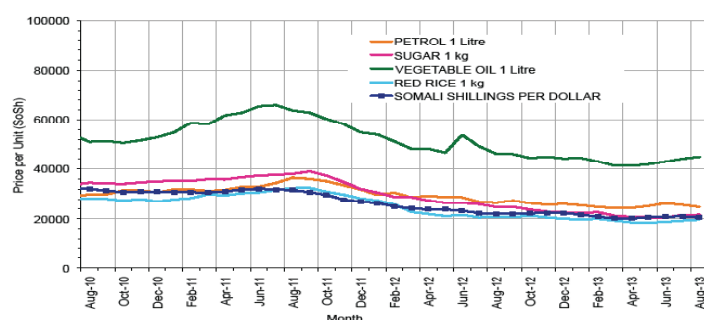


Figure 36: Goat Local Quality

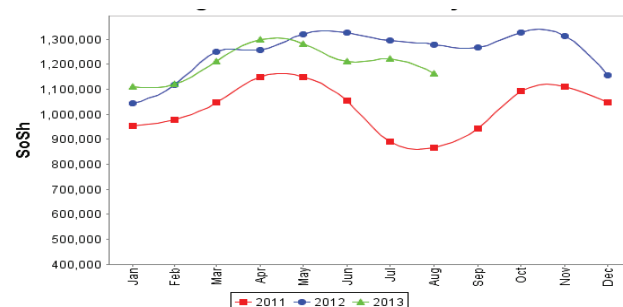


Figure 37: Exchange Rate

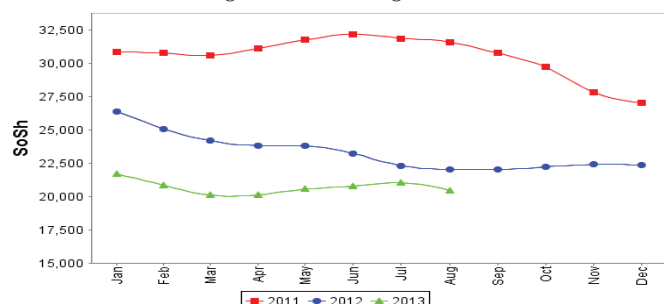


Figure 38: Water Drum



Regional analysis: Northeast Regions

Indicator	5-Year Average (2008-2012)	Aug-12	Jul-13	Aug-13 Nominal Price	Aug-13 Real (Deflated) Price	% Change Same Month Previous Year	% Change Previous Month	% Change 5-year avg (2008-2012)
Imported Commodities Prices								
Diesel 1 litre	32,397	25,500	23,350	23,975	10,647	-6%	3%	-26%
Imported Red Rice 1kg	26,113	18,875	15,938	16,763	7,414	-11%	5%	-36%
Petrol 1 litre	28,955	23,250	20,850	21,650	9,604	-7%	4%	-25%
Sugar	27,260	22,750	18,688	18,988	8,411	-17%	2%	-30%
Vegetable Oil 1 litre	52,315	43,313	35,013	34,875	15,532	-19%	0%	-33%
Wheat Flour 1kg	24,285	17,438	15,125	16,025	7,083	-8%	6%	-34%
Wheat Grain 1kg	30,262	23,875	25,800	26,500	11,778	11%	3%	-12%
Cereal Prices								
Red Sorghum 1kg	22,389	23,250	19,800	20,600	9,134	-11%	4%	-8%
White Maize 1kg	20,820	21,500	20,000	21,600	9,582	0%	8%	4%
Livestock & Livestock Product Prices								
Camel Local Quality (Head)	11,897,125	15,993,750	15,530,000	15,791,250	7,078,182	-1%	2%	33%
Cattle Local Quality (Head)	6,240,000	7,875,000	8,125,000	7,500,000	3,361,706	-5%	-8%	20%
Fresh Camel Milk 1 litre	42,715	41,625	36,450	38,313	17,073	-8%	5%	-10%
Goat Export Quality (Head)	1,245,233	1,425,000	1,537,500	1,550,000	694,673	9%	1%	24%
Goat Local Quality (Head)	1,156,050	1,393,750	1,427,875	1,416,250	634,721	2%	-1%	23%
Other Essential Items								
Charcoal 50kg	294,000	367,500	379,125	373,875	167,486	2%	-1%	27%
Cowpeas 1 kg	43,394	39,167	28,767	29,150	12,966	-26%	1%	-33%
Unskilled Labor Wage Rate	109,492	122,500	125,000	125,000	55,930	2%	0%	14%
Firewood Bundle	30,992	46,250	50,625	49,375	22,032	7%	-2%	59%
Local Sesame Oil 1 litre	98,175	86,875	91,125	92,688	41,447	7%	2%	-6%
Exchange Rate (Somali Shilling per USD)	30,400	20,969	20,835	20,800	9,223	-1%	0%	-32%
Terms of Trade								
Labour Wage (Daily)/ Cereal (Rice(Kg))	4	6	8	7	-	15%	-5%	78%
Local Goat (Head)/ Cereal (Rice(Kg))	44	74	90	84	-	14%	-6%	91%
Price Indices								
Consumer Price Index	-	237	215	223	-	-6%	4%	-

Figure 39: Trends in Cereal Prices

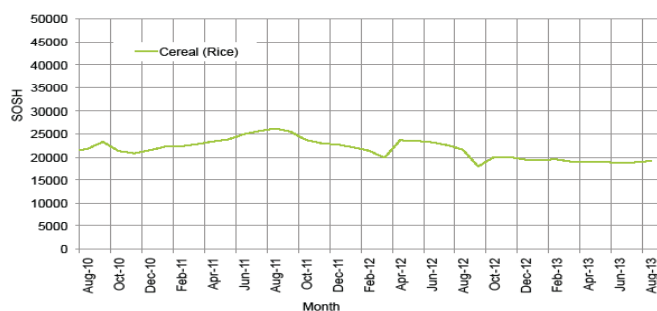


Figure 40: Trends in Wage Rates and Relative Purchasing Power

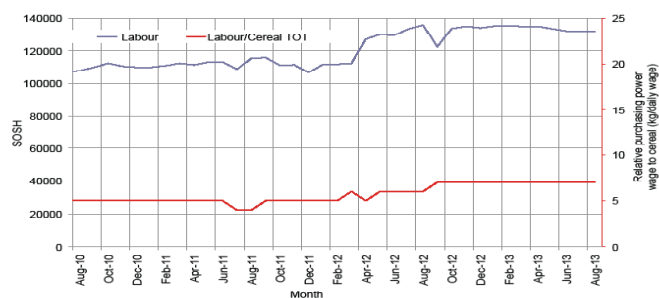


Figure 41: Imported Commodity Prices Compared to Exchange Rate

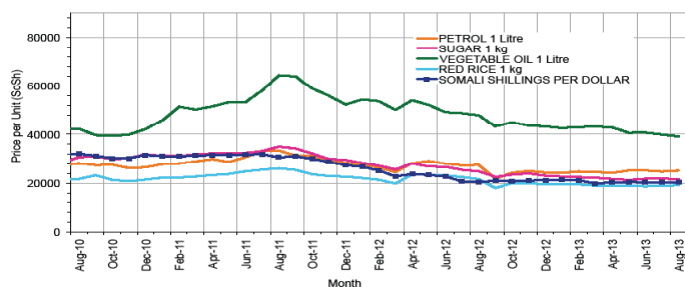


Figure 42: Goat Local Quality

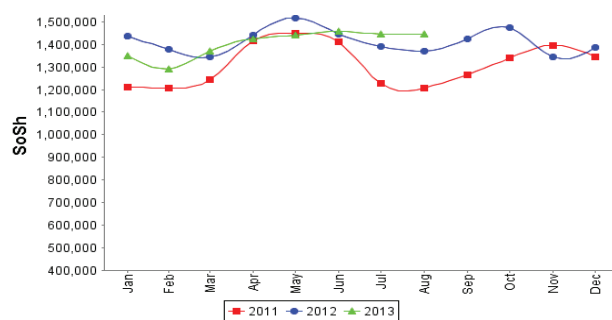


Figure 43: Exchange Rate

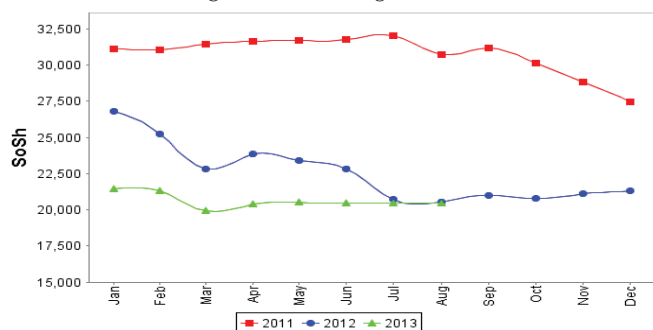
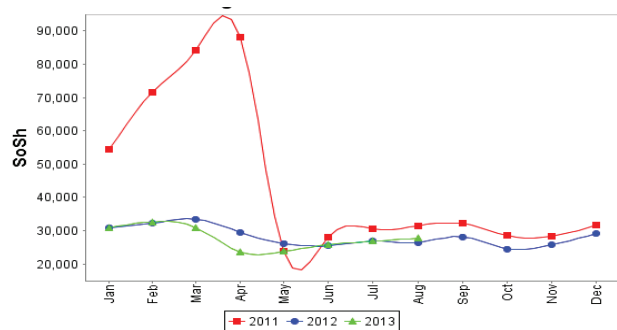


Figure 44: Water Drum



Regional analysis: Northwest Regions

Indicator	5-Year Average (2008-2012)	Aug-12	Jul-13	Aug-13 Nominal Price	Aug-13 Real (Deflated) Price	% Change Same Month Previous Year	% Change Previous Month	% Change 5-year avg (2008-2012)
Imported Commodities Prices								
Diesel 1 litre	6,253	6,880	6,767	6,860	5,665	0%	1%	10%
Imported Red Rice 1kg	5,614	4,585	4,900	5,120	4,203	12%	4%	-9%
Petrol 1 litre	6,622	7,090	7,100	7,160	5,917	1%	1%	8%
Sugar	5,834	6,040	5,640	5,620	4,623	-7%	0%	-4%
Vegetable Oil 1 litre	10,996	12,555	12,010	12,150	10,110	-3%	1%	10%
Wheat Flour 1kg	4,965	4,420	4,300	4,320	3,530	-2%	0%	-13%
Wheat Grain 1kg	4,066	3,488	3,875	3,625	2,946	4%	-6%	-11%
Cereal Prices								
White Sorghum 1kg	4,063	3,440	3,216	3,330	2,698	-3%	4%	-18%
Yellow Maize 1kg	4,280	3,745	3,625	3,700	3,009	-1%	2%	-14%
Livestock & Livestock Product Prices								
Camel Local Quality (Head)	1,996,491	2,666,333	4,108,333	4,000,000	3,361,245	50%	-3%	100%
Cattle Local Quality (Head)	1,407,816	1,853,500	2,443,000	2,517,500	2,115,446	36%	3%	79%
Fresh Camel Milk 1 litre	5,526	5,525	5,525	5,510	4,530	0%	0%	0%
Goat Export Quality (Head)	300,602	409,300	473,080	500,875	420,803	22%	6%	67%
Goat Local Quality (Head)	220,709	273,100	340,840	365,550	307,085	34%	7%	66%
Other Essential Items								
Charcoal 50kg	33,307	40,300	43,840	46,600	39,060	16%	6%	40%
Cowpeas 1 kg	9,533	9,563	9,438	9,250	7,673	-3%	-2%	-3%
Unskilled Labor Wage Rate	31,888	39,200	42,100	43,430	36,396	11%	3%	36%
Firewood Bundle	3,686	3,333	3,333	3,333	2,701	0%	0%	-10%
Local Sesame Oil 1 litre	24,140	25,000	29,038	29,500	24,690	18%	2%	22%
Exchange Rate (Somaliland Shilling per USD)	6,395	6,550	6,708	6,695	5,526	2%	0%	5%
Terms of Trade								
Labour Wage (Daily)/ Cereal (Rice(Kg))	6	9	9	8	-	-1%	-1%	49%
Local Goat (Head)/ Cereal (Rice(Kg))	39	60	70	71	-	20%	3%	82%
Price Indices								
Consumer Price Index	-	125	116	119	-	-5%	2%	-

Figure 45: Trends in Cereal Prices

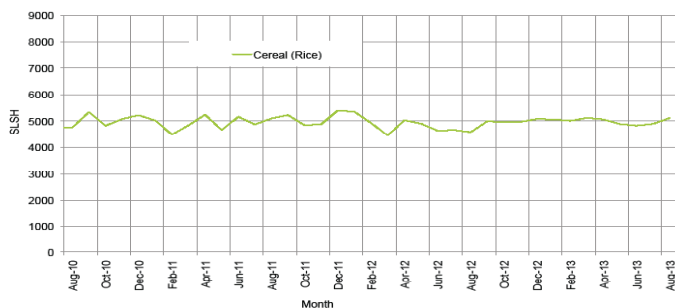


Figure 46: Trends in Wage Rates and Relative Purchasing Power

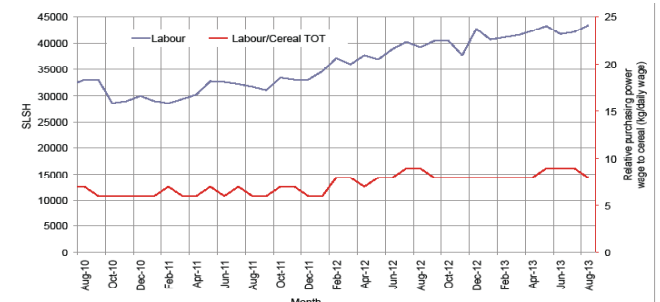


Figure 47: Imported Commodity Prices Compared to Exchange Rate

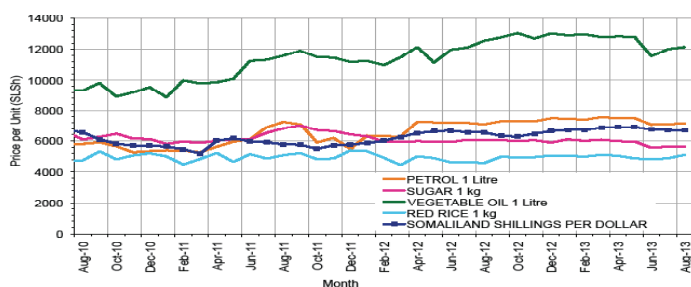


Figure 48: Goat Local Quality

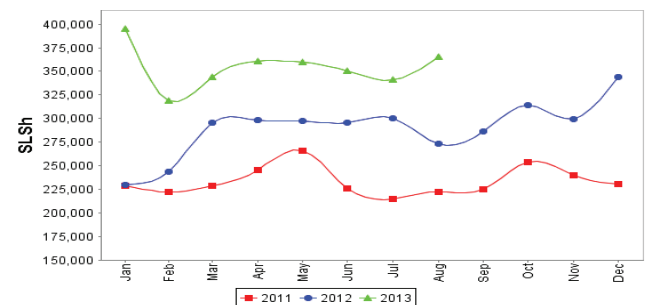


Figure 49: Exchange Rate

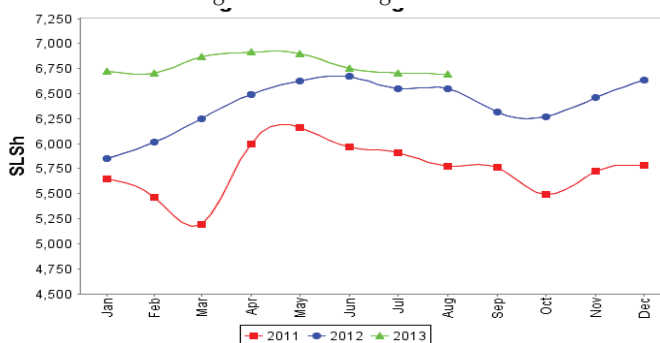
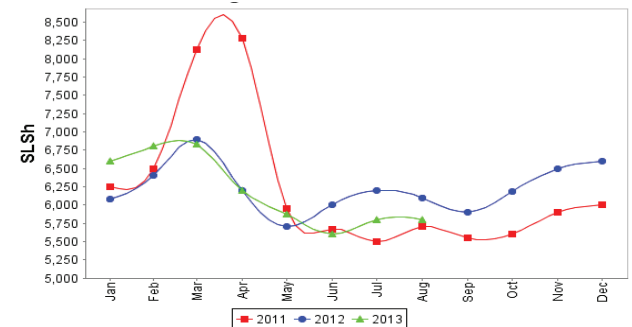


Figure 50: Water Drum



Trends in Livestock Exports

Table 2: Berbera Livestock Exports (Number of Heads)

	1994	1995	1996	1997	1998	1999	2000	2001	2002	2003	2004	2005	2006	2007	2008	2009	2010	2011	2012	2013 (Jan - Jul)
Shoats	1,572,656	2,683,597	2,376,646	2,814,495	957,224	2,048,136	1,601,083	51,546	341,711	563,107	859,404	1,023,795	1,017,242	1,350,054	1,219,519	1,556,003	2,584,810	3,104,684	3,219,584	1,062,159
Cattle	173,400	167,128	65,127	66,939	92,213	89,967	63,263	20,973	37,547	84,312	131,852	148,151	85,631	88,143	80,051	88,005	133,021	150,934	190,354	95,875
Camels	38,553	21,993	42,801	50,587	11,663	37,430	16,984	3,473	18,864	21,874	5,147	5,069	22,810	14,245	26,515	20,206	92,651	107,281	102,664	57,661

Figure 51: Berbera Livestock Exports (Number of Heads)

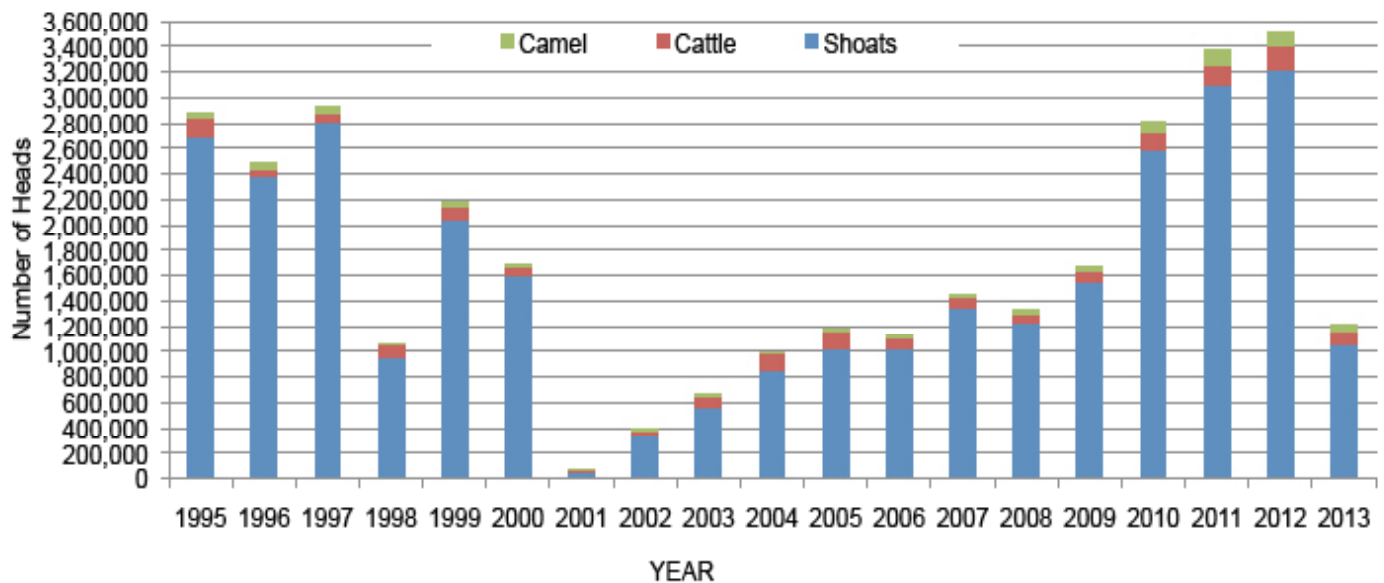
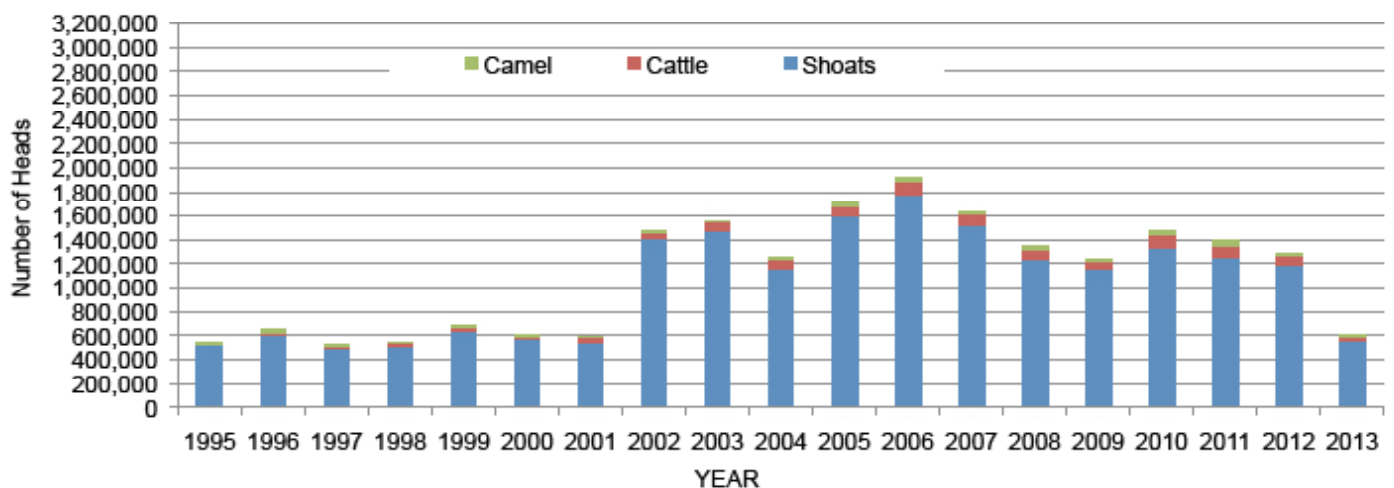


Table 3: Bossaso Livestock Exports (Number of Heads)

	1994	1995	1996	1997	1998	1999	2000	2001	2002	2003	2004	2005	2006	2007	2008	2009	2010	2011	2012	2013 (Jan - Jun)
Shoats	344,000	524,346	614,407	494,320	517,020	633,669	571,455	548,853	1,412,450	1,483,409	1,166,480	1,594,859	1,777,283	1,522,855	1,236,775	1,159,454	1,333,478	1,256,535	1,192,197	551,451
Cattle	1,450	8,795	15,335	17,831	29,492	36,586	27,604	42,248	53,313	71,328	79,994	91,910	104,595	89,190	78,046	67,385	103,808	99,058	76,043	45,276
Camels	5,397	8,392	20,462	14,599	3,938	15,544	8,177	1,950	9,720	4,259	2,488	26,109	33,724	27,580	27,639	15,331	36,865	45,878	22,288	9,827

Figure 52: Bossaso Livestock Exports (Number of Heads)

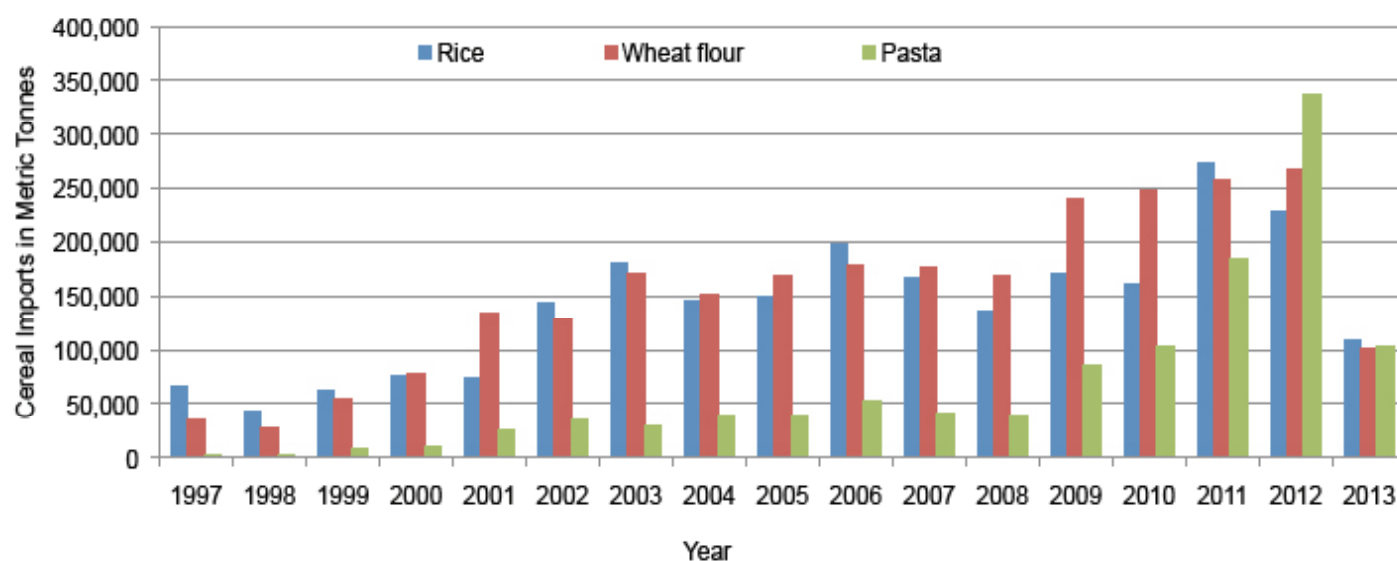


Trends in Cereal Imports

Table 4: Total Cereal Imports (Berbera, Bossaso, Mogadishu)

	1997	1998	1999	2000	2001	2002	2003	2004	2005	2006	2007	2008	2009	2010	2011	2012	2013*
Rice	66,419	43,410	63,464	75,687	74,729	144,600	180,614	146,567	150,017	198,101	166,626	136,007	171,472	161,415	272,877	227,955	108,770
Wheat flour	35,143	26,774	55,176	78,555	134,425	128,263	171,442	151,555	169,583	178,345	176,821	169,208	240,247	249,080	258,679	268,491	100,894
Pasta	2,510	2,455	8,544	11,071	26,702	35,425	29,273	38,749	39,153	52,815	41,331	38,441	86,372	102,373	184,849	337,878	103,066

Figure 53: Total Cereal Imports (Berbera, Bossaso and Mogadishu)



*Mogadishu data is up to March 2013; the data is from Elmaan Port.

*Berbera data is up to July 2013.

*Bossaso data is up to June 2013.