

# Market DataUpdate

August 2012



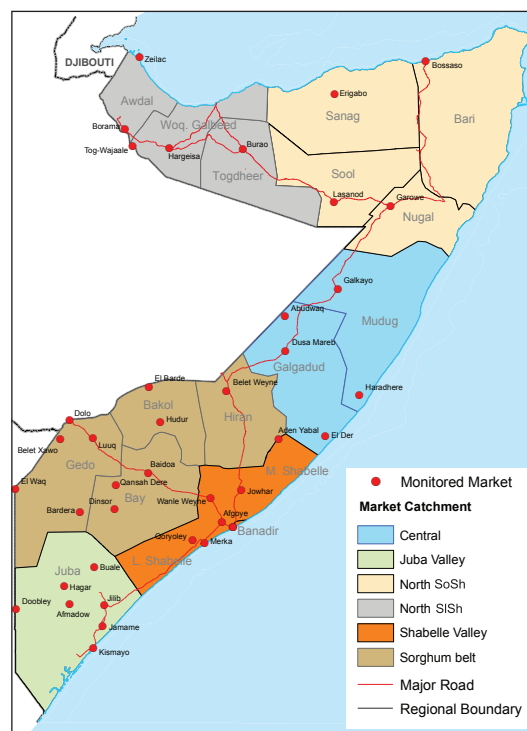
Food Security and Nutrition Analysis Unit - Somalia



Issued September 20<sup>th</sup>, 2012

## Highlights

- Inflation:** The monthly Consumer Price Index (CPI) rose slightly in the South, remained steady in North SoSh zone but fell marginally in North SiSh and Central regions. Annual inflation rates are significantly lower than their levels a year ago in Central and South but relatively stable in the North. The cost of living is significantly higher compared to the base period (March 2007) in SoSh areas, while it is moderately elevated in SiSh areas.
- Exchange rate** between local currencies (SoSh & SiSh) and the US dollar remained relatively stable. Compared to the same period a year ago, SiSh lost ground to the USD, whereas SoSh appreciated considerably. The appreciation of the SoSh is attributed to increased supply of dollars through humanitarian interventions, improved economic prospects and inward investments, particularly in Mogadishu. The weakened SiSh is due to increased supply and circulation of new currency notes.
- Local grain prices** increased in most markets of Bay, Bakool, Gedo and Lower Juba; remained stable in Hiran and Banadir; decreased moderately in Lower Shabelle; reduced significantly in Middle Juba and Middle Shabelle Regions. Below average Gu 2012 crop production and anticipated downscaling of food aid distribution led to the cereal price inflation. Sorghum prices sustained downward movements in Central and North SoSh zones but remained stable in North SiSh areas. Localized targeted food aid distribution and cross-border trade mobility mitigated the cost of cereals. Compared to a year ago, cereal prices are considerably lower in the South and Central zones and more stable in the North.
- Prices of most imported commodities** extended stable or declining trends witnessed in the past months. However, these commodities cost slightly more in Juba Regions due to restricted flows from Mogadishu Port, closure of Kismayo Port, and high taxation levels at militia erected and controlled road blocks. Compared to the same period last year, imported commodity prices are significantly reduced. The decline in prices of imported commodities is mainly attributed to the strengthened SoSh, improved Mogadishu Port operations and ongoing humanitarian assistance.
- Livestock prices** were mixed, exhibiting slight monthly increases in most markets but decreasing marginally in Banadir while remaining stable in Central. Compared to the same month last year, livestock prices are significantly higher across all regions. The annual price appreciation was mainly due to improved body conditions, low supply of saleable stock and high export demand from the oncoming Hajj period. Monthly milk prices were generally stable on the backdrop of near normal supply.
- Labour wages** were mixed in August. Labour flight to Mogadishu and normal seasonal decline in agricultural labour opportunities were the main drivers of the changes in labour rates. Labour wages are significantly higher compared to their levels a year ago in most markets.
- Terms of Trade (ToT)** between labour wage/ local and cereals exhibited mixed trends in most markets. The purchasing power has improved when compared to a year ago on the backdrop of lower cereal prices, improved goat prices and higher labour wages (Table 1).



This Market Data Update is a monthly report that presents a compilation of tabulated graphical market information produced regularly as part of the monthly monitoring process.

The weekly price data is collected from 47 main markets throughout Somalia since 1995.

Market analysis is an integral part of all of FSNAU's Annual Food Security Projections and seasonal technical reports (Technical Reports on FSNAU Post Gu and Deyr Analysis).

This data is available online on [www.fsnau.org/ids](http://www.fsnau.org/ids).

Technical and Managerial Support



Funding Agencies



# Regional Market Highlights

- **Juba Valley:** Local cereal, imported food and livestock prices increased slightly over the month of August. Prices are significantly lower than a year ago for imported food and local cereals, but slightly higher for livestock. Annual comparisons of ToT between labor and cereals indicate significant improvement in purchasing power. However, the ToT (10Kg/daily wage rate) was one kg less than it was the previous month.
- **Sorghum Belt:** Over the last month, local cereal prices maintained their levels in Hiran but increased slightly in Bay (5%), Bakool (9%) and Gedo (10%). Imported commodity and livestock prices were generally stable over the last month. Prices of imports and local cereals are significantly lower compared to their levels a year ago while those of livestock are significantly higher. The ToT between labour and cereals reduced (7%) as a result of increased cereal prices. However, when compared to a year ago, the ToT is 3-times higher (13kg/daily wage) in Bay region and 1-2 times higher in the rest of the Sorghum Belt regions.
- **Shabelle Valley:** In August 2012, the prices of imported food and maize showed slight monthly decreases, while livestock prices increased. Reduced cereal prices coupled with slight improvement in labour wages enhanced the monthly ToT by 17 percent (currently standing at 10kg for a day's labour). Prices of most imported commodities and cereals are significantly lower when compared to the same month a year ago. Livestock prices, on the other hand, are significantly higher over the same period.
- **Central:** Prices of imported food and red sorghum decreased slightly in most markets in August. Annual comparisons indicate significant decreases in the prices of all items except livestock, which are significantly higher. ToT (rice/ local goat) decreased marginally (2%) over the month of August but are significantly elevated (130%) when compared to the same month last year, currently standing at 62kg/local goat.
- **Northeast:** Slight reduction recorded for prices of imported food, sorghum and livestock over the previous month. Annual price comparisons show significant decline for imported commodities and local cereals and increase for livestock. ToT (rice/ local goat) reduced marginally over the month of August but is significantly elevated (37%) when compared to the same month last year, currently standing at 63kg/local goat.
- **Northwest:** Monthly prices of yellow maize increased while those of livestock and imported commodities decreased slightly. Annual price comparison indicates slightly lower prices for imports and cereals and considerably inflated prices for livestock. The monthly ToT between local white sorghum and wages did not change from the previous month but increased significantly (75%) when compared to the same month in 2011.
- **Banadir:** In the last month, the prices declined slightly for imported commodities, red sorghum and livestock. With the exception of currently highly valued livestock, prices of most items are significantly below their levels a year ago. ToT cereal (maize/ labour wage) reduced by 1 kg from 13 kgs a month ago, but is 2-times as higher than in the same month in 2011.

**Table 1: Monthly and Annual Changes in Terms of Trade**

ToT: Mt of Cereals (kg) per Daily Labour Wage Rate Region	Cereal used	August 2011	July 2012	August 2012	Monthly change	Annual change
		(kg/daily wage)	(kg/daily wage)	(kg/daily wage)	(%)	(%)
Banadir	White Maize	4	13	12	-8%	200%
Bay	Red Sorghum	3	15	13	-13%	333%
Bakool	Red Sorghum	4	5	4	-20%	0%
Gedo	Red Sorghum	6	14	14	0%	133%
Hiraan	White Maize	8	14	14	0%	75%
Juba	White Maize	3	11	10	-9%	233%
Shabelle	White Maize	4	8	10	25%	150%
Northeast	Red Sorghum	4	5	6	20%	50%
Northwest	White Sorghum	6	10	10	0%	67%
Central	Red Sorghum	4	7	7	0%	75%

# International Market Highlights

**Diesel:** Crude oil prices in Abu Dhabi (Dubai), the main source of Somalia's oil imports, showed a nine percent increase to settle at 109/ barrel in August<sup>1</sup>, extending two months consecutive price upsurge. According to the International Energy Agency's Oil Market Report (September 2012), concerns about supply, as well as optimism that central banks would stimulate growth<sup>2</sup> and secure the euro, drove up oil prices to record highs during August<sup>3</sup>.

**In Somalia Port Cities (Bossaso and Mogadishu), diesel prices remained stable when compared to July 2012 but declined significantly (28-44%) over the last year, the latter supported by stronger domestic currency (SoSh) and increased supplies following opening up of Mogadishu Port. The annual price decline is also supported by price differential analysis- the gap between domestic diesel and global crude oil prices narrowed down from 35-41% in August 2011 to 12-26% in August 2012**

**Rice:** The benchmark Thai rice export price (Thai A1 Super 1/ B)<sup>4</sup> remained steady in August, averaging USD 532 per tonne; but this price is still 13 percent higher than the same month in 2011. Renewed import demand sustained monthly international rice quotations.

**Prices of imported rice in Bossaso and Mogadishu ports in August declined by 4-7 percent from the previous month. The decline was particularly significant (44-45%) when compared to the same month a year ago, supported by stronger domestic currency and improved port operations (Mogadishu). The gap between international and domestic rice markets narrowed down in both towns; from 74-94% in August 2011 to 26-48% in August this year.**

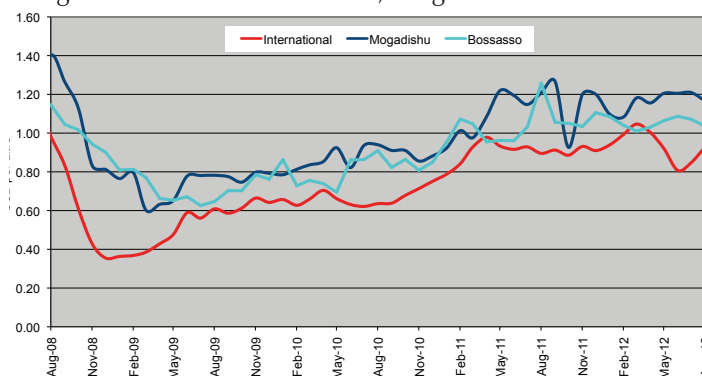
**Sugar:** The FAO Sugar Price Index<sup>5</sup> averaged 297 points in August, down 27.7 points (8.5 percent) from July, and 97 points (25 percent) from August last year. This month's sharp fall in sugar prices reflects improved production outlook amid more favourable weather conditions in Brazil, the world's largest sugar exporter, which was supportive to sugarcane harvesting. In addition, resurgence of monsoon rains in India, the world's second-biggest producer of sugar, stimulated a sound recovery in sugarcane acreage area and will help boost yields and production of summer-planted crops which were affected by the weak rain at the beginning of the monsoon season.

**Sugar prices have reduced in the local port markets of Somalia, dipping slightly over the previous month but significantly (42%) when compared to the same period in 2011, the latter attributable to higher supply of through commercial imports and humanitarian assistance.**

**Cooking Oil:** the FAO Oils/Fats Price Index<sup>6</sup> averaged 226 points in August, unchanged from July, thus staying above the ten year average trend, although still eight percent below 2008 and 2011 highs. Similar to last month, additional gains in soybean oil prices and strengthening quotations for sunflower and rapeseed oils have been offset by persistent weakness in palm oil values.

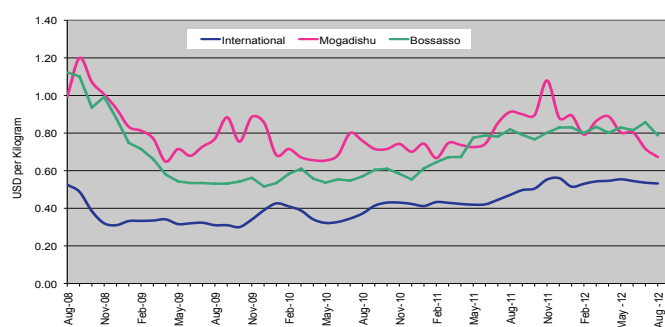
**International price transmission in cooking oil is not explicitly evident in port cities of Somalia. Specifically, vegetable oil prices remained relatively stable over the previous month in Bosasso and Mogadishu but showed a significant annual decline (32-33%) in on the backdrop of on-going humanitarian interventions and improved port operations.**

Figure 1: Diesel Prices: Dubai, Mogadishu and Bossaso



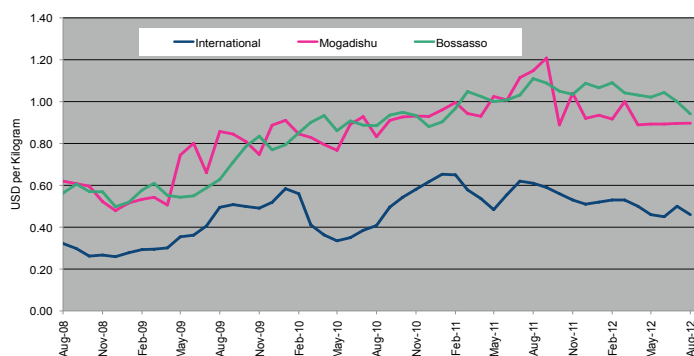
Source: FAO Statistics, FEWSNET and FSNAU Market Price Monitoring System, 2012

Figure 2: Rice Prices: Bangkok FOB, Mogadishu and Bossaso Markets



Source: FAO Statistics, FEWSNET and FSNAU Market Price Monitoring System, 2012

Figure 3: Sugar Prices: International, Mogadishu and Bossaso Markets



Source: International Sugar Organization, FEWSNET and FSNAU Market Price Monitoring System, 2012

<sup>1</sup> Weekly Abu Dhabi Murban Spot Price FOB (Dollars per Barrel), US Energy Information Administration, [http://www.eia.doe.gov/dnav/pet/pet\\_pri\\_wco\\_k\\_w.htm](http://www.eia.doe.gov/dnav/pet/pet_pri_wco_k_w.htm)

<sup>2</sup> By adopting expansionary monetary policies

<sup>3</sup> International Energy Agency (IEA) Monthly Oil Market Report, August, 2012; <http://omrpublic.iea.org/currentissues/full.pdf>; [www.oilmarketreport.org](http://www.oilmarketreport.org)

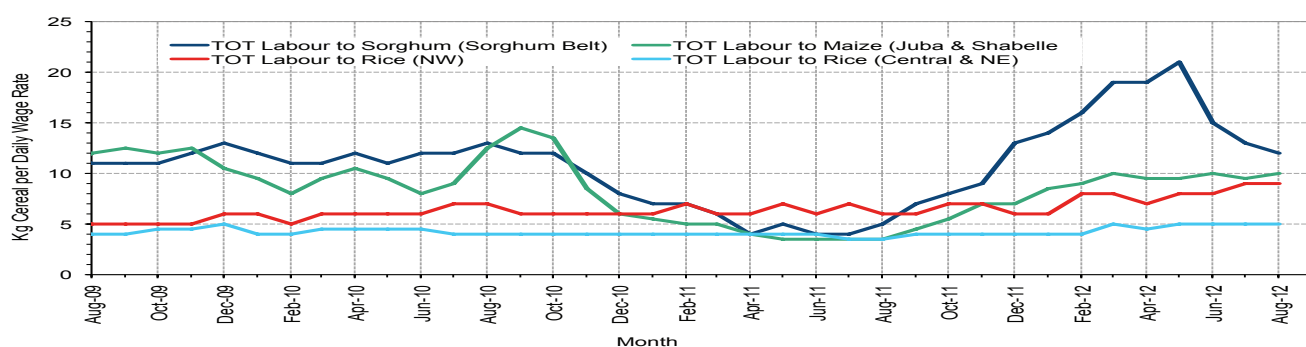
<sup>4</sup> Main cereal import in Somalia

<sup>5</sup> The World Food Situation: The FAO Food Price Index September 2012

<sup>6</sup> Ibid

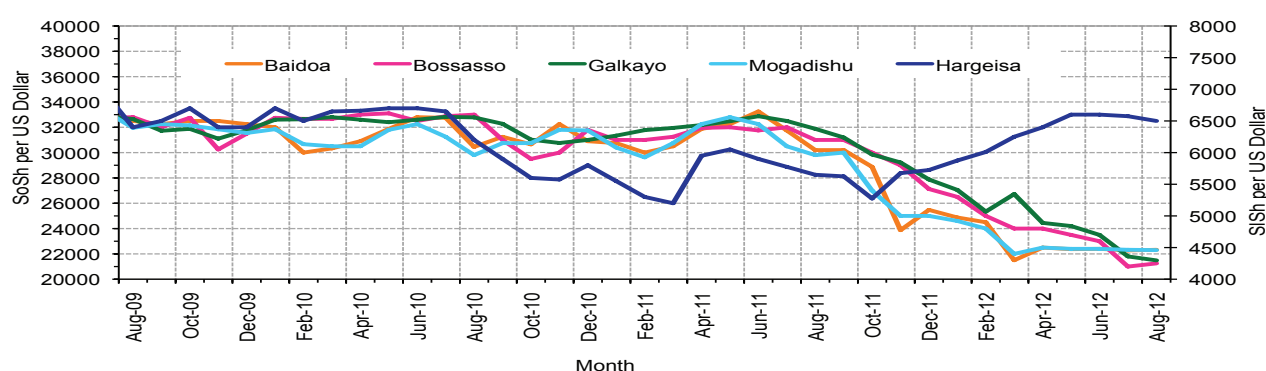
# National Trends: CPI, Exchange Rates, Cereal Prices and Relative Purchasing Power

Figure 4: Terms of Trade between wage rates and selected cereals



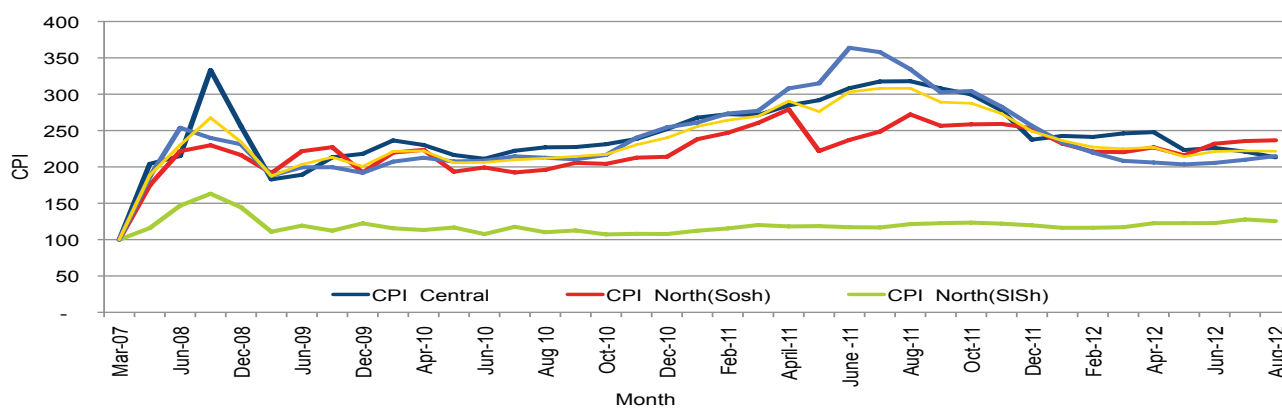
\* Purchasing power showed mixed trends

Figure 5: Monthly Exchange Rate for Selected Regions (SoSh and SiSh to USD)



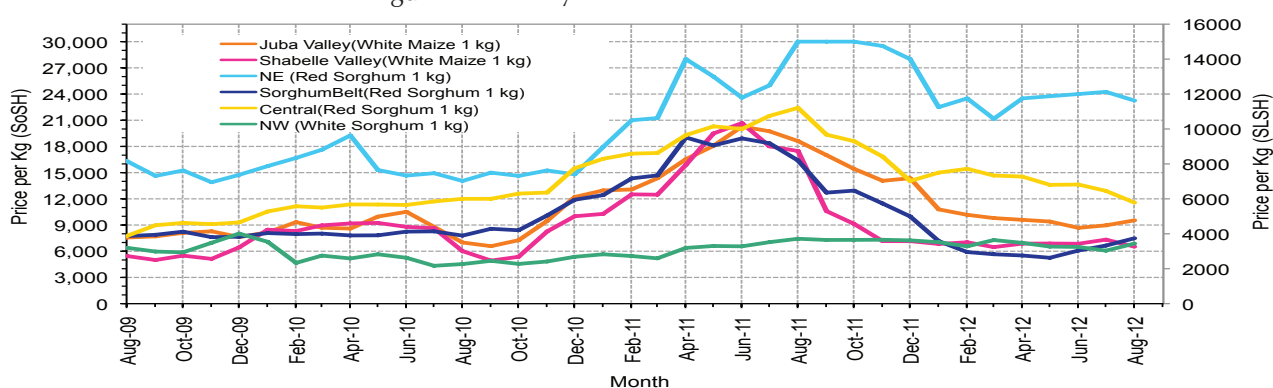
\*Local currencies largely stable against the greenback (USD) in August 2012.

Figure 6: Monthly Trends in Consumer Price Index (CPI, March 2007=100)



\*Inflation rose marginally in all the zones except for slight dip in Central

Figure 7: Monthly Trends in Local Cereal Prices



\*Trends in local cereal prices were mixed in August 2012

# Regional analysis: Juba Regions

Indicator	Aug-11	Jul-12	Aug-12 Nominal Price	Aug-12 Real (Deflated) Price	% Change Same Month Previous Year	% Change Previous Month	% Change 5-year avrg (2003-07)
<b>Imported Commodities Prices</b>							
Diesel 1 litre	39,429	33,071	33,893	15,671	-14%	2%	152%
Imported Red Rice 1kg	24,607	17,500	18,036	8,293	-27%	3%	101%
Petrol 1 litre	36,643	34,571	35,571	16,452	-3%	3%	116%
Sugar	36,750	23,107	22,857	10,536	-38%	-1%	148%
Vegetable Oil 1 litre	57,393	35,607	37,500	17,350	-35%	5%	97%
Wheat Flour 1kg	25,089	16,500	17,143	7,877	-32%	4%	100%
Wheat Grain 1kg	20,000	-	-	-	-	-	-
<b>Cereal Prices</b>							
Red Sorghum 1kg	-	5,000	6,500	-	-	30%	203%
White Maize 1kg	18,614	8,964	9,536	4,337	-49%	6%	260%
<b>Livestock &amp; Livestock Product Prices</b>							
Camel Local Quality (Head)	6,979,375	9,122,833	9,396,250	4,372,206	35%	3%	199%
Cattle Local Quality (Head)	1,955,000	3,559,542	3,636,250	1,691,937	86%	2%	137%
Fresh Camel Milk 1 litre	15,214	19,500	19,893	9,157	31%	2%	254%
Goat Export Quality (Head)	890,000	1,691,250	1,833,571	853,106	106%	8%	351%
Goat Local Quality (Head)	576,607	1,129,750	1,220,357	567,762	112%	8%	335%
<b>Other Essential Items</b>							
Charcoal 50kg	63,571	82,679	76,786	35,630	21%	-7%	163%
Cowpeas 1 kg	32,233	21,786	22,571	10,403	-30%	4%	266%
Unskilled Labor Wage Rate	63,143	98,464	93,250	43,292	48%	-5%	216%
Firewood Bundle	5,857	9,000	9,000	4,088	54%	0%	330%
Local Sesame Oil 1 litre	89,500	65,071	67,500	31,309	-25%	4%	210%
Exchange Rate (Somali Shilling per USD)	30,654	22,293	22,389	10,318	-27%	0%	40%
<b>Construction Materials*</b>							
Cement 50kg	345,000	312,571	322,143	149,801	-7%	3%	-
Cooking Pot Aluminium 7 Litre	356,667	292,679	286,607	133,265	-20%	-2%	-
Galvanised Iron Sheet Ga 26	177,292	129,429	130,357	60,558	-26%	1%	-
Hollow Concrete Block 10cm x 20cm x 40cm	20,000	15,000	15,000	6,880	-25%	0%	-
Non Collapsible Jerrycan 10 Litre	34,500	34,000	34,000	15,721	-1%	0%	-
Plastic Tarpaulin 14m x 5 m	503,333	307,083	308,750	143,569	-39%	1%	-
Roofing Nails 15Kg	819,821	807,857	807,857	375,816	-1%	0%	-
Timber 2in x 4in x 20ft	328,375	265,375	265,500	123,444	-19%	0%	-
Woven Dry Raised Blanket 150cm x 200cm	-	74,444	78,083	36,234	-	5%	-
<b>Terms of Trade</b>							
Labour Wage (Daily)/ Cereal (Maize(Kg))	3	11	10	-	188%	-11%	-12%
Local Goat (Head)/ Cereal (Maize(Kg))	31	126	128	-	313%	2%	21%
<b>Price Indices</b>							
Consumer Price Index	334	210	215	-	-36%	2%	-
Purchasing Power Index	0.30	0.48	0.47	-	56%	-2%	-

\* Data has been collected since May 2010

Figure 8: Imported commodity prices compared to exchange rates

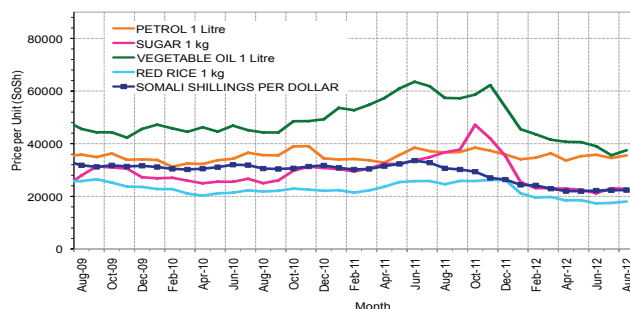


Figure 9: Trends in wage rates, staple cereal prices and relative purchasing power

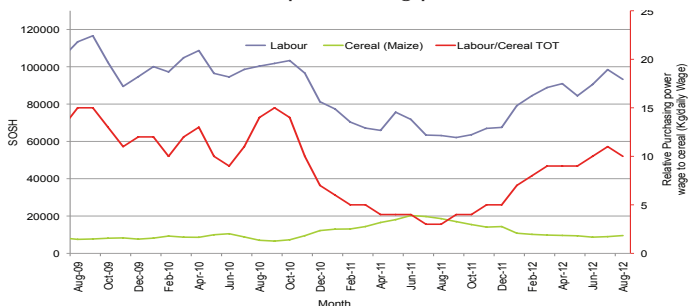


Figure 10: Goat Local Quality

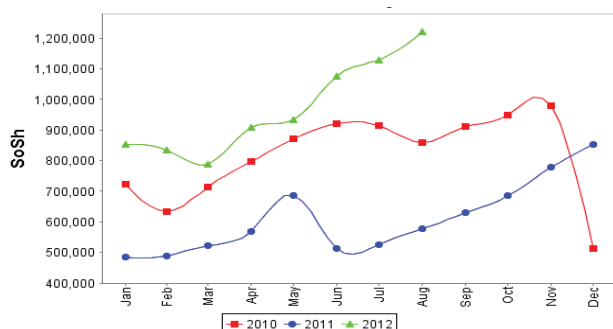


Figure 11: Exchange Rate

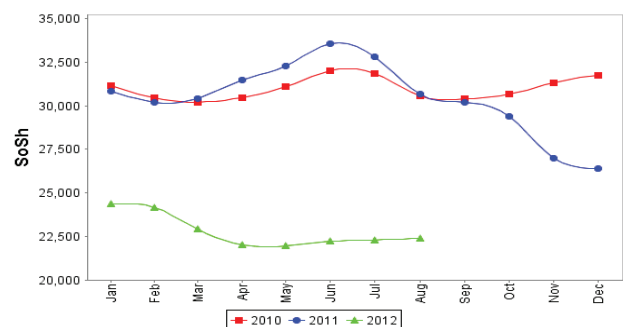


Figure 12: Water Drum

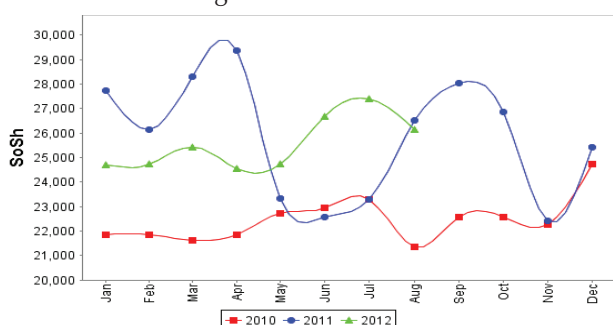
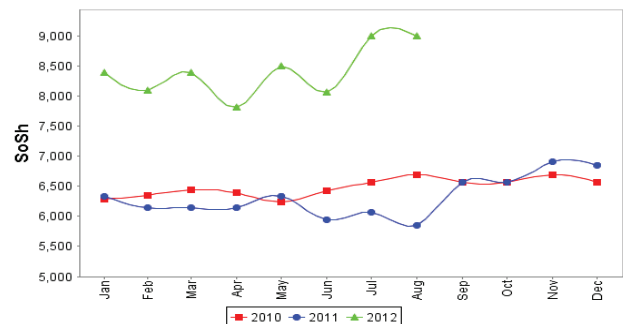


Figure 13: Firewood Bundle





# Regional analysis: Sorghum Belt Regions (Bay, Bakool, Gedo and Hiran)

Indicator	Aug-11	Jul-12	Aug-12 Nominal Price	Aug-12 Real (Deflated) Price	% Change Same Month Previous	% Change Previous Month	% Change 5-year avrg (2003-07)
<b>Imported Commodities Prices</b>							
Diesel 1 litre	43,536	32,682	31,773	14,685	-27%	-3%	159%
Imported Red Rice 1kg	28,464	19,900	19,445	8,948	-32%	-2%	123%
Petrol 1 litre	39,795	34,318	33,500	15,488	-16%	-2%	122%
Sugar	35,591	23,795	23,273	10,729	-35%	-2%	141%
Vegetable Oil 1 litre	64,964	44,750	45,864	21,242	-29%	2%	150%
Wheat Flour 1kg	25,427	18,145	17,909	8,233	-30%	-1%	114%
Wheat Grain 1kg	14,825	10,593	11,579	5,288	-22%	9%	178%
<b>Cereal Prices</b>							
Red Sorghum 1kg	16,391	6,650	7,485	3,383	-54%	13%	256%
White Maize 1kg	16,609	8,793	9,155	4,160	-45%	4%	233%
<b>Livestock &amp; Livestock Product Prices</b>							
Camel Local Quality (Head)	6,378,727	12,005,000	12,796,750	5,954,543	101%	7%	280%
Cattle Local Quality (Head)	1,881,500	3,631,250	3,823,438	1,779,040	103%	5%	165%
Fresh Camel Milk 1 litre	26,364	31,214	31,568	14,589	20%	1%	371%
Goat Export Quality (Head)	1,130,318	1,706,818	1,716,818	798,778	52%	1%	308%
Goat Local Quality (Head)	590,273	1,242,727	1,243,523	578,542	111%	0%	375%
<b>Other Essential Items</b>							
Charcoal 50kg	112,864	144,977	140,227	65,151	24%	-3%	318%
Cowpeas 1 kg	40,575	21,919	21,844	10,065	-46%	0%	280%
Unskilled Labor Wage Rate	81,705	83,545	87,795	40,753	7%	5%	342%
Firewood Bundle	5,455	6,545	6,455	2,904	18%	-1%	274%
Local Sesame Oil 1 litre	83,714	67,714	66,042	30,631	-21%	-2%	182%
Exchange Rate (Somali Shilling per USD)	31,168	22,220	22,255	10,256	-29%	0%	42%
<b>Construction Materials*</b>							
Cement 50kg	342,222	337,560	331,700	154,248	-3%	-2%	-
Cooking Pot Aluminium 7 Litre	297,778	264,444	260,833	121,272	-12%	-1%	-
Galvanised Iron Sheet Ga 26	220,636	174,000	174,000	80,866	-21%	0%	-
Hollow Concrete Block 10cm x 20cm x 40cm	10,750	11,250	11,750	5,368	9%	4%	-
Non Collapsible Jerrycan 10 Litre	53,750	56,795	54,523	25,271	1%	-4%	-
Plastic Tarpaulin 14m x 5 m	290,300	308,333	304,500	141,591	5%	-1%	-
Roofing Nails 15Kg	846,944	766,333	766,667	356,649	-9%	0%	-
Timber 2in x 4in x 20ft	217,571	285,000	291,406	135,498	34%	2%	-
Woven Dry Raised Blanket 150cm x 200cm	100,125	98,083	110,525	51,330	10%	13%	-
<b>Terms of Trade</b>							
Labour Wage (Daily)/ Cereal (Sorghum(Kg))	5	13	12	-	135%	-7%	24%
Local Goat (Head)/ Cereal (Sorghum(Kg))	36	187	166	-	361%	-11%	33%
<b>Price Indices</b>							
Consumer Price Index	334	210	215	-	-36%	2%	-
Purchasing Power Index	0.30	0.48	0.47	-	56%	-2%	-

\* Data has been collected since May 2010

Figure 14: Imported commodity prices compared to exchange rates

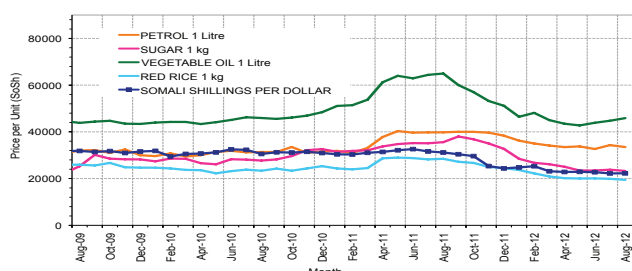


Figure 15: Trends in wage rates, staple cereal prices and relative purchasing power

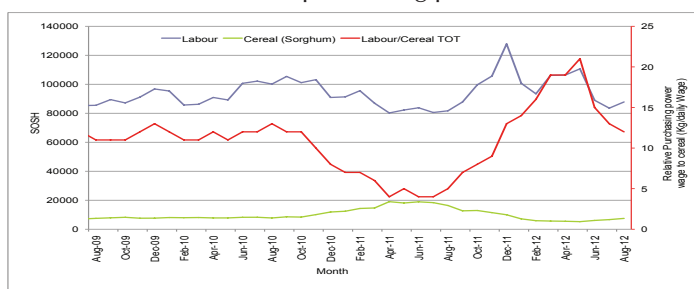


Figure 16: Goat Local Quality

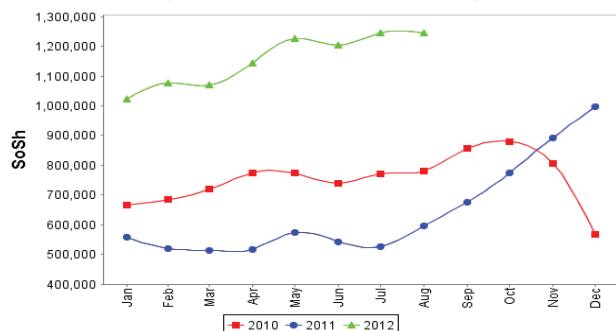


Figure 17: Exchange Rate

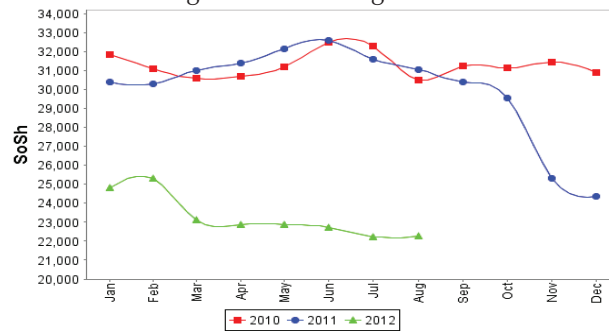


Figure 18: Water Drum

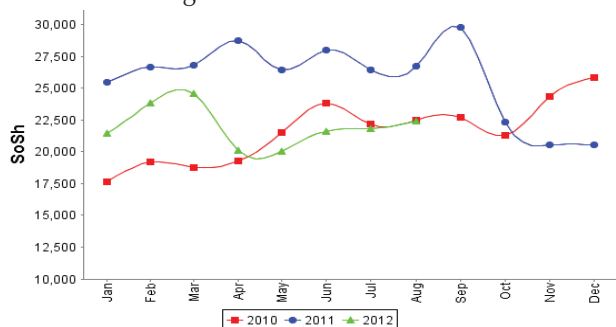
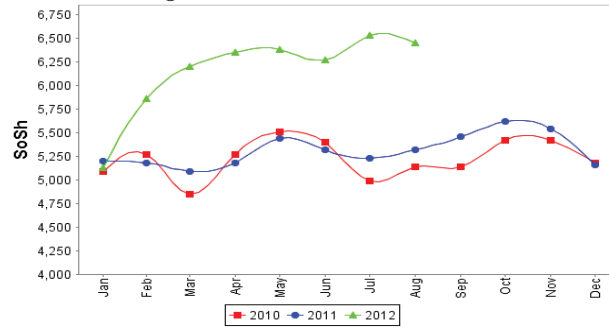


Figure 19: Firewood Bundle



# Regional analysis: Shabelle Regions

Indicator	Aug-11	Jul-12	Aug-12 Nominal Price	Aug-12 Real (Deflated) Price	% Change Same Month Previous Year	% Change Previous Month	% Change 5-year avrg (2003-07)
<b>Imported Commodities Prices</b>							
Diesel 1 litre	39,333	30,958	29,458	13,608	-25%	-5%	179%
Imported Red Rice 1kg	25,750	15,708	14,917	6,841	-42%	-5%	96%
Petrol 1 litre	38,667	31,667	29,583	13,666	-23%	-7%	133%
Sugar	34,125	21,875	22,583	10,408	-34%	3%	177%
Vegetable Oil 1 litre	54,792	35,250	36,333	16,807	-34%	3%	149%
Wheat Flour 1kg	25,375	15,417	15,500	7,113	-39%	1%	104%
Wheat Grain 1kg	-	13,000	7,334	3,313	-	-44%	110%
<b>Cereal Prices</b>							
Red Sorghum 1kg	20,605	9,167	9,530	4,335	-54%	4%	282%
White Maize 1kg	17,475	7,431	6,523	2,935	-63%	-12%	124%
<b>Livestock &amp; Livestock Product Prices</b>							
Camel Local Quality (Head)	11,595,000	15,435,000	16,930,000	7,877,846	46%	10%	303%
Cattle Local Quality (Head)	2,992,500	4,517,500	4,700,000	2,186,926	57%	4%	294%
Fresh Camel Milk 1 litre	19,417	18,333	22,688	10,457	17%	24%	363%
Goat Export Quality (Head)	1,374,375	1,801,458	1,966,250	914,845	43%	9%	293%
Goat Local Quality (Head)	998,333	1,216,250	1,326,667	617,231	33%	9%	284%
<b>Other Essential Items</b>							
Charcoal 50kg	113,625	110,583	116,361	54,046	2%	5%	210%
Cowpeas 1 kg	51,219	19,994	19,055	8,767	-63%	-5%	257%
Unskilled Labor Wage Rate	65,958	62,500	64,375	29,855	-2%	3%	217%
Firewood Bundle	4,500	5,875	6,042	2,711	34%	3%	189%
Local Sesame Oil 1 litre	68,875	47,000	53,625	24,853	-22%	14%	154%
Exchange Rate (Somali Shilling per USD)	30,983	22,638	22,592	10,413	-22%	0%	38%
<b>Construction Materials*</b>							
Cement 50kg	305,000	222,950	214,250	99,596	-30%	-4%	-
Cooking Pot Aluminium 7 Litre	750,000	676,667	700,000	325,627	-7%	3%	-
Galvanised Iron Sheet Ga 26	150,000	87,600	86,950	40,360	-42%	-1%	-
Hollow Concrete Block 10cm x 20cm x 40cm	12,000	12,750	12,750	5,833	6%	0%	-
Non Collapsible Jerrycan 10 Litre	47,125	47,500	51,563	23,894	9%	9%	-
Plastic Tarpaulin 14m x 5 m	321,667	252,083	235,833	109,639	-27%	-6%	-
Roofing Nails 15Kg	579,000	579,000	595,500	277,001	3%	3%	-
Timber 2in x 4in x 20ft	59,500	46,600	47,750	22,119	-20%	2%	-
Woven Dry Raised Blanket 150cm x 200cm	71,667	75,250	62,667	29,060	-13%	-17%	-
<b>Terms of Trade</b>							
Labour Wage (Daily)/ Cereal (Maize(Kg))	4	8	10	-	161%	17%	41%
Local Goat (Head)/ Cereal (Maize(Kg))	57	164	203	-	256%	24%	71%
<b>Price Indices</b>							
Consumer Price Index	334	210	215	-	-36%	2%	-
Purchasing Power Index	0.30	0.48	0.47	-	56%	-2%	-

\* Data has been collected since May 2010

Figure 20: Imported commodity prices compared to exchange rates

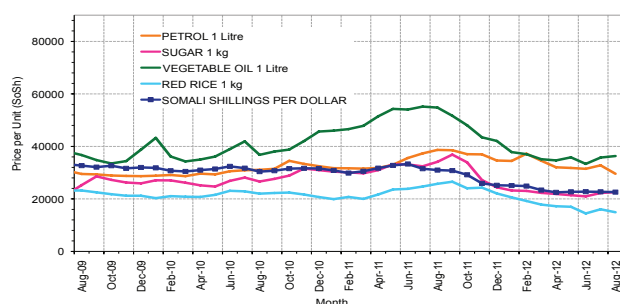


Figure 21: Trends in wage rates, staple cereal prices and relative purchasing power

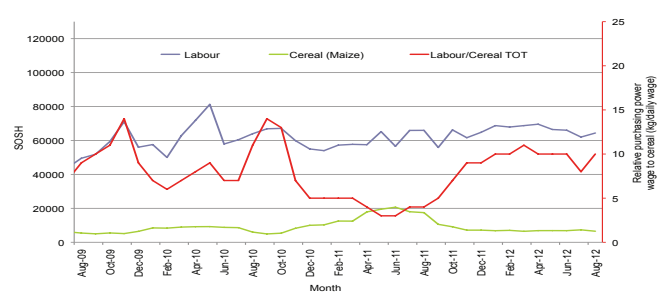


Figure 22: Goat Local Quality

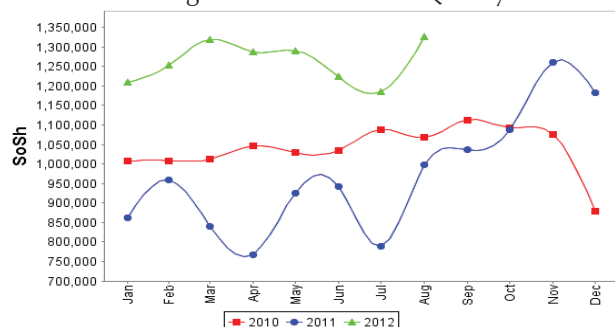


Figure 23: Exchange Rate

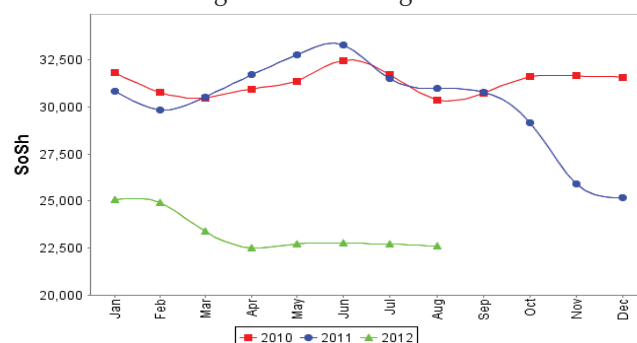


Figure 24: Water Drum

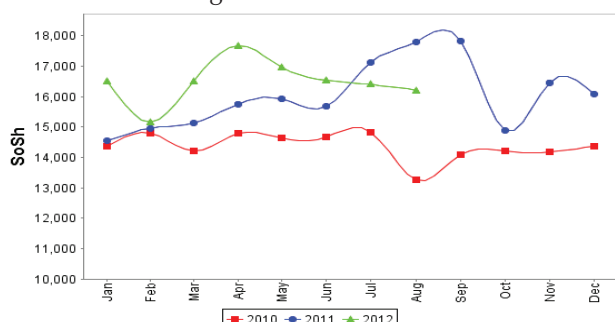
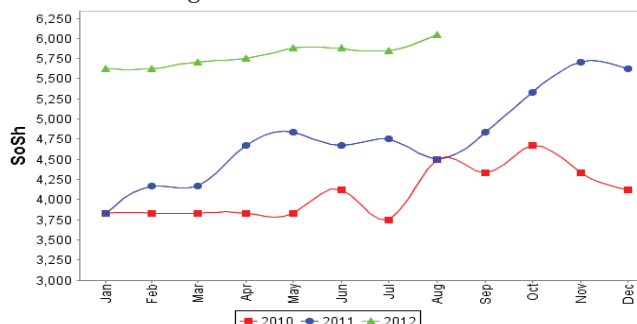


Figure 25: Firewood Bundle



# Regional analysis:Banadir Region

Indicator	Aug-11	Jul-12	Aug-12 Nominal Price	Aug-12 Real (Deflated) Price	% Change Same Month Previous Year	% Change Previous Month	% Change 5-year avrg (2003-07)
<b>Imported Commodities Prices</b>							
Diesel 1 litre	37,803	27,500	26,600	12,278	-30%	-3%	168%
Imported Red Rice 1kg	24,158	13,325	14,167	6,492	-41%	6%	98%
Petrol 1 litre	36,708	26,042	26,133	12,060	-29%	0%	115%
Sugar	32,917	20,167	19,767	9,098	-40%	-2%	165%
Vegetable Oil 1 litre	52,703	35,750	33,917	15,682	-36%	-5%	135%
Wheat Flour 1kg	23,813	12,771	13,100	5,996	-45%	3%	82%
Wheat Grain 1kg	18,000	11,683	11,673	5,332	-35%	0%	205%
<b>Cereal Prices</b>							
Red Sorghum 1kg	21,537	5,683	5,437	2,430	-75%	-4%	136%
White Maize 1kg	20,802	8,633	8,820	4,004	-58%	2%	188%
<b>Livestock &amp; Livestock Product Prices</b>							
Camel Local Quality (Head)	10,800,000	-	-	-	-	-	-
Cattle Local Quality (Head)	3,040,000	-	-	-	-	-	-
Fresh Camel Milk 1 litre	20,688	20,413	21,607	9,954	4%	6%	316%
Goat Export Quality (Head)	1,280,000	2,700,000	2,600,000	1,209,744	103%	-4%	-
Goat Local Quality (Head)	1,435,000	2,173,750	2,080,000	967,775	45%	-4%	239%
<b>Other Essential Items</b>							
Charcoal 50kg	149,139	170,292	183,533	85,302	23%	8%	84%
Cowpeas 1 kg	58,462	16,883	19,160	8,816	-67%	13%	312%
Unskilled Labor Wage Rate	83,861	111,667	104,667	48,604	25%	-6%	90%
Firewood Bundle	6,611	7,833	7,737	3,500	17%	-1%	-81%
Local Sesame Oil 1 litre	70,261	49,542	56,200	26,051	-20%	13%	173%
Exchange Rate (Somali Shilling per USD)	31,089	22,348	22,444	10,344	-28%	0%	35%
<b>Construction Materials*</b>							
Cement 50kg	264,308	187,292	182,197	84,681	-31%	-3%	-
Cooking Pot Aluminium 7 Litre	273,200	337,500	284,000	132,052	4%	-16%	-
Galvanised Iron Sheet Ga 26	155,825	87,313	88,380	41,025	-43%	1%	-
Hollow Concrete Block 10cm x 20cm x 40cm	10,188	10,333	10,767	4,910	6%	4%	-
Non Collapsible Jerrycan 10 Litre	45,750	40,000	35,333	16,341	-23%	-12%	-
Plastic Tarpaulin 14m x 5 m	262,500	207,500	187,500	87,148	-29%	-10%	-
Roofing Nails 15Kg	650,479	469,042	480,583	223,527	-26%	2%	-
Timber 2in x 4in x 20ft	161,288	114,479	123,513	57,374	-23%	8%	-
Woven Dry Raised Blanket 150cm x 200cm	81,167	117,000	95,000	44,106	17%	-19%	-
<b>Terms of Trade</b>							
Labour Wage (Daily)/ Cereal (Maize(Kg))	4	13	12	-	194%	-8%	-34%
Local Goat (Head)/ Cereal (Maize(Kg))	69	252	236	-	242%	-6%	18%
<b>Price Indices</b>							
Consumer Price Index	334	210	215	-	-36%	2%	-
Purchasing Power Index	0.30	0.48	0.47	-	56%	-2%	-

\* Data has been collected since May 2010

Figure 26: Bakara: Imported Commodity Prices compared to Exchange Rate

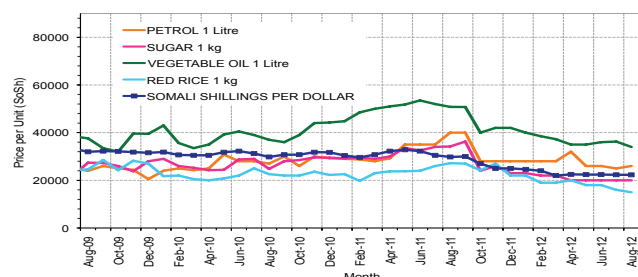


Figure 28: Goat Local Quality

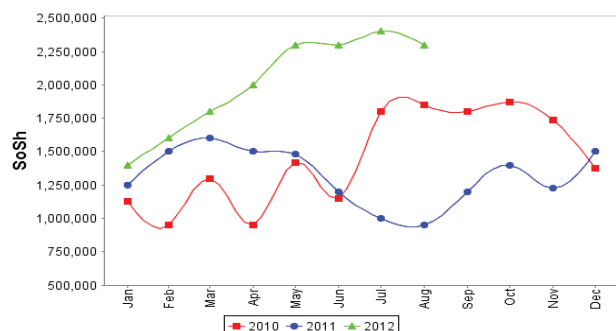


Figure 30: Wheat Flour

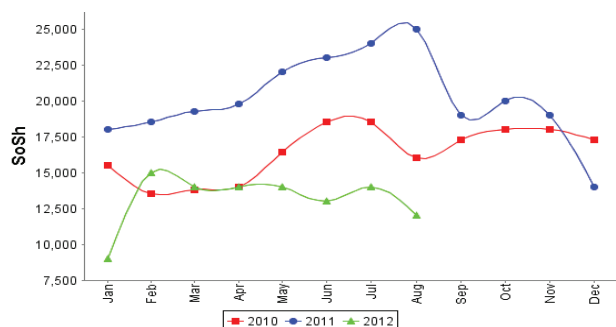


Figure 27: Bakara: Trends in Wage Rates, Staple Cereal Prices and Relative Purchasing Power

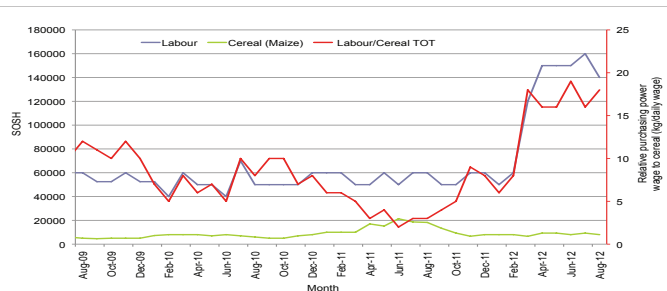


Figure 29: Exchange Rate

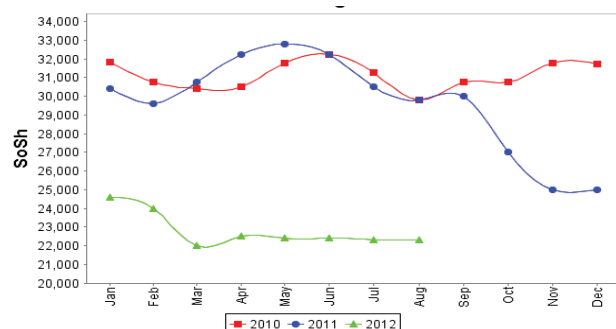
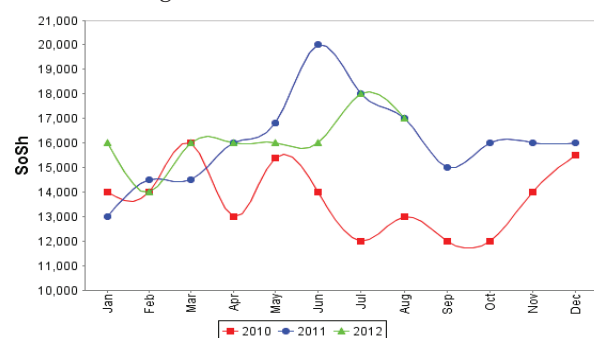


Figure 31: Fresh Camel Milk





# Regional analysis: Central Regions

Indicator	Aug-11	Jul-12	Aug-12 Nominal Price	Aug-12 Real (Deflated) Price	% Change Same Month Previous	% Change Previous Month	% Change 5-year avg (2003-07)
<b>Imported Commodities Prices</b>							
Diesel 1 litre	41,200	31,750	30,620	14,263	-26%	-4%	163%
Imported Red Rice 1kg	32,400	20,550	20,800	9,657	-36%	1%	145%
Petrol 1 litre	36,510	26,970	26,600	12,377	-27%	-1%	111%
Sugar	38,040	25,990	24,840	11,552	-35%	-4%	157%
Vegetable Oil 1 litre	63,800	49,200	46,200	21,571	-28%	-6%	149%
Wheat Flour 1kg	25,400	17,410	17,000	7,874	-33%	-2%	106%
Wheat Grain 1kg	24,125	15,600	15,667	7,249	-35%	0%	203%
<b>Cereal Prices</b>							
Red Sorghum 1kg	22,417	12,910	11,820	5,444	-47%	-8%	156%
White Maize 1kg	21,720	13,750	13,920	6,429	-36%	1%	189%
<b>Livestock &amp; Livestock Product Prices</b>							
Camel Local Quality (Head)	8,000,000	9,950,000	9,875,000	4,631,897	23%	-1%	344%
Cattle Local Quality (Head)	-	-	-	-	-	-	-
Fresh Camel Milk 1 litre	43,250	35,320	34,320	15,998	-21%	-3%	209%
Goat Export Quality (Head)	1,412,500	1,506,667	1,516,667	711,312	7%	1%	325%
Goat Local Quality (Head)	867,200	1,295,000	1,280,000	600,301	48%	-1%	391%
<b>Other Essential Items</b>							
Charcoal 50kg	178,500	175,500	173,000	81,048	-3%	-1%	217%
Cowpeas 1 kg	59,840	25,700	24,560	11,420	-59%	-4%	237%
Unskilled Labor Wage Rate	85,100	85,500	86,000	40,239	1%	1%	186%
Firewood Bundle	34,000	35,250	34,000	15,848	0%	-4%	768%
Local Sesame Oil 1 litre	100,000	89,150	89,500	41,881	-11%	0%	210%
Exchange Rate (Somali Shilling per USD)	31,616	22,310	22,018	10,228	-30%	-1%	37%
<b>Construction Materials*</b>							
Cement 50kg	348,800	289,250	284,250	133,231	-19%	-2%	-
Cooking Pot Aluminium 7 Litre	418,000	392,000	384,800	180,395	-8%	-2%	-
Galvanised Iron Sheet Ga 26	162,500	119,750	125,200	58,627	-23%	5%	-
Hollow Concrete Block 10cm x 20cm x 40cm	16,500	15,438	15,250	7,053	-8%	-1%	-
Non Collapsible Jerrycan 10 Litre	51,000	46,600	45,200	21,102	-11%	-3%	-
Plastic Tarpaulin 14m x 5 m	322,000	280,000	273,200	128,048	-15%	-2%	-
Roofing Nails 15Kg	818,200	672,600	653,250	306,315	-20%	-3%	-
Timber 2in x 4in x 20ft	152,600	111,250	107,750	50,442	-29%	-3%	-
Woven Dry Raised Blanket 150cm x 200cm	134,000	136,000	134,000	62,754	0%	-1%	-
<b>Terms of Trade</b>							
Labour Wage (Daily)/ Cereal (Rice(Kg))	3	4	4	-	57%	-1%	16%
Local Goat (Head)/ Cereal (Rice(Kg))	27	63	62	-	130%	-2%	100%
Camel (Head)/Cereal (Kg)	247	484	475	-	92%	-2%	81%
<b>Price Indices</b>							
Consumer Price Index	318	221	213	-	-33%	-4%	-
Purchasing Power Index	0.31	0.45	0.47	-	49%	4%	-

\* Data has been collected since May 2010

Figure 32: Imported commodity prices compared to exchange rates

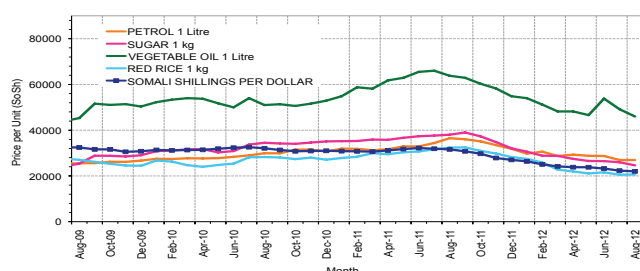


Figure 34: Goat Local Quality

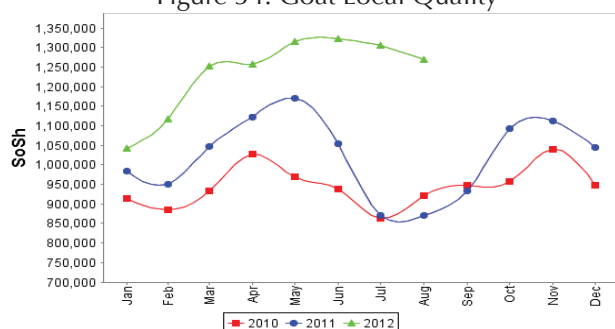


Figure 36: Water Drum

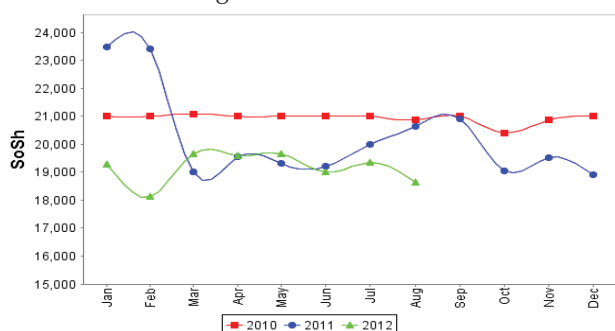


Figure 33: Trends in wage rates, staple cereal prices and relative purchasing power

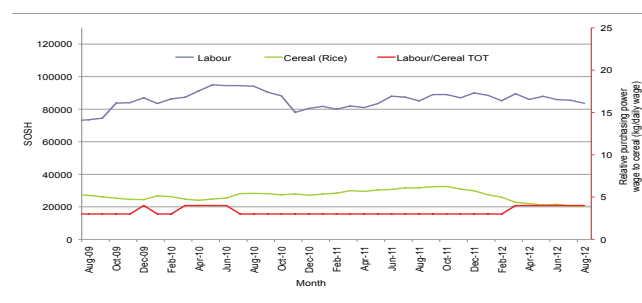


Figure 35: Exchange Rate

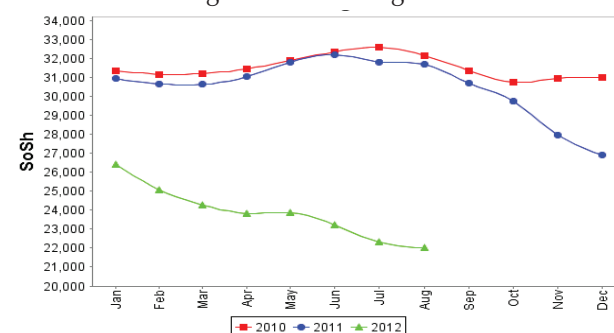
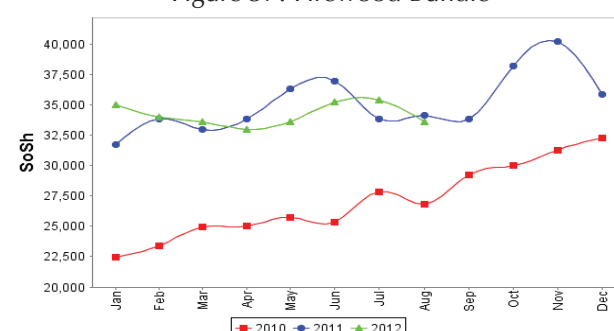


Figure 37: Firewood Bundle



# Regional analysis: Northeast Regions

Indicator	5-Year Average (2003-07)	Aug-11	Jul-12	Aug-12 Nominal Price	Aug-12 Real (Deflated) Price	% Change Same Month Previous Year	% Change Previous Month	% Change 5-year avrg (2003-07)
<b>Imported Commodities Prices</b>								
Diesel 1 litre	10,156	37,500	25,500	25,500	10,678	-32%	0%	151%
Imported Red Rice 1kg	7,247	26,200	20,125	18,875	7,878	-28%	-6%	160%
Petrol 1 litre	11,076	33,500	24,000	23,250	9,727	-31%	-3%	110%
Sugar	8,987	35,050	23,125	22,750	9,515	-35%	-2%	153%
Vegetable Oil 1 litre	16,914	64,450	43,063	43,313	18,207	-33%	1%	156%
Wheat Flour 1kg	7,319	24,625	19,188	17,438	7,270	-29%	-9%	138%
Wheat Grain 1kg	7,830	37,100	24,750	23,875	9,991	-36%	-4%	205%
<b>Cereal Prices</b>								
Red Sorghum 1kg	7,190	30,000	24,250	23,250	9,727	-23%	-4%	223%
White Maize 1kg	6,485	23,400	22,250	21,500	8,987	-8%	-3%	232%
<b>Livestock &amp; Livestock Product Prices</b>								
Camel Local Quality (Head)	3,454,333	13,120,000	15,962,500	#####	6,759,774	22%	0%	363%
Cattle Local Quality (Head)	1,875,000	7,500,000	7,000,000	7,875,000	3,328,326	5%	13%	320%
Fresh Camel Milk 1 litre	14,863	40,050	38,833	41,625	17,493	4%	7%	180%
Goat Export Quality (Head)	420,783	1,387,500	1,368,750	1,425,000	602,187	3%	4%	239%
Goat Local Quality (Head)	362,216	1,207,125	1,348,125	1,393,750	588,979	15%	3%	285%
<b>Other Essential Items</b>								
Charcoal 50kg	78,908	339,000	372,500	367,500	155,227	8%	-1%	366%
Cowpeas 1 kg	10,100	62,500	38,083	39,167	16,454	-37%	3%	288%
Unskilled Labor Wage Rate	44,899	115,500	119,625	122,500	51,676	6%	2%	173%
Firewood Bundle	5,880	32,250	43,750	46,250	19,448	43%	6%	687%
Local Sesame Oil 1 litre	31,513	93,000	87,188	86,875	36,618	-7%	0%	176%
Exchange Rate (Somali Shilling per USD)	16,408	30,725	21,094	20,969	8,763	-32%	-1%	28%
<b>Construction Materials*</b>								
Cement 50kg	-	242,650	185,813	194,813	82,239	-20%	5%	-
Cooking Pot Aluminium 7 Litre	-	501,750	383,125	410,188	173,269	-18%	7%	-
Galvanised Iron Sheet Ga 26	-	254,250	180,750	175,875	74,235	-31%	-3%	-
Hollow Concrete Block 10cm x 20cm x 40cm	-	12,500	12,750	12,500	5,183	0%	-2%	-
Non Collapsible Jerrycan 10 Litre	-	41,950	37,000	39,500	16,595	-6%	7%	-
Plastic Tarpaulin 14m x 5 m	-	191,325	162,688	157,500	66,469	-18%	-3%	-
Roofing Nails 15Kg	-	480,850	598,125	586,875	247,947	22%	-2%	-
Timber 2in x 4in x 20ft	-	241,875	175,438	168,750	71,223	-30%	-4%	-
Woven Dry Raised Blanket 150cm x 200cm	-	264,188	226,875	247,438	104,481	-6%	9%	-
<b>Terms of Trade</b>								
Labour Wage (Daily)/ Cereal (Rice(Kg))	6	4	6	6	-	47%	9%	5%
Local Goat (Head)/ Cereal (Rice(Kg))	50	46	67	74	-	60%	10%	48%
<b>Price Indices</b>								
Consumer Price Index	-	272	236	237	-	-13%	0%	-
Purchasing Power Index	-	0.37	0.42	0.42	-	15%	0%	-

\* Data has been collected since May 2010

Figure 38: Imported commodity prices compared to exchange rates

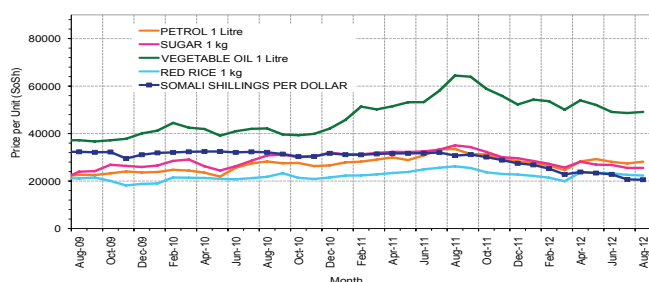


Figure 39: Trends in wage rates, staple cereal prices and relative purchasing power

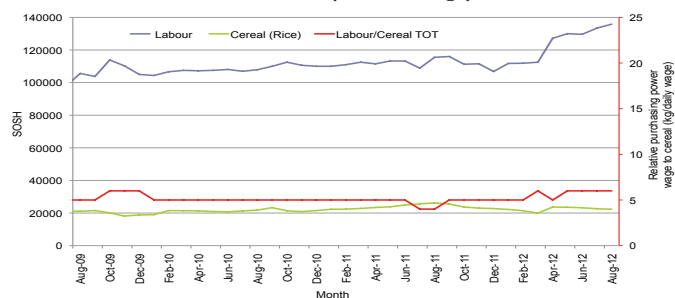


Figure 40: Goat Local Quality

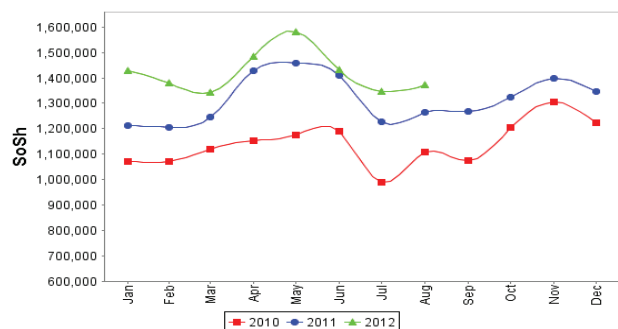


Figure 41: Exchange Rate

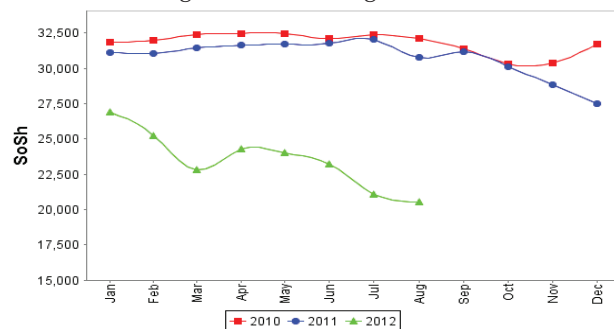


Figure 42: Water Drum

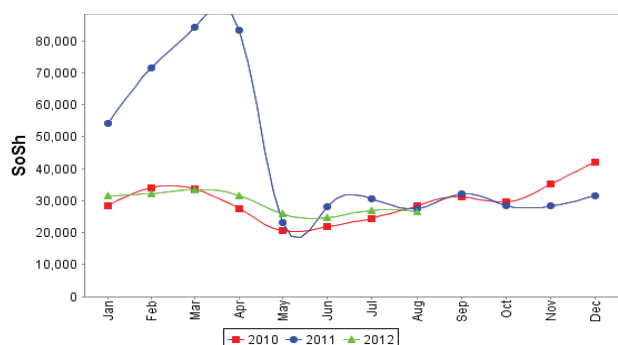
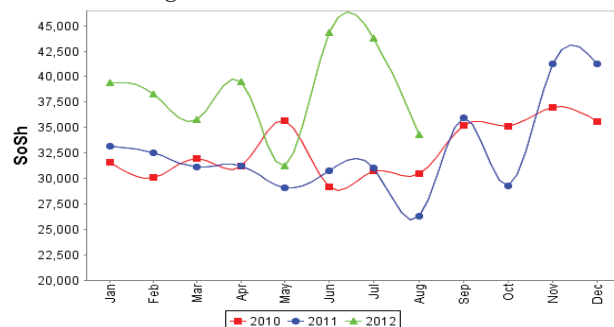


Figure 43: Firewood Bundle



# Regional analysis: Northwest Regions

Indicator	Aug-11	Jul-12	Aug-12 Nominal Price	Aug-12 Real (Deflated) Price	% Change Same Month Previous Year	% Change Previous Month	% Change 5-year avrg (2003-07)
<b>Imported Commodities Prices</b>							
Diesel 1 litre	6,880	6,923	6,880	5,383	0%	-1%	87%
Imported Red Rice 1kg	5,103	4,665	4,585	3,554	-10%	-2%	52%
Petrol 1 litre	7,255	7,190	7,090	5,551	-2%	-1%	64%
Sugar	6,815	6,073	6,040	4,714	-11%	-1%	84%
Vegetable Oil 1 litre	11,585	12,115	12,555	9,906	8%	4%	70%
Wheat Flour 1kg	4,768	4,170	4,420	3,423	-7%	6%	50%
Wheat Grain 1kg	3,738	3,019	3,488	2,680	-7%	16%	77%
<b>Cereal Prices</b>							
White Sorghum 1kg	3,715	3,450	3,440	2,642	-7%	0%	91%
Yellow Maize 1kg	3,758	3,418	3,745	2,885	0%	10%	84%
<b>Livestock &amp; Livestock Product Prices</b>							
Camel Local Quality (Head)	1,970,000	2,601,167	2,666,333	2,124,972	35%	3%	52%
Cattle Local Quality (Head)	1,347,917	1,833,250	1,853,500	1,477,143	38%	1%	121%
Fresh Camel Milk 1 litre	5,290	5,675	5,525	4,303	4%	-3%	30%
Goat Export Quality (Head)	313,675	434,400	409,300	326,113	30%	-6%	141%
Goat Local Quality (Head)	222,325	300,050	273,100	217,561	23%	-9%	90%
<b>Other Essential Items</b>							
Charcoal 50kg	34,550	40,870	40,300	32,019	17%	-1%	115%
Cowpeas 1 kg	9,350	9,333	9,563	7,522	2%	2%	98%
Unskilled Labor Wage Rate	31,700	40,200	39,200	31,142	24%	-2%	56%
Firewood Bundle	2,500	3,333	3,333	2,556	33%	0%	31%
Local Sesame Oil 1 litre	22,563	25,438	25,000	19,825	11%	-2%	48%
Exchange Rate (Somaliland Shilling per USD)	5,775	6,550	6,550	5,120	13%	0%	-1%
<b>Construction Materials*</b>							
Cement 50kg	49,030	53,720	54,575	43,396	11%	2%	-
Cooking Pot Aluminium 7 Litre	90,500	88,400	83,800	66,689	-7%	-5%	-
Galvanised Iron Sheet Ga 26	40,750	48,750	48,625	38,654	19%	0%	-
Hollow Concrete Block 10cm x 20cm x 40cm	3,075	2,975	3,025	2,311	-2%	2%	-
Non Collapsible Jerrycan 10 Litre	6,725	6,915	7,000	5,479	4%	1%	-
Plastic Tarpaulin 14m x 5 m	74,075	88,250	88,200	70,196	19%	0%	-
Roofing Nails 15Kg	161,300	185,150	194,100	154,598	20%	5%	-
Timber 2in x 4in x 20ft	100,717	127,283	128,083	101,982	27%	1%	-
Woven Dry Raised Blanket 150cm x 200cm	88,675	72,375	75,063	59,725	-15%	4%	-
<b>Terms of Trade</b>							
Labour Wage (Daily)/ Cereal (Rice(Kg))	6	9	9	-	38%	-1%	2%
Local Goat (Head)/ Cereal (Rice(Kg))	44	64	60	-	37%	-7%	25%
<b>Price Indices</b>							
Consumer Price Index	121	128	125	-	3%	-2%	-
Purchasing Power Index	0.82	0.78	0.80	-	-3%	2%	-

Figure 44: Imported commodity prices compared to exchange rates

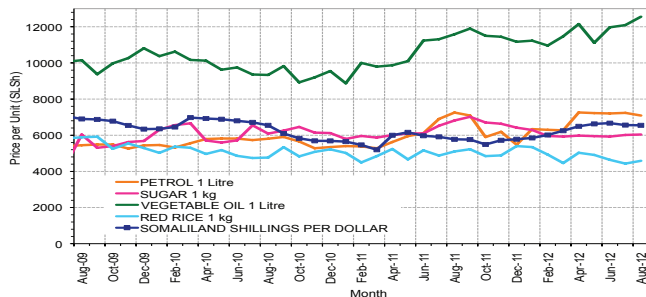


Figure 46: Goat Local Quality

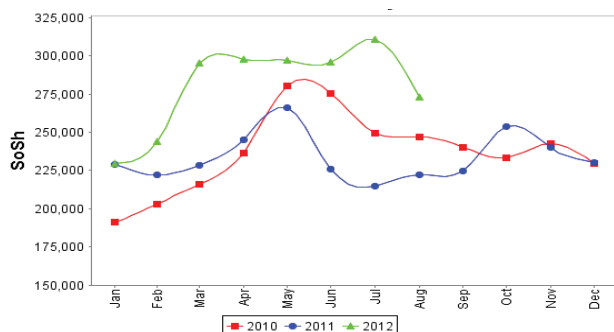


Figure 48: Water Drum

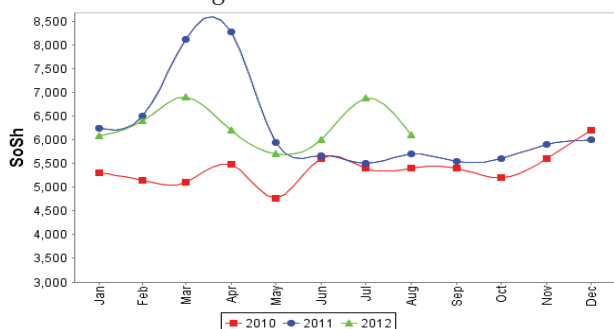


Figure 45: Trends in wage rates, staple cereal prices and relative purchasing power

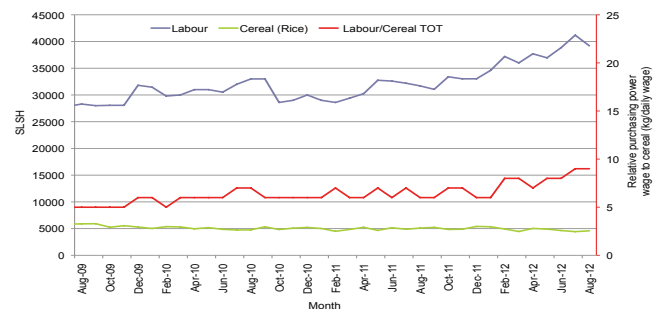


Figure 47: Exchange Rate

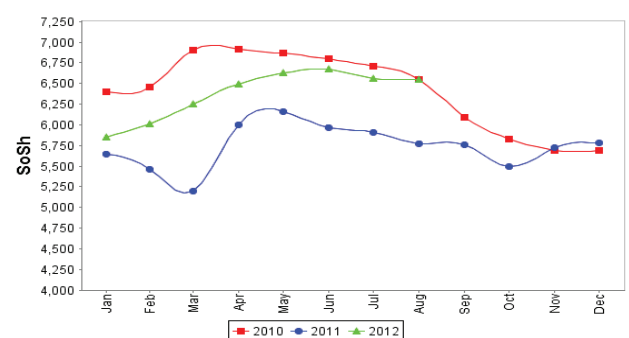
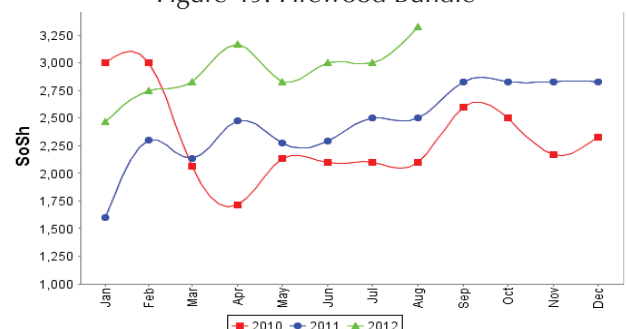


Figure 49: Firewood Bundle



# Trends in Livestock Exports

Table 2: Berbera Livestock Exports (Number of Heads)

	1994	1995	1996	1997	1998	1999	2000	2001	2002	2003	2004	2005	2006	2007	2008	2009	2010	2011	2012 (Jan-Jul)*
Shoats	1,572,656	2,683,597	2,376,646	2,814,495	957,224	2,048,136	1,601,083	51,546	341,711	563,107	859,404	1,023,795	1,017,242	1,350,054	1,219,519	1,556,003	2,584,810	3,104,684	1,014,129
Cattle	173,400	167,128	65,127	66,939	92,213	89,967	63,263	20,973	37,547	84,312	131,852	148,151	85,631	88,143	80,051	88,005	133,021	150,934	98,893
Camel	38,553	21,993	42,801	50,587	11,663	37,430	16,984	3,473	18,864	21,874	5,147	5,069	22,810	14,245	26,515	20,206	92,651	107,281	77,586

\* Jan-May 2012 cumulative livestock exports

Figure 50: Berbera Livestock Exports (Number of Heads)

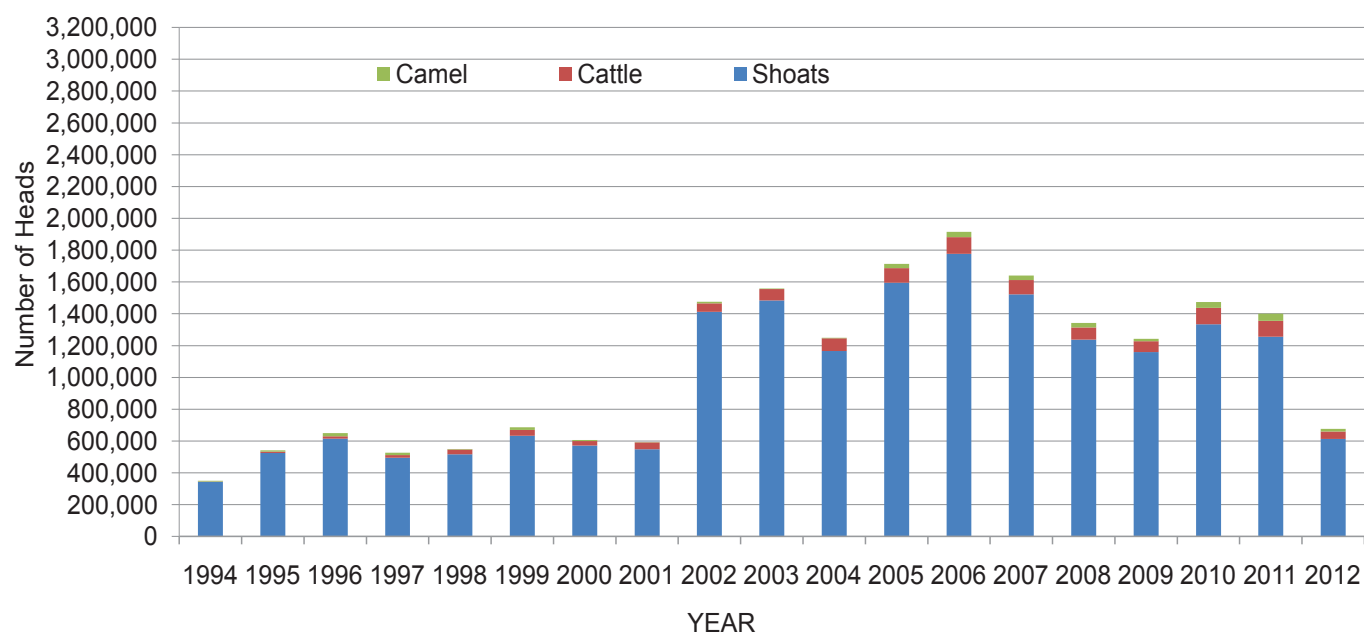
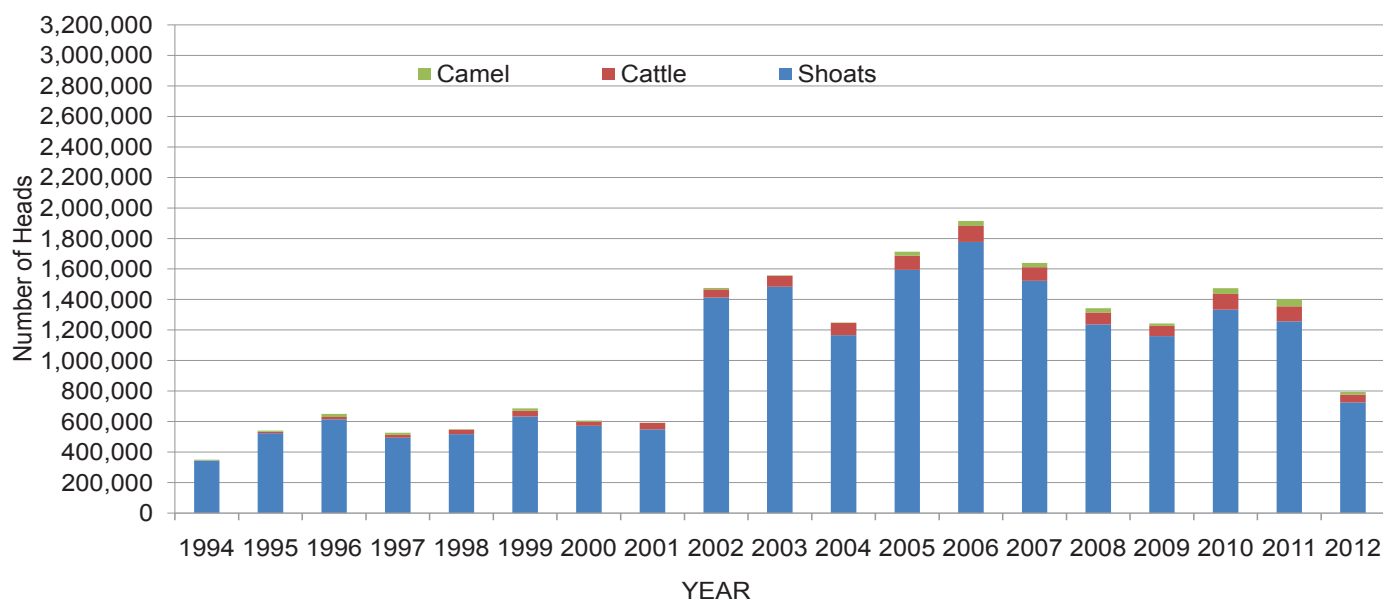


Table 3: Bossaso Livestock Exports (Number of Heads)

	1994	1995	1996	1997	1998	1999	2000	2001	2002	2003	2004	2005	2006	2007	2008	2009	2010	2011	2012 (Jan-Aug)
Shoats	344,000	524,346	614,407	494,320	517,020	633,669	571,455	548,853	1,412,450	1,483,409	1,166,480	1,594,859	1,777,283	1,522,855	1,236,775	1,159,454	1,333,478	1,256,535	724,694
Cattle	1,450	8,795	15,335	17,831	29,492	36,586	27,604	42,248	53,313	71,328	79,994	91,910	104,595	89,190	78,046	67,385	103,808	99,058	52,180
Camel	5,397	8,392	20,462	14,599	3,938	15,544	8,177	1,950	9,720	4,259	2,488	26,109	33,724	27,580	27,639	15,331	36,865	45,878	16,985

Figure 51: Bossaso Livestock Exports (Number of Heads)

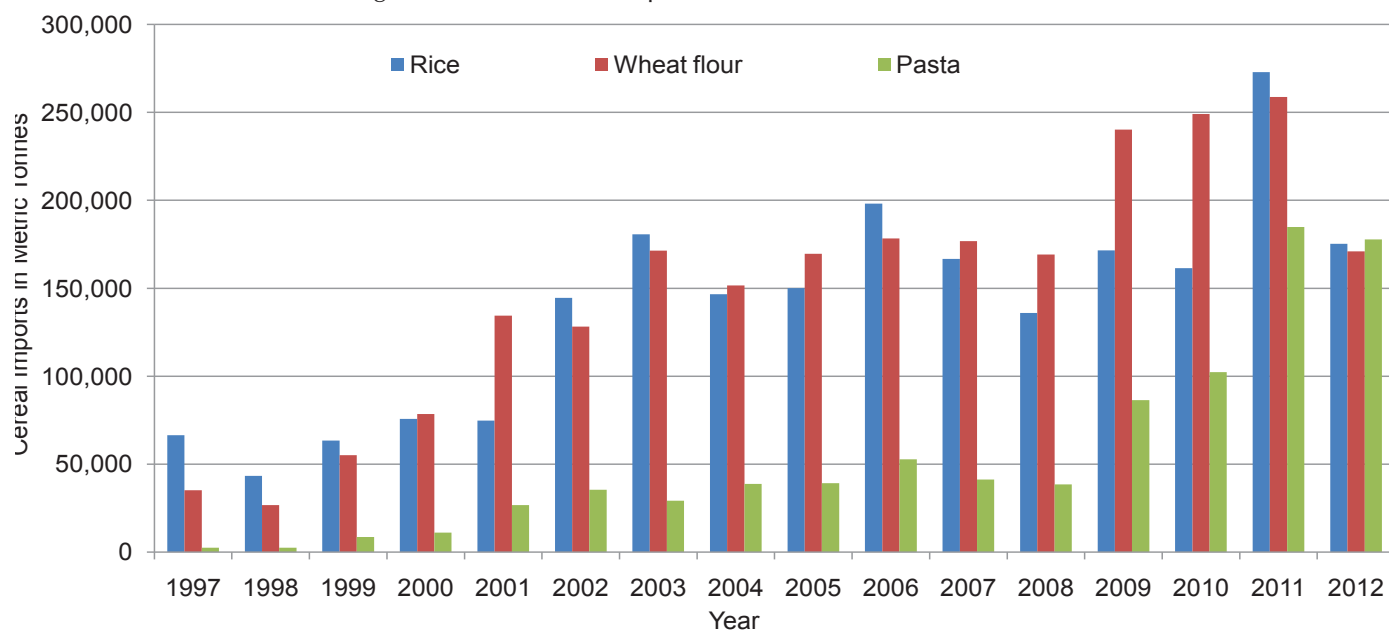


# Trends in Cereal Imports

Table 4: Total Cereal Imports (Berbera,Bossaso,Elmaan)

	1997	1998	1999	2000	2001	2002	2003	2004	2005	2006	2007	2008	2009	2010	2011	2012*
<b>Rice</b>	66,419	43,410	63,464	75,687	74,729	144,600	180,614	146,567	150,017	198,101	166,626	136,007	171,472	161,415	272,877	175,228
<b>Wheat flour</b>	35,143	26,774	55,176	78,555	134,425	128,263	171,442	151,555	169,583	178,345	176,821	169,208	240,247	249,080	258,679	171,038
<b>Pasta</b>	2,510	2,455	8,544	11,071	26,702	35,425	29,273	38,749	39,153	52,815	41,331	38,441	86,372	102,373	184,849	177,713

Figure 52: Total Cereal Imports (Berbera,Bossaso and Elmaan)



\* January-July 2012 Cumulative Cereal Imports

\* Berbera data up to July 2012

\* Bossaso data up to August 2012

\* Elmaan data is up to July 2012