

## Highlights

**Inflation:**

*SoSh (Somali shilling)-using areas:* Consumer Price Index (CPI) generally exhibits relative stability in SoSh using areas in April 2017 month-on-month. The CPI rose (19-31%) annually due to increases in red sorghum prices.

*SISh (Somaliland shilling)-using areas:* The CPI increased (12-17%) both month-on-month and year-on-year due to increases in the price of red sorghum.

**Exchange rate:**

**SoSh-using areas:** The exchange rates between SoSh and the United States Dollar (USD) remained relatively stable or changed at mild rates (less than +/- 6%) against USD in most regions of the country. Annual comparison mostly exhibited mixed patterns; specifically, mild (less than 10%) changes were recorded in most of the southern regions; moderate to high (10-40%) depreciations were recorded in central and northeast regions due to printing of local notes in these regions.

*SISH-using areas:* The SISH depreciated (6-17%) against the USD in April 2017 both month-on-month and year-on-year due to increased supply as a result of printing of local currency notes.

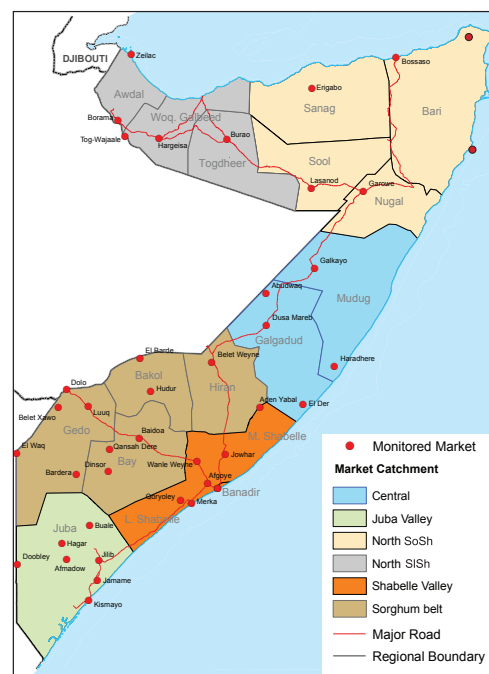
**Local cereal** prices increased at mild to high rates in most regions of the country in April 2017 with the highest increase (57%) being recorded in Awdal region. The price increases is attributable to reduced supply as a result of two consecutive poor production seasons (Gu 2016 and Deyr 2016). Annual comparison also indicates higher prices for local grains in all regions of the country with the highest increase being recorded in Bay (137%) due to poor production in 2016.

**Prices of imported food** (rice, sugar, vegetable oil, wheat flour) mostly exhibited relative stability or mild monthly changes (+/-10%) in local currency terms in April 2017 in most regions of the country. Year-on-year comparison indicates mild to moderate price increases in most regions of the country for most of the food imports in April 2017 due to depreciation of local currency against USD and increased global sugar prices.

**Livestock prices** exhibited mixed patterns; with mild to moderate increases in goat and camel prices recorded in most parts of the country due to reduced supply of saleable livestock. Exceptions are Hiran, Juba, Northwest (Awdal & Woqooyi Galbeed) and Lower Shabelle regions where cattle prices declined month-on-month in April 2017 due to further deterioration of livestock body conditions. Compared to a year ago, livestock prices for all species were significantly lower across the regions of the country due to deteriorated livestock body conditions. Milk prices (camel and cattle) generally exhibited monthly increases in most regions of the country due to low supply. Milk prices also increased at moderate to high rates compared to a year ago in most regions of the country.

**Labor (unskilled) wages** changed mildly (by less than 10%) month-on-month in most regions of the country in April 2017. Annual comparison indicates declines of labour wages in most regions +/- with the highest decline (55%) being noted in Banadir (Bakara market). The decline is attributed to increased competition for available labour in urban areas as a result of increased in-migration from drought affected rural areas.

**Terms of Trade (ToT)** between daily labor wage and local cereals either remained stable or declined (by 1-2kg of cereals/daily labor wage) in most parts of the country in April 2017 due to increase in cereal prices and/or decrease in labor wages. ToT between local quality goat and cereals exhibited mixed monthly patterns. ToT increased substantially (52Kgs/goat) in Banadir due to increase in goat prices (61%), the ToT declined moderately (27-39Kgs/goat) in Shabelle and Awdal regions due to increase in cereal prices and/or decrease in goat prices; while in other regions the ToT between goat and cereals changed at mild rates. Annual comparison indicates the ToTs are lower across most regions of the country due to declines in labor wage rates and goat prices and/or increase in local grain prices compared to a year ago (April 2016).



This Market Update is a monthly report that presents analysis of market information and is produced regularly as part of the monthly monitoring process.

The weekly price data is collected from 48 main markets and 51 rural markets throughout Somalia since 1995.

Market analysis is an integral part of all of FSNAU's annual food security projections and seasonal technical reports (Technical Reports on FSNAU Post *Gu* and Post *Deyr* Analysis).

Detailed market data are available online on [www.fsnau.org/ids](http://www.fsnau.org/ids).

### Towns Affected by Trade Disruption (Bulo Burto, Wajid, Hudur and Diinsor)

**Labor (unskilled) wages** increased in April 2017 in markets affected by trade disruptions as a result of insurgent activities. Annual comparison indicates declines in all the markets.

**Terms of Trade (ToTs)** between daily labor wage and local cereals and between local quality goat and cereals either remained relatively stable or changed at mild rates in all the markets in April 2017. Annual comparison indicates lower ToTs in all markets due to increase in cereal prices and decrease in labor wage rates and goat prices.

**Local grain (red and white sorghum)** prices increased (14-25%) in Bulo-Burto and Hudur but declined (8-13%) in Wajid and Dinsor in April 2017 due to increased humanitarian intervention (in-kind distribution). On the other hand, compared to a year ago, local grain prices increased substantially in all markets.

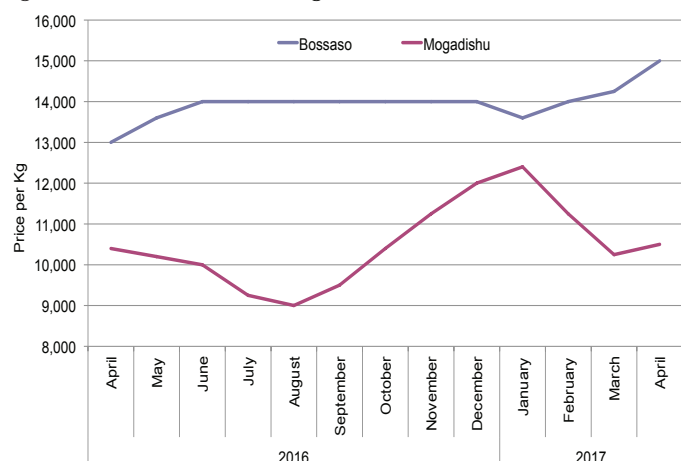
**Prices of imported food items** (rice, sugar, vegetable oil, wheat flour) either remained relatively stable or changed at mild rates for most of the food imports in all the siege affected markets in April 2017. Annual comparison indicates higher prices for most of the food imports in the markets except in Dinsor where prices of most of the food imports recorded declines (10-28%) due to increased supply as a result of relative improvement in security condition.

# National Trends: CPI, Exchange Rates, Cereal Prices and Relative Purchasing Power

Table 1: ToT between Daily Labour Wage Rate and Cereals by Region April 2017

Regions	April 2017 (kg)	kg change from		
		March - 2017	April - 2016	April 5 yr Average (2012 - 2016)
Banadir/Mogadishu	7	-1	-19	-12
Bay	8	-1	-16	-13
Bakool	3	0	-4	-3
Gedo	10	1	-7	-7
Juba	7	-1	-6	-3
Shabelle	6	-2	-3	-3
Northwest	10	-2	1	-1
Northeast	8	0	-1	1
Central	5	0	0	1

Figure 1: Wheat Prices: Mogadishu and Bossaso Markets



Source: FSNAU Manifest Price Monitoring System

Figure 2: Terms of Trade Between Wage Rates and Selected Cereals

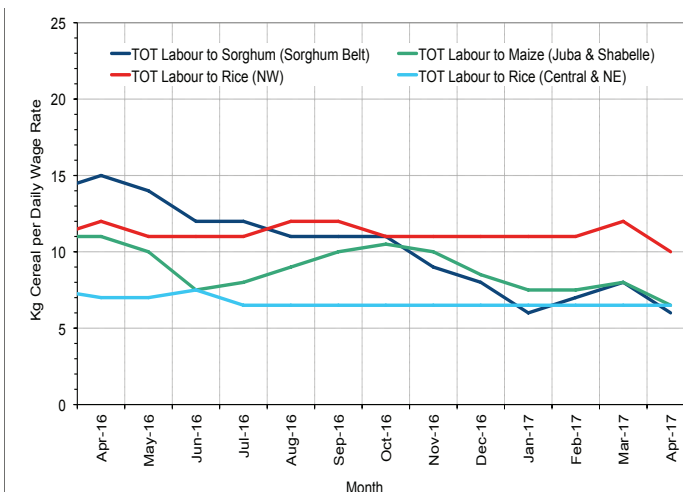


Figure 3: Monthly Exchange Rate for Selected Regions (SoSh and SiSh to USD)

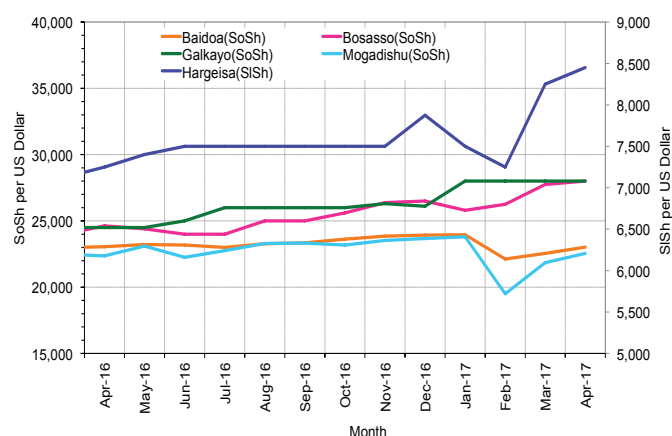


Figure 4: Monthly Trends in Consumer Price Index (CPI, March 2007=100)

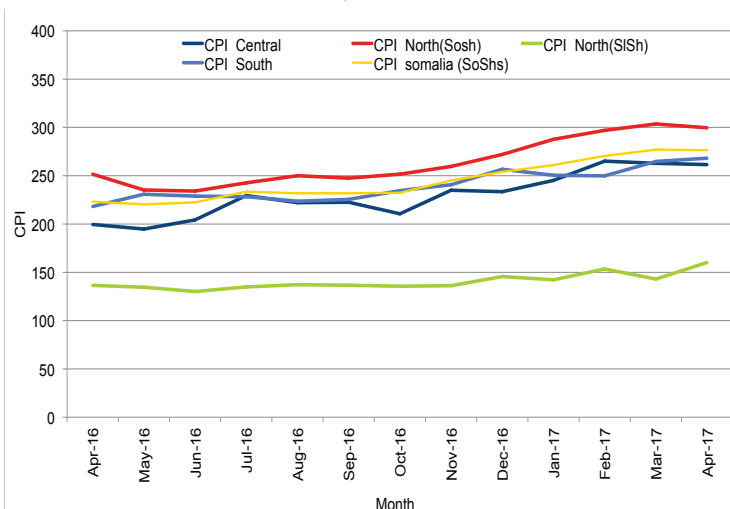
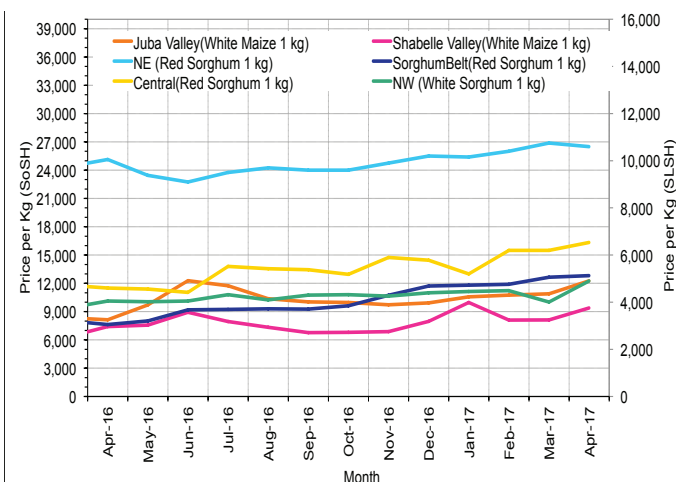


Figure 5: Monthly Trends in Local Cereal Prices



# Regional analysis: Juba Regions

Indicator	5-Year Average (2012-2016)	Apr-16	Mar-17	Apr-17 Nominal Price	Apr-17 Real (Deflated) Price	% Change Previous Month	% Change Same Month Previous Year	% Change 5-year avrg (2012-2016)
<b>Imported Commodities Prices</b>								
Diesel 1 litre	25,780	20,219	22,266	20,750	7,637	-7%	3%	-20%
Imported Red Rice 1kg	16,131	14,925	16,375	15,750	5,772	-4%	6%	-2%
Petrol 1 litre	28,430	24,781	24,250	23,563	8,685	-3%	-5%	-17%
Sugar	18,005	15,975	18,250	17,375	6,378	-5%	9%	-3%
Vegetable Oil 1 litre	33,110	28,275	29,500	29,281	10,817	-1%	4%	-12%
Wheat Flour 1kg	15,994	15,313	15,906	15,813	5,796	-1%	3%	-1%
Wheat Grain 1kg	-	-	-	-	-	-	-	-
<b>Cereal Prices</b>								
Red Sorghum 1kg	8,500	8,000	9,808	11,083	4,032	13%	39%	30%
White Maize 1kg	8,958	8,136	10,881	12,272	4,476	13%	51%	37%
<b>Livestock &amp; Livestock Product Prices</b>								
Camel Local Quality (Head)	9,829,558	10,518,750	8,718,750	10,410,938	3,881,607	19%	-1%	6%
Cattle Local Quality (Head)	3,842,466	3,571,429	2,503,929	2,253,571	840,141	-10%	-37%	-41%
Fresh Camel Milk 1 litre	20,467	19,906	18,406	18,750	6,891	2%	-6%	-8%
Goat Export Quality (Head)	1,436,298	1,231,250	917,500	1,097,500	409,102	20%	-11%	-24%
Goat Local Quality (Head)	901,695	813,063	576,875	749,438	279,327	30%	-8%	-17%
<b>Other Essential Items</b>								
Charcoal 50kg	89,617	100,625	81,094	82,656	30,718	2%	-18%	-8%
Cowpeas 1 kg	23,707	22,625	24,406	25,875	9,547	6%	14%	9%
Unskilled Labor Wage Rate	92,208	104,719	82,500	84,219	31,301	2%	-20%	-9%
Firewood Bundle	7,895	7,484	6,281	5,656	2,009	-10%	-24%	-28%
Local Sesame Oil 1 litre	69,794	53,675	58,719	57,406	21,304	-2%	7%	-18%
Exchange Rate (Somali Shilling per USD)	21,253	23,150	21,813	22,050	8,121	1%	-5%	4%
<b>Terms of Trade</b>								
Labour Wage (Daily)/ Cereal (Maize(Kg)	10	13	8	7	-	-13%	-46%	-30%
Local Goat (Head)/ Cereal (Maize(Kg)	101	100	53	61	-	15%	-39%	-40%
<b>Price Indices</b>								
Consumer Price Index	-	218	265	268	-	1%	23%	-

Figure 6: Trends in Cereal Prices

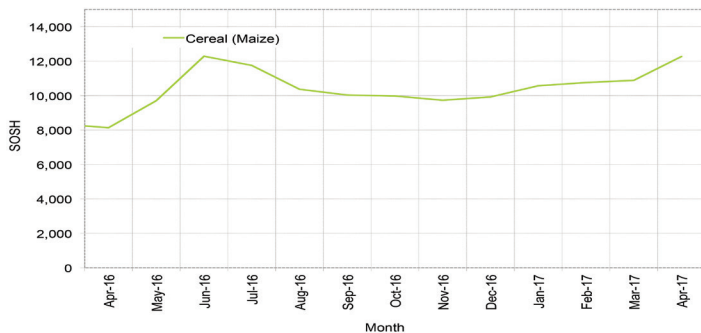


Figure 7: Trends in Wage Rates and Relative Purchasing Power

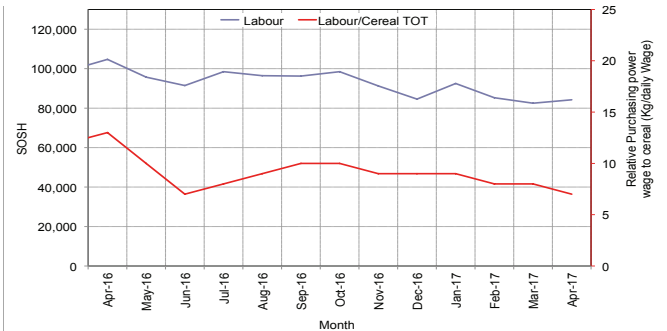


Figure 8: Imported Commodity Prices Compared to Exchange Rate

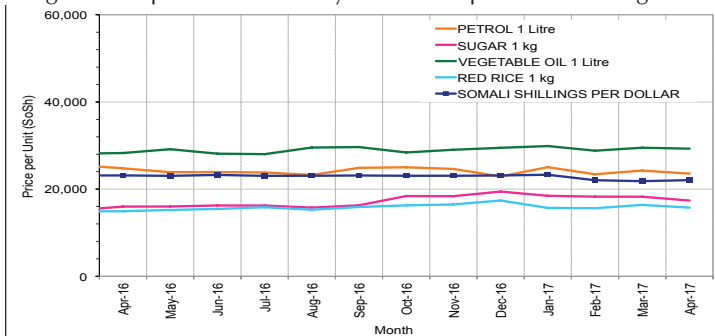


Figure 9: Goat Local Quality

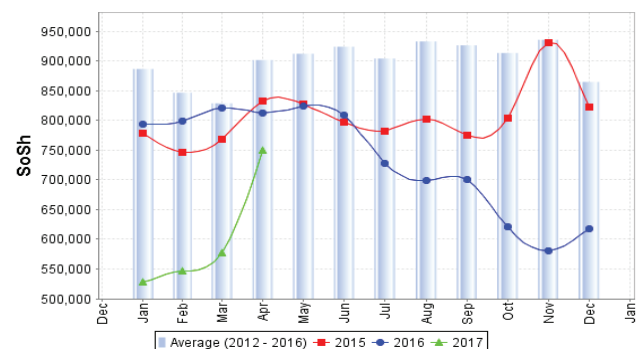


Figure 10: Exchange Rate

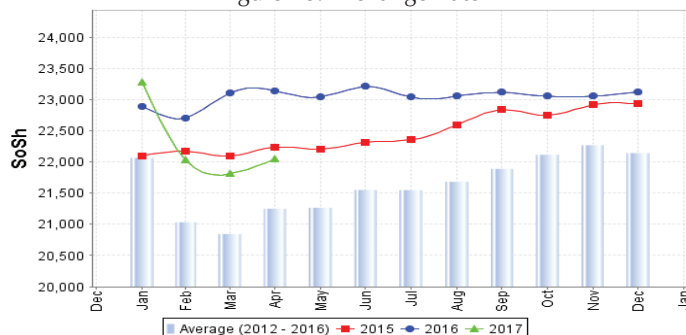
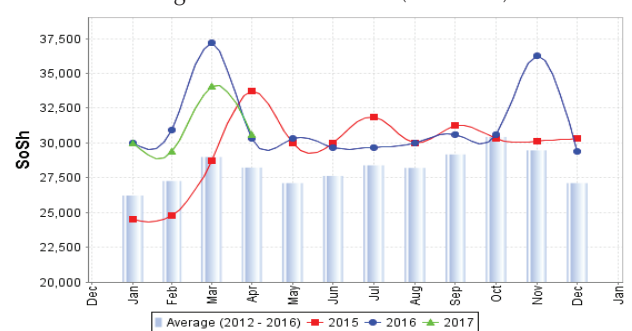


Figure 11: Water Drum (200 litres)



# Regional analysis: Sorghum Belt Regions (Bay, Bakool, Gedo and Hiran)

Indicator	5-Year Average (2012-2016)	Apr-16	Mar-17	Apr-17 Nominal Price	Apr-17 Real (Deflated) Price	% Change Previous Month	% Change Same Month Previous Year	% Change 5-year avg (2012-2016)
<b>Imported Commodities Prices</b>								
Diesel 1 litre	29,896	22,917	24,271	24,583	9,066	1%	7%	-18%
Imported Red Rice 1kg	18,362	18,046	19,125	19,208	7,062	0%	6%	5%
Petrol 1 litre	30,439	26,167	27,521	27,083	9,998	-2%	4%	-11%
Sugar	20,213	19,417	22,708	22,188	8,173	-2%	14%	10%
Vegetable Oil 1 litre	39,806	34,250	37,146	37,042	13,711	0%	8%	-7%
Wheat Flour 1kg	17,613	17,806	18,479	18,104	6,650	-2%	2%	3%
Wheat Grain 1kg	13,577	18,000	18,535	19,231	7,070	4%	7%	42%
<b>Cereal Prices</b>								
Red Sorghum 1kg	6,761	7,015	12,586	12,823	4,681	2%	83%	90%
White Maize 1kg	8,800	8,930	12,461	12,766	4,660	2%	43%	45%
<b>Livestock &amp; Livestock Product Prices</b>								
Camel Local Quality (Head)	12,360,680	11,690,000	9,620,000	10,163,000	3,789,163	6%	-13%	-18%
Cattle Local Quality (Head)	3,755,744	3,628,125	2,141,071	2,550,357	950,798	19%	-30%	-32%
Fresh Camel Milk 1 litre	19,956	20,063	26,250	27,932	10,314	6%	39%	40%
Goat Export Quality (Head)	1,600,131	1,535,682	1,268,636	1,355,682	505,365	7%	-12%	-15%
Goat Local Quality (Head)	997,688	840,208	629,375	677,292	252,428	8%	-19%	-32%
<b>Other Essential Items</b>								
Charcoal 50kg	151,518	151,841	136,341	153,295	57,056	12%	1%	1%
Cowpeas 1 kg	22,908	21,150	33,229	35,327	13,072	6%	67%	54%
Unskilled Labor Wage Rate	97,909	101,458	86,458	93,438	34,738	8%	-8%	-5%
Firewood Bundle	6,550	6,000	6,083	6,083	2,168	0%	1%	-7%
Local Sesame Oil 1 litre	72,173	61,438	76,250	79,167	29,417	4%	29%	10%
Exchange Rate (Somali Shilling per USD)	21,375	22,940	23,590	23,819	8,781	1%	4%	11%
<b>Terms of Trade</b>								
Labour Wage (Daily)/ Cereal (Sorghum(Kg)	14	14	7	7	-	0%	-50%	-50%
Local Goat (Head)/ Cereal (Sorghum(Kg)	152	120	50	53	-	6%	-56%	-65%
<b>Price Indices</b>								
Consumer Price Index	-	218	265	268	-	1%	23%	-

Figure 12: Trends in Cereal Prices

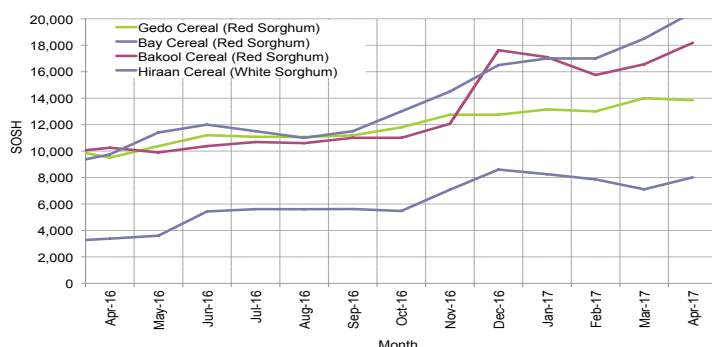


Figure 13: Trends in Wage Rates and Relative Purchasing Power

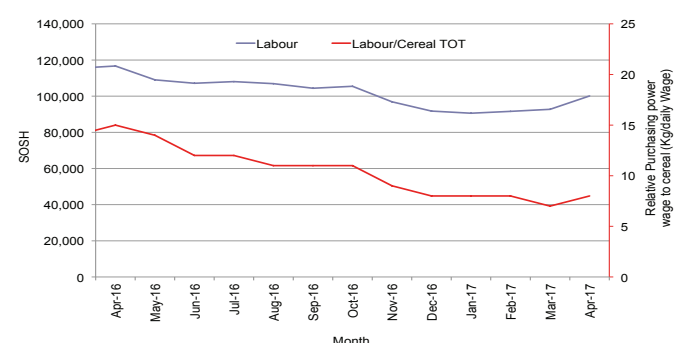


Figure 14: Imported Commodity Prices Compared to Exchange Rate

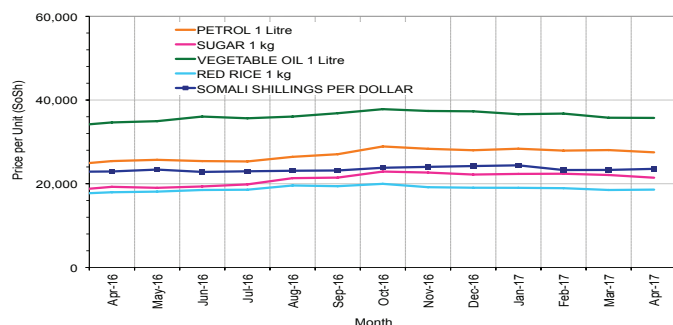


Figure 15: Goat Local Quality

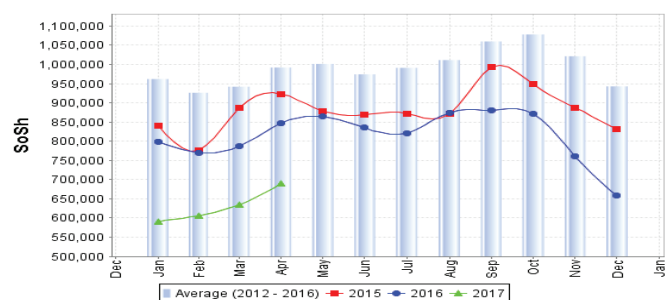


Figure 16: Exchange Rate

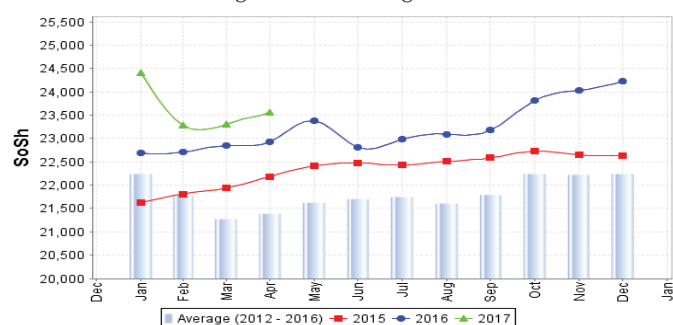
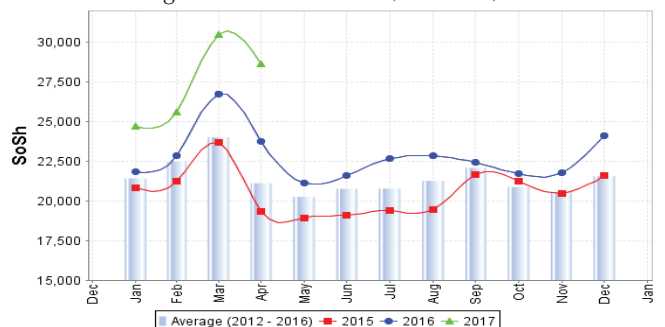


Figure 17: Water Drum (200 litres)



# Regional analysis: Shabelle Regions

Indicator	5-Year Average (2012-2016)	Apr-16	Mar-17	Apr-17 Nominal Price	Apr-17 Real (Deflated) Price	% Change Previous Month	% Change Same Month Previous Year	% Change 5-year avg (2012-2016)
<b>Imported Commodities Prices</b>								
Diesel 1 litre	24,800	18,500	15,292	16,250	5,959	6%	-12%	-34%
Imported Red Rice 1kg	16,075	17,667	15,875	15,367	5,630	-3%	-13%	-4%
Petrol 1 litre	27,935	24,917	19,083	18,867	6,935	-1%	-24%	-32%
Sugar	17,541	18,250	18,167	17,900	6,574	-1%	-2%	2%
Vegetable Oil 1 litre	29,155	27,750	27,833	28,000	10,340	1%	1%	-4%
Wheat Flour 1kg	15,750	17,500	14,583	13,400	4,896	-8%	-23%	-15%
Wheat Grain 1kg	16,676	17,000	19,500	-	-	-	-	-
<b>Cereal Prices</b>								
Red Sorghum 1kg	9,791	9,517	9,906	12,380	4,516	25%	30%	26%
White Maize 1kg	7,692	7,420	8,125	9,385	3,399	16%	26%	22%
<b>Livestock &amp; Livestock Product Prices</b>								
Camel Local Quality (Head)	17,715,000	18,655,000	16,393,750	19,201,667	7,159,220	17%	3%	8%
Cattle Local Quality (Head)	5,699,500	5,167,500	3,881,250	3,138,750	1,170,179	-19%	-39%	-45%
Fresh Camel Milk 1 litre	21,790	21,750	20,583	26,100	9,631	27%	20%	20%
Goat Export Quality (Head)	1,871,225	1,911,875	1,885,625	2,212,000	824,642	17%	16%	18%
Goat Local Quality (Head)	1,351,016	1,304,167	1,355,833	1,310,833	488,643	-3%	1%	-3%
<b>Other Essential Items</b>								
Charcoal 50kg	130,668	135,583	119,750	123,083	45,791	3%	-9%	-6%
Cowpeas 1 kg	20,090	20,025	27,799	35,028	12,960	26%	75%	74%
Unskilled Labor Wage Rate	70,699	66,042	65,000	58,917	21,867	-9%	-11%	-17%
Firewood Bundle	6,375	6,417	5,333	5,833	2,075	9%	-9%	-9%
Local Sesame Oil 1 litre	55,945	48,583	49,125	51,350	19,046	5%	6%	-8%
Exchange Rate (Somali Shilling per USD)	21,113	22,850	22,554	23,050	8,494	2%	1%	9%
<b>Terms of Trade</b>								
Labour Wage (Daily)/ Cereal (Maize(Kg))	9	9	8	6	-	-25%	-33%	-33%
Local Goat (Head)/ Cereal (Maize(Kg))	181	176	167	140	-	-16%	-20%	-23%
<b>Price Indices</b>								
Consumer Price Index	-	218	265	268	-	1%	23%	-

Figure 18: Trends in Cereal Prices

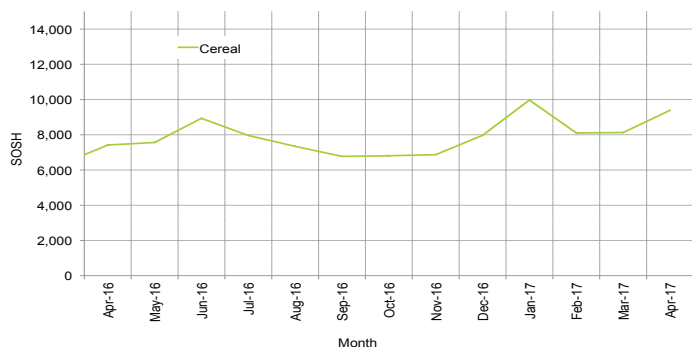


Figure 19: Trends in Wage Rates and Relative Purchasing Power

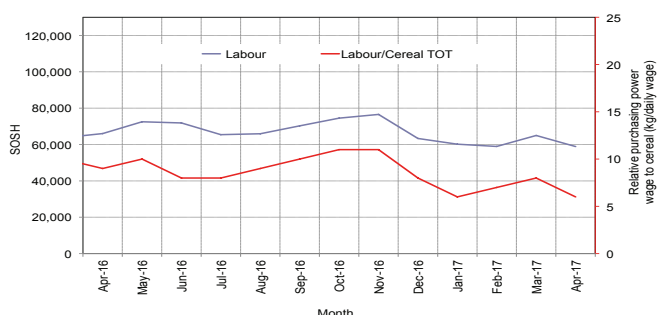


Figure 20: Imported Commodity Prices Compared to Exchange Rate

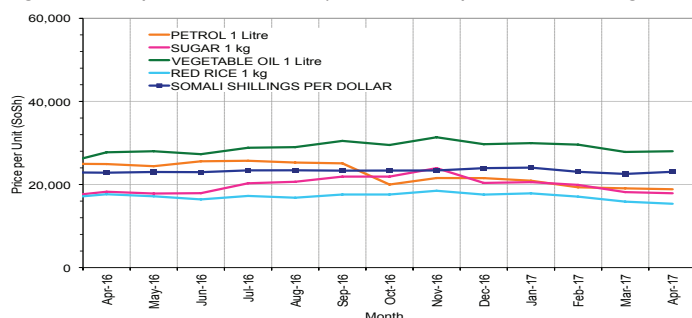


Figure 21: Goat Local Quality

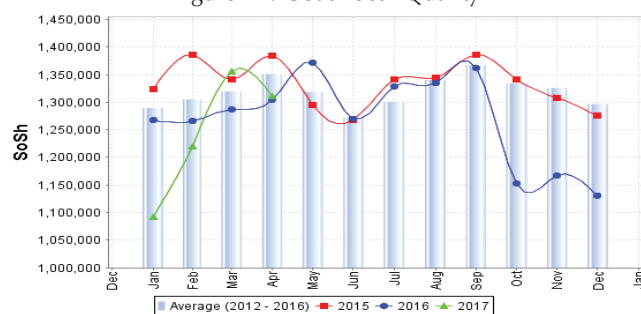


Figure 22: Exchange Rate

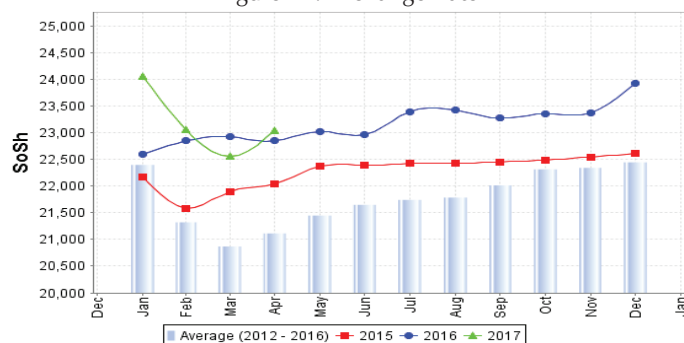
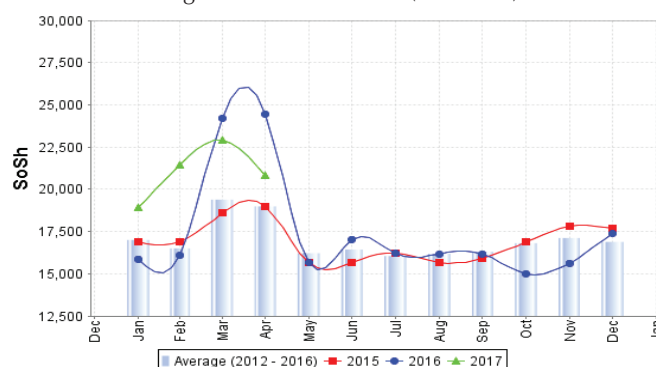


Figure 23: Water Drum (200 litres)





# Regional analysis: Banadir Region

Indicator	5-Year Average (2012-2016)	Apr-16	Mar-17	Apr-17 Nominal Price	Apr-17 Real (Deflated) Price	% Change Previous Month	% Change Same Month Previous Year	% Change 5-year avrg (2012-2016)
<b>Imported Commodities Prices</b>								
Diesel 1 litre	19,811	15,600	12,250	12,333	4,498	1%	-21%	-38%
Imported Red Rice 1kg	13,328	12,225	12,167	12,250	4,467	1%	0%	-8%
Petrol 1 litre	21,255	17,067	16,000	16,167	5,928	1%	-5%	-24%
Sugar	14,796	13,400	15,625	15,833	5,803	1%	18%	7%
Vegetable Oil 1 litre	24,671	21,025	22,750	22,500	8,289	-1%	7%	-9%
Wheat Flour 1kg	11,743	11,258	11,042	11,042	4,017	0%	-2%	-6%
Wheat Grain 1kg	8,532	9,900	15,000	16,375	6,005	9%	65%	92%
<b>Cereal Prices</b>								
Red Sorghum 1kg	6,418	6,707	10,575	10,850	3,945	3%	62%	69%
White Maize 1kg	8,242	7,953	11,150	11,550	4,206	4%	45%	40%
<b>Livestock &amp; Livestock Product Prices</b>								
Camel Local Quality (Head)	-	-	-	-	-	-	-	-
Cattle Local Quality (Head)	-	-	-	-	-	-	-	-
Fresh Camel Milk 1 litre	21,148	25,533	27,333	26,333	9,718	-4%	3%	25%
Goat Export Quality (Head)	2,323,000	2,240,000	1,700,000	2,150,000	801,525	26%	-	-7%
Goat Local Quality (Head)	1,958,000	1,840,000	1,037,500	1,675,000	624,422	61%	-9%	-14%
<b>Other Essential Items</b>								
Charcoal 50kg	189,983	193,167	200,833	202,500	75,402	1%	5%	7%
Cowpeas 1 kg	17,140	16,967	35,417	35,875	13,276	1%	111%	109%
Unskilled Labor Wage Rate	115,250	126,667	85,000	77,917	28,951	-8%	-38%	-32%
Firewood Bundle	6,776	7,300	6,000	8,000	2,883	33%	10%	18%
Local Sesame Oil 1 litre	56,256	45,033	55,167	52,458	19,459	-5%	16%	-7%
Exchange Rate (Somali Shilling per USD)	20,748	22,540	21,775	22,350	8,233	3%	-1%	8%
<b>Terms of Trade</b>								
Labour Wage (Daily)/ Cereal (Maize(Kg))	14	16	8	7	-	-13%	-56%	-50%
Local Goat (Head)/ Cereal (Maize(Kg))	242	231	93	145	-	56%	-37%	-40%
<b>Price Indices</b>								
Consumer Price Index	-	218	265	268	-	1%	23%	-

Figure 24: Trends in Cereal Prices

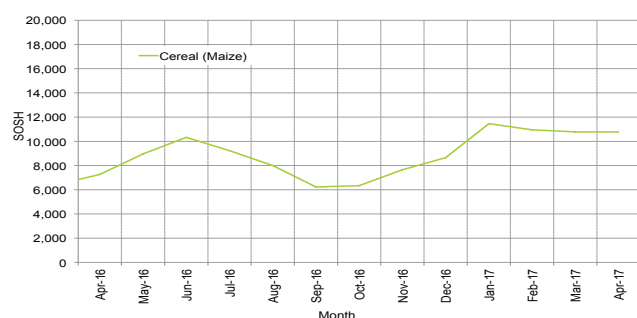


Figure 25: Bakara: Trends in Wage Rates and Relative Purchasing Power

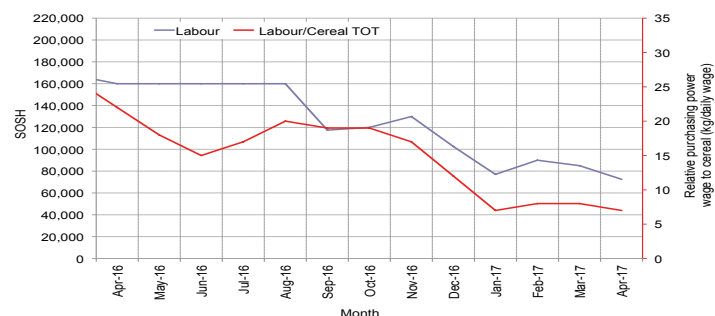


Figure 26: Imported Commodity Prices Compared to Exchange Rate

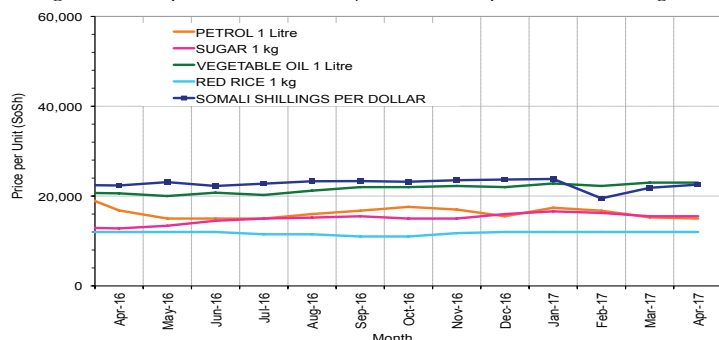


Figure 27: Goat Local Quality

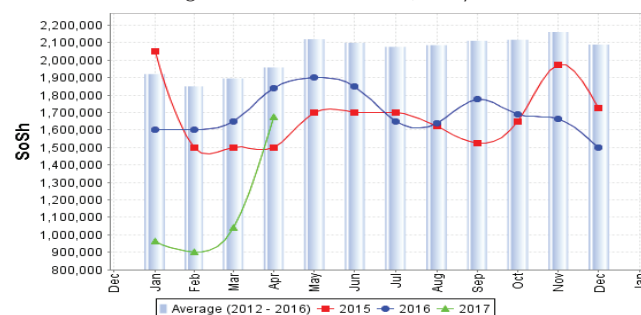


Figure 28: Exchange Rate

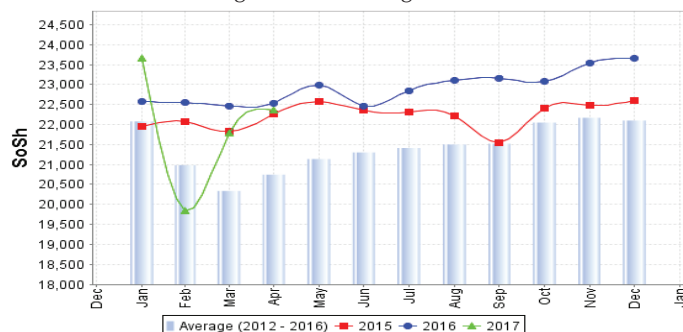
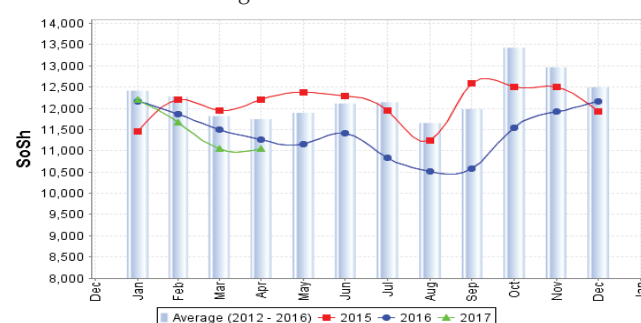


Figure 29: Wheat Flour



# Regional analysis: Central Regions

Indicator	5-Year Average (2012-2016)	Apr-16	Mar-17	Apr-17 Nominal Price	Apr-17 Real (Deflated) Price	% Change Previous Month	% Change Same Month Previous Year	% Change 5-year avrg (2012-2016)
<b>Imported Commodities Prices</b>								
Diesel 1 litre	25,886	19,000	22,800	20,750	7,834	-9%	9%	-20%
Imported Red Rice 1kg	18,646	17,100	18,700	18,200	6,859	-3%	6%	-2%
Petrol 1 litre	24,535	20,652	24,950	22,800	8,618	-9%	10%	-7%
Sugar	21,097	18,250	23,450	24,600	9,306	5%	35%	17%
Vegetable Oil 1 litre	40,408	33,950	40,600	40,600	15,424	0%	20%	0%
Wheat Flour 1kg	16,316	15,800	17,050	16,650	6,266	-2%	5%	2%
Wheat Grain 1kg	15,778	15,188	19,600	17,250	6,496	-12%	14%	9%
<b>Cereal Prices</b>								
Red Sorghum 1kg	12,298	11,500	15,500	16,333	6,145	5%	42%	33%
White Maize 1kg	13,120	13,000	17,250	17,000	6,400	-1%	31%	30%
<b>Livestock &amp; Livestock Product Prices</b>								
Camel Local Quality (Head)	11,231,875	13,200,000	9,437,500	9,500,000	3,632,335	1%	-28%	-15%
Cattle Local Quality (Head)	2,500,000	-	-	-	-	-	-	-
Fresh Camel Milk 1 litre	31,768	31,600	38,950	41,600	15,806	7%	32%	31%
Goat Export Quality (Head)	1,440,550	1,250,000	1,200,000	1,200,000	458,734	0%	-4%	-17%
Goat Local Quality (Head)	1,129,833	960,000	875,000	925,000	353,584	6%	-4%	-18%
<b>Other Essential Items</b>								
Charcoal 50kg	175,400	159,500	163,500	162,000	61,843	-1%	2%	-8%
Cowpeas 1 kg	20,877	18,650	38,850	39,000	14,812	0%	109%	87%
Unskilled Labor Wage Rate	86,646	94,000	94,000	94,000	35,842	0%	0%	8%
Firewood Bundle	34,120	33,000	35,500	36,000	13,665	1%	9%	6%
Local Sesame Oil 1 litre	88,420	82,200	81,850	82,000	31,254	0%	0%	-7%
Exchange Rate (Somali Shilling per USD)	22,058	23,900	26,000	26,400	9,994	2%	10%	20%
<b>Terms of Trade</b>								
Labour Wage (Daily)/ Cereal (Rice(Kg))	4	5	5	5	-	0%	0%	25%
Local Goat (Head)/ Cereal (Rice(Kg))	60	56	47	51	-	9%	-9%	-15%
Camel (Head)/Cereal (Kg)	614	772	505	522	-	3%	-32%	-15%
<b>Price Indices</b>								
Consumer Price Index	-	200	263	262	-	-1%	31%	-

Figure 30: Trends in Cereal Prices

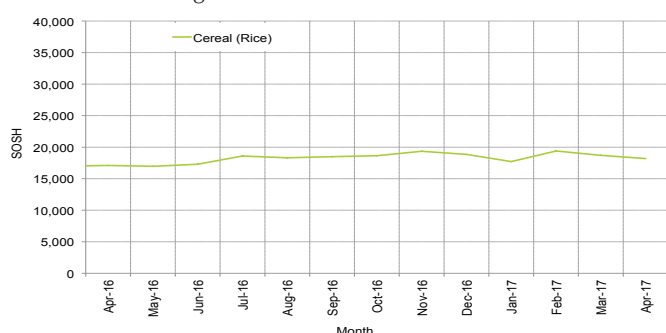


Figure 31: Trends in wage rates and relative purchasing power

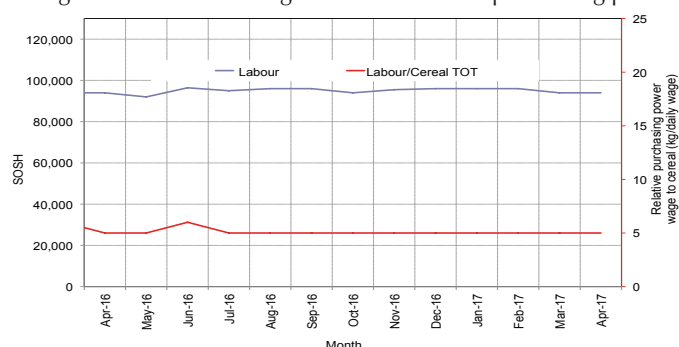


Figure 32: Imported Commodity Prices Compared to Exchange Rate

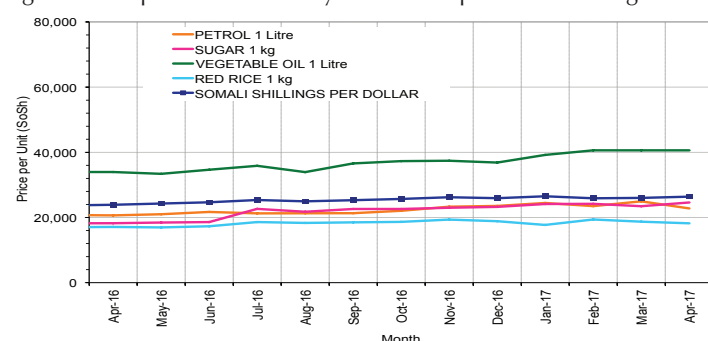


Figure 33: Goat Local Quality

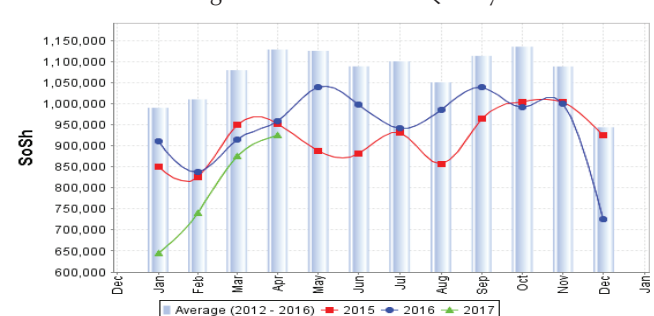


Figure 34: Exchange Rate

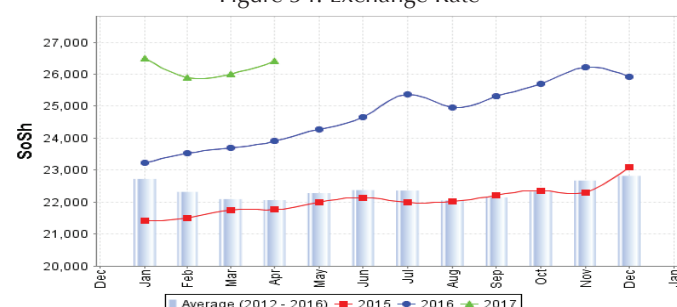
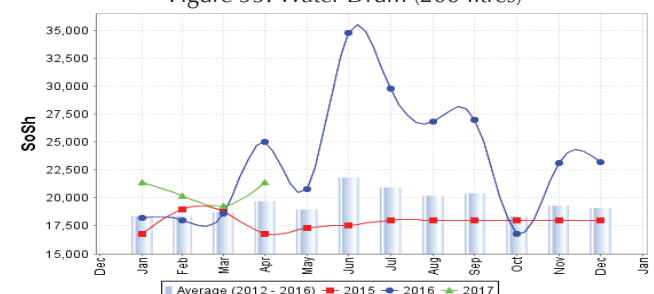


Figure 35: Water Drum (200 litres)



# Regional analysis: Northeast Regions

Indicator	5-Year Average (2012-2016)	Apr-16	Mar-17	Apr-17 Nominal Price	Apr-17 Real (Deflated) Price	% Change Previous Month	% Change Same Month Previous Year	% Change 5-year avrg (2012-2016)
<b>Imported Commodities Prices</b>								
Diesel 1 litre	23,220	16,107	17,500	18,214	5,979	4%	13%	-22%
Imported Red Rice 1kg	18,258	15,875	17,000	17,589	5,771	3%	11%	-4%
Petrol 1 litre	23,105	20,089	20,857	21,929	7,219	5%	9%	-5%
Sugar	21,048	18,321	22,429	22,089	7,273	-2%	21%	5%
Vegetable Oil 1 litre	39,797	33,107	33,964	34,643	11,463	2%	5%	-13%
Wheat Flour 1kg	17,230	15,375	16,607	17,214	5,645	4%	12%	0%
Wheat Grain 1kg	29,127	29,850	31,700	31,600	10,447	0%	6%	8%
<b>Cereal Prices</b>								
Red Sorghum 1kg	21,960	25,125	26,875	26,500	8,745	-1%	5%	21%
White Maize 1kg	20,230	24,250	24,000	23,500	7,744	-2%	-3%	16%
<b>Livestock &amp; Livestock Product Prices</b>								
Camel Local Quality (Head)	14,986,099	14,430,000	10,825,000	11,062,500	3,692,186	2%	-23%	-26%
Cattle Local Quality (Head)	8,370,000	8,750,000	3,625,000	5,250,000	1,752,171	45%	-40%	-37%
Fresh Camel Milk 1 litre	38,804	43,694	57,367	59,217	19,665	3%	36%	53%
Goat Export Quality (Head)	1,373,620	1,210,000	1,211,667	1,197,500	399,585	-1%	-1%	-13%
Goat Local Quality (Head)	1,339,800	1,162,143	1,105,357	1,146,429	382,539	4%	-1%	-14%
<b>Other Essential Items</b>								
Charcoal 50kg	351,614	350,357	360,357	355,357	118,506	-1%	1%	1%
Cowpeas 1 kg	39,198	37,167	41,542	42,708	14,154	3%	15%	9%
Unskilled Labor Wage Rate	134,214	136,071	135,179	134,821	44,899	0%	-1%	0%
Firewood Bundle	34,011	33,857	39,107	40,500	13,418	4%	20%	19%
Local Sesame Oil 1 litre	98,335	104,000	100,000	101,250	33,694	1%	-3%	3%
Exchange Rate (Somali Shilling per USD)	21,461	22,075	26,393	26,643	8,793	1%	21%	24%
<b>Terms of Trade</b>								
Labour Wage (Daily)/ Cereal (Rice(Kg))	7	9	8	8	-	0%	-11%	14%
Local Goat (Head)/ Cereal (Rice(Kg))	74	73	65	65	-	0%	-11%	-12%
<b>Price Indices</b>								
Consumer Price Index	-	252	304	300	-	-1%	19%	-

Figure 36: Trends in Cereal Prices

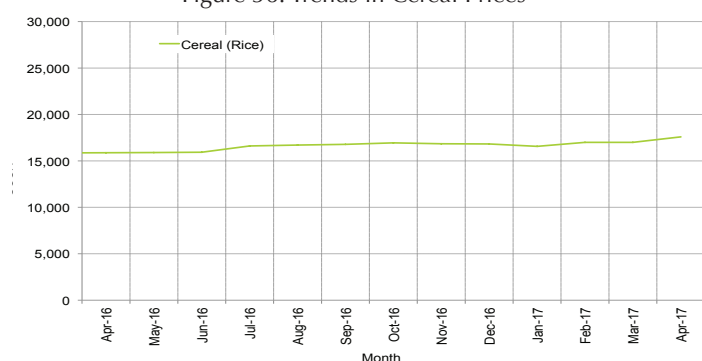


Figure 37: Trends in Wage Rates and Relative Purchasing Power

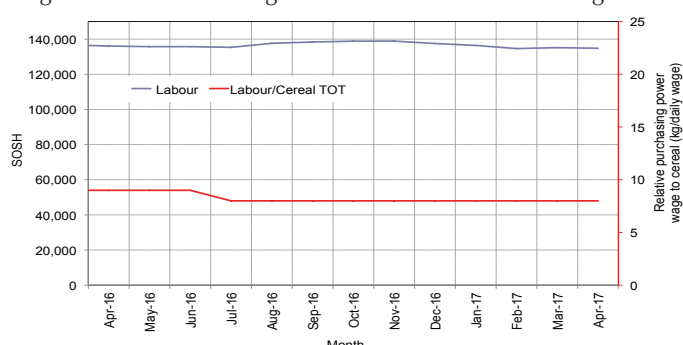


Figure 38: Imported Commodity Prices Compared to Exchange Rate

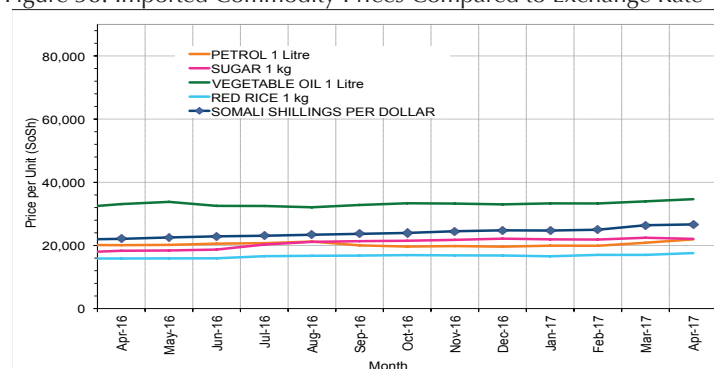


Figure 39: Goat Local Quality

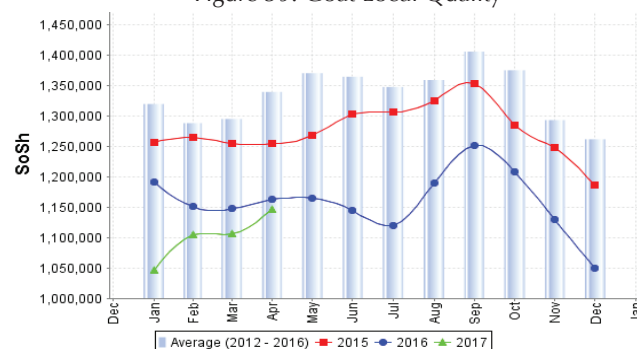


Figure 40: Exchange Rate

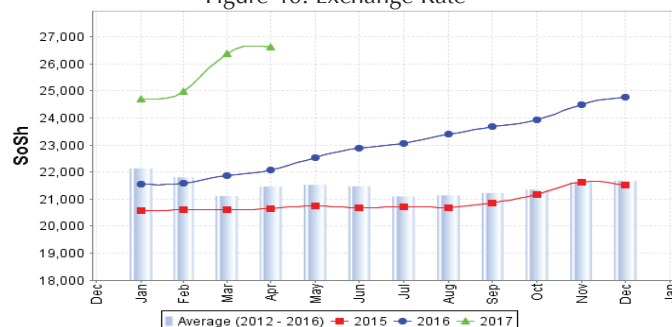
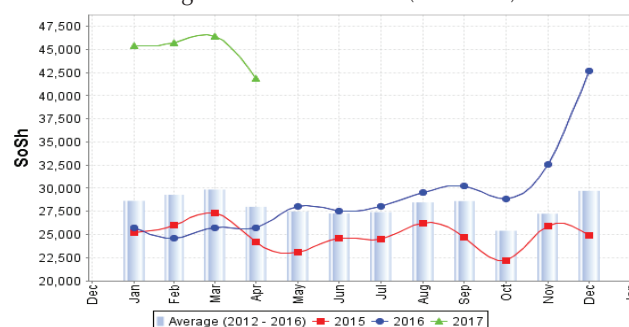


Figure 41: Water Drum (200 litres)





# Regional analysis: Northwest Regions

Indicator	5-Year Average (2012-2016)	Apr-16	Mar-17	Apr-17 Nominal Price	Apr-17 Real (Deflated) Price	% Change Previous Month	% Change Same Month Previous Year	% Change 5-year avg (2012-2016)
<b>Imported Commodities Prices</b>								
Diesel 1 litre	6,449	4,850	4,840	5,800	3,520	20%	20%	-10%
Imported Red Rice 1kg	5,047	5,100	4,900	5,800	3,520	18%	14%	15%
Petrol 1 litre	7,135	6,390	6,268	7,060	4,306	13%	10%	-1%
Sugar	5,784	5,500	6,100	6,500	3,957	7%	18%	12%
Vegetable Oil 1 litre	12,312	11,900	14,400	13,800	8,512	-4%	16%	12%
Wheat Flour 1kg	4,476	4,780	4,000	5,400	3,270	35%	13%	21%
Wheat Grain 1kg	3,480	4,250	3,860	4,625	2,786	20%	9%	33%
<b>Cereal Prices</b>								
White Sorghum 1kg	3,646	4,050	4,005	5,000	3,020	25%	23%	37%
Yellow Maize 1kg	3,753	4,300	4,900	4,900	2,958	0%	14%	31%
<b>Livestock &amp; Livestock Product Prices</b>								
Camel Local Quality (Head)	3,539,833	4,444,583	3,755,833	4,325,000	2,699,066	15%	-3%	22%
Cattle Local Quality (Head)	2,170,858	2,405,833	2,531,250	2,290,000	1,429,054	-10%	-5%	5%
Fresh Camel Milk 1 litre	6,597	8,810	7,825	11,500	7,077	47%	31%	74%
Goat Export Quality (Head)	433,392	386,438	407,167	445,625	278,008	9%	15%	3%
Goat Local Quality (Head)	323,330	293,700	349,833	329,750	205,692	-6%	12%	2%
<b>Other Essential Items</b>								
Charcoal 50kg	48,650	63,750	60,650	70,050	43,617	15%	10%	44%
Cowpeas 1 kg	11,077	13,375	14,700	15,500	9,573	5%	16%	40%
Unskilled Labor Wage Rate	48,020	60,500	58,400	60,000	37,345	3%	-1%	25%
Firewood Bundle	3,866	5,000	5,000	5,333	3,228	7%	7%	38%
Local Sesame Oil 1 litre	30,375	32,125	33,150	36,625	22,757	10%	14%	21%
Exchange Rate (Somaliland Shilling per USD)	6,953	7,290	8,010	8,505	5,208	6%	17%	22%
<b>Terms of Trade</b>								
Labour Wage (Daily)/ Cereal (Rice(Kg))	9	12	12	10	-	-17%	-17%	11%
Local Goat (Head)/ Cereal (Rice(Kg))	64	58	71	57	-	-20%	-2%	-11%
<b>Price Indices</b>								
Consumer Price Index	-	137	143	160	-	12%	17%	-

Figure 42: Trends in Cereal Prices

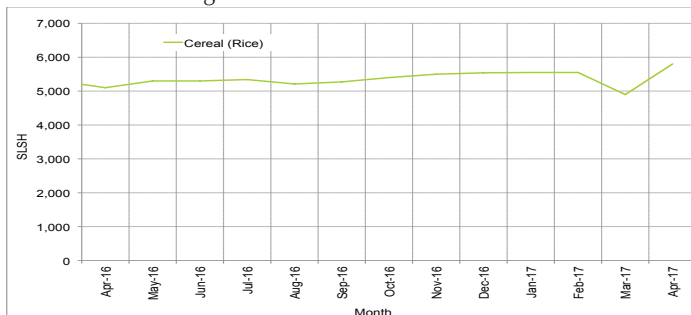


Figure 43: Trends in Wage Rates and Relative Purchasing Power

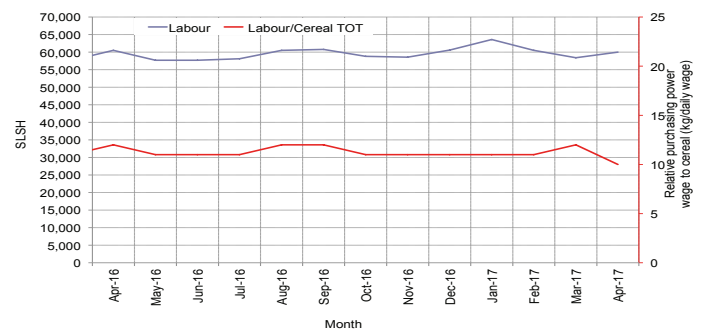


Figure 44: Imported Commodity Prices Compared to Exchange Rate

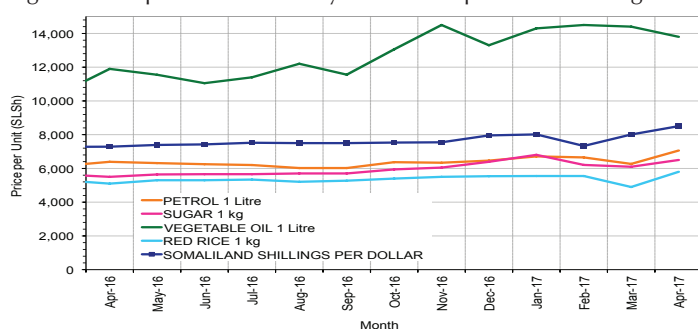


Figure 45: Goat Local Quality

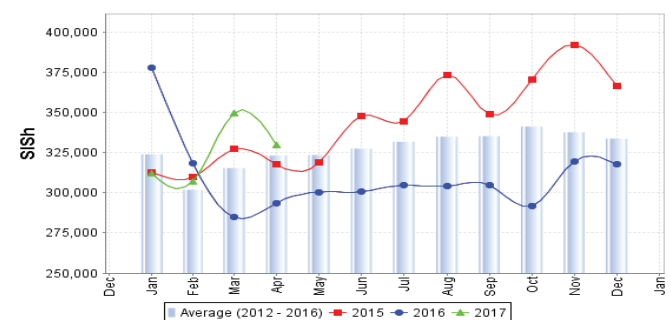


Figure 46: Exchange Rate

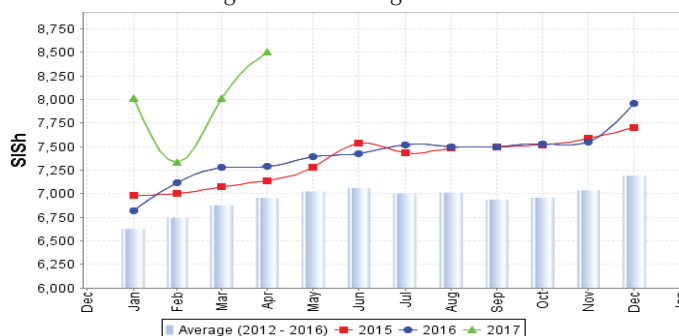


Figure 47: Water Drum (200 litres)

