

# Market Data Update

## Highlights

### Inflation:

*SoSh (Somali shilling)-using areas:* Consumer Price Index (CPI) increased in April 2016 month-on-month (1-2%) in the South and Northeast regions and remained stable in Central regions. Compared to a year ago, the CPI increased in Central (3%) and Northeast (7%), but declined (3%) in southern regions. These annual changes in CPI were mostly driven by cereal (red sorghum) price trends.

*SISh (Somaliland shilling)-using areas:* The CPI increased month-on-month (1%) and year-on-year (9%) due to increase in cereal (red sorghum) price in both periods of comparison.

### Exchange rate:

*SoSh-using areas:* The exchange rates between SoSh and the United States Dollar (USD) indicated stability or marginal monthly changes (1-2%) in April 2016. The SoSh depreciated compared to a year ago across most markets.

*SISh-using areas:* The SISh remained stable against the USD in April 2016 month-on-month while it depreciated (2%) year-on-year.

**Local grain** prices changed at mild rates (by less than +/- 10%) month-on-month in most parts of the country apart from Banadir and Shabelle regions where price increases were more pronounced. The most significant increase of 50 percent was recorded in Middle Shabelle triggered by reduced supplies into the markets as a result of high retention of cereals by local farmers due to drying up of Shabelle river (in March). Annual comparison indicates lower prices for local grains in most regions of the country. However, prices are higher (8-14%) in the markets of Gedo, Central and Northeast due to reduced cereal supply from the producing regions, limited humanitarian intervention and higher transportation costs caused by trade disruptions by insurgents.

**Prices of imported food** (rice, sugar, vegetable oil, wheat flour) mostly exhibited relative stability or mild (less than 10%) monthly changes in local currency terms. However, prices of all food imports increased (10-15%) in Middle Shabelle (Adan Yabal) due to reduced supply as a result of increased cost of transport attributable to insecurity and increased check points by insurgents. The annual comparison indicates mild to moderate changes in the prices of most imported commodities in the country.

**Livestock prices** (for all species) changed at mild rates (less than 10%) month-on-month in most regions of the country. Similarly, milk prices (camel and cattle) also changed at mild rates (less than 10%) across the country apart from Bay region where milk prices increased 17-21 percent as a result of low supplies to main market due to pastoral migration away from urban areas. Annual comparison indicates mild changes (less than 10%) in livestock prices in most regions of the country. Milk prices (camel and cattle) exhibited mixed trend patterns in this period. However, milk (camel and cattle) prices increased by 25-29 percent in Bay region, which is attributable to reduced milk supply as a result of pastoral migration.

**Labor (unskilled) wages** either remained relatively stable or changed mildly (up to 8%) month-on-month across the country. Labor wages rose annually in most regions of the country; the highest increase of 69 percent was recorded in Bakool region, which is attributable to increased job opportunities in the context of improved security situation. Labor wages have declined by 21 percent in Lower Shabelle as a result of reduced agricultural labor opportunities due to delayed rains in agropastoral livelihoods.

**Terms of Trade (ToT)** between daily labor wage and local cereals either remained stable or changed by 1-3kg of cereals/daily labor wage month-on-month in most parts of the country; the exception is Middle Shabelle where the ToT declined (4kg/daily wage) due to increase in cereal prices (see above). The ToT between local quality goat and cereals has also decreased (by 63kg/goat) in Middle Shabelle, but remained relatively stable or changed at mild rates in other regions. Annual comparison indicates increase in both ToTs in most regions of the country. However, ToT between local quality goat and cereals (imported red rice) slightly declined (4-5kg/goat) in the past 12 months in the northern regions following declines in goat prices and/or increase in imported red rice prices.

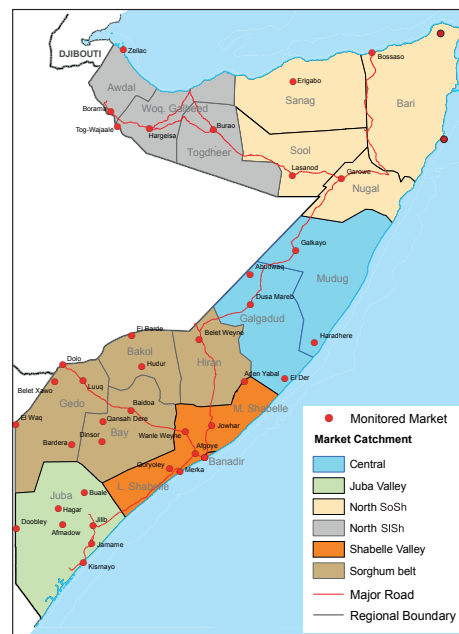
### Towns Affected by Trade Disruption (Bulo Burto, Wajid, Hudur and Diinsor)

**Labor (unskilled) wages** increased (5-14%) in all the four markets month-on-month. Annual comparison indicated increase in labor wages in all the markets with the highest increase (207%) being recorded in Wajid due to increased job opportunities in the area as a result of improved security conditions.

**Terms of Trade (ToTs)** between daily labor wage and local cereals changed (increase/decrease) at mild rates (1-2kg/daily labor) month-on-month across the affected towns. ToT between local quality goat and local cereals increased in all the markets and most significantly in Bulo-Burto (14kg/goat) following the increase in goat price and decline in white sorghum prices in April 2016. ToTs are higher compared to a year ago in all markets apart from Hudur where the ToT between local quality goat and local cereals declined by 15kg/goat (decreased local quality goat prices and increased red sorghum prices).

Local grain (red and white sorghum) prices remained stable month-on-month in Wajid and Dinsor, but rose in Hudur (8%) and declined in Bulo-Burto (11%). Annual price comparison indicated declines (35-49%) in Dinsor, Bulo-Burto and Wajid due to good harvests in the last two seasons (Deyr 2015/16 and Gu 2015) as well as humanitarian food interventions. In contrast, prices rose annually in Hudur (14%) due to less humanitarian distributions of red sorghum.

**Prices of imported food** items (rice, sugar, vegetable oil, wheat flour) remained stable or changed at mild rates month-on-month. Annual comparison indicated lower prices in Hudur, Wajid and Bulo-Burto and higher prices in Dinsor.



This Market Data Update is a monthly report that presents analysis of market information and is produced regularly as part of the monthly monitoring process.

The weekly price data is collected from 48 main markets and 51 rural markets throughout Somalia since 1995.

Market analysis is an integral part of all of FSNAU's annual food security projections and seasonal technical reports (Technical Reports on FSNAU Post Gu and Post Deyr Analysis).

Detailed market data are available online on [www.fsnau.org/ids](http://www.fsnau.org/ids).

# National Trends: CPI, Exchange Rates, Cereal Prices and Relative Purchasing Power

Table 1: ToT between Cereals (kg) and Daily Labour Wage Rate, by Region (April 2016)

Regions	April 2016 (kg)	Kg change from		
		March 2016	April 2015	April 5 yr Average (2011 - 2015)
Banadir/Mogadishu	22	-4	9	7
Bay	24	-2	8	8
Bakool	7	0	3	0
Gedo	17	2	-1	2
Juba	13	1	4	5
Shabelle	9	-1	1	1
Northwest	12	1	2	4
Northeast	9	0	0	3
Central	5	-1	0	1

Figure 1: Wheat Prices: Mogadishu and Bossaso Markets

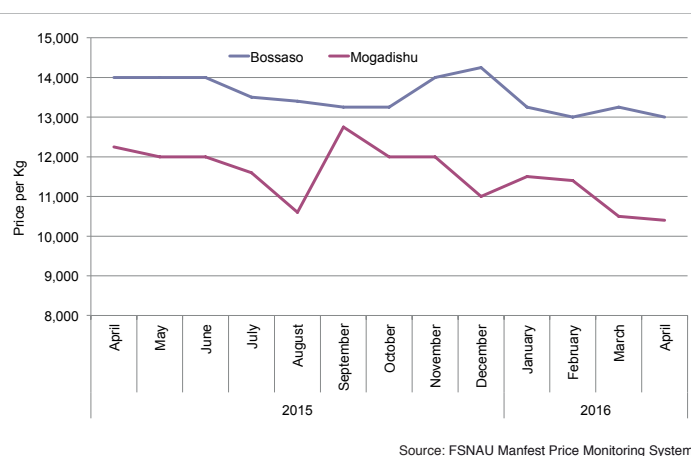


Figure 2: Terms of Trade Between Wage Rates and Selected Cereals

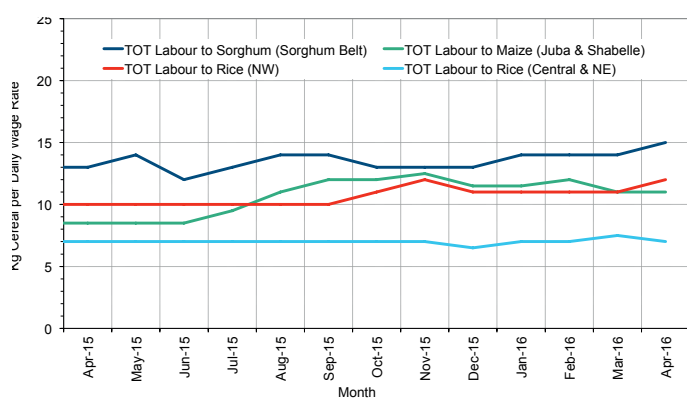


Figure 3: Monthly Exchange Rate for Selected Regions (SoSh and SiSh to USD)

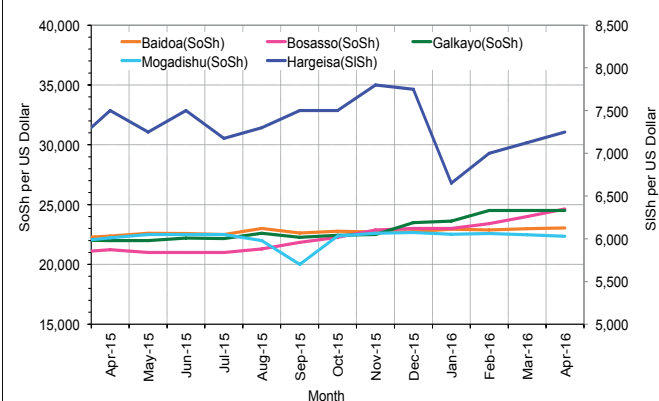


Figure 4: Monthly Trends in Consumer Price Index (CPI, March 2007=100)

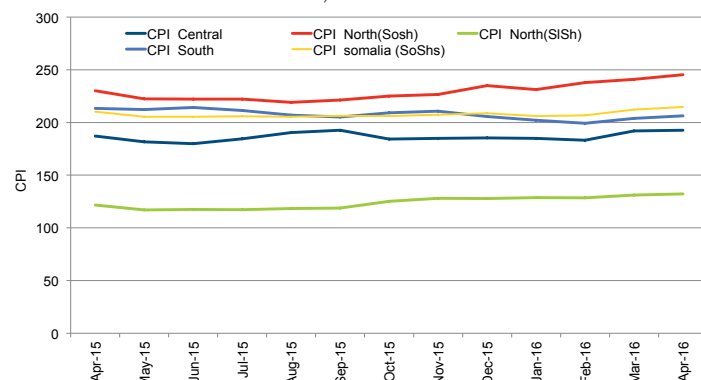
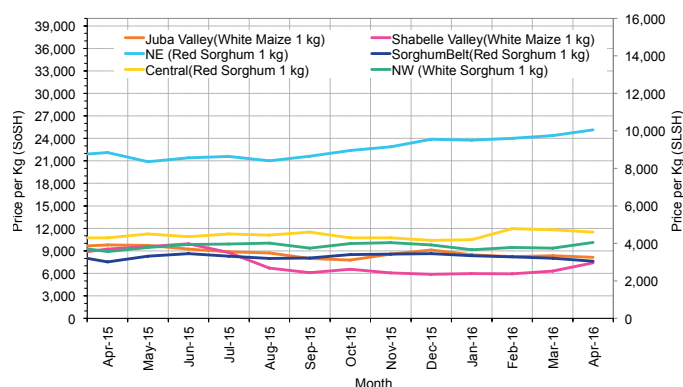


Figure 5: Monthly Trends in Local Cereal Prices



# Regional analysis: Juba Regions

Indicator	5-Year Average (2011-2015)	Apr-15	Mar-16	Apr-16 Nominal Price	Apr-16 Real (Deflated) Price	% Change Previous Month	% Change Same Month Previous Year	% Change 5-year avrg (2011-2015)
<b>Imported Commodities Prices</b>								
Diesel 1 litre	28,573	24,857	20,536	19,286	9,248	-6%	-22%	-33%
Imported Red Rice 1kg	17,768	16,000	14,857	14,914	7,129	0%	-7%	-16%
Petrol 1 litre	30,024	28,000	25,750	24,893	11,966	-3%	-11%	-17%
Sugar	21,350	16,893	15,143	16,114	7,711	6%	-5%	-25%
Vegetable Oil 1 litre	38,849	30,000	27,993	28,171	13,555	1%	-6%	-27%
Wheat Flour 1kg	17,188	15,857	15,071	15,357	7,344	2%	-3%	-11%
Wheat Grain 1kg	16,000	-	-	-	-	-	-	-
<b>Cereal Prices</b>								
Red Sorghum 1kg	8,750	7,500	8,000	8,000	3,778	0%	7%	-9%
White Maize 1kg	10,675	9,761	8,568	8,363	3,954	-2%	-14%	-22%
<b>Livestock &amp; Livestock Product Prices</b>								
Camel Local Quality (Head)	9,180,499	8,587,214	11,409,524	10,742,857	5,207,053	-6%	25%	17%
Cattle Local Quality (Head)	3,525,447	3,843,214	3,634,583	3,687,500	1,787,262	1%	-4%	5%
Fresh Camel Milk 1 litre	21,945	18,917	19,393	20,036	9,612	3%	6%	-9%
Goat Export Quality (Head)	1,385,091	1,302,857	1,245,000	1,277,857	619,288	3%	-2%	-8%
Goat Local Quality (Head)	866,949	858,679	847,500	837,786	405,982	-1%	-2%	-3%
<b>Other Essential Items</b>								
Charcoal 50kg	84,553	80,536	92,643	105,000	50,794	13%	30%	24%
Cowpeas 1 kg	25,205	26,714	23,625	23,714	11,394	0%	-11%	-6%
Unskilled Labor Wage Rate	85,418	86,750	102,250	108,679	52,578	6%	25%	27%
Firewood Bundle	8,068	6,857	8,107	8,107	3,830	0%	18%	0%
Local Sesame Oil 1 litre	74,905	74,500	55,036	56,343	27,210	2%	-24%	-25%
Exchange Rate (Somali Shilling per USD)	22,909	22,207	23,129	23,171	11,131	0%	4%	1%
<b>Terms of Trade</b>								
Labour Wage (Daily)/ Cereal (Maize(Kg))	8	9	12	13	-	8%	44%	63%
Local Goat (Head)/ Cereal (Maize(Kg))	89	88	99	100	-	1%	14%	12%
<b>Price Indices</b>								
Consumer Price Index	-	213	204	206	-	1%	-3%	-

Figure 6: Trends in Cereal Prices

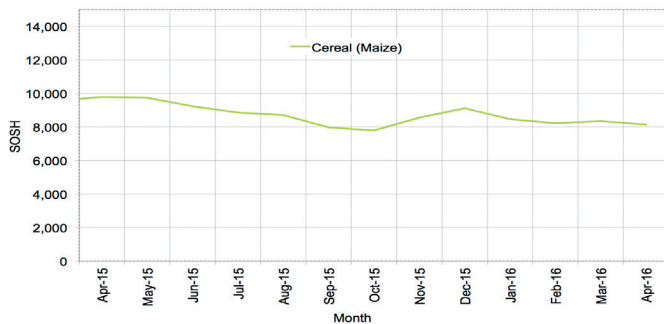


Figure 7: Trends in Wage Rates and Relative Purchasing Power

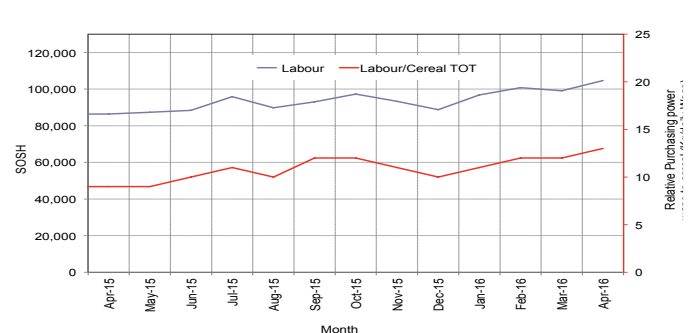


Figure 8: Imported Commodity Prices Compared to Exchange Rate

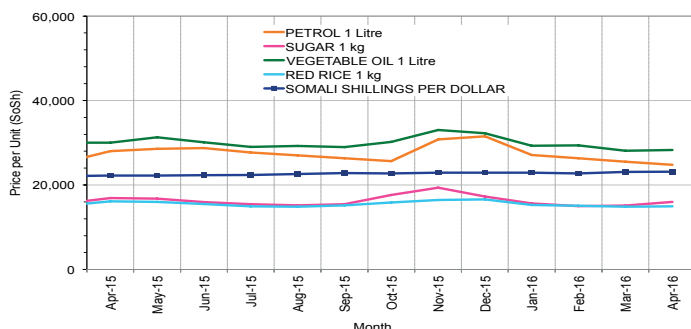


Figure 9: Goat Local Quality

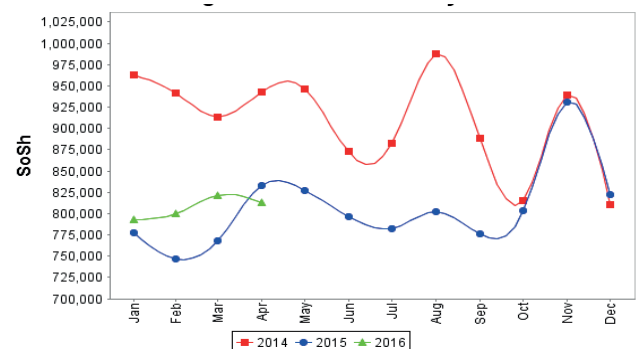


Figure 10: Exchange Rate

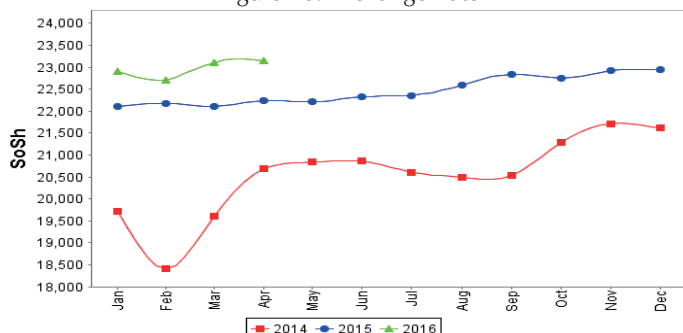
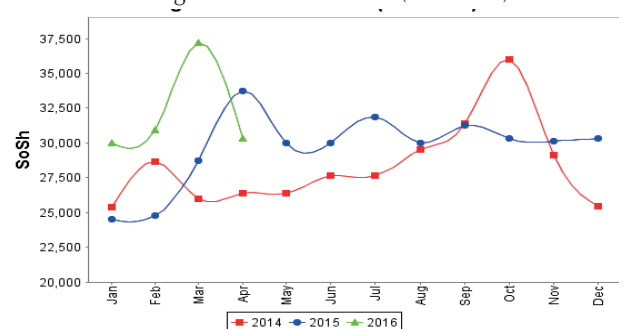


Figure 11: Water Drum (200 litres)



# Regional analysis: Sorghum Belt Regions (Bay, Bakool, Gedo and Hiran)

Indicator	5-Year Average (2011-2015)	Apr-15	Mar-16	Apr-16 Nominal Price	Apr-16 Real (Deflated) Price	% Change Previous Month	% Change Same Month Previous Year	% Change 5-year avrg (2011-2015)
<b>Imported Commodities Prices</b>								
Diesel 1 litre	32,549	29,818	22,273	22,636	10,872	2%	-24%	-30%
Imported Red Rice 1kg	20,458	18,727	17,527	17,977	8,614	3%	-4%	-12%
Petrol 1 litre	32,601	30,909	24,482	25,409	12,216	4%	-18%	-22%
Sugar	22,998	19,114	18,364	19,273	9,242	5%	1%	-16%
Vegetable Oil 1 litre	44,835	37,705	33,755	34,636	16,688	3%	-8%	-23%
Wheat Flour 1kg	18,672	18,318	17,273	17,807	8,531	3%	-3%	-5%
Wheat Grain 1kg	13,690	22,000	21,500	17,333	8,301	-19%	-21%	27%
<b>Cereal Prices</b>								
Red Sorghum 1kg	9,341	7,525	8,026	7,626	3,596	-5%	1%	-18%
White Maize 1kg	10,421	9,136	9,420	9,728	4,615	3%	6%	-7%
<b>Livestock &amp; Livestock Product Prices</b>								
Camel Local Quality (Head)	11,363,055	12,430,833	12,090,500	12,250,000	5,937,578	1%	-1%	8%
Cattle Local Quality (Head)	3,284,116	3,582,143	3,445,625	3,615,625	1,752,424	5%	1%	10%
Fresh Camel Milk 1 litre	21,830	17,975	20,282	21,841	10,487	8%	22%	0%
Goat Export Quality (Head)	1,470,717	1,559,773	1,452,909	1,506,591	730,157	4%	-3%	2%
Goat Local Quality (Head)	925,999	923,409	786,682	846,136	410,029	8%	-8%	-9%
<b>Other Essential Items</b>								
Charcoal 50kg	149,331	173,000	156,850	163,625	79,210	4%	-5%	10%
Cowpeas 1 kg	26,144	28,114	21,468	22,955	11,026	7%	-18%	-12%
Unskilled Labor Wage Rate	101,927	114,568	115,432	116,705	56,468	1%	2%	14%
Firewood Bundle	6,327	6,909	6,273	6,182	2,896	-1%	-11%	-2%
Local Sesame Oil 1 litre	76,165	80,179	65,214	64,500	31,164	-1%	-20%	-15%
Exchange Rate (Somali Shilling per USD)	23,081	22,189	22,853	22,934	11,016	0%	3%	-1%
<b>Terms of Trade</b>								
Labour Wage (Daily)/ Cereal (Sorghum(Kg)	13	15	14	15	-	7%	0%	15%
Local Goat (Head)/ Cereal (Sorghum(Kg)	128	123	98	111	-	13%	-10%	-13%
<b>Price Indices</b>								
Consumer Price Index	-	213	204	206	-	1%	-3%	-

Figure 12: Trends in Cereal Prices

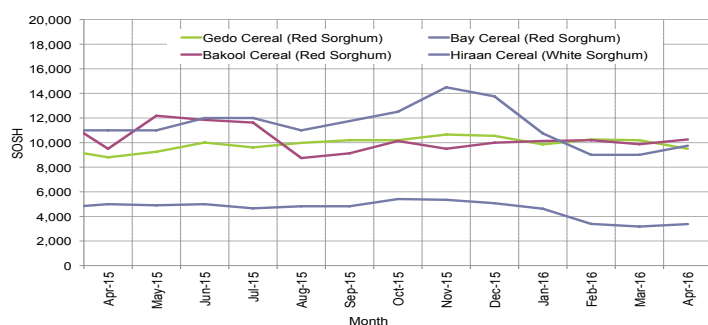


Figure 13: Trends in Wage Rates and Relative Purchasing Power

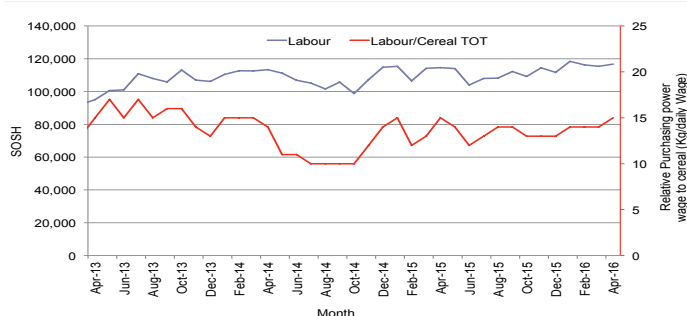


Figure 14: Imported Commodity Prices Compared to Exchange Rate

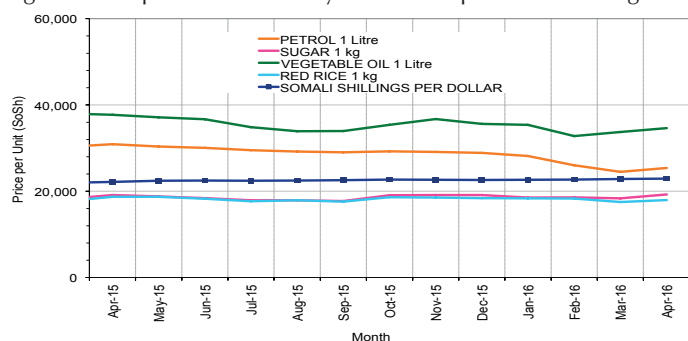


Figure 15: Goat Local Quality

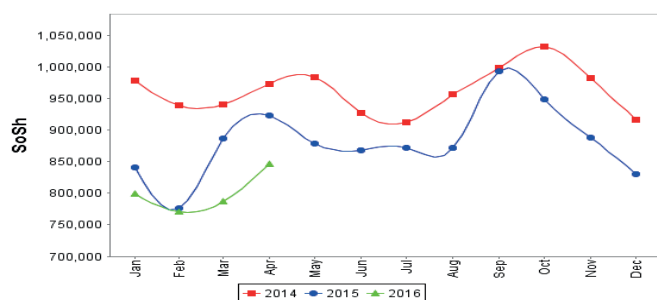


Figure 16: Exchange Rate

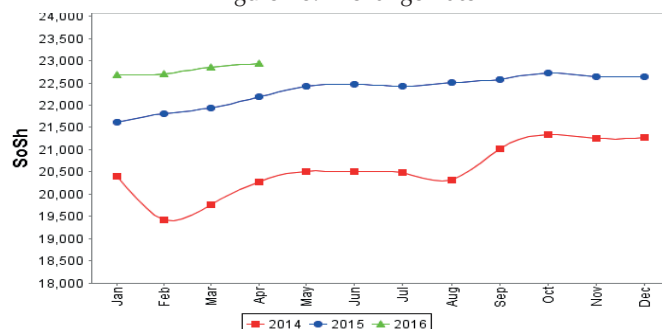
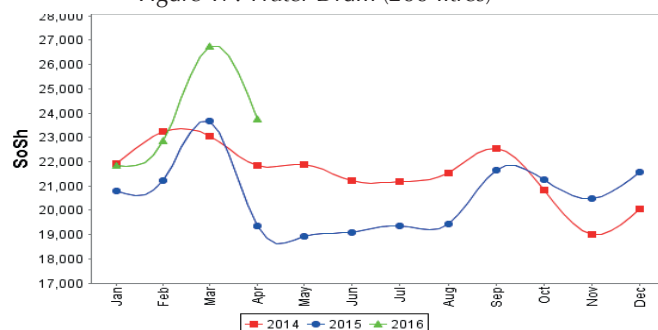


Figure 17: Water Drum (200 litres)



# Regional analysis: Shabelle Regions

Indicator	5-Year Average (2011-2015)	Apr-15	Mar-16	Apr-16 Nominal Price	Apr-16 Real (Deflated) Price	% Change Previous Month	% Change Same Month Previous Year	% Change 5-year avrg (2011-2015)
<b>Imported Commodities Prices</b>								
Diesel 1 litre	28,300	22,958	18,625	18,500	8,867	-1%	-19%	-35%
Imported Red Rice 1kg	16,876	15,708	16,667	17,667	8,463	6%	12%	5%
Petrol 1 litre	29,310	26,833	25,000	24,917	11,977	0%	-7%	-15%
Sugar	20,083	16,250	17,083	18,250	8,746	7%	12%	-9%
Vegetable Oil 1 litre	33,896	29,292	24,879	27,750	13,351	12%	-5%	-18%
Wheat Flour 1kg	16,558	15,500	16,167	17,500	8,382	8%	13%	6%
Wheat Grain 1kg	16,595	27,000	17,000	17,000	8,140	0%	-37%	2%
<b>Cereal Prices</b>								
Red Sorghum 1kg	11,352	10,833	8,428	9,517	4,513	13%	-12%	-16%
White Maize 1kg	9,387	9,252	6,306	7,420	3,497	18%	-20%	-21%
<b>Livestock &amp; Livestock Product Prices</b>								
Camel Local Quality (Head)	16,095,000	16,740,000	18,286,500	18,655,000	9,042,136	2%	11%	16%
Cattle Local Quality (Head)	5,094,500	5,700,000	5,189,500	5,167,500	2,504,631	0%	-9%	1%
Fresh Camel Milk 1 litre	22,548	25,833	20,250	21,750	10,442	7%	-16%	-4%
Goat Export Quality (Head)	1,768,900	1,806,875	1,750,625	1,911,875	926,602	9%	6%	8%
Goat Local Quality (Head)	1,243,766	1,384,583	1,287,083	1,304,167	632,041	1%	-6%	5%
<b>Other Essential Items</b>								
Charcoal 50kg	124,845	128,250	136,250	135,583	65,618	0%	6%	9%
Cowpeas 1 kg	22,228	22,190	17,857	20,025	9,606	12%	-10%	-10%
Unskilled Labor Wage Rate	68,991	74,375	63,750	66,042	31,911	4%	-11%	-4%
Firewood Bundle	6,025	6,875	5,667	6,417	3,010	13%	-7%	7%
Local Sesame Oil 1 litre	58,386	56,667	41,000	48,583	23,449	18%	-14%	-17%
Exchange Rate (Somali Shilling per USD)	22,888	22,047	22,925	22,850	10,976	0%	4%	0%
<b>Terms of Trade</b>								
Labour Wage (Daily)/ Cereal (Maize(Kg))	8	8	10	9	-	-10%	13%	13%
Local Goat (Head)/ Cereal (Maize(Kg))	155	150	204	176	-	-14%	17%	14%
<b>Price Indices</b>								
Consumer Price Index	-	213	204	206	-	1%	-3%	-

Figure 18: Trends in Cereal Prices

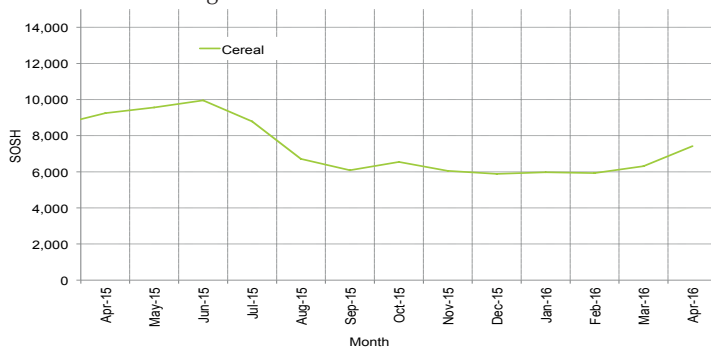


Figure 19: Trends in Wage Rates and Relative Purchasing Power

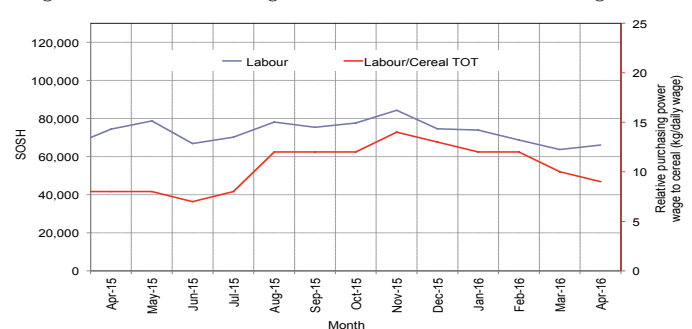


Figure 20: Imported Commodity Prices Compared to Exchange Rate

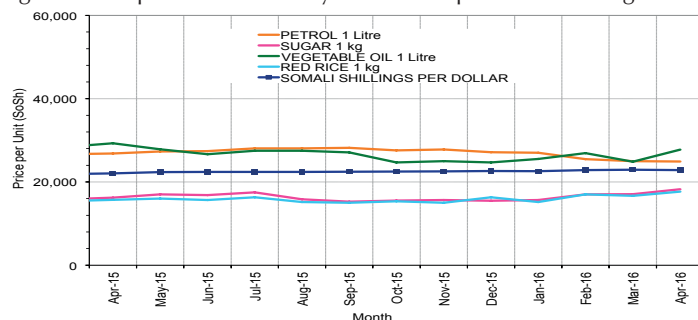


Figure 21: Goat Local Quality

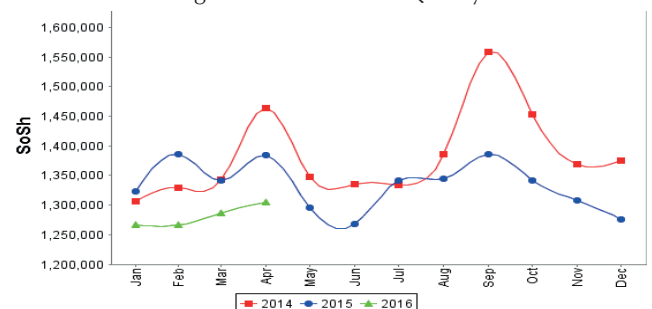


Figure 22: Exchange Rate

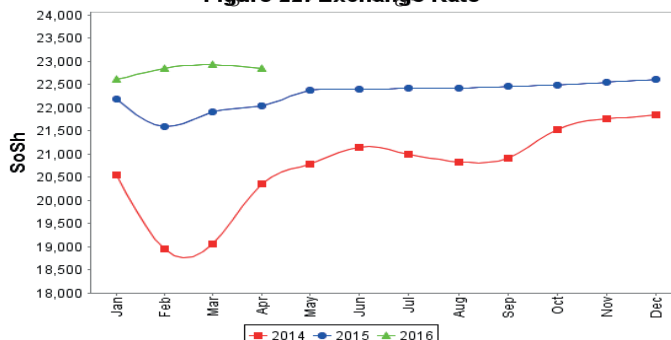
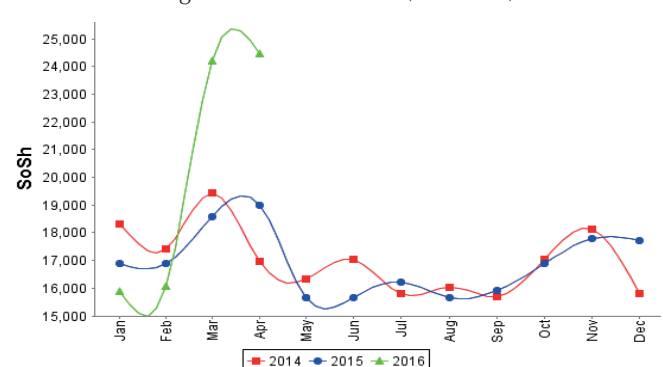


Figure 23: Water Drum (200 litres)





# Regional analysis: Banadir Region

Indicator	5-Year Average (2011-2015)	Apr-15	Mar-16	Apr-16 Nominal Price	Apr-16 Real (Deflated) Price	% Change Previous Month	% Change Same Month Previous Year	% Change 5-year avg (2011-2015)
<b>Imported Commodities Prices</b>								
Diesel 1 litre	23,097	19,125	16,750	16,467	7,882	-2%	-14%	-29%
Imported Red Rice 1kg	15,769	12,667	12,500	12,592	6,003	1%	-1%	-20%
Petrol 1 litre	23,870	20,583	19,583	17,950	8,601	-8%	-13%	-25%
Sugar	18,046	13,917	13,500	13,533	6,460	0%	-3%	-25%
Vegetable Oil 1 litre	30,764	23,125	21,542	22,096	10,610	3%	-4%	-28%
Wheat Flour 1kg	13,590	12,333	12,417	12,421	5,921	0%	1%	-9%
Wheat Grain 1kg	11,084	12,333	11,000	10,683	5,078	-3%	-13%	-4%
<b>Cereal Prices</b>								
Red Sorghum 1kg	9,339	8,596	6,458	7,191	3,386	11%	-16%	-23%
White Maize 1kg	10,240	10,104	7,096	8,310	3,928	17%	-18%	-19%
<b>Livestock &amp; Livestock Product Prices</b>								
Camel Local Quality (Head)	16,500,000	-	-	-	-	-	-	-
Cattle Local Quality (Head)	3,400,000	-	-	-	-	-	-	-
Fresh Camel Milk 1 litre	20,685	22,125	23,000	24,183	11,622	5%	9%	17%
Goat Export Quality (Head)	2,220,000	2,000,000	2,050,000	2,240,000	1,085,647	9%	-	1%
Goat Local Quality (Head)	1,942,125	1,731,250	1,737,500	1,851,250	897,216	7%	7%	-5%
<b>Other Essential Items</b>								
Charcoal 50kg	180,121	193,792	188,167	191,208	92,580	2%	-1%	6%
Cowpeas 1 kg	21,339	21,750	17,867	18,150	8,697	2%	-17%	-15%
Unskilled Labor Wage Rate	98,050	100,833	110,417	111,667	54,026	1%	11%	14%
Firewood Bundle	7,541	8,000	8,700	8,720	4,127	0%	9%	16%
Local Sesame Oil 1 litre	61,276	63,042	48,521	50,017	24,144	3%	-21%	-18%
Exchange Rate (Somali Shilling per USD)	22,675	22,317	22,438	22,687	10,897	1%	2%	0%
<b>Terms of Trade</b>								
Labour Wage (Daily)/ Cereal (Maize(Kg))	11	10	16	13	-	-19%	30%	18%
Local Goat (Head)/ Cereal (Maize(Kg))	222	171	245	223	-	-9%	30%	0%
<b>Price Indices</b>								
Consumer Price Index	-	213	204	206	-	1%	-3%	-

Figure 24: Trends in Cereal Prices

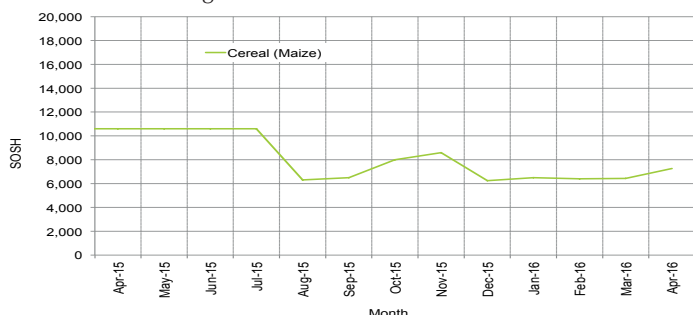


Figure 25: Bakara: Trends in Wage Rates and Relative Purchasing Power

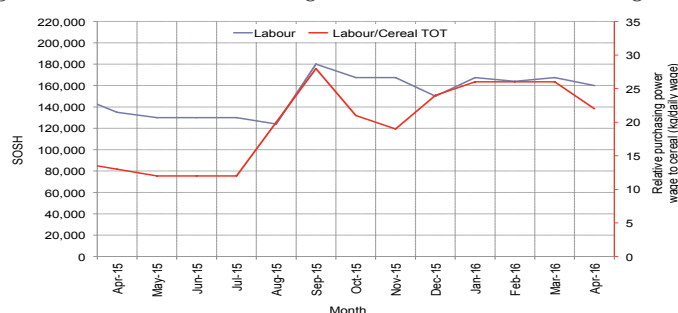


Figure 26: Imported Commodity Prices Compared to Exchange Rate

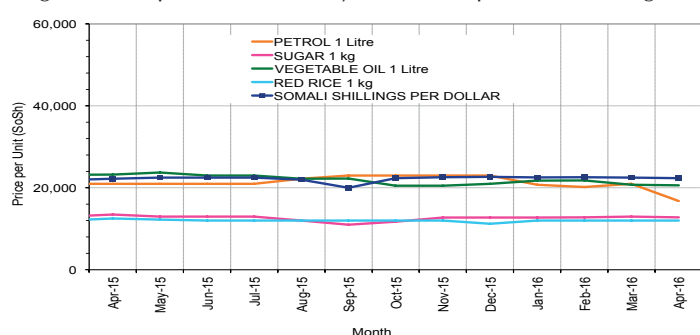


Figure 27: Goat Local Quality

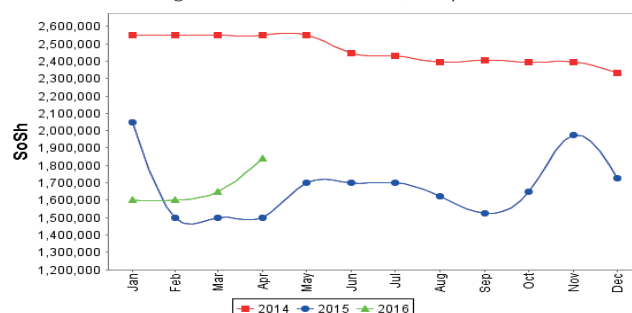


Figure 28: Exchange Rate

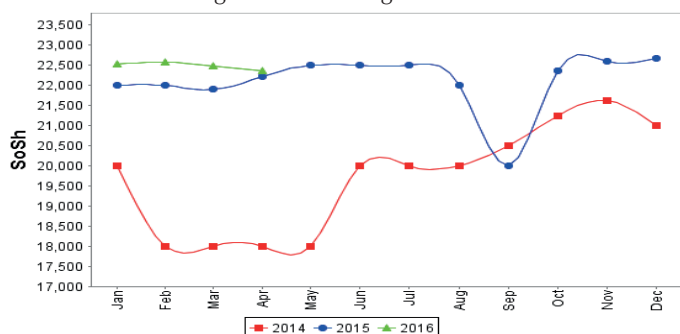
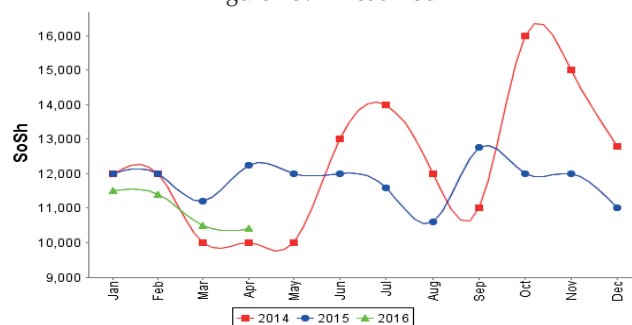


Figure 29: Wheat Flour



# Regional analysis: Central Regions

Indicator	5-Year Average (2011-2015)	Apr-15	Mar-16	Apr-16 Nominal Price	Apr-16 Real (Deflated) Price	% Change Previous Month	% Change Same Month Previous Year	% Change 5-year avg (2011-2015)
<b>Imported Commodities Prices</b>								
Diesel 1 litre	29,478	23,600	19,800	19,000	9,764	-4%	-19%	-36%
Imported Red Rice 1kg	21,126	17,150	17,000	17,100	8,778	1%	0%	-19%
Petrol 1 litre	26,735	23,650	20,752	20,652	10,622	0%	-13%	-23%
Sugar	24,607	19,000	18,200	18,250	9,375	0%	-4%	-26%
Vegetable Oil 1 litre	45,972	37,650	33,950	33,950	17,526	0%	-10%	-26%
Wheat Flour 1kg	17,976	15,900	15,850	15,800	8,103	0%	-1%	-12%
Wheat Grain 1kg	17,207	18,167	15,875	15,188	7,785	-4%	-16%	-12%
<b>Cereal Prices</b>								
Red Sorghum 1kg	13,858	10,750	11,800	11,500	5,871	-3%	7%	-17%
White Maize 1kg	14,420	12,600	13,000	13,000	6,649	0%	3%	-10%
<b>Livestock &amp; Livestock Product Prices</b>								
Camel Local Quality (Head)	10,183,875	12,275,000	13,200,000	13,200,000	6,853,003	0%	8%	30%
Cattle Local Quality (Head)	2,500,000	-	-	-	-	-	-	-
Fresh Camel Milk 1 litre	35,096	29,600	31,250	31,600	16,306	1%	7%	-10%
Goat Export Quality (Head)	1,505,550	1,418,750	1,156,250	1,250,000	648,868	8%	-12%	-17%
Goat Local Quality (Head)	1,167,893	952,500	915,000	960,000	498,307	5%	1%	-18%
<b>Other Essential Items</b>								
Charcoal 50kg	186,300	163,500	159,000	159,500	82,708	0%	-2%	-14%
Cowpeas 1 kg	24,987	21,950	20,600	18,650	9,583	-9%	-15%	-25%
Unskilled Labor Wage Rate	84,046	85,000	94,000	94,000	48,702	0%	11%	12%
Firewood Bundle	34,300	35,000	32,000	33,000	17,033	3%	-6%	-4%
Local Sesame Oil 1 litre	90,900	91,000	82,500	82,200	42,576	0%	-10%	-10%
Exchange Rate (Somali Shilling per USD)	23,505	21,760	23,700	23,900	12,308	1%	10%	2%
<b>Terms of Trade</b>								
Labour Wage (Daily)/ Cereal (Rice(Kg))	4	5	6	5	-	-17%	0%	25%
Local Goat (Head)/ Cereal (Rice(Kg))	57	56	54	56	-	4%	0%	-2%
Camel (Head)/Cereal (Kg)	513	716	776	772	-	-1%	8%	50%
<b>Price Indices</b>								
Consumer Price Index	-	187	192	193	-	0%	3%	-

Figure 30: Trends in Cereal Prices

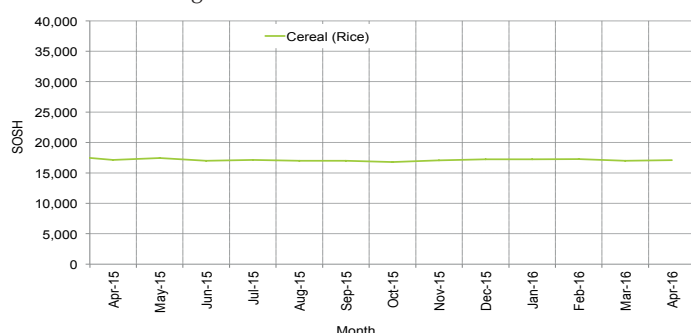


Figure 31: Trends in wage rates and relative purchasing power

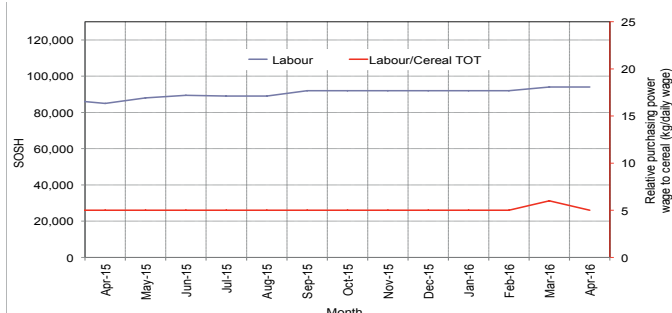


Figure 32: Imported Commodity Prices Compared to Exchange Rate

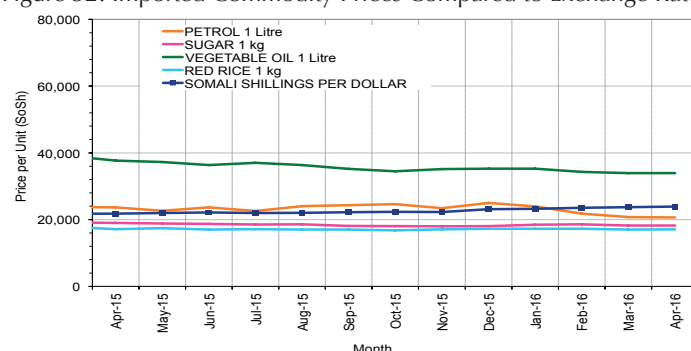


Figure 33: Goat Local Quality

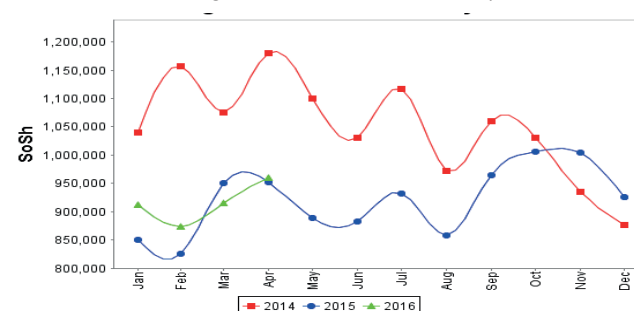


Figure 34: Exchange Rate

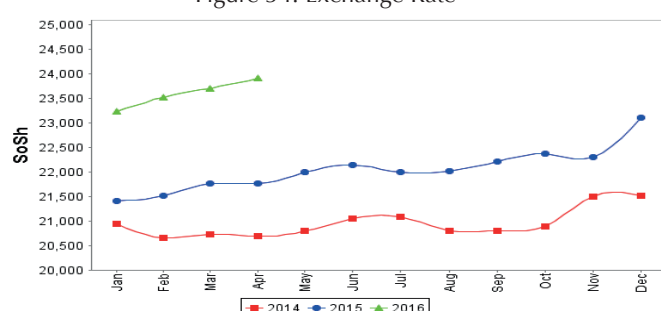
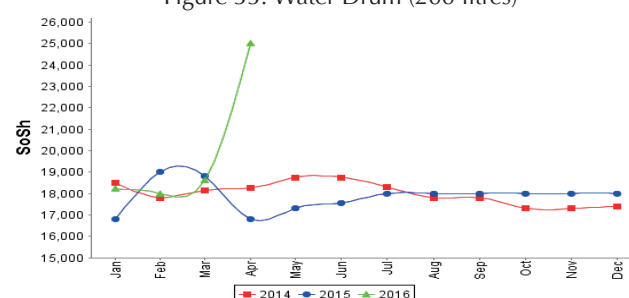


Figure 35: Water Drum (200 litres)



# Regional analysis: Northeast Regions

Indicator	5-Year Average (2011-2015)	Apr-15	Mar-16	Apr-16 Nominal Price	Apr-16 Real (Deflated) Price	% Change Previous Month	% Change Same Month Previous Year	% Change 5-year avrg (2011-2015)
<b>Imported Commodities Prices</b>								
Diesel 1 litre	24,651	16,125	13,000	12,938	5,176	0%	-20%	-48%
Imported Red Rice 1kg	18,150	14,875	14,750	14,781	5,927	0%	-1%	-19%
Petrol 1 litre	22,862	17,375	16,750	16,656	6,692	-1%	-4%	-27%
Sugar	22,250	16,375	15,938	16,813	6,756	5%	3%	-24%
Vegetable Oil 1 litre	40,445	30,875	29,875	31,000	12,541	4%	0%	-23%
Wheat Flour 1kg	17,052	14,250	14,063	14,031	5,622	0%	-2%	-18%
Wheat Grain 1kg	24,655	21,000	22,375	22,375	9,024	0%	7%	-9%
<b>Cereal Prices</b>								
Red Sorghum 1kg	22,535	22,125	24,375	25,125	10,145	3%	14%	11%
White Maize 1kg	19,700	19,000	22,000	24,250	9,789	10%	28%	23%
<b>Livestock &amp; Livestock Product Prices</b>								
Camel Local Quality (Head)	15,096,875	14,700,000	13,912,500	14,006,250	5,711,309	1%	-5%	-7%
Cattle Local Quality (Head)	7,835,000	8,500,000	8,500,000	8,750,000	3,567,938	3%	3%	12%
Fresh Camel Milk 1 litre	41,697	33,625	42,771	44,292	17,961	4%	32%	6%
Goat Export Quality (Head)	1,502,500	1,362,500	1,300,000	1,268,750	517,265	-2%	-7%	-16%
Goat Local Quality (Head)	1,408,075	1,282,500	1,163,750	1,180,625	481,330	1%	-8%	-16%
<b>Other Essential Items</b>								
Charcoal 50kg	365,837	378,750	376,875	375,625	153,071	0%	-1%	3%
Cowpeas 1 kg	35,136	27,500	32,500	32,000	12,949	-2%	16%	-9%
Unskilled Labor Wage Rate	121,800	130,000	128,125	126,875	51,637	-1%	-2%	4%
Firewood Bundle	43,722	52,188	48,750	47,500	19,269	-3%	-9%	9%
Local Sesame Oil 1 litre	92,962	93,750	93,750	100,000	40,678	7%	7%	8%
Exchange Rate (Somali Shilling per USD)	23,708	21,131	22,338	22,631	9,128	1%	7%	-5%
<b>Terms of Trade</b>								
Labour Wage (Daily)/ Cereal (Rice(Kg))	7	9	9	9	-	0%	0%	29%
Local Goat (Head)/ Cereal (Rice(Kg))	79	86	79	80	-	1%	-7%	1%
<b>Price Indices</b>								
Consumer Price Index	-	230	241	245	-	2%	7%	-

Figure 36: Trends in Cereal Prices

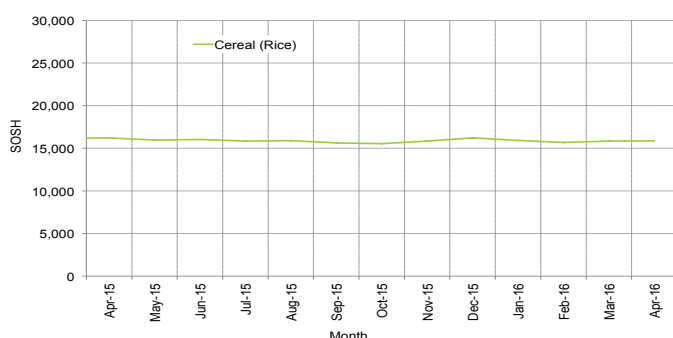


Figure 37: Trends in Wage Rates and Relative Purchasing Power

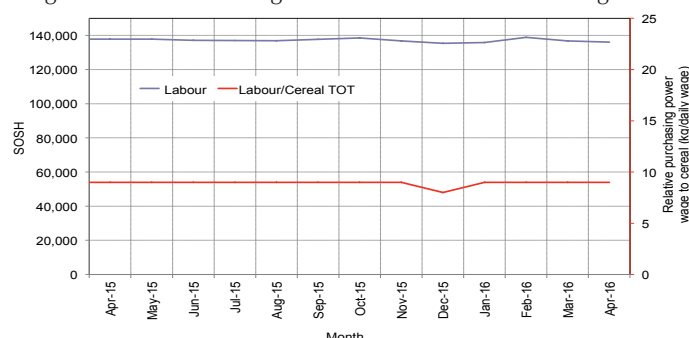


Figure 38: Imported Commodity Prices Compared to Exchange Rate

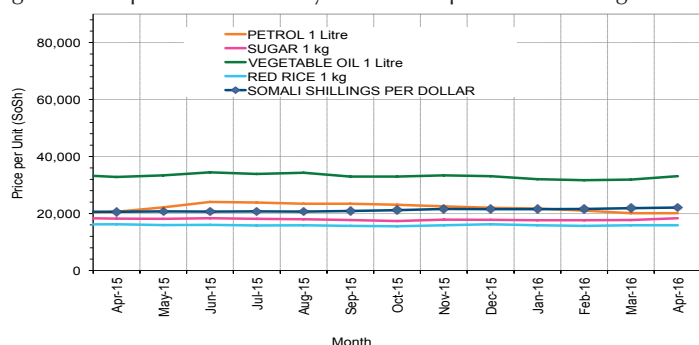


Figure 39: Goat Local Quality

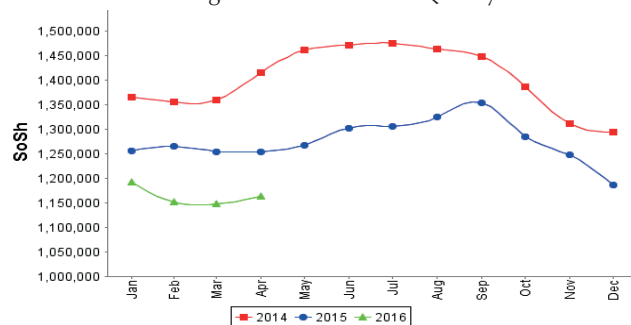


Figure 40: Exchange Rate

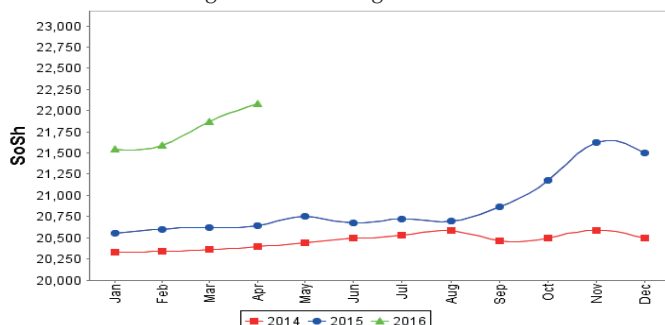
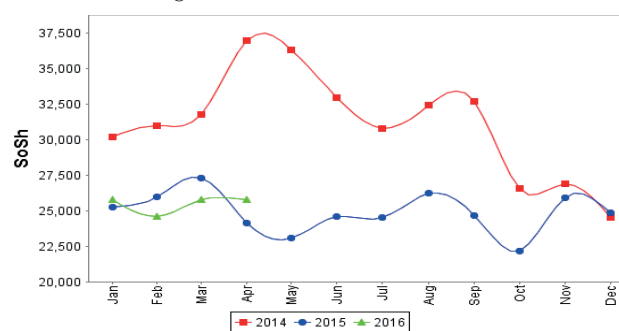


Figure 41: Water Drum (200 litres)





# Regional analysis: Northwest Regions

Indicator	5-Year Average (2011-2015)	Apr-15	Mar-16	Apr-16 Nominal Price	Apr-16 Real (Deflated) Price	% Change Previous Month	% Change Same Month Previous Year	% Change 5-year avrg (2011-2015)
<b>Imported Commodities Prices</b>								
Diesel 1 litre	6,609	6,770	4,900	4,850	3,569	-1%	-28%	-27%
Imported Red Rice 1kg	5,075	5,020	5,300	5,100	3,758	-4%	2%	0%
Petrol 1 litre	6,982	7,280	6,148	6,390	4,734	4%	-12%	-8%
Sugar	5,886	5,640	5,640	5,500	4,060	-2%	-2%	-7%
Vegetable Oil 1 litre	11,906	12,680	10,500	11,900	8,902	13%	-6%	0%
Wheat Flour 1kg	4,349	4,280	5,100	4,780	3,516	-6%	12%	10%
Wheat Grain 1kg	3,275	3,500	4,225	4,250	3,115	1%	21%	30%
<b>Cereal Prices</b>								
White Sorghum 1kg	3,474	3,560	3,750	4,050	2,964	8%	14%	17%
Yellow Maize 1kg	3,457	3,687	4,340	4,300	3,153	-1%	17%	24%
<b>Livestock &amp; Livestock Product Prices</b>								
Camel Local Quality (Head)	2,944,916	4,233,333	4,112,500	4,444,583	3,361,973	8%	5%	51%
Cattle Local Quality (Head)	1,941,275	2,233,333	1,817,500	2,405,833	1,819,775	32%	8%	24%
Fresh Camel Milk 1 litre	5,907	6,275	8,700	8,810	6,564	1%	40%	49%
Goat Export Quality (Head)	423,685	434,225	398,813	386,438	292,218	-3%	-11%	-9%
Goat Local Quality (Head)	313,635	317,750	284,850	293,700	222,067	3%	-8%	-6%
<b>Other Essential Items</b>								
Charcoal 50kg	42,145	52,800	61,550	63,750	48,123	4%	21%	51%
Cowpeas 1 kg	10,102	11,750	13,500	13,375	10,017	-1%	14%	32%
Unskilled Labor Wage Rate	41,970	51,200	57,650	60,500	45,665	5%	18%	44%
Firewood Bundle	3,361	3,833	4,667	5,000	3,682	7%	30%	49%
Local Sesame Oil 1 litre	28,244	32,000	32,000	32,125	24,201	0%	0%	14%
Exchange Rate (Somaliland Shilling per USD)	6,695	7,140	7,275	7,290	5,414	0%	2%	9%
<b>Terms of Trade</b>								
Labour Wage (Daily)/ Cereal (Rice(Kg))	8	10	11	12	-	9%	20%	50%
Local Goat (Head)/ Cereal (Rice(Kg))	61	63	54	58	-	7%	-8%	-5%
<b>Price Indices</b>								
Consumer Price Index	-	122	131	132	-	1%	9%	-

Figure 42: Trends in Cereal Prices

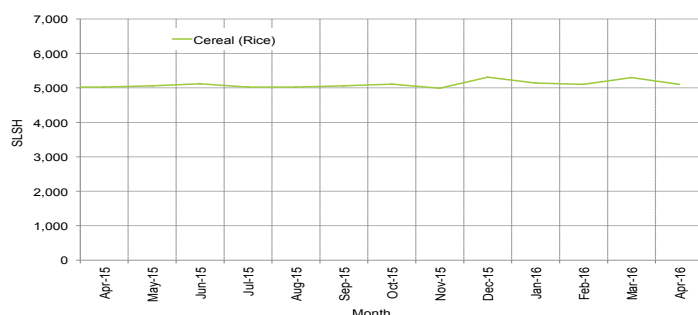


Figure 43: Trends in Wage Rates and Relative Purchasing Power

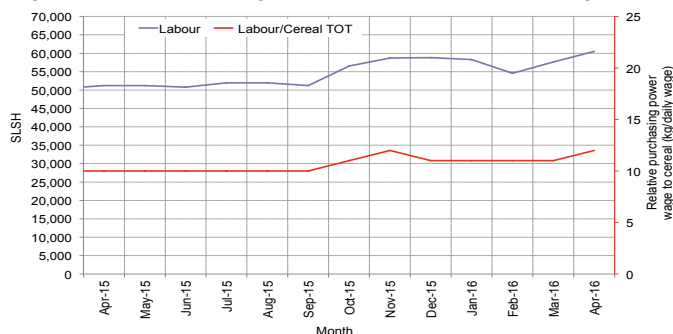


Figure 44: Imported Commodity Prices Compared to Exchange Rate

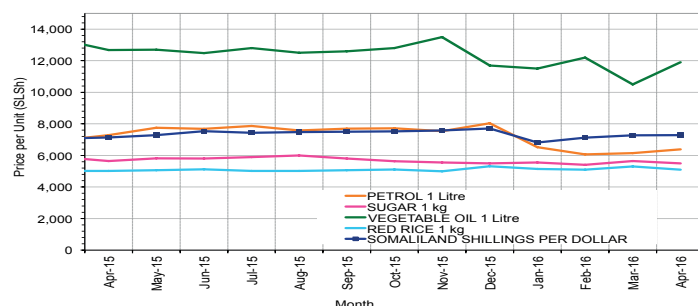


Figure 45: Goat Local Quality

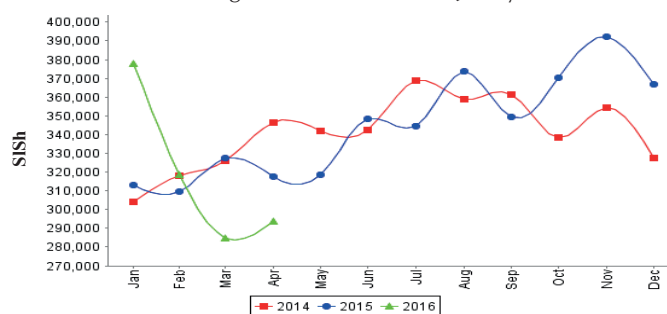


Figure 46: Exchange Rate

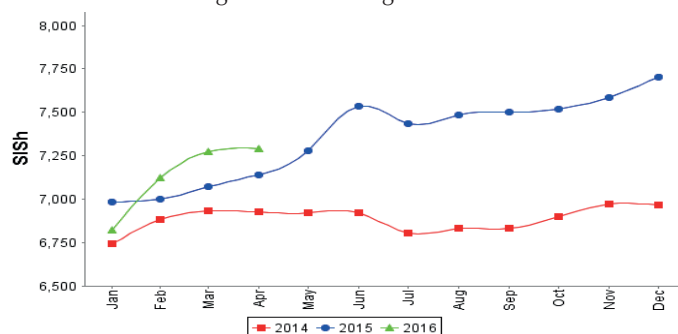
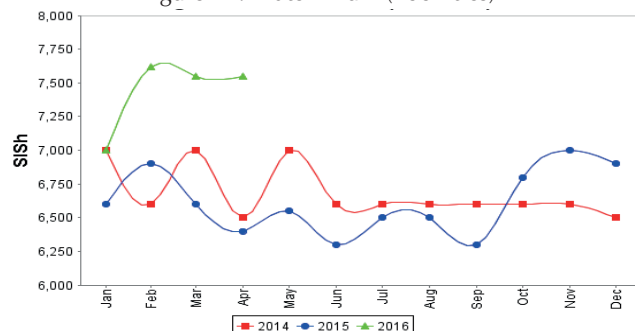


Figure 47: Water Drum (200 litres)



# Trends in Livestock Exports

Table 1: Berbera Livestock Exports (Number of Heads)

	1999	2000	2001	2002	2003	2004	2005	2006	2007	2008	2009	2010	2011	2012	2013	2014	2015	Jan-Mar 2016
Shoats	2 048 136	1 601 083	51 546	341 711	563 107	859 404	1 023 795	1 017 242	1 350 054	1 219 519	1 556 003	2 584 810	3 104 684	3 219 584	2 888 955	3 089 592	3 270 386	448 389
Cattle	89 967	63 263	20 973	37 547	84 312	131 852	148 151	85 631	88 143	80 051	88 005	133 021	150 934	190 354	20 875	252 597	160,395	36 542
Camel	37 430	16 984	3 473	18,864	21 874	5 147	5 069	22 810	14 245	26 515	20 206	92 651	107 281	102 664	75 728	64 578	61 475	37 836

Figure 48: Berbera Livestock Exports (Number of Heads)

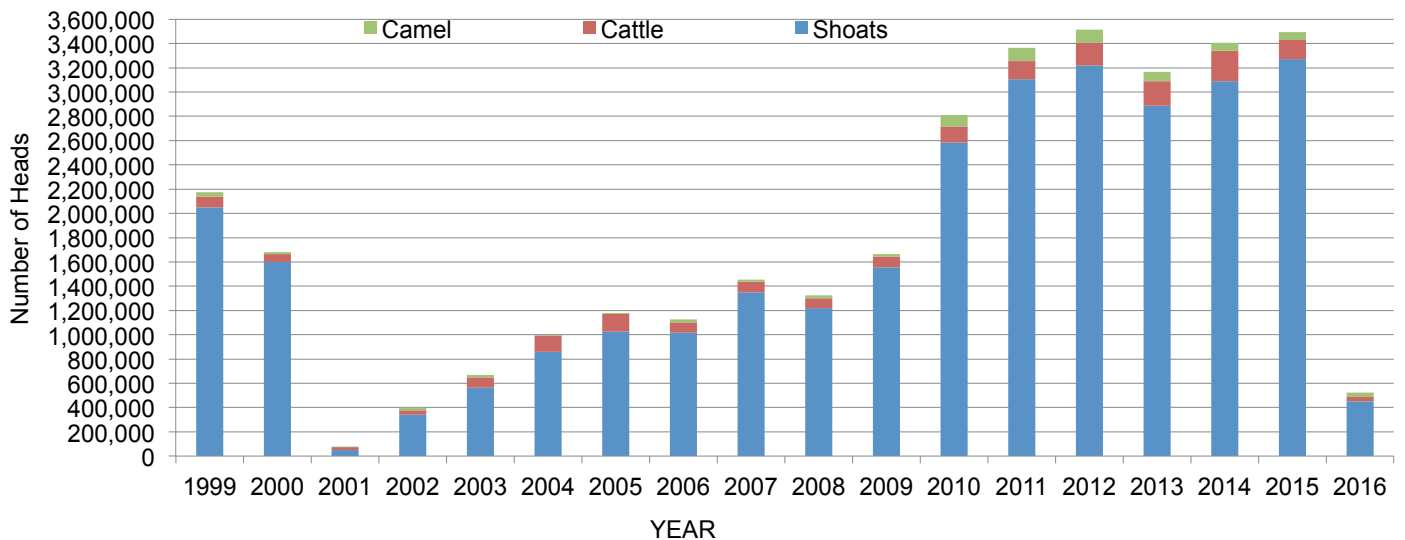
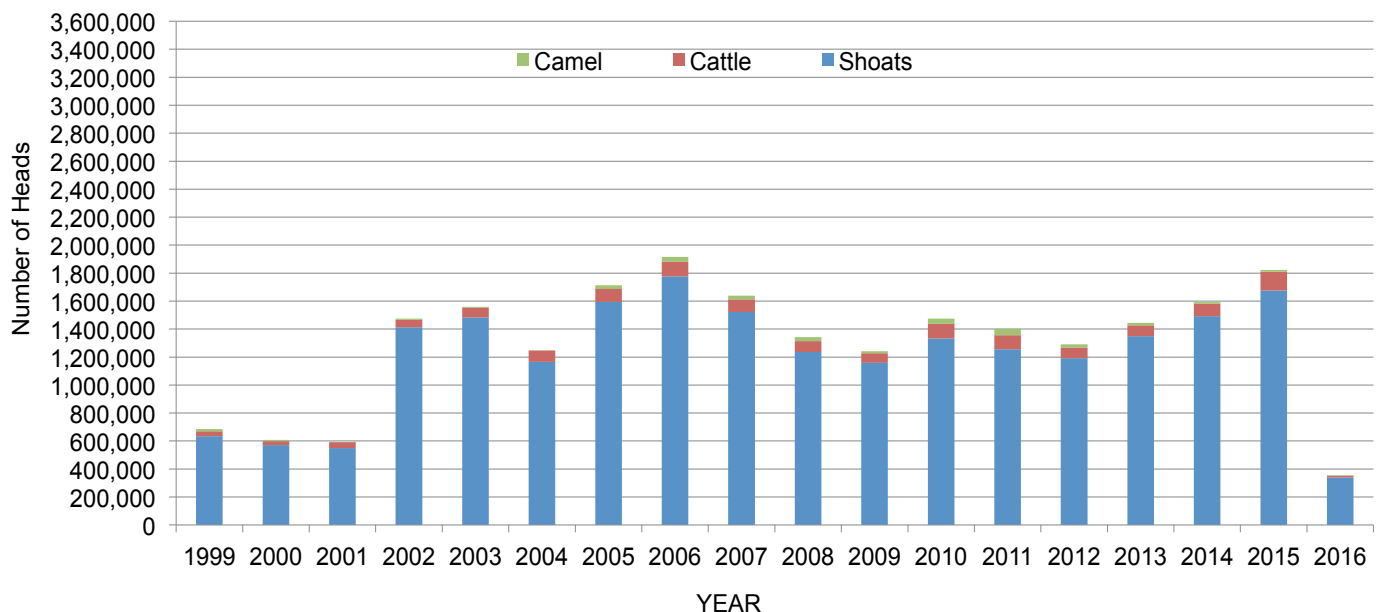


Table 2: Bossaso Livestock Exports (Number of Heads)

	1999	2000	2001	2002	2003	2004	2005	2006	2007	2008	2009	2010	2011	2012	2013	2014	2015	Jan-Mar 2016
Shoats	633 669	571 455	548 853	1 412 450	1 483 409	1 166 480	1 594 859	1 777 283	1 522 855	1 236 775	1 159 454	1 333 478	1 256 535	1 192 197	1 349 123	1 493 111	1 676 216	339 070
Cattle	36 586	27 604	42 248	53 313	71 328	79 994	91 910	104 595	89 190	78 046	67 385	103 808	99 058	76 043	77 353	87 759	134 597	13 187
Camel	15 544	8 177	1 950	9 720	4 259	2 488	26 109	33 724	27 580	27 639	15 331	36 865	45 878	22 288	19 032	12 251	10 945	3 483

Figure 49: Bossaso Livestock Exports (Number of Heads)

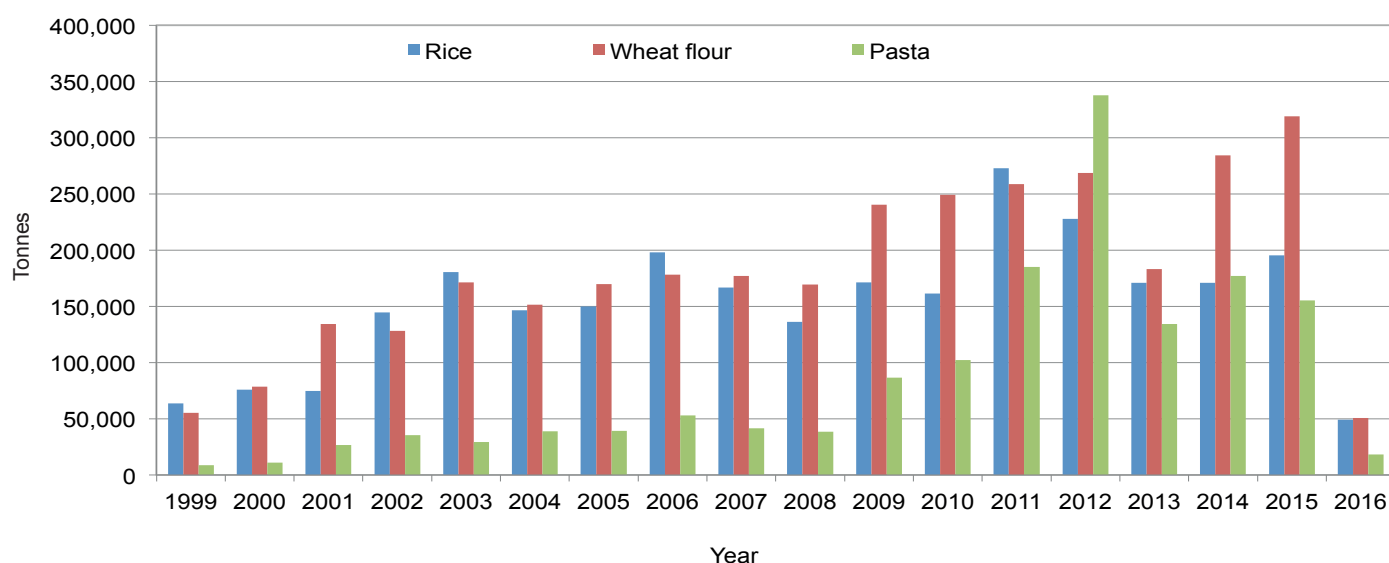


# Trends in Cereal Imports

Table 3: Total Cereal Imports through Berbera, Bossaso and Mogadishu Ports (Tonnes) \*

	1999	2000	2001	2002	2003	2004	2005	2006	2007	2008	2009	2010	2011	2012	2013	2014	2015	Jan-Mar 2016
Rice	63 464	75 687	74 729	144 600	180 614	146 567	150 017	198 101	166 626	136 007	171 472	161 415	272 877	227 955	170 868	170,888	195,240	49 168
Wheat flour	55 176	78 555	134 425	128 263	171 442	151 555	169 583	178 345	176 821	169 208	240 247	249 080	258 679	268,491	183 058	284 230	318,868	50 770
Pasta	8 544	11 071	26 702	35 425	29 273	38,749	39 153	52 815	41 331	38 441	86 372	102 373	184,849	337 878	134 311	176,951	155 360	18 383

Figure 50: Total Cereal Imports (Berbera, Bossaso and Mogadishu)



\* Bossaso and Berbera data is up to March 2016. Elman (Mogadishu) is up to November 2015. Mogadishu data (Elmaan Port) for 2013 includes only January - March imports.