

Market DataUpdate



Food Security and Nutrition
Analysis Unit - Somalia



April Data 2015 (Issued May 19, 2015)

Highlights

Inflation:

SoSh (Somali shilling)-using areas: Consumer Price Index (CPI) exhibited relative stability/ mild declines (1%) in the month of April in SoSh-using areas. CPI changed by 1-5 percent compared to a year ago (April 2014) in Northeast and South, while it declined significantly (17%) in Central as a result of cereal price declines.

SISh (Somaliland shilling)-using areas: CPI decreased mildly (2%) month-on-month and decreased by six percent year-on-year due to declines in cereal prices.

Exchange rate:

SoSh-using areas: The exchange rates between SoSh and the United States Dollar (USD) indicated relative stability or marginal monthly changes (1-2%) in April. The SoSh depreciated compared to a year ago across all areas, most significantly (12%) in Banadir.

SISh-using areas: The exchange rates between SISh and the USD increased mildly (1-3%) both month-on-month and year-on year.

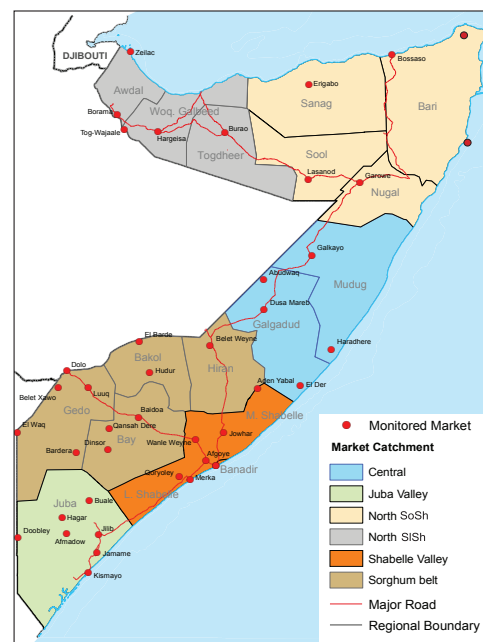
Local grain prices remained relatively stable or changed (increased/decreased) by less than 10 percent in April in most regions of the country month-on-month. Compared to a year ago, cereal prices exhibited mixed trends. Significant price changes were recorded in some regions of South-Central - increased in Bay, Middle Juba and Banadir (19-34%) and decreased in Central and Bakool (21-22%); in the rest of the regions prices remained relatively stable or changed at mild to moderate rates.

Prices of imported food (rice, sugar, vegetable oil, wheat flour) either remained relatively stable month-on-month or changed mildly in local currency terms for most commodities and in most regions of the country. The exceptions are Middle Juba and Bakool where the prices increased at moderate to high levels due to increased transport costs as a result of worsened road conditions and deteriorated security situation. Annual price comparison also indicates relative stability or mild (less than 10%) price changes (increase/ decrease) for most food imports throughout the country.

Livestock prices (for all species) showed mild monthly changes in April in most regions of the country. However, prices increased at moderate to high (11-39%) rates in Middle Juba due to increased demand from local market as a result of improved pasture and water availability. Prices of milk (cattle and camel) remained relatively stable or changed at mild to moderate rates in most regions; significant monthly surge (20%) in milk prices was recorded in Shabelle region due to low milk supply in the market. Annual comparison indicates reduced values for most livestock species in most markets in April. Milk prices declined annually in most parts of the country; exceptions are Middle Shabelle and Northern regions where fresh cattle milk price increased at moderate to high levels due to lower cattle milk supply compared to a year ago.

Labor (unskilled) wages remained relatively stable or changed at mild rates month-on-month in most regions of the country. Annual comparison also indicates mild changes in labor wage rates in most markets. However, significant (35%) annual decline was recorded in Bakool, particularly in El-Berde due to reduced economic/trade activities compared to a year ago. This is due to ongoing siege in Bakool region (Wajid and Hudur, which indirectly affected El-Berde district cutting off primary supply routes (Bay and Banadir).

Terms of Trade (ToT) between daily labor wage and local cereals as well as between local quality goat and cereals changed at mild to moderate rates month-on-month in most regions of the country. ToTs fell annually in most regions.



This Market Data Update is a monthly report that presents analysis of market information and is produced regularly as part of the monthly monitoring process.

The weekly price data is collected from 48 main markets and 51 rural markets throughout Somalia since 1995.

Market analysis is an integral part of all of FSNAU's annual food security projections and seasonal technical reports (Technical Reports on FSNAU Post Gu and Post Deyr Analysis).

Detailed market data are available online on www.fsnau.org/ids.

Siege-affected towns (Bulo-Burte, Wajid and Hudur)

Labour (unskilled) wages increased month-on-month mildly in Bulo-Burte (5%) and moderately in Hudur (11%). The lowest labor wage among the monitored markets of the country was recorded in Wajid market. Wage rates increased significantly year-on-year in Hudur (44%).

Terms of Trade (ToT) between daily labor wage and local cereals as well as between local quality goat and cereals remained relatively stable or increased mildly month-on-month in Hudur (by 7kg for cereals/goat) and Bulo-Burte (by 3kg for cereals/daily labor wage). Notably, Wajid market has the lowest ToT between daily labor wage and local cereals (2kg/daily labor wage) in the country. Compared to a year ago, the ToTs have increased in Hudur (by 3kg and 14kg respectively) due to decrease in cereal prices and/or increased labor wages and goat prices.

Local grains prices increased from mild to moderate (3-13%) levels in April month-on-month in Bulo-Burte and Hudur markets

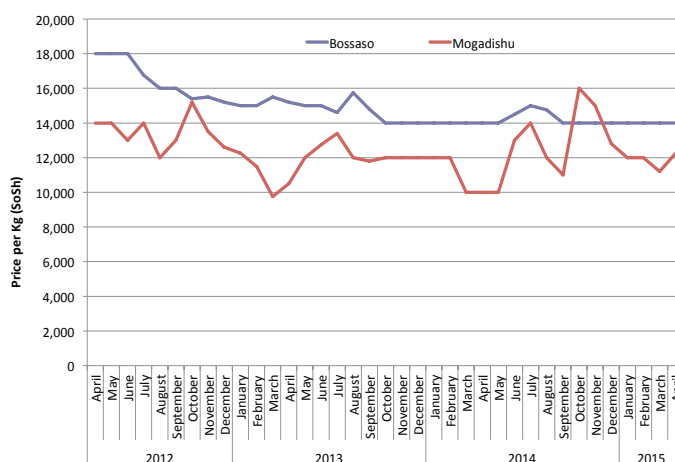
Prices of imported food items (rice, sugar, vegetable oil, wheat flour): prices for most food imports increased in Hudur in April month-on-month while they moderately declined in Bulo-Burte.

National Trends: CPI, Exchange Rates, Cereal Prices and Relative Purchasing Power

Table 1: ToT between Cereals (kg) and Daily Labour Wage Rate, by Region

Regions	Apr 2015 (Kg)	%change from		
		Mar 2015	Apr 2014	April Average (2010-2014)
Banadir/Mogadishu	13	-7%	-46%	-10%
Bay	16	-6%	-20%	3%
Bakool	4	0%	-20%	-39%
Gedo	18	6%	13%	25%
Juba	9	0%	-10%	-4%
Shabelle	8	0%	0%	-7%
Northwest	10	0%	0%	35%
Northeast	9	0%	13%	50%
Central	5	0%	25%	25%

Figure 1: Wheat Prices: Mogadishu and Bossaso Markets



Source: FSNAU Manifest Price Monitoring System

Figure 2: Terms of Trade Between Wage Rates and Selected Cereals

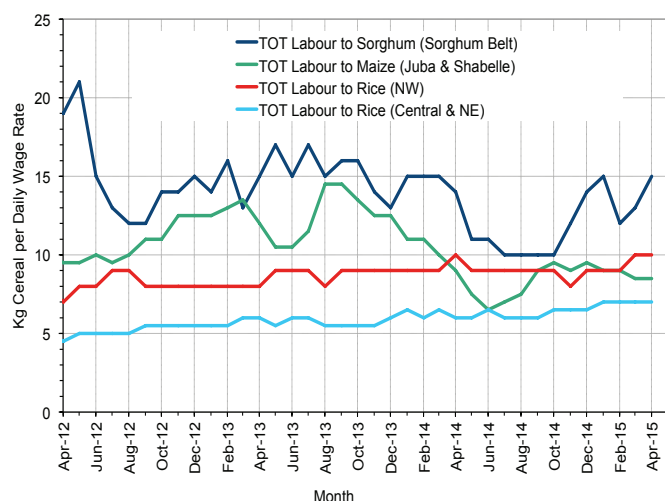


Figure 3: Monthly Exchange Rate for Selected Regions (SoSh and SSh to USD)

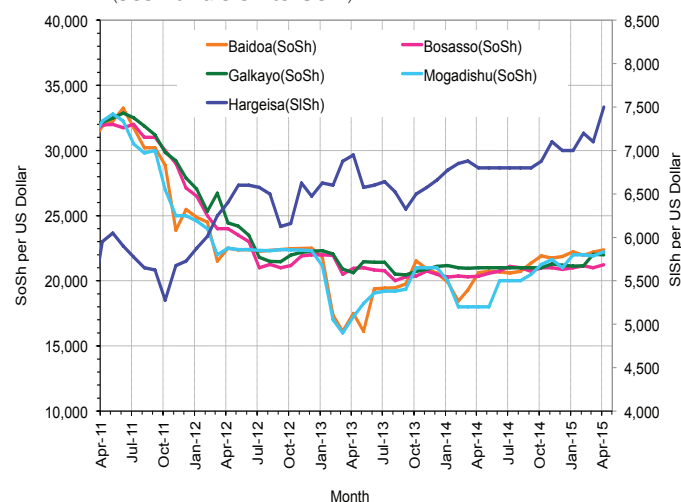


Figure 4: Monthly Trends in Consumer Price Index (CPI, March 2007=100)

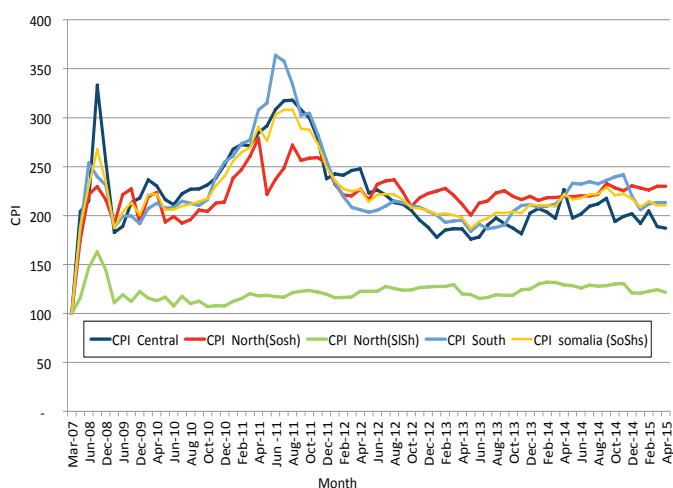
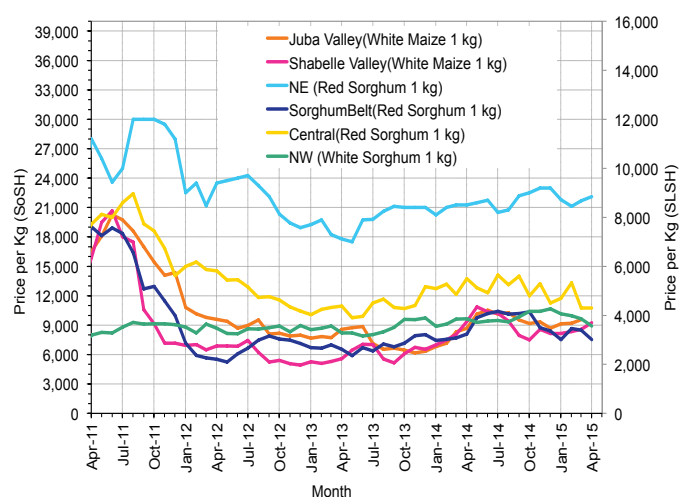


Figure 5: Monthly Trends in Local Cereal Prices



Regional analysis: Juba Regions

Indicator	5-Year Average (2010-2014)	Apr-14	Mar-15	Apr-15 Nominal Price	Apr-15 Real (Deflated) Price	% Change Previous Month	% Change Same Month Previous Year	% Change 5-year avrg (2010-2014)
Imported Commodities Prices								
Diesel 1 litre	29,587	26,429	23,429	24,857	11,553	6%	-6%	-16%
Imported Red Rice 1kg	18,618	15,286	15,214	16,000	7,401	5%	5%	-14%
Petrol 1 litre	30,881	27,607	25,200	28,000	13,026	11%	1%	-9%
Sugar	22,964	15,821	15,786	16,893	7,819	7%	7%	-26%
Vegetable Oil 1 litre	42,099	32,143	30,357	30,000	13,964	-1%	-7%	-29%
Wheat Flour 1kg	17,645	15,000	15,214	15,857	7,334	4%	6%	-10%
Wheat Grain 1kg	15,000	-	-	-	-	-	-	-
Cereal Prices								
Red Sorghum 1kg	10,000	10,000	8,000	7,500	3,416	-6%	-25%	-25%
White Maize 1kg	10,442	8,896	9,636	9,761	4,476	1%	10%	-7%
Livestock & Livestock Product Prices								
Camel Local Quality (Head)	9,187,323	10,262,583	7,519,286	8,587,214	4,025,615	14%	-16%	-7%
Cattle Local Quality (Head)	3,564,494	4,393,700	3,577,143	3,843,214	1,801,612	7%	-13%	8%
Fresh Camel Milk 1 litre	21,895	24,458	19,343	18,917	8,768	-2%	-23%	-14%
Goat Export Quality (Head)	1,369,662	1,581,857	1,183,929	1,302,857	610,684	10%	-18%	-5%
Goat Local Quality (Head)	854,406	964,536	797,857	858,679	402,452	8%	-11%	1%
Other Essential Items								
Charcoal 50kg	85,660	89,643	83,393	80,536	37,656	-3%	-10%	-6%
Cowpeas 1 kg	24,821	19,929	27,907	26,714	12,424	-4%	34%	8%
Unskilled Labor Wage Rate	89,804	90,571	87,071	86,750	40,569	0%	-4%	-3%
Firewood Bundle	7,975	11,000	6,286	6,857	3,115	9%	-38%	-14%
Local Sesame Oil 1 litre	74,280	82,929	73,286	74,500	34,826	2%	-10%	0%
Exchange Rate (Somali Shilling per USD)	24,564	20,639	22,150	22,207	10,311	0%	8%	-10%
Terms of Trade								
Labour Wage (Daily)/ Cereal (Maize(Kg))	9	10	9	9	-	0%	-10%	0%
Local Goat (Head)/ Cereal (Maize(Kg))	90	108	83	88	-	6%	-19%	-2%
Price Indices								
Consumer Price Index	-	220	213	213	-	0%	-3%	-

Figure 6: Trends in Cereal Prices

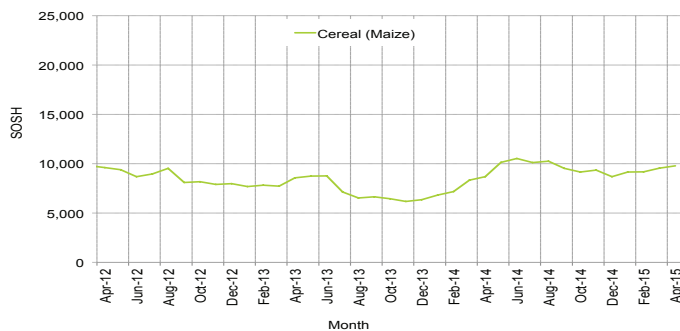


Figure 7: Trends in Wage Rates and Relative Purchasing Power

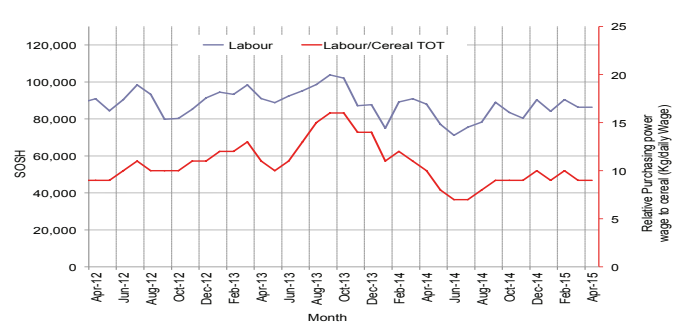


Figure 8: Imported Commodity Prices Compared to Exchange Rate

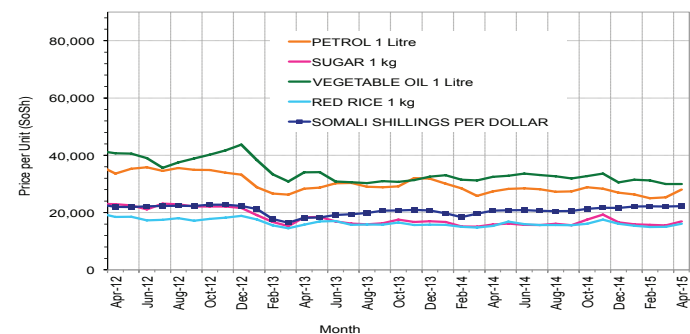


Figure 9: Goat Local Quality

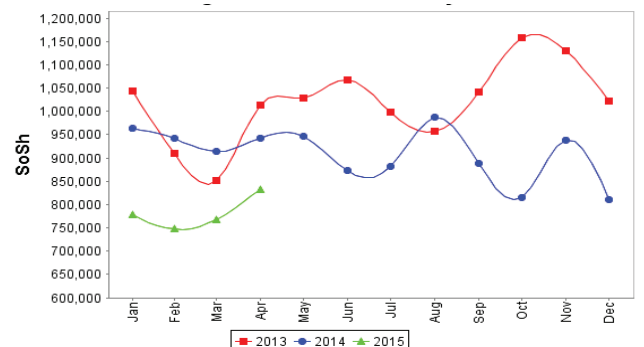


Figure 10: Exchange Rate

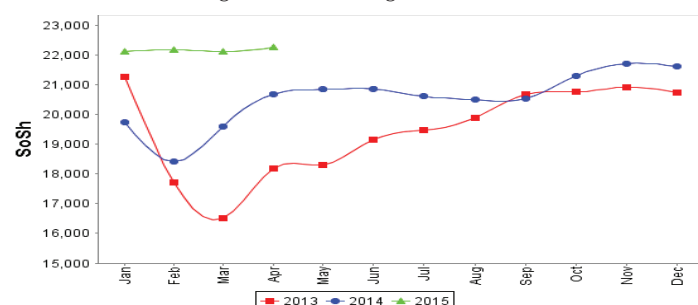
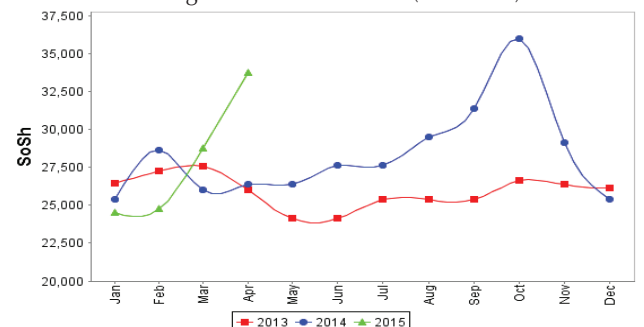


Figure 11: Water Drum (200 litres)



Regional analysis: Sorghum Belt Regions (Bay, Bakool, Gedo and Hiran)

Indicator	5-Year Average (2010-2014)	Apr-14	Mar-15	Apr-15 Nominal Price	Apr-15 Real (Deflated) Price	% Change Previous Month	% Change Same Month Previous Year	% Change 5-year avrg (2010-2014)
Imported Commodities Prices								
Diesel 1 litre	32,576	30,068	29,268	30,521	14,208	4%	2%	-6%
Imported Red Rice 1kg	21,430	17,659	17,691	19,167	8,886	8%	9%	-11%
Petrol 1 litre	32,424	30,682	30,273	31,250	14,550	3%	2%	-4%
Sugar	24,493	18,750	18,214	19,688	9,130	8%	5%	-20%
Vegetable Oil 1 litre	45,962	40,909	38,018	37,896	17,666	0%	-7%	-18%
Wheat Flour 1kg	18,908	17,364	17,455	18,792	8,710	8%	8%	-1%
Wheat Grain 1kg	11,665	12,663	21,133	22,000	10,214	4%	74%	89%
Cereal Prices								
Red Sorghum 1kg	9,397	8,093	8,486	7,525	3,428	-11%	-7%	-20%
White Maize 1kg	10,738	10,525	9,615	9,723	4,458	1%	-8%	-9%
Livestock & Livestock Product Prices								
Camel Local Quality (Head)	10,682,070	13,461,111	11,830,000	12,430,833	5,827,516	5%	-8%	16%
Cattle Local Quality (Head)	3,233,187	4,435,313	3,405,714	3,718,750	1,743,262	9%	-16%	15%
Fresh Camel Milk 1 litre	21,358	22,932	20,460	18,159	8,413	-11%	-21%	-15%
Goat Export Quality (Head)	1,420,126	1,647,500	1,502,750	1,567,292	734,652	4%	-5%	10%
Goat Local Quality (Head)	896,090	973,591	886,318	917,292	429,930	3%	-6%	2%
Other Essential Items								
Charcoal 50kg	141,372	147,136	164,800	175,455	82,154	6%	19%	24%
Cowpeas 1 kg	25,536	23,740	27,650	28,271	13,154	2%	19%	11%
Unskilled Labor Wage Rate	97,195	113,409	114,114	110,854	51,869	-3%	-2%	14%
Firewood Bundle	6,000	6,727	6,700	6,750	3,064	1%	0%	13%
Local Sesame Oil 1 litre	74,729	80,833	79,964	78,281	36,598	-2%	-3%	5%
Exchange Rate (Somali Shilling per USD)	24,786	20,283	21,940	22,152	10,285	1%	9%	-11%
Terms of Trade								
Labour Wage (Daily)/ Cereal (Sorghum(Kg))	12	14	13	15	-	15%	7%	25%
Local Goat (Head)/ Cereal (Sorghum(Kg))	123	120	104	123	-	18%	2%	0%
Price Indices								
Consumer Price Index	-	220	213	213	-	0%	-3%	-

Figure 12: Trends in Cereal Prices

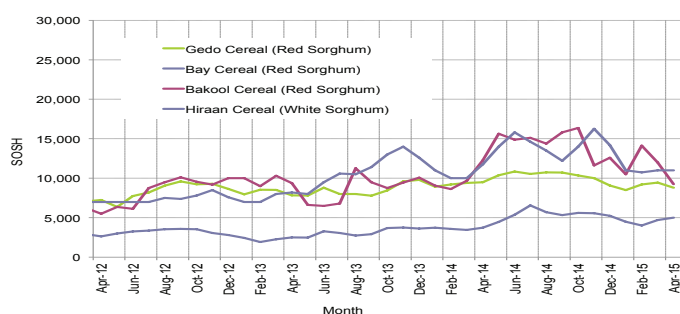


Figure 13: Trends in Wage Rates and Relative Purchasing Power

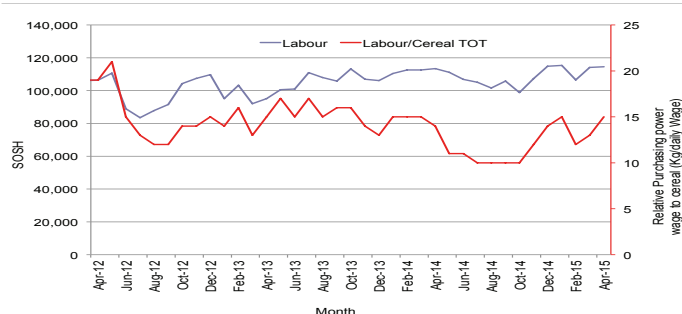


Figure 14: Imported Commodity Prices Compared to Exchange Rate

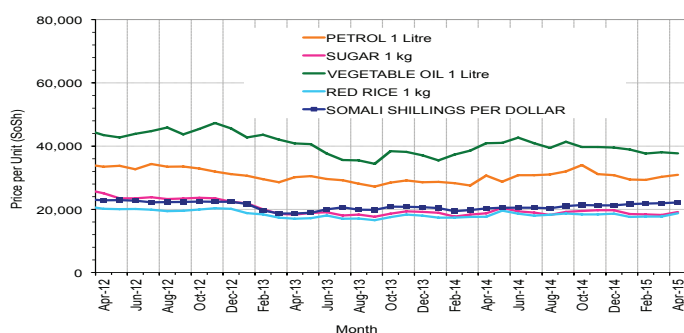


Figure 15: Goat Local Quality

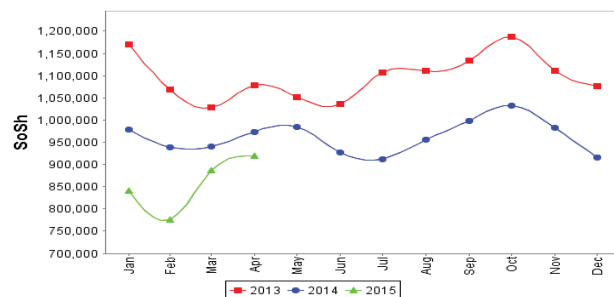


Figure 16: Exchange Rate

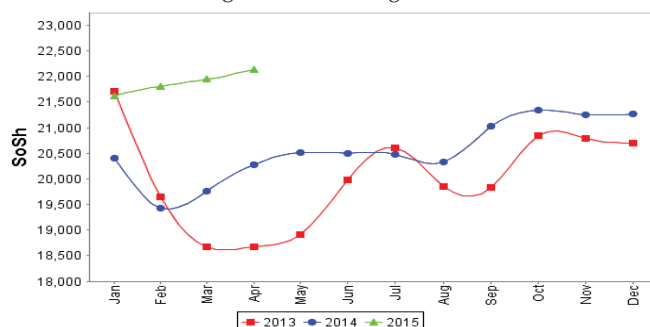
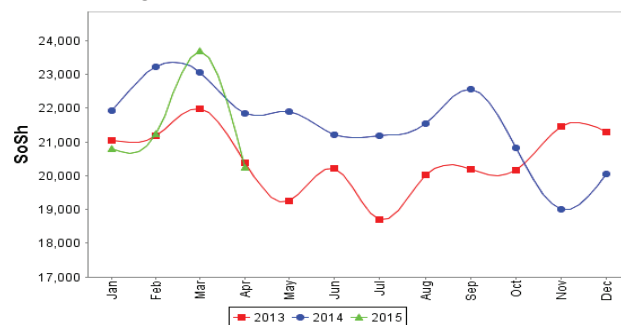


Figure 17: Water Drum (200 litres)



Regional analysis: Shabelle Regions

Indicator	5-Year Average (2010-2014)	Apr-14	Mar-15	Apr-15 Nominal Price	Apr-15 Real (Deflated) Price	% Change Previous Month	% Change Same Month Previous Year	% Change 5-year avrg (2010-2014)
Imported Commodities Prices								
Diesel 1 litre	29,433	28,000	22,667	22,958	10,663	1%	-18%	-22%
Imported Red Rice 1kg	17,885	15,792	15,417	15,708	7,264	2%	-1%	-12%
Petrol 1 litre	29,868	29,050	26,667	26,833	12,479	1%	-8%	-10%
Sugar	21,866	16,333	15,833	16,250	7,518	3%	-1%	-26%
Vegetable Oil 1 litre	35,038	29,833	28,417	29,292	13,632	3%	-2%	-16%
Wheat Flour 1kg	16,408	16,000	14,917	15,500	7,166	4%	-3%	-6%
Wheat Grain 1kg	13,127	26,000	22,500	27,000	12,558	20%	4%	106%
Cereal Prices								
Red Sorghum 1kg	10,898	9,851	10,613	10,833	4,979	2%	10%	-1%
White Maize 1kg	9,374	9,353	8,575	9,252	4,237	8%	-1%	-1%
Livestock & Livestock Product Prices								
Camel Local Quality (Head)	14,948,000	20,287,500	16,230,000	16,740,000	7,847,668	3%	-17%	12%
Cattle Local Quality (Head)	4,756,000	7,200,000	5,255,000	5,700,000	2,672,079	8%	-21%	20%
Fresh Camel Milk 1 litre	20,681	24,333	21,492	25,833	12,011	20%	6%	25%
Goat Export Quality (Head)	1,670,400	1,975,000	1,791,250	1,806,875	846,969	1%	-9%	8%
Goat Local Quality (Head)	1,176,100	1,464,500	1,341,250	1,384,583	648,997	3%	-5%	18%
Other Essential Items								
Charcoal 50kg	122,465	125,750	121,375	128,250	60,024	6%	2%	5%
Cowpeas 1 kg	22,266	16,554	22,378	22,190	10,303	-1%	34%	0%
Unskilled Labor Wage Rate	68,491	73,332	65,625	74,375	34,767	13%	1%	9%
Firewood Bundle	5,416	6,000	6,375	6,875	3,123	8%	15%	27%
Local Sesame Oil 1 litre	57,770	69,850	61,667	56,667	26,466	-8%	-19%	-2%
Exchange Rate (Somali Shilling per USD)	24,673	20,350	21,902	22,047	10,236	1%	8%	-11%
Terms of Trade								
Labour Wage (Daily)/ Cereal (Maize(Kg))	8	8	8	8	-	0%	0%	0%
Local Goat (Head)/ Cereal (Maize(Kg))	148	157	156	150	-	-4%	-4%	1%
Price Indices								
Consumer Price Index	-	220	213	213	-	0%	-3%	-

Figure 18: Trends in Cereal Prices

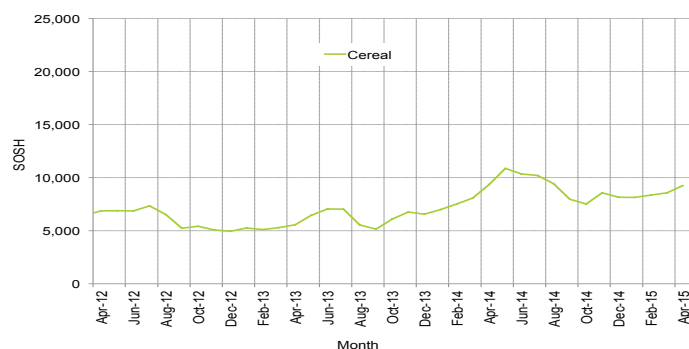


Figure 19: Trends in Wage Rates and Relative Purchasing Power

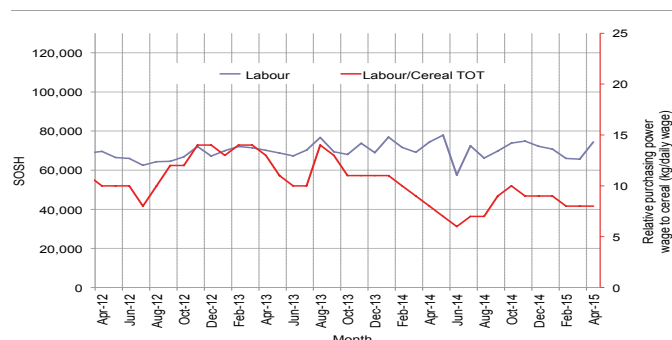


Figure 20: Imported Commodity Prices Compared to Exchange Rate

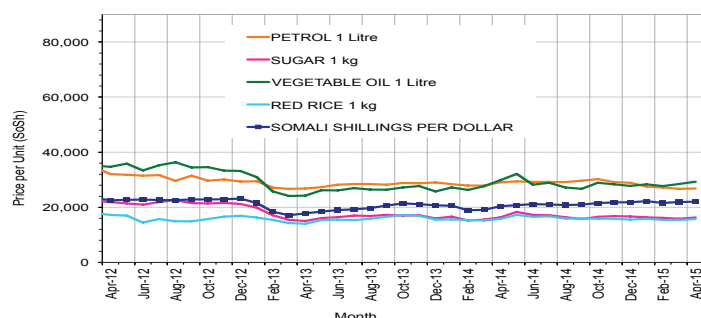


Figure 21: Goat Local Quality

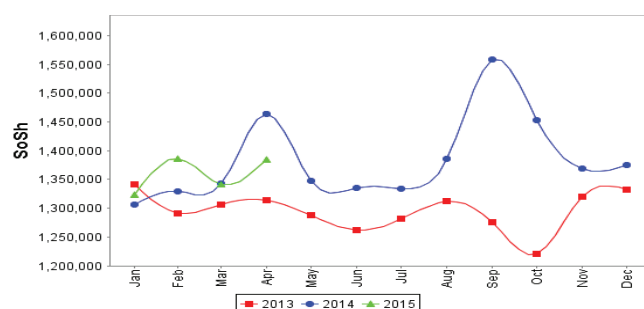


Figure 22: Exchange Rate

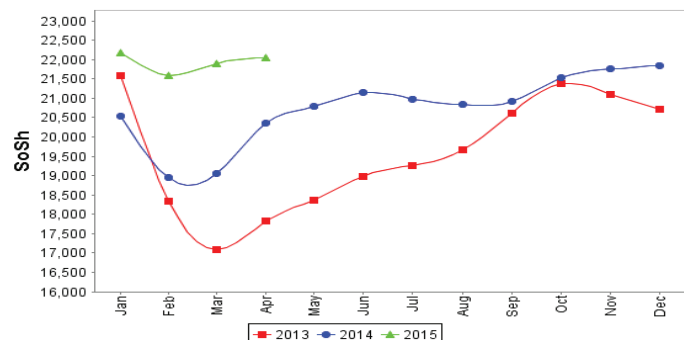
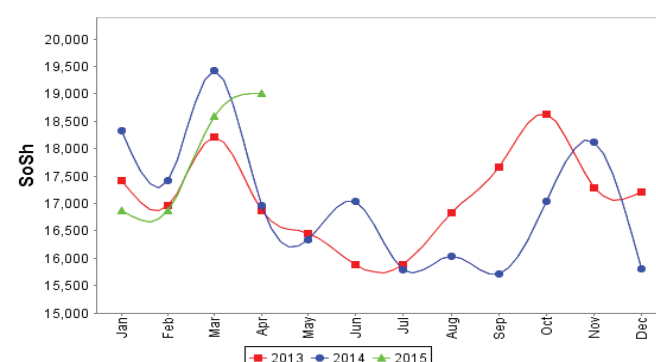


Figure 23: Water Drum (200 litres)



Regional analysis: Banadir Region

Indicator	5-Year Average (2010-2014)	Apr-14	Mar-15	Apr-15 Nominal Price	Apr-15 Real (Deflated) Price	% Change Previous Month	% Change Same Month Previous Year	% Change 5-year avg (2010-2014)
Imported Commodities Prices								
Diesel 1 litre	24,472	20,458	18,896	19,125	8,866	1%	-7%	-22%
Imported Red Rice 1kg	17,236	12,896	12,500	12,667	5,838	1%	-2%	-27%
Petrol 1 litre	24,754	21,125	20,667	20,583	9,549	0%	-3%	-17%
Sugar	20,112	14,271	13,917	13,917	6,424	0%	-2%	-31%
Vegetable Oil 1 litre	33,139	23,896	23,013	23,125	10,741	0%	-3%	-30%
Wheat Flour 1kg	13,923	12,033	12,242	12,333	5,682	1%	2%	-11%
Wheat Grain 1kg	10,418	7,542	10,750	12,333	5,682	15%	64%	18%
Cereal Prices								
Red Sorghum 1kg	9,020	7,388	8,575	8,596	3,930	0%	16%	-5%
White Maize 1kg	9,819	8,508	10,029	10,104	4,637	1%	19%	3%
Livestock & Livestock Product Prices								
Camel Local Quality (Head)	15,250,000	-	-	-	-	-	-	-
Cattle Local Quality (Head)	3,650,000	-	-	-	-	-	-	-
Fresh Camel Milk 1 litre	18,860	21,167	22,575	22,125	10,272	-2%	5%	17%
Goat Export Quality (Head)	2,047,500	3,000,000	1,960,000	2,000,000	937,507	2%	-33%	-2%
Goat Local Quality (Head)	1,785,875	2,468,750	1,775,000	1,731,250	811,516	-2%	-30%	-3%
Other Essential Items								
Charcoal 50kg	169,362	191,625	187,208	193,792	90,750	4%	1%	14%
Cowpeas 1 kg	19,589	14,908	21,825	21,750	10,096	0%	46%	11%
Unskilled Labor Wage Rate	87,883	108,125	105,000	100,833	47,171	-4%	-7%	15%
Firewood Bundle	6,391	8,100	7,400	8,000	3,650	8%	-1%	25%
Local Sesame Oil 1 litre	61,668	69,000	64,625	63,042	29,454	-2%	-9%	2%
Exchange Rate (Somali Shilling per USD)	24,312	19,875	22,033	22,317	10,362	1%	12%	-8%
Terms of Trade								
Labour Wage (Daily)/ Cereal (Maize(Kg))	10	13	10	10	-	0%	-23%	0%
Local Goat (Head)/ Cereal (Maize(Kg))	211	290	177	171	-	-3%	-41%	-19%
Price Indices								
Consumer Price Index	-	220	213	213	-	0%	-3%	-

Figure 24: Trends in Cereal Prices

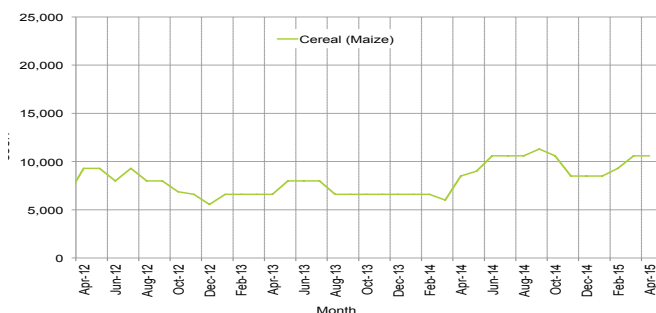


Figure 25: Bakara: Trends in Wage Rates and Relative Purchasing Power

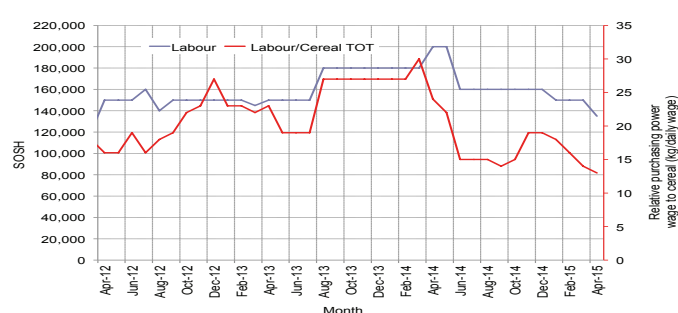


Figure 26: Imported Commodity Prices Compared to Exchange Rate

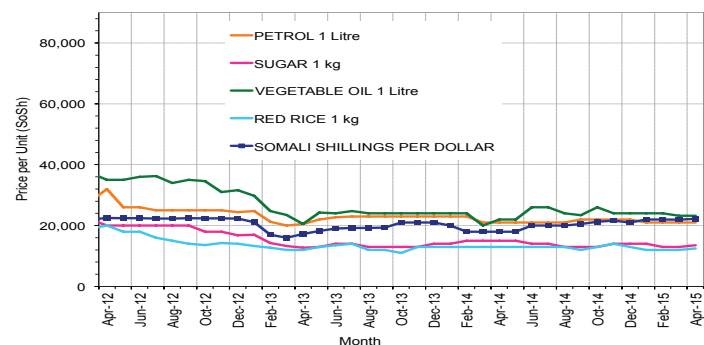


Figure 27: Goat Local Quality

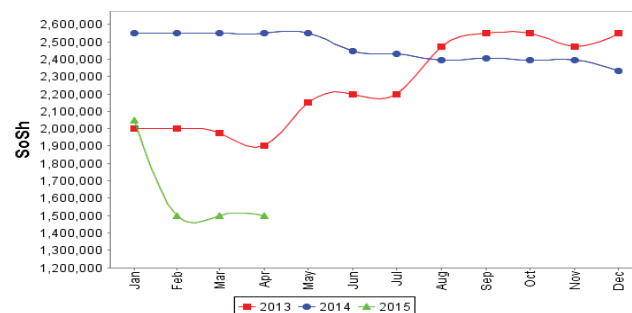


Figure 28: Exchange Rate

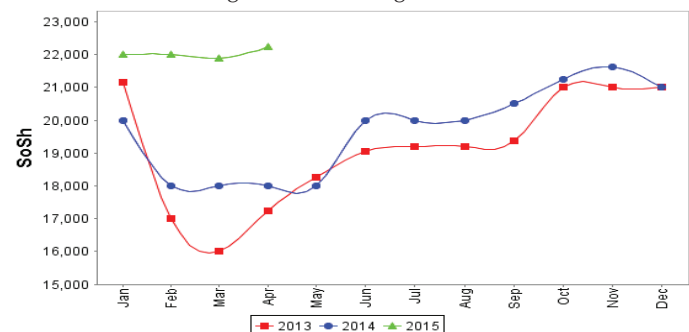
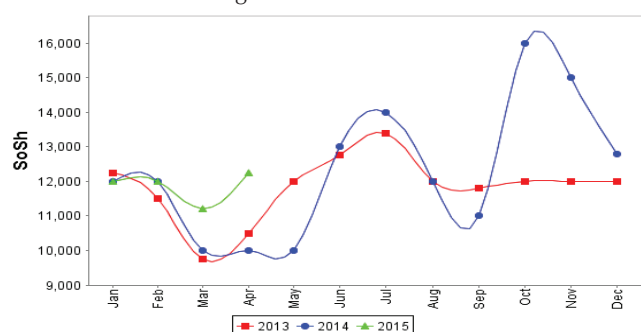


Figure 29: Wheat Flour



Regional analysis: Central Regions

Indicator	5-Year Average (2010-2014)	Apr-14	Mar-15	Apr-15 Nominal Price	Apr-15 Real (Deflated) Price	% Change Previous Month	% Change Same Month Previous Year	% Change 5-year avrg (2010-2014)
Imported Commodities Prices								
Diesel 1 litre	30,662	27,300	24,040	23,600	12,507	-2%	-14%	-23%
Imported Red Rice 1kg	22,496	18,550	17,800	17,150	9,061	-4%	-8%	-24%
Petrol 1 litre	27,517	24,650	23,800	23,650	12,534	-1%	-4%	-14%
Sugar	27,135	20,000	19,160	19,000	10,050	-1%	-5%	-30%
Vegetable Oil 1 litre	49,170	41,000	39,080	37,650	20,012	-4%	-8%	-23%
Wheat Flour 1kg	18,796	15,300	15,840	15,900	8,394	0%	4%	-15%
Wheat Grain 1kg	16,720	15,688	17,733	18,167	9,605	2%	16%	9%
Cereal Prices								
Red Sorghum 1kg	13,980	13,750	10,750	10,750	5,643	0%	-22%	-23%
White Maize 1kg	14,476	16,000	13,320	12,600	6,631	-5%	-21%	-13%
Livestock & Livestock Product Prices								
Camel Local Quality (Head)	9,278,875	10,821,875	12,450,000	12,275,000	6,557,095	-1%	13%	32%
Cattle Local Quality (Head)	2,425,000	-	-	-	-	-	-	-
Fresh Camel Milk 1 litre	38,400	33,750	31,480	29,600	15,712	-6%	-12%	-23%
Goat Export Quality (Head)	1,490,200	1,433,333	1,377,500	1,418,750	757,784	3%	-1%	-5%
Goat Local Quality (Head)	1,182,673	1,180,500	950,000	952,500	508,717	0%	-19%	-19%
Other Essential Items								
Charcoal 50kg	196,240	176,500	160,200	163,500	87,240	2%	-7%	-17%
Cowpeas 1 kg	25,157	17,200	21,760	21,950	11,625	1%	28%	-13%
Unskilled Labor Wage Rate	85,286	82,500	87,000	85,000	45,306	-2%	3%	0%
Firewood Bundle	32,302	32,000	35,000	35,000	18,597	0%	9%	8%
Local Sesame Oil 1 litre	92,700	88,700	91,000	91,000	48,511	0%	3%	-2%
Exchange Rate (Somali Shilling per USD)	25,439	20,680	21,756	21,760	11,524	0%	5%	-14%
Terms of Trade								
Labour Wage (Daily)/ Cereal (Rice(Kg))	4	4	5	5	-	0%	25%	25%
Local Goat (Head)/ Cereal (Rice(Kg))	54	64	53	56	-	6%	-13%	4%
Camel (Head)/Cereal (Kg)	435	583	699	716	-	2%	23%	65%
Price Indices								
Consumer Price Index	-	227	189	187	-	-1%	-17%	-

Figure 30: Trends in Cereal Prices

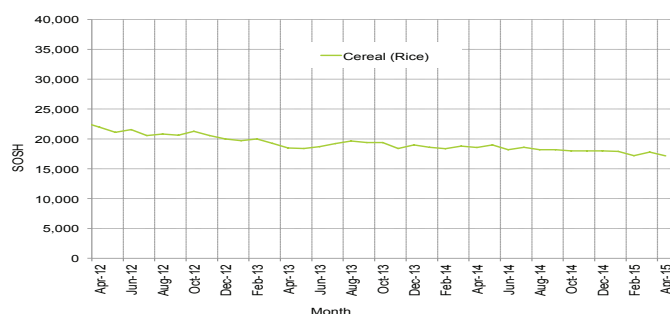


Figure 31: Trends in wage rates and relative purchasing power

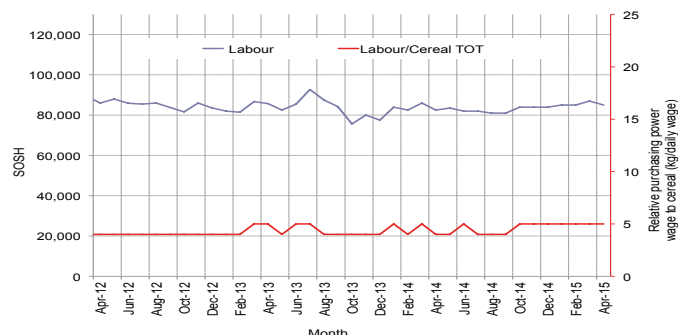


Figure 32: Imported Commodity Prices Compared to Exchange Rate

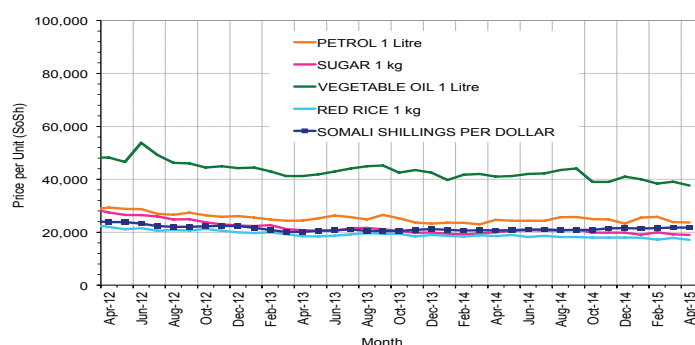


Figure 33: Goat Local Quality

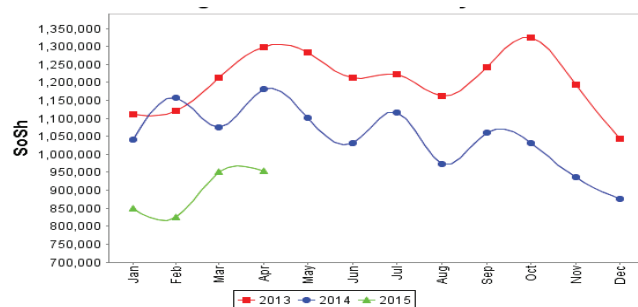


Figure 34: Exchange Rate

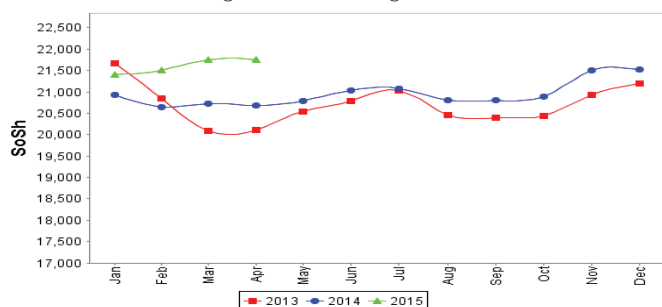
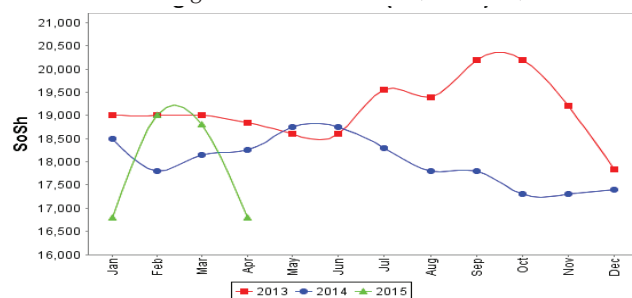


Figure 35: Water Drum (200 litres)



Regional analysis: Northeast Regions

Indicator	5-Year Average (2010-2014)	Apr-14	Mar-15	Apr-15 Nominal Price	Apr-15 Real (Deflated) Price	% Change Previous Month	% Change Same Month Previous Year	% Change 5-year avrg (2010-2014)
Imported Commodities Prices								
Diesel 1 litre	26,884	22,438	16,975	16,125	6,908	-5%	-28%	-40%
Imported Red Rice 1kg	19,432	15,000	15,075	14,875	6,365	-1%	-1%	-23%
Petrol 1 litre	24,100	20,125	17,363	17,375	7,452	0%	-14%	-28%
Sugar	24,215	17,000	16,775	16,375	7,017	-2%	-4%	-32%
Vegetable Oil 1 litre	42,667	33,000	31,850	30,875	13,319	-3%	-6%	-28%
Wheat Flour 1kg	17,677	14,750	14,625	14,250	6,094	-3%	-3%	-19%
Wheat Grain 1kg	26,000	21,500	21,000	21,000	9,027	0%	-2%	-19%
Cereal Prices								
Red Sorghum 1kg	21,962	21,250	21,700	22,125	9,516	2%	4%	1%
White Maize 1kg	19,451	20,500	20,200	19,000	8,158	-6%	-7%	-2%
Livestock & Livestock Product Prices								
Camel Local Quality (Head)	14,337,208	15,150,000	14,772,500	14,700,000	6,389,039	0%	-3%	3%
Cattle Local Quality (Head)	7,275,000	8,125,000	7,600,000	8,500,000	3,694,300	12%	5%	17%
Fresh Camel Milk 1 litre	44,056	39,250	34,913	33,625	14,515	-4%	-14%	-24%
Goat Export Quality (Head)	1,489,400	1,512,500	1,410,000	1,362,500	592,091	-3%	-10%	-9%
Goat Local Quality (Head)	1,380,600	1,408,750	1,260,625	1,282,500	557,320	2%	-9%	-7%
Other Essential Items								
Charcoal 50kg	343,512	383,750	387,500	378,750	164,518	-2%	-1%	10%
Cowpeas 1 kg	35,656	25,500	28,667	27,500	11,852	-4%	8%	-23%
Unskilled Labor Wage Rate	117,250	130,000	130,000	130,000	56,403	0%	0%	11%
Firewood Bundle	39,785	45,313	52,500	52,188	22,583	-1%	15%	31%
Local Sesame Oil 1 litre	92,529	96,250	92,750	93,750	40,647	1%	-3%	1%
Exchange Rate (Somali Shilling per USD)	25,969	20,688	21,089	21,131	9,084	0%	2%	-19%
Terms of Trade								
Labour Wage (Daily)/ Cereal (Rice(Kg))	6	9	9	9	-	0%	0%	50%
Local Goat (Head)/ Cereal (Rice(Kg))	73	94	84	86	-	2%	-9%	18%
Price Indices								
Consumer Price Index	-	220	230	230	-	0%	5%	-

Figure 36: Trends in Cereal Prices

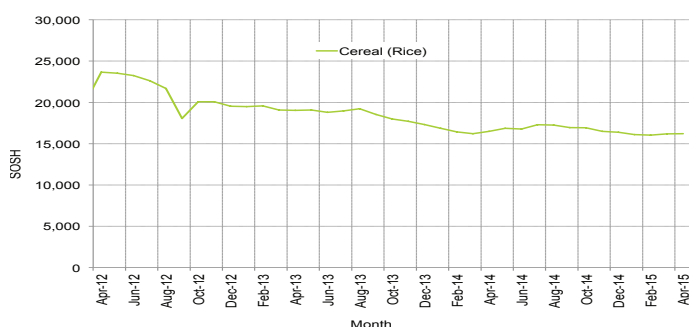


Figure 37: Trends in Wage Rates and Relative Purchasing Power

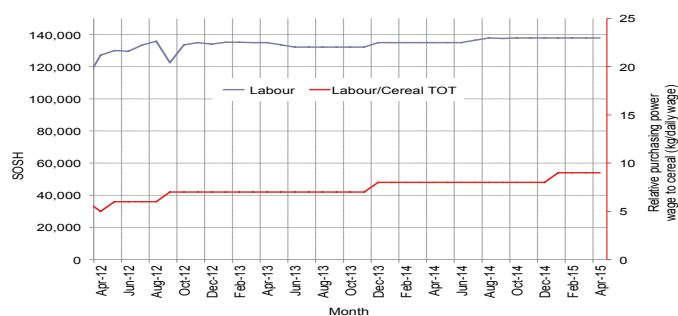


Figure 38: Imported Commodity Prices Compared to Exchange Rate

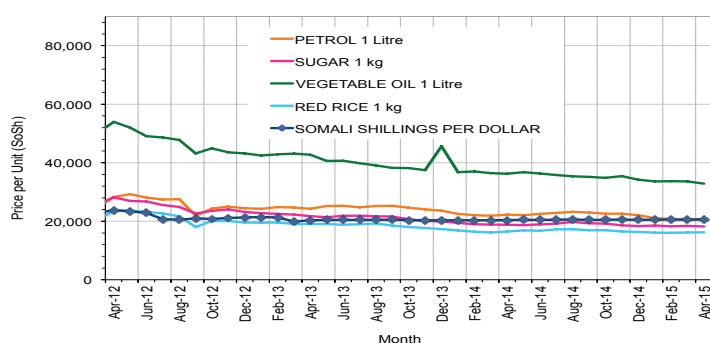


Figure 40: Exchange Rate

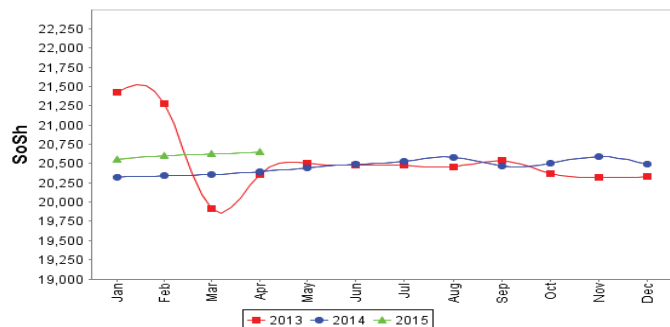


Figure 39: Goat Local Quality

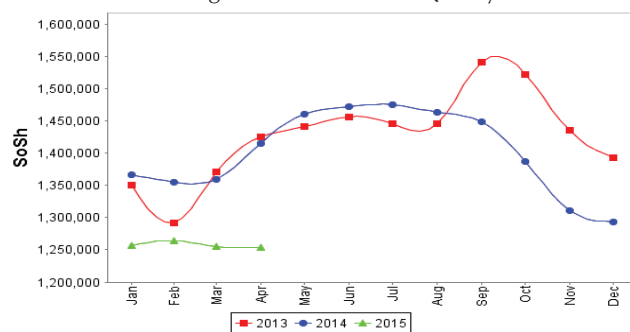
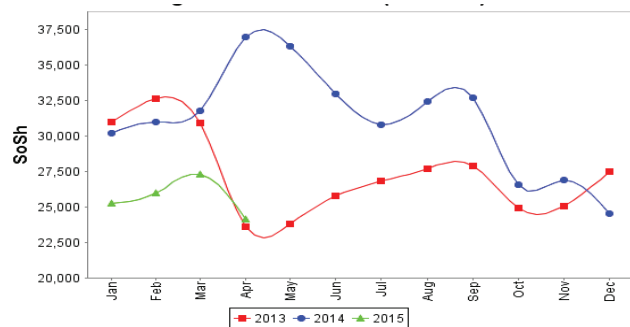


Figure 41: Water Drum (200 litres)



Regional analysis: Northwest Regions

Indicator	5-Year Average (2010-2014)	Apr-14	Mar-15	Apr-15 Nominal Price	Apr-15 Real (Deflated) Price	% Change Previous Month	% Change Same Month Previous Year	% Change 5-year avrg (2010-2014)
Imported Commodities Prices								
Diesel 1 litre	6,268	6,905	6,310	6,770	5,467	7%	-2%	8%
Imported Red Rice 1kg	5,064	5,020	5,020	5,020	4,028	0%	0%	-1%
Petrol 1 litre	6,685	7,253	6,950	7,280	5,887	5%	0%	9%
Sugar	5,900	5,820	5,900	5,640	4,538	-4%	-3%	-4%
Vegetable Oil 1 litre	11,390	12,000	13,340	12,680	10,328	-5%	6%	11%
Wheat Flour 1kg	4,277	4,380	4,340	4,280	3,420	-1%	-2%	0%
Wheat Grain 1kg	3,097	3,575	3,625	3,500	2,778	-3%	-2%	13%
Cereal Prices								
White Sorghum 1kg	3,321	3,860	3,860	3,560	2,828	-8%	-8%	7%
Yellow Maize 1kg	3,313	3,395	3,833	3,687	2,932	-4%	9%	11%
Livestock & Livestock Product Prices								
Camel Local Quality (Head)	2,509,500	3,850,000	4,100,333	4,233,333	3,481,242	3%	10%	69%
Cattle Local Quality (Head)	1,753,608	2,437,500	2,266,667	2,233,333	1,836,514	-1%	-8%	27%
Fresh Camel Milk 1 litre	5,633	5,800	5,400	6,275	5,060	16%	8%	11%
Goat Export Quality (Head)	400,540	465,300	440,820	434,225	356,991	-1%	-7%	8%
Goat Local Quality (Head)	297,135	346,500	327,250	317,750	261,206	-3%	-8%	7%
Other Essential Items								
Charcoal 50kg	37,755	46,950	53,400	52,800	43,321	-1%	12%	40%
Cowpeas 1 kg	9,596	9,138	11,625	11,750	9,563	1%	29%	22%
Unskilled Labor Wage Rate	37,930	48,400	50,400	51,200	42,005	2%	6%	35%
Firewood Bundle	2,937	3,667	4,167	3,833	3,052	-8%	5%	31%
Local Sesame Oil 1 litre	26,875	33,688	33,750	32,000	26,216	-5%	-5%	19%
Exchange Rate (Somaliland Shilling per USD)	6,655	6,925	7,070	7,140	5,772	1%	3%	7%
Terms of Trade								
Labour Wage (Daily)/ Cereal (Rice(Kg))	7	10	10	10	-	0%	0%	43%
Local Goat (Head)/ Cereal (Rice(Kg))	58	69	65	63	-	-3%	-9%	9%
Price Indices								
Consumer Price Index	-	129	124	122	-	-2%	-6%	-

Figure 42: Trends in Cereal Prices



Figure 43: Trends in Wage Rates and Relative Purchasing Power

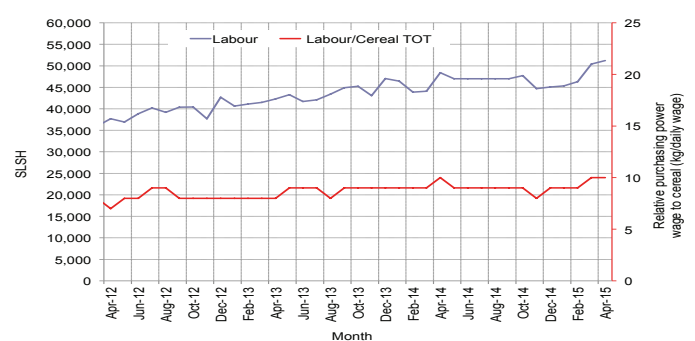


Figure 44: Imported Commodity Prices Compared to Exchange Rate

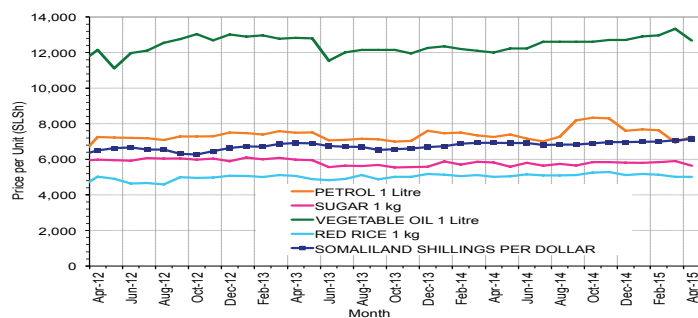


Figure 46: Exchange Rate

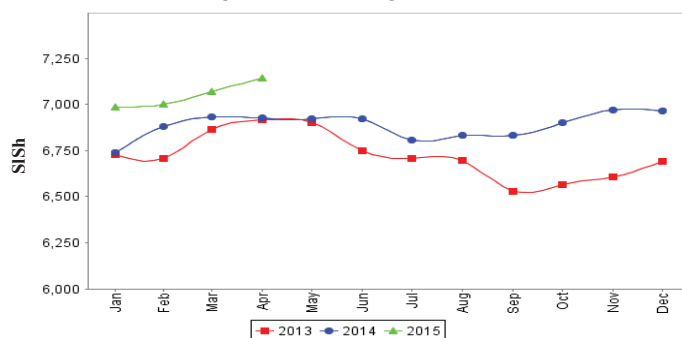


Figure 45: Goat Local Quality

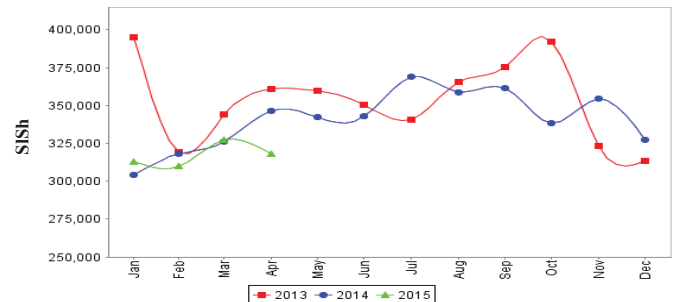
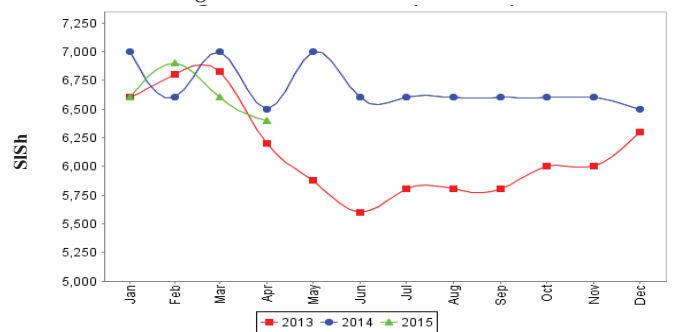


Figure 47: Water Drum (200 litres)



Trends in Livestock Exports

Table 1: Berbera Livestock Exports (Number of Heads)

	1998	1999	2000	2001	2002	2003	2004	2005	2006	2007	2008	2009	2010	2011	2012	2013	2014	Jan-Mar 2015
Shoats	957,224	2,048,136	1,601,083	51,546	341,711	563,107	859,404	1,023,795	1,017,242	1,350,054	1,219,519	1,556,003	2,584,810	3,104,684	3,219,584	2,888,955	3,089,592	530,392
Cattle	92,213	89,967	63,263	20,973	37,547	84,312	131,852	148,151	85,631	88,143	80,051	88,005	133,021	150,934	190,354	20,875	252,597	56,028
Camel	11,663	37,430	16,984	3,473	18,864	21,874	5,147	5,069	22,810	14,245	26,515	20,206	92,651	107,281	102,664	75,728	64,578	33,519

Figure 48: Berbera Livestock Exports (Number of Heads)

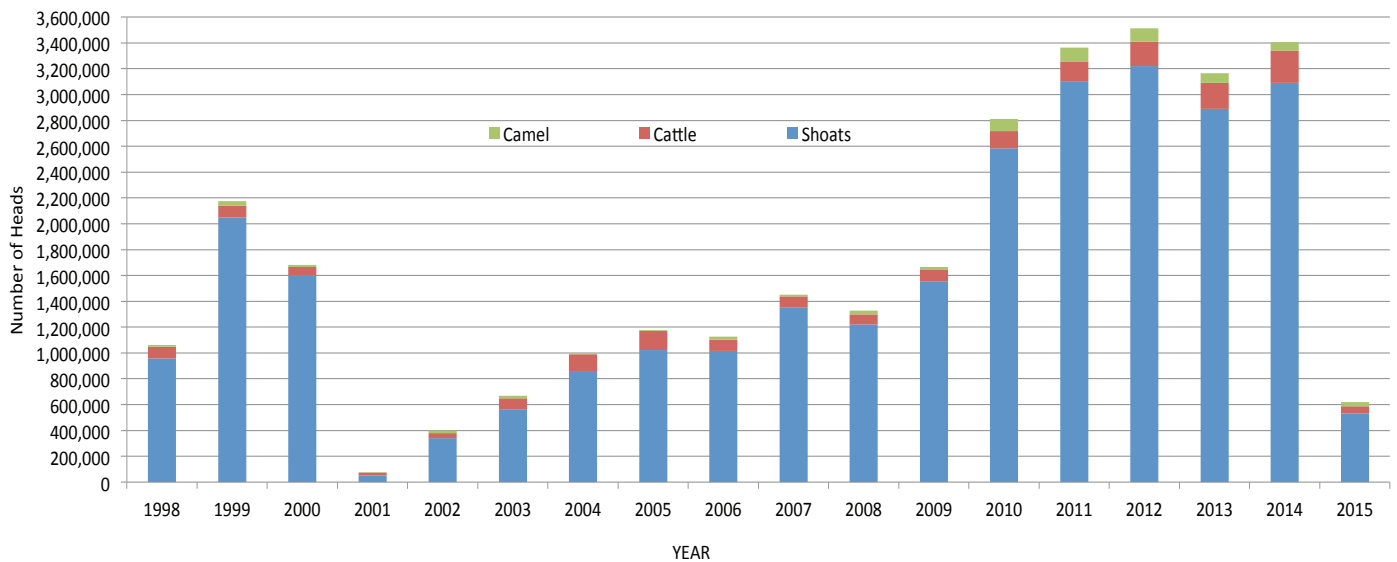
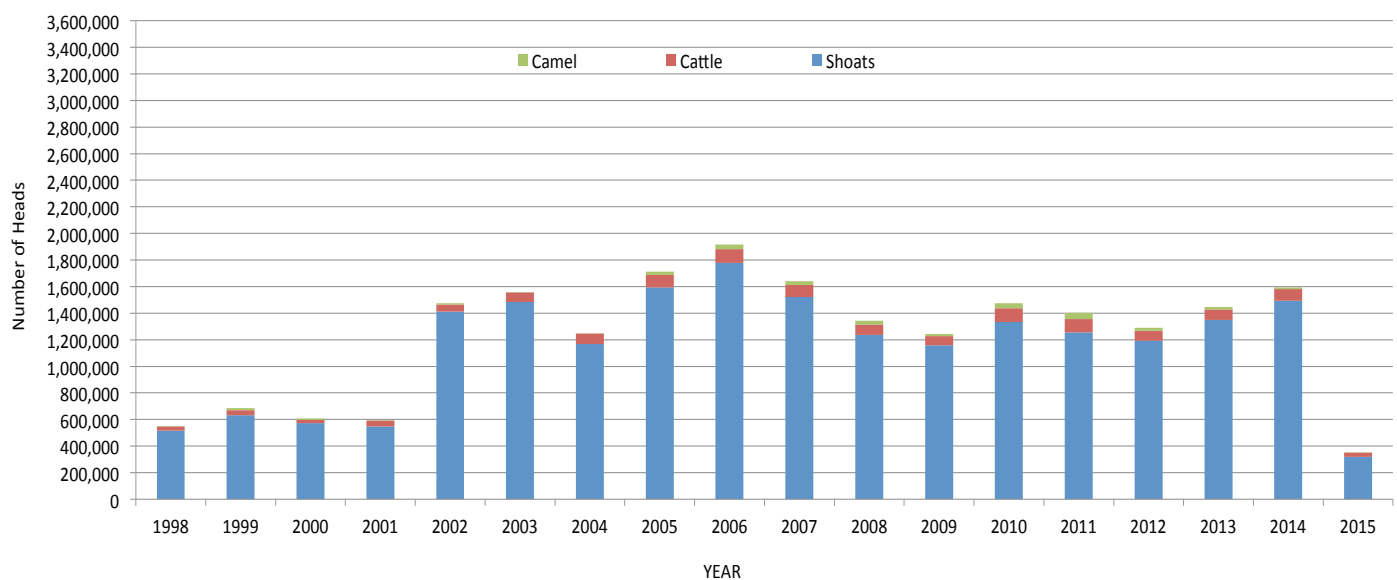


Table 2: Bossaso Livestock Exports (Number of Heads)

	1998	1999	2000	2001	2002	2003	2004	2005	2006	2007	2008	2009	2010	2011	2012	2013	2014	Jan-Mar 2015
Shoats	517,020	633,669	571,455	548,853	1,412,450	1,483,409	1,166,480	1,594,859	1,777,283	1,522,855	1,236,775	1,159,454	1,333,478	1,256,535	1,192,197	1,349,123	1,493,111	320,387
Cattle	29,492	36,586	27,604	42,248	53,313	71,328	79,994	91,910	104,595	89,190	78,046	67,385	103,808	99,058	76,043	77,353	87,759	29,639
Camel	3,938	15,544	8,177	1,950	9,720	4,259	2,488	26,109	33,724	27,580	27,639	15,331	36,865	45,878	22,288	19,032	12,251	2,990

Figure 49: Bossaso Livestock Exports (Number of Heads)

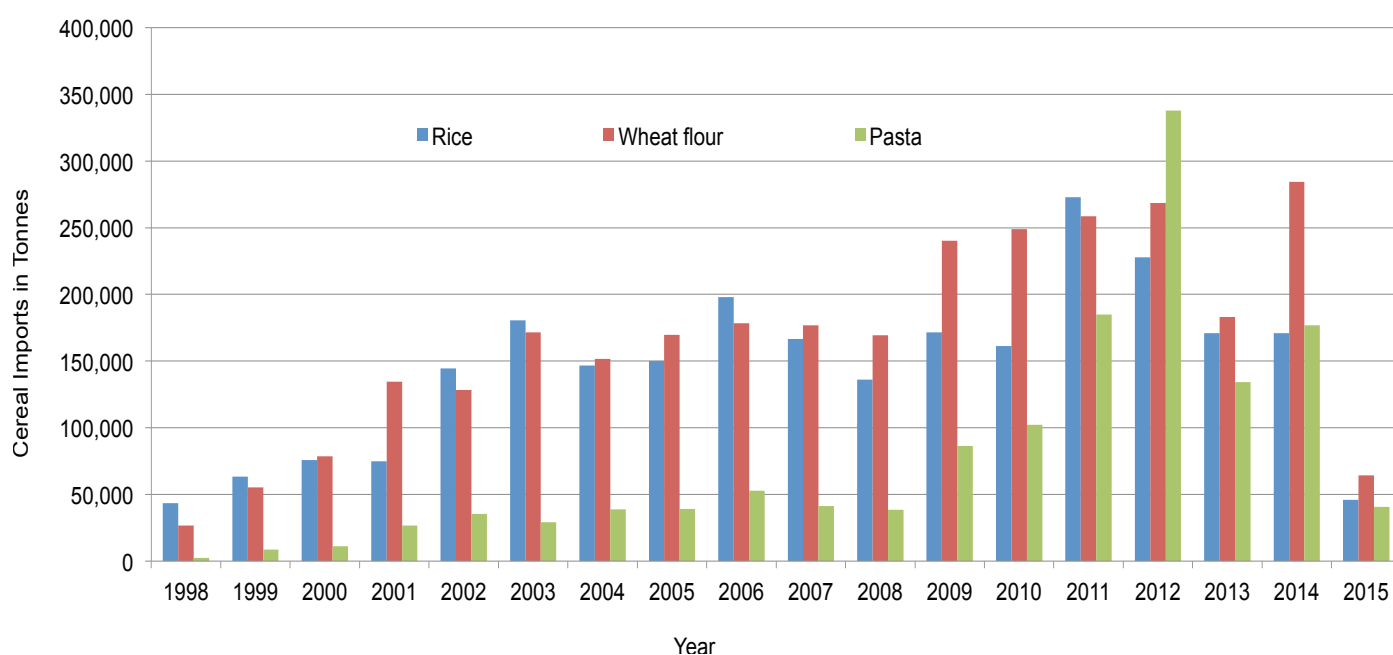


Trends in Cereal Imports

Table 3: Total Cereal Imports through Berbera, Bossaso and Mogadishu Ports (Tonnes) *

	1998	1999	2000	2001	2002	2003	2004	2005	2006	2007	2008	2009	2010	2011	2012	2013	2014	Jan-Mar 2015
Rice	43,410	63,464	75,687	74,729	144,600	180,614	146,567	150,017	198,101	166,626	136,007	171,472	161,415	272,877	227,955	170,868	170,888	46,026
Wheat flour	26,774	55,176	78,555	134,425	128,263	171,442	151,555	169,583	178,345	176,821	169,208	240,247	249,080	258,679	268,491	183,058	284,230	64,143
Pasta	2,455	8,544	11,071	26,702	35,425	29,273	38,749	39,153	52,815	41,331	38,441	86,372	102,373	184,849	337,878	134,311	176,951	40,596

Figure 50: Total Cereal Imports (Berbera, Bossaso and Mogadishu)



* Berbera and Bosasso import data is up to March 2015 and Elman (Mogadishu) is up to Jan 2015.