

Market DataUpdate



Food Security and Nutrition
Analysis Unit - Somalia



April 2014 (Issued May 19, 2014)

Highlights

Inflation: The Consumer Price Index (CPI) showed monthly increases in April 2014 in Central (by 15%) and Southern zones (4%) of Somalia but remained stable in the Northern Somali shilling (SoSh) zone; the CPI dropped marginally (by 2%) in Somaliland shilling (SiSh) areas. Inflation rose year-on-year across the country, most significantly (by 22%) in Central zone. Compared to the base period (March 2007), CPI increased moderately in SiSh regions and significantly in SoSh areas.

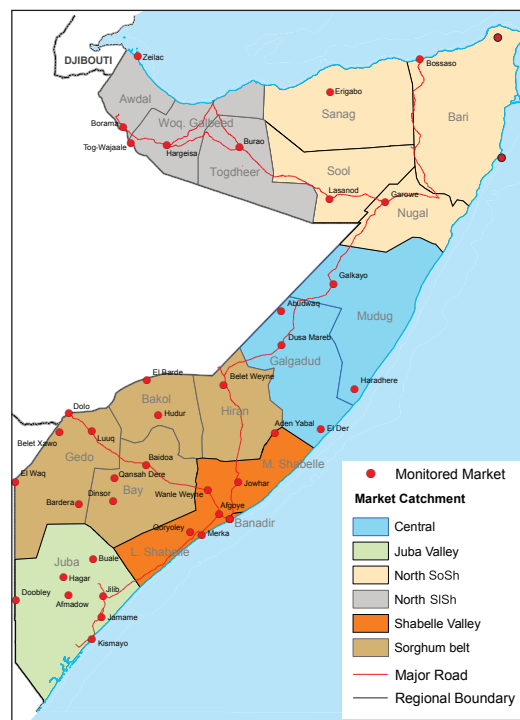
Exchange rate: The exchange rate between local currencies (SoSh and SiSh) and the United States Dollar (USD) remained stable in April 2014 in the North and Central, but depreciated month-on-month in most southern regions. Compared to a year ago (April 2013), the SoSh lost value in southern regions but remained stable in central and northern regions; the SiSh also remained unchanged year-on-year. Conversely, the SoSh shows a strong gain in value compared to the five-year average (2009-2012), particularly in southern regions.

Local grain prices increased from March to April in most markets with the significant acceleration observed in Bakool, Middle Shabelle, Hiran and Mogadishu. The price surge in these regions stems from low/ erratic supplies on the markets due to various reasons, including deteriorated security situation, dwindling stocks from the prior below average seasonal (*Deyr*) harvest, less favourable *Gu* cereal production outlook and an increased demand as a result of recent refugee returns (mainly to Mogadishu). Relative stability in prices was recorded only in the northern regions. Annual (April 2013) comparison indicates significant swelling in local cereal prices in most regions; however, the prices are below their five-year average (March 2009-2013) levels across many regions.

Prices of imported food (rice, sugar, vegetable oil & wheat flour) quoted in local currency showed mild monthly changes in most regions with the exception of Bakool and Bay regions where they increased at moderate to high rates for most commodities. Prices of most of these commodities increased year-on-year in Banadir, Lower Shabelle, Bay and Bakool regions, while they fell in other markets. Compared to five-year averages, the prices exhibit declines in most SoSh areas (apart from Bakool where they increased) and mild gains in SiSh areas.

Livestock prices (for all species) show monthly increase in most regions. Similarly, milk prices (cattle and camel) rose month-on-month in most regions. Annual comparison indicates declines for local goat prices in most regions; the prices fell for big ruminants (cattle and/or camel) in Central and Northeast but predominantly gained in the South and Northwest. Milk prices show moderate to high annual increase in most regions of South-Central, while the changes are mild in the northern regions. Prices are higher for livestock and milk compared to the five-year average levels in most markets.

Labour wages showed mild monthly changes in most regions apart from Bay, Lower Shabelle and Northwest where they increased at moderate to high rates likely due to on-going seasonal farming activities. However, the labour wages show a significant monthly drop in Banadir region, which could be attributed to increased competition for unskilled labour from Somali refugees who have returned recently from various asylum countries. Labour wages rose annually in most regions except falling in Middle Juba, Banadir, Hiran and remaining stable in Northeast and Central. The labour wage rates are higher than their five-year average levels in most regions.



This Market Data Update is a monthly report that presents analysis of market information and is produced regularly as part of the monthly monitoring process.

The weekly price data is collected from 48 main markets and 51 rural markets throughout Somalia since 1995.

Market analysis is an integral part of all of FSNAU's annual food security projections and seasonal technical reports (Technical Reports on FSNAU Post *Gu* and *Deyr* Analysis).

Detailed market data are available online on www.fsnau.org/ids.

Regional Market Highlights

Terms of Trade (ToT) between labour wages and local cereals show monthly declines in April 2014 in most regions; the same trend is observed for ToT between local quality goat and cereals. This is mostly attributable to monthly cereal price increases. The annual comparison (with April 2013) also indicates reduced ToT in most regions. Compared to five-year average levels, the ToT daily labour rate/cereals is higher in most regions, apart from two Shabelle regions (stable) as well as Bakool and Hiran (lower); ToT local quality goat/cereals has a mixed pattern in southern regions but shows increases in Central and North.

Juba Regions: Prices of imported food (rice, sugar, wheat flour, diesel and vegetable oil) show mild monthly increases. Increases are also reported in the price of white maize (staple cereal in the regions) as well as for goat and camel, while cattle prices declined. The ToT between white maize and daily labour rate dropped by one unit in April. Annual price trend of the monitored items show mixed pattern, mostly declined or remained stable. Annual comparisons of ToT between labour and cereals indicate reduced rates in Middle Juba and stable rates in Lower Juba.

Sorghum Belt Regions (Bay, Bakool, Gedo and Hiran): Prices of imported food show mild changes in Gedo and Hiran, while they mostly increased in the regions of Bay and Bakool. Local cereal prices (red and white sorghum) show monthly gains across four regions with significant increases recorded in Bakool (red sorghum) and Hiran regions (white sorghum). Livestock prices also increased month-on-month. The ToT between labor wage and cereals fell in most regions, apart from Bay where it remained stable. Year-on-year price comparisons indicate increases for most imported food commodities in all regions apart from Hiran where prices fell for some commodities. Annual trend of livestock price is mixed across the regions of the Sorghum Belt and across livestock species, with significant declines of local quality goat prices recorded in Bakool and Hiran regions. The annual ToT between labour wage rates was stable in Gedo but shows declines elsewhere.

Shabelle Regions: Prices of imported food, livestock as well as labour wage rates increased month-on-month in Lower Shabelle and remained relatively stable in Middle Shabelle. Maize prices have shown moderate to high monthly increases in both regions. ToT (labour wage to cereals) fell from the levels in March 2014 in Middle Shabelle but remained stable in Lower Shabelle. Annual comparison indicates moderate to high increases in the prices of imported commodities in Lower Shabelle and mild to moderate changes in Middle Shabelle. Maize prices rose significantly year-on-year, while goat prices exhibited mild changes in both regions. The ToT between labour wage and cereals declined mostly due to significant annual cereal price gains recorded in two Shabelle regions.

Central Regions: Prices of imported diesel and petrol exhibited mild monthly increases, while imported food prices declined marginally. The price increases are recorded for local cereals and local quality goat. Particularly high (41%) monthly increase is recorded for white maize due to low supplies from maize-producing southern regions. The ToT between local quality goat and rice (64 kg/ head) increased by 11 kgs when compared to the levels in March 2014. Annual comparisons indicate mild price changes for most of the imported commodities in April 2014. Local cereal prices are significantly higher compared to a year ago (Apr 2014), while livestock (camel and local goat) prices are lower. As a result, the ToT dropped by 9 kgs on an annual basis.

Northeast Regions: General price stability or mild monthly changes were recorded in the region in April 2014. Prices of food imports and livestock (camel, goat) are lower compared to the previous year while local cereals have increased moderately. ToT between local quality goat and rice was equivalent to 94 kg/head in April 2014, indicating monthly increase of four kgs and a yearly increase of eight kgs.

Northwest Regions: Prices of imported commodities and local cereals show mild monthly changes in April 2014. Prices of all livestock species rose month-on-month with high monthly surge recorded particularly for big ruminants (cattle, camel). Compared to the previous year, prices fell for most imported commodities as well as for local quality goat, while they increased for locally-produced white sorghum as well as for big ruminants. The ToTs between labor wage and rice and between local quality goat and rice increased on a monthly basis. The annual trend is similar for the ToT between labor wage and rice, while the ToT between local quality goat and rice declined marginally.

Banadir Region: Prices of most imported commodities remained relatively stable or showed mild increases over the last one month. However, cereal prices (white maize) spiked significantly in the main Bakara market in Mogadishu-city due to low supplies from Shabelle regions (main supplier) as well as increased local demand following recent returns of Somali refugees to the city; the latter has also resulted in increased competition for unskilled labour leading to a sharp drop in unskilled labour wages. The prices rose year-on-year for most of the imported commodities, white maize as well as livestock. The ToT between labour wage and white maize fell in April 2014 from the levels in the previous month and from the same month last year (Apr 2013).

Table 1: ToT between Cereals (kg) per Daily Labour Wage Rate, by Region

Regions	Apr 2014*(kg)	% change from:	
		Mar 2014	Apr2013
Banadir/ Mogadishu	24	-20%	4%
Bay	20	0%	-9%
Bakool	5	-29%	-29%
Gedo	16	-6%	0%
Hiran	10	-17%	-29%
Juba	10	-9%	-9%
Shabelle	8	-11%	-38%
Northeast	6	0%	-25%
Northwest	13	18%	0%
Central	6	-14%	-25%

* Cereal types used for ToT calculation: White Maize (Banadir, Hiran, Juba, Shabelle), Red Sorghum (Bay, Bakool, Gedo, Central, Northeast) and White Sorghum (Northwest)

International Market Highlights

Diesel: The Free on Board (FoB) price of crude oil in Dubai, the main source of Somalia's oil imports, showed a marginal monthly increase (0.3%) to \$104.68/barrel in April 2014¹. Crude oil prices are three percent higher when compared to the quotations the same month last year (April 2013).

In the port cities of Mogadishu and Bossaso monthly diesel price (in local currency terms) trend indicates a stable situation and a marginal drop respectively. Compared to April 2013, a decline in the retail cost of diesel is reported in Bossaso but stable levels in Mogadishu (Figure 1).

Rice: Export price of the benchmark Thai (white) rice (Grade A1 Super 1/B) fell by five percent month-on-month to close at USD 408 per tonne in April 2014². The Thai rice price is 26 percent lower compare to the levels a year ago (April 2013).

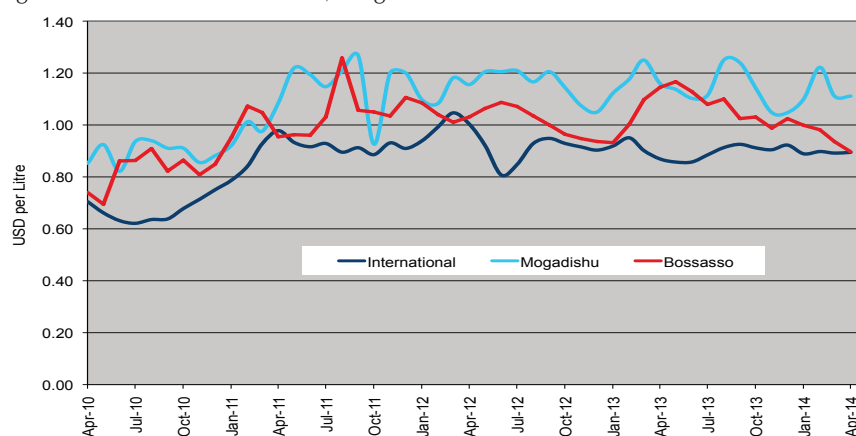
The cost of imported rice remains stable since January 2014 both in Mogadishu and Bossaso markets. Prices show moderate annual changes from the April 2013 levels in both cities - falling (12%) in Bossaso and increasing (8%) in Mogadishu (Figure 2).

Wheat: The International Grain Council's wheat sub-Index increased fell by two percent month-on-month reflecting ample global supplies and favourable prospects for 2014 harvests³. The sub-index is down by four percentage points year-on-year ([Figure 3].

Wheat flour prices have not changed month-on-month in the two port cities but exhibited mild annual decreases in both locations (by 8% in Bossaso and by 5% in Mogadishu). The annual trend in local markets reflects the trends on international markets (Figure 4).

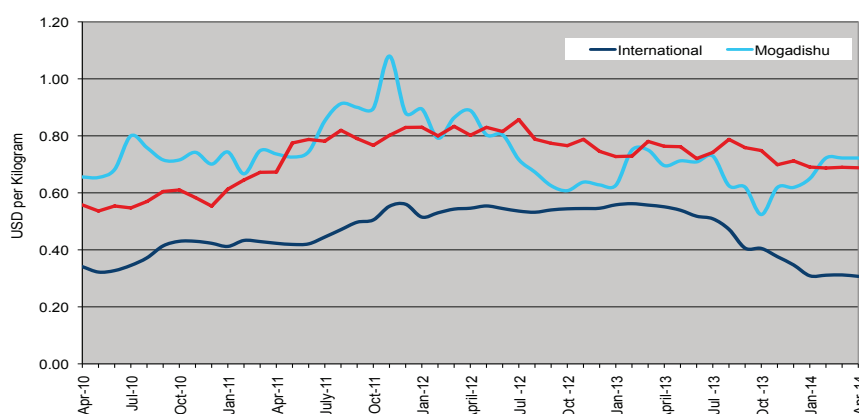
Sugar: The FAO Sugar Price Index averaged 249.9 points in April, down by 1.6 percent from March. The decline is mainly attributed to large sugar availabilities in the main producing regions (Thailand, India, and Australia)⁴. The index dropped by one percentage point since a year ago (April 2013).

Figure 1: Diesel Prices in Dubai, Mogadishu and Bossaso



Source: FSNAU Market Price Monitoring System, FAO Statistics, 2014

Figure 2: Rice Prices in Bangkok (FOB), Mogadishu and Bossaso Markets



Source: FSNAU Market Price Monitoring System, FAO Statistics, 2014

Figure 3: International Wheat Prices (Index)



Source: International Grain Council, 2014

¹ Organization of the Petroleum Exporting Countries (10 April 2014), Monthly Oil Market Report [Online]. Available from http://www.opec.org/opec_web/en/publications/338.htm

² Food and Agriculture Organisation (10 April 2014) Global Food Price Monitor [Online]. Available from http://www.fao.org/giews/english/gfpm/GFPM_05_2014.pdf

³ International Grain Council (27 March 2014), Grain Market Report (GMR), Issue 442 [Online]. Available from <http://www.igc.int/downloads/gmrsummary/gmrsumme.pdf>

Sugar prices increased marginally in Bossaso but remained stable in Mogadishu month-on-month. When compared to April 2013 price levels, the commodity was exchanged at a lower rate (by 14%) in Bossaso but at a higher rate (18%) in Mogadishu. The annual price changes are driven by international market price trends and reduced humanitarian food supply in the South (Figure 5).

Cooking Oil: The **FAO Vegetable Oil Price Index** averaged 199 points in April, 2.8 percent lower compared to March⁵. The drop in the index is mostly driven by palm oil prices, which fell following reports of reduced anticipated import demand, particularly from the European Union. The index rose by three percent year-on-year (April 2013).

Monthly vegetable oil price has been stable in Bossaso since January 2014 but in Mogadishu prices increased moderately (by 10%) in April compared to March. Annual comparison (compared to April 2013) indicates a price increase in Mogadishu (by 7%) and decline in Bossaso (by 11%).

Figure 4: Wheat Prices: Mogadishu and Bossaso Markets

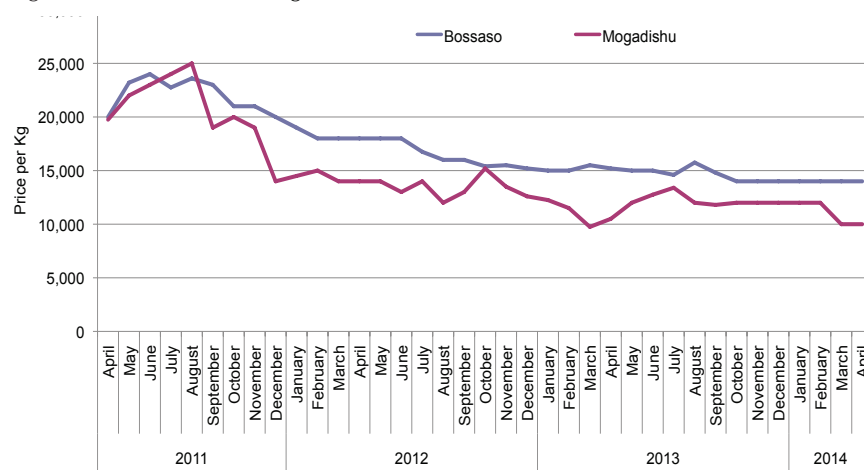
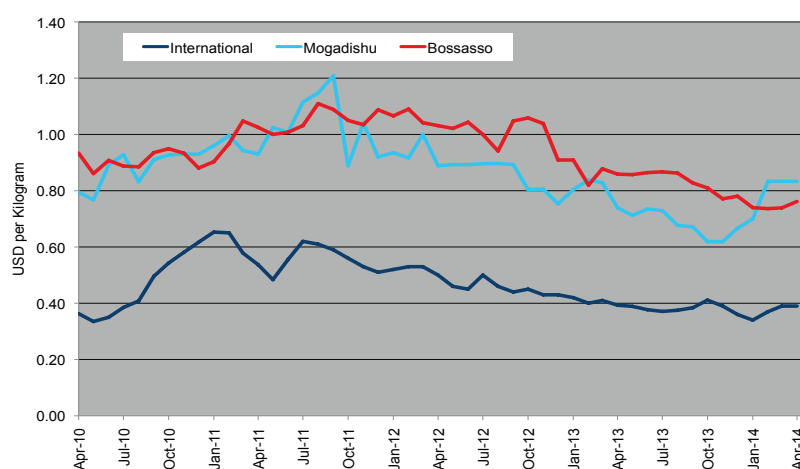


Figure 5: Sugar Prices: International, Mogadishu and Bossaso Markets



Source: FSNAU Market Price Monitoring System, International Sugar Organization, 2014

⁴ Food and Agriculture Organisation of the United Nations (March 2014), World Food Situation: The FAO Food Price Index [Online] Available from <http://www.fao.org/worldfoodsituation/foodpricesindex/en/>

⁵ Ibid

National Trends: CPI, Exchange Rates, Cereal Prices and Relative Purchasing Power

Figure 6: Terms of Trade Between Wage Rates and Selected Cereals

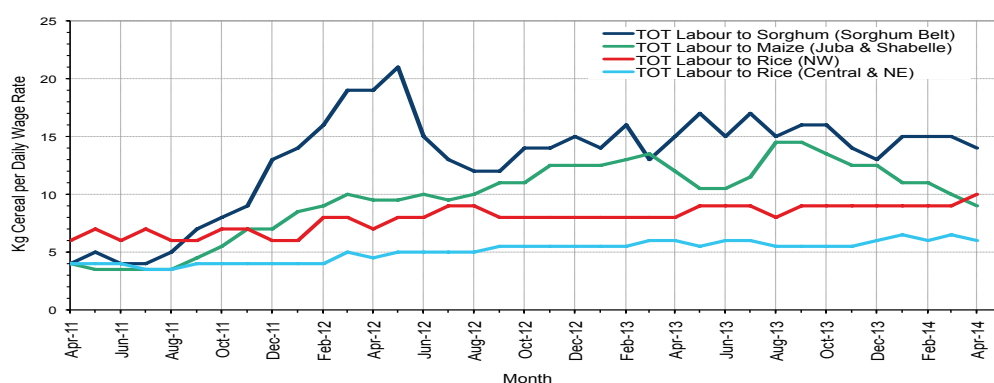


Figure 7: Monthly Exchange Rate for Selected Regions (SoSh and SISH to USD)

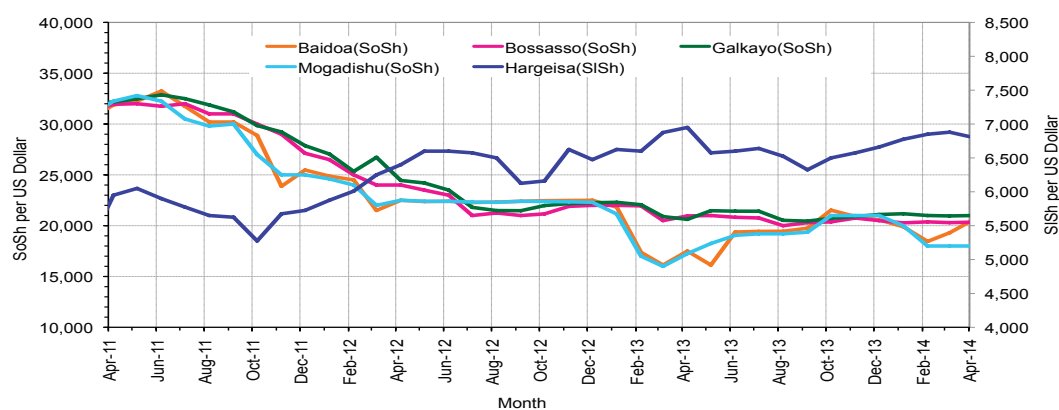


Figure 8: Monthly Trends in Consumer Price Index (CPI, March 2007=100)

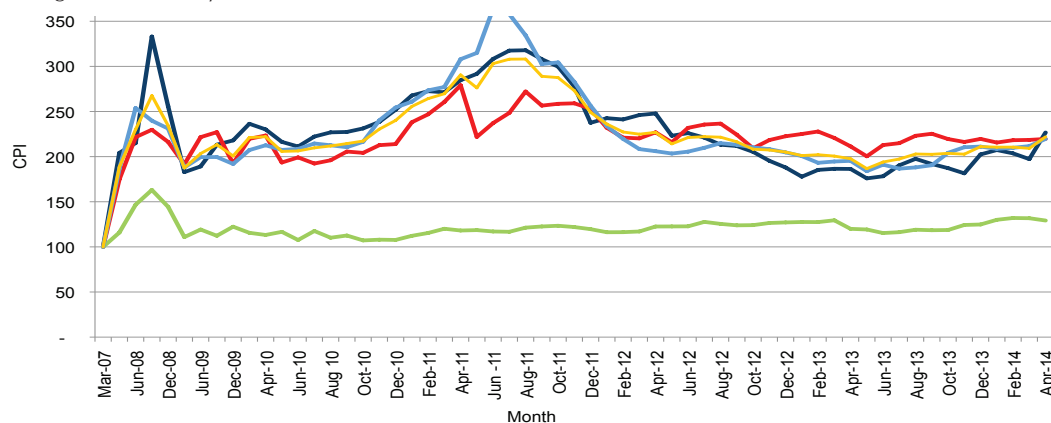
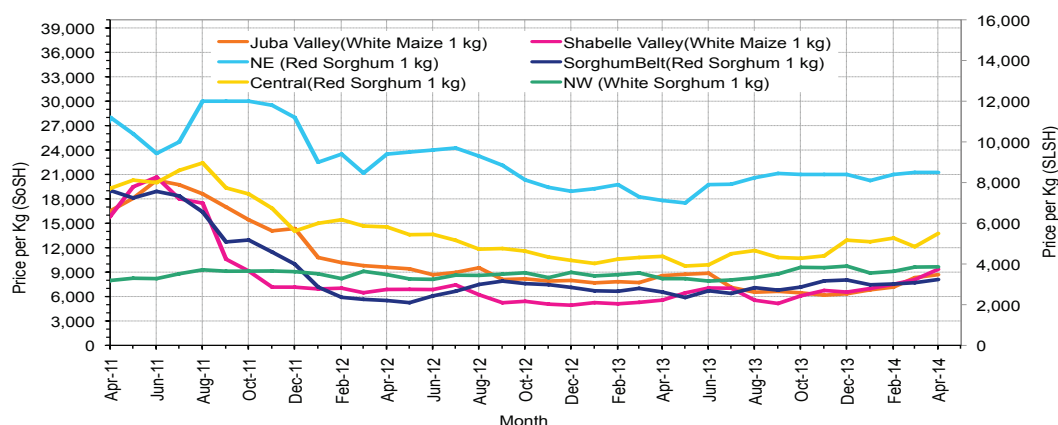


Figure 9: Monthly Trends in Local Cereal Prices



Regional analysis: Juba Regions

Indicator	5-Year Average (2009-2013)	Apr-13	Mar-14	Apr-14 Nominal Price	Apr-14 Real (Deflated) Price	% Change Same Month Previous Year	% Change Previous Month	% Change 5-year avrg (2009-2013)
Imported Commodities Prices								
Diesel 1 litre	30,258	28,029	25,200	26,429	11,935	-6%	5%	-13%
Imported Red Rice 1kg	20,604	15,457	14,629	15,286	6,861	-1%	4%	-26%
Petrol 1 litre	32,167	28,114	25,686	27,607	12,472	-2%	7%	-14%
Sugar	23,864	18,714	15,029	15,821	7,105	-15%	5%	-34%
Vegetable Oil 1 litre	44,557	34,071	30,714	32,143	14,538	-6%	5%	-28%
Wheat Flour 1kg	18,967	15,857	14,800	15,000	6,731	-5%	1%	-21%
Wheat Grain 1kg	15,000	-	-	-	-	-	-	-
Cereal Prices								
Red Sorghum 1kg	10,000	-	10,000	10,000	4,454	-	0%	0%
White Maize 1kg	10,687	8,586	8,515	8,896	3,951	4%	4%	-17%
Livestock & Livestock Product Prices								
Camel Local Quality (Head)	8,766,474	10,461,048	10,004,700	10,262,583	4,673,362	-2%	3%	17%
Cattle Local Quality (Head)	3,201,254	4,036,400	4,385,200	4,393,700	2,000,740	9%	0%	37%
Fresh Camel Milk 1 litre	21,746	17,700	22,457	24,458	11,038	38%	9%	12%
Goat Export Quality (Head)	1,248,333	1,635,543	1,453,629	1,581,857	720,259	-3%	9%	27%
Goat Local Quality (Head)	778,985	1,035,029	931,429	964,536	439,139	-7%	4%	24%
Other Essential Items								
Charcoal 50kg	84,695	91,714	85,879	89,643	40,722	-2%	4%	6%
Cowpeas 1 kg	24,552	23,286	20,274	19,929	8,975	-14%	-2%	-19%
Unskilled Labor Wage Rate	94,373	92,929	93,150	90,571	41,145	-3%	-3%	-4%
Firewood Bundle	6,835	8,800	11,314	11,000	4,909	25%	-3%	61%
Local Sesame Oil 1 litre	70,655	69,286	81,650	82,929	37,665	20%	2%	17%
Exchange Rate (Somali Shilling per USD)	26,518	18,214	19,609	20,639	9,299	13%	5%	-22%
Terms of Trade								
Labour Wage (Daily)/ Cereal (Maize(Kg))	9	11	11	10	-	-6%	-7%	15%
Local Goat (Head)/ Cereal (Maize(Kg))	73	121	109	108	-	-10%	-1%	49%
Price Indices								
Consumer Price Index	-	195	212	220	-	12%	4%	-

Figure 10: Trends in Cereal Prices

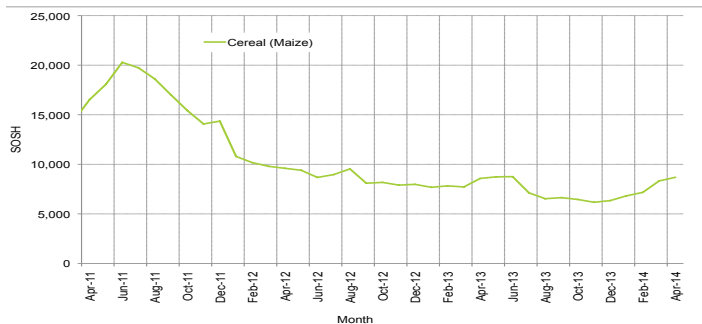


Figure 12: Imported Commodity Prices Compared to Exchange Rate

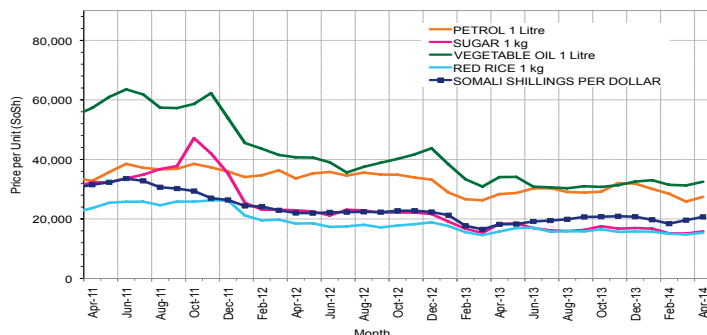


Figure 14: Exchange Rate

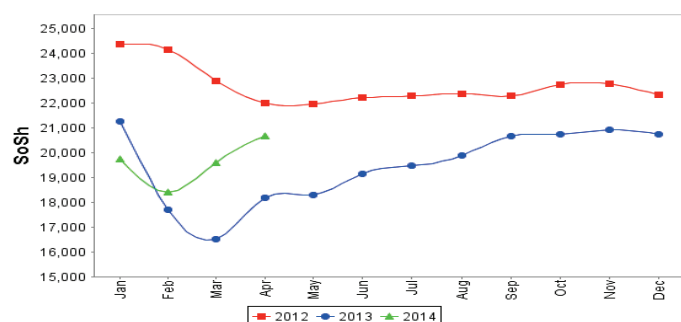


Figure 11: Trends in Wage Rates and Relative Purchasing Power

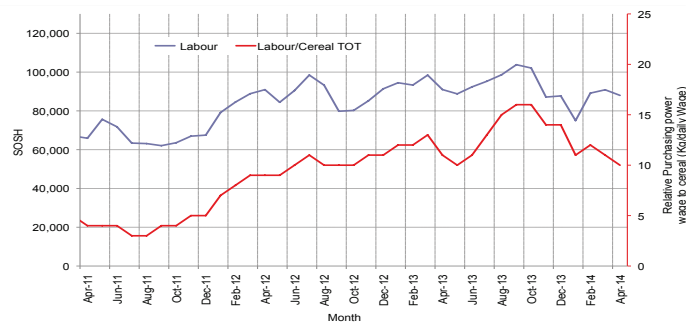


Figure 13: Goat Local Quality

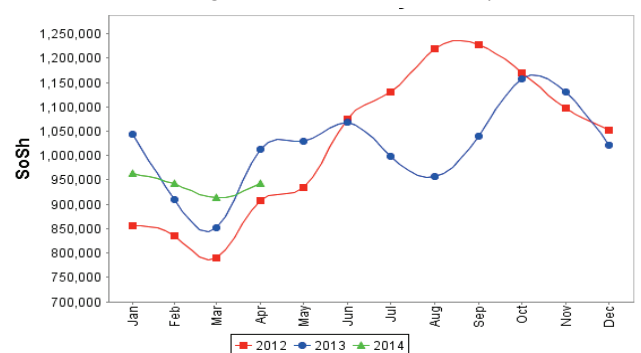
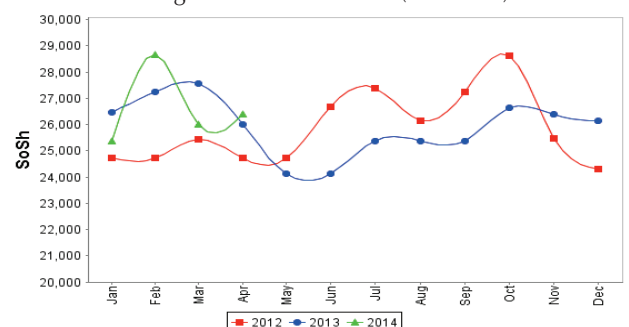


Figure 15: Water Drum (200 litres)



Regional analysis: Sorghum Belt Regions (Bay, Bakool, Gedo and Hiran)

Indicator	5-Year Average (2009-2013)	Apr-13	Mar-14	Apr-14 Nominal Price	Apr-14 Real (Deflated) Price	% Change Same Month Previous Year	% Change Previous Month	% Change 5-year avg (2009-2013)
Imported Commodities Prices								
Diesel 1 litre	32,208	28,559	28,555	30,068	13,593	5%	5%	-7%
Imported Red Rice 1kg	22,858	17,045	17,595	17,659	7,942	4%	0%	-23%
Petrol 1 litre	32,278	30,145	27,545	30,682	13,872	2%	11%	-5%
Sugar	24,693	18,309	18,318	18,750	8,439	2%	2%	-24%
Vegetable Oil 1 litre	45,985	40,859	38,582	40,909	18,529	0%	6%	-11%
Wheat Flour 1kg	19,572	15,055	16,927	17,364	7,807	15%	3%	-11%
Wheat Grain 1kg	10,732	8,550	12,575	12,663	5,667	48%	1%	18%
Cereal Prices								
Red Sorghum 1kg	9,427	6,550	7,702	8,093	3,585	24%	5%	-14%
White Maize 1kg	10,812	8,505	9,670	10,525	4,693	24%	9%	-3%
Livestock & Livestock Product Prices								
Camel Local Quality (Head)	9,423,939	12,701,364	12,822,500	13,461,111	6,129,935	6%	5%	43%
Cattle Local Quality (Head)	2,906,625	3,562,500	4,148,438	4,435,313	2,019,690	25%	7%	53%
Fresh Camel Milk 1 litre	21,499	12,336	20,800	22,932	10,343	86%	10%	7%
Goat Export Quality (Head)	1,308,861	1,583,245	1,607,136	1,647,590	750,153	4%	3%	26%
Goat Local Quality (Head)	834,599	1,077,545	940,545	973,591	443,262	-10%	4%	17%
Other Essential Items								
Charcoal 50kg	136,800	150,659	146,614	147,136	66,904	-2%	0%	8%
Cowpeas 1 kg	25,233	17,950	23,495	23,740	10,711	32%	1%	-6%
Unskilled Labor Wage Rate	94,477	95,068	112,595	113,409	51,545	19%	1%	20%
Firewood Bundle	5,704	6,455	6,500	6,727	2,963	4%	3%	18%
Local Sesame Oil 1 litre	73,838	69,607	84,179	80,833	36,710	16%	-4%	9%
Exchange Rate (Somali Shilling per USD)	26,788	18,679	19,756	20,283	9,137	9%	3%	-24%
Terms of Trade								
Labour Wage (Daily)/ Cereal (Sorghum(Kg))	10	15	15	14	-	-3%	-4%	40%
Local Goat (Head)/ Cereal (Sorghum(Kg))	89	165	122	120	-	-27%	-1%	36%
Price Indices								
Consumer Price Index	-	195	212	220	-	12%	4%	-

Figure 16: Trends in Cereal Prices

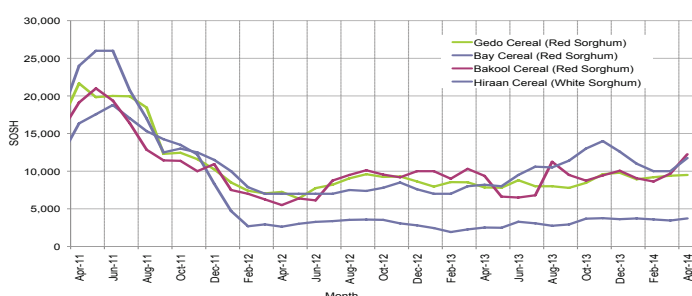


Figure 17: Trends in Wage Rates and Relative Purchasing Power

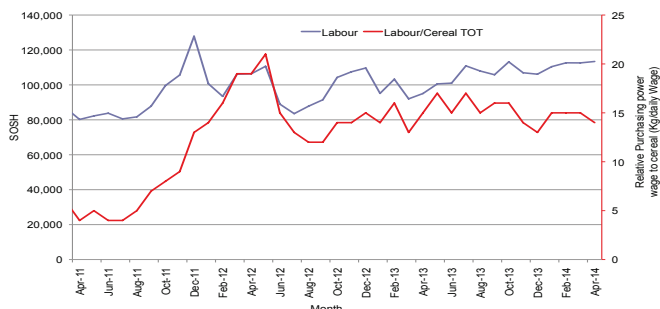


Figure 18: Imported Commodity Prices Compared to Exchange Rate

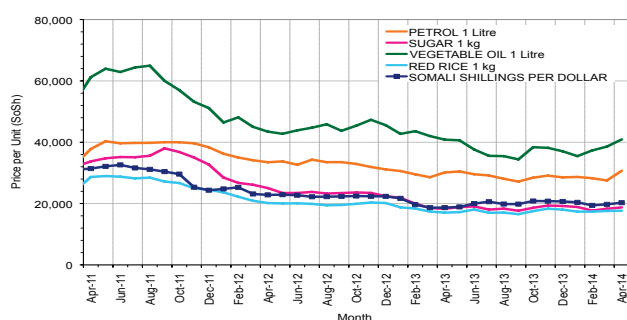


Figure 19: Goat Local Quality

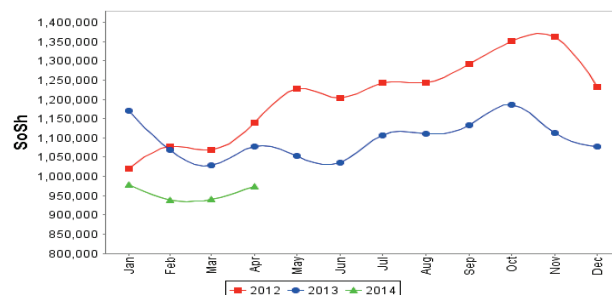


Figure 20: Exchange Rate

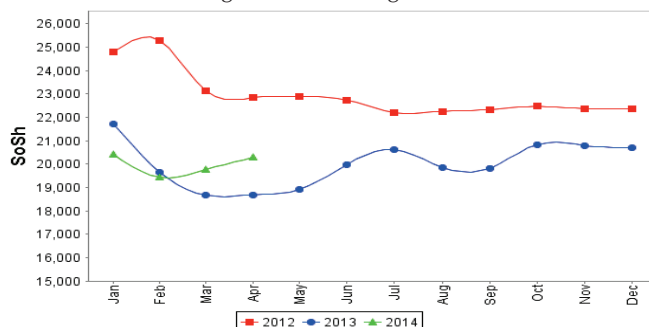
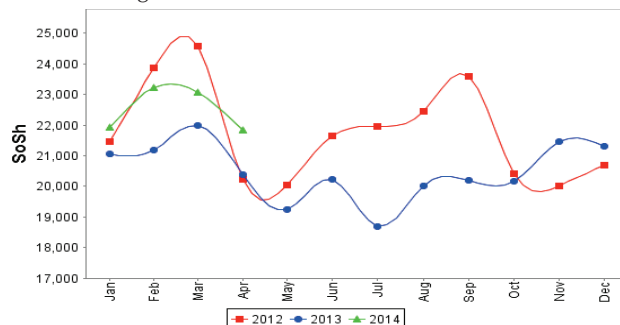


Figure 21: Water Drum (200 litres)



Regional analysis: Shabelle Regions

Indicator	5-Year Average (2009-2013)	Apr-13	Mar-14	Apr-14 Nominal Price	Apr-14 Real (Deflated) Price	% Change Same Month Previous Year	% Change Previous Month	% Change 5-year avrg (2009-2013)
Imported Commodities Prices								
Diesel 1 litre	28,600	24,667	27,250	28,000	12,651	14%	3%	-2%
Imported Red Rice 1kg	19,468	14,000	15,208	15,792	7,091	13%	4%	-19%
Petrol 1 litre	29,975	26,833	27,889	29,050	13,129	8%	4%	-3%
Sugar	22,200	15,000	15,542	16,333	7,338	9%	5%	-26%
Vegetable Oil 1 litre	35,680	24,233	27,639	29,833	13,486	23%	8%	-16%
Wheat Flour 1kg	16,991	13,833	15,708	16,000	7,186	16%	2%	-6%
Wheat Grain 1kg	6,691	4,133	25,000	26,000	11,740	529%	4%	289%
Cereal Prices								
Red Sorghum 1kg	10,128	9,912	9,331	9,851	4,386	-1%	6%	-3%
White Maize 1kg	8,870	5,565	8,079	9,353	4,159	68%	16%	5%
Livestock & Livestock Product Prices								
Camel Local Quality (Head)	12,878,834	18,265,000	18,242,333	20,287,500	9,238,594	11%	11%	58%
Cattle Local Quality (Head)	4,014,000	6,200,000	6,543,333	7,200,000	3,278,697	16%	10%	79%
Fresh Camel Milk 1 litre	19,815	18,117	18,222	24,333	10,981	34%	34%	23%
Goat Export Quality (Head)	1,513,650	1,770,500	1,847,917	1,975,000	899,292	12%	7%	30%
Goat Local Quality (Head)	1,061,450	1,314,333	1,342,611	1,464,500	666,816	11%	9%	38%
Other Essential Items								
Charcoal 50kg	116,135	133,856	118,194	125,750	57,165	-6%	6%	8%
Cowpeas 1 kg	23,429	16,890	16,369	16,554	7,439	-2%	1%	-29%
Unskilled Labor Wage Rate	64,491	70,167	69,097	74,375	33,770	6%	8%	15%
Firewood Bundle	4,920	6,833	7,722	6,000	2,632	-12%	-22%	22%
Local Sesame Oil 1 litre	56,091	58,667	73,972	69,850	31,709	19%	-6%	25%
Exchange Rate (Somali Shilling per USD)	26,863	17,818	19,056	20,350	9,167	14%	7%	-24%
Terms of Trade								
Labour Wage (Daily)/ Cereal (Maize(Kg))	7	13	9	8	-	-37%	-7%	9%
Local Goat (Head)/ Cereal (Maize(Kg))	120	236	166	157	-	-34%	-6%	31%
Price Indices								
Consumer Price Index	-	195	212	220	-	12%	4%	-

Figure 22: Trends in Cereal Prices

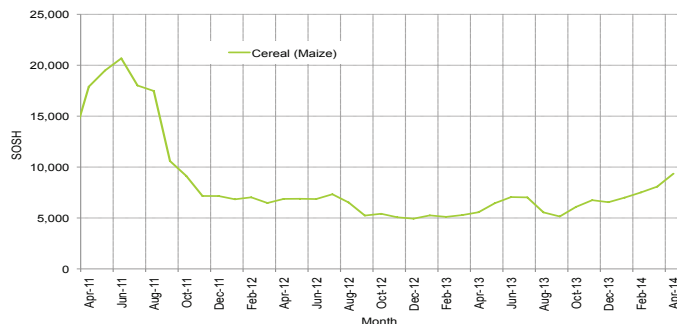


Figure 23: Trends in Wage Rates and Relative Purchasing Power

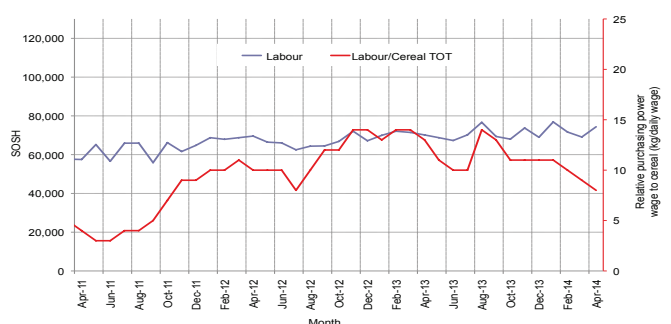


Figure 24: Imported Commodity Prices Compared to Exchange Rate

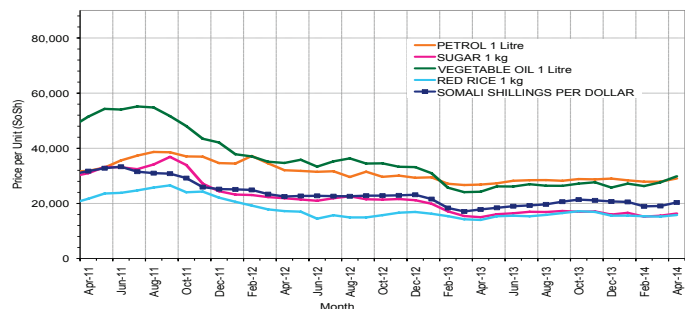


Figure 26: Exchange Rate

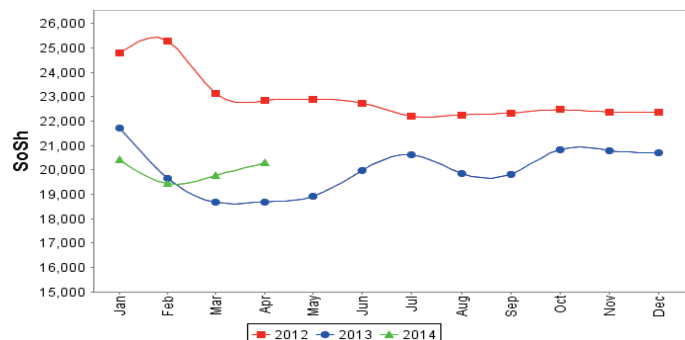


Figure 25: Goat Local Quality

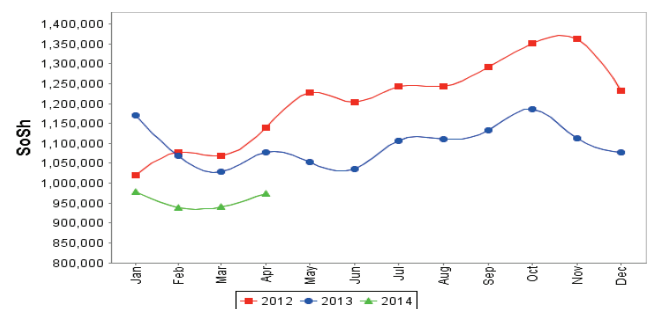
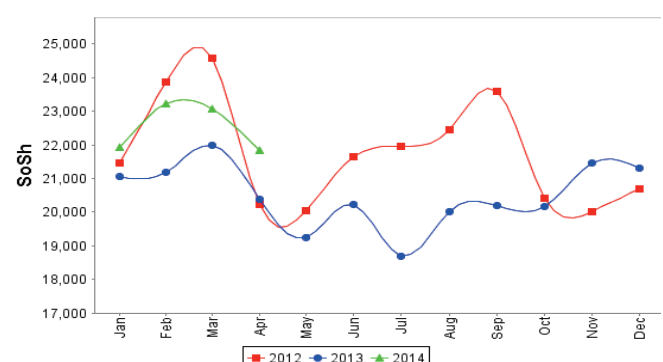


Figure 27: Water Drum (200 litres)



Regional analysis: Banadir Region

Indicator	5-Year Average (2009-2013)	Apr-13	Mar-14	Apr-14 Nominal Price	Apr-14 Real (Deflated) Price	% Change Same Month Previous Year	% Change Previous Month	% Change 5-year avrg (2009-2013)
Imported Commodities Prices								
Diesel 1 litre	24,380	18,458	20,533	20,458	9,216	11%	0%	-16%
Imported Red Rice 1kg	18,756	11,813	12,883	12,896	5,773	9%	0%	-31%
Petrol 1 litre	25,479	18,354	20,667	21,125	9,520	15%	2%	-17%
Sugar	20,458	13,000	14,283	14,271	6,399	10%	0%	-30%
Vegetable Oil 1 litre	34,559	22,458	22,933	23,896	10,782	6%	4%	-31%
Wheat Flour 1kg	14,666	11,167	11,993	12,033	5,380	8%	0%	-18%
Wheat Grain 1kg	11,137	8,248	7,533	7,542	3,335	-9%	0%	-32%
Cereal Prices								
Red Sorghum 1kg	8,742	5,171	6,833	7,388	3,264	43%	8%	-15%
White Maize 1kg	9,551	6,460	7,957	8,508	3,774	32%	7%	-11%
Livestock & Livestock Product Prices								
Camel Local Quality (Head)	15,212,500	-	-	-	-	-	-	-
Cattle Local Quality (Head)	3,875,000	-	-	-	-	-	-	-
Fresh Camel Milk 1 litre	21,026	20,167	21,200	21,167	9,539	5%	0%	1%
Goat Export Quality (Head)	1,775,000	2,175,000	3,000,000	3,000,000	1,366,065	38%	0%	69%
Goat Local Quality (Head)	1,559,875	1,971,875	2,475,000	2,468,750	1,124,140	25%	0%	58%
Other Essential Items								
Charcoal 50kg	167,109	187,000	183,000	191,625	87,164	2%	5%	15%
Cowpeas 1 kg	20,607	13,167	14,843	14,908	6,689	13%	0%	-28%
Unskilled Labor Wage Rate	75,758	100,000	104,833	78,125	35,477	-22%	-25%	3%
Firewood Bundle	5,964	7,000	8,160	8,100	3,589	16%	-1%	36%
Local Sesame Oil 1 litre	59,068	53,292	69,667	69,000	31,322	29%	-1%	17%
Exchange Rate (Somali Shilling per USD)	26,662	17,163	18,989	19,875	8,951	16%	5%	-25%
Terms of Trade								
Labour Wage (Daily)/ Cereal (Maize(Kg))	8	15	13	9	-	-41%	-30%	16%
Local Goat (Head)/ Cereal (Maize(Kg))	163	305	311	290	-	-5%	-7%	78%
Price Indices								
Consumer Price Index	-	195	212	220	-	12%	4%	-

Figure 28: Trends in Cereal Prices

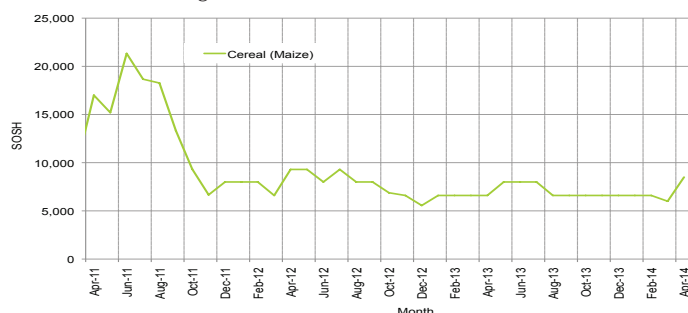


Figure 29: Bakara: Trends in Wage Rates and Relative Purchasing Power

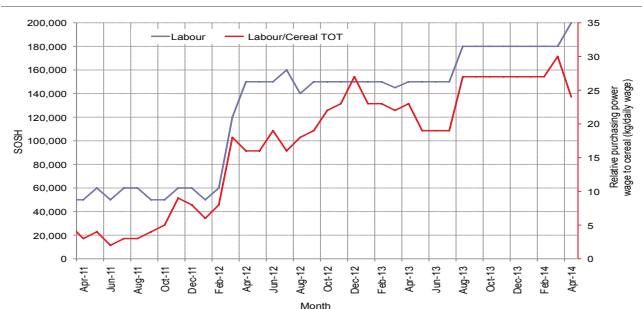


Figure 30: Imported Commodity Prices Compared to Exchange Rate

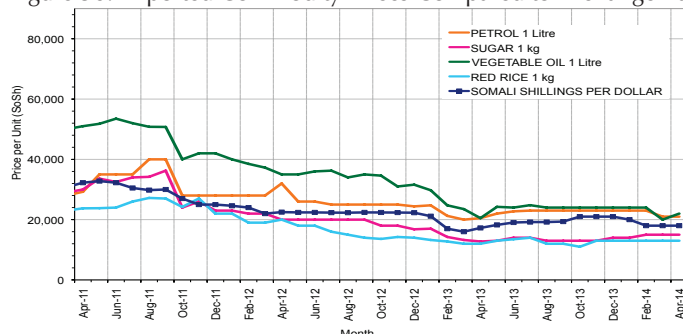


Figure 31: Goat Local Quality

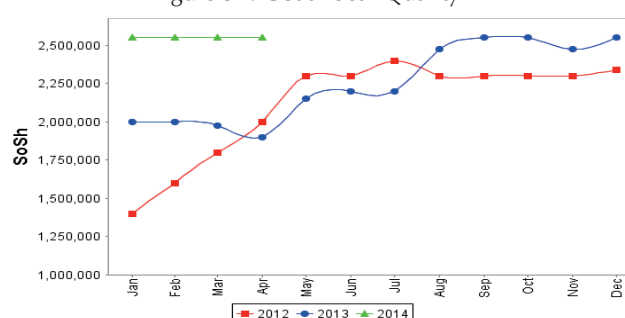


Figure 32: Exchange Rate

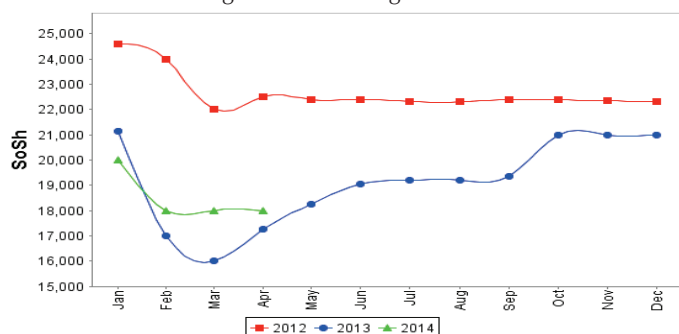
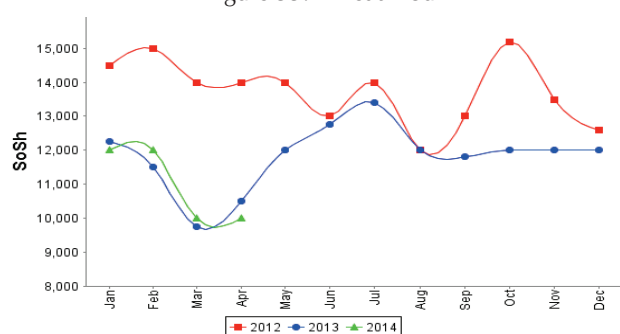


Figure 33: Wheat Flour



Regional analysis: Central Regions

Indicator	5-Year Average (2009-2013)	Apr-13	Mar-14	Apr-14 Nominal Price	Apr-14 Real (Deflated) Price	% Change Same Month Previous Year	% Change Previous Month	% Change 5-year avrg (2009-2013)
Imported Commodities Prices								
Diesel 1 litre	30,572	26,680	25,930	27,300	11,941	2%	5%	-11%
Imported Red Rice 1kg	24,276	18,480	18,800	18,550	8,082	0%	-1%	-24%
Petrol 1 litre	27,647	24,427	22,950	24,650	10,772	1%	7%	-11%
Sugar	27,155	20,787	19,550	20,000	8,721	-4%	2%	-26%
Vegetable Oil 1 litre	49,820	41,240	42,000	41,000	17,983	-1%	-2%	-18%
Wheat Flour 1kg	19,816	16,280	16,450	15,300	6,648	-6%	-7%	-23%
Wheat Grain 1kg	17,583	13,183	15,500	15,688	6,819	19%	1%	-11%
Cereal Prices								
Red Sorghum 1kg	12,840	10,940	12,125	13,750	5,965	26%	13%	7%
White Maize 1kg	13,316	10,100	11,375	16,000	6,957	58%	41%	20%
Livestock & Livestock Product Prices								
Camel Local Quality (Head)	8,581,166	11,100,000	11,643,750	10,821,875	4,772,956	-3%	-7%	26%
Cattle Local Quality (Head)	2,283,333	-	-	-	-	-	-	-
Fresh Camel Milk 1 litre	40,600	25,640	28,150	33,750	14,786	32%	20%	-17%
Goat Export Quality (Head)	1,468,533	1,550,667	1,320,000	1,433,333	632,081	-8%	9%	-2%
Goat Local Quality (Head)	1,132,873	1,298,667	1,075,500	1,180,500	520,567	-9%	10%	4%
Other Essential Items								
Charcoal 50kg	196,340	196,000	171,500	176,500	77,746	-10%	3%	-10%
Cowpeas 1 kg	26,957	16,987	16,830	17,200	7,486	1%	2%	-36%
Unskilled Labor Wage Rate	82,986	85,733	86,000	82,500	36,287	-4%	-4%	-1%
Firewood Bundle	29,664	37,600	31,000	32,000	14,014	-15%	3%	8%
Local Sesame Oil 1 litre	95,710	88,200	88,500	88,700	39,022	1%	0%	-7%
Exchange Rate (Somali Shilling per USD)	27,416	20,117	20,728	20,680	9,021	3%	0%	-25%
Terms of Trade								
Labour Wage (Daily)/ Cereal (Rice(Kg))	3	5	5	4	-	-4%	-3%	30%
Local Goat (Head)/ Cereal (Rice(Kg))	47	70	57	64	-	-9%	11%	36%
Camel (Head)/Cereal (Kg)	353	601	619	583	-	-3%	-6%	65%
Price Indices								
Consumer Price Index	-	186	197	227	-	22%	15%	-

Figure 34: Trends in Cereal Prices

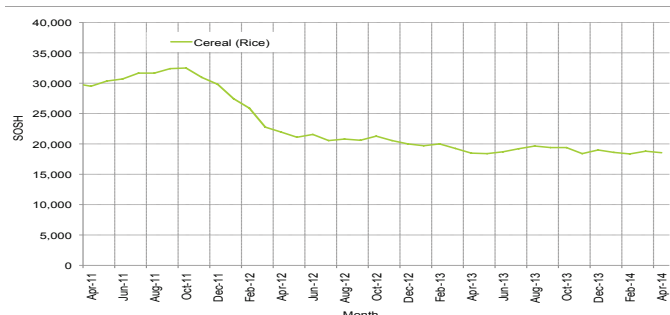


Figure 35: Trends in wage rates and relative purchasing power

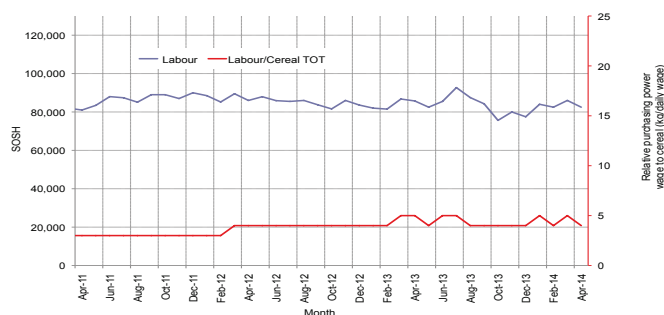


Figure 36: Imported Commodity Prices Compared to Exchange Rate

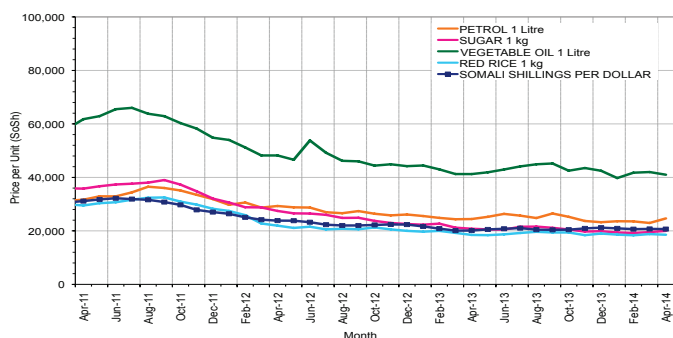


Figure 37: Goat Local Quality

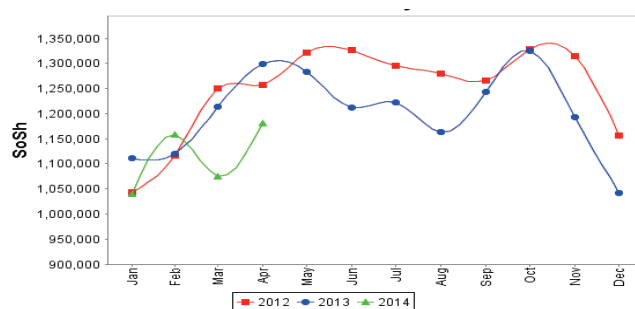


Figure 38: Exchange Rate

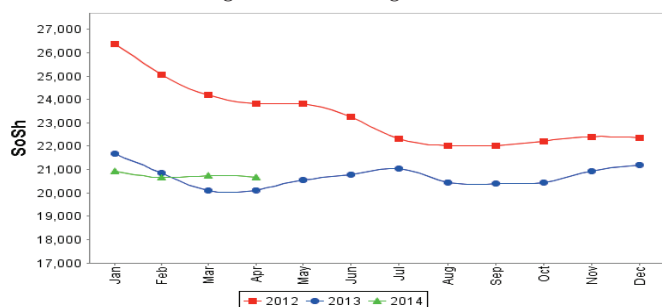
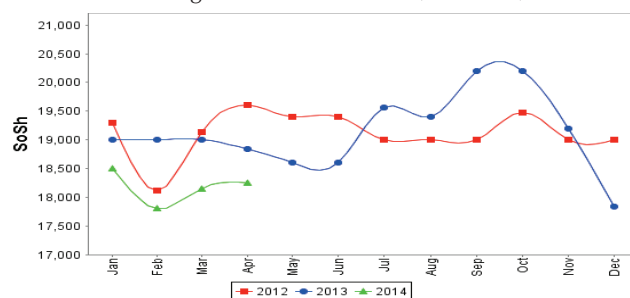


Figure 39: Water Drum (200 litres)



Regional analysis: Northeast Regions

Indicator	5-Year Average (2009-2013)	Apr-13	Mar-14	Apr-14 Nominal Price	Apr-14 Real (Deflated) Price	% Change Same Month Previous Year	% Change Previous Month	% Change 5-year avrg (2009-2013)
Imported Commodities Prices								
Diesel 1 litre	27,296	24,250	22,750	22,438	10,117	-7%	-1%	-18%
Imported Red Rice 1kg	21,020	16,600	14,850	15,000	6,730	-10%	1%	-29%
Petrol 1 litre	24,412	21,150	20,063	20,125	9,064	-5%	0%	-18%
Sugar	24,702	19,500	16,725	17,000	7,641	-13%	2%	-31%
Vegetable Oil 1 litre	43,717	37,350	33,300	33,000	14,926	-12%	-1%	-25%
Wheat Flour 1kg	18,527	15,600	14,833	14,750	6,616	-5%	-1%	-20%
Wheat Grain 1kg	27,175	25,400	22,750	21,500	9,690	-15%	-5%	-21%
Cereal Prices								
Red Sorghum 1kg	20,900	17,800	21,250	21,250	9,576	19%	0%	2%
White Maize 1kg	18,385	18,400	21,000	20,500	9,235	11%	-2%	12%
Livestock & Livestock Product Prices								
Camel Local Quality (Head)	13,618,458	16,960,000	14,673,750	15,150,000	6,898,394	-11%	3%	11%
Cattle Local Quality (Head)	7,250,000	8,100,000	7,400,000	8,125,000	3,699,587	0%	10%	12%
Fresh Camel Milk 1 litre	43,273	38,575	37,375	39,250	17,772	2%	5%	-9%
Goat Export Quality (Head)	1,438,566	1,575,000	1,476,250	1,512,500	688,611	-4%	2%	5%
Goat Local Quality (Head)	1,329,475	1,449,500	1,330,000	1,408,750	641,369	-3%	6%	6%
Other Essential Items								
Charcoal 50kg	322,387	381,000	384,500	383,750	174,639	1%	0%	19%
Cowpeas 1 kg	36,773	30,700	26,167	25,500	11,511	-17%	-3%	-31%
Unskilled Labor Wage Rate	112,625	125,000	130,000	130,000	59,095	4%	0%	15%
Firewood Bundle	36,160	50,000	45,500	45,313	20,533	-9%	0%	25%
Local Sesame Oil 1 litre	92,029	88,500	94,688	96,250	43,727	9%	2%	5%
Exchange Rate (Somali Shilling per USD)	28,044	20,835	20,625	20,688	9,320	-1%	0%	-26%
Terms of Trade								
Labour Wage (Daily)/ Cereal (Rice(Kg))	5	8	9	9	-	15%	-1%	62%
Local Goat (Head)/ Cereal (Rice(Kg))	63	87	90	94	-	8%	5%	48%
Price Indices								
Consumer Price Index	-	211	219	220	-	4%	0%	-

Figure 40: Trends in Cereal Prices

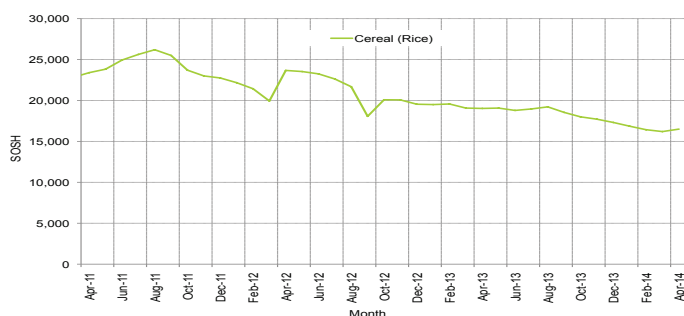


Figure 41: Trends in Wage Rates and Relative Purchasing Power

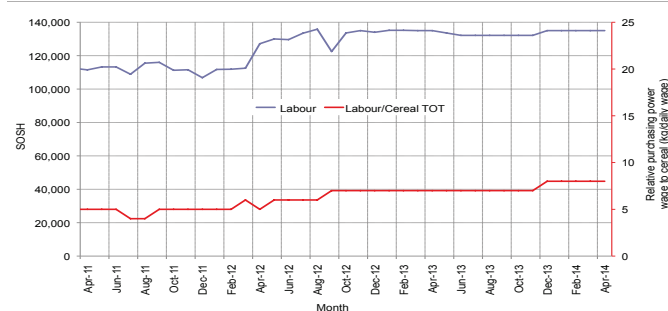


Figure 42: Imported Commodity Prices Compared to Exchange Rate

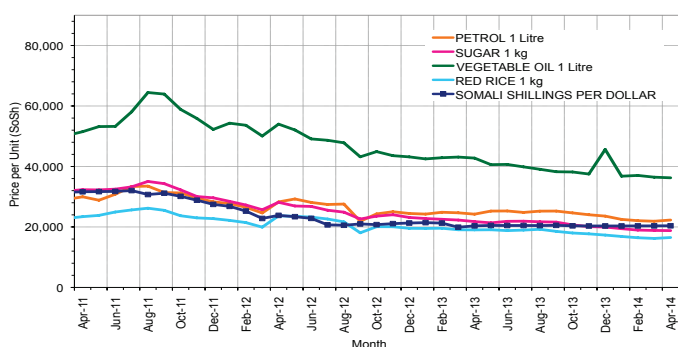


Figure 44: Exchange Rate

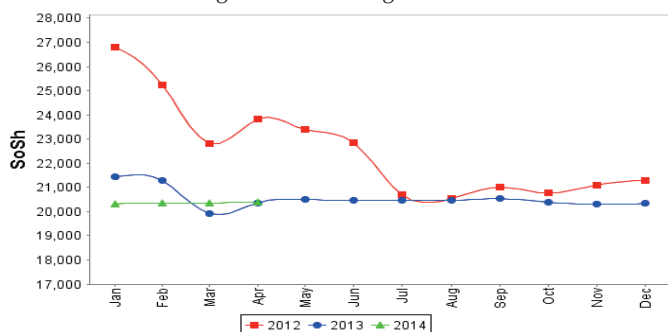


Figure 43: Goat Local Quality

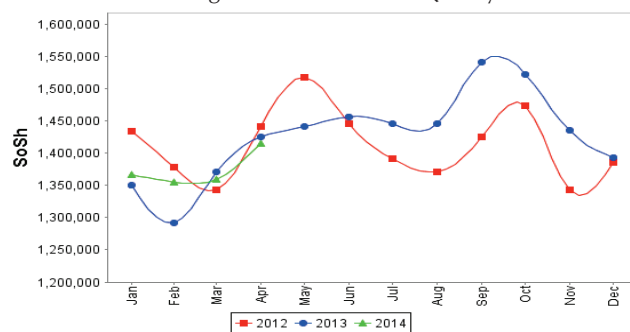
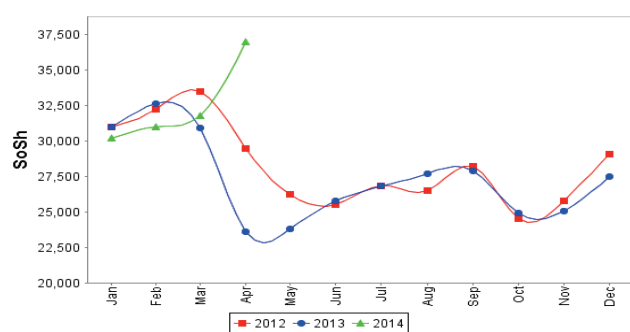


Figure 45: Water Drum (200 litres)



Regional analysis: Northwest Regions

Indicator	5-Year Average (2009-2013)	Apr-13	Mar-14	Apr-14 Nominal Price	Apr-14 Real (Deflated) Price	% Change Same Month Previous Year	% Change Previous Month	% Change 5-year avg (2009-2013)
Imported Commodities Prices								
Diesel 1 litre	5,816	6,990	7,054	6,905	5,141	-1%	-2%	19%
Imported Red Rice 1kg	5,317	5,065	5,120	5,020	3,710	-1%	-2%	-6%
Petrol 1 litre	6,363	7,495	7,348	7,253	5,405	-3%	-1%	14%
Sugar	5,583	5,980	5,860	5,820	4,317	-3%	-1%	4%
Vegetable Oil 1 litre	10,895	12,830	12,100	12,000	9,008	-6%	-1%	10%
Wheat Flour 1kg	4,332	4,620	4,480	4,380	3,224	-5%	-2%	1%
Wheat Grain 1kg	3,392	3,000	3,450	3,575	2,613	19%	4%	5%
Cereal Prices								
White Sorghum 1kg	3,288	3,280	3,848	3,860	2,830	18%	0%	17%
Yellow Maize 1kg	3,300	3,375	3,500	3,395	2,477	1%	-3%	3%
Livestock & Livestock Product Prices								
Camel Local Quality (Head)	2,056,500	2,861,250	3,095,333	3,850,000	2,922,021	35%	24%	87%
Cattle Local Quality (Head)	1,493,275	2,218,458	2,048,000	2,437,500	1,849,944	10%	19%	63%
Fresh Camel Milk 1 litre	5,389	5,900	5,442	5,800	4,302	-2%	7%	8%
Goat Export Quality (Head)	355,820	497,450	488,620	465,300	353,059	-6%	-5%	31%
Goat Local Quality (Head)	267,305	360,700	326,000	346,500	262,891	-4%	6%	30%
Other Essential Items								
Charcoal 50kg	34,424	42,450	52,000	46,950	35,535	11%	-10%	36%
Cowpeas 1 kg	9,385	10,000	9,688	9,138	6,836	-9%	-6%	-3%
Unskilled Labor Wage Rate	34,210	42,300	44,100	48,400	36,635	14%	10%	41%
Firewood Bundle	3,859	3,667	3,500	3,667	2,683	0%	5%	-5%
Local Sesame Oil 1 litre	25,087	29,438	33,813	33,688	25,469	14%	0%	34%
Exchange Rate (Somaliland Shilling per USD)	6,645	6,915	6,930	6,925	5,156	0%	0%	4%
Terms of Trade								
Labour Wage (Daily)/ Cereal (Rice(Kg))	6	8	9	10	-	15%	12%	50%
Local Goat (Head)/ Cereal (Rice(Kg))	50	71	64	69	-	-3%	8%	37%
Price Indices								
Consumer Price Index	-	129	129	132	-	2%	2%	-

Figure 46: Trends in Cereal Prices

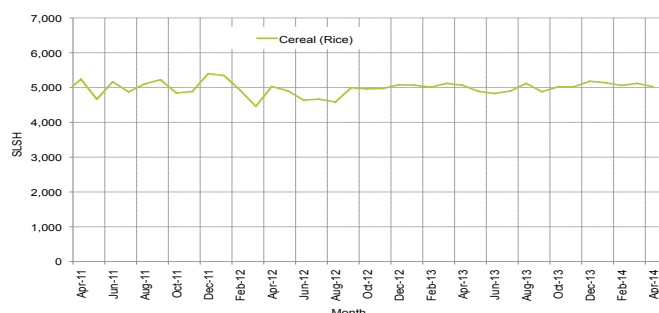


Figure 47: Trends in Wage Rates and Relative Purchasing Power

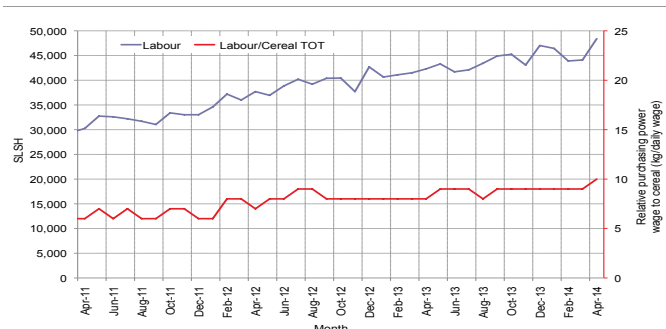


Figure 48: Imported Commodity Prices Compared to Exchange Rate

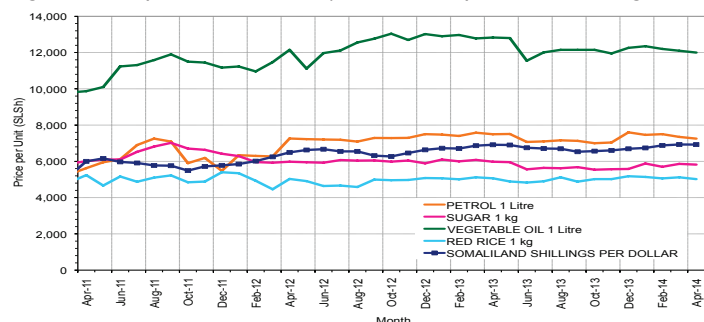


Figure 49: Goat Local Quality

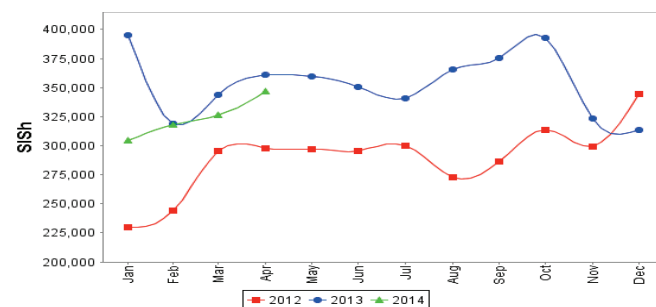


Figure 50: Exchange Rate

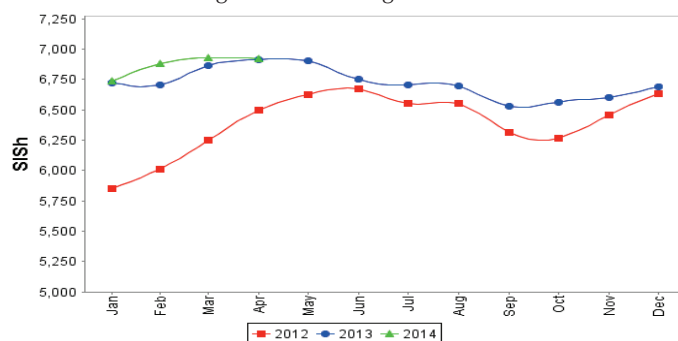
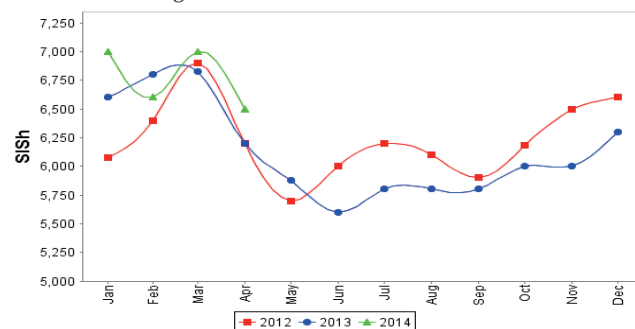


Figure 51: Water Drum (200 litres)



Trends in Livestock Exports

Table 2: Berbera Livestock Exports (Number of Heads)

	1998	1999	2000	2001	2002	2003	2004	2005	2006	2007	2008	2009	2010	2011	2012	2014 (Jan-March)
Shoats	957,224	2,048,136	1,601,083	51,546	341,711	563,107	859,404	1,023,795	1,017,242	1,350,054	1,219,519	1,556,003	2,584,810	3,104,684	3,219,584	452,428
Cattle	92,213	89,967	63,263	20,973	37,547	84,312	131,852	148,151	85,631	88,143	80,051	88,005	133,021	150,934	190,354	59,025
Camel	11,663	37,430	16,984	3,473	18,864	21,874	5,147	5,069	22,810	14,245	26,515	20,206	92,651	107,281	102,664	42,315

Figure 52: Berbera Livestock Exports (Number of Heads)

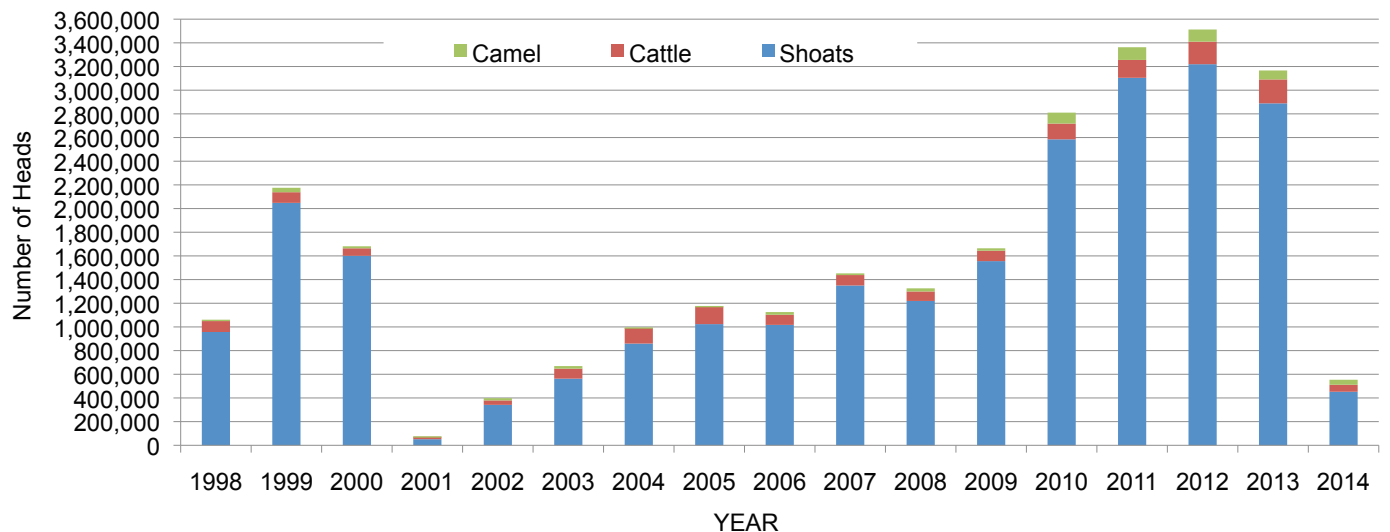
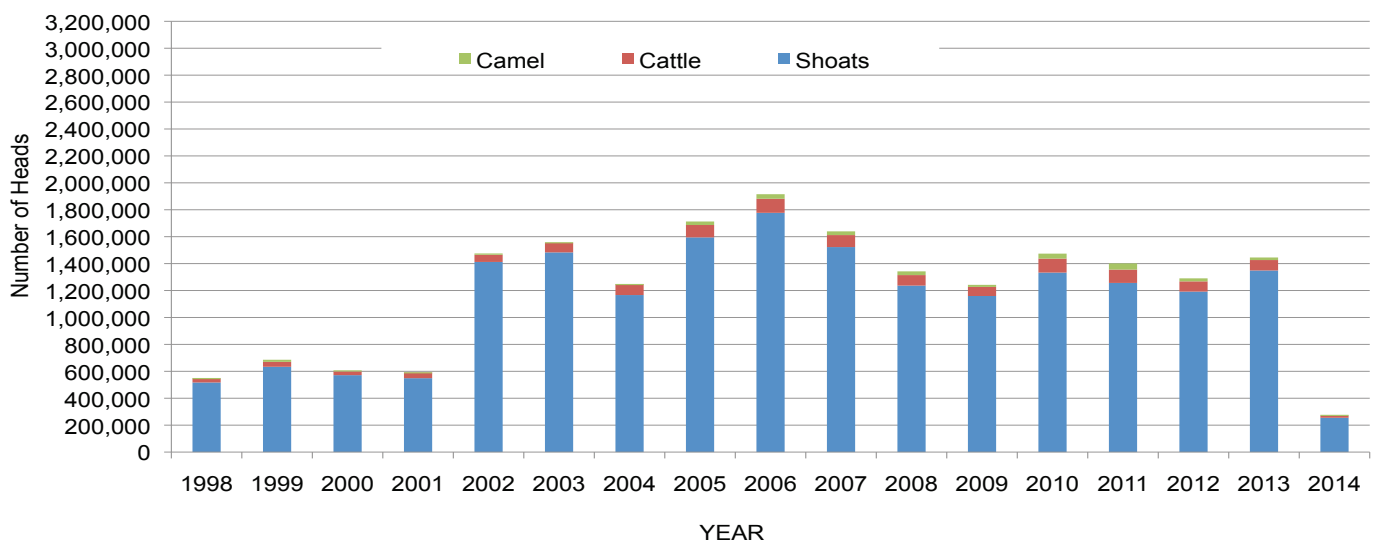


Table 3: Bossaso Livestock Exports (Number of Heads)

	1998	1999	2000	2001	2002	2003	2004	2005	2006	2007	2008	2009	2010	2011	2012	2013	2014 (Jan-March)
Shoats	517,020	633,669	571,455	548,853	1,412,450	1,483,409	1,166,480	1,594,859	1,777,283	1,522,855	1,236,775	1,159,454	1,333,478	1,256,535	1,192,197	1,349,123	254,945
Cattle	29,492	36,586	27,604	42,248	53,313	71,328	79,994	91,910	104,595	89,190	78,046	67,385	103,808	99,058	76,043	77,353	16,131
Camel	3,938	15,544	8,177	1,950	9,720	4,259	2,488	26,109	33,724	27,580	27,639	15,331	36,865	45,878	22,288	19,032	5,861

Figure 53: Bossaso Livestock Exports (Number of Heads)

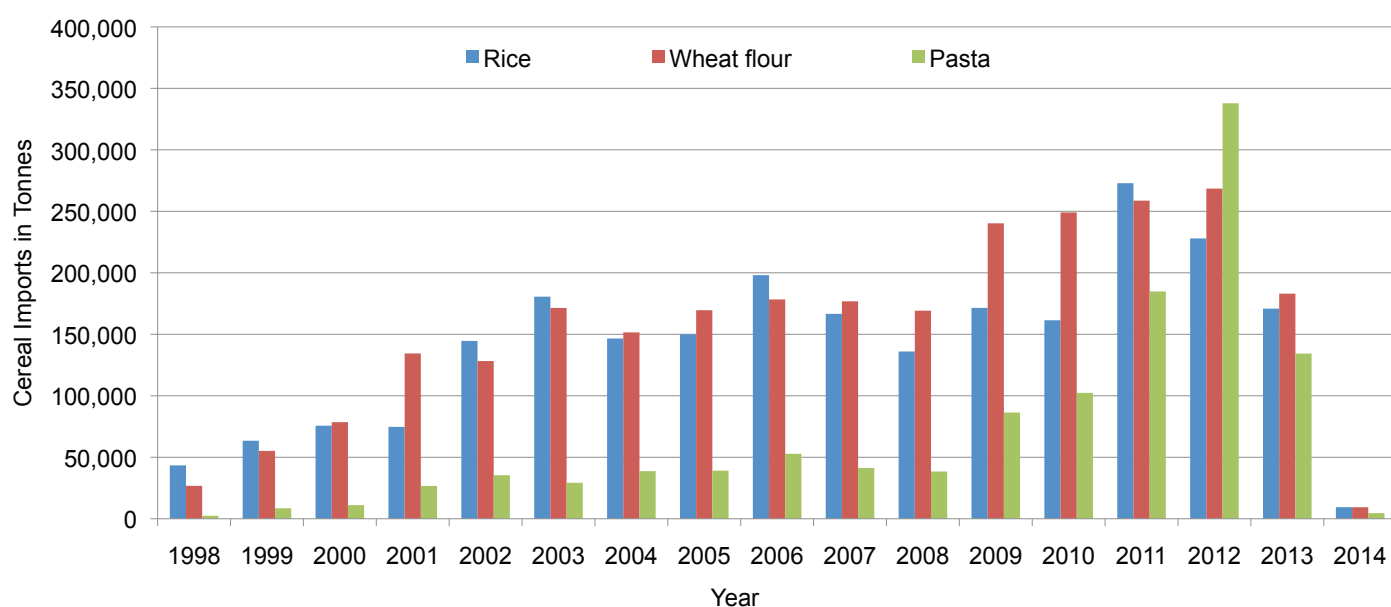


Trends in Cereal Imports

Table 4: Total Cereal Imports through Berbera, Bossaso and Mogadishu Ports (Tonnes)

	1998	1999	2000	2001	2002	2003	2004	2005	2006	2007	2008	2009	2010	2011	2012	2013	2014 (Jan-Mar)
Rice	43,410	63,464	75,687	74,729	144,600	180,614	146,567	150,017	198,101	166,626	136,007	171,472	161,415	272,877	227,955	170,868	40,454
Wheat flour	26,774	55,176	78,555	134,425	128,263	171,442	151,555	169,583	178,345	176,821	169,208	240,247	249,080	258,679	268,491	183,058	52,693
Pasta	2,455	8,544	11,071	26,702	35,425	29,273	38,749	39,153	52,815	41,331	38,441	86,372	102,373	184,849	337,878	134,311	20,575

Figure 54: Total Cereal Imports (Berbera, Bossaso and Mogadishu)



*Mogadishu data is up to March 2013; the data is from Elmaan Port.

*Berbera data is up to March 2014

*Bossaso data is up to March 2014