

Market DataUpdate

April 2013



Food Security and Nutrition
Analysis Unit - Somalia



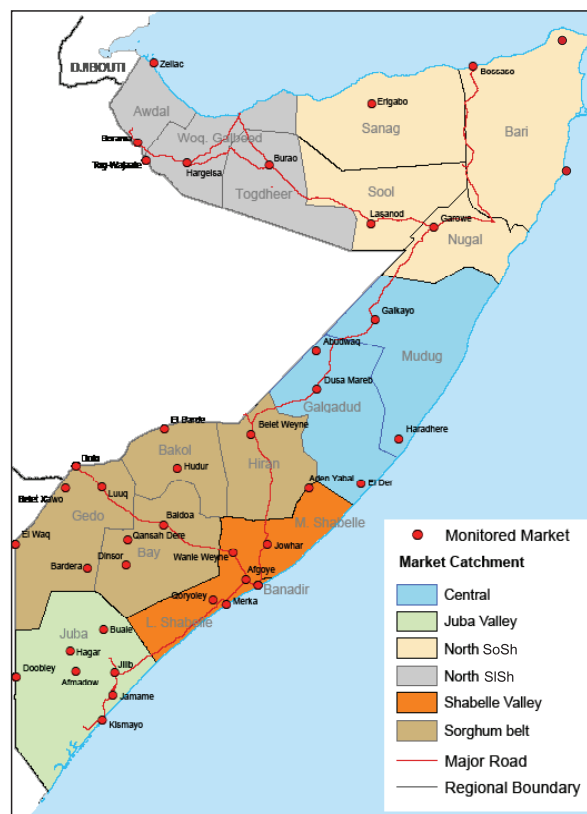
Issued May 24, 2013

Highlights

Inflation: Month-on-month, the Consumer Price Index (CPI) did not change in most regions other than in the North, where it decreased (4-7%). The annual inflation rate remained stable in the South, reduced moderately in the North and shrunk significantly in the Central regions. Compared to the base period (March 2007), the minimum cost of living is significantly elevated in Somali shilling (SoSh) areas but is moderately increased in the Somaliland shilling (SISh) areas.

Exchange rate: The monthly exchange rate between SoSh and the United States Dollar (USD) appreciated or remained stable in most areas, but depreciated in the Juba. Similarly, for the first time in many months, the SISh reversed its weakening trend against the USD, signalling slow absorption of the excess liquidity that was introduced by the printing of higher currency denominations. Compared to 12 months ago, the exchange rate gained value in all regions except in the SISh areas, where it lost some ground as a result of increased money supply. The appreciation of the SoSh is attributable to increased capital inflows into the country, particularly in Mogadishu.

Local grain price monthly trends were mixed. Prices remained stable in Banadir, in Northeast and in Central; decreased in the Northwest, Bakool and Gedo, but increased in Bay, Juba and Shabelle. The appreciation of cereal prices is due to dwindling household stocks, scaling down of the humanitarian food supply and insecurity, as well as the recent rains that have curtailed inland transportation and cereal flows. In the other regions, the depression in cereal prices is due to continued cross-border trade supplies, especially from Ethiopia. Overall, cereal prices remained at lower levels in most markets when compared to the corresponding time last year.



Prices of imported commodities quoted in local currency have experienced downward trends in most of the markets. An exception was a slight increase in Juba due to the recent rains that have made most roads impassable, thereby restricting cargo flows from the ports. Compared to the same period a year ago, imported commodity prices are significantly reduced in nearly all trading centres with the exception of minimal changes in SISh regions. The decline in prices of imported food was mostly driven by local factors.

Livestock prices increased in all areas, month-on-month, due to intensified livestock fattening activities in readiness for the high demand during the upcoming Ramadhan. In addition, most livestock have migrated away from towns to traditional grazing grounds. Increased milk production and supply has seen milk prices go down significantly all over the country. Livestock prices are significantly higher than a year ago in most markets.

Labour wage cost did not change significantly from the previous month's levels. The stability in the labour earnings was mainly due to heavy rains that have restricted mobility. Casual wages are significantly higher compared to their levels a year ago in most markets.

Terms of Trade (ToT) between labour wage and cereals showed mixed trends in April, reducing mainly in key agricultural zones¹, remaining stable in Central and Banadir and increasing in all other areas. Compared to the same month last year, the purchasing power improved in most regions except in the Sorghum Belt where it decreased (Bay, Bakool and Gedo) or remained stable (Hiraan).

¹ Bay, Juba and Shabelle

This Market Data Update is a monthly report that presents analysis of market information and is produced regularly as part of the monthly monitoring process.

The weekly price data is collected from 47 main markets throughout Somalia since 1995.

Market analysis is an integral part of all of FSNAU's Annual Food Security Projections and seasonal technical reports (Technical Reports on FSNAU Post *Gu* and *Deyr* Analysis).

Detailed data is available online on www.fsnau.org/ids.

FSNAU Funding Agencies



Regional Market Highlights

Juba Valley: Prices of all monitored commodities increased month-on-month except for labour wages, which reduced slightly. The ToT (11kg/daily wage rate) was down by 1 kg from the previous month's level. Compared to a year ago, prices are significantly lower for imported food and local cereals, whereas they are considerably elevated for livestock. Annual comparisons of ToT between labour and cereals indicate significant improvement in purchasing power for casual labourers.

Sorghum Belt: Slight monthly reductions were witnessed in the prices of imported food while livestock values went up. The ToT between labor and cereals were mixed: decimated in Bay, increased in Bakool and Gedo, but stabilized in Hiran. Year-on-year price comparisons were mixed as well; imported commodities cost less while local cereal and livestock cost more. Annual changes in the ToT showed downward trends everywhere except in Hiran, where it remained stable.

Shabelle Valley: Monthly prices of imported food reduced slightly while maize and livestock quotations increased. The ToT reduced by 1kg to close the month at 13kg of maize for a day's worth of labor. Compared to the same month last year, prices of imported commodities and cereals are significantly lower while prices of livestock are considerably higher, particularly for cattle and camels.

Central: Relative stability was observed in the monthly price movements for nearly all monitored commodities with the exception of a slight increase in goat prices and a reduction in the cost of milk. Annual comparisons indicate significant decreases in the prices of all items except for camels, which accelerated significantly. ToT is higher when compared to both the preceding month and the same period last year (April '12), currently standing at 70kg of rice/local quality goat.

Northeast: Month-on-month prices remained generally stable for most commodities except for a slight appreciation in goat and camel values. Prices are significantly lower compared to a year ago for most items except for camel and goat export quality grades. ToT (rice/ local goat) improved over the past month (87kg/local goat) and is equally higher when compared to a year ago (April '12).

Northwest: Prices of most monitored commodities were generally stable except for a slight reduction in cereals and milk during April 2013. Compared to 12 months ago, prices of imports were virtually unchanged, while those of cereals declined but livestock quotations increased significantly. ToT between cereal (rice) and local quality goat increased by 4kg month-on-month to reach 71kg/ per goat in April 2013; this is 12kg more than in the same period last year.

Banadir: Monthly prices of imported commodities reduced, local cereals remained stable, and the cost of goat local quality grade increased. Year-on-year price comparisons indicate decreased trends for most of the monitored items. ToT of white maize to labor wage remained at previous month's level, exchanging at 15 kgs/ daily labor rate.

Table 1: ToT between Cereals (kg) and Daily Labour Wage Rate by Regions

Regions	April 2013* (kg of cereals /daily wage rate)	% change from:	
		Previous month (March 2013)	Previous year (April 2012)
Banadir	15	0%	15%
Bay	22	-8%	-4%
Bakool	7	17%	-36%
Gedo	16	7%	-24%
Hiran	14	0%	0%
Juba	11	-8%	22%
Shabelle	13	-7%	30%
Northeast	8	14%	60%
Northwest	13	8%	18%
Central	8	0%	33%

* Cereal types used for ToT calculation: White Maize (Banadir, Hiran, Juba, Shabelle), Red Sorghum (Bay, Bakool, Gedo, Central, Northeast) and White Sorghum (Northwest)

International Market Highlights

Diesel: Free on Board (FoB) crude oil¹ prices in the United Arab Emirates (UAE) traded in April at US \$101.7 per barrel, 4 percent below the previous month's quotations, and notably reduced (13%) compared to the same period last year. According to Oil Market Report (May 2013)², the price decline during the reporting month was on account of seasonally weaker demand.

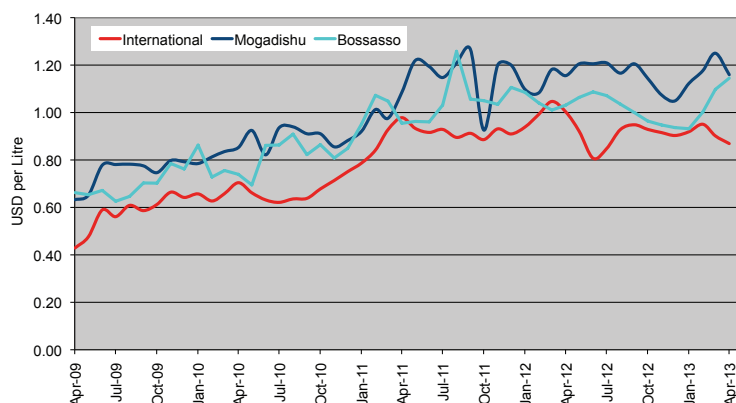
April diesel prices in local currency terms remained unchanged in Mogadishu but increased slightly in Bossaso, signalling the counter effect of banning diesel imports from Yemen by the Regional Government of Puntland. Compared to the corresponding period last year, diesel prices have reduced slightly in Mogadishu but significantly in Bossaso (23%) due to appreciated SoSh and steady sea ports supplies. However, the dollar equivalent price gap between domestically traded diesel and global crude oil widened in both port cities (by 18% in Mogadishu and 29% in Bossaso) over the last twelve months. This trend is attributable to the increased price of diesel in dollar terms (due to local currency appreciation), new port charges³ in Mogadishu and import restrictions in Bossaso (Figure 1).

Rice: The benchmark Thai rice (Thai A1 Super 1/ B) export price remained generally unchanged, quoted at \$551 per tonne in April 2013. This corresponds to a 1 percent reduction since March 2013⁴, and a 1 percentage point increase from the same month in 2012. The slight decline in monthly rice price trend, the second time this year, is due to larger outturns, particularly in China, Vietnam and other consuming economies⁵.

April retail prices of imported rice in Bossaso and Mogadishu remained unchanged but declined remarkably (17% and 40% respectively) year-on-year. The decline was mostly triggered by appreciated Somali shilling against the USD, increased supplies through the ports, and ongoing humanitarian interventions. The gap between international and domestic rice prices (in USD terms) has narrowed down from 63 percent in April last year to 26 percent currently in Mogadishu, and from 47 percent to 39 percent in Bossaso (Figure 2).

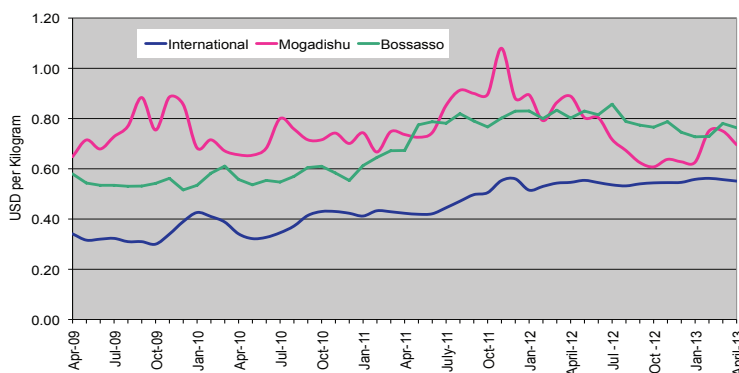
Wheat: The International Grain Council (IGC)⁶ wheat sub-Index reduced by 2 percent month-on-month. The trend was driven by the downward pressure stemming from expectation of larger inventories, which was offset by the upward pressure resulting from concern over the poor growing conditions and spring crop planting delays in the United States⁷. However, year-on-year wheat index was up 8 percentage points compared to the same period last year.

Figure 1: Diesel Prices in Dubai, Mogadishu and Bossaso



Source: FSNAU & FEWSNET Market Price Monitoring System, FAO Statistics, 2013

Figure 2: Rice Prices in Bangkok (FOB), Mogadishu and Bossaso Markets



Source: FSNAU & FEWSNET Market Price Monitoring System, FAO Statistics, 2013

Figure 3: International Wheat Prices



Source: International Grain Council

¹ In Abu Dhabi (Dubai), the main source of Somalia's oil imports.

² Monthly publication by the International Energy Agency (IEA) in collaboration with Organization of Petroleum Exporting Countries (OPEC), released on 14 May 2013; <http://omrpublic.iea.org/>

³ The Port Management is levying 5% development tax on every container landed.

⁴ The World Food Situation: The FAO Food Price Index May 2013 [Online] <http://www.fao.org/worldfoodsituation/wfs-home/foodpricesindex/en/>

⁵ IGC Grain Market Report (GMR 432) – 25 April 2013; <http://www.igc.int/en/downloads/gmrsummary/gmrsumme.pdf>

⁶ Ibid.

⁷ The World Food Situation: The FAO Food Price Index May 2013; IGC Grain Market Report (GMR 432) – 25 April 2013; less than ideal crop conditions supporting a partial recovery from the steep price declines.

International Market Highlights

Wheat flour prices during the reporting month increased slightly in Bossaso, but declined (15%) in Mogadishu. Year-on-year comparisons indicate significant price declines (14% and 30% respectively) in both port markets.

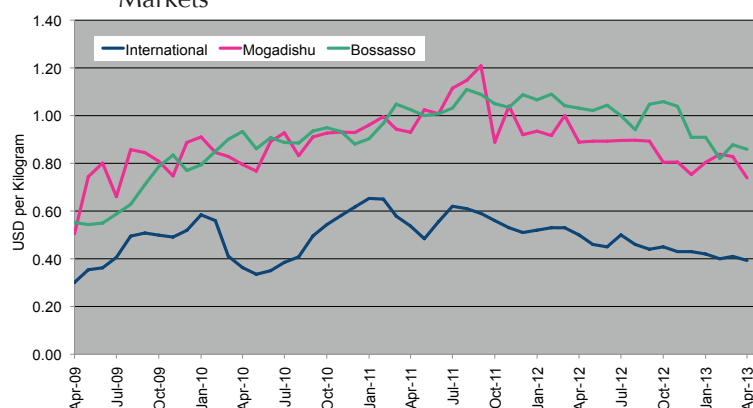
Sugar: The FAO Sugar Price Index⁸ averaged 252.6 points in April, down from 262 points (3.6 percent) in March. After rebounding in March, prices fell sharply in April, mostly on expectation of a significant recovery in cane crop for the new crushing season in Brazil, the world's largest exporter. With larger production of sugar expected to enter the world market and weaker import demand, sugar export prices were put under downward pressure.

Sugar prices were stable in Bossaso but exhibited a slight month-on-month decline in Mogadishu (4%); the prices significantly decreased (27-36%) in both cities when compared to a year ago. The decrease reflects increased port supplies and appreciated domestic currency (Figure 4).

Cooking Oil: The FAO Oils/Fats Price Index⁹ averaged 199.0 points in April, down from 201.1 points in March. The decline was mainly led by the easing of palm and soy oil price trends, supported by abundant stocks and expected acceleration in production and harvests.

Vegetable oil prices decreased month-on-month in Bossaso (5%) and Mogadishu (13%) and are also significantly lower (28-41%) than last year; the latter trend is buoyed by the appreciated SoSh, continued humanitarian interventions and enhanced port supplies.

Figure 4: Sugar Prices: International, Mogadishu and Bossaso Markets



Source: FSNAU & FEWSNET Market Price Monitoring System, International Sugar Organizations, 2013

⁸ The World Food Situation: The FAO Food Price Index May 2013

⁹ Ibid

National Trends: CPI, Exchange Rates, Cereal Prices and Relative Purchasing Power

Figure 5: Terms of Trade Between Wage Rates and Selected Cereals

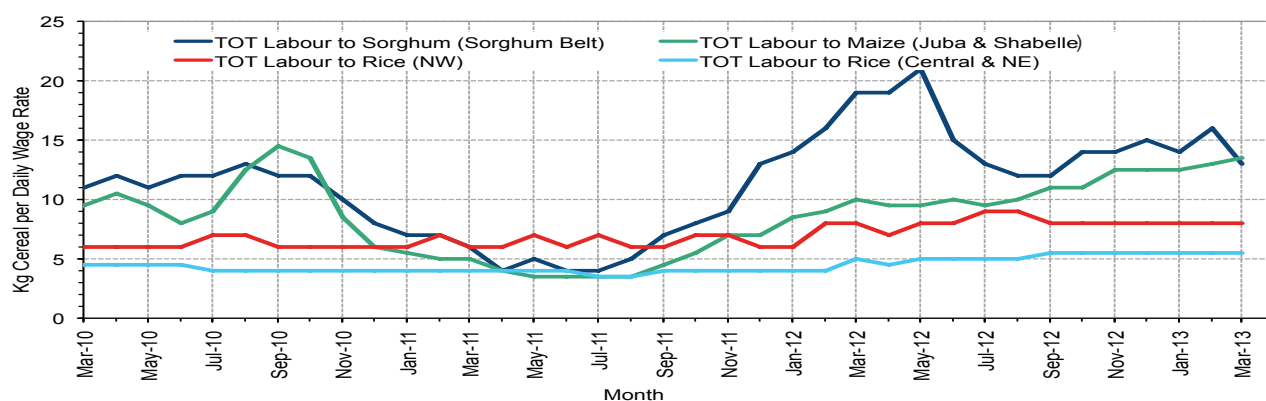


Figure 6: Monthly Exchange Rate for Selected Regions (SoSh and SiSh to USD)

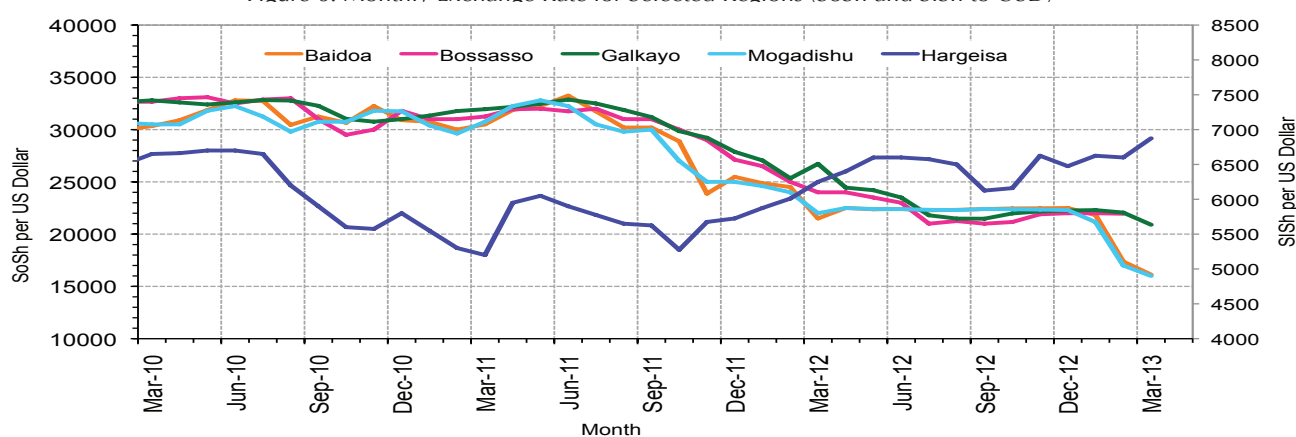


Figure 7: Monthly Trends in Consumer Price Index (CPI, March 2007=100)

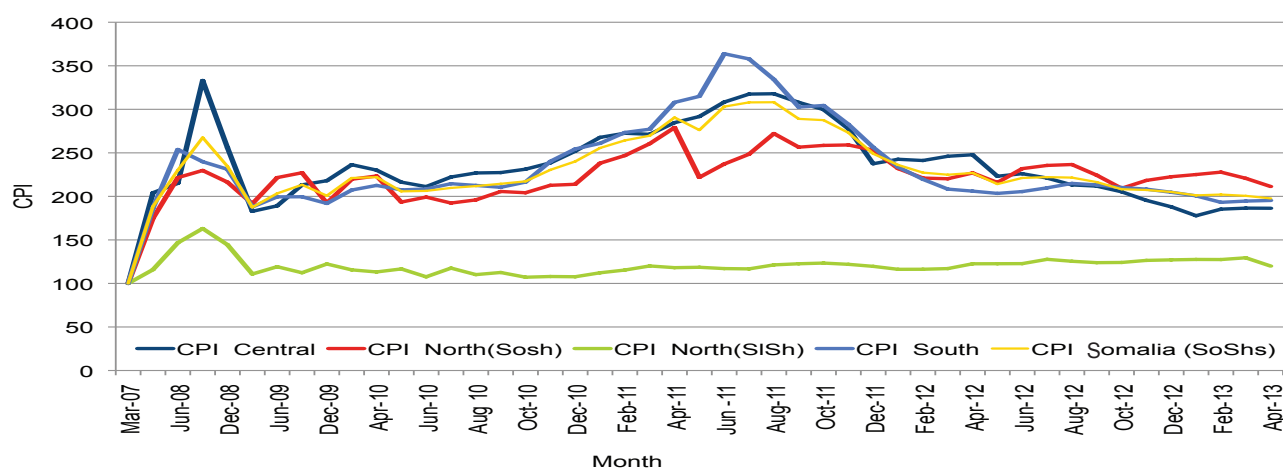
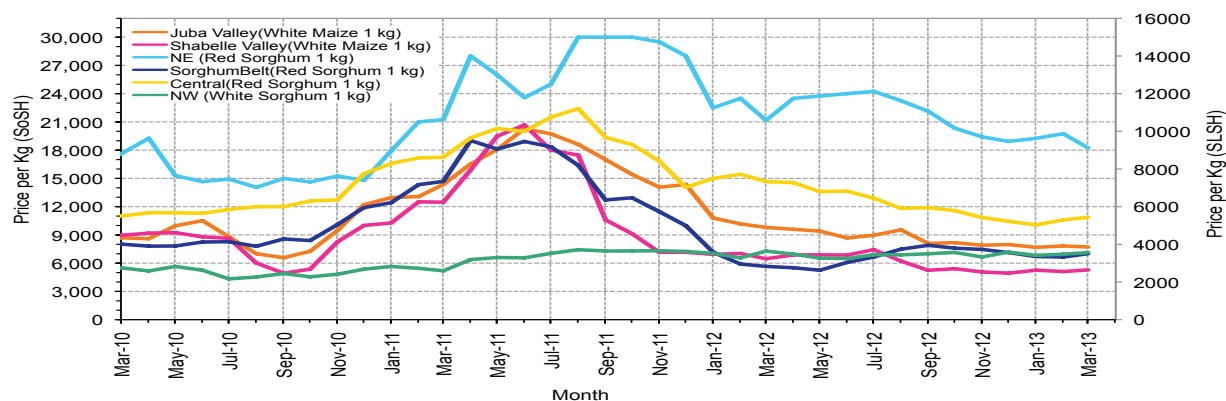


Figure 8: Monthly Trends in Local Cereal Prices



Regional analysis: Juba Regions

Indicator	5-Year Average (2008-2012)	Apr-12	Mar-13	Apr-13 Nominal Price	Apr-13 Real (Deflated) Price	% Change Same Month Previous Year	% Change Previous Month	% Change 5-year avrg (2008-2012)
Imported Commodities Prices								
Diesel 1 litre	31,860	29,407	26,107	28,029	14,250	-5%	7%	-12%
Imported Red Rice 1kg	22,720	18,457	14,643	15,457	7,813	-16%	6%	-32%
Petrol 1 litre	32,273	33,614	26,286	28,114	14,293	-16%	7%	-13%
Sugar	23,928	22,929	15,571	18,714	9,481	-18%	20%	-22%
Vegetable Oil 1 litre	49,107	40,714	30,429	34,071	17,343	-16%	12%	-31%
Wheat Flour 1kg	21,309	17,657	14,179	15,857	8,018	-10%	12%	-26%
Wheat Grain 1kg	15,000	-	-	-	-	-	-	-
Cereal Prices								
Red Sorghum 1kg	8,783	-	6,000	-	-	-	-	-
White Maize 1kg	10,911	9,599	7,964	8,586	4,296	-11%	8%	-21%
Livestock & Livestock Product Prices								
Camel Local Quality (Head)	8,107,097	9,054,152	8,757,714	10,461,048	5,355,559	16%	19%	29%
Cattle Local Quality (Head)	3,191,024	3,303,924	3,877,042	4,036,400	2,066,383	22%	4%	26%
Fresh Camel Milk 1 litre	21,295	21,867	17,107	17,700	8,962	-19%	3%	-17%
Goat Export Quality (Head)	1,163,725	1,488,769	1,353,679	1,635,543	837,236	10%	21%	41%
Goat Local Quality (Head)	739,943	907,574	873,250	1,035,029	529,796	14%	19%	40%
Other Essential Items								
Charcoal 50kg	81,050	91,586	93,821	111,000	56,728	21%	18%	37%
Cowpeas 1 kg	22,133	27,600	19,179	23,286	11,822	-16%	21%	5%
Unskilled Labor Wage Rate	88,223	90,950	96,071	92,929	47,476	2%	-3%	5%
Firewood Bundle	5,753	7,543	9,357	9,764	4,899	29%	4%	70%
Local Sesame Oil 1 litre	69,289	71,921	62,500	69,286	35,372	-4%	11%	0%
Exchange Rate (Somali Shilling per USD)	28,469	22,004	16,475	18,214	9,225	-17%	11%	-36%
Terms of Trade								
Labour Wage (Daily)/ Cereal (Maize(Kg))	8	9	12	11	-	14%	-10%	34%
Local Goat (Head)/ Cereal (Maize(Kg))	68	95	110	121	-	27%	10%	78%
Price Indices								
Consumer Price Index	-	206	195	195	-	-5%	0%	-

Figure 9: Trends in Cereal Prices

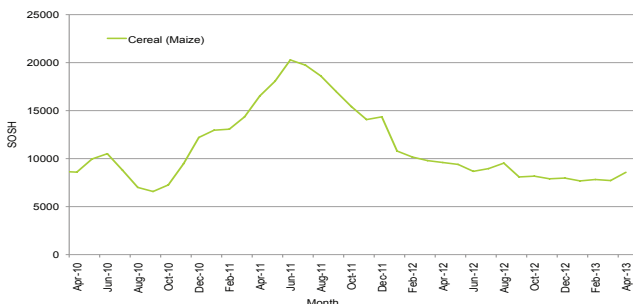


Figure 10: Trends in Wage Rates and Relative Purchasing Power

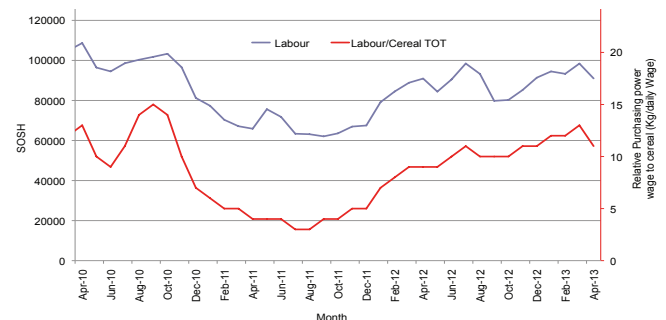


Figure 11: Imported Commodity Prices Compared to Exchange Rate

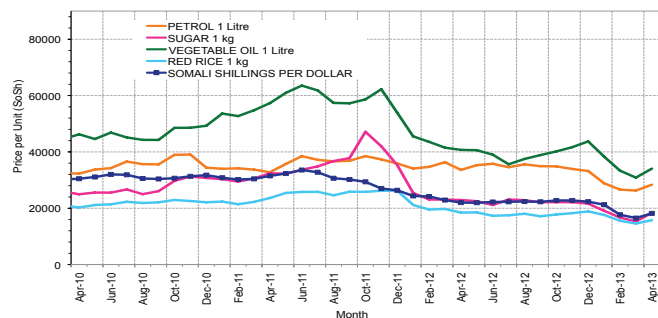


Figure 12: Goat Local Quality

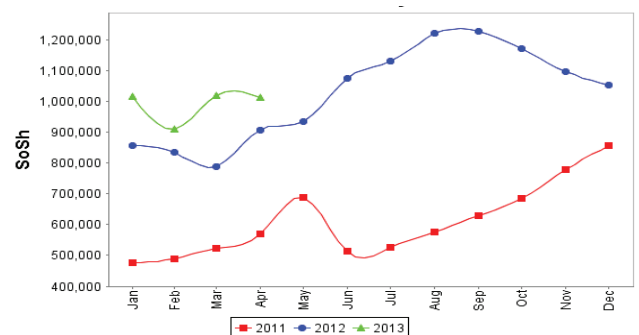
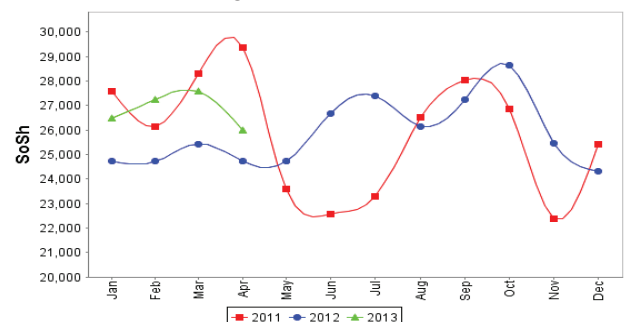


Figure 13: Exchange Rate



Figure 14: Water Drum



Regional analysis: Sorghum Belt Regions (Bay, Bakool, Gedo and Hiran)

Indicator	5-Year Average (2008-2012)	Apr-12	Mar-13	Apr-13 Nominal Price	Apr-13 Real (Deflated) Price	% Change Same Month Previous Year	% Change Previous Month	% Change 5-year avrg (2008-2012)
Imported Commodities Prices								
Diesel 1 litre	32,914	34,027	28,159	28,559	14,521	-16%	1%	-13%
Imported Red Rice 1kg	24,784	20,177	17,386	17,045	8,626	-16%	-2%	-31%
Petrol 1 litre	31,762	33,477	28,591	30,145	15,333	-10%	5%	-5%
Sugar	25,227	25,068	18,545	18,309	9,274	-27%	-1%	-27%
Vegetable Oil 1 litre	48,104	43,477	42,023	40,859	20,818	-6%	-3%	-15%
Wheat Flour 1kg	21,664	18,850	15,659	15,055	7,608	-20%	-4%	-31%
Wheat Grain 1kg	11,072	6,675	8,750	8,550	4,277	28%	-2%	-23%
Cereal Prices								
Red Sorghum 1kg	9,470	5,513	7,005	6,550	3,253	19%	-6%	-31%
White Maize 1kg	11,018	7,068	7,579	8,505	4,254	20%	12%	-23%
Livestock & Livestock Product Prices								
Camel Local Quality (Head)	8,215,666	11,858,333	12,126,439	12,701,364	6,502,516	7%	5%	55%
Cattle Local Quality (Head)	2,868,875	3,420,000	3,272,656	3,562,500	1,823,765	4%	9%	24%
Fresh Camel Milk 1 litre	22,081	25,409	17,670	12,336	6,216	-51%	-30%	-44%
Goat Export Quality (Head)	1,187,882	1,586,818	1,561,045	1,583,245	810,461	0%	1%	33%
Goat Local Quality (Head)	743,120	1,138,409	1,027,818	1,077,545	551,562	-5%	5%	45%
Other Essential Items								
Charcoal 50kg	124,518	165,409	157,386	150,659	77,032	-9%	-4%	21%
Cowpeas 1 kg	25,593	24,542	17,417	17,950	9,090	-27%	3%	-30%
Unskilled Labor Wage Rate	87,913	106,364	92,023	95,068	48,571	-11%	3%	8%
Firewood Bundle	5,100	6,364	6,455	6,455	3,205	1%	0%	27%
Local Sesame Oil 1 litre	72,934	70,708	67,500	69,607	35,536	-2%	3%	-5%
Exchange Rate (Somali Shilling per USD)	28,542	22,843	18,674	18,679	9,463	-18%	0%	-35%
Terms of Trade								
Labour Wage (Daily)/ Cereal (Sorghum(Kg))	9	19	13	15	-	-25%	10%	56%
Local Goat (Head)/ Cereal (Sorghum(Kg))	78	206	147	165	-	-20%	12%	110%
Price Indices								
Consumer Price Index	-	206	195	195	-	-5%	0%	-

Figure 15: Trends in Cereal Prices

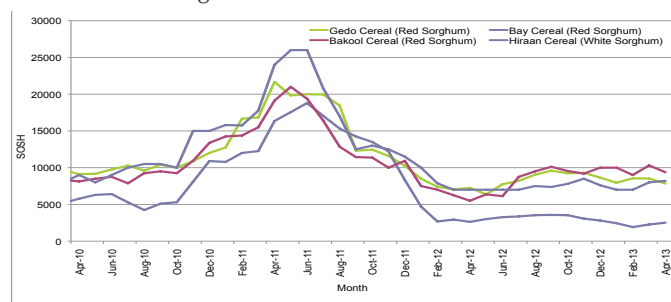


Figure 16: Trends in Wage Rates and Relative Purchasing Power

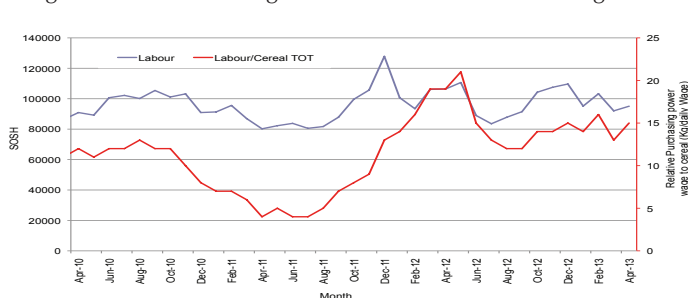


Figure 17: Imported Commodity Prices Compared to Exchange Rate

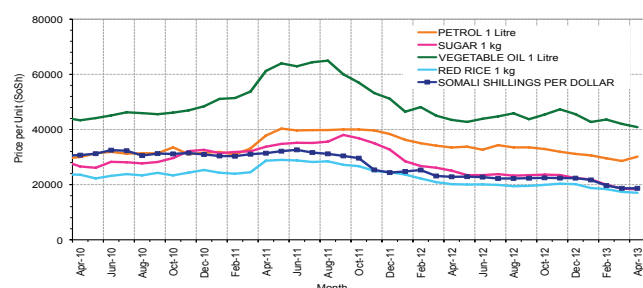


Figure 18: Goat Local Quality

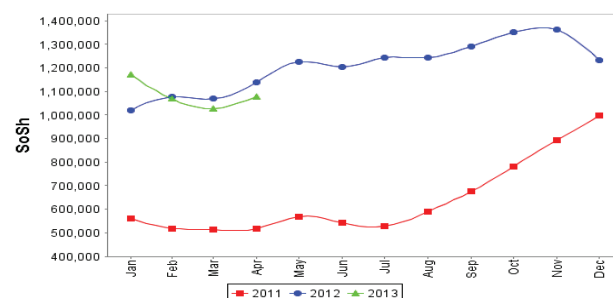


Figure 19: Exchange Rate

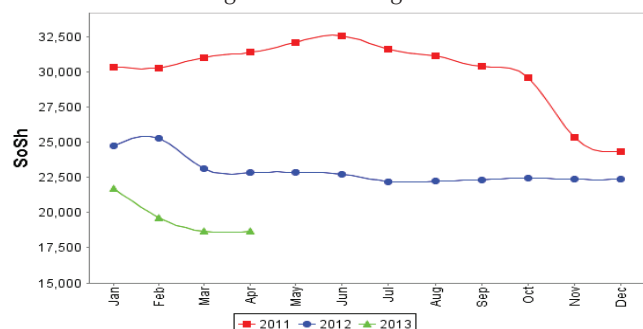
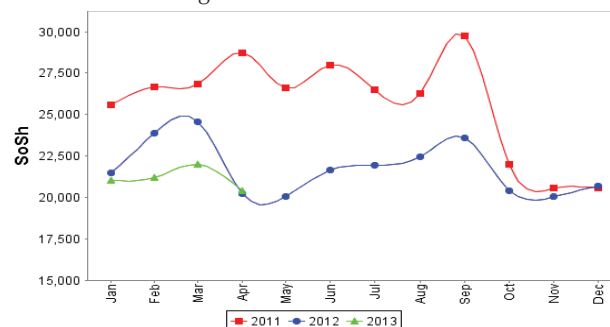


Figure 20: Water Drum



Regional analysis: Shabelle Regions

Indicator	5-Year Average (2008-2012)	Apr-12	Mar-13	Apr-13 Nominal Price	Apr-13 Real (Deflated) Price	% Change Same Month Previous Year	% Change Previous Month	% Change 5-year avrg (2008-2012)
Imported Commodities Prices								
Diesel 1 litre	30,586	29,875	25,250	24,667	12,529	-17%	-2%	-19%
Imported Red Rice 1kg	21,673	17,208	14,250	14,000	7,067	-19%	-2%	-35%
Petrol 1 litre	29,614	32,042	26,667	26,833	13,637	-16%	1%	-9%
Sugar	23,094	21,875	15,417	15,000	7,579	-31%	-3%	-35%
Vegetable Oil 1 litre	39,875	34,667	24,083	24,233	12,306	-30%	1%	-39%
Wheat Flour 1kg	19,122	15,917	13,792	13,833	6,982	-13%	0%	-28%
Wheat Grain 1kg	9,250	9,250	5,167	4,133	2,016	-55%	-20%	-55%
Cereal Prices								
Red Sorghum 1kg	9,677	8,846	9,280	9,912	4,975	12%	7%	2%
White Maize 1kg	9,896	6,873	5,286	5,565	2,749	-19%	5%	-44%
Livestock & Livestock Product Prices								
Camel Local Quality (Head)	10,704,100	14,627,500	16,390,000	18,265,000	9,350,886	25%	11%	71%
Cattle Local Quality (Head)	3,339,000	4,230,000	6,090,000	6,200,000	3,174,065	47%	2%	86%
Fresh Camel Milk 1 litre	18,425	18,917	14,896	18,117	9,175	-4%	22%	-2%
Goat Export Quality (Head)	1,339,633	1,891,875	1,857,500	1,770,500	906,329	-6%	-5%	32%
Goat Local Quality (Head)	925,444	1,287,500	1,306,667	1,314,333	672,789	2%	1%	42%
Other Essential Items								
Charcoal 50kg	104,693	129,903	140,000	133,856	68,429	3%	-4%	28%
Cowpeas 1 kg	23,697	24,793	15,547	16,890	8,547	-32%	9%	-29%
Unskilled Labor Wage Rate	57,277	69,583	71,458	70,167	35,823	1%	-2%	23%
Firewood Bundle	4,037	5,750	6,042	6,833	3,398	19%	13%	69%
Local Sesame Oil 1 litre	58,336	45,958	54,417	58,667	29,935	28%	8%	1%
Exchange Rate (Somali Shilling per USD)	29,118	22,504	17,088	17,818	9,022	-21%	4%	-39%
Terms of Trade								
Labour Wage (Daily)/ Cereal (Maize(Kg))	6	10	14	13	-	25%	-7%	118%
Local Goat (Head)/ Cereal (Maize(Kg))	94	187	247	236	-	26%	-4%	153%
Price Indices								
Consumer Price Index	-	206	195	195	-	-5%	0%	-

Figure 21: Trends in Cereal Prices

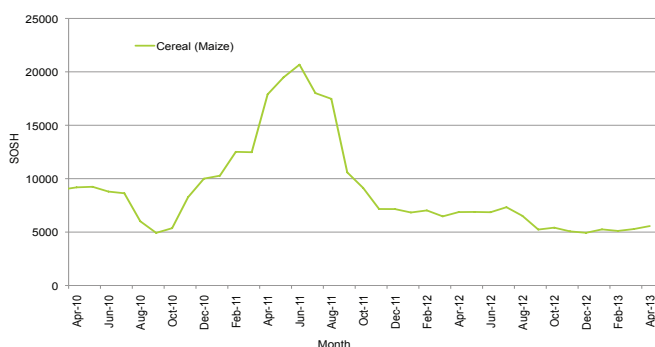


Figure 22: Trends in Wage Rates and Relative Purchasing Power

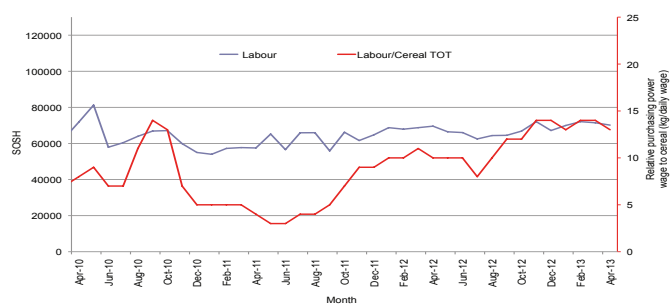


Figure 23: Imported Commodity Prices Compared to Exchange Rate

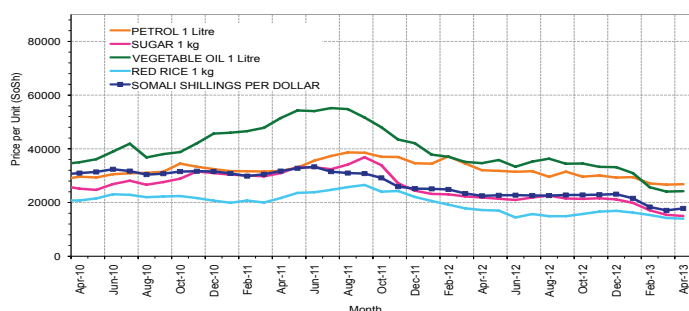


Figure 25: Exchange Rate

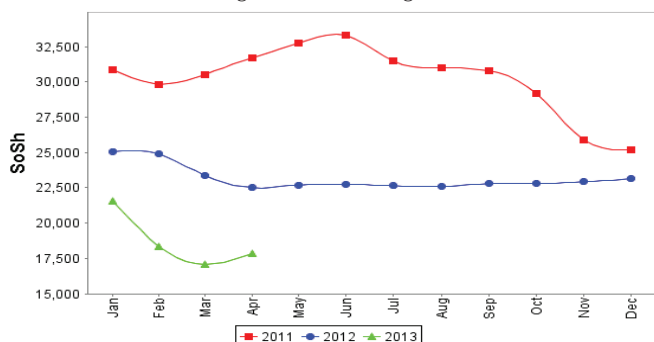


Figure 24: Goat Local Quality

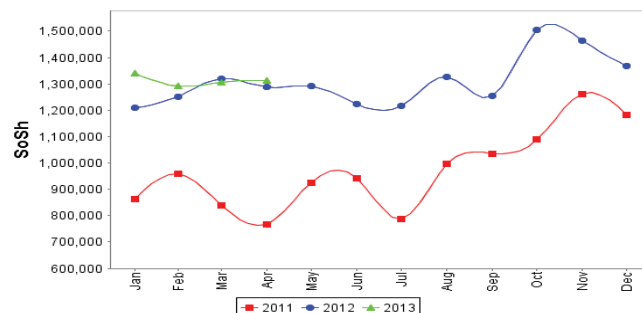
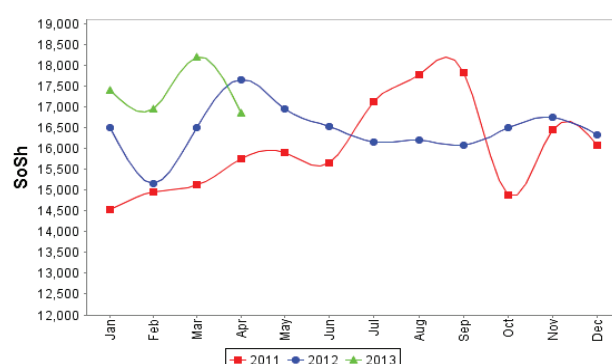


Figure 26: Water Drum



Regional analysis: Banadir Region

Indicator	5-Year Average (2008-2012)	Apr-12	Mar-13	Apr-13 Nominal Price	Apr-13 Real (Deflated) Price	% Change Same Month Previous Year	% Change Previous Month	% Change 5-year avrg (2008-2012)
Imported Commodities Prices								
Diesel 1 litre	26,939	26,188	17,875	18,458	9,350	-30%	3%	-31%
Imported Red Rice 1kg	21,344	17,396	12,625	11,813	5,948	-32%	-6%	-45%
Petrol 1 litre	26,858	28,700	18,000	18,354	9,297	-36%	2%	-32%
Sugar	21,008	20,125	13,729	13,000	6,556	-35%	-5%	-38%
Vegetable Oil 1 litre	39,168	34,958	25,208	22,458	11,398	-36%	-11%	-43%
Wheat Flour 1kg	17,083	12,917	11,813	11,167	5,617	-14%	-5%	-35%
Wheat Grain 1kg	12,100	9,300	9,138	8,248	4,123	-11%	-10%	-32%
Cereal Prices								
Red Sorghum 1kg	9,208	6,154	5,288	5,171	2,547	-16%	-2%	-44%
White Maize 1kg	10,492	7,700	6,391	6,460	3,207	-16%	1%	-38%
Livestock & Livestock Product Prices								
Camel Local Quality (Head)	13,690,625	-	-	-	-	-	-	-
Cattle Local Quality (Head)	4,468,750	-	-	-	-	-	-	-
Fresh Camel Milk 1 litre	18,693	19,167	20,167	20,167	10,225	5%	0%	8%
Goat Export Quality (Head)	1,675,000	2,200,000	2,250,000	2,175,000	1,113,417	-1%	-3%	-
Goat Local Quality (Head)	1,395,500	2,018,750	1,584,125	1,971,875	1,009,425	-2%	24%	41%
Other Essential Items								
Charcoal 50kg	154,209	179,688	179,792	187,000	95,637	4%	4%	21%
Cowpeas 1 kg	20,766	20,642	12,900	13,167	6,641	-36%	2%	-37%
Unskilled Labor Wage Rate	64,758	103,750	96,667	100,000	51,096	-4%	3%	54%
Firewood Bundle	25,464	7,333	7,100	7,000	3,484	-5%	-1%	-73%
Local Sesame Oil 1 litre	63,310	53,458	47,042	53,292	27,183	0%	13%	-16%
Exchange Rate (Somali Shilling per USD)	28,979	22,275	15,904	17,163	8,687	-23%	8%	-41%
Terms of Trade								
Labour Wage (Daily)/ Cereal (Maize(Kg))	6	13	15	15	-	15%	2%	151%
Local Goat (Head)/ Cereal (Maize(Kg))	133	262	248	305	-	16%	23%	129%
Price Indices								
Consumer Price Index	-	206	195	195	-	-5%	0%	-

Figure 27: Trends in Cereal Prices

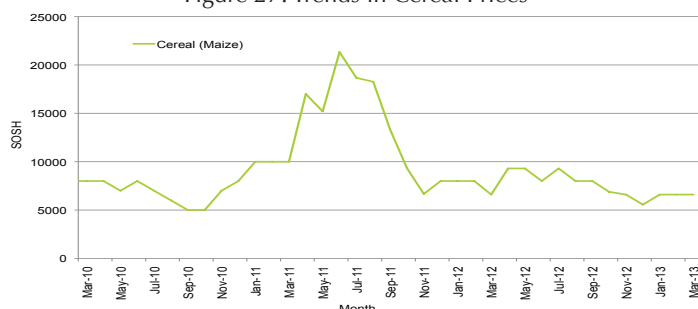


Figure 28: Bakara: Trends in Wage Rates and Relative Purchasing Power

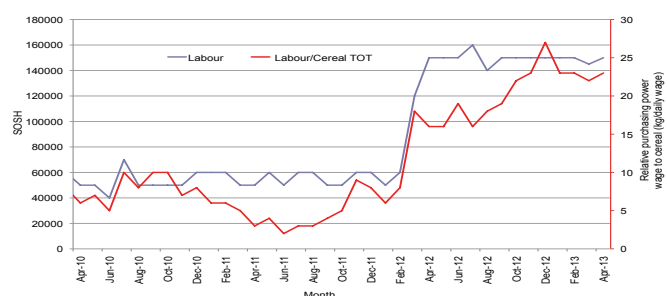


Figure 29: Imported Commodity Prices Compared to Exchange Rate

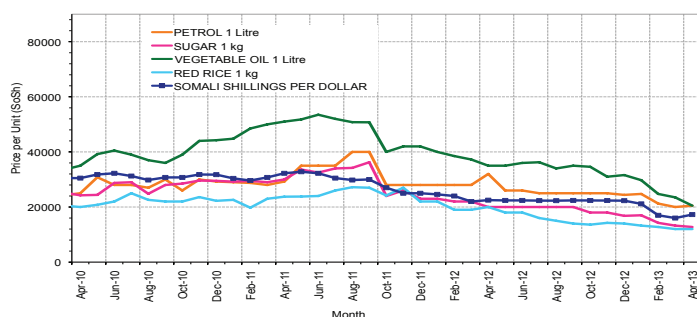


Figure 31: Exchange Rate

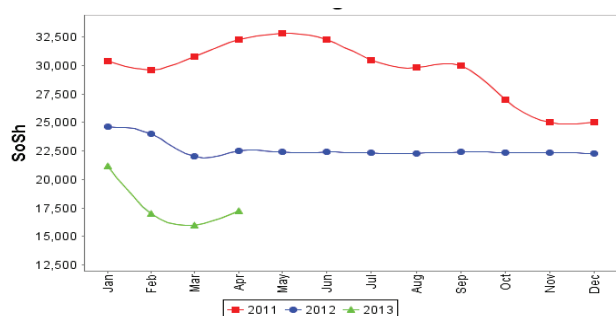


Figure 30: Goat Local Quality

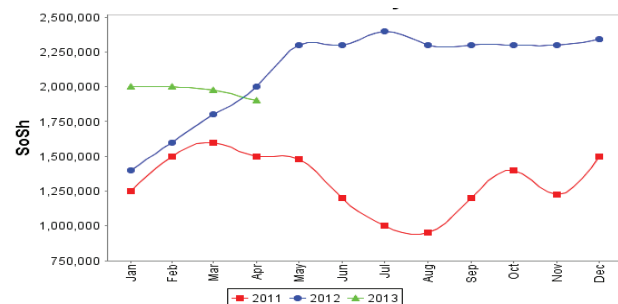
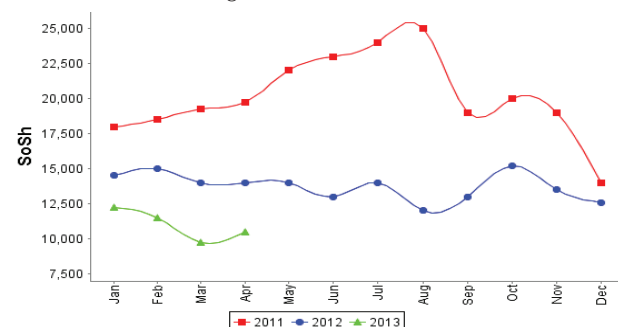


Figure 32: Wheat Flour



Regional analysis: Central Regions

Indicator	5-Year Average (2008-2012)	Apr-12	Mar-13	Apr-13 Nominal Price	Apr-13 Real (Deflated) Price	% Change Same Month Previous Year	% Change Previous Month	% Change 5-year avg (2008-2012)
Imported Commodities Prices								
Diesel 1 litre	31,226	32,850	27,300	26,680	14,216	-19%	-2%	-15%
Imported Red Rice 1kg	25,780	21,950	19,250	18,480	9,816	-16%	-4%	-28%
Petrol 1 litre	27,170	29,300	24,350	24,427	13,007	-17%	0%	-10%
Sugar	26,888	27,450	21,200	20,787	11,054	-24%	-2%	-23%
Vegetable Oil 1 litre	53,612	48,200	41,250	41,240	22,029	-14%	0%	-23%
Wheat Flour 1kg	21,770	18,300	16,400	16,280	8,636	-11%	-1%	-25%
Wheat Grain 1kg	18,146	16,667	13,375	13,183	6,974	-21%	-1%	-27%
Cereal Prices								
Red Sorghum 1kg	12,832	14,550	10,800	10,940	5,770	-25%	1%	-15%
White Maize 1kg	13,429	13,900	10,000	10,100	5,319	-27%	1%	-25%
Livestock & Livestock Product Prices								
Camel Local Quality (Head)	7,013,666	8,762,500	11,031,250	11,100,000	5,955,956	27%	1%	58%
Cattle Local Quality (Head)	2,095,833	2,500,000	2,650,000	-	-	-	-	-
Fresh Camel Milk 1 litre	42,602	38,250	26,900	25,640	13,658	-33%	-5%	-40%
Goat Export Quality (Head)	1,300,150	1,550,000	1,489,500	1,550,667	831,959	0%	4%	19%
Goat Local Quality (Head)	963,940	1,257,500	1,213,500	1,298,667	696,741	3%	7%	35%
Other Essential Items								
Charcoal 50kg	176,490	181,500	189,000	196,000	105,070	8%	4%	11%
Cowpeas 1 kg	28,690	29,600	17,050	16,987	9,015	-43%	0%	-41%
Unskilled Labor Wage Rate	75,540	86,000	86,750	85,733	45,903	0%	-1%	13%
Firewood Bundle	24,294	33,000	36,600	37,600	20,075	14%	3%	55%
Local Sesame Oil 1 litre	93,225	92,000	86,750	88,200	47,227	-4%	2%	-5%
Exchange Rate (Somali Shilling per USD)	29,157	23,835	20,095	20,117	10,694	-16%	0%	-31%
Terms of Trade								
Labour Wage (Daily)/ Cereal (Rice(Kg))	3	4	5	5	-	18%	3%	58%
Local Goat (Head)/ Cereal (Rice(Kg))	37	57	63	70	-	23%	11%	88%
Camel (Head)/Cereal (Kg)	272	399	573	601	-	50%	5%	121%
Price Indices								
Consumer Price Index	-	248	187	186	-	-25%	0%	-

Figure 33: Trends in Cereal Prices

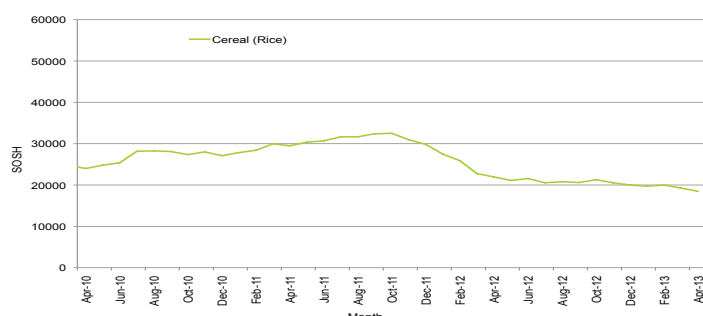


Figure 34: Trends in wage rates and relative purchasing power

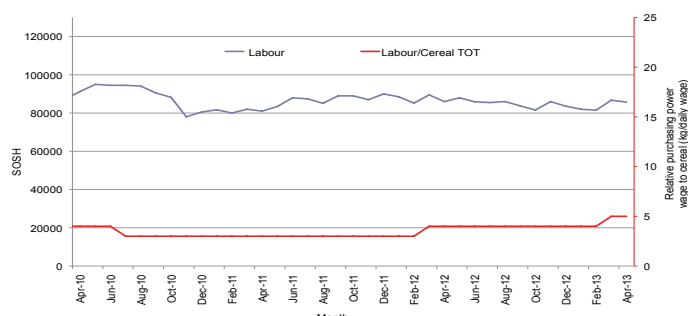


Figure 35: Imported Commodity Prices Compared to Exchange Rate

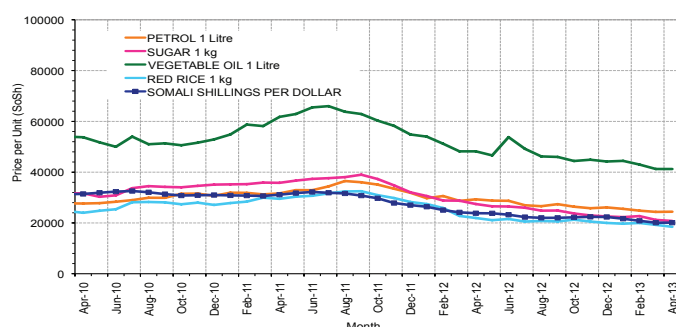


Figure 36: Goat Local Quality

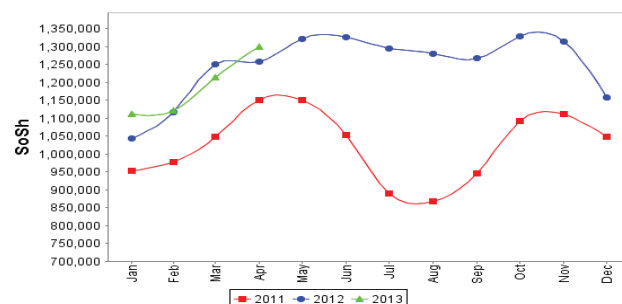


Figure 37: Exchange Rate

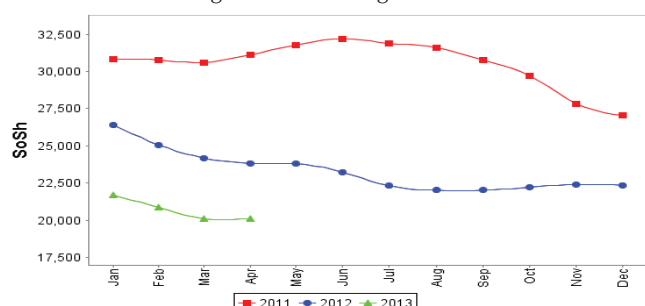
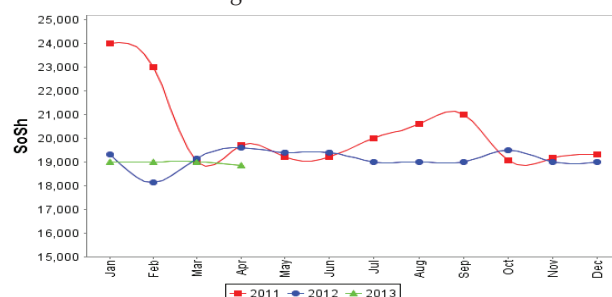


Figure 38: Water Drum



Regional analysis: Northeast Regions

Indicator	5-Year Average (2008-2012)	Apr-12	Mar-13	Apr-13 Nominal Price	Apr-13 Real (Deflated) Price	% Change Same Month Previous Year	% Change Previous Month	% Change 5-year avrg (2008-2012)
Imported Commodities Prices								
Diesel 1 litre	27,959	28,375	24,438	24,250	11,374	-15%	-1%	-13%
Imported Red Rice 1kg	22,375	20,876	16,188	16,600	7,754	-20%	3%	-26%
Petrol 1 litre	24,826	25,688	21,938	21,150	9,907	-18%	-4%	-15%
Sugar	24,215	26,063	19,750	19,500	9,126	-25%	-1%	-19%
Vegetable Oil 1 litre	44,472	49,500	37,938	37,350	17,572	-25%	-2%	-16%
Wheat Flour 1kg	20,095	18,438	15,625	15,600	7,281	-15%	0%	-22%
Wheat Grain 1kg	26,095	25,125	25,250	25,400	11,918	1%	1%	-3%
Cereal Prices								
Red Sorghum 1kg	20,502	23,500	18,250	17,800	8,322	-24%	-2%	-13%
White Maize 1kg	17,255	19,000	18,000	18,400	8,606	-3%	2%	7%
Livestock & Livestock Product Prices								
Camel Local Quality (Head)	11,871,458	15,240,625	15,987,500	16,960,000	8,024,403	11%	6%	43%
Cattle Local Quality (Head)	6,650,000	8,375,000	8,750,000	8,100,000	3,832,357	-3%	-7%	22%
Fresh Camel Milk 1 litre	41,255	42,250	40,938	38,575	18,151	-9%	-6%	-6%
Goat Export Quality (Head)	1,296,566	1,462,500	1,481,250	1,575,000	745,100	8%	6%	21%
Goat Local Quality (Head)	1,202,700	1,485,000	1,361,875	1,449,500	685,721	-2%	6%	21%
Other Essential Items								
Charcoal 50kg	279,687	365,000	286,250	291,000	137,585	-20%	2%	4%
Cowpeas 1 kg	35,620	46,333	29,833	30,700	14,425	-34%	3%	-14%
Unskilled Labor Wage Rate	100,437	112,500	125,000	125,000	59,043	11%	0%	24%
Firewood Bundle	29,035	39,500	48,125	50,000	23,557	27%	4%	72%
Local Sesame Oil 1 litre	90,545	96,875	86,875	88,500	41,773	-9%	2%	-2%
Exchange Rate (Somali Shilling per USD)	29,792	24,250	20,281	20,835	9,758	-14%	3%	-30%
Terms of Trade								
Labour Wage (Daily)/ Cereal (Rice(Kg))	4	5	8	8	-	40%	-2%	68%
Local Goat (Head)/ Cereal (Rice(Kg))	54	71	84	87	-	23%	4%	62%
Price Indices								
Consumer Price Index	-	227	221	211	-	-7%	-4%	-

Figure 39: Trends in Cereal Prices

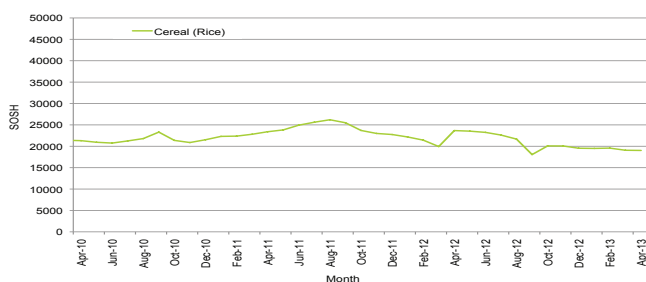


Figure 40: Trends in Wage Rates and Relative Purchasing Power

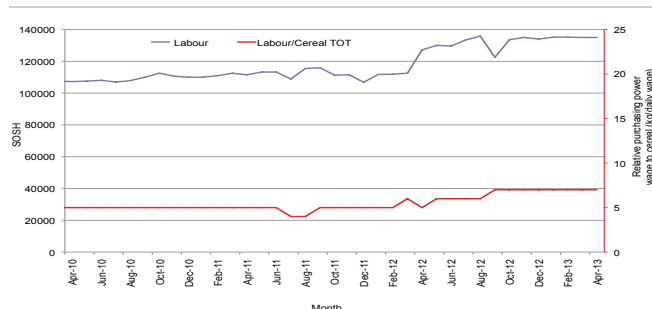


Figure 41: Imported Commodity Prices Compared to Exchange Rate

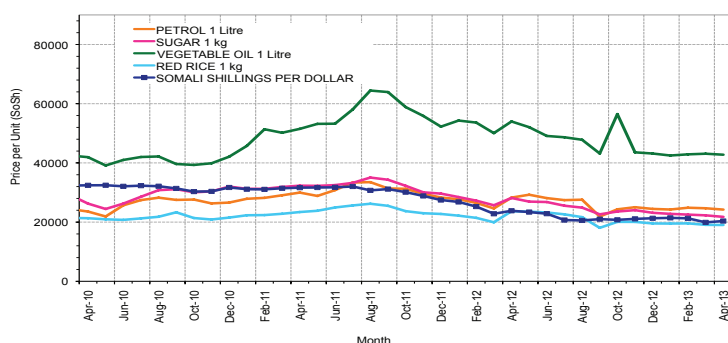


Figure 43: Exchange Rate

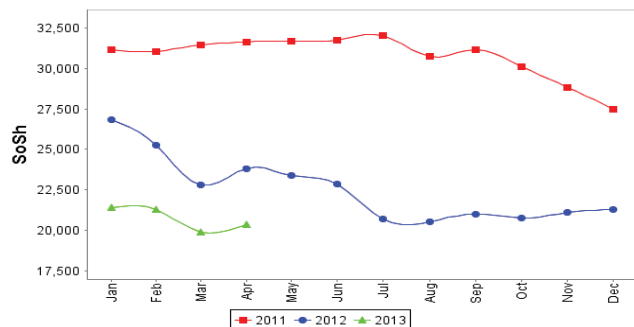


Figure 42: Goat Local Quality

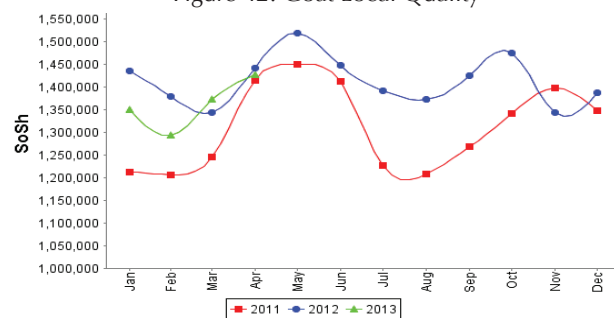
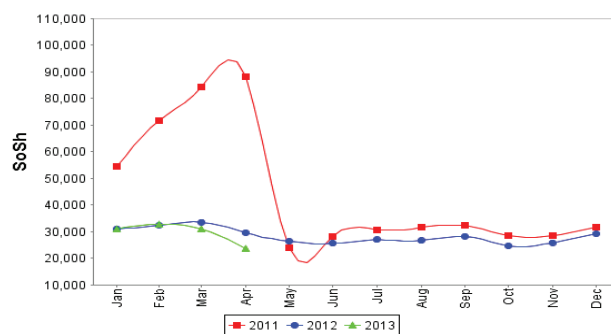


Figure 44: Water Drum



Regional analysis: Northwest Regions

Indicator	5-Year Average (2008-2012)	Apr-12	Mar-13	Apr-13 Nominal Price	Apr-13 Real (Deflated) Price	% Change Same Month Previous Year	% Change Previous Month	% Change 5-year avg (2008-2012)
Imported Commodities Prices								
Diesel 1 litre	5,437	6,730	7,290	6,990	5,726	4%	-4%	29%
Imported Red Rice 1kg	5,438	5,030	5,120	5,065	4,122	1%	-1%	-7%
Petrol 1 litre	5,994	7,260	7,580	7,495	6,147	3%	-1%	25%
Sugar	5,148	5,980	6,080	5,980	4,884	0%	-2%	16%
Vegetable Oil 1 litre	10,558	12,150	12,780	12,830	10,594	6%	0%	22%
Wheat Flour 1kg	4,371	4,320	4,470	4,620	3,751	7%	3%	6%
Wheat Grain 1kg	3,392	3,075	3,156	3,000	2,401	-2%	-5%	-12%
Cereal Prices								
White Sorghum 1kg	3,166	3,480	3,560	3,280	2,634	-6%	-8%	4%
Yellow Maize 1kg	3,144	4,012	3,431	3,375	2,713	-16%	-2%	7%
Livestock & Livestock Product Prices								
Camel Local Quality (Head)	1,744,875	2,310,000	2,479,167	2,861,250	2,384,819	24%	15%	64%
Cattle Local Quality (Head)	1,261,583	1,559,167	1,974,167	2,218,458	1,849,037	42%	12%	76%
Fresh Camel Milk 1 litre	5,370	6,200	6,370	5,900	4,818	-5%	-7%	10%
Goat Export Quality (Head)	295,592	383,550	471,150	497,450	414,536	30%	6%	68%
Goat Local Quality (Head)	226,755	298,000	343,900	360,700	300,552	21%	5%	59%
Other Essential Items								
Charcoal 50kg	31,589	37,300	42,100	42,450	35,283	14%	1%	34%
Cowpeas 1 kg	8,641	11,125	9,950	10,000	8,235	-10%	1%	16%
Unskilled Labor Wage Rate	31,030	37,700	41,500	42,300	35,158	12%	2%	36%
Firewood Bundle	4,065	3,167	7,667	3,667	2,957	16%	-52%	-10%
Local Sesame Oil 1 litre	23,562	24,625	26,563	29,438	24,437	20%	11%	25%
Exchange Rate (Somaliland Shilling per USD)	6,441	6,495	6,865	6,915	5,664	6%	1%	7%
Terms of Trade								
Labour Wage (Daily)/ Cereal (Rice(Kg))	6	7	8	8	-	11%	3%	46%
Local Goat (Head)/ Cereal (Rice(Kg))	42	59	67	71	-	20%	6%	71%
Price Indices								
Consumer Price Index	-	123	129	120	-	-2%	-7%	-

Figure 45: Trends in Cereal Prices

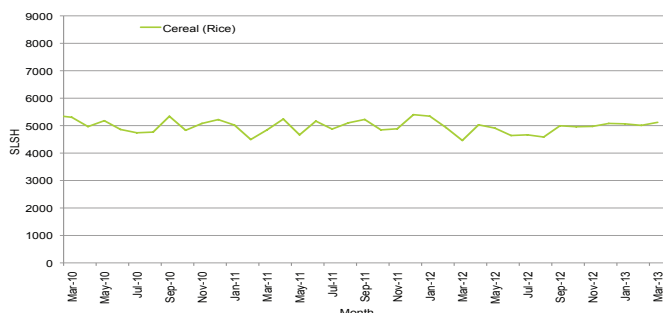


Figure 46: Trends in Wage Rates and Relative Purchasing Power

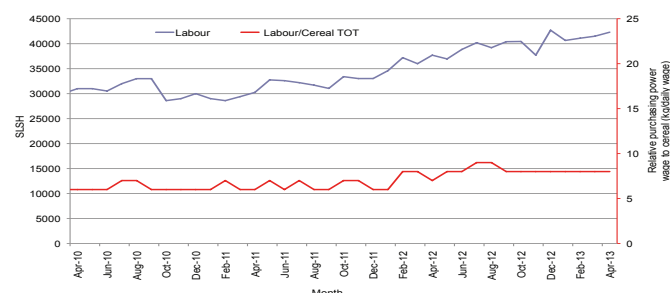


Figure 47: Imported Commodity Prices Compared to Exchange Rate

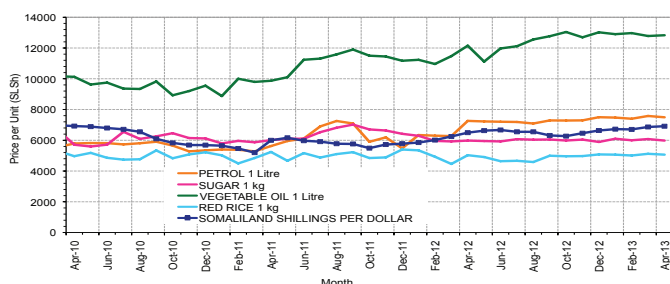


Figure 48: Goat Local Quality

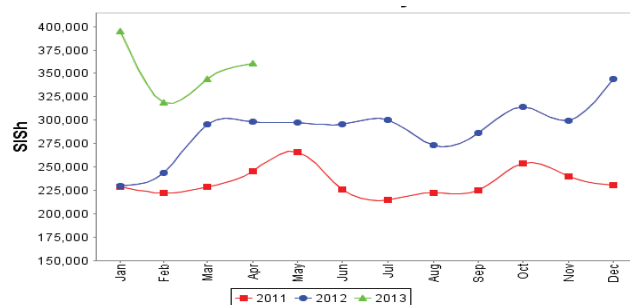


Figure 49: Exchange Rate

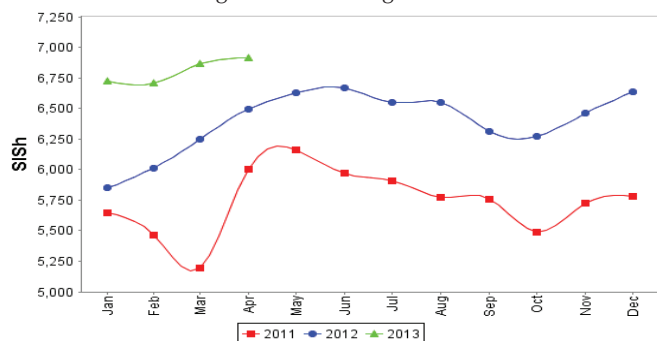
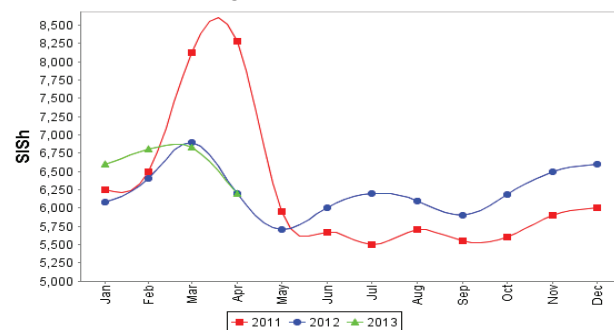


Figure 50: Water Drum



Trends in Livestock Exports

Table 2: Berbera Livestock Exports (Number of Heads)

	1994	1995	1996	1997	1998	1999	2000	2001	2002	2003	2004	2005	2006	2007	2008	2009	2010	2011	2012	2013 (Jan - Mar)
Shoats	1,572,656	2,683,597	2,376,646	2,814,495	957,224	2,048,136	1,601,083	51,546	341,711	563,107	859,404	1,023,795	1,017,242	1,350,054	1,219,519	1,556,003	2,584,810	3,104,684	3,219,584	431,696
Cattle	173,400	167,128	65,127	66,939	92,213	89,967	63,263	20,973	37,547	84,312	131,852	148,151	85,631	88,143	80,051	88,005	133,021	150,934	190,354	46,319
Camels	38,553	21,993	42,801	50,587	11,663	37,430	16,984	3,473	18,864	21,874	5,147	5,069	22,810	14,245	26,515	20,206	92,651	107,281	102,664	24,900

Figure 51: Berbera Livestock Exports (Number of Heads)

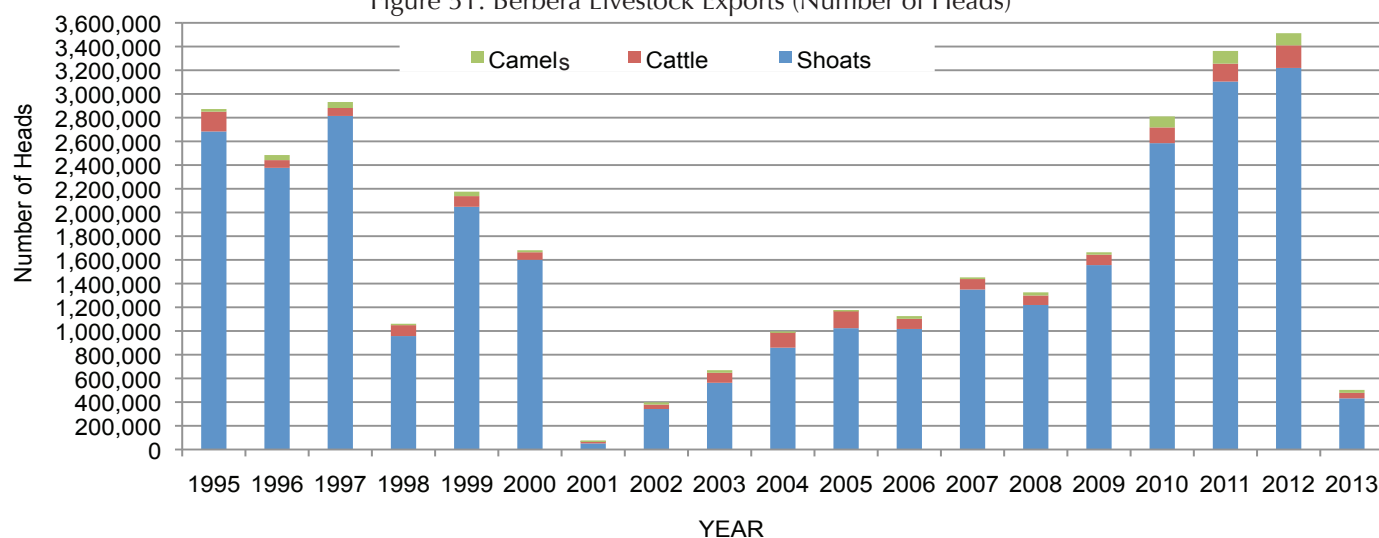
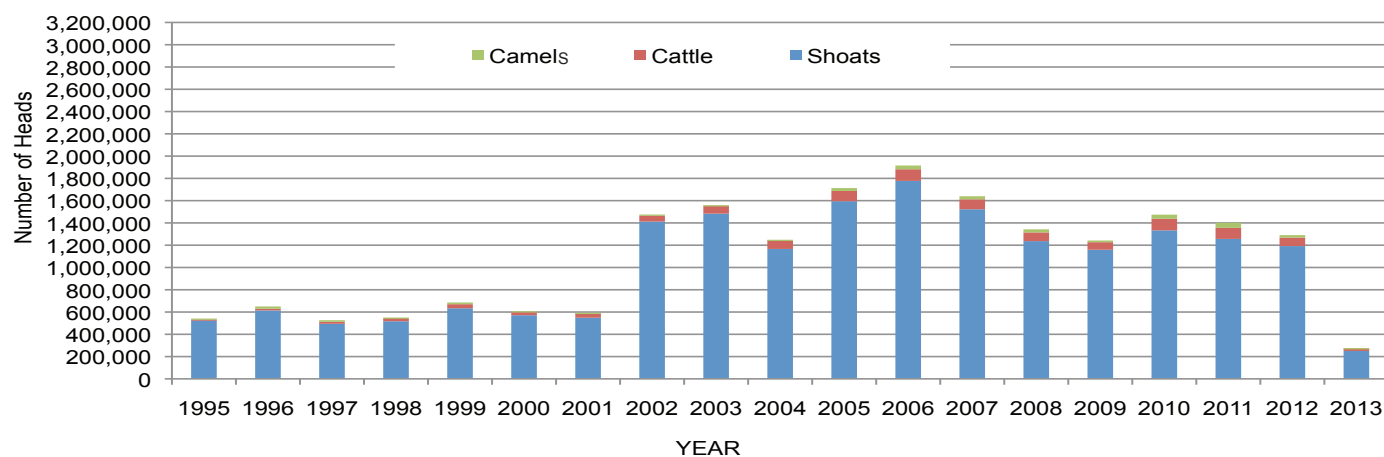


Table 3: Bossaso Livestock Exports (Number of Heads)

	1994	1995	1996	1997	1998	1999	2000	2001	2002	2003	2004	2005	2006	2007	2008	2009	2010	2011	2012	2013 (Jan & Mar)
Shoats	344,000	524,346	614,407	494,320	517,020	633,669	571,455	548,853	1,412,450	1,483,409	1,166,480	1,594,859	1,777,283	1,522,855	1,236,775	1,159,454	1,333,478	1,256,535	1,192,197	250,511
Cattle	1,450	8,795	15,335	17,831	29,492	36,586	27,604	42,248	53,313	71,328	79,994	91,910	104,595	89,190	78,046	67,385	103,808	99,058	76,043	23,428
Camels	5,397	8,392	20,462	14,599	3,938	15,544	8,177	1,950	9,720	4,259	2,488	26,109	33,724	27,580	27,639	15,331	36,865	45,878	22,288	1,922

Figure 52: Bossaso Livestock Exports (Number of Heads)

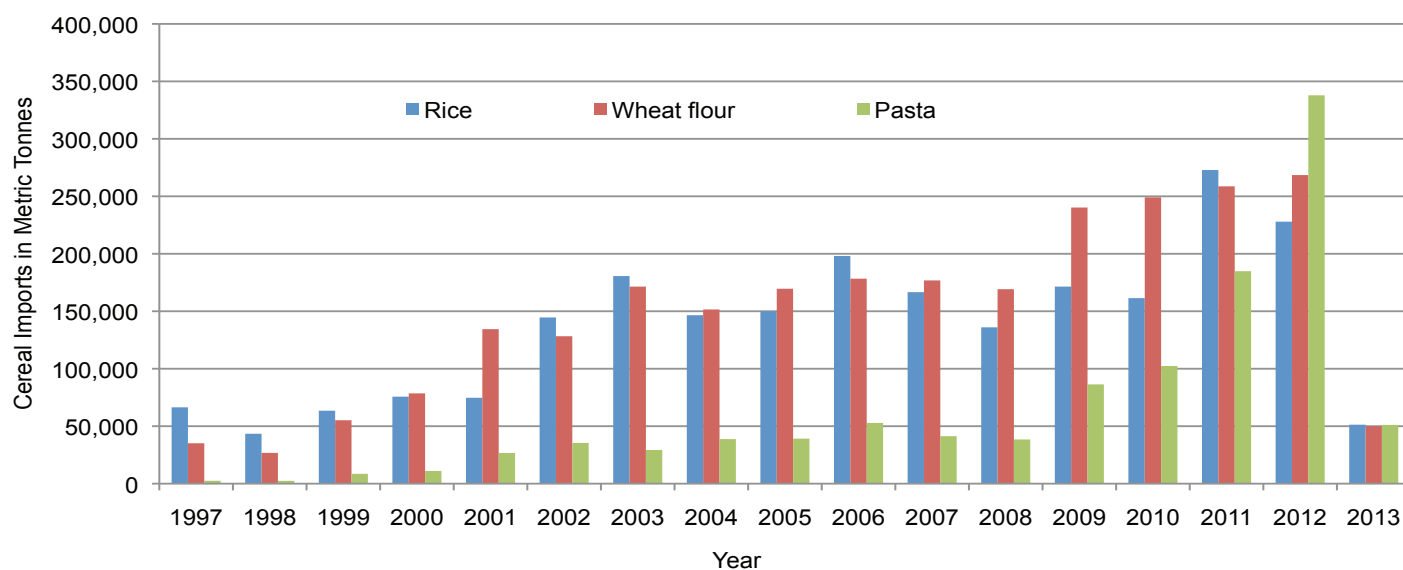


Trends in Cereal Imports

Table 4: Total Cereal Imports (Berbera, Bossaso, Mogadishu)

	1997	1998	1999	2000	2001	2002	2003	2004	2005	2006	2007	2008	2009	2010	2011	2012	2013*
Rice	66,419	43,410	63,464	75,687	74,729	144,600	180,614	146,567	150,017	198,101	166,626	136,007	171,472	161,415	272,877	227,955	51,300
Wheat flour	35,143	26,774	55,176	78,555	134,425	128,263	171,442	151,555	169,583	178,345	176,821	169,208	240,247	249,080	258,679	268,491	49,936
Pasta	2,510	2,455	8,544	11,071	26,702	35,425	29,273	38,749	39,153	52,815	41,331	38,441	86,372	102,373	184,849	337,878	51,130

Figure 53: Total Cereal Imports (Berbera, Bossaso and Mogadishu)



*Mogadishu data is up to Jan 2013; the data is from Elmaan Port.

*Berbera data is up to March 2013.

*Bossaso data is up to March 2013.