

Market DataUpdate

April 2012



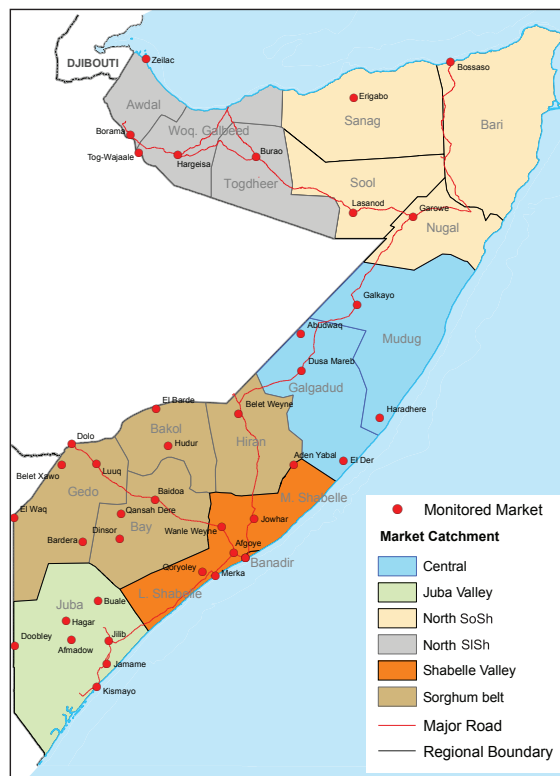
Food Security and Nutrition Analysis Unit - Somalia



Issued May 17th, 2012

Highlights

- Inflation:** The monthly Consumer Price Index (CPI) decreased for the fifth consecutive month in southern regions while remaining stable in Central and increasing slightly in northern regions (3-11%). Annual inflation rates decreased significantly in all Somali Shilling (SoSh) zones including Central (13%), North SoSh (20%) and South (31%); the rates have increased in Somaliland Shilling (SISh) areas (10%). When compared to the base period (March 2007), the cost of living is significantly inflated (106-148%) in SoSh areas, while having risen moderately (30%) in SISh areas.
- Exchange Rates:** SoSh continued to appreciate against the dollar (USD) in South-Central zones while the legal tenders (Sosh & SISh) in the northern regions have slightly devalued over the last one month. Compared to the same month a year ago, SISh lost significant ground to the USD, whereas SoSh gained considerable value against the benchmark currency. The gain of the Somali Shilling is attributed to increased dollar inflows through humanitarian interventions or foreign direct investments, particularly in Mogadishu, and high earnings from the record high livestock exports in 2011.
- Local grain prices:** Maize and red sorghum prices continued on the downward trend in most markets over the last month. However, slight price increases were recorded in Gedo (3%), Banadir (5%), Shabelle Valley (6%) and Northeast (11%). Decline in the prices of local cereals is mostly a consequence of an increased supply of the Deyr 2011/12 crop harvests in the South and humanitarian food assistance. On the other hand, pockets of price appreciation were primarily caused by escalating seasonal rains that have destroyed feeder roads from surplus regions, making them impassable and consequently curtailing supply. Notably, compared to a year ago, cereal prices are considerably lower in the South, Central and Northeast zones but significantly higher in the Northwest mainly due to introduction of mechanized threshing.
- Prices of most imported commodities** declined further in most markets in the last one month, same trend when compared to the similar period last year. An exception however was noted in northern regions where imported commodities rose by 4-14 percent. The slowdown in the prices of these commodities is mainly due to strengthened SoSh and increased supplies following opening of the Mogadishu Port operations and ongoing humanitarian supplies, mostly in the South.
- Livestock prices:** Showed mixed trends, increasing marginally in most of South-Central and northern SoSh regions, but remaining stable or slightly declining in most parts of North SISh and Juba from the previous month. The price rise in the South was mainly due to improved body conditions of livestock and low supply of saleable stock. The decline in livestock prices in some markets in the North was due to deteriorated livestock body condition and low seasonal export demand. With the exception of some markets in Northeast, current prices are significantly higher than a year ago.
- Labour wages:** were stable in most regions, although slight declines were recorded in some markets in the Central Zone in April. The stability in wage rates was mainly sustained by ongoing Gu 2012 cropping season agricultural activities as well as ongoing infrastructure rehabilitation and reconstruction works in Mogadishu. Labour wages are significantly higher than their levels a year ago in most markets.
- Terms of Trade (ToT)** between labour wages/ local goat prices and cereals increased in most markets from their levels a month ago and also over the past year, on the backdrop of reduced cereals prices, improved goat prices and stable labour wages.



This Market Data Update is a monthly report that presents a compilation of tabulated graphical market information produced regularly as part of the monthly monitoring process.

The weekly price data is collected from 44 main markets throughout Somalia since 1995.

The 5-year period of 2003-07 was characterised by fairly stable prices and relatively low inflation. In this bulletin, these years are used as a reference period for seasonal trends comparison.

Market analysis is an integral part of all of FSNAU's Annual Food Security Projections and seasonal technical reports (Technical Reports on FSNAU Post Gu and Deyr Analysis).

This data is available online on www.fsnau.org/ids.

Technical and Managerial Support



Funding Agencies



Regional Market Highlights

- **Juba Valley:** Maize prices, imported food commodities (rice, cooking oil & diesel), livestock (cattle & camel) and most other essential commodities (firewood, charcoal, sesame oil, etc.) declined slightly over the previous month, but those of goats increased. Prices of imported food and cereals are significantly lower than a year ago, but those of livestock are higher. Though sustained over the previous month, annual comparisons for ToT between labor and cereals indicate improvement in purchasing power, with 9kgs of maize able to be purchased by a day's worth of labour in April 2012.
- **Sorghum Belt:** Over the last month, local cereal prices remained stable in Hiran, declined slightly in Bay (11%) and Bakool (12%) but increased marginally in Gedo (3%). Price of imported commodities declined while livestock prices rose in the previous month and also over the last year. Declining cereal prices enhanced the ToT between labour and cereals in most regions, particularly in Hiran. Further, compared to a year ago the ToT in Bay region is almost 7 times more (23kg/daily wage) and 2-2.3 times higher in the rest of the Sorghum Belt regions.
- **Shabelle Valley:** In April 2012, prices of imported food declined those of maize increased while livestock quotations were steady. The increase in maize prices resulted in a monthly reduction in ToT (9%) currently standing at 10kg/daily wage rate. Prices of most imported commodities and cereals are significantly lower when compared to the same month a year ago. Livestock prices on the other hand are significantly higher over the same period.
- **Central:** Prices of imported commodities and locally produced cereals were stable to declining while those for livestock increased slightly in most main markets in April. Compared to a year ago, the price of Imported commodities and cereals were significantly lower but local quality goat and camel prices increased. ToT (rice/local goat) improved over the month of April, up to 57kg/local goat, which is 48% higher than a year ago.
- **Northeast:** Prices of red sorghum, livestock, imported food and other essential commodities increased over the previous month. However, annual price comparisons show decline for imported commodities and locally produced cereals. ToT (rice/ local goat) improved slightly over the previous month but significantly (18%) when compared to the same month a year ago, currently standing at 71kg/local goat.
- **Northwest:** Prices of most items monitored increased slightly in most markets over the month of April but are significantly inflated when compared to the same month a year ago. The ToT between white sorghum and wages (11kgs/daily wage rate) showed slight monthly and annual increases, attributable to increase in labour wage rates and slight decline in white sorghum prices. However, due to increased rice prices (13%), ToT (rice/local goat) declined (10%) over the last month, to settle at 59kg/local goat.
- **Banadir:** In the last one month, prices decreased mainly for imported commodities (rice, cooking oil & diesel) and other essential livelihood items while increasing for maize and goat. With the exception of livestock, prices of most items are significantly below their levels a year ago. For the first month since the beginning of the year, the ToT cereal (maize/labour wage) declined slightly (4%), but is 3-times as high as the same month in 2011. The weakening of the purchasing power in the last one month is mainly as a result low supply of maize and consequent maize price inflation. The low supply was occasioned by seasonal rains that have hampered road transport between Mogadishu and the producing Shabelle region.

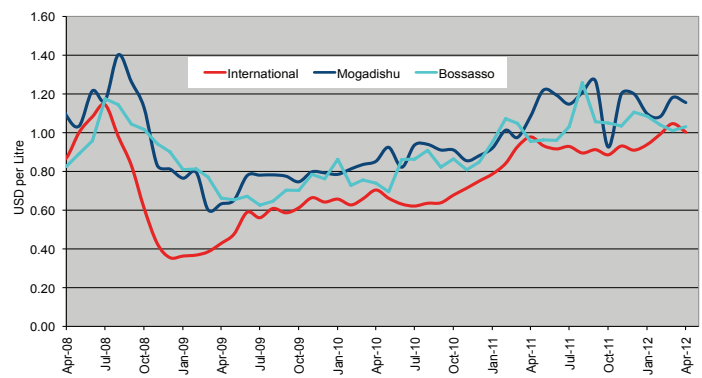
Table 1: Monthly and Annual Changes in Terms of Trade

Terms of Trade: Amount of Cereals (kg) per Daily Labour Wage Rate Region	Cereal used	April -11	Mar -12	April -12	Monthly change	Annual change
		(kg/daily wage)	(kg/daily wage)	(kg/daily wage)	(%)	(%)
Banadir	White Maize	4	14	13	-4%	225%
Bay	Red Sorghum	3	20	23	15%	667%
Bakool	Red Sorghum	3	10	11	10%	267%
Gedo	Red Sorghum	5	22	21	-5%	320%
Hiraan	White Maize	6	11	14	27%	133%
Juba	White Maize	4	9	9	0%	125%
Shabelle	White Maize	4	11	10	-9%	150%
Northeast	Red Sorghum	4	5	5	0%	25%
Northwest	White Sorghum	9	10	11	10%	22%
Central	Red Sorghum	4	6	6	0%	50%

International Market Highlights*

Diesel: Crude oil prices in Abu Dhabi (Dubai),¹ the main source of Somalia's oil imports, fell (3.5%) in April to close at \$118.18/ barrel, reversing several months of progressive gains. The International Energy Agency's May 2012 Oil Market Report posit that the decline was in line with the normal seasonal trends as it came with the start of the first month of the typically low demand season in the second quarter of the year. In addition, rising production and inventories held by OPEC Member Countries and China's lower-than-expected quarterly economic growth helped dampen crude oil costs². However, the quotation is still high (8 percent higher than the same month last year), supported by ongoing geopolitical risks and the potential disruption of trade flows. **In Somalia port cities (Bossaso and Mogadishu), diesel prices remained stable when compared to last month but declined significantly (16-19%) over the last one year, buoyed by strengthening domestic currencies and increased supply following opening up of Mogadishu Port. (<http://www.fsnau.org/ids>).**

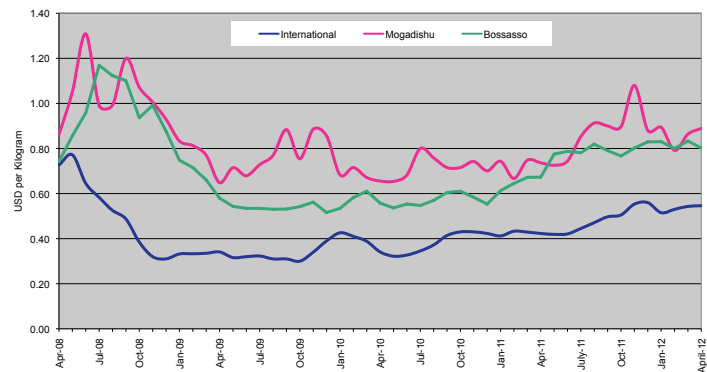
Figure 1: Diesel Prices: Dubai, Mogadishu and Bossaso



Source: FAO Statistics, FEWSNET and FSNAU Market Price Monitoring System, 2012

Rice: According to FAO's Food Price Index (May 2012), monthly export price of Thai rice³ surged slightly (1%), closing at USD 546/ ton in April 2012. The price quotations are significantly (29%) higher than same time last year. The firming of prices in Thailand was mainly sustained by ongoing government support measures⁴ and solid export demand⁵. **In the last one month, price declines of imported rice in Bossaso and Mogadishu ports were minimal (1-5%), stabilized mainly by reduced domestic demand following increased market availability of locally-produced cereals. These prices were however 10-16 percent lower when compared to the same month a year ago.**

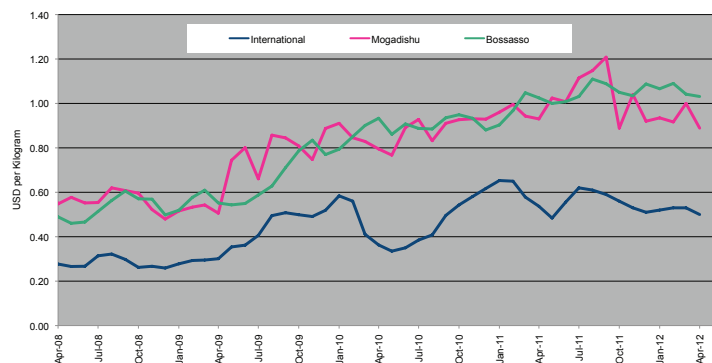
Figure 2: Rice Prices: Bangkok FOB, Mogadishu and Bossaso Markets



Source: FAO Statistics, FEWSNET and FSNAU Market Price Monitoring System, 2012

Sugar: The FAO Sugar Price Index⁶ averaged 324 points in April, down 18 points (5 percent) from March and as much as 22 points (6 percent) below their level in April 2011. Overall, sugar prices traded lower as new supplies from Brazil, the world's largest sugar producer, are expected to enter the market in May. Increased availability of sugar was also reported in India, the EU and Thailand, which contributed to keeping prices below their high levels of last season. **The effect of the international price developments are clearly discernible in the local port markets of Somalia where sugar prices remained stable over the past month but declined (14-30%) when compared to the same period in 2011.**

Figure 3: Sugar Prices: International, Mogadishu and Bossaso Markets



Source: ISO, FEWSNET and FSNAU Market Price Monitoring System, 2012

Cooking Oil: The FAO Oils/Fats Price Index⁷ averaged 251 points in April, up 6 points (or 2.2 percent) from March. Falling production expectations in South America and growing concern about the season's tight supply of soybeans and derived products has led to an increase in soybean prices.. Reduced export availabilities of soy have increased global demand for palm oil but this as well has been increasing in price due in part to weak production growth. However, the Fats Price Index remained stable (declining only by 1%) when compared to the same month a year ago. **International price transmission in cooking oil is not explicitly evident in port cities of Somalia. Specifically, vegetable oil prices remained stable over the previous month in both cities but showed a significant annual decline (25%) in Mogadishu on the backdrop of on-going humanitarian interventions and accelerated cargo handling capacity following the opening up of the local ports. Relative stability (1% annual increase) in vegetable oil price was observed in Bosasso.**

1 Weekly Abu Dhabi Murban Spot Price FOB (Dollars per Barrel), US Energy Information Administration, http://www.eia.doe.gov/dnav/pet/pet_pri_wco_k_w.htm

2 International Energy Agency (IEA) Monthly Oil Market Report, May, 2012; <http://omrpublic.iea.org/currentissues/full.pdf>; www.oilmarketreport.org

3 Bangkok, Rice (Thai A1 Super 1/ B), Export, US Dollar/ Tonne

4 FAO Food Price Index, May, 2012, <http://www.fao.org/worldfoodsituation/wfs-home/foodpricesindex/en/>; International Grain Council Grain Market Report (GMR No. 420), 2nd April 2012, <http://www.igc.int/en/downloads/gmrsummary/gmrsumme.pdf>

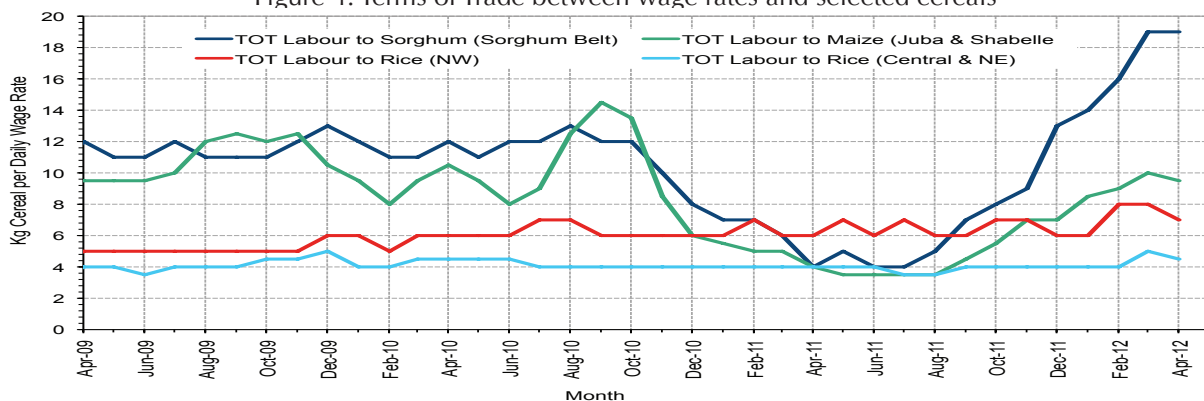
5 Ibid

6 Ibid

7 Ibid

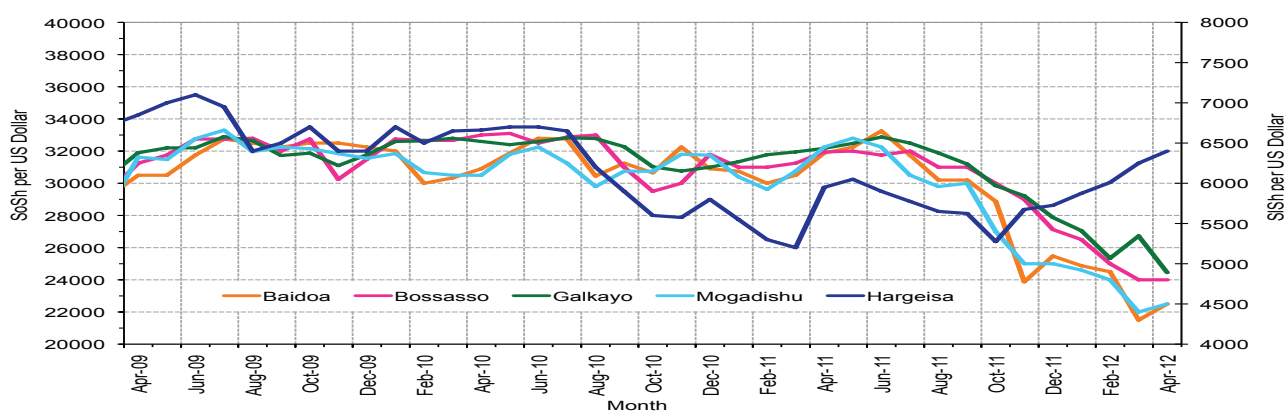
National Trends: CPI, Exchange Rates, Cereal Prices and Relative Purchasing Power

Figure 4: Terms of Trade between wage rates and selected cereals



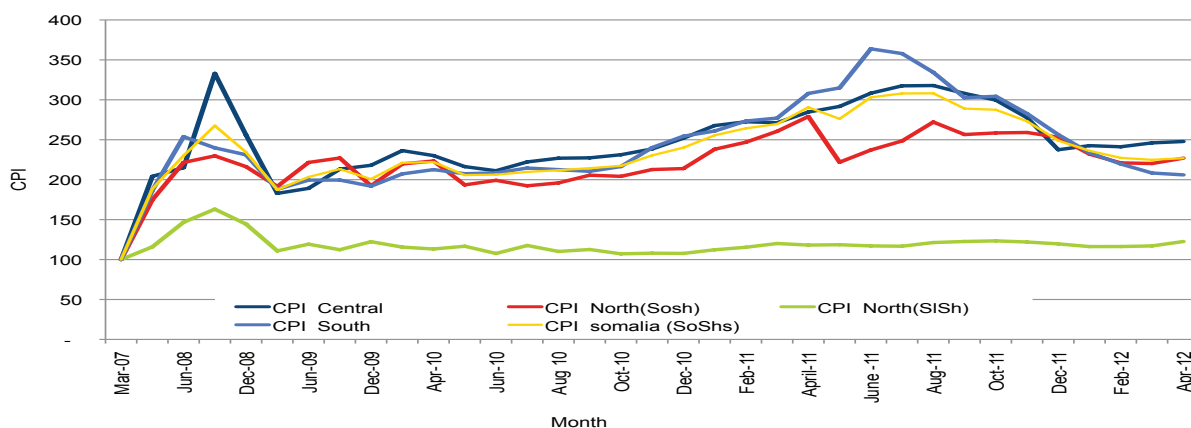
* Purchasing power stable over the last month, but higher than last year

Figure 5: Monthly Exchange Rate for Selected Regions (SoSh and SISH to USD)



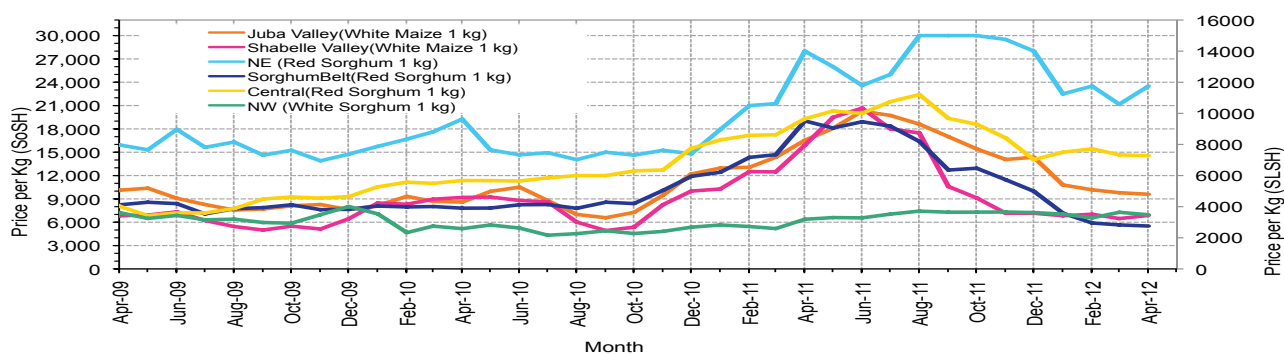
*SoSh continues strengthening against the USD although SISH has marginally depreciated

Figure 6: Monthly Trends in Consumer Price Index (CPI, March 2007=100)



*Inflation is slowly easing in SoShs regions but stable in Somaliland

Figure 7: Monthly Trends in Local Cereal Prices



*Local cereals continue on a downward trend in the south, but stable in other regions

Regional analysis: Juba Regions

Indicator	Apr-11	Mar-12	Apr-12 Nominal Price	Apr-12 Real (Deflated) Price	% Change Same Month Previous Year	% Change Previous Month	% Change 5-year avrg (2003-07)
Imported Commodities Prices							
Diesel 1 litre	34,143	30,107	29,407	14,173	-14%	-2%	132%
Imported Red Rice 1kg	23,643	19,750	18,457	8,858	-22%	-7%	129%
Petrol 1 litre	32,786	36,343	33,614	16,215	3%	-8%	116%
Sugar	32,393	23,071	22,929	11,029	-29%	-1%	162%
Vegetable Oil 1 litre	57,321	41,504	40,714	19,661	-29%	-2%	125%
Wheat Flour 1kg	21,571	18,214	17,657	8,470	-18%	-3%	116%
Wheat Grain 1kg	16,000	-	-	-	-	-	-
Cereal Prices							
Red Sorghum 1kg	-	-	-	-	-	-	-
White Maize 1kg	16,536	9,798	9,599	4,559	-42%	-2%	231%
Livestock & Livestock Product Prices							
Camel Local Quality (Head)	7,537,500	9,442,100	9,054,152	4,394,480	20%	-4%	191%
Cattle Local Quality (Head)	2,050,000	3,500,286	3,303,924	1,603,513	61%	-6%	128%
Fresh Camel Milk 1 litre	26,786	23,036	21,867	10,514	-18%	-5%	220%
Goat Export Quality (Head)	916,429	1,329,571	1,488,769	722,496	62%	12%	251%
Goat Local Quality (Head)	568,929	789,643	907,574	440,406	60%	15%	204%
Other Essential Items							
Charcoal 50kg	69,286	84,893	91,586	44,353	32%	8%	206%
Cowpeas 1 kg	28,500	30,261	27,600	13,296	-3%	-9%	266%
Unskilled Labor Wage Rate	65,893	88,857	90,950	44,044	38%	2%	155%
Firewood Bundle	6,143	8,393	7,543	3,561	23%	-10%	186%
Local Sesame Oil 1 litre	75,893	72,737	71,921	34,808	-5%	-1%	254%
Exchange Rate (Somali Shilling per USD)	31,484	22,911	22,004	10,580	-30%	-4%	38%
Construction Materials*							
Cement 50kg	330,500	301,847	284,560	138,016	-14%	-6%	-
Cooking Pot Aluminium 7 Litre	324,167	309,107	302,000	146,481	-7%	-2%	-
Galvanised Iron Sheet Ga 26	159,375	184,357	135,758	65,792	-15%	-26%	-
Hollow Concrete Block 10cm x 20cm x 40cm	18,750	18,333	15,000	-	-	-18%	-
Non Collapsible Jerrycan 10 Litre	27,500	33,167	35,133	16,952	28%	6%	-
Plastic Tarpaulin 14m x 5 m	600,000	324,143	325,367	157,822	-46%	0%	-
Roofing Nails 15Kg	804,286	614,464	773,571	375,365	-4%	26%	-
Timber 2in x 4in x 20ft	340,000	281,063	261,300	126,726	-23%	-7%	-
Woven Dry Raised Blanket 150cm x 200cm	100,000	45,000	-	-	-	-	-
Terms of Trade							
Labour Wage (Daily)/ Cereal (Maize(Kg))	4	9	9	-	138%	4%	-23%
Local Goat (Head)/ Cereal (Maize(Kg))	34	81	95	-	175%	17%	-8%
Price Indices							
Consumer Price Index	308	208	206	-	-33%	-1%	-
Purchasing Power Index	0.32	0.48	0.49	-	49%	1%	-

* Data has been collected since May 2010

Figure 8: Imported commodity prices compared to exchange rates

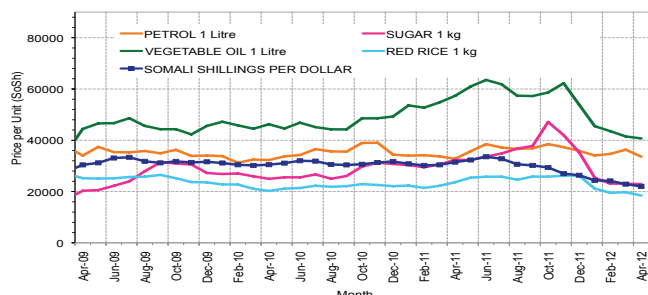


Figure 10: Goat Local Quality

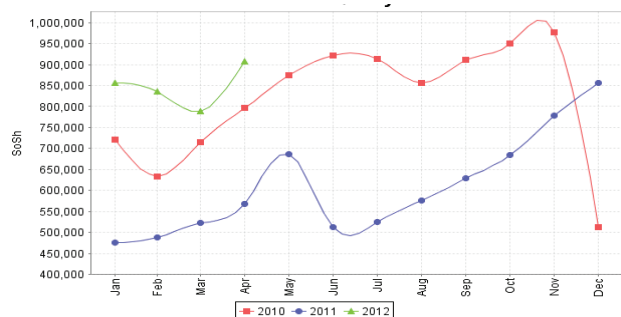


Figure 12: Water Drum

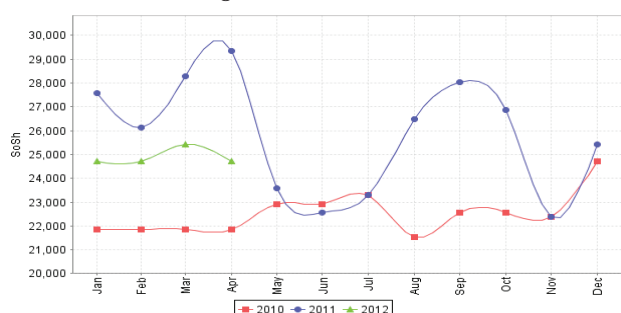


Figure 9: Trends in wage rates, staple cereal prices and relative purchasing power

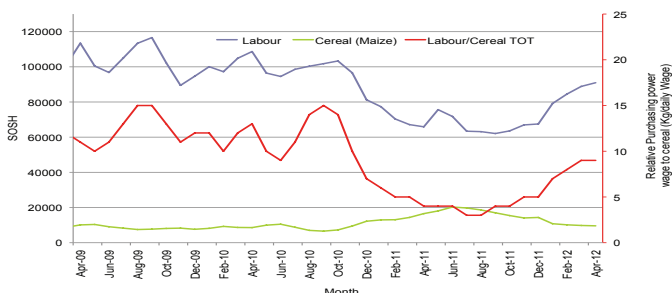


Figure 11: Exchange Rate

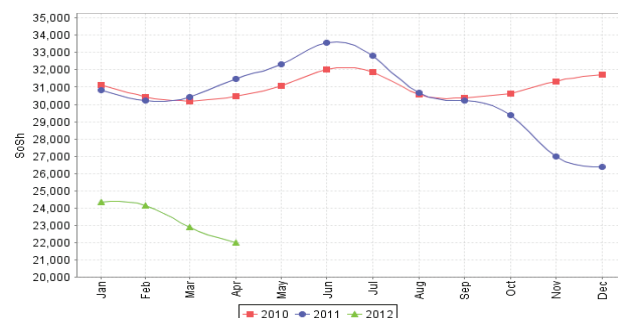
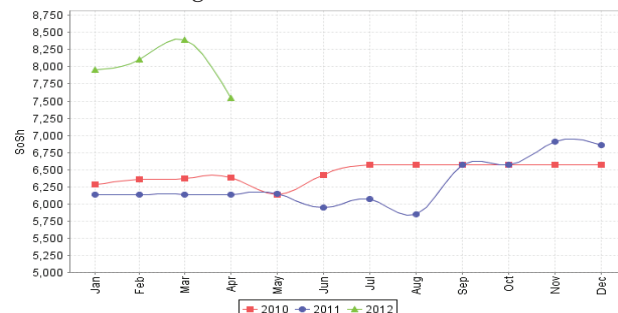


Figure 13: Firewood Bundle



Regional analysis: Sorghum Belt Regions (Bay, Bakool, Gedo and Hiran)

Indicator	Apr-11	Mar-12	Apr-12 Nominal Price	Apr-12 Real (Deflated) Price	% Change Same Month Previous Year	% Change Previous Month	% Change 5-year avrg (2003-07)
Imported Commodities Prices							
Diesel 1 litre	40,273	32,500	34,027	16,416	-16%	5%	188%
Imported Red Rice 1kg	28,682	20,909	20,177	9,693	-30%	-4%	139%
Petrol 1 litre	37,795	34,136	33,477	16,149	-11%	-2%	127%
Sugar	33,750	26,136	25,068	12,067	-26%	-4%	167%
Vegetable Oil 1 litre	61,227	45,023	43,477	21,002	-29%	-3%	136%
Wheat Flour 1kg	23,773	18,864	18,850	9,049	-21%	0%	128%
Wheat Grain 1kg	18,563	7,400	6,675	3,140	-64%	-10%	77%
Cereal Prices							
Red Sorghum 1kg	19,025	5,655	5,513	2,576	-71%	-3%	225%
White Maize 1kg	16,875	6,955	7,068	3,331	-58%	2%	179%
Livestock & Livestock Product Prices							
Camel Local Quality (Head)	6,363,637	11,735,834	11,858,334	5,755,536	86%	1%	275%
Cattle Local Quality (Head)	1,420,625	3,289,286	3,420,000	1,659,853	141%	4%	153%
Fresh Camel Milk 1 litre	30,500	24,295	25,409	12,233	-17%	5%	268%
Goat Export Quality (Head)	976,250	1,525,000	1,586,818	770,088	63%	4%	302%
Goat Local Quality (Head)	517,045	1,069,091	1,138,409	552,445	120%	6%	334%
Other Essential Items							
Charcoal 50kg	110,455	157,727	165,409	80,184	50%	5%	331%
Cowpeas 1 kg	36,375	22,889	24,542	11,812	-33%	7%	351%
Unskilled Labor Wage Rate	80,227	106,136	106,364	51,525	33%	0%	431%
Firewood Bundle	5,182	6,205	6,364	2,989	23%	-3%	264%
Local Sesame Oil 1 litre	79,500	76,429	70,708	34,219	-11%	-7%	234%
Exchange Rate (Somali Shilling per USD)	31,414	23,142	22,843	10,987	-27%	-1%	40%
Construction Materials*							
Cement 50kg	346,250	328,000	343,000	166,381	-1%	5%	-
Cooking Pot Aluminium 7 Litre	335,000	322,000	270,750	131,313	-19%	-16%	-
Galvanised Iron Sheet Ga 26	208,500	189,545	185,750	90,057	-11%	-2%	-
Hollow Concrete Block 10cm x 20cm x 40cm	9,500	10,100	10,875	5,178	14%	4%	-
Non Collapsible Jerrycan 10 Litre	52,455	53,136	53,136	25,690	1%	0%	-
Plastic Tarpaulin 14m x 5 m	306,944	289,525	299,025	145,037	-3%	3%	-
Roofing Nails 15kg	836,000	741,306	728,333	353,408	-13%	-2%	-
Timber 2in x 4in x 20ft	261,071	287,778	300,938	145,965	15%	5%	-
Woven Dry Raised Blanket 150cm x 200cm	90,000	99,000	85,000	41,156	-6%	-14%	-
Terms of Trade							
Labour Wage (Daily)/ Cereal (Sorghum(Kg))	4	19	19	-	358%	3%	63%
Local Goat (Head)/ Cereal (Sorghum(Kg))	27	189	206	-	660%	9%	33%
Price Indices							
Consumer Price Index	308	208	206	-	-33%	-1%	-
Purchasing Power Index	0.32	0.48	0.49	-	49%	1%	-

* Data has been collected since May 2010

Figure 14: Imported commodity prices compared to exchange rates

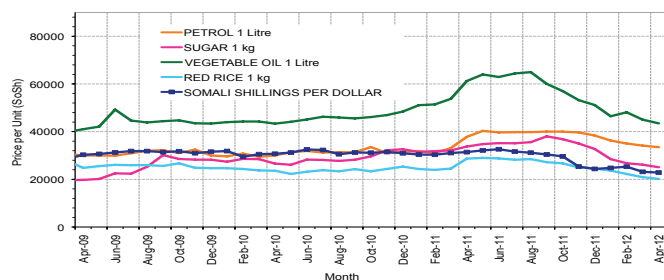


Figure 16: Goat Local Quality

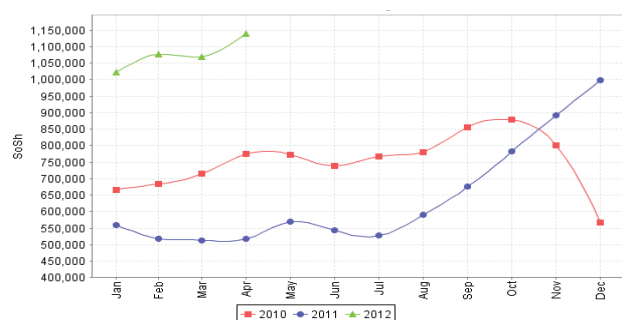


Figure 18: Water Drum

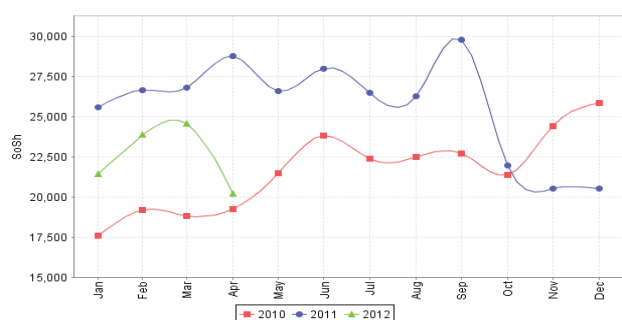


Figure 15: Trends in wage rates, staple cereal prices and relative purchasing power

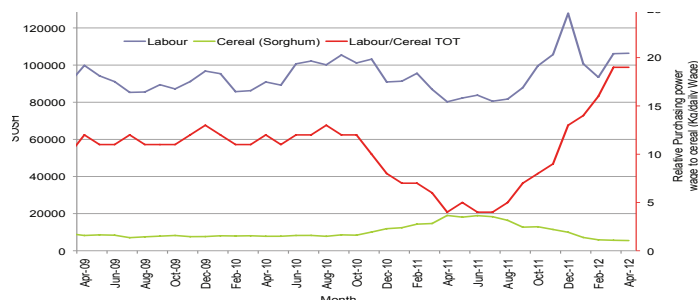


Figure 17: Exchange Rate

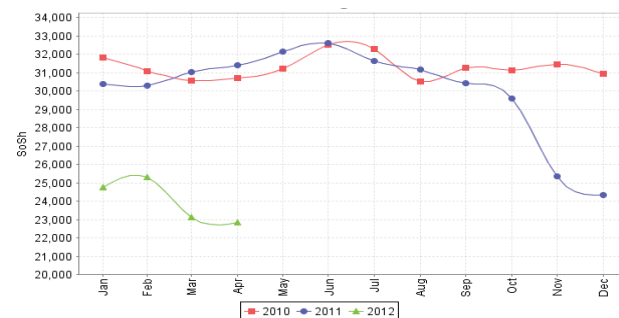
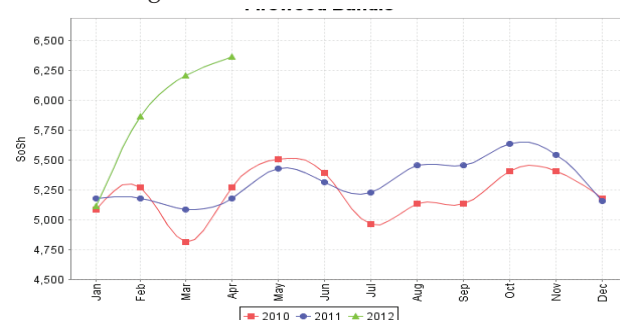


Figure 19: Firewood Bundle



Regional analysis: Shabelle Regions

Indicator	Apr-11	Mar-12	Apr-12 Nominal Price	Apr-12 Real (Deflated) Price	% Change Same Month Previous Year	% Change Previous Month	% Change 5-year avg (2003-07)
Imported Commodities Prices							
Diesel 1 litre	36,000	30,708	29,875	14,400	-17%	-3%	225%
Imported Red Rice 1kg	21,675	17,833	17,208	8,252	-21%	-4%	150%
Petrol 1 litre	31,792	34,542	32,042	15,452	1%	-7%	126%
Sugar	30,958	22,292	21,875	10,517	-29%	-2%	181%
Vegetable Oil 1 litre	51,458	35,125	34,667	16,726	-33%	-1%	155%
Wheat Flour 1kg	21,542	15,417	15,917	7,626	-26%	3%	140%
Wheat Grain 1kg	-	13,333	9,250	4,390	-	-31%	115%
Cereal Prices							
Red Sorghum 1kg	17,319	8,928	8,846	4,194	-49%	-1%	305%
White Maize 1kg	15,893	6,472	6,873	3,236	-57%	6%	132%
Livestock & Livestock Product Prices							
Camel Local Quality (Head)	10,555,000	15,080,000	14,627,500	7,099,595	39%	-3%	252%
Cattle Local Quality (Head)	2,142,500	4,155,000	4,230,000	2,052,999	97%	2%	261%
Fresh Camel Milk 1 litre	25,542	17,000	18,917	9,082	-26%	11%	232%
Goat Export Quality (Head)	1,400,250	1,912,500	1,891,875	918,152	35%	-1%	264%
Goat Local Quality (Head)	767,917	1,319,583	1,287,500	624,809	68%	-2%	269%
Other Essential Items							
Charcoal 50kg	106,469	125,972	129,903	62,951	22%	3%	204%
Cowpeas 1 kg	30,716	24,602	24,793	11,934	-19%	1%	349%
Unskilled Labor Wage Rate	57,500	68,750	69,583	33,673	21%	1%	213%
Firewood Bundle	4,667	5,708	5,750	2,691	23%	1%	184%
Local Sesame Oil 1 litre	60,792	50,458	45,958	22,206	-24%	-9%	158%
Exchange Rate (Somali Shilling per USD)	31,723	23,375	22,504	10,823	-29%	-4%	34%
Construction Materials*							
Cement 50kg	261,400	203,750	202,100	97,993	-23%	-1%	-
Cooking Pot Aluminium 7 Litre	750,000	700,000	700,000	339,656	-7%	0%	-
Galvanised Iron Sheet Ga 26	131,700	92,600	89,650	43,413	-32%	-3%	-
Hollow Concrete Block 10cm x 20cm x 40cm	14,000	12,563	11,667	5,563	-17%	-7%	-
Non Collapsible Jerrycan 10 Litre	46,438	45,563	34,333	16,564	-26%	-25%	-
Plastic Tarpaulin 14m x 5 m	301,667	231,867	261,000	126,581	-13%	1%	-
Roofing Nails 15Kg	631,667	594,000	600,000	291,120	-5%	1%	-
Timber 2in x 4in x 20ft	58,400	47,400	43,000	20,771	-26%	-9%	-
Woven Dry Raised Blanket 150cm x 200cm	79,250	63,833	69,750	33,754	-12%	9%	-
Terms of Trade							
Labour Wage (Daily)/ Cereal (Maize(Kg))	4	11	10	-	180%	-5%	35%
Local Goat (Head)/ Cereal (Maize(Kg))	48	204	187	-	288%	-8%	59%
Price Indices							
Consumer Price Index	308	208	206	-	-33%	-1%	-
Purchasing Power Index	0.32	0.48	0.49	-	49%	1%	-

* Data has been collected since May 2010

Figure 20: Imported commodity prices compared to exchange rates

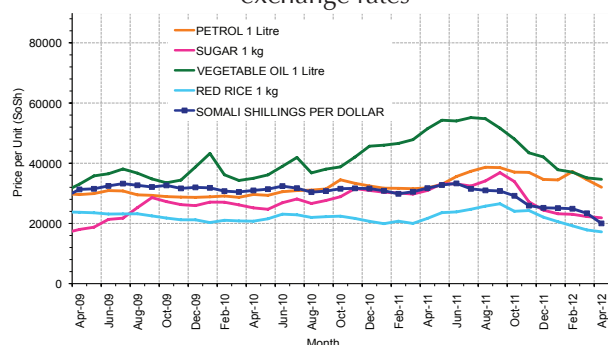


Figure 22: Goat Local Quality

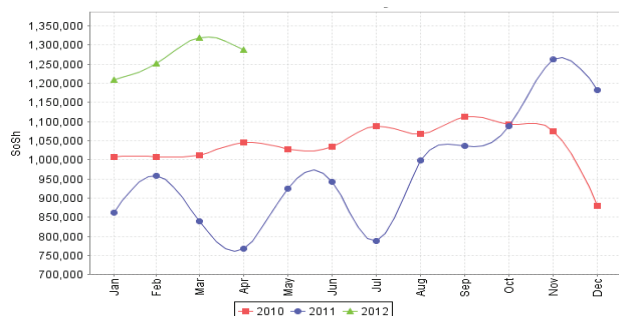


Figure 24: Water Drum

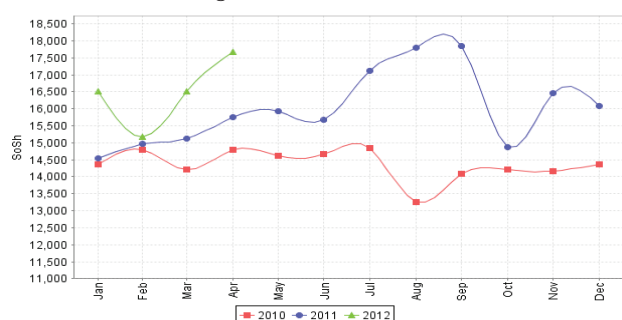


Figure 21: Trends in wage rates, staple cereal prices and relative purchasing power

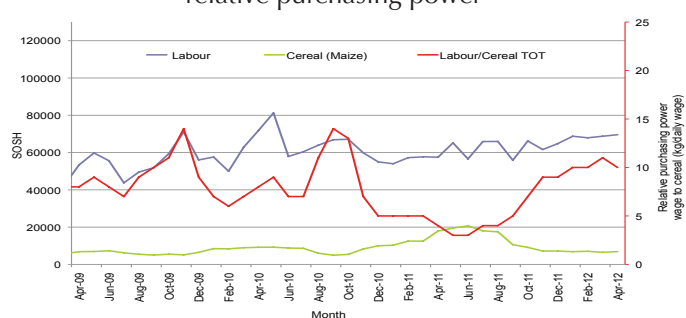


Figure 23: Exchange Rate

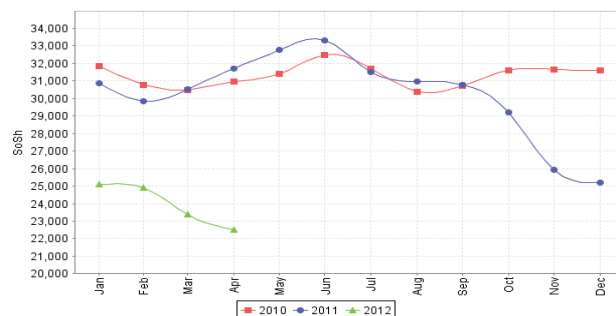
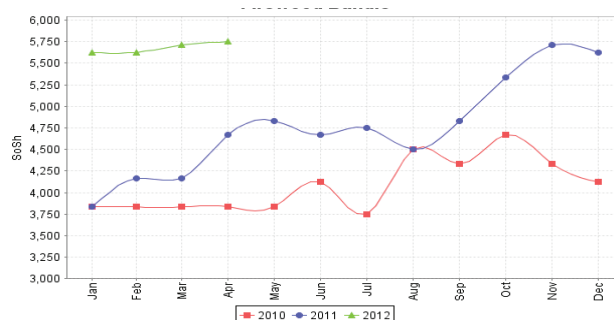


Figure 25: Firewood Bundle



Regional analysis:Banadir Region

Indicator	Apr-11	Mar-12	Apr-12 Nominal Price	Apr-12 Real (Deflated) Price	% Change Same Month Previous Year	% Change Previous Month	% Change 5-year avrg (2003-07)
Imported Commodities Prices							
Diesel 1 litre	31,258	26,458	26,188	12,611	-16%	-1%	210%
Imported Red Rice 1kg	24,075	18,375	17,396	8,343	-28%	-5%	154%
Petrol 1 litre	30,592	28,542	28,700	13,830	-6%	1%	127%
Sugar	28,917	21,542	20,125	9,668	-30%	-7%	168%
Vegetable Oil 1 litre	49,383	35,208	34,958	16,867	-29%	-1%	162%
Wheat Flour 1kg	19,500	13,750	12,917	6,169	-34%	-6%	96%
Wheat Grain 1kg	18,000	7,900	9,300	4,414	-48%	18%	129%
Cereal Prices							
Red Sorghum 1kg	19,387	6,450	6,154	2,887	-68%	-5%	155%
White Maize 1kg	18,428	7,346	7,700	3,637	-58%	5%	157%
Livestock & Livestock Product Prices							
Camel Local Quality (Head)	16,500,000	11,000,000	-	-	-	-	-
Cattle Local Quality (Head)	3,400,000	5,000,000	-	-	-	-	-
Fresh Camel Milk 1 litre	20,800	19,896	19,167	9,203	-8%	-4%	280%
Goat Export Quality (Head)	1,725,000	2,000,000	2,200,000	1,067,706	28%	10%	-
Goat Local Quality (Head)	1,520,000	1,856,250	2,018,750	979,733	33%	9%	250%
Other Essential Items							
Charcoal 50kg	148,500	181,250	179,688	87,114	21%	-1%	80%
Cowpeas 1 kg	36,229	22,017	20,642	9,919	-43%	-6%	329%
Unskilled Labor Wage Rate	77,542	103,333	103,750	50,257	34%	0%	80%
Firewood Bundle	7,275	7,917	7,333	3,459	1%	-7%	-82%
Local Sesame Oil 1 litre	67,592	54,667	53,458	25,847	-21%	-2%	199%
Exchange Rate (Somali Shilling per USD)	31,748	22,483	22,275	10,712	-30%	-1%	32%
Construction Materials*							
Cement 50kg	234,488	159,667	162,000	78,529	-31%	1%	-
Cooking Pot Aluminium 7 Litre	265,000	306,667	304,917	147,896	15%	-1%	-
Galvanised Iron Sheet Ga 26	124,179	93,458	91,458	44,291	-26%	-2%	-
Hollow Concrete Block 10cm x 20cm x 40cm	10,796	9,104	9,958	4,733	-8%	9%	-
Non Collapsible Jerrycan 10 Litre	47,000	33,333	34,000	16,402	-28%	2%	-
Plastic Tarpaulin 14m x 5 m	241,667	274,750	268,333	130,140	11%	-2%	-
Roofing Nails 15kg	601,833	490,125	482,563	234,120	-20%	-2%	-
Timber 2in x 4in x 20ft	164,429	116,917	121,758	58,997	-26%	4%	-
Woven Dry Raised Blanket 150cm x 200cm	97,917	132,875	110,417	53,493	13%	-17%	-
Terms of Trade							
Labour Wage (Daily)/ Cereal (Maize(Kg))	4	14	13	-	220%	-4%	-30%
Local Goat (Head)/ Cereal (Maize(Kg))	82	253	262	-	218%	4%	36%
Price Indices							
Consumer Price Index	308	208	206	-	-33%	-1%	-
Purchasing Power Index	0.32	0.48	0.49	-	-	-	-

* Data has been collected since May 2010

Figure 26: Bakara: Imported Commodity Prices compared to Exchange Rate

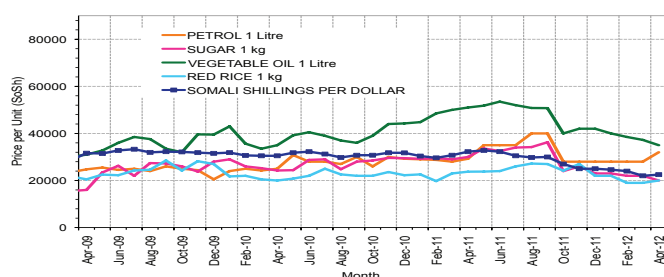


Figure 28: Goat Local Quality

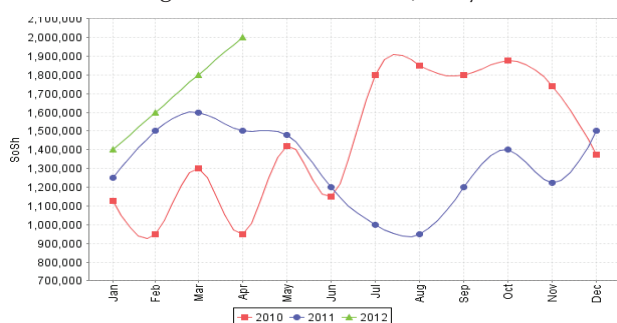


Figure 30: Wheat Flour

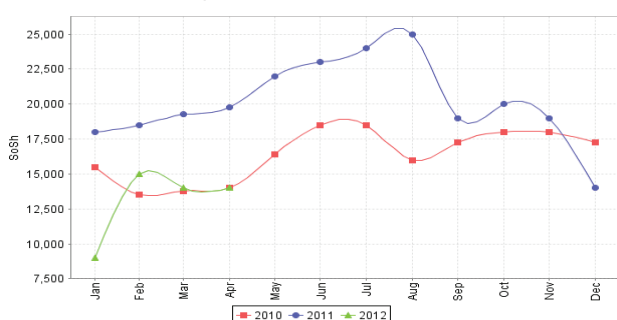


Figure 27: Bakara: Trends in Wage Rates, Staple Cereal Prices and Relative Purchasing Power

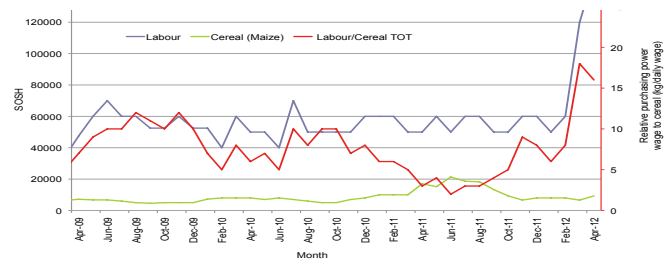


Figure 29: Exchange Rate

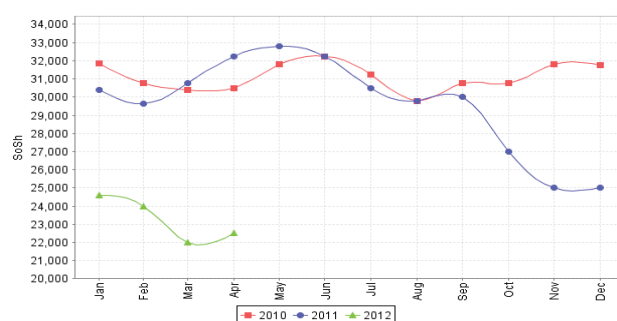
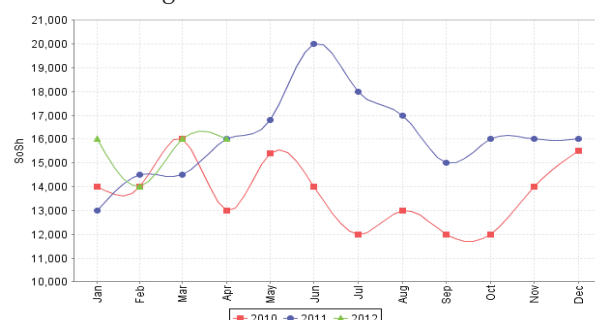


Figure 31: Fresh Camel Milk



Regional analysis: Central Regions

Indicator	Apr-11	Mar-12	Apr-12 Nominal Price	Apr-12 Real (Deflated) Price	% Change Same Month Previous Year	% Change Previous Month	% Change 5-year avg (2003-07)
Imported Commodities Prices							
Diesel 1 litre	36,960	32,600	32,850	13,156	-11%	1%	199%
Imported Red Rice 1kg	29,500	22,767	21,950	8,758	-26%	-4%	184%
Petrol 1 litre	31,650	28,700	29,300	11,724	-7%	2%	124%
Sugar	35,800	28,767	27,450	10,977	-23%	-5%	200%
Vegetable Oil 1 litre	61,770	48,200	48,200	19,351	-22%	0%	159%
Wheat Flour 1kg	24,100	19,100	18,300	7,285	-24%	-4%	132%
Wheat Grain 1kg	22,333	16,667	16,667	6,626	-25%	0%	220%
Cereal Prices							
Red Sorghum 1kg	19,300	14,667	14,550	5,772	-25%	-1%	245%
White Maize 1kg	19,500	15,300	13,900	5,509	-29%	-9%	193%
Livestock & Livestock Product Prices							
Camel Local Quality (Head)	7,960,000	8,912,500	8,762,500	3,535,947	10%	-2%	299%
Cattle Local Quality (Head)	-	2,450,000	2,500,000	1,008,758	2%	2%	64%
Fresh Camel Milk 1 litre	48,240	35,000	38,250	15,336	-21%	9%	217%
Goat Export Quality (Head)	1,575,000	1,434,375	1,550,000	625,392	-2%	8%	319%
Goat Local Quality (Head)	1,150,300	1,250,000	1,257,500	507,356	9%	1%	342%
Other Essential Items							
Charcoal 50kg	214,000	179,667	181,500	73,143	-15%	1%	226%
Cowpeas 1 kg	39,200	30,267	29,600	11,845	-24%	-2%	324%
Unskilled Labor Wage Rate	81,000	89,500	86,000	34,605	6%	-4%	171%
Firewood Bundle	33,900	33,000	33,000	13,217	-3%	0%	739%
Local Sesame Oil 1 litre	94,600	92,000	92,000	37,026	-3%	0%	228%
Exchange Rate (Somali Shilling per USD)	31,135	24,178	23,835	9,518	-23%	-1%	41%
Construction Materials*							
Cement 50kg	327,600	289,500	287,210	115,802	-12%	-1%	-
Cooking Pot Aluminium 7 Litre	404,800	386,667	364,000	146,790	-10%	-6%	-
Galvanised Iron Sheet Ga 26	155,775	140,750	133,800	53,894	-14%	-5%	-
Hollow Concrete Block 10cm x 20cm x 40cm	16,250	15,083	14,750	5,852	-9%	-2%	-
Non Collapsible Jerrycan 10 Litre	51,600	50,600	49,100	19,714	-5%	-3%	-
Plastic Tarpaulin 14m x 5 m	310,000	269,400	274,000	110,471	-12%	2%	-
Roofing Nails 15Kg	811,940	690,000	731,000	294,890	-10%	6%	-
Timber 2in x 4in x 20ft	151,600	122,750	120,000	48,325	-21%	-2%	-
Woven Dry Raised Blanket 150cm x 200cm	134,000	128,000	134,000	53,975	0%	5%	-
Terms of Trade							
Labour Wage (Daily)/ Cereal (Rice(Kg))	3	4	4	-	43%	0%	-4%
Local Goat (Head)/ Cereal (Rice(Kg))	39	55	57	-	47%	4%	56%
Camel (Head)/Cereal (Kg)	270	391	399	-	48%	2%	41%
Price Indices							
Consumer Price Index	285	246	248	-	-13%	1%	-
Purchasing Power Index	0.35	0.41	0.40	-	15%	-1%	-

* Data has been collected since May 2010

Figure 32: Imported commodity prices compared to exchange rates

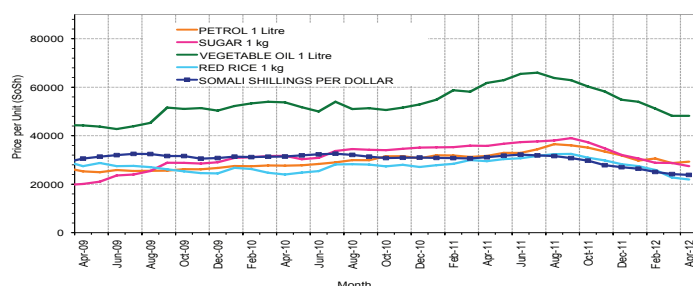


Figure 34: Goat Local Quality

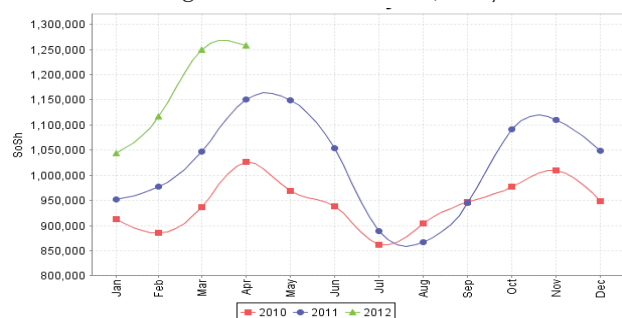


Figure 36: Water Drum

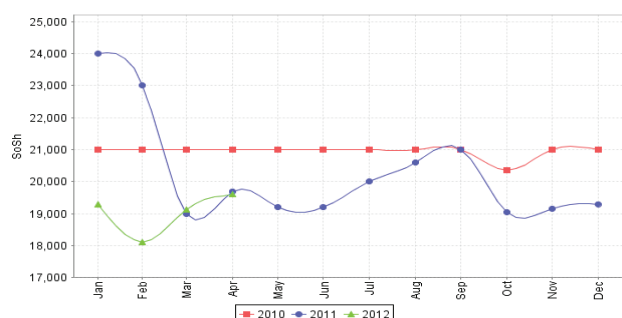


Figure 33: Trends in wage rates, staple cereal prices and relative purchasing power

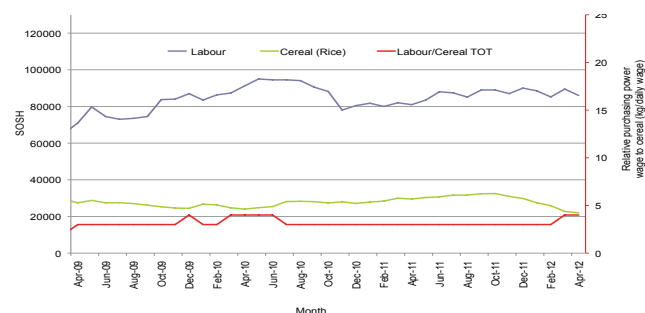


Figure 35: Exchange Rate

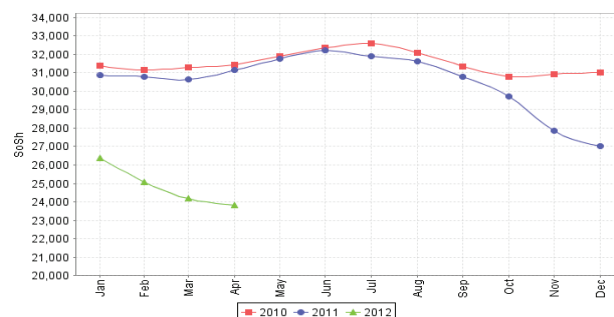
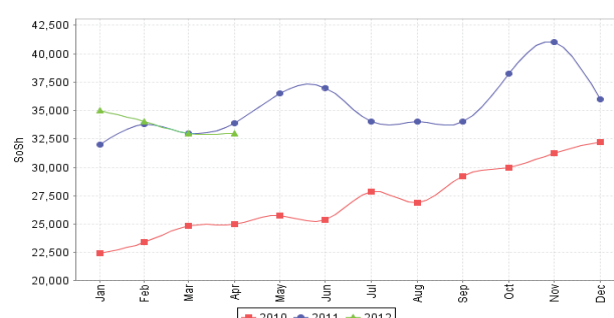


Figure 37: Firewood Bundle



Regional analysis: Northeast Regions

Indicator	Apr-11	Mar-12	Apr-12 Nominal Price	Apr-12 Real (Deflated) Price	% Change Same Month Previous Year	% Change Previous Month	% Change 5-year avrg (2003-07)
Imported Commodities Prices							
Diesel 1 litre	32,070	27,000	28,375	12,405	-12%	5%	217%
Imported Red Rice 1kg	23,400	19,938	20,876	9,100	-11%	5%	227%
Petrol 1 litre	29,975	24,625	25,688	11,220	-14%	4%	160%
Sugar	32,313	25,688	26,063	11,386	-19%	1%	203%
Vegetable Oil 1 litre	51,500	50,063	49,500	21,714	-4%	-1%	181%
Wheat Flour 1kg	22,225	18,313	18,438	8,025	-17%	1%	173%
Wheat Grain 1kg	30,250	25,125	25,125	10,972	-17%	0%	242%
Cereal Prices							
Red Sorghum 1kg	28,000	21,167	23,500	10,256	-16%	11%	248%
White Maize 1kg	21,600	19,750	19,000	8,273	-12%	-4%	264%
Livestock & Livestock Product Prices							
Camel Local Quality (Head)	13,433,750	14,765,626	15,240,626	6,716,317	13%	3%	380%
Cattle Local Quality (Head)	6,075,000	6,250,000	8,375,000	3,690,693	38%	34%	340%
Fresh Camel Milk 1 litre	54,788	40,563	42,250	18,519	-23%	4%	201%
Goat Export Quality (Head)	1,600,000	1,300,000	1,462,500	644,412	-9%	13%	250%
Goat Local Quality (Head)	1,414,625	1,343,750	1,485,000	654,327	5%	11%	285%
Other Essential Items							
Charcoal 50kg	320,688	370,000	365,000	160,752	14%	-1%	417%
Cowpeas 1 kg	45,650	48,917	46,333	20,319	1%	-5%	384%
Unskilled Labor Wage Rate	111,500	112,500	112,500	49,478	1%	0%	151%
Firewood Bundle	31,613	35,750	39,500	17,307	25%	10%	446%
Local Sesame Oil 1 litre	89,438	95,000	96,875	42,592	8%	2%	239%
Exchange Rate (Somali Shilling per USD)	31,638	22,813	24,250	10,587	-23%	6%	42%
Construction Materials*							
Cement 50kg	235,250	215,500	217,000	95,530	-8%	1%	-
Cooking Pot Aluminium 7 Litre	489,375	415,000	467,188	205,786	-5%	13%	-
Galvanised Iron Sheet Ga 26	235,125	203,188	203,500	89,581	-13%	0%	-
Hollow Concrete Block 10cm x 20cm x 40cm	12,250	12,500	13,125	5,684	7%	5%	-
Non Collapsible Jerrycan 10 Litre	35,200	35,313	39,688	17,390	13%	12%	-
Plastic Tarpaulin 14m x 5 m	204,688	170,813	165,625	72,890	-19%	-3%	-
Roofing Nails 15Kg	467,000	412,125	408,875	180,088	-12%	-1%	-
Timber 2in x 4in x 20ft	231,225	206,250	208,250	91,674	-10%	1%	-
Woven Dry Raised Blanket 150cm x 200cm	262,875	236,563	243,313	107,126	-7%	3%	-
Terms of Trade							
Labour Wage (Daily)/ Cereal (Rice(Kg))	5	6	5	-	13%	-4%	-23%
Local Goat (Head)/ Cereal (Rice(Kg))	60	67	71	-	18%	6%	18%
Price Indices							
Consumer Price Index	279	220	227	-	-19%	3%	-
Purchasing Power Index	0.36	0.45	0.44	-	23%	-3%	-

* Data has been collected since May 2010

Figure 38: Imported commodity prices compared to exchange rates

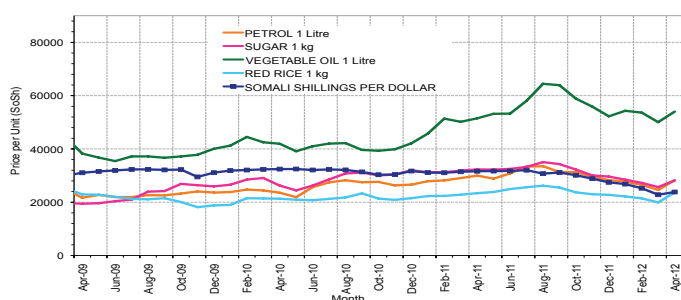


Figure 39: Trends in wage rates, staple cereal prices and relative purchasing power

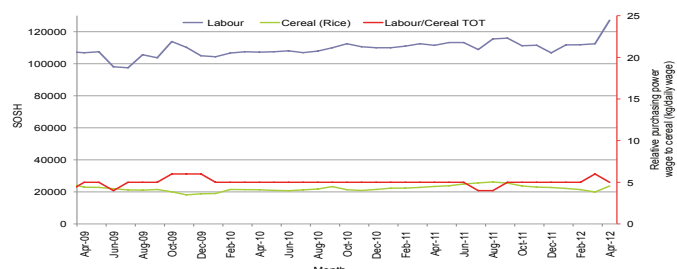


Figure 40: Goat Local Quality

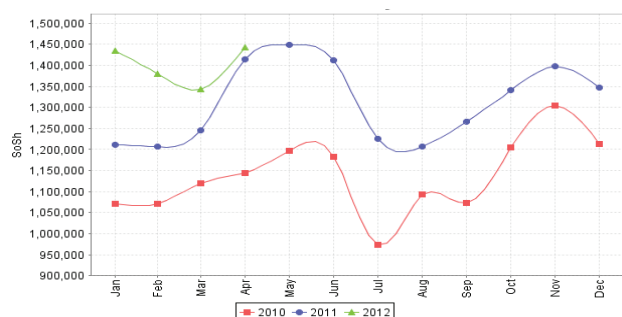


Figure 41: Exchange Rate

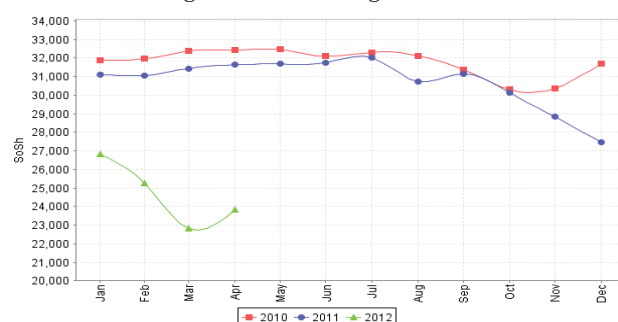


Figure 42: Water Drum

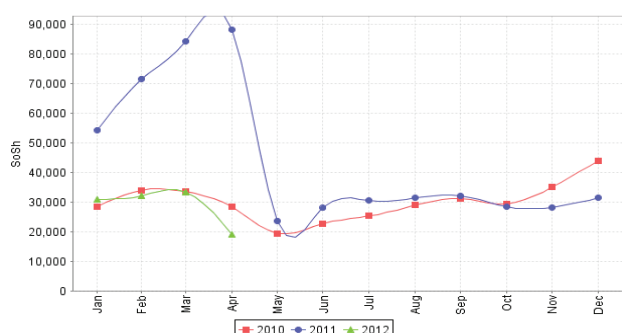
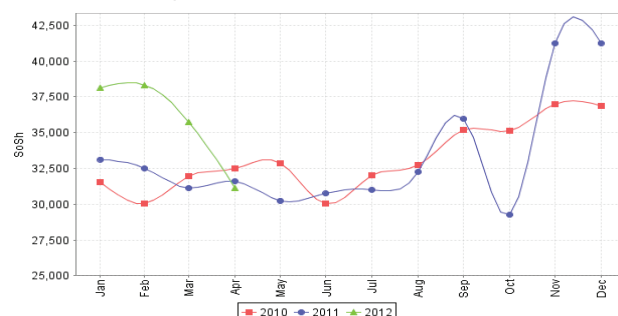


Figure 43: Firewood Bundle



Regional analysis: Northwest Regions

Indicator	Apr-11	Mar-12	Apr-12 Nominal Price	Apr-12 Real (Deflated) Price	% Change Same Month Previous Year	% Change Previous Month	% Change 5-year avrg (2003-07)
Imported Commodities Prices							
Diesel 1 litre	5,650	5,915	6,730	5,391	19%	14%	86%
Imported Red Rice 1kg	5,240	4,460	5,030	4,004	-4%	13%	64%
Petrol 1 litre	5,625	6,270	7,260	5,823	29%	16%	61%
Sugar	6,010	5,925	5,980	4,779	0%	1%	76%
Vegetable Oil 1 litre	9,870	11,473	12,150	9,813	23%	6%	66%
Wheat Flour 1kg	4,145	4,070	4,320	3,425	4%	6%	46%
Wheat Grain 1kg	3,225	3,375	3,075	2,409	-5%	-9%	52%
Cereal Prices							
White Sorghum 1kg	3,190	3,640	3,480	2,739	9%	-4%	95%
Yellow Maize 1kg	2,818	3,408	4,012	3,173	42%	18%	108%
Livestock & Livestock Product Prices							
Camel Local Quality (Head)	1,470,000	2,635,833	2,310,000	1,884,562	57%	-12%	67%
Cattle Local Quality (Head)	1,257,917	1,617,500	2,225,833	1,815,892	77%	38%	181%
Fresh Camel Milk 1 litre	5,360	6,175	6,200	4,958	16%	0%	24%
Goat Export Quality (Head)	337,900	396,750	383,550	312,827	14%	-3%	118%
Goat Local Quality (Head)	245,225	295,150	298,000	243,030	22%	1%	98%
Other Essential Items							
Charcoal 50kg	31,225	37,450	37,300	30,332	19%	0%	81%
Cowpeas 1 kg	8,500	10,313	11,125	8,977	31%	8%	134%
Unskilled Labor Wage Rate	30,250	36,000	37,700	30,658	25%	5%	36%
Firewood Bundle	2,475	2,833	3,167	2,484	28%	12%	-43%
Local Sesame Oil 1 litre	21,469	25,250	24,625	19,991	15%	-2%	40%
Exchange Rate (Somaliland Shilling per USD)	6,000	6,248	6,495	5,199	8%	4%	-4%
Construction Materials*							
Cement 50kg	44,950	48,181	51,032	41,536	14%	6%	-
Cooking Pot Aluminium 7 Litre	95,850	111,250	95,600	77,897	0%	-14%	-
Galvanised Iron Sheet Ga 26	46,438	44,000	43,300	35,227	-7%	-2%	-
Hollow Concrete Block 10cm x 20cm x 40cm	3,380	2,613	2,900	2,266	-14%	11%	-
Non Collapsible Jerrycan 10 Litre	7,045	5,700	6,500	5,203	-8%	14%	-
Plastic Tarpaulin 14m x 5 m	61,625	78,700	90,200	73,492	46%	15%	-
Roofing Nails 15Kg	157,950	161,500	188,300	153,528	19%	17%	-
Timber 2in x 4in x 20ft	120,750	122,000	113,267	92,311	-6%	-7%	-
Woven Dry Raised Blanket 150cm x 200cm	70,800	77,438	75,625	61,600	7%	-2%	-
Terms of Trade							
Labour Wage (Daily)/ Cereal (Rice(Kg))	6	8	7	-	30%	-7%	-17%
Local Goat (Head)/ Cereal (Rice(Kg))	47	66	59	-	27%	-10%	21%
Price Indices							
Consumer Price Index	118	117	123	-	4%	5%	-
Purchasing Power Index	0.85	0.85	0.82	-	-4%	-4%	-

* Data has been collected since May 2010

Figure 44: Imported commodity prices compared to exchange rates

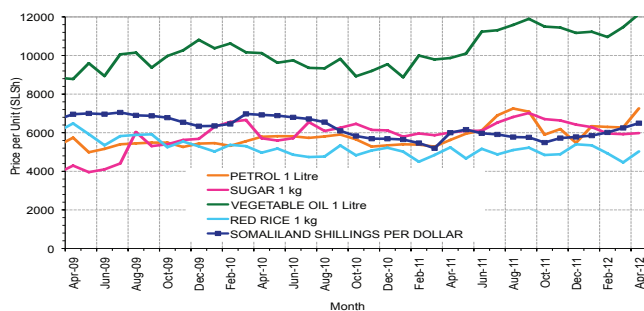


Figure 46: Goat Local Quality

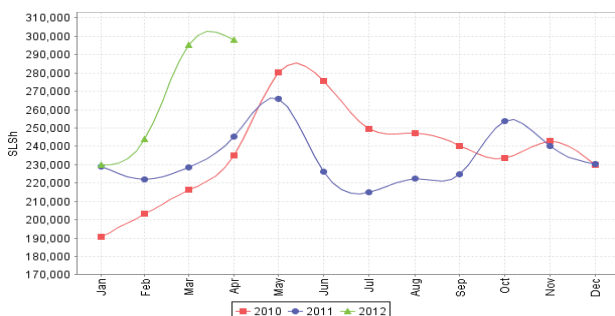


Figure 48: Water Drum

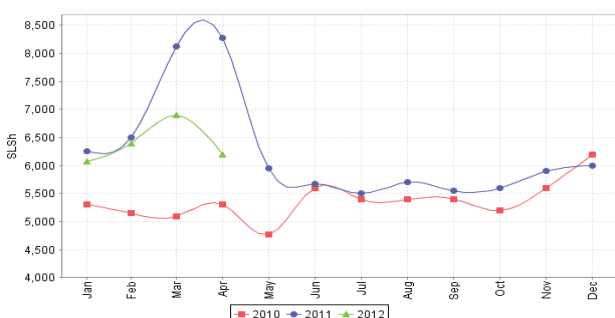


Figure 45: Trends in wage rates, staple cereal prices and relative purchasing power

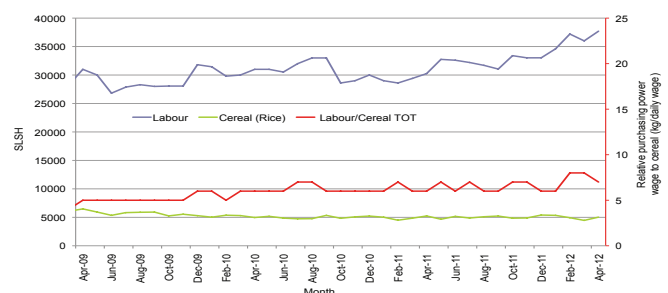


Figure 47: Exchange Rate

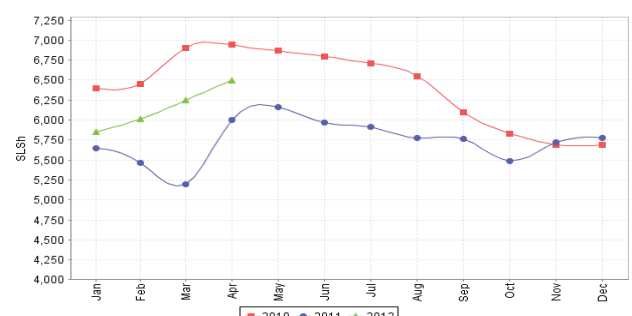
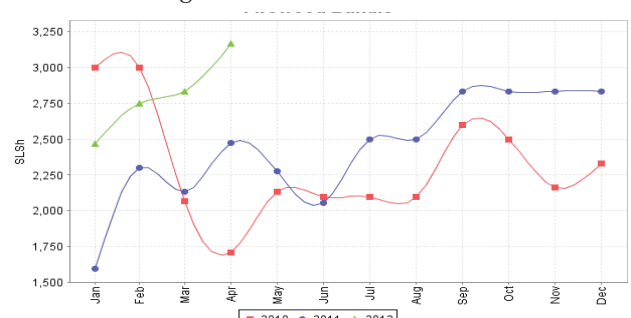


Figure 49: Firewood Bundle



Trends in Livestock Exports

Table 2: Berbera Livestock Exports (Number of Heads)

	1994	1995	1996	1997	1998	1999	2000	2001	2002	2003	2004	2005	2006	2007	2008	2009	2010	2011	2012 (Jan-Mar)
Shoats	1,572,656	2,683,597	2,376,646	2,814,495	957,224	2,048,136	1,601,083	51,546	341,711	563,107	859,404	1,023,795	1,017,242	1,350,054	1,219,519	1,556,003	2,584,810	3,104,684	460,950
Cattle	173,400	167,128	65,127	66,939	92,213	89,967	63,263	20,973	37,547	84,312	131,852	148,151	85,631	88,143	80,051	88,005	133,021	150,934	53,205
Camel	38,553	21,993	42,801	50,587	11,663	37,430	16,984	3,473	18,864	21,874	5,147	5,069	22,810	14,245	26,515	20,206	92,651	107,281	30,180

Figure 50: Berbera Livestock Exports (Number of Heads)

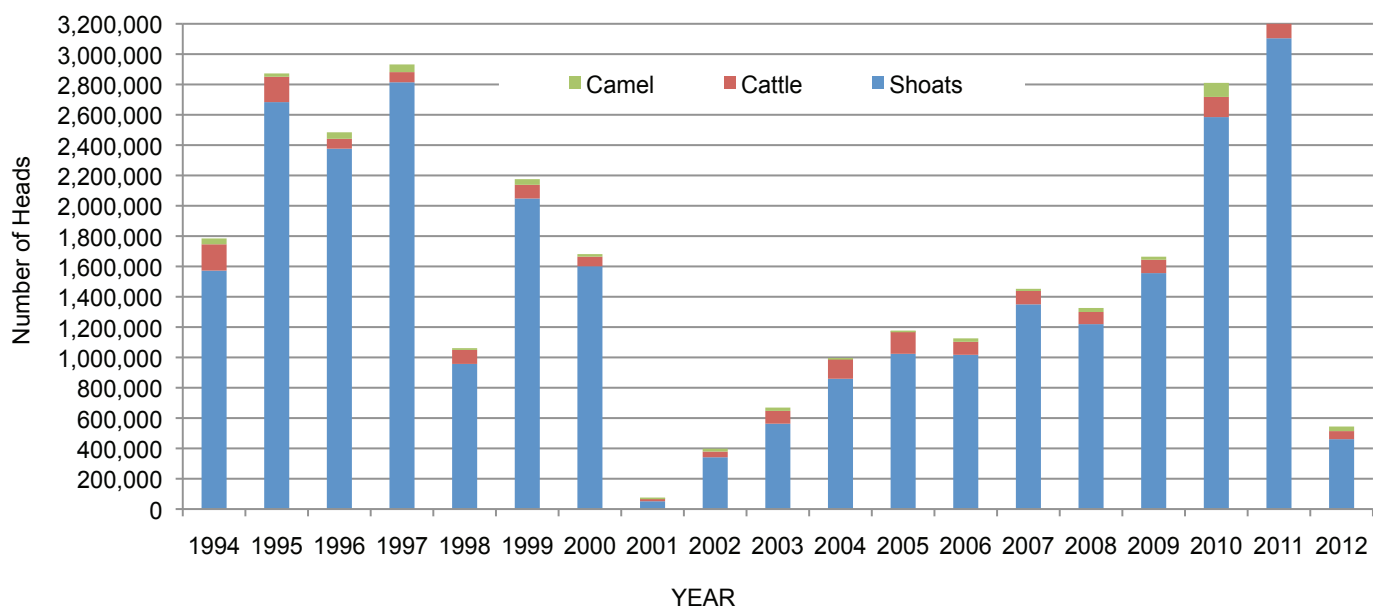


Table 3: Bossaso Livestock Exports (Number of Heads)

	1994	1995	1996	1997	1998	1999	2000	2001	2002	2003	2004	2005	2006	2007	2008	2009	2010	2011	2012 (Jan-Mar)
Shoats	344,000	524,346	614,407	494,320	517,020	633,669	571,455	548,853	1,412,450	1,483,409	1,166,480	1,594,859	1,777,283	1,522,855	1,236,775	1,159,454	1,333,478	1,256,535	249,200
Cattle	1,450	8,795	15,335	17,831	29,492	36,586	27,604	42,248	53,313	71,328	79,994	91,910	104,595	89,190	78,046	67,385	103,808	99,058	17,923
Camel	5,397	8,392	20,462	14,599	3,938	15,544	8,177	1,950	9,720	4,259	2,488	26,109	33,724	27,580	27,639	15,331	36,865	45,878	4,770

Figure 51: Bossaso Livestock Exports (Number of Heads)

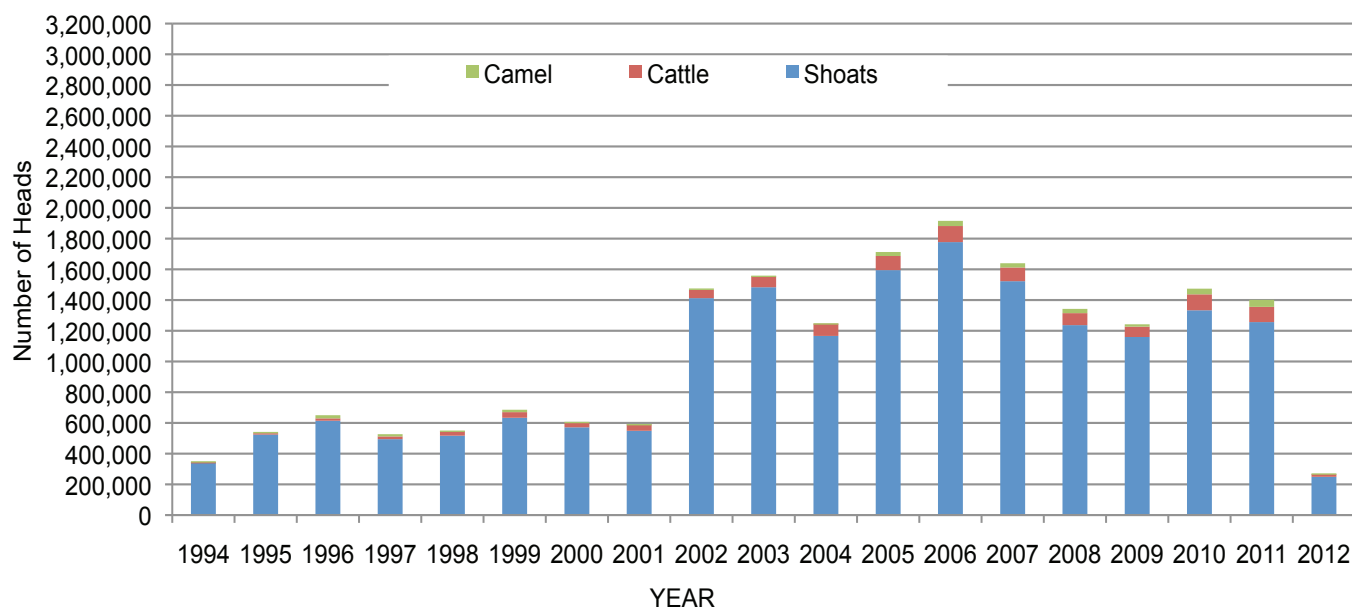


Table 4: Total Cereal Imports (Berbera,Bossaso,Elmaan)

	1997	1998	1999	2000	2001	2002	2003	2004	2005	2006	2007	2008	2009	2010	2011	2012 (Jan-Mar)
Rice	66,419	43,410	63,464	75,687	74,729	144,600	180,614	146,567	150,017	198,101	166,626	136,007	171,472	161,415	272,877	130,096
Wheat Flour	35,143	26,774	55,176	78,555	134,425	128,263	171,442	151,555	169,583	178,345	176,821	169,208	240,247	249,080	258,679	63,507
Pasta	2,510	2,455	8,544	11,071	26,702	35,425	29,273	38,749	39,153	52,815	41,331	38,441	86,372	102,373	184,849	82,805

Figure 52: Total Cereal Imports (Berbera,Bossaso and Elmaan)

