

Market Data Update

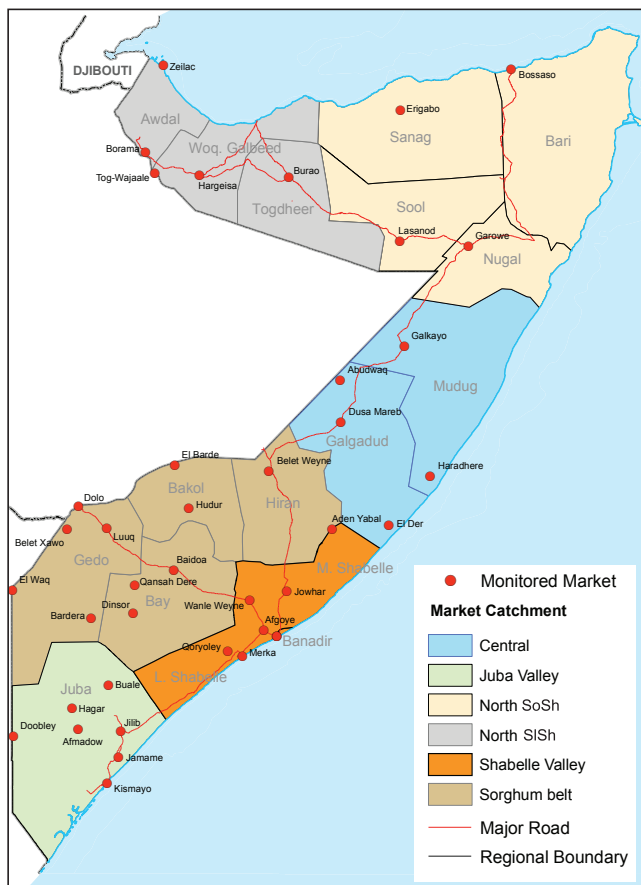


Food Security and Nutrition Analysis Unit - Somalia



Monthly Market Analysis, April 2011

Highlights



In April 2011, the Consumer Price Index (CPI), which is based on a fixed minimum basket of goods and services, increased by 3-5 percent in the Northeast and Central and 11 percent in the South, while retaining relative stability in the Northwest. Compared to the same month a year ago, the inflation is 20-45 percent higher in Somali Shilling (SoSh) zones, while stable in Somaliland Shilling (SiSh) zones. However, compared to the base year (March 2007) the inflation is considerable (159-185%) in SoSh areas: it is only 14 percent higher in SiSh zone.

In the last month, the prices of locally produced cereals increased by 23-33 percent across the main markets of all regions apart from Lower Juba (9% increase for the white maize price). The price increments in the current hunger period are substantially higher than the same time last year due to dwindling grain stocks held by producers and traders, high demand, rising transport costs, as well as stock hoarding by retailers and farmers due to uncertainty in the *Gu* 2011 harvest. **Since April last year, the red sorghum prices have more than doubled (137-183%) in all regions of the Sorghum Belt. The white maize prices are also considerably higher than a year ago in producing regions of Shabelle (73%) and Juba (92%).**

Imported commodity (rice, sugar, wheat flour, vegetable oil and petrol) prices have not changed significantly in April with the exception of rice, sugar and petrol in Sorghum Belt. However, the prices of all imported commodities are generally higher compared to a year ago in most monitored markets. In addition to increased international prices, the current price increases are driven by several factors, including increased taxation by multiple authorities and freelance militias, ripple effect of increased diesel prices (inflating transportation costs) as well as continuous trade disruptions in south-central zones caused by the volatile security situation.

Livestock prices showed a mixed trend in April 2011, with slight monthly increases and cases of stability, although they are significantly lower when compared to the same month last year. The monthly increase in livestock prices is attributable to undersupply, occasioned by lack of saleable animals due to the ongoing drought conditions. This has also resulted in low milk supplies and increased milk prices in most of the regions. Further, water prices exhibited marginal monthly increases (3-7%) across Somalia in April. However, the prices are significantly higher when compared to the same month last year, due to depleting water resources and intensified water resource competition caused by prolonged dry conditions. Prices of other essential items exhibited mixed trends.

Labour wages remained relatively stable throughout April 2011 in most regions. Faced with rising prices of grains, the peoples' purchasing power is greatly eroded. The terms of trade (ToT) between daily labour wage and local cereals declined across the country. Only 4 kg of local cereals could be purchased with one day of labour across the country in April, with the exception of Northwest where the ToT was equivalent to 9kg. Annual comparison of the ToT indicates considerable declines in the South-Central: one third of the levels a year ago in the Sorghum Belt and Juba regions; 50 percent decrease in Central and Shabelle regions. In the Northeast, the annual decline in ToT (labour wage to red sorghum) is moderate, while it has increased in the Northwest (labour wage to white sorghum).

Exchange rates between USD to Somali Shilling (SoSh) and Somaliland Shilling (SiSh) remained relatively stable in April with a slight depreciation observed in Somaliland. However, SiSh gained significant value (13%) when compared to April 2010, mainly due to Government control of the local currency. The SoSh remained stable in the same period of comparison.

Regional Highlights

Juba Valley: prices of most monitored commodities remained generally stable in the past one month except for maize, charcoal and firewood, which accelerated from their March 2011 levels. The marginal decline in casual labour wage rate and increased maize price have dropped ToT between labour and maize by 15 and 68 percent from the previous month (Mar '11) and last year (Apr '10), respectively.

Sorghum Belt: prices of most imported commodities, local cereals and milk rose rapidly in April. The exceptions are camel and goat prices and labour wage rates for which prices declined from Mar' 2011. Rising cereal prices and falling wage rates led to a considerable decline of the ToT (29%).

Shabelle Valley: prices of most monitored commodities remained stable over the month of April 2011. However, cattle prices declined in most markets whereas milk, cereal and diesel prices escalated at varying levels. Stability in labour wage rates and rising cereal prices over the month of April 2011 reduced the ToT to about half of its levels a year ago.

Central: labour wage rates remained generally stable in the zone, while changes in the prices of rice and a local quality goat and other items over the past one month were marginal. Therefore, a slight improvement was observed in the terms of trade between goat and imported red rice. However, the amount of rice that a local quality goat can fetch is still lower compared to the amount of red sorghum. Sorghum and milk prices have risen sharply.

Northeast: with the exception of goat and sorghum prices, which rose by 14-32 percent over the last month, all other key monitored commodities remained generally stable in April 2011. Lack of saleable animals undermined the growth in ToT between goat and imported rice.

Northwest: prices of imported commodities are stable except those of cereals, goat, camel and firewood, which rose by 16-25 percent. The ToT of daily labour wage to red rice has remained almost unchanged in April, but is still significantly lower than the ToT of daily labour wage to local cereals.

Banadir: local cereal prices increased significantly (26-35%) when compared to the previous month. However, imported food commodity prices remained stable in April.

This Market Data Update is a monthly report that presents a compilation of tabulated graphical market information produced regularly as part of the monthly monitoring process.

The weekly price data is collected from 44 main markets throughout Somalia since 1995.

The 5-year period of 2003-07 was characterised by fairly stable prices and relatively low inflation. In this bulletin these years are used as a reference period for seasonal trends comparison.

Market analysis is an integral part of all of FSNAU's Annual Food Security Projections and seasonal technical reports (Technical Reports on FSNAU Post *Gu* and *Deyr* Analysis).

This data is available online on www.fsnaui.org/ids.

Technical and Managerial Support

Funding Agencies



International Market Highlights

Diesel: Abu Dhabi/Dubai crude oil prices,¹ the main source of oil imports into Somalia, maintained an upward trend since October 2010 to reach \$115 per barrel in April 2011. The current price indicates increases of 5 and 39 percent compared to the previous month and the same month last year, respectively. The international oil prices are expected to continue rising in the short-run, as long as supply interruptions² occasioned by the political unrest and conflict in the oil-rich Middle East and North Africa regions persist. International oil price transmission is clearly manifested in Somalia where current diesel prices in the main port cities of Mogadishu and Bossaso are 25 and 35 percent higher than the same month last year, respectively. Diesel prices remained stable from the previous month in Bossasso, while increasing by 17 percent in Mogadishu. The different trends in the prices in these two cities are mainly due to high levels of insecurity and multiple taxation regimes in Mogadishu as opposed to Bossaso. Domestic diesel prices are projected to remain high in the short-run due to poor supply and infrastructural constraints in Somalia, in addition to high international oil prices.

Rice: International export prices of rice³ declined marginally (1%) between March and April 2011, to an average of USD 423 per metric ton. The decrease mainly reflects ample export supplies following the recent harvests in the main exporting countries in Asia⁴. At the current levels, rice prices are nearly 25 percent higher than a year ago but 45 percent below their peak in May 2008. In line with international price transmission, retail prices of imported rice in Mogadishu and Bossaso cities remained relatively stable in April 2011. Nevertheless, the prices in these two main port cities are 17-19 percent higher compared to April 2010 prices. International rice prices are projected to continue remaining steady in the short-run as exportable surplus is adequate⁵. Rice price developments in the coming months in the domestic market will however rely heavily on trends in import freight and insurance charges, formal and informal taxation levels, prices of local cereals and international crude oil prices.

Sugar: FAO sugar price index averaged nearly 348 points in April 2011, down 7 percent from March and 17 percent below of its record levels in January 2011. The index is however significantly (49%) above its level in April 2010. The international price development of the last month has not yet passed through to domestic markets of Somalia where sugar prices (Mogadishu and Bossaso) remained stable during April. The prospects of improved outlook in sugar production by the key world producers, India, Thailand and Brazil, is favorable⁶, which is likely to reverse the two year long deficit. However, further direction of the international prices will be gauged from the developments in the next six months. According to ISO, the indications are that Brazil is likely to start off-loading its sugar surplus into the international market⁷.

Cooking oil: The FAO Oils/Fats Price Index, which had fallen by seven percent in March, was nearly unchanged in April. In contrast, the index is 49 percent above compared to April last year. International price transmission of this commodity are clearly manifested in the local markets as cooking oil is currently 41-46 percent higher than it was one year ago in Bossaso and Mogadishu port cities.

Figure 1: Comparison of Diesel Prices: International (Asia Dubai), Mogadishu and Bossasso

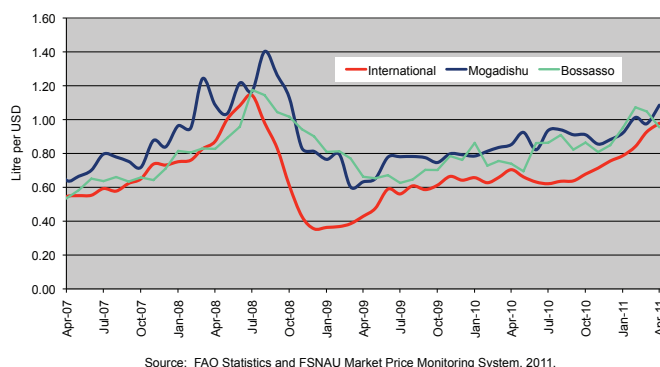


Figure 2: Comparison of Rice Prices: International (Bangkok FOB), Mogadishu and Bossasso

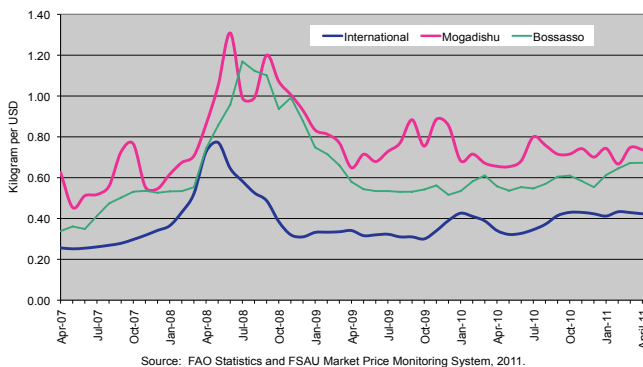
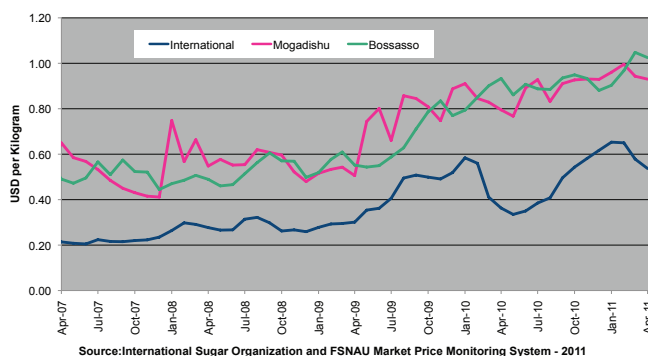


Figure 3: Comparison of Sugar Prices: International (ISO), Mogadishu and Bossasso



1 Weekly Abu Dhabi Murban Spot Price FOB (Dollars per Barrel), US Energy Information Administration, http://www.eia.doe.gov/dnav/pet/pet_pri_wco_k_w.htm

2 The halt in exports from Libya have also raised concerns that supply may also be interrupted elsewhere

3 Bangkok, Rice (Thai A1 Super 1/ B), Export, US Dollar, Tonne, FAO GIEWS 2011

4 FAO Global Food Price Monitor, May 5th 2011

5 FAO Global Food Price Monitor, May 5th 2011; FAO Global Food Outlook (Nov 2010) had indeed projected the global rice output this season to reach a record level, sufficient to cover world consumption

6 International Sugar Organization (ISO), Market Report and Progress Summary, March 2011

7 International Sugar Organization (ISO), Market Report and Progress Summary, March 2011

National Trends in Market Prices

Figure 4: Relative Purchasing Power for Selected Regions
(Terms of Trade between wage rates and selected cereals)

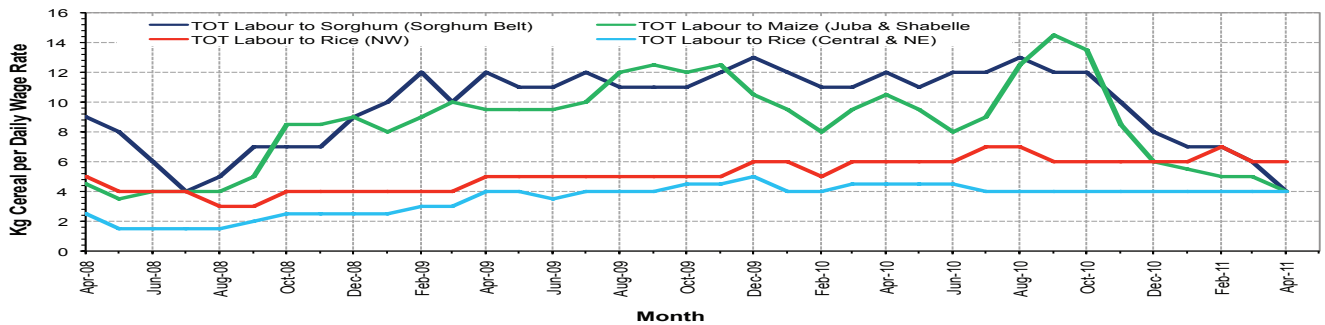


Figure 5: Monthly Exchange Rate for Selected Regions (SoSh and SSh to USD)

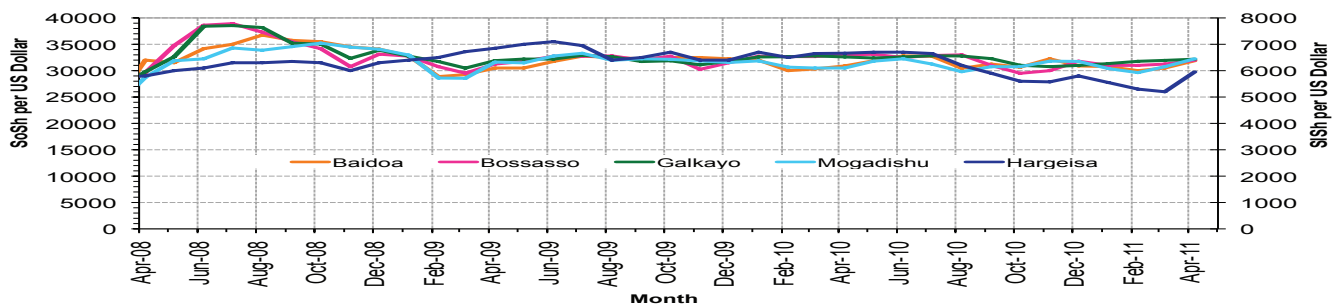


Figure 6: Monthly Trends in Consumer Price Index (CPI)

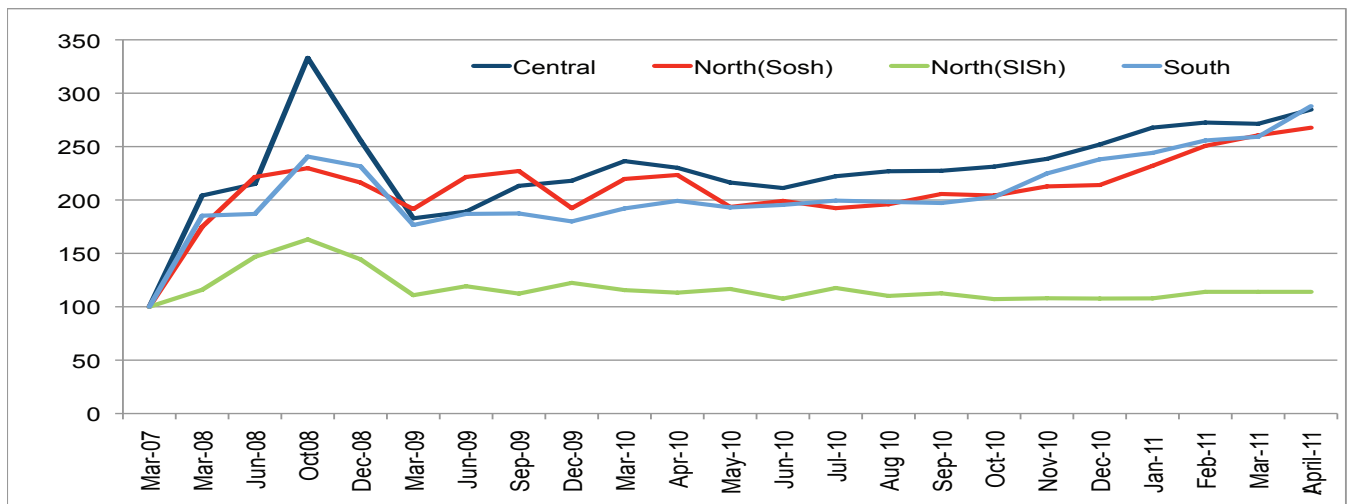
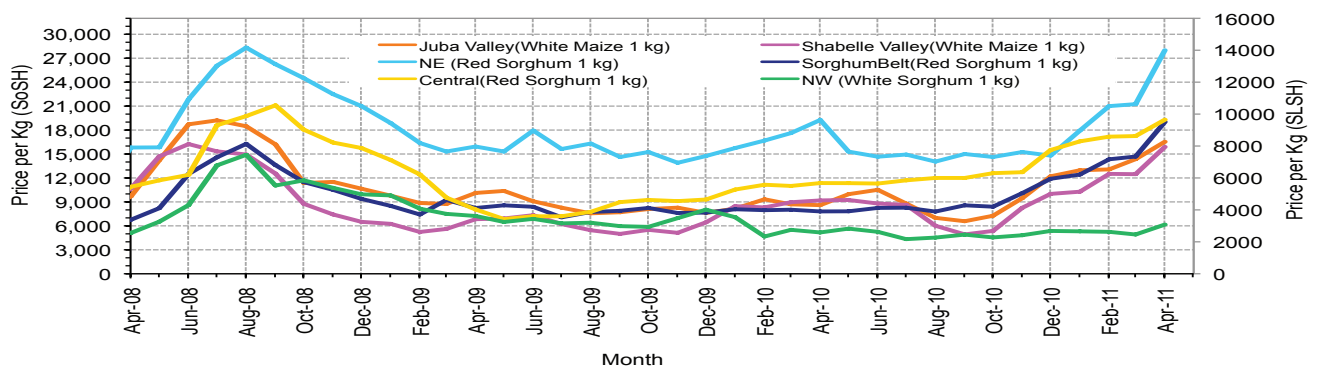


Figure 7: Monthly Trends in Cereal Prices



Regional analysis: Juba Regions

Indicator	5-Year Average	Apr-10	Mar-11	Current Nominal Price	Current Real (Deflated) Price	% Change Same Month Previous Year	% Change Previous Month	% Change 5-year avrg (2003-07)
Imported Commodities Prices								
Diesel 1 litre	12,689	29,929	33,500	34,143	11,755	14%	2%	169%
Imported Red Rice 1kg	8,043	20,250	22,250	32,643	8,109	17%	6%	194%
Petrol 1 litre	15,580	32,286	33,714	32,786	11,284	2%	-3%	110%
Sugar	8,735	24,964	30,571	32,393	11,148	30%	6%	271%
Vegetable Oil 1 litre	18,128	46,248	54,786	57,321	19,803	24%	5%	216%
Wheat Flour 1kg	8,191	18,143	19,571	21,571	7,390	19%	10%	163%
Wheat Grain 1kg	7,750	14,000	16,000	16,000	5,456	14%	0%	106%
Cereal Prices								
Red Sorghum 1kg	2,309	10,000	-	-	-	-	-	-
White Maize 1kg	2,898	8,595	14,357	16,536	5,642	92%	15%	471%
Livestock & Livestock Product Prices								
Camel Local Quality (Head)	3,107,484	8,621,334	6,922,917	7,537,500	2,617,088	-13%	9%	143%
Cattle Local Quality (Head)	1,450,966	4,038,450	1,957,500	2,050,000	711,706	-49%	5%	41%
Fresh Camel Milk 1 litre	6,823	18,667	27,907	26,786	9,201	43%	-4%	293%
Goat Export Quality (Head)	423,549	1,225,714	865,625	916,429	318,105	-25%	6%	116%
Goat Local Quality (Head)	298,108	795,964	522,857	568,929	197,445	-29%	9%	91%
Other Essential Items								
Charcoal 50kg	29,904	86,071	62,143	69,286	23,958	-20%	11%	132%
Cowpeas 1 kg	7,538	24,792	27,321	28,500	9,796	15%	4%	278%
Unskilled Labor Wage Rate	35,611	108,679	67,143	65,893	22,780	-39%	-2%	85%
Firewood Bundle	2,636	6,393	6,143	6,714	2,231	5%	9%	155%
Local Sesame Oil 1 litre	20,318	71,375	78,250	75,893	26,252	6%	-3%	274%
Exchange Rate (Somali Shilling per USD)	15,985	30,480	30,423	31,484	10,832	3%	3%	97%
Construction Materials*								
Cement 50kg	-	375,714	364,643	330,500	114,657	-12%	-9%	-
Cooking Pot Aluminium 7 Litre	-	450,000	322,500	324,167	112,458	-28%	1%	-
Galvanised Iron Sheet Ga 26	-	147,413	163,393	159,375	55,239	8%	-2%	-
Hollow Concrete Block 10cm x 20cm x 40cm	-	19,250	19,250	18,750	6,410	-5%	-3%	-
Non Collapsible Jerrycan 10 Litre	-	28,000	27,500	27,500	9,449	-2%	0%	-
Plastic Tarpaulin 14m x 5 m	-	700,000	600,000	600,000	208,233	-14%	0%	-
Roofing Nails 15Kg	-	799,286	804,286	804,286	279,166	1%	0%	-
Timber 2in x 4in x 20ft	-	309,750	324,000	340,000	117,956	10%	5%	-
Woven Dry Raised Blanket 150cm x 200cm	-	233,334	-	100,000	34,622	-57%	-	-
Terms of Trade								
Labour Wage (Daily)/ Cereal (Maize(Kg))	12	13	5	4	4	-68%	-15%	-68%
Local Goat (Head)/ Cereal (Maize(Kg))	103	93	36	34	35	-63%	-6%	-67%
Price Indices								
Consumer Price Index	-	199	259	288	-	45%	11%	-
Purchasing Power Index	-	0.50	0.39	0.35	-	-31%	-10%	-

* Data has been collected for the past 11 months only

Figure 8: Imported commodity prices compared to exchange rates

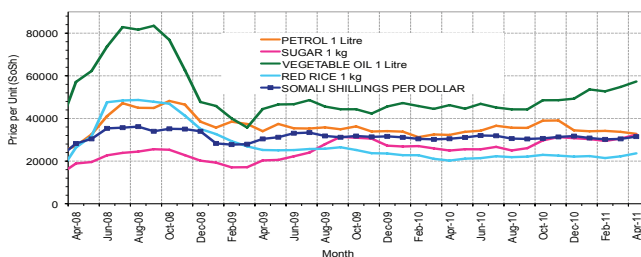
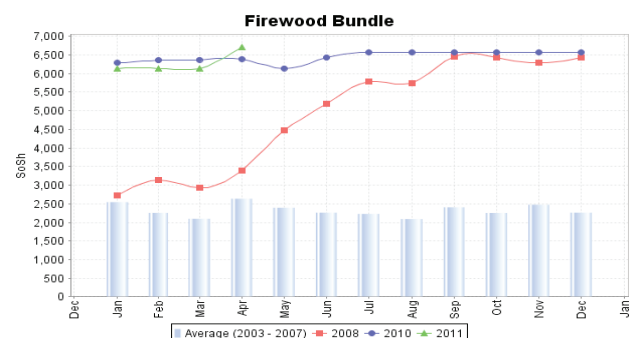
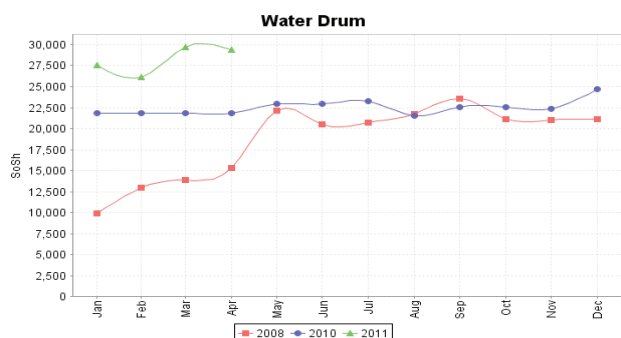
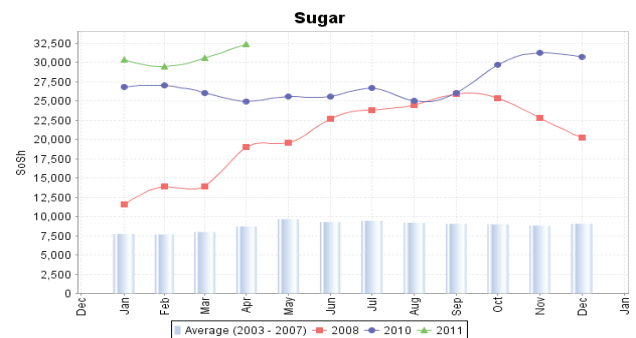
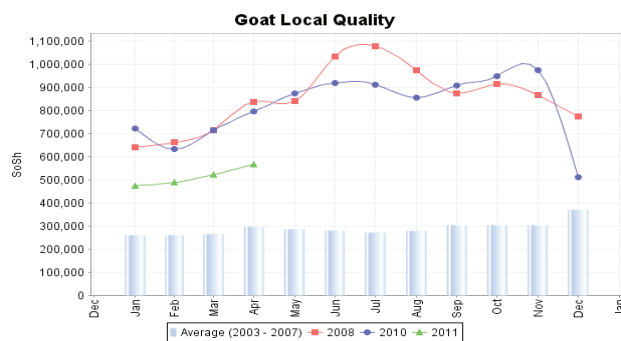
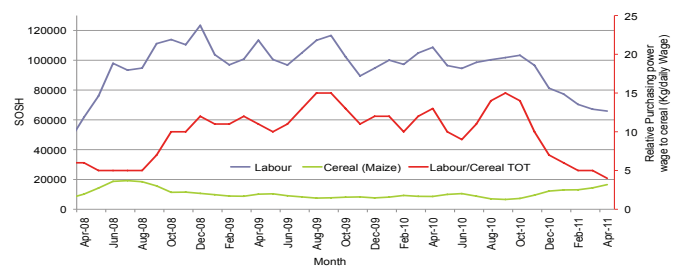


Figure 9: Trends in wage rates, staple cereal prices and relative purchasing power



Regional analysis: Sorghum Belt Regions

Indicator	5-Year Average	Apr-10	Mar-11	Current Nominal Price	Current Real (Deflated) Price	% Change Same Month Previous Year	% Change Previous Month	% Change 5-year avg (2003-07)
Imported Commodities Prices								
Diesel 1 litre	11,815	29,955	35,886	40,273	13,884	34%	12%	241%
Imported Red Rice 1kg	8,457	23,591	24,500	28,682	9,859	22%	17%	239%
Petrol 1 litre	14,770	30,023	33,114	37,795	13,023	26%	14%	156%
Sugar	9,391	26,591	32,114	33,750	11,619	27%	5%	259%
Vegetable Oil 1 litre	18,442	43,341	53,750	61,227	21,159	41%	14%	232%
Wheat Flour 1kg	8,261	19,500	21,114	23,773	8,155	22%	13%	188%
Wheat Grain 1kg	3,769	11,875	17,000	18,563	6,345	56%	9%	393%
Cereal Prices								
Red Sorghum 1kg	1,694	7,808	14,682	19,025	6,506	144%	30%	1023%
White Maize 1kg	2,536	10,719	13,764	16,875	5,759	57%	23%	565%
Livestock & Livestock Product Prices								
Camel Local Quality (Head)	3,163,128	9,025,910	7,270,455	6,363,637	2,209,496	-29%	-12%	101%
Cattle Local Quality (Head)	1,352,259	3,327,500	1,198,929	1,420,625	493,173	-57%	18%	5%
Fresh Camel Milk 1 litre	6,902	15,614	26,727	30,500	10,490	95%	14%	342%
Goat Export Quality (Head)	395,002	1,306,818	1,080,000	976,250	338,876	-25%	-10%	147%
Goat Local Quality (Head)	262,325	773,864	513,409	517,045	179,430	-33%	1%	97%
Other Essential Items								
Charcoal 50kg	38,402	133,205	112,614	110,455	38,252	-17%	-2%	188%
Cowpeas 1 kg	5,438	25,075	31,406	36,375	12,530	45%	16%	569%
Unskilled Labor Wage Rate	20,024	90,909	86,932	80,227	27,757	-12%	-8%	301%
Firewood Bundle	1,746	5,273	5,091	5,182	1,699	-2%	2%	197%
Local Sesame Oil 1 litre	21,181	73,000	78,141	79,500	27,504	9%	2%	275%
Exchange Rate (Somali Shilling per USD)	16,303	30,711	31,043	31,414	10,808	2%	1%	93%
Construction Materials*								
Cement 50kg	-	327,780	349,250	346,250	120,126	6%	-1%	-
Cooking Pot Aluminium 7 Litre	-	277,500	339,500	335,000	116,219	21%	-1%	-
Galvanised Iron Sheet Ga 26	-	202,173	210,227	208,500	72,296	3%	-1%	-
Hollow Concrete Block 10cm x 20cm x 40cm	-	8,250	9,625	9,500	3,199	15%	-1%	-
Non Collapsible Jerrycan 10 Litre	-	48,091	51,955	52,455	18,114	9%	1%	-
Plastic Tarpaulin 14m x 5 m	-	331,750	305,278	306,944	106,478	-7%	1%	-
Roofing Nails 15Kg	-	775,375	829,722	836,000	290,178	8%	1%	-
Timber 2in x 4in x 20ft	-	232,875	268,929	261,071	90,550	12%	-3%	-
Woven Dry Raised Blanket 150cm x 200cm	-	113,000	100,833	90,000	31,150	-20%	-11%	-
Terms of Trade								
Labour Wage (Daily) / Cereal (Sorghum(Kg))	12	12	6	4	4	-64%	-29%	-64%
Local Goat (Head) / Cereal (Sorghum(Kg))	155	99	35	27	28	-73%	-22%	-82%
Price Indices								
Consumer Price Index	-	199	259	288	-	45%	11%	-
Purchasing Power Index	-	0.50	0.39	0.35	-	-31%	-10%	-

* Data has been collected for the past 11 months only

Figure 10: Imported commodity prices compared to exchange rates

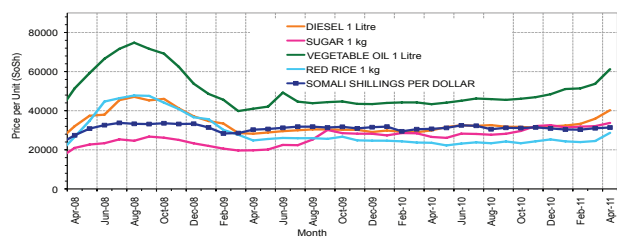
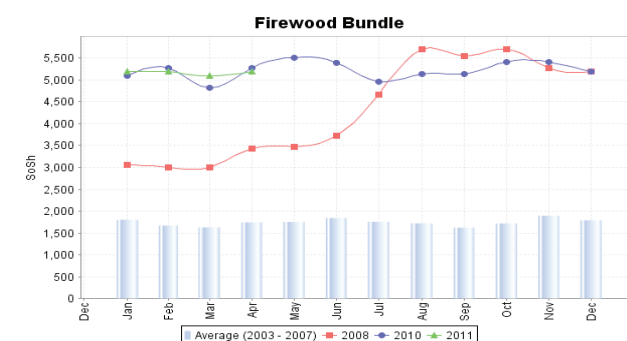
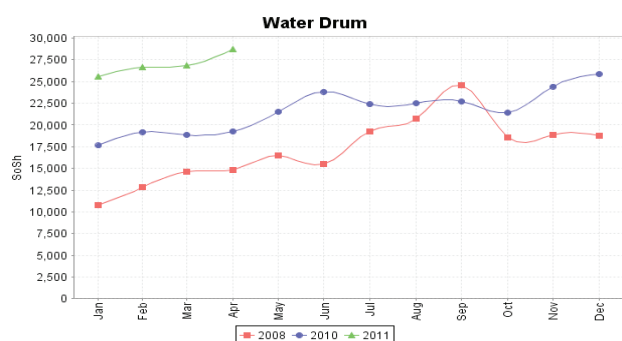
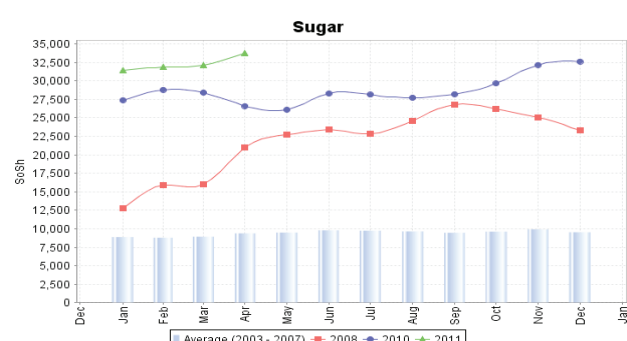
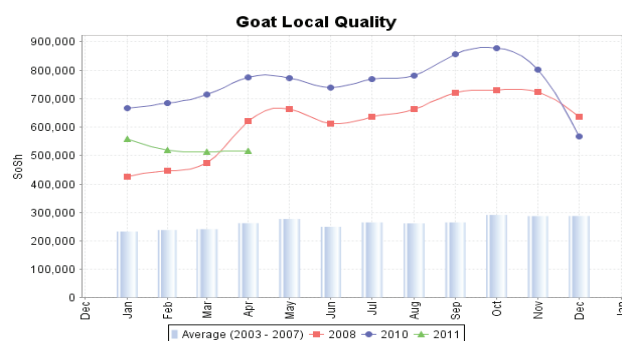
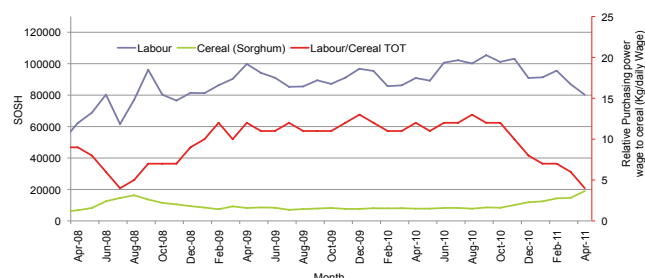


Figure 11: Trends in wage rates, staple cereal prices and relative purchasing power



Regional analysis: Shabelle Regions

Indicator	5-Year Average	Apr-10	Mar-11	Current Nominal Price	Current Real (Deflated) Price	% Change Same Month Previous Year	% Change Previous Month	% Change 5-year avrg (2003-07)
Imported Commodities Prices								
Diesel 1 litre	9,194	28,625	31,875	36,000	12,400	26%	13%	292%
Imported Red Rice 1kg	6,879	20,750	20,000	21,675	7,426	4%	8%	215%
Petrol 1 litre	14,204	29,625	31,542	31,792	10,939	7%	1%	124%
Sugar	7,786	25,167	29,750	30,958	10,649	23%	4%	298%
Vegetable Oil 1 litre	13,578	35,000	47,833	51,458	17,767	47%	8%	279%
Wheat Flour 1kg	6,635	14,750	19,000	21,542	7,380	46%	13%	225%
Wheat Grain 1kg	4,299	-	-	-	-	-	-	-
Cereal Prices								
Red Sorghum 1kg	2,183	8,564	14,389	17,319	5,914	102%	20%	693%
White Maize 1kg	2,968	9,187	12,477	15,893	5,418	73%	27%	435%
Livestock & Livestock Product Prices								
Camel Local Quality (Head)	4,152,097	11,005,000	10,375,000	10,555,000	3,664,831	-4%	2%	154%
Cattle Local Quality (Head)	1,170,593	4,007,500	2,460,000	2,142,500	743,824	-47%	-13%	83%
Fresh Camel Milk 1 litre	5,694	16,500	21,917	25,542	8,769	55%	17%	349%
Goat Export Quality (Head)	519,464	1,314,375	1,263,958	1,400,250	486,098	7%	11%	170%
Goat Local Quality (Head)	349,261	1,046,250	839,583	767,917	266,538	-27%	-9%	120%
Other Essential Items								
Charcoal 50kg	42,788	116,347	103,958	106,469	36,868	-8%	2%	149%
Cowpeas 1 kg	5,522	22,379	28,416	30,716	10,565	37%	8%	456%
Unskilled Labor Wage Rate	22,242	71,875	57,708	57,500	19,865	-20%	0%	159%
Firewood Bundle	2,026	3,833	4,167	4,667	-	22%	12%	130%
Local Sesame Oil 1 litre	17,829	53,583	61,000	60,792	21,008	13%	0%	241%
Exchange Rate (Somali Shilling per USD)	16,830	30,971	30,528	31,723	10,915	2%	4%	88%
Construction Materials*								
Cement 50kg	-	263,000	259,500	261,400	90,664	-1%	1%	-
Cooking Pot Aluminium 7 Litre	-	450,000	600,000	750,000	260,317	67%	25%	-
Galvanised Iron Sheet Ga 26	-	132,500	118,650	131,700	45,629	-1%	11%	-
Hollow Concrete Block 10cm x 20cm x 40cm	-	12,500	14,000	14,000	4,761	12%	0%	-
Non Collapsible Jerrycan 10 Litre	-	20,000	45,375	46,438	16,024	132%	2%	-
Plastic Tarpaulin 14m x 5 m	-	210,000	275,000	301,667	104,645	44%	10%	-
Roofing Nails 15Kg	-	740,000	646,667	631,667	219,229	-15%	-2%	-
Timber 2in x 4in x 20ft	-	260,000	57,300	58,400	20,178	-78%	2%	-
Woven Dry Raised Blanket 150cm x 200cm	-	-	75,167	79,250	27,417	-	5%	-
Terms of Trade								
Labour Wage (Daily)/ Cereal (Maize(Kg))	7	8	5	4	4	-54%	-22%	-52%
Local Goat (Head)/ Cereal (Maize(Kg))	118	114	67	48	49	-58%	-28%	-59%
Price Indices								
Consumer Price Index	-	199	259	288	-	45%	11%	-
Purchasing Power Index	-	0.50	0.39	0.35	-	-31%	-10%	-

* Data has been collected for the past 11 months only

Figure 12: Imported commodity prices compared to exchange rates

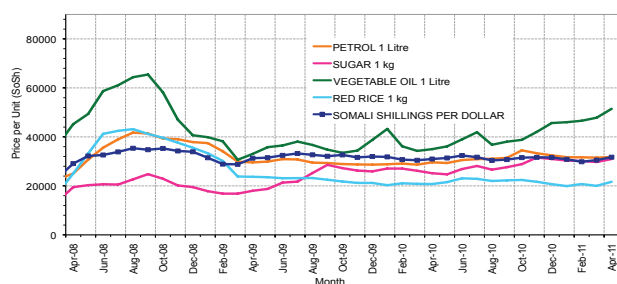
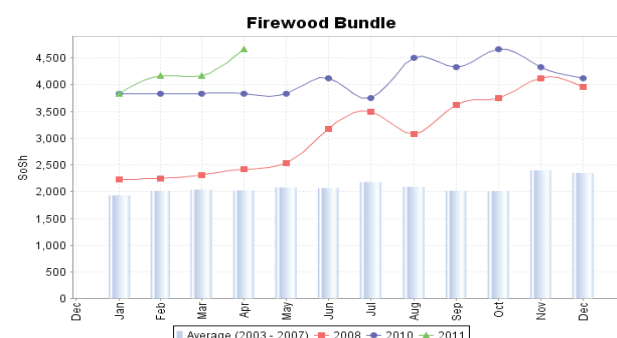
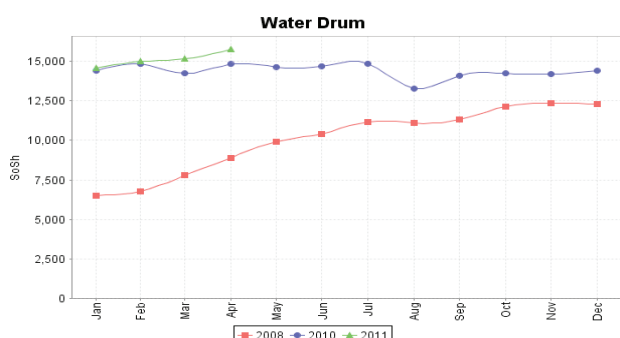
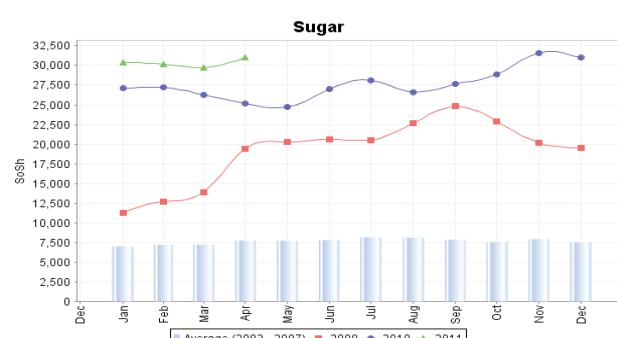
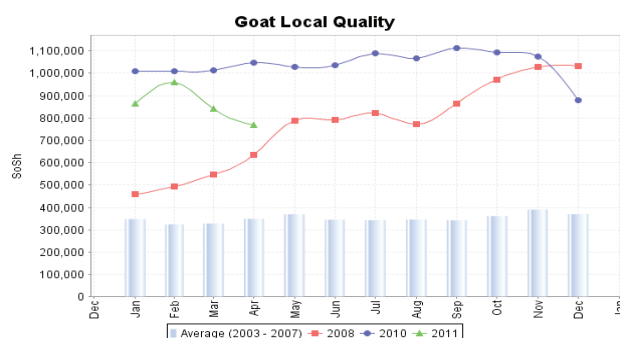
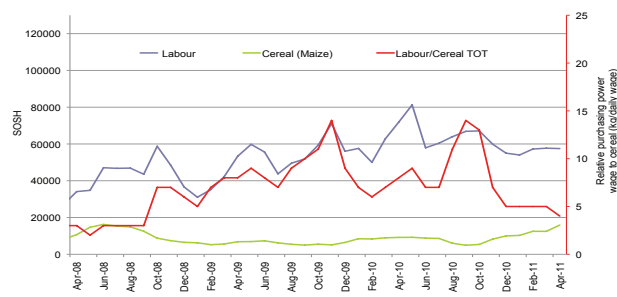


Figure 13: Trends in wage rates, staple cereal prices and relative purchasing power



Regional analysis:Banadir Region

Indicator	5-Year Average	Apr-10	Mar-11	Current Nominal Price	Current Real (Deflated) Price	% Change Same Month Previous Year	% Change Previous Month	% Change 5-year avrg (2003-07)
Imported Commodities Prices								
Diesel 1 litre	8,450	26,000	29,417	31,258	10,753	20%	6%	270%
Imported Red Rice 1kg	6,855	20,000	23,750	24,075	8,259	20%	1%	251%
Petrol 1 litre	12,660	25,000	29,333	30,592	10,522	22%	4%	142%
Sugar	7,510	24,250	29,458	28,917	9,941	19%	-2%	283%
Vegetable Oil 1 litre	13,350	35,000	48,875	49,383	17,047	41%	1%	270%
Wheat Flour 1kg	6,605	14,000	19,583	19,500	6,671	39%	0%	195%
Wheat Grain 1kg	4,055	9,000	17,000	18,000	6,150	100%	6%	344%
Cereal Prices								
Red Sorghum 1kg	2,412	7,000	15,327	19,387	6,632	177%	26%	704%
White Maize 1kg	2,991	8,000	13,658	18,428	6,299	130%	35%	516%
Livestock & Livestock Product Prices								
Camel Local Quality (Head)	5,785,000	14,000,000	16,000,000	16,500,000	5,729,067	18%	3%	185%
Cattle Local Quality (Head)	2,882,000	3,900,000	3,925,000	3,400,000	1,180,456	-13%	-13%	18%
Fresh Camel Milk 1 litre	5,040	13,000	23,967	20,800	7,122	60%	-13%	313%
Goat Export Quality (Head)	-	1,137,500	1,800,000	1,725,000	598,858	52%	-4%	-
Goat Local Quality (Head)	577,500	950,000	1,781,250	1,520,000	527,678	60%	-15%	163%
Other Essential Items								
Charcoal 50kg	100,000	140,000	139,458	148,500	51,463	6%	6%	49%
Cowpeas 1 kg	4,813	13,000	29,438	36,229	12,480	179%	23%	653%
Unskilled Labor Wage Rate	57,600	50,000	76,875	77,542	26,824	55%	1%	35%
Firewood Bundle	40,850	2,250	6,500	7,275	2,426	223%	12%	-82%
Local Sesame Oil 1 litre	17,880	65,000	66,042	67,592	23,369	4%	2%	278%
Exchange Rate (Somali Shilling per USD)	16,924	30,500	30,250	31,748	10,924	4%	5%	88%
Construction Materials*								
Cement 50kg	-	-	215,458	234,488	81,319	-	9%	-
Cooking Pot Aluminium 7 Litre	-	-	250,000	265,000	91,914	-	6%	-
Galvanised Iron Sheet Ga 26	-	-	120,800	124,179	43,018	-	3%	-
Hollow Concrete Block 10cm x 20cm x 40cm	-	-	9,813	10,796	3,649	-	10%	-
Non Collapsible Jerrycan 10 Litre	-	-	44,375	47,000	16,219	-	6%	-
Plastic Tarpaulin 14m x 5 m	-	-	222,083	241,667	83,812	-	9%	-
Roofing Nails 15Kg	-	-	482,417	601,833	208,870	-	25%	-
Timber 2in x 4in x 20ft	-	-	157,000	164,429	56,993	-	5%	-
Woven Dry Raised Blanket 150cm x 200cm	-	-	85,833	97,917	33,899	-	14%	-
Terms of Trade								
Labour Wage (Daily)/ Cereal (Maize(Kg))	19	6	6	4	4	-33%	-25%	-78%
Local Goat (Head)/ Cereal (Maize(Kg))	193	119	130	82	84	-31%	-37%	-57%
Price Indices								
Consumer Price Index	-	199	259	288	-	45%	11%	-
Purchasing Power Index	-	0.50	0.39	0.35	-	-31%	-10%	-

* Data has been collected for the past 11 months only

Figure 14: Bakara: Imported Commodity Prices compared to Exchange Rate

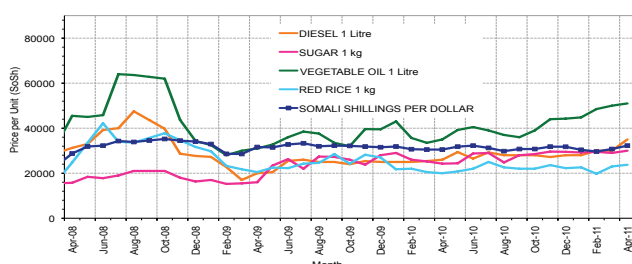
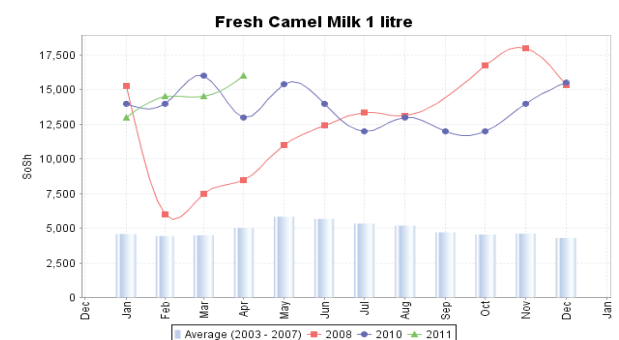
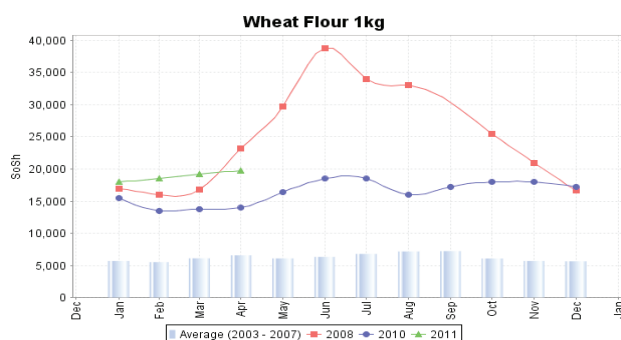
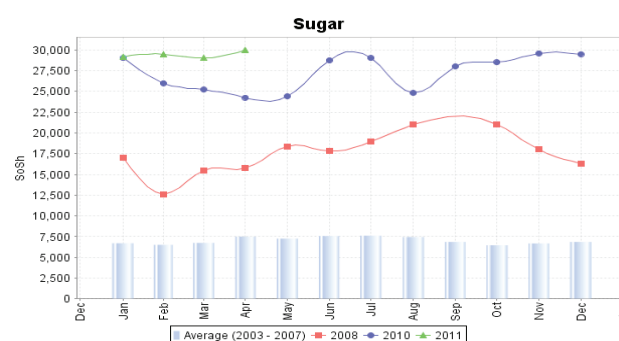
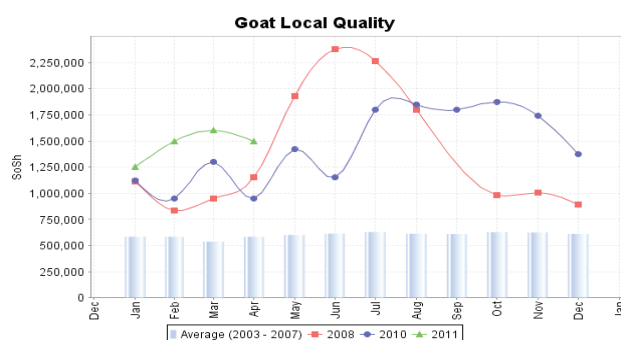
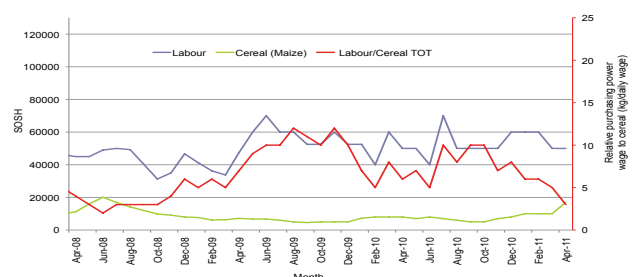


Figure 15: Bakara: Trends in Wage Rates, Staple Cereal Prices and Relative Purchasing Power



Regional analysis: Central Regions

Indicator	5-Year Average	Apr-10	Mar-11	Current Nominal Price	Current Real (Deflated) Price	% Change Same Month Previous Year	% Change Previous Month	% Change 5-year avrg (2003-07)
Imported Commodities Prices								
Diesel 1 litre	10,996	29,520	36,050	36,960	12,868	25%	3%	236%
Imported Red Rice 1kg	7,740	24,000	29,950	29,500	10,251	23%	-2%	281%
Petrol 1 litre	13,097	27,560	31,250	31,650	11,005	15%	1%	142%
Sugar	9,136	31,640	35,900	35,800	12,461	13%	0%	292%
Vegetable Oil 1 litre	18,605	53,640	58,150	61,770	21,574	15%	6%	232%
Wheat Flour 1kg	7,896	20,000	23,300	24,100	8,356	21%	3%	205%
Wheat Grain 1kg	5,208	15,733	18,333	22,333	7,736	42%	22%	329%
Cereal Prices								
Red Sorghum 1kg	4,223	11,360	17,250	19,300	6,672	70%	12%	357%
White Maize 1kg	4,741	12,880	17,250	19,500	6,742	51%	13%	311%
Livestock & Livestock Product Prices								
Camel Local Quality (Head)	2,195,202	7,750,000	7,825,000	7,960,000	2,792,882	3%	2%	263%
Cattle Local Quality (Head)	1,525,972	2,350,000	-	-	-	-	-	-
Fresh Camel Milk 1 litre	12,070	46,120	43,200	48,240	16,826	5%	12%	300%
Goat Export Quality (Head)	369,800	1,342,000	1,487,500	1,575,000	552,532	17%	6%	326%
Goat Local Quality (Head)	284,309	1,026,400	1,047,000	1,150,300	403,514	12%	10%	305%
Other Essential Items								
Charcoal 50kg	55,659	213,200	213,000	214,000	74,988	0%	0%	284%
Cowpeas 1 kg	6,980	22,800	36,800	39,200	13,654	72%	7%	462%
Unskilled Labor Wage Rate	31,733	91,200	82,000	81,000	28,321	-11%	-1%	155%
Firewood Bundle	3,933	25,010	33,000	33,900	11,795	36%	3%	762%
Local Sesame Oil 1 litre	28,041	100,000	94,750	94,600	33,093	-5%	0%	237%
Exchange Rate (Somali Shilling per USD)	16,948	31,432	30,620	31,135	10,825	-1%	2%	84%
Construction Materials*								
Cement 50kg	-	337,200	324,600	327,600	114,847	-3%	1%	-
Cooking Pot Aluminium 7 Litre	-	320,000	414,500	404,800	141,935	27%	-2%	-
Galvanised Iron Sheet Ga 26	-	166,000	155,525	155,775	54,558	-6%	0%	-
Hollow Concrete Block 10cm x 20cm x 40cm	-	19,250	16,250	16,250	5,602	-16%	0%	-
Non Collapsible Jerrycan 10 Litre	-	35,000	51,000	51,600	18,005	47%	1%	-
Plastic Tarpaulin 14m x 5 m	-	342,000	306,000	310,000	108,672	-9%	1%	-
Roofing Nails 15Kg	-	837,600	819,440	811,940	284,791	-3%	-1%	-
Timber 2in x 4in x 20ft	-	184,000	151,600	151,600	53,093	-18%	0%	-
Woven Dry Raised Blanket 150cm x 200cm	-	139,200	134,000	134,000	46,918	-4%	0%	-
Terms of Trade								
Labour Wage (Daily)/ Cereal (Rice(Kg))	4	4	3	3	3	-28%	0%	-33%
Local Goat (Head)/ Cereal (Rice(Kg))	37	43	35	39	39	-9%	12%	6%
Camel (Head)/ Cereal (Kg)	284	323	261	270	272	-16%	3%	-5%
Price Indices								
Consumer Price Index	-	230	271	285	-	24%	5%	-
Purchasing Power Index	-	0.43	0.37	0.35	-	-19%	-5%	-

* Data has been collected for the past 11 months only

Figure 16: Imported commodity prices compared to exchange rates

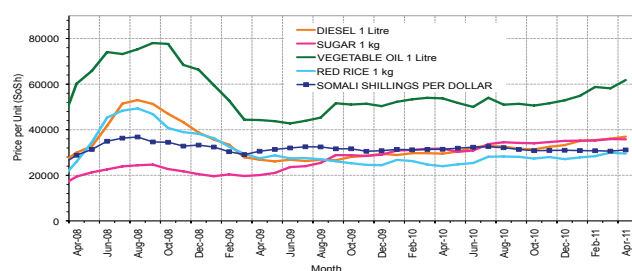
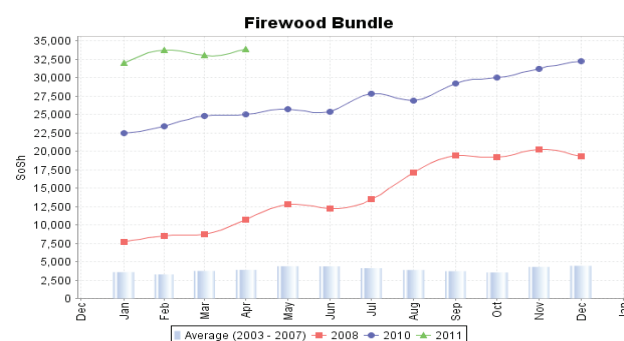
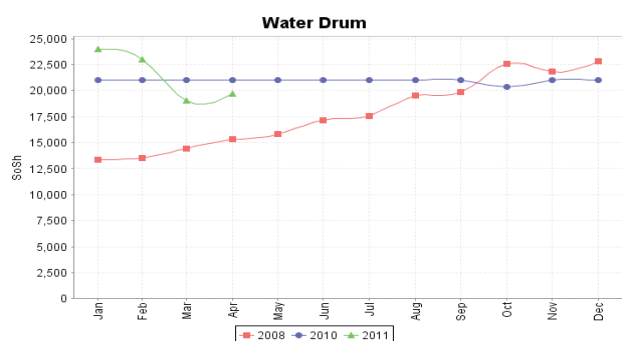
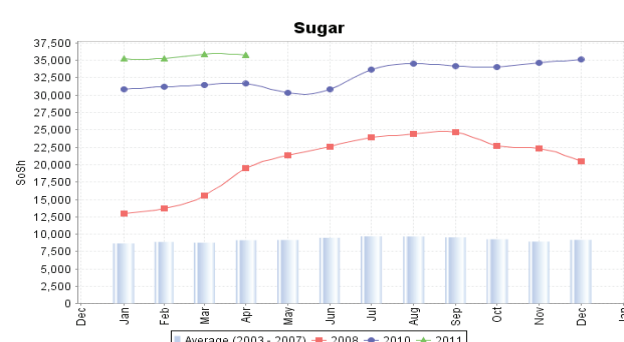
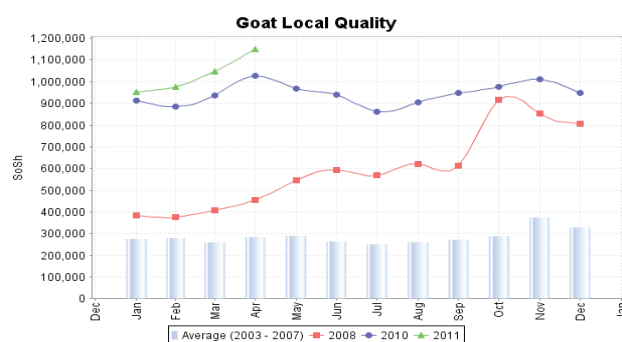
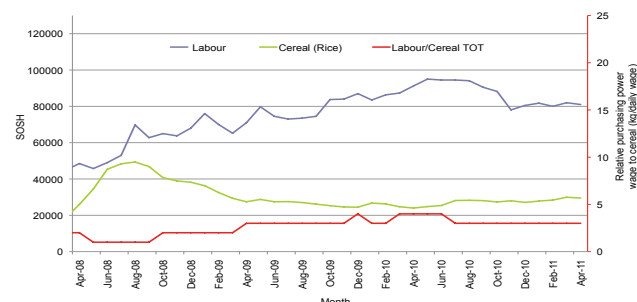


Figure 17: Trends in wage rates, staple cereal prices and relative purchasing power



Regional analysis: Northeast Regions

Indicator	5-Year Average	Apr-10	Mar-11	Current Nominal Price	Current Real (Deflated) Price	% Change Same Month Previous Year	% Change Previous Month	% Change 5-year avg (2003-07)
Imported Commodities Prices								
Diesel 1 litre	8,950	27,288	32,438	32,070	11,866	18%	-1%	258%
Imported Red Rice 1kg	6,376	21,288	22,813	23,400	8,631	10%	3%	267%
Petrol 1 litre	9,886	23,563	29,063	29,975	11,085	27%	3%	203%
Sugar	8,608	26,200	31,875	32,313	11,957	23%	1%	275%
Vegetable Oil 1 litre	17,627	41,988	50,188	51,500	19,116	23%	3%	192%
Wheat Flour 1kg	6,764	17,375	20,625	22,225	8,193	28%	8%	229%
Wheat Grain 1kg	7,337	27,725	29,625	30,250	11,187	9%	2%	312%
Cereal Prices								
Red Sorghum 1kg	6,750	19,263	21,250	28,000	10,348	45%	32%	315%
White Maize 1kg	5,220	17,758	21,750	21,600	7,960	22%	-1%	314%
Livestock & Livestock Product Prices								
Camel Local Quality (Head)	3,172,291	10,901,668	13,837,500	13,433,750	5,012,493	23%	-3%	323%
Cattle Local Quality (Head)	1,901,875	5,700,000	7,000,000	6,075,000	2,266,691	7%	-13%	219%
Fresh Camel Milk 1 litre	14,017	45,421	54,500	54,788	20,343	21%	1%	291%
Goat Export Quality (Head)	418,209	1,297,000	1,375,000	1,600,000	596,915	23%	16%	283%
Goat Local Quality (Head)	385,375	1,145,125	1,245,000	1,414,625	527,745	24%	14%	267%
Other Essential Items								
Charcoal 50kg	70,621	267,125	348,750	320,688	119,560	20%	-8%	354%
Cowpeas 1 kg	9,572	30,100	42,333	45,650	16,934	52%	8%	377%
Unskilled Labor Wage Rate	44,750	107,250	112,500	111,500	41,504	4%	-1%	149%
Firewood Bundle	7,233	32,500	31,125	31,613	11,696	-3%	2%	337%
Local Sesame Oil 1 litre	28,551	91,583	88,333	89,438	33,272	-2%	1%	213%
Exchange Rate (Somali Shilling per USD)	17,051	32,438	31,438	31,638	11,705	-2%	1%	86%
Construction Materials*								
Cement 50kg	-	247,813	228,813	235,250	87,680	-5%	3%	-
Cooking Pot Aluminium 7 Litre	-	342,500	459,375	489,375	182,503	43%	7%	-
Galvanised Iron Sheet Ga 26	-	241,750	199,438	235,125	87,633	-3%	18%	-
Hollow Concrete Block 10cm x 20cm x 40cm	-	11,667	12,313	12,250	4,471	5%	-1%	-
Non Collapsible Jerrycan 10 Litre	-	35,250	40,000	35,200	13,034	0%	-12%	-
Plastic Tarpaulin 14m x 5 m	-	200,000	208,438	204,688	76,276	2%	-2%	-
Roofing Nails 15Kg	-	394,688	688,688	693,125	258,529	76%	1%	-
Timber 2in x 4in x 20ft	-	322,875	221,469	231,225	86,178	-28%	4%	-
Woven Dry Raised Blanket 150cm x 200cm	-	259,500	259,375	262,875	97,988	1%	1%	-
Terms of Trade								
Labour Wage (Daily)/ Cereal (Rice(Kg))	7	5	5	5	5	-5%	-3%	-32%
Local Goat (Head)/ Cereal (Rice(Kg))	60	54	55	60	61	12%	11%	0%
Price Indices								
Consumer Price Index	-	223	261	268	-	20%	3%	-
Purchasing Power Index	-	0.45	0.38	0.37	-	-17%	-3%	-

* Data has been collected for the past 11 months only

Figure 18: Imported commodity prices compared to exchange rates

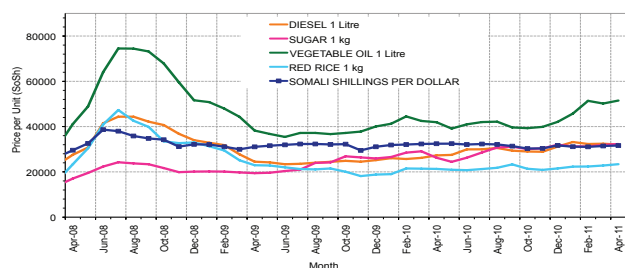
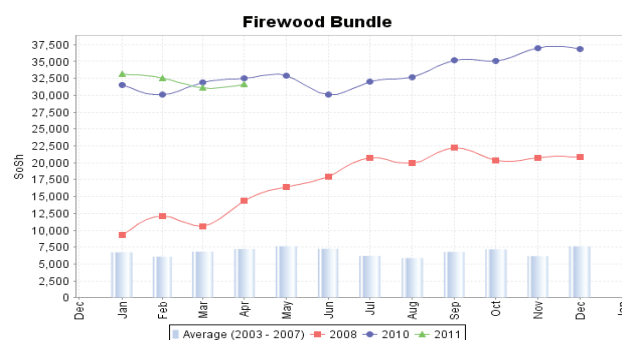
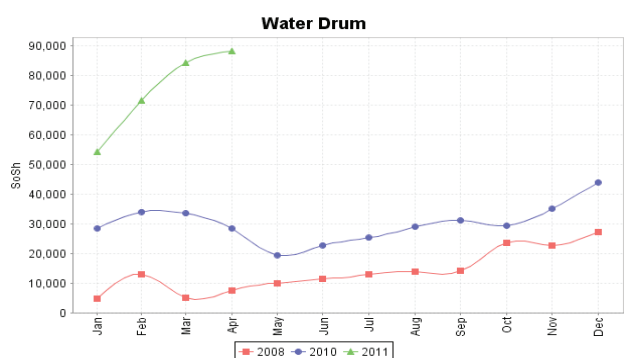
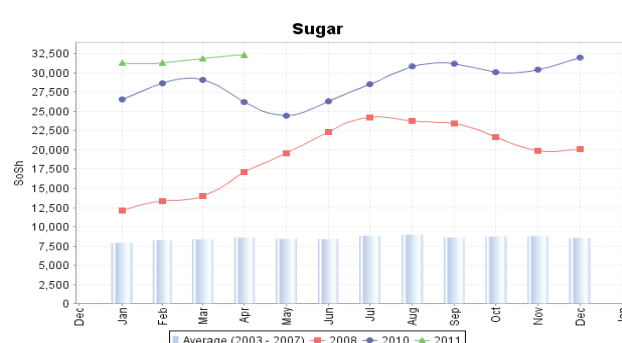
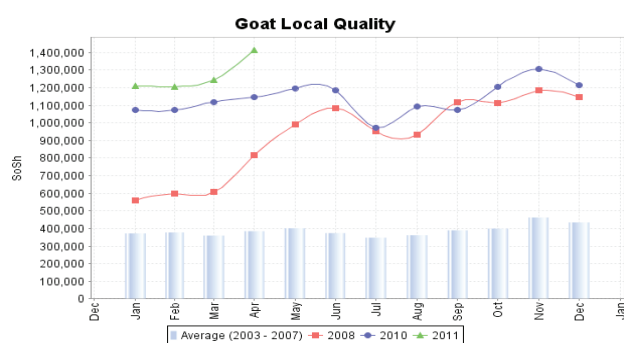
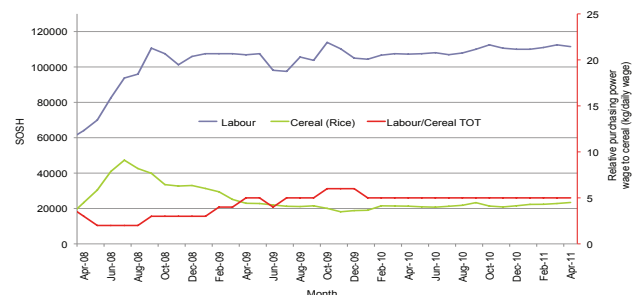


Figure 19: Trends in wage rates, staple cereal prices and relative purchasing power



Regional analysis: Northwest Regions

Indicator	5-Year Average	Apr-10	Mar-11	Current Nominal Price	Current Real (Deflated) Price	% Change Same Month Previous Year	% Change Previous Month	% Change 5-year avg (2003-07)
Imported Commodities Prices								
Diesel 1 litre	3,518	4,975	5,275	5,438	4,671	9%	3%	55%
Imported Red Rice 1kg	3,002	5,050	4,931	5,300	4,550	5%	7%	77%
Petrol 1 litre	4,386	5,818	5,256	5,563	4,781	-4%	6%	27%
Sugar	3,260	5,575	5,775	5,888	5,066	6%	2%	81%
Vegetable Oil 1 litre	7,121	10,125	9,244	9,338	8,093	-8%	1%	31%
Wheat Flour 1kg	2,789	3,775	4,100	3,963	3,377	5%	-3%	42%
Wheat Grain 1kg	1,948	2,483	2,667	3,300	2,795	33%	24%	69%
Cereal Prices								
White Sorghum 1kg	1,757	2,587	2,458	3,081	2,603	19%	25%	75%
Yellow Maize 1kg	2,694	2,956	2,425	2,716	2,283	-8%	12%	1%
Livestock & Livestock Product Prices								
Camel Local Quality (Head)	1,451,883	1,450,000	1,093,333	1,272,500	1,116,333	-12%	16%	-12%
Cattle Local Quality (Head)	791,983	1,295,000	1,269,167	1,257,917	1,103,538	-3%	-1%	59%
Fresh Camel Milk 1 litre	4,934	4,385	5,594	4,950	4,243	13%	-12%	0%
Goat Export Quality (Head)	167,040	320,625	274,250	335,500	294,252	5%	22%	101%
Goat Local Quality (Head)	146,232	240,625	223,000	242,156	212,356	1%	9%	66%
Other Essential Items								
Charcoal 50kg	20,147	31,688	30,188	30,906	27,015	-2%	2%	53%
Cowpeas 1 kg	4,860	9,792	7,250	7,750	6,699	-21%	7%	59%
Unskilled Labor Wage Rate	29,027	32,500	29,250	30,313	26,495	-7%	4%	4%
Firewood Bundle	5,668	1,713	2,133	2,475	2,071	44%	16%	-56%
Local Sesame Oil 1 litre	18,108	25,208	25,083	21,125	18,434	-16%	-16%	17%
Exchange Rate (Somaliland Shilling per USD)	6,764	6,925	5,181	6,031	-	-13%	16%	-11%
Construction Materials*								
Cement 50kg	-	52,313	43,950	44,625	39,052	-15%	2%	-
Cooking Pot Aluminium 7 Litre	-	62,000	94,000	87,625	76,778	41%	-7%	-
Galvanised Iron Sheet Ga 26	-	-	48,000	48,000	42,013	-	0%	-
Hollow Concrete Block 10cm x 20cm x 40cm	-	3,000	3,225	3,725	3,168	24%	16%	-
Non Collapsible Jerrycan 10 Litre	-	5,333	6,775	6,775	5,844	27%	0%	-
Plastic Tarpaulin 14m x 5 m	-	51,500	68,000	68,750	60,218	33%	1%	-
Roofing Nails 15Kg	-	130,083	147,750	165,063	144,719	27%	12%	-
Timber 2in x 4in x 20ft	-	126,693	124,000	122,667	107,522	-3%	-1%	-
Woven Dry Raised Blanket 150cm x 200cm	-	47,000	60,375	59,938	52,487	28%	-1%	-
Terms of Trade								
Labour Wage (Daily)/ Cereal (Rice(Kg))	10	6	6	6	6	-11%	-4%	-41%
Local Goat (Head)/ Cereal (Rice(Kg))	49	48	45	46	47	-4%	1%	-6%
Price Indices								
Consumer Price Index	-	113	114	114	-	0%	0%	-
Purchasing Power Index	-	0.88	0.88	0.88	-	0%	0%	-

* Data has been collected for the past 11 months only

Figure 20: Imported commodity prices compared to exchange rates

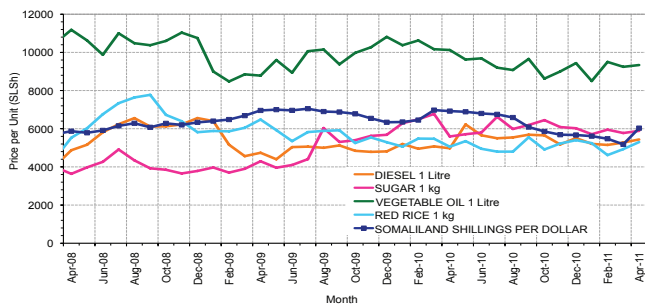
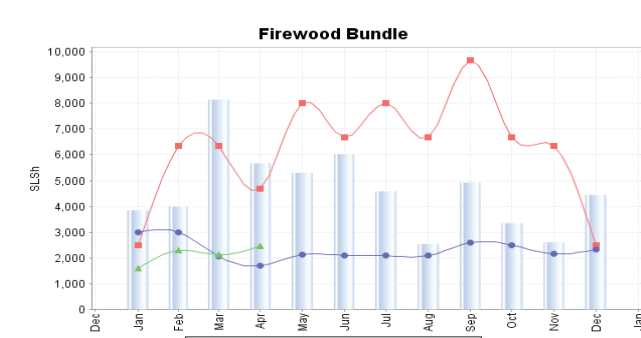
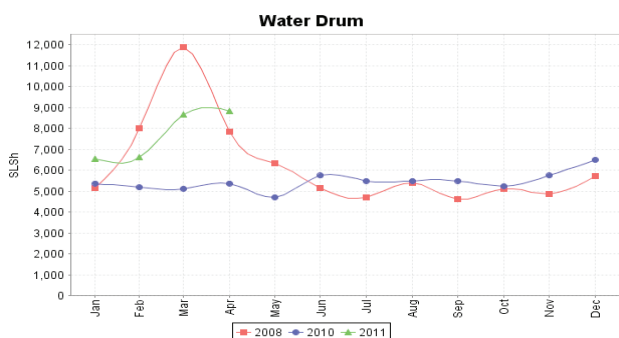
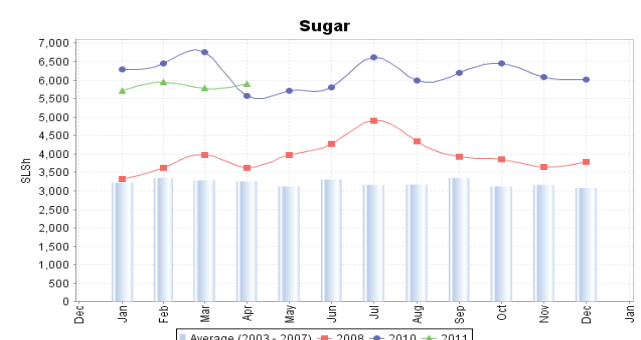
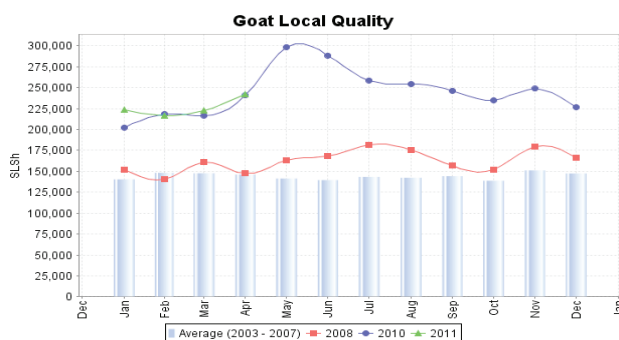
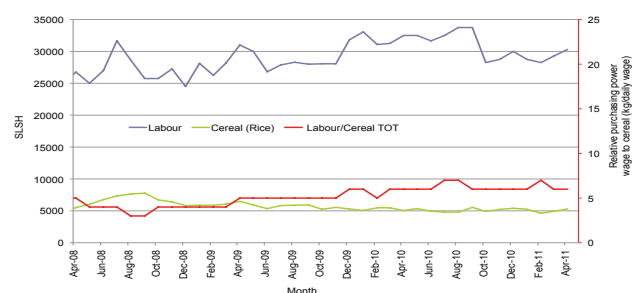


Figure 21: Trends in wage rates, staple cereal prices and relative purchasing power



Trends in Livestock Exports

Table 1: Berbera Livestock Exports (Number of Heads)

	1994	1995	1996	1997	1998	1999	2000	2001	2002	2003	2004	2005	2006	2007	2008	2009	2010	2011
Shoats	1,572,656	2,683,597	2,376,646	2,814,495	957,224	2,048,136	1,601,083	51,546	341,711	563,107	859,404	1,023,795	1,017,242	1,350,054	1,219,519	1,556,003	2,584,810	391,800
Cattle	173,400	167,128	65,127	66,939	92,213	89,967	63,263	20,973	37,547	84,312	131,852	148,151	85,631	88,143	80,051	88,005	133,021	38,886
Camel	38,553	21,993	42,801	50,587	11,663	37,430	16,984	3,473	18,864	21,874	5,147	5,069	22,810	14,245	26,515	20,206	92,651	37,748

Figure 22: Berbera Livestock Exports (Number of Heads)

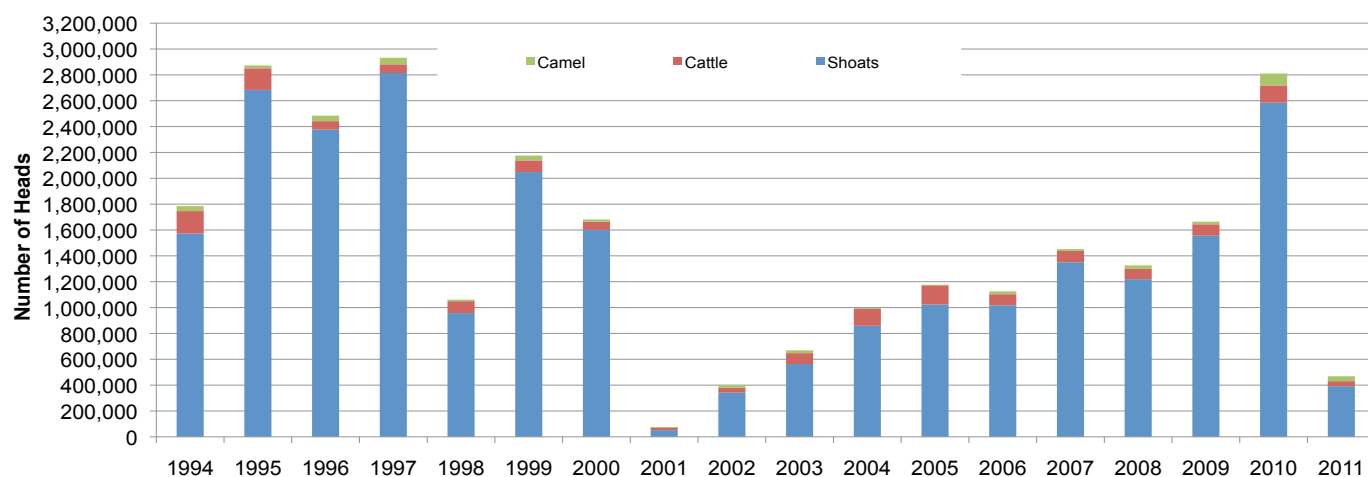


Table 2: Bossaso Livestock Exports (Number of Heads)

	1994	1995	1996	1997	1998	1999	2000	2001	2002	2003	2004	2005	2006	2007	2008	2009	2010	2011
Shoats	344,000	524,346	614,407	494,320	517,020	633,669	571,455	548,853	1,412,450	1,483,409	1,166,480	1,594,859	1,777,283	1,522,855	1,236,775	1,159,454	1,334,478	237,801
Cattle	1,450	8,795	15,335	17,831	29,492	36,586	27,604	42,248	53,313	71,328	79,994	91,910	104,595	89,190	78,046	67,385	103,808	32,086
Camel	5,397	8,392	20,462	14,599	3,938	15,544	8,177	1,950	9,720	4,259	2,488	26,109	33,724	27,580	27,639	15,331	36,865	24,440

Figure 23: Bossaso Livestock Exports (Number of Heads)

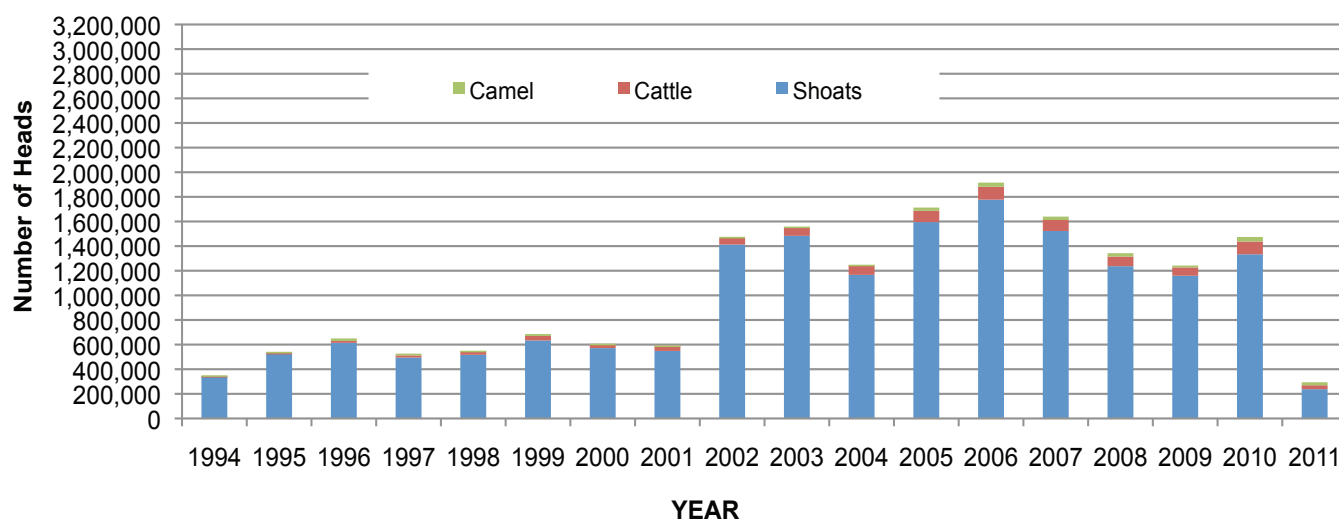


Table 3: Total Cereal Imports (Berbera,Bossasso,Elmaan)

	1997	1998	1999	2000	2001	2002	2003	2004	2005	2006	2007	2008	2009	2010	2011
Rice	66,419	43,410	63,464	75,687	74,729	144,600	180,614	146,567	150,017	198,101	166,626	136,007	171,472	161,415	72,790
Wheat flour	35,143	26,774	55,176	78,555	134,425	128,263	171,442	151,555	169,583	178,345	176,821	169,208	240,247	249,080	77,128
Pasta	2,510	6,858	8,544	11,071	26,702	35,425	29,273	38,749	39,153	52,815	41,331	38,441	86,372	102,373	45,801

Figure 24: Total Cereal Imports (Berbera,Bossaso and Elmaan)

