



Post Gu 2012

Presentation

22nd August 2012

Juba Regions

Technical
Partner

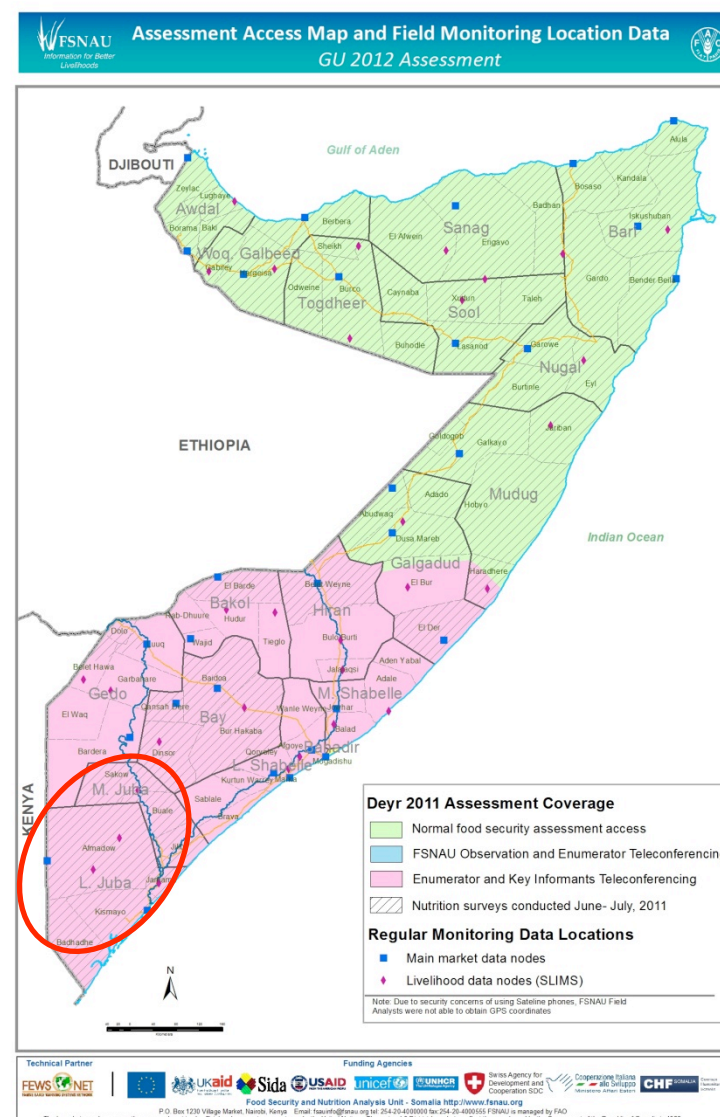


Donors

Gu 2012 Seasonal Assessment Coverage

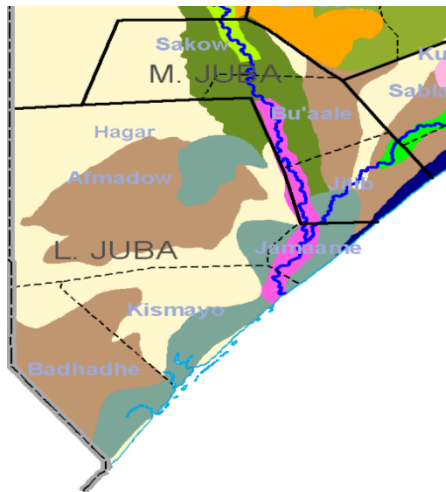
Field Access and Field Data Locations

Due to general insecurity FSNAU field analyst of Juba region did not have direct field access for data collection; instead field analyst collected data through enumerators and key informants via teleconferencing



Main Livelihood Groups

Sources of Food and Income



Livelihood Groups & Main Sources of Food and Income

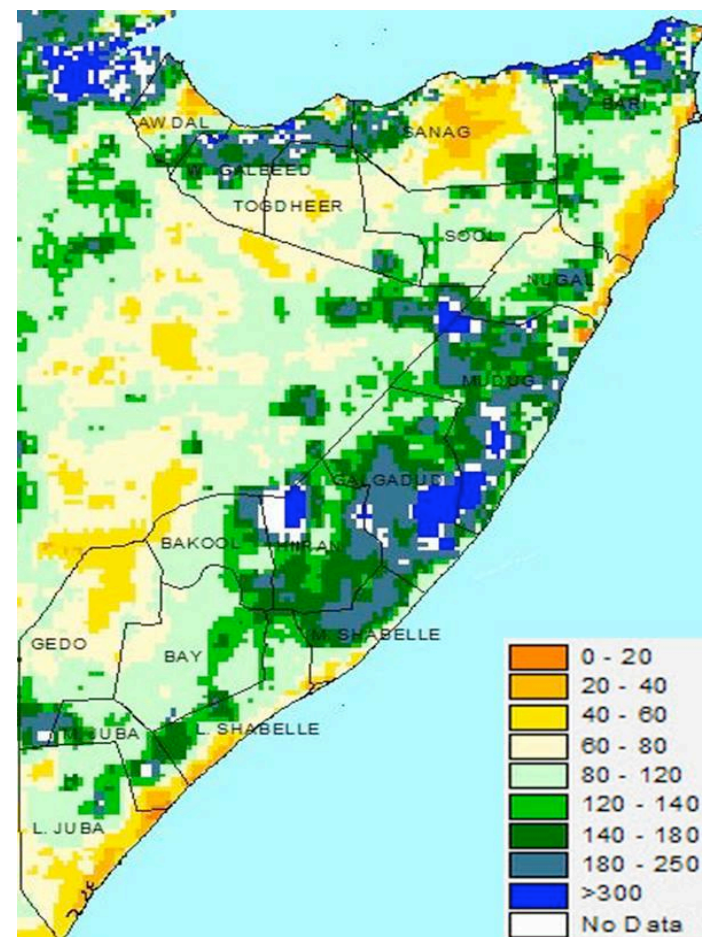
- **2 Pastoral Livelihoods (Southeast and Southern Inland Pastoralists)**
 - ☐ Primary sources of income of poor: sale of livestock & livestock products
 - ☐ Primary sources of food of poor: purchase
 - ☐ Primary livelihood asset of poor: camel, cattle, sheep/goat
- **2 Agro-pastoral Livelihoods (Southern and Lower Juba Agropastoralists)**
 - ☐ Southern Agropastoral are more Agro pastoral Afmadow, L. Juba, than those in the M. Juba and Jammame (L.Juba) who are more agriculturalist – main sources of income: sale of livestock & livestock products, self-employment, employment, crop sales; main source of food is own production and purchases
 - ☐ Lower Juba Agropastoral are more pastoral – main source of income: sales of livestock products and wild foods; main source of food: own production and purchases.
 - ☐ Riverine (M. and L. Juba)
 - Main source of income of poor : Crop sales, wage labour, self-employment (collection of bush products)
 - Main sources of food of poor: Own production and market purchase

Overall Statement:

Overall *Gu* seasonal rainfall performance was below average in terms of total amounts, frequency, and coverage in most livelihoods with the exception of **Buale** district where the rains were near normal.

The season was characterized by poor localized rains, less frequent and long dry spells

Gu 2012 RFE Percent from Normal Long-Term Mean (April-June 2012)

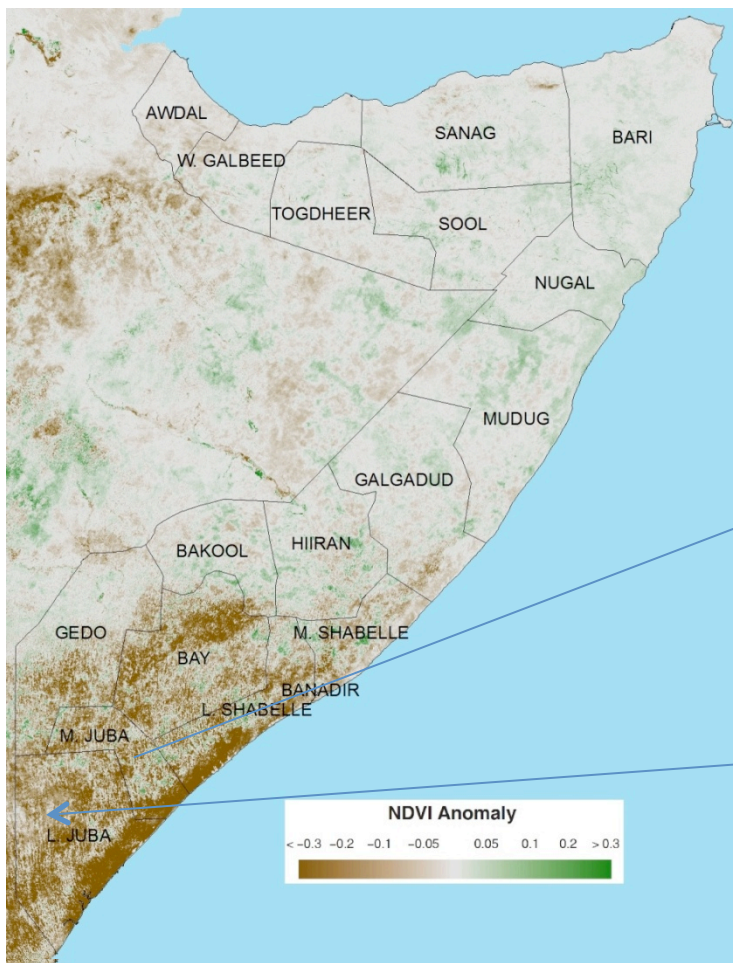


Source: NOAA/CPC/FEWS NET

CLIMATE

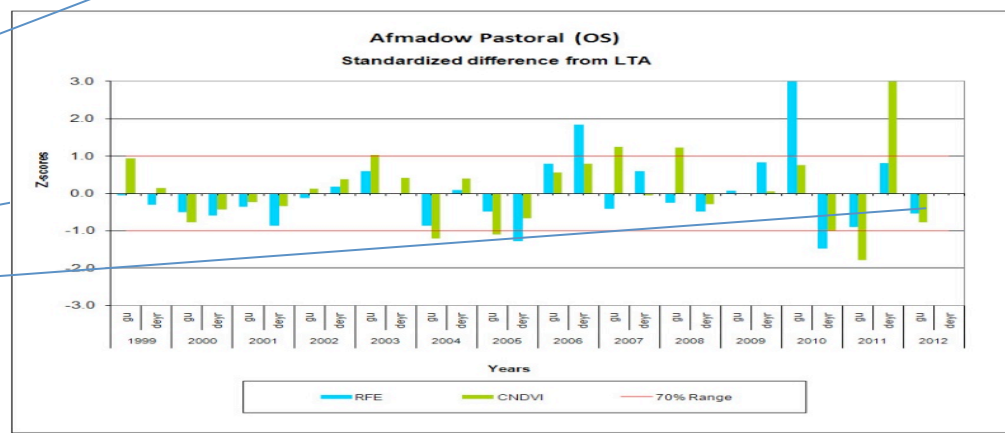
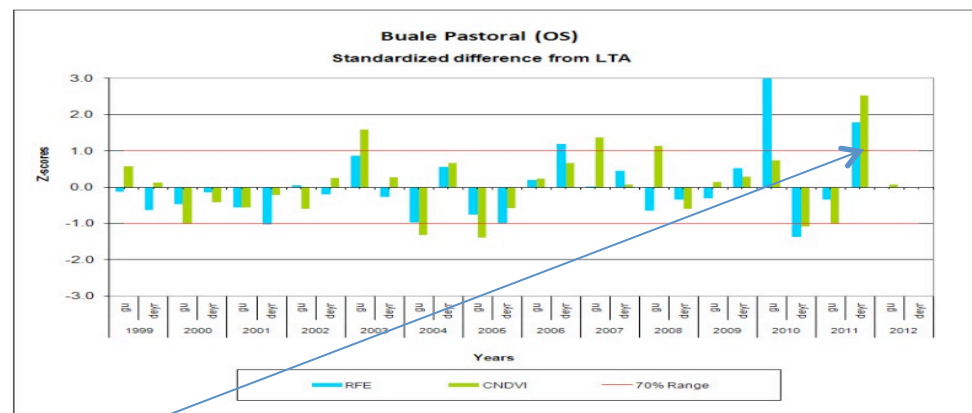
Vegetation Conditions

NDVI eMODIS Anomaly Period 36, June 21-30, 2012



Source: NOAA/CPC/FEWS NET

Trends in NDVI & RFE by District & Land Cover

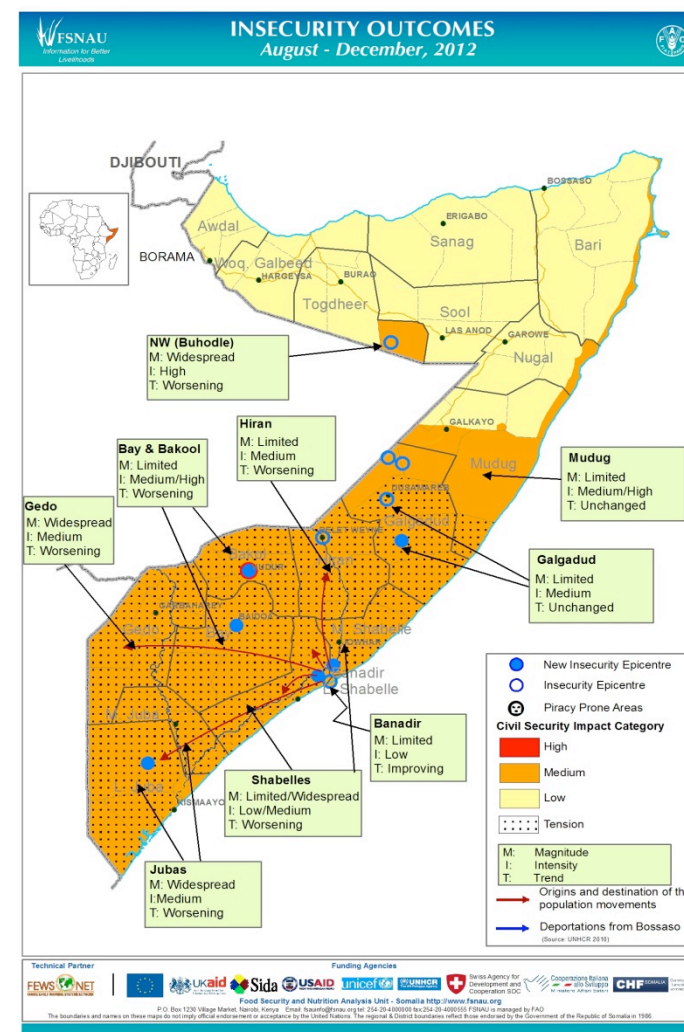


Civil Security Situation:

The overall security situation in the Juba region remained tense and highly volatile with extensive military activities.

Direct and Indirect Impacts on Food Security & Nutrition:

- Human life losses
- Renewed evictions of humanitarian organizations
- Market and trade disruptions



AGRICULTURE

Regional Cereal Production – Lower Juba

Juba Hoose (Lower) Cereal Production Estimates						
Districts	Gu 2012 Production in MT		Total Cereal	Gu 2012 as % of Gu 2011	Gu 2012 as % of Gu PWA (1995-2011)	Gu 2012 as % of 5 year average (2007-2011)
	Maize	Sorghum				
Afmadow	12	2	14	68%	4%	7%
Hagar	240	0	240	2286%	80%	122%
Badhaadhe	0	0	0	0%	0%	0%
Jamaame	300	0	300	122%	9%	18%
Kismaayo	0	0	0	0%	0%	0%
Juba Hoose (Lower) GU 2012 Total	552	2	554	173%	11%	20%

AGRICULTURE

Regional Cereal Production – Lower Juba

Juba Hoose (Lower) Cereal Production Estimates plus Off-Season						
Districts	Gu 2012 Production in MT		Total Cereal	Gu 2012 as % of Gu 2011	Gu 2012 as % of Gu PWA (1995-2011)	Gu 2012 as % of 5 year average (2007-2011)
	Maize	Sorghum				
Afmadow	37	2	39	189%	11%	18%
Hagar	240	0	240	2286%	80%	121%
Badhaadhe	0	0	0	0%	0%	0%
Jamaame	1,500	0	1,500	435%	37%	34%
Kismaayo	50	0	50	111%	6%	9%
Juba Hoose (Lower) GU 2012 Total	1,827	2	1,829	434%	31%	32%

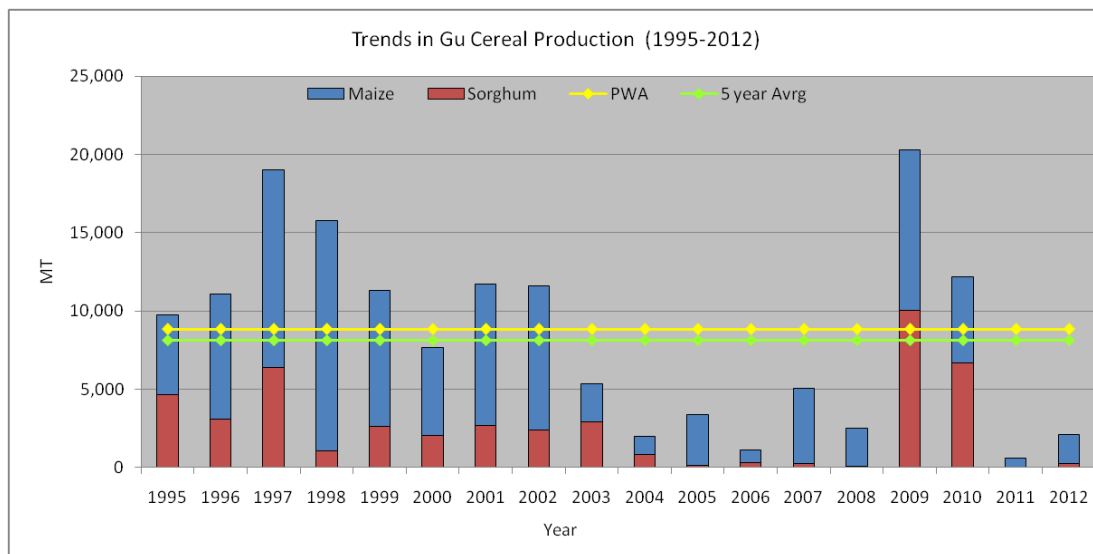
Regional Cereal Production – Middle Juba

Juba Dhexe (Middle) Cereal Production Estimates						
Districts	Gu 2012 Production in MT		Total Cereal	Gu 2012 as % of Gu 2011	Gu 2012 as % of Gu PWA (1995-2011)	Gu 2012 as % of 5 year average (2007-2011)
	Maize	Sorghum				
Bu'aale	320	160	480	250%	27%	35%
Jilib	340	0	340	194%	9%	12%
Saakow	1,200	80	1,280	640%	39%	33%
Juba Dhexe (Middle) Gu 2012 Total	1,860	240	2,100	370%	24%	26%

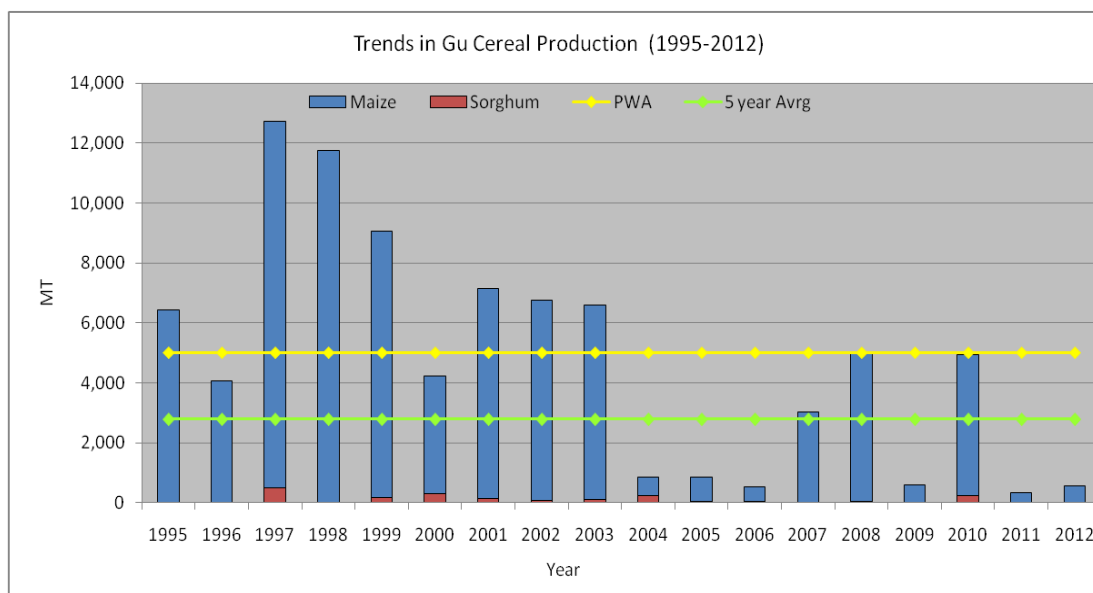
Juba Dhexe (Middle) Off-Season Cereal Production Estimates plus Off-Season

Districts	Gu 2012 Production in MT		Total Cereal	Gu 2012 as % of Gu 2011	Gu 2012 as % of Gu PWA (1995-2011)	Gu 2012 as % of 5 year AVG (2007-2011)
	Maize	Sorghum				
Bu'aale	520	160	680	154%	34%	36%
Jilib	740	0	740	118%	18%	20%
Saakow	1,440	80	1,520	203%	43%	34%
Juba Dhexe (Middle) Gu 2012 Total	2,700	240	2,940	162%	31%	29%

Cereal Production Trends in M. Juba and L. Juba

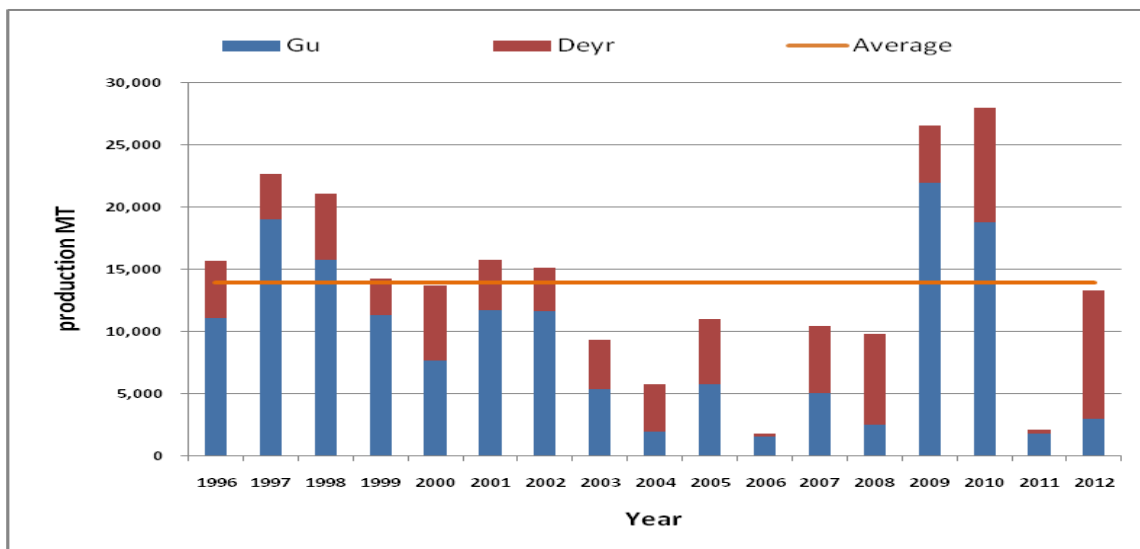


**Middle Juba *Gu*'12 Cereal
Production Trends (1995 –
2012)**

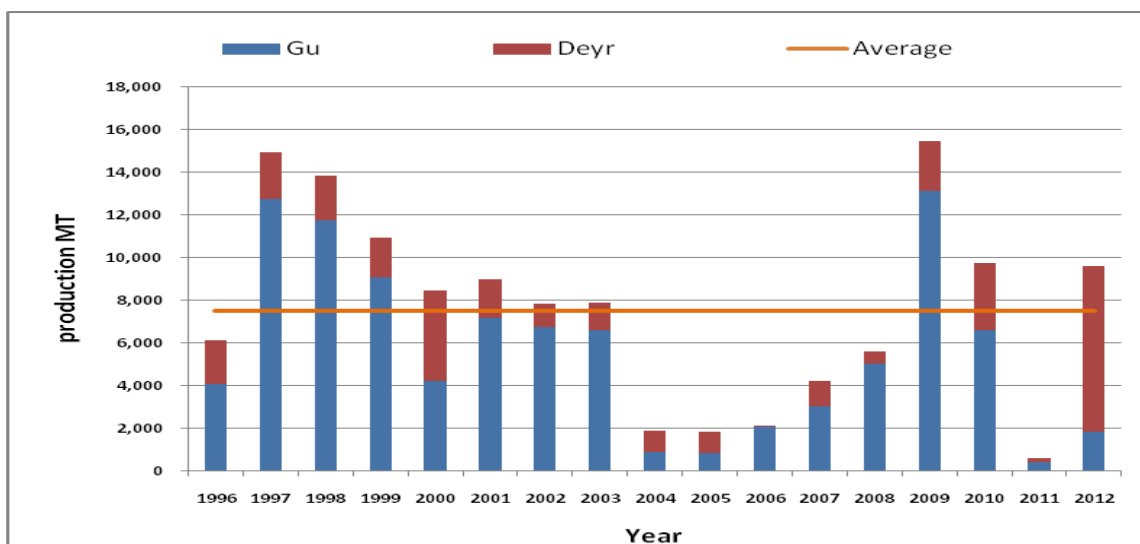


**Lower Juba *Gu* '12 Cereal
Production Trends (1995 –
2012)**

Annual Cereal Production Trends in M. Juba and L. Juba



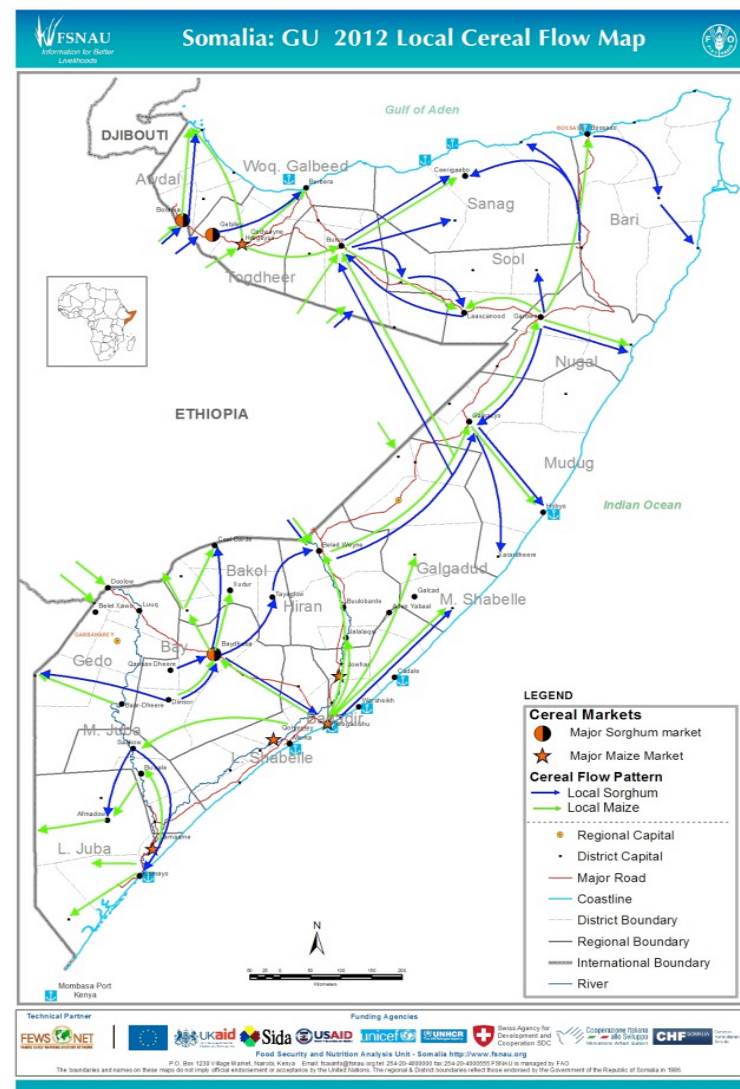
**Middle Juba Annual
Cereal Production
Trends
(1996 – 2012)**



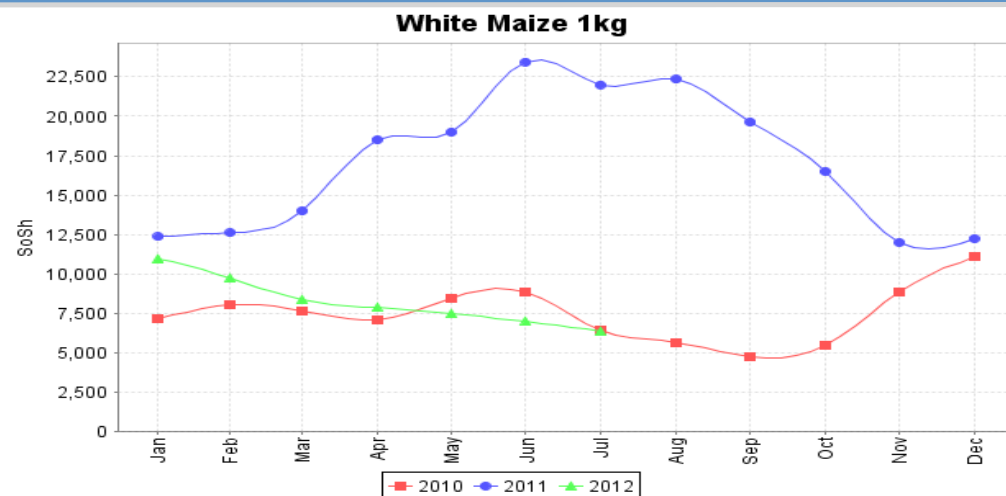
**Lower Juba Annual
Cereal Production Trends
(1996 – 2012)**

Gu 2012 Local Cereal Flow Map

- Cereal flow across Juba regions
- Inflow of maize from Lower Shabelle



Regional Trends in Cereal Prices in Juba Regions



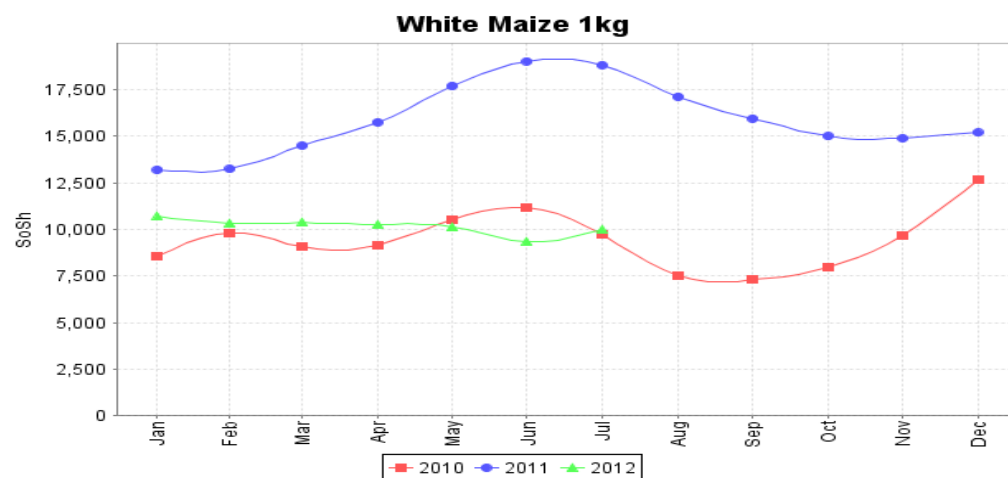
Middle Juba

Regional Trend in Cereal Prices

Jun'11-Jun'12: Decrease (70%)

Jan-Jun'12: Decrease (36%)

Jun-Jul '12: Decrease (9%)



Lower Juba

Regional Trend in Cereal Prices

Jun'11-Jun'12: Decrease (51%)

Jan-Jun'12 : Decrease (13%)

Jun-Jul '12 : Increase (7%)

Source: FSNAU FIDS June 2012 R=1.

AGRICULTURE

Gu 2012 Assessment Photos



**Poor Maize Crop. Heleshid, Jilib, Middle Juba,
FSNAU, July 2012**

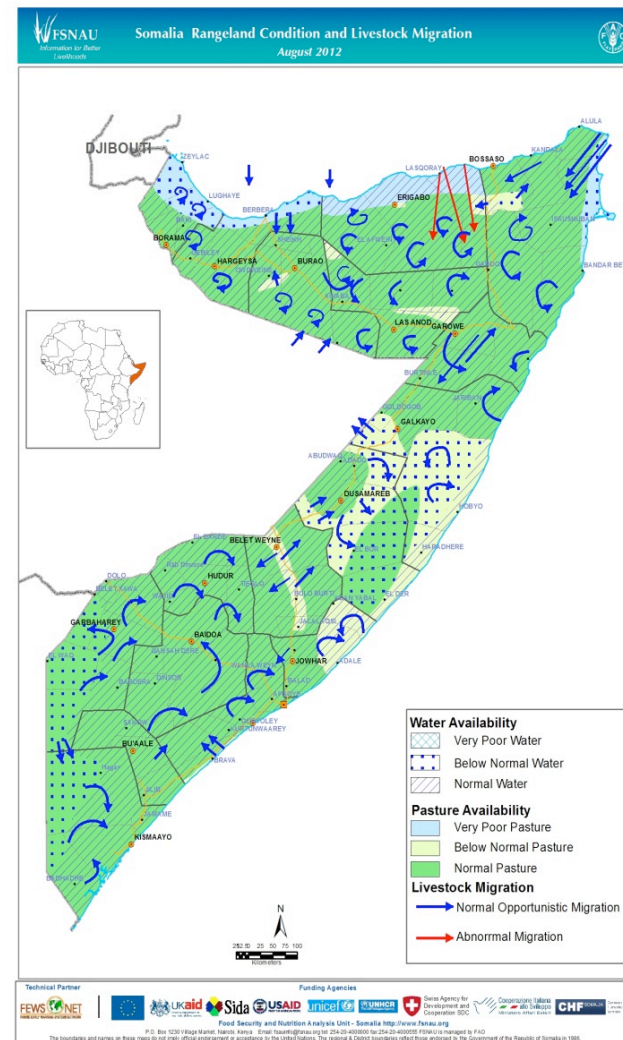


**Poor Maize Crop. Ahmed Yare, Jilib, Middle Juba,
FSNAU, July 2012**

LIVESTOCK

Rangeland Conditions and Livestock Migration (June 2012)

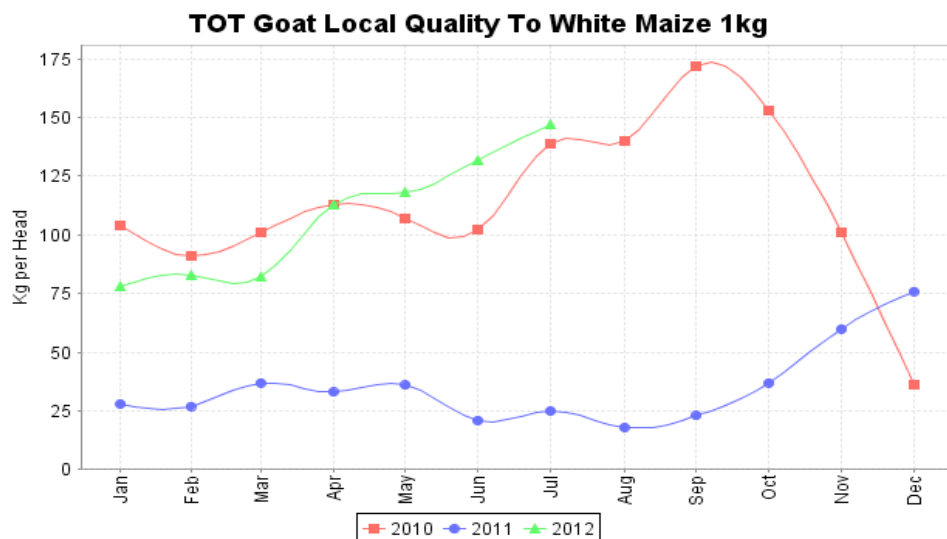
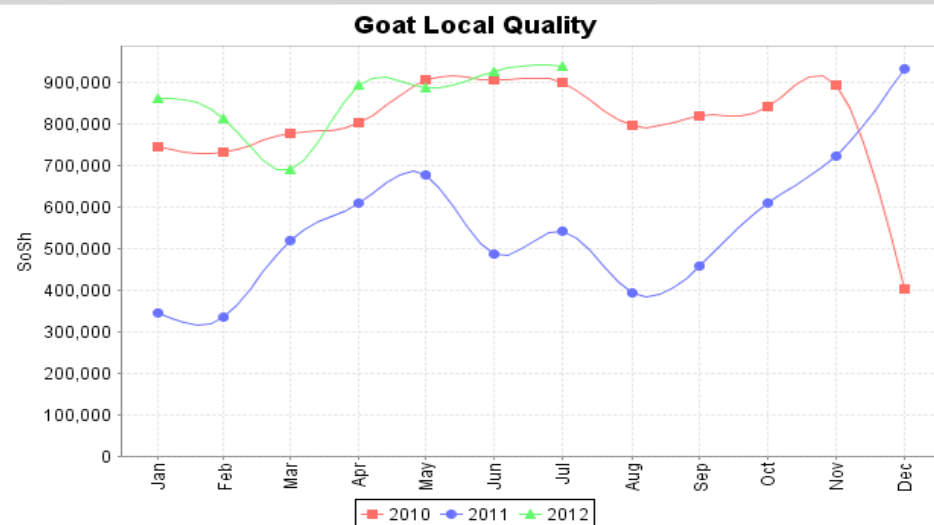
- **Pasture:** Average pasture conditions. *Gu* 2012 rains enhanced dry pasture from last *Deyr* 2011/12
- **Water:** Water availability is normal around the water points (river and *desheks*); water is poor in hinterland along the Kenyan border
- **Livestock Condition:** Average to good livestock body conditions for all species in most livelihoods (PET 3-4 score).
- **Migration:** Normal livestock migration within the region; concentration of livestock nearby water points



Livestock

Trends in Livestock Holdings and Milk Production

Region	Livelihoods	Conception (Gu '12)	Calving/kidding (Gu '12)	Milk production (Gu '12)	Expected calving/ kidding Jul – Dec '12	Trends in Herd Size (Dec '12)
Juba	Southeast Pastoral	Cattle: low Sh/goat: Medium	Cattle: low Sh/goat: High	Low	Cattle: High Sh/goat: Medium	Cattle: Increasing trend (Below Baseline) Sheep/goats: Increasing trend (Below Baseline)
	Southern Inland Pastoral	Camel: low Sh/goat: medium	Camel: Low Sh/goat: high	Below average	Camel: High Sh/goat: Medium	Camel: Increasing trend (Above Baseline) Sheep/goats: Increasing trend (Below Baseline)
	Juba Agro-pastoral	Cattle: low Sh/goat: Medium	Cattle: low Sh/goat: High	Low	Cattle: High Sh/goat: Medium	Cattle: Increasing trend (Below Baseline) Sh/goats: Increasing trend (Below Baseline)



Middle Juba

Regional Trends Local Goat Prices

Jun'11-Jun'12: Increase (90%)

Jan-Jun'12: Increase (8%)

Jun-Jul' 12: Stable

Regional Trends in ToT Goat Local Quality/ Maize

Jun'11-Jun'12: Increase (529%)

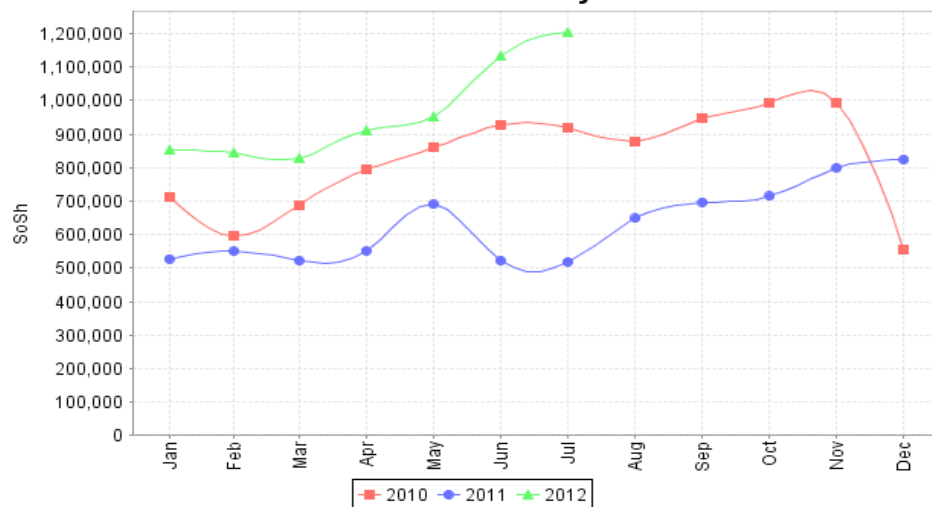
Jan-Jun'12 : Increase (69%)

Jun-Jul' 12 : Increase (11%)

LIVESTOCK

Regional Trends in Terms of Trade in Juba Regions

Goat Local Quality



Lower Juba

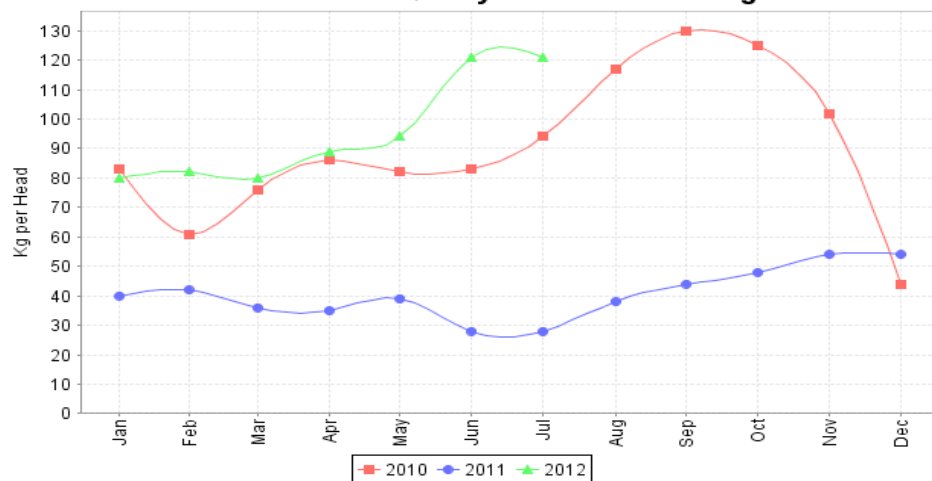
Regional Trends in Goat Local Quality Prices

Jun'11-Jun'12: Increase (116%)

Jan-Jun'12: Increase (33%)

Jun-Jul'12: Increase (6%)

TOT Goat Local Quality To White Maize 1kg



Regional Trends in ToT Goat Local Quality/ Maize

Jun'11-Jun'12: Increase (332%)

Jan-Jun'12: Increase (51%)

Jun-Jul'12: No change

LIVESTOCK

Gu 2012 Assessment Photos

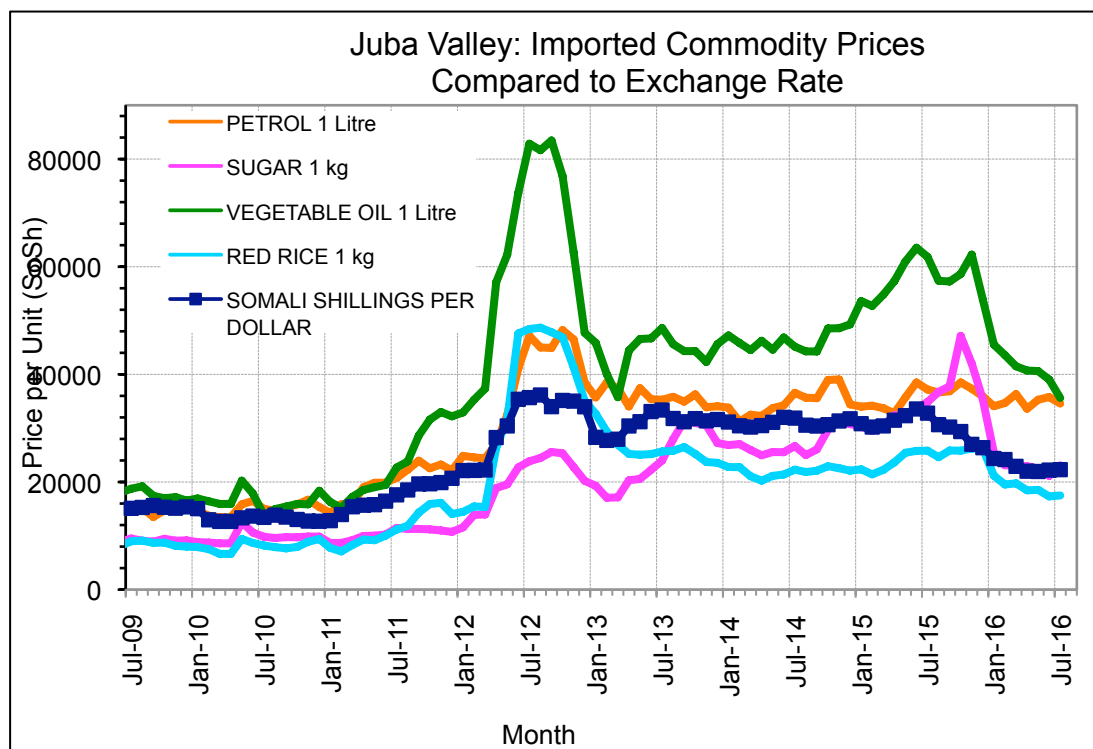


**Good Quality Cattle. Waraaba Guba, Buale,
Middle Juba, FSNAU, July 2012**



**Good Sheep Body Condition, W/Kore,
Buale, Middle, FSNAU, July 2012**

Trends in Imported Commodity Prices Vs Exchange Rate



Factors Affecting Commercial Import Prices:

- Decreasing global prices of some of the imported commodities, e.g. sugar and petrol.
- Restricted flow of goods to Kenya from Kismayo
- Appreciation of SoSh
- Improved imports (Mogadishu port)

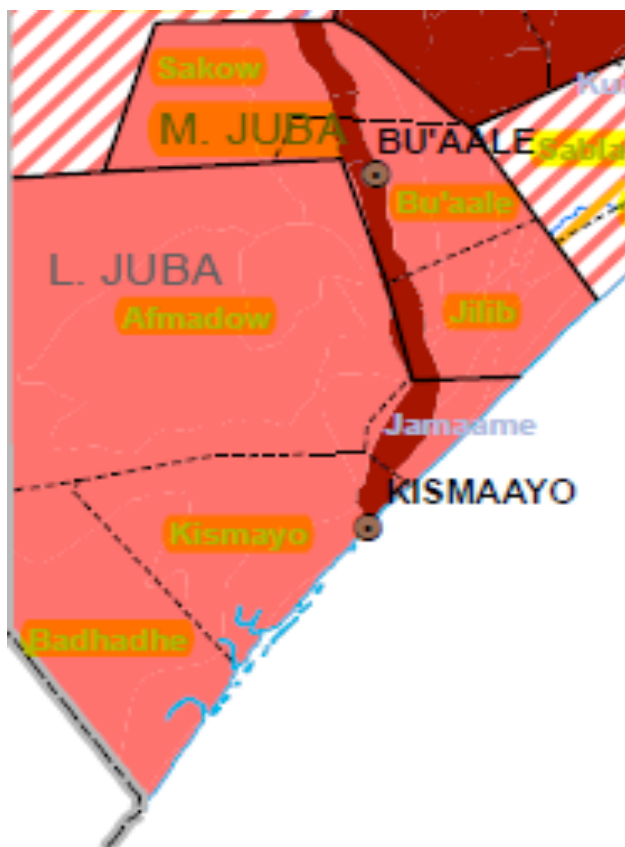
NUTRITION: SUMMARY OF FINDINGS

	Nutrition Surveys (May– July 2012)	MUAC Survey (% <12.5cm)	Health Information System Info	TFC/OTP/ SFC	Other relevant information – Key driving factors	Summary of analysis and change from <i>Deyr 11/12</i>
Juba	<u>Juba Pastoral</u> (N=525) GAM =15.8 (11.8-20.7) SAM = 2.1 (1.0-4.4) Mean WHZ = -0.78±1.09 CDR = 0.44 (0.20-0.99) <5DR = 0.81 (0.29-2.27)	18.1(12.2-26.1)	High (>20%) and decreasing trend of acutely malnourished children	High and fluctuating number of admissions (Jan-July '12)	Morbidity: 16.3 (13-19.7) Suspected measles outbreak reported but controlled	<u>Juba Pastoral –</u> Improved from <i>Very Critical</i> in <i>Deyr '11/12</i>
	<u>Juba Agro-pastoral</u> (N=773) GAM = 25.1(22.2-28.3) SAM = 5.8 (4.4- 7.7) Mean WHZ = -1.16±1.2 CDR =0.25 (0.07-0.88) <5DR = 0.85 (0.41-1.78)	16.1(13.7-18.9)	High (>20%) and decreasing trend of acutely malnourished children	High and fluctuating number of admissions (Jan-July '12)	Morbidity - 15.4 (13.1-17.8) Suspected measles outbreak reported	<u>Juba Agro-pastoral –</u> Very Critical sustained from <i>Deyr '11/12</i>
	<u>Juba Riverine</u> (N=817) GAM = 21.5 (18.8-24.5) SAM = 7.2 (5.6-9.2) Mean WHZ = -1.19 ±1.06 CDR =0.21 (0.11-0.42) <5DR = 1.16 (0.57- 2.32)	14.6(12.4-17.2)	High (>20%) and decreasing trend of acutely malnourished children	High and fluctuating number of admissions (Jan-July '12)	Morbidity – 15.6 (13.4-17.8) Suspected measles outbreak reported	<u>Juba Riverine</u> Very Critical sustained from <i>Deyr '11/12</i>

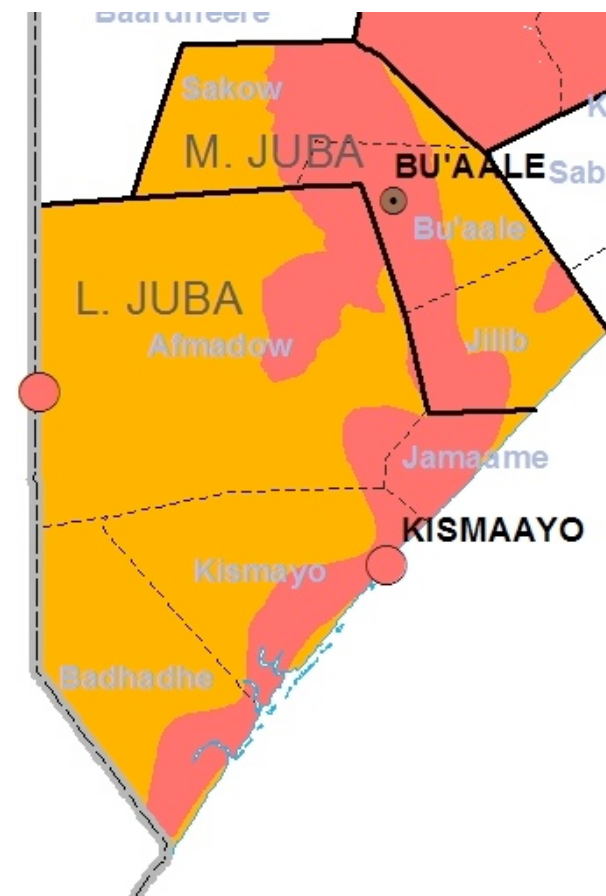
NUTRITION: SUMMARY OF FINDINGS

	Nutrition Surveys (May– July 2012)	MUAC Survey (% <12.5cm)	Health Information System Info	TFC/OTP/ SFC	Other relevant information – Key driving factors	Summary of analysis and change from Deyr 11/12
Juba	<u>Kismayo IDPs (N=547)</u> GAM: 28.0 (24.6-31.6) SAM: 8.2 (5.7-11.7) Mean WHZ= - 1.45 ±0.92 CMR: 0.27 (0.13-0.65) U5MR: 1.71 (1.08-2.71)	13.3 (8.5-14.9)	High (>30%) and fluctuating trend of acutely malnourished children	Stable TFC admission trends	Morbidity: 18.9 (15.5-22.7) Suspected measles outbreak but controlled,	<u>Kismayo IDPs</u> Very Critical sustained Very Critical in Post <i>Deyr '11/12</i>
	<u>Dhobley IDPs (N=781)</u> Exhaustive Survey GAM: 22 SAM: 7.6 Mean WHZ= -0.95 ±1.19 CMR: 0.32 U5MR: 0.96	19.9	N/A	Stable TFC admission trend	Morbidity: 49.6 Suspected measles outbreak but controlled,	<u>Dhobley IDPS</u> Very Critical

Nutrition Situation, January 2012



Nutrition Situation, August 2012



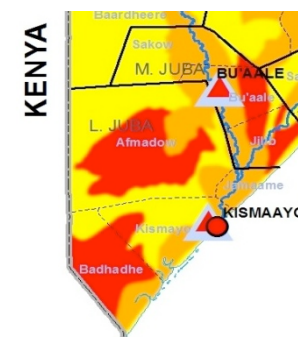
Current Acute Food Insecurity: Household Group Classification

	Phase 1: None	Phase 2: Stressed	Phase 3: Crisis	Phase 4: Emergency	Phase 5: Catastrophe
SIP		100% P			
SEP			100% P		
Lower Juba AP			75% P; 100% P (Hagar)	25% P	
Southern AP			100% P		
Riverine		50% P (except in Sakow); 100% M	100% P; 50% P (Sakow)		

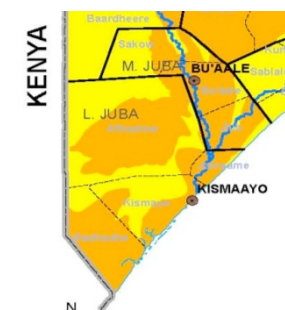
Projected: Acute Food Insecurity: Household Group Classification

	Phase 1: None	Phase 2: Stressed	Phase 3: Crisis	Phase 4: Emergency	Phase 5: Catastrophe
SIP		50% P			
SEP		25% P	75% P		
Lower Juba AP			75% P (except Hagar where 100% are in Crisis)	25% P	
Southern AP			100% P		
Riverine			100% P; 100% M (except in Sakow)		

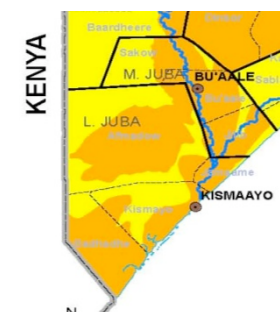
MAP 1: IPC, April 2012



MAP 2: IPC Current July 2012



MAP 3: IPC Projection (Aug-Dec'12)



Livelihood	Current (July'12)	Assumption for Projection (Aug-Dec.'12)
Juba Riverine (Salagla, Sakow, Buale, Jilib, Jamame)	<p>Crisis</p> <p>Malnutrition: Very Critical Food Access: Marginally able to meet food needs</p> <ul style="list-style-type: none"> • Poor Maize crop production • Insignificant stock levels (except Sakow - stocks till Oct'12) • Reduced cultivation agricultural labour opportunities • 40% of the food entitlement from own crop production is missing in Jamame, Jilib and Buale • Decrease (24%) in Cereal Prices (Jan Jun'12) • Increase (8%) and 33% in local goat prices in Middle Juba and Lower Juba, respectively (Jan Jun'12) • Increase (60%) in ToT Local Goat to Maize (Jan Jun'12) • Increased income from unskilled labour (33%) • High debt levels (USD 100) • Tense security situation 	<p>Crisis</p> <p>Food Access: Marginally able to meet food needs</p> <p>Positive Factors</p> <ul style="list-style-type: none"> • Labour opportunities will increase with off-season/ harvest / Deyr planting from End of Sept'12 <p>Negative Factors</p> <ul style="list-style-type: none"> • Likely increase in debt levels • Cereal prices likely to increase • In case of El Nino rains, transport access will be hampered, hence increase in food prices • Tense security situation • Limited humanitarian access
South East Pastoral	<p>Crisis</p> <p>Malnutrition: Critical Food Access: Marginally able to meet food needs</p> <ul style="list-style-type: none"> • Decrease (13%) in Cereal Prices (Jan Jun'12) • Increase (33%) in local goat prices (Jan Jun'12) • Increase (51%) in ToT Local Goat to Maize (Jan Jun'12) • Average milk production • Average rangeland condition in most parts • High taxation • High debt level (150 USD) • Insecurity: Extremely tense 	<p>Crisis</p> <p>Food Access: Marginally able to meet food needs</p> <p>Positive Factors</p> <ul style="list-style-type: none"> • Good Deyr rains expected • Improvement in goat milk production • Expected increase in herd size • Expected improvement in pasture availability <p>Negative Factors</p> <ul style="list-style-type: none"> • Cereal prices will likely increase • ToT levels likely to decrease • Debt level to sustain high levels • Restricted humanitarian space in most areas due to insecurity • Limited cattle herd size due to high off-take from the past drought seasons

Area Classification Justification Summary

Livelihood	Current (July'12)	Assumption for Projection (Aug-Dec.'12)
Lower Juba Agropastoral	<p>Crisis</p> <p>Malnutrition: Very Critical Food Access: Marginally able to meet food needs</p> <ul style="list-style-type: none"> Decrease (13%) in Cereal Prices (Jan Jun'12) Increase (33%) in local goat prices (Jan Jun'12) Increase (51%) in ToT Local Goat to Maize (Jan Jun'12) Average milk production Complete crop failure No stocks in the poor HHs (except Afmadow – 3 months) Livestock herd size is below baseline levels Average rangeland conditions in most parts Extremely tense security High debt levels (USD125) Employing crisis coping strategies 	<p>Crisis</p> <p>Food Access: Marginally able to meet food needs</p> <p>Positive Factors</p> <ul style="list-style-type: none"> Projected good <i>Deyr</i> rains Milk availability likely to increase Expected agricultural labour opportunities in Jamaame <p>Negative Factors</p> <ul style="list-style-type: none"> Expected reduction of income from charcoal burning (ban) Cereal prices likely to increase ToT will reduce Insecurity likely to sustain /humanitarian assistance likely to remain restricted in most parts except for Afmadow and Badhaade district
Southern Agropastoral	<p>Crisis</p> <p>Malnutrition: Very Critical Food Access: Marginally able to meet food needs</p> <ul style="list-style-type: none"> Insignificant crop production; limited stock availability Improved milk production Lack of agriculture labour Decrease (24%) in cereal prices (Jan Jun'12) Increase (8%) and 33% in local goat prices in Middle Juba and Lower Juba, respectively (Jan Jun'12) Distress sale of livestock (breeding stock) Herd size is below baseline levels Poor to average rangeland conditions Limited number of saleable livestock High debt levels (USD 125) 	<p>Crisis</p> <p>Food Access: Marginally able to meet food needs</p> <p>Positive Factors</p> <ul style="list-style-type: none"> Projected good <i>Deyr</i> rains Expected medium cattle calving rates, herd size and milk production Expected improvement in rangeland conditions <p>Negative Factors</p> <ul style="list-style-type: none"> Cereal prices likely to increase Increased insecurity and restricted humanitarian access Debt level to remain high

Affected Rural Population by Districts - Current

Affected Regions and District		UNDP 2005 Rural Population	Assessed and High Risk Population in Crisis and Emergency				
			Post <i>Deyr</i> Projection		Post <i>Gu</i> 2012		
			Crisis	Emergency	Stressed	Crisis	Emergency
Middle Juba	Bu'aale	45,901	10,000	16,000	13,000	14,000	0
	Jilib	83,464	14,000	24,000	19,000	19,000	1,000
	Saakow/Salagle	54,773	11,000	10,000	6,000	12,000	0
	SUB-TOTAL	184,138	35,000	50,000	38,000	45,000	1,000
Lower Juba	Afmadow/Xagar	44,212	5,000	4,000	3,000	10,000	0
	Badhaadhe	32,828	3,000	5,000	1,000	7,000	1,000
	Jamaame	106,734	21,000	27,000	26,000	19,000	3,000
	Kismaayo	77,334	10,000	9,000	13,000	12,000	2,000
	SUB-TOTAL	261,108	39,000	45,000	43,000	48,000	6,000
GRAND-TOTAL		445,246	74,000	95,000	81,000	93,000	7,000
Total Affected Population in CRISIS & EMERGENCY			169,000		81,000	100,000	

Affected Rural Population by Livelihoods - Current

Affected Regions and Livelihood Zone		Estimated Population in Livelihood Zones	Assessed and High Risk Population in Crisis and Emergency				
			Post Deyr Projection		Post Gu 2012		
			Crisis	Emergency	Stressed	Crisis	Emergency
Middle Juba	Coastal pastoral: goats & cattle	10,984	0	0	0	0	0
	Juba Pump Irrigated Riv	17,297	4,000	10,000	3,000	3,000	0
	Lower Juba Agro-Past	8,780	1,000	2,000	0	2,000	1,000
	South-East Pastoral	18,232	1,000	4,000	0	6,000	0
	Southern Agro-Past	46,816	12,000	0	0	16,000	0
	Southern Inland Past	22,725	0	0	3,000	0	0
	Southern Juba Riv	59,304	17,000	34,000	32,000	18,000	0
	SUB-TOTAL	184,138	35,000	50,000	38,000	45,000	1,000
Lower Juba	Coastal pastoral: goats & cattle	33,354	0	0	0	0	0
	Lower Juba Agro-Past	70,183	17,000	4,000	0	15,000	6,000
	South-East Pastoral	38,810	3,000	8,000	0	12,000	0
	Southern Agro-Past	11,637	3,000	0	0	4,000	0
	Southern Inland Past	50,119	0	0	12,000	0	0
	Southern Juba Riv	57,005	16,000	33,000	31,000	17,000	0
	SUB-TOTAL	261,108	39,000	45,000	43,000	48,000	6,000
GRAND-TOTAL		445,246	74,000	95,000	81,000	93,000	7,000
Total Affected Population in CRISIS & EMERGENCY			169,000		81,000	100,000	

Affected Urban Population by Districts - Current

District		UNDP 2005 Urban Population	Assessed and High Risk Population in Crisis and Emergency							
			Deyr 2011/12				Post Gu 2012			
			Stressed	Crisis	Emergency	Total in AFLC or HE as % of Urban population	Stressed	Crisis	Emergency	Total Urban in Crisis and Emergency as % of Urban population
Juba Dhexe(Middle)	Bu'aale	13,588	0	0	7,000	52	0	7,000	0	52
	Jilib	29,951	0	0	15,000	50	0	15,000	0	50
	Saakow/Salagle	11,200	0	0	4,000	36	0	4,000	0	36
	SUB-TOTAL	54,739	0	0	26,000	47	0	26,000	0	47
Juba Hoose(Lower)	Afmadow/Xagar	7,122	0	0	2,000	28	0	1,000	1,000	28
	Badhaadhe	5,812	0	0	2,000	34	0	1,000	1,000	34
	Jamaame	22,415	0	0	8,000	36	0	4,000	4,000	36
	Kismaayo	89,333	0	0	31,000	35	0	16,000	16,000	36
	SUB-TOTAL	124,682	0	0	43,000	34	0	22,000	22,000	35
GRAND TOTAL		179,421	0	0	69,000	38	0	48,000	22,000	39

Affected Rural Population by Districts - Projection

Affected Regions and District		UNDP 2005 Rural Population	Assessed and High Risk Population in Crisis and Emergency				
			Post <i>Deyr</i> Projection		Post <i>Gu</i> Projection		
			Crisis	Emergency	Stressed	Crisis	Emergency
Middle Juba	Bu'aale	45,901	10,000	16,000	1,000	13,000	0
	Jilib	83,464	14,000	24,000	1,000	18,000	1,000
	Saakow/Salagle	54,773	11,000	10,000	2,000	15,000	0
	SUB-TOTAL	184,138	35,000	50,000	4,000	46,000	1,000
Lower Juba	Afmadow/Xagar	44,212	5,000	4,000	3,000	9,000	0
	Badhaadhe	32,828	3,000	5,000	2,000	6,000	1,000
	Jamaame	106,734	21,000	27,000	0	19,000	3,000
	Kismaayo	77,334	10,000	9,000	5,000	11,000	2,000
	SUB-TOTAL	261,108	39,000	45,000	10,000	45,000	6,000
GRAND-TOTAL		445,246	74,000	95,000	14,000	91,000	7,000
Total Affected Population in CRISIS & EMERGENCY			169,000		14,000	98,000	

Affected Rural Population by Livelihoods - Projection

Affected Regions and Livelihood Zone		Estimated Population in Livelihood Zones	Assessed and High Risk Population in Crisis and Emergency				
			Post <i>Deyr</i> Projection		Post <i>Gu</i> Projection		
			Crisis	Emergency	Stressed	Crisis	Emergency
Middle Juba	Coastal pastoral: goats & cattle	10,984	0	0	0	0	0
	Juba Pump Irrigated Riv	17,297	4,000	10,000	0	6,000	0
	Lower Juba Agro-Past	8,780	1,000	2,000	0	2,000	1,000
	South-East Pastoral	18,232	1,000	4,000	2,000	4,000	0
	Southern Agro-Past	46,816	12,000	0	0	16,000	0
	Southern Inland Past	22,725	0	0	2,000	0	0
	Southern Juba Riv	59,304	17,000	34,000	0	18,000	0
	SUB-TOTAL	184,138	35,000	50,000	4,000	46,000	1,000
Lower Juba	Coastal pastoral: goats & cattle	33,354	0	0	0	0	0
	Lower Juba Agro-Past	70,183	17,000	4,000	0	15,000	6,000
	South-East Pastoral	38,810	3,000	8,000	3,000	9,000	0
	Southern Agro-Past	11,637	3,000	0	0	4,000	0
	Southern Inland Past	50,119	0	0	7,000	0	0
	Southern Juba Riv	57,005	16,000	33,000	0	17,000	0
	SUB-TOTAL	261,108	39,000	45,000	10,000	45,000	6,000
GRAND-TOTAL		445,246	74,000	95,000	14,000	91,000	7,000
Total Affected Population in CRISIS & EMERGENCY			169,000		14,000	98,000	

District		UNDP 2005 Urban Population	Assessed and High Risk Population in Crisis and Emergency							
			Deyr 2011/12				Post Gu Projection			
			Stressed	Crisis	Emergency	Total in AFLC or HE as % of Urban population	Stressed	Crisis	Emergency	Total Urban in Crisis and Emergency as % of Urban population
Juba Dhexe(Middle)	Bu'aale	13,588	0	0	7,000	52	0	7,000	0	52
	Jilib	29,951	0	0	15,000	50	0	15,000	0	50
	Saakow/Salagle	11,200	0	0	4,000	36	0	4,000	0	36
	SUB-TOTAL	54,739	0	0	26,000	47	0	26,000	0	47
Juba Hoose(Lower)	Afmadow/Xagar	7,122	0	0	2,000	28	0	1,000	1,000	28
	Badhaadhe	5,812	0	0	2,000	34	0	1,000	1,000	34
	Jamaame	22,415	0	0	8,000	36	0	4,000	4,000	36
	Kismaayo	89,333	0	0	31,000	35	0	16,000	16,000	36
	SUB-TOTAL	124,682	0	0	43,000	34	0	22,000	22,000	35
GRAND TOTAL		179,421	0	0	69,000	38	0	48,000	22,000	39

The End