



**Food Security and
Nutrition Analysis Unit
Somalia**

*Information for Better
Livelihoods*

Post Gu 2010

Presentation

August 18th 2010

Juba Regions



EUROPEAN COMMISSION



USAID
FROM THE AMERICAN PEOPLE



Swiss Agency for Development
and Cooperation SDC



Cooperazione Italiana
allo Sviluppo
Ministero Affari Esteri



Common
Humanitarian Fund
Somalia

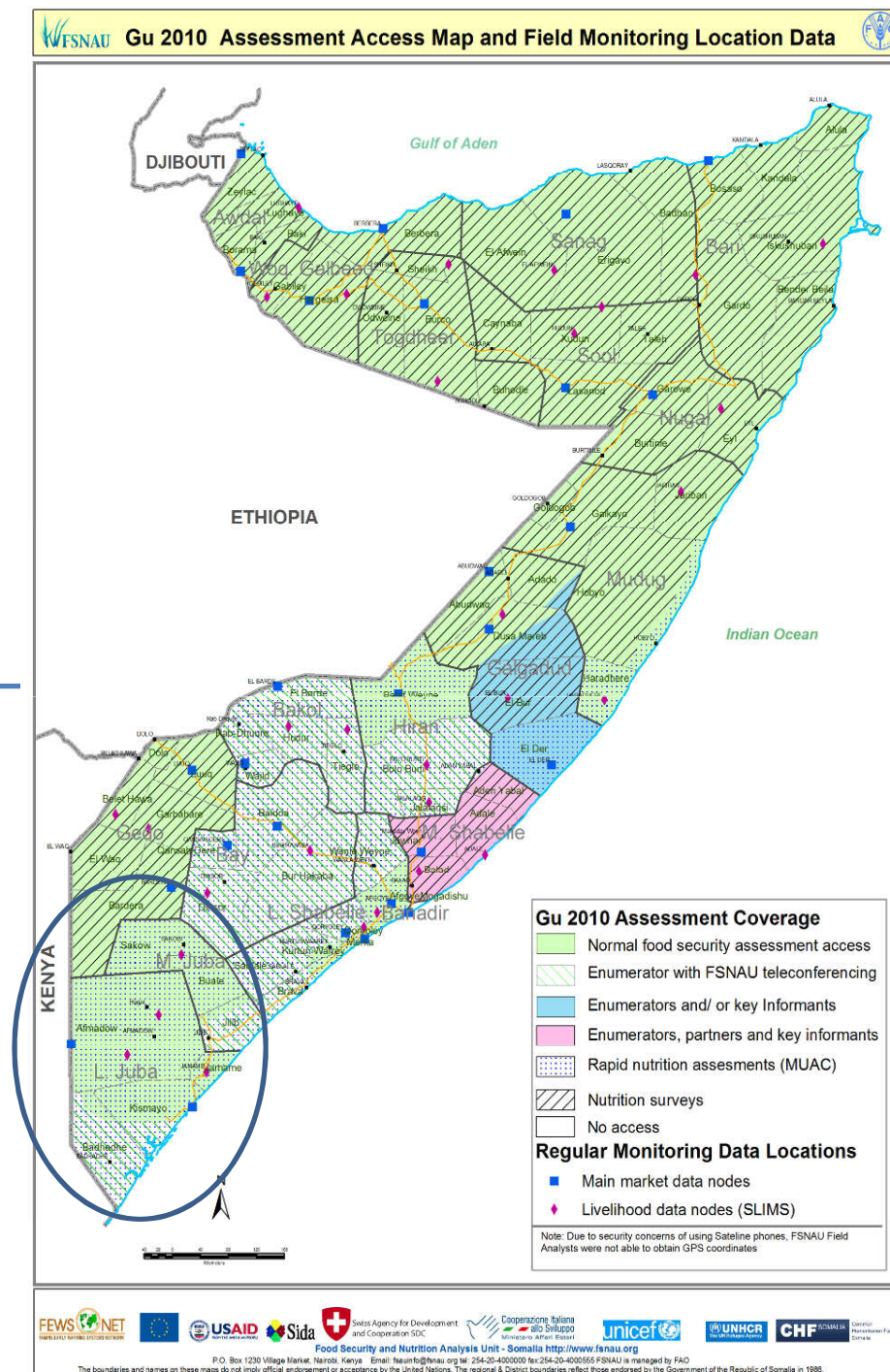


Gu 2010 Seasonal Assessment Coverage

Field Access and Field Data Locations

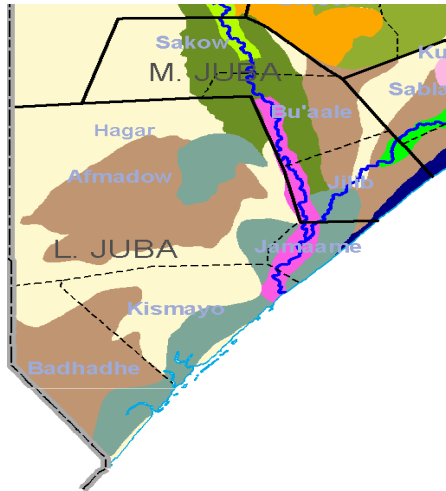
Gu '10 Field Coverage in Juba regions:

- Normal access in Buale, Sakow, eastern part of Jilib districts of M. Juba and Afmadow, Jammame and parts of Kismayo districts in L. Juba;
- Key informants in western part of Jilib district of M. Juba and Badhade and parts of Kismayo districts in L. Juba



Main Livelihood Groups

Sources of Food and Income



Livelihood Groups & Main Sources of Food and Income

- **2 Pastoral Livelihoods (Southeast and Southern Inland Pastoralists)**
 - ❑ Primary sources of income of poor: sale of livestock & livestock products
 - ❑ Primary sources of food of poor: purchase
 - ❑ Primary livelihood asset of poor: camel, cattle, sheep/goat
- **2 Agro-pastoral Livelihoods (Southern and Lower Juba Agropastoralists)**
 - ❑ Southern Agropastoral are more pastoral in Afmadow, L. Juba, than those in the M. Juba and Jammaame (L. Juba) who are more agriculturalist – main sources of income: sale of livestock & livestock products, self-employment, employment, crop sales; main source of food is own production and purchases
 - ❑ Lower Juba Agropastoral are more pastoral – main source of income: sales of livestock products and wild foods; main source of food: own production and purchases.
 - ❑ Riverine (M. and L. Juba)
 - Main source of income of poor : Crop sales, wage labour, self-employment (collection of bush products)
 - Main sources of food of poor: Own production and market purchase



Climate

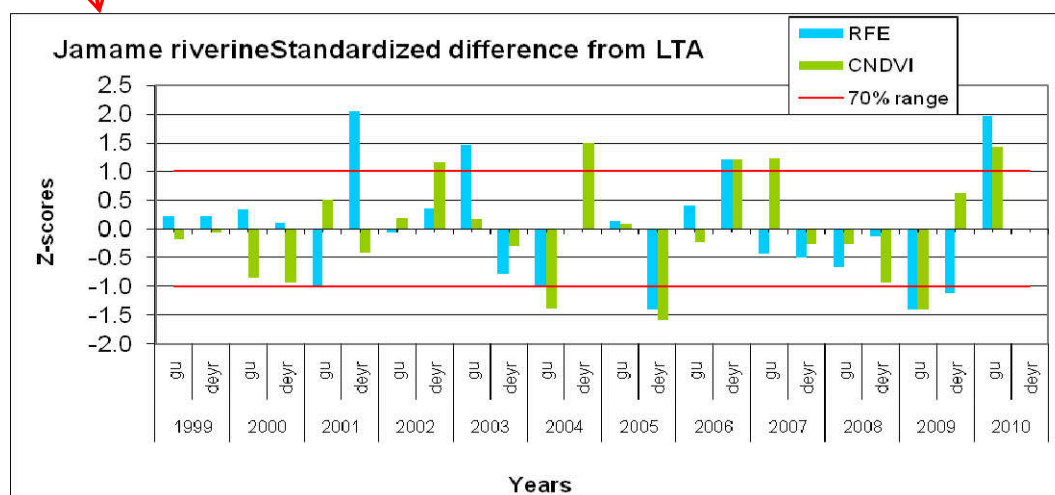
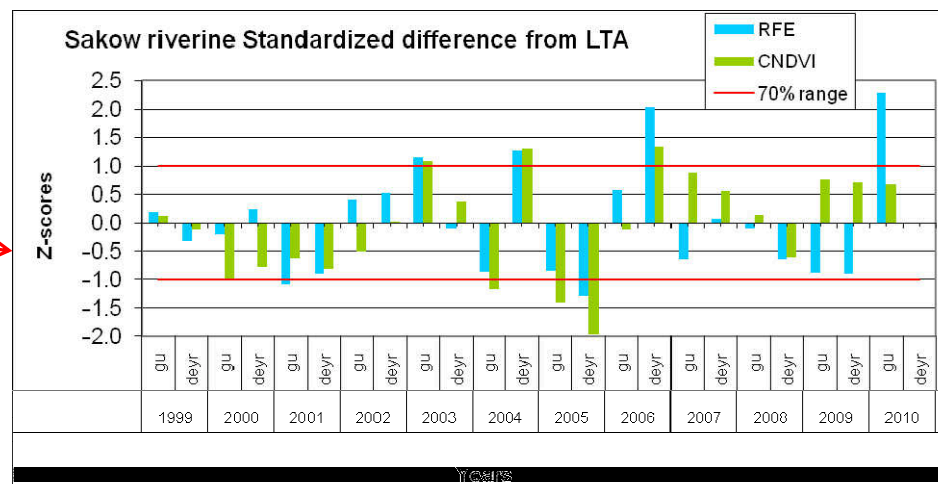
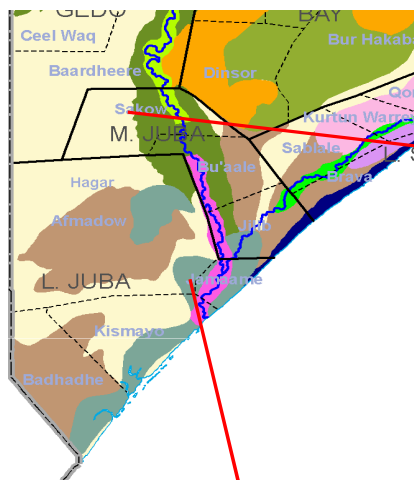
Performance of the *Gu* 2010 Rainfall

-
- Start of Season: started early April 2010, but good unseasonal rains were received in March 2010
 - Temporal and Spatial Distribution: good in terms of coverage and intensity; long dry spell all in 1st and 3rd dekad of May. Light shower of rains continued to be received in June – July 2010.
 - Normal rains: All parts of the regions except localized areas
 - Poor rains: parts of Salagle, NUSDUNIAY(Sakow), and Jira plain of Afmadow
 - Floods: Occurred in May in Juba riverine LZ, causing damage to the standing crops

Climate

Vegetation Conditions

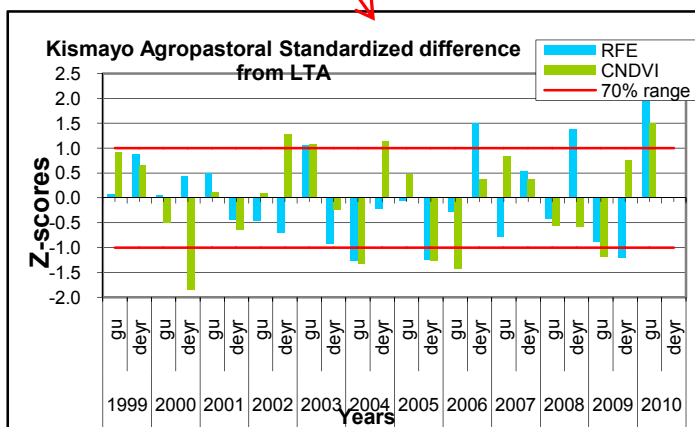
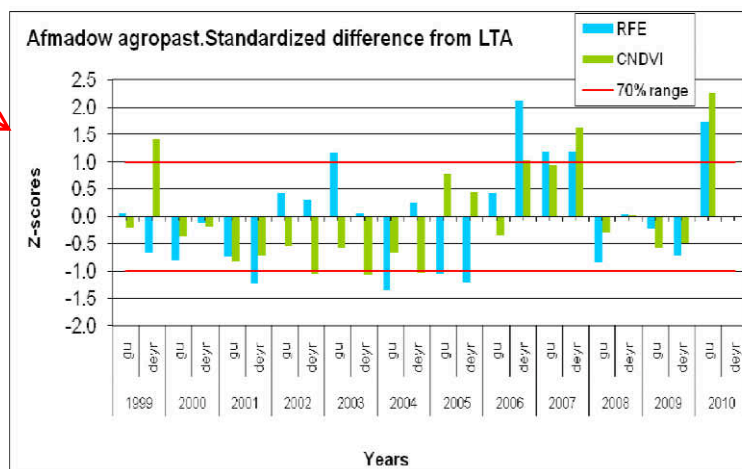
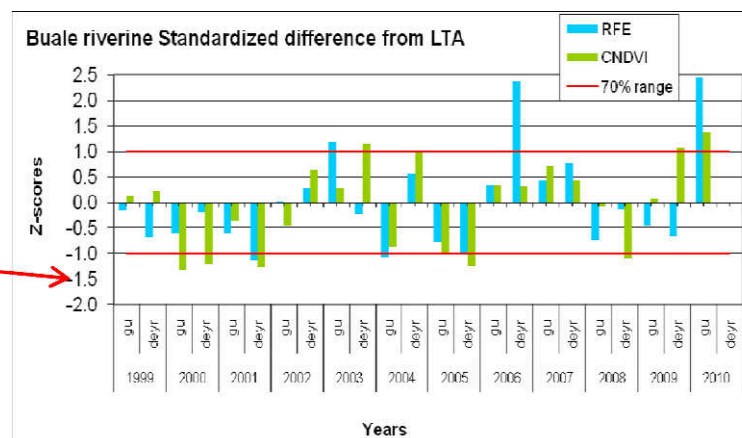
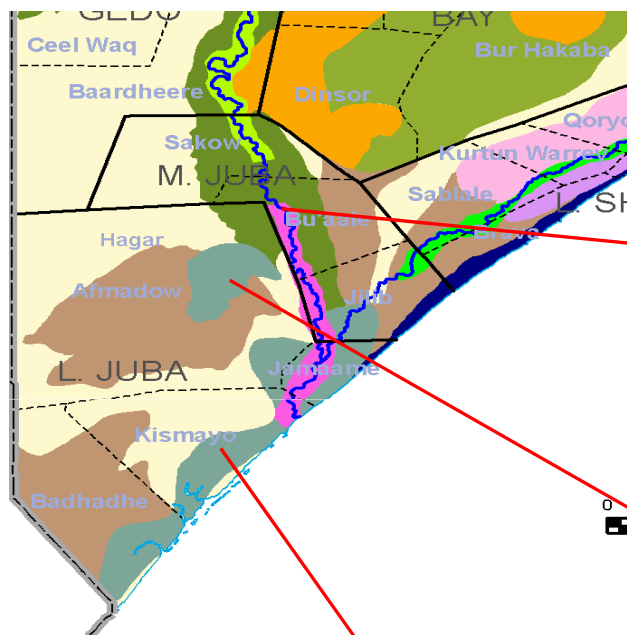
Trends in NDVI & RFE by district & land cover



Climate

Vegetation Conditions

Trends in NDVI & RFE by district & land cover





Civil Insecurity

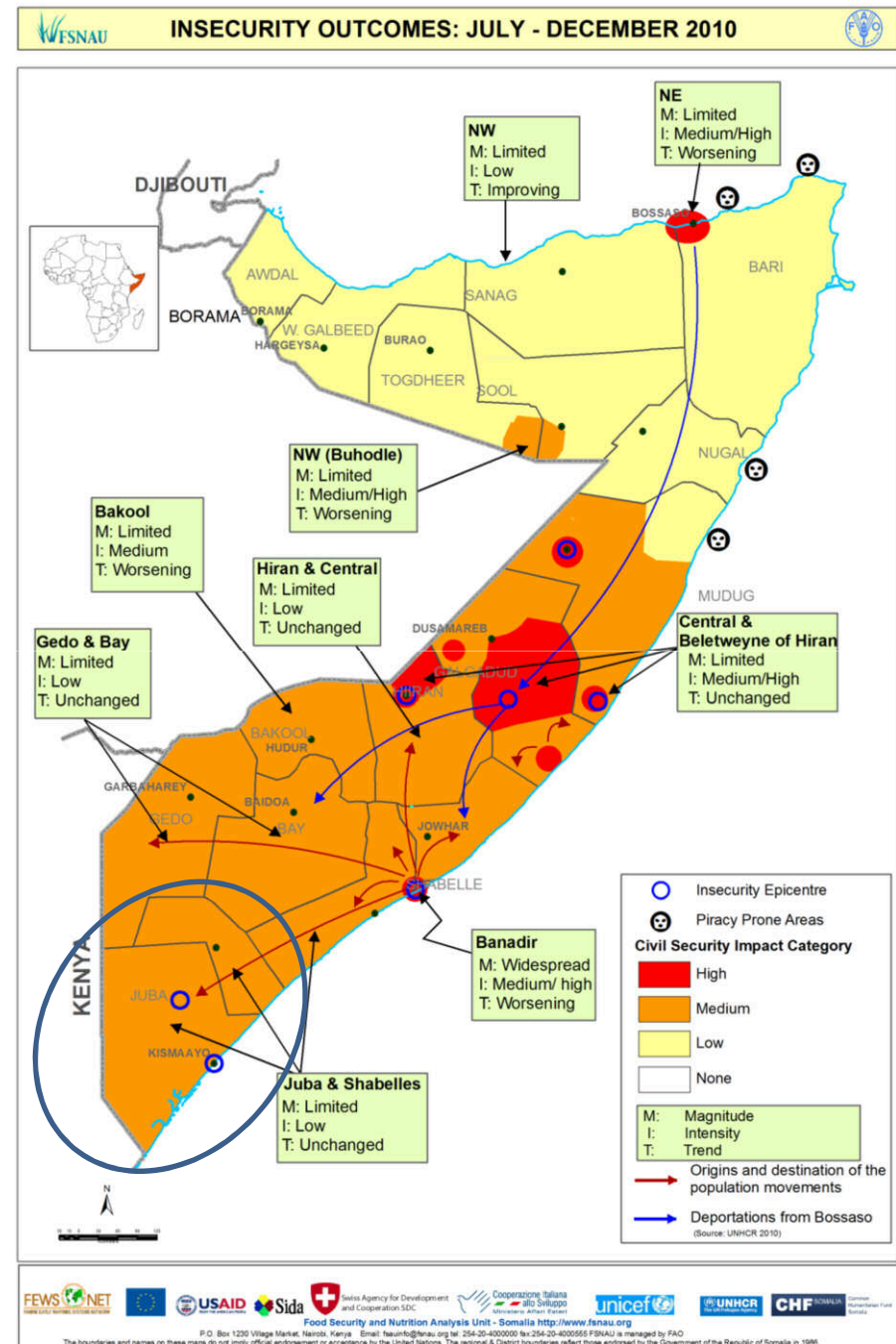
❖ Civil Security Situation:

- High tension among conflicting sides in the region
- Increased displacements from main towns to rural areas and to Kenya refugee camps

❖ Direct and Indirect Impacts on Food Security & Nutrition:

- Medium Impact
- Short-term restrictions on trade movement with possible long term effects.

Source: FSNAU & Protection Cluster





Agriculture

Gu 2010 Cereal Production Estimates

Juba Hoose (Lower) Cereal Production Estimates						
Districts	Gu 2010 Production in MT		Total Cereal	Gu 2010 as % of Gu 2009	Gu 2010 as % of Gu PWA (1995-2009)	Gu 2010 as % of 5 year average (2005-2009)
	Maize	Sorghum				
Afmadow	346	80	426	73%	116%	287%
Hagar	500	165	665	-	227%	404%
Badhaadhe	240	0	240	-	51%	108%
Jamaame	2,310	0	2,310	-	65%	177%
Kismaayo	1,300	0	1,300	-	199%	513%
Juba Hoose (Lower) Gu 2010 Total	4,696	245	4,941	837%	93%	246%
Juba Dhexe (Middle) Cereal Production Estimates						
Districts	Gu 2010 Production in MT		Total Cereal	Gu 2010 as % of Gu 2009	Gu 2010 as % of Gu PWA (1995-2009)	Gu 2010 as % of 5 year average (2005-2009)
	Maize	Sorghum				
Bu'aale	2,000	440	2,440	67%	135%	214%
Jilib	3,480	0	3,480	84%	86%	134%
Saakow/Salagle	0	6,250	6,250	50%	189%	230%
Juba Dhexe (Middle) Gu 2010 Total	5,480	6,690	12,170	60%	133%	188%



Agriculture

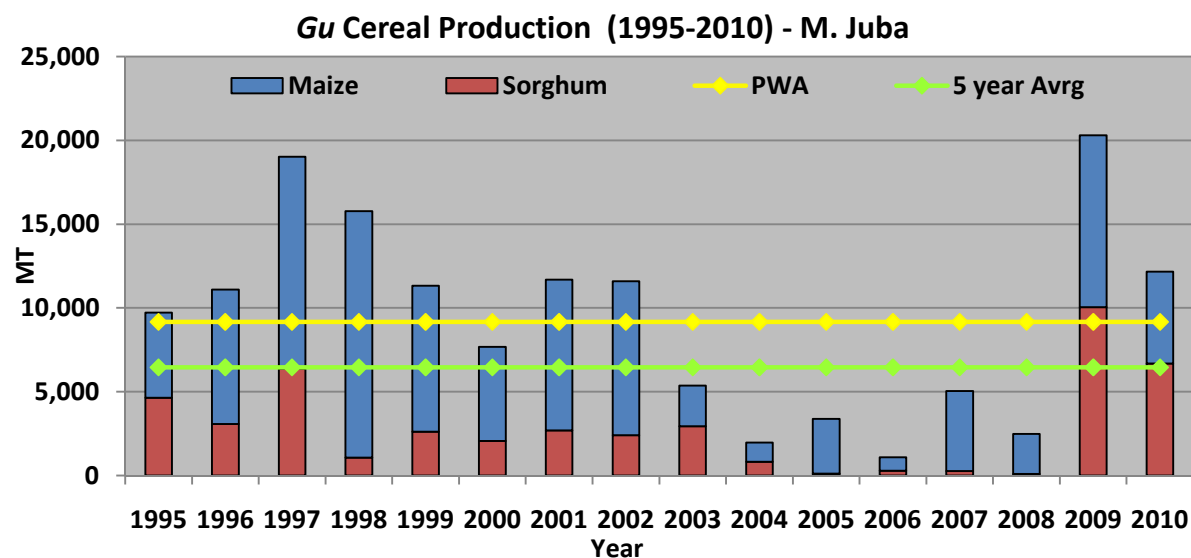
Cereal Production Estimates Plus Off-season Maize

Juba Hoose (Lower) Cereal Production Estimates plus Off-Season						
Districts	Gu 2010 Production in MT		Total Cereal	Gu 2010 as % of Gu 2009	Gu 2010 as % of Gu PWA (1995-2009)	Gu 2010 as % of 5-year average (2005-2009)
	Maize	Sorghum				
Afmadow	346	80	426	73%	116%	287%
Hagar	500	165	665	6650%	227%	891%
Badhaadhe	240	0	240	-	51%	108%
Jamaame	3,975	0	3,975	33%	92%	107%
Kismaayo	1,300	0	1,300	269%	166%	200%
Juba Hoose (Lower) Gu 2010 Total	6,361	245	6,606	50%	106%	137%
Juba Dhexe (Middle) Off-Season Cereal Production Estimates plus Off-Season						
Districts	Gu 2010 Production in MT		Total Cereal	Gu 2010 as % of Gu 2009	Gu 2010 as % of Gu PWA (1995-2009)	Gu 2010 as % of 5 year average (2005-2009)
	Maize	Sorghum				
Bu'aale	3,800	440	4,240	105%	219%	279%
Jilib	5,880	0	5,880	118%	142%	205%
Sakow	2,400	6,250	8,650	67%	256%	292%
Juba Dhexe (Middle) Gu 2010 Total	12,080	6,690	18,770	86%	198%	256%

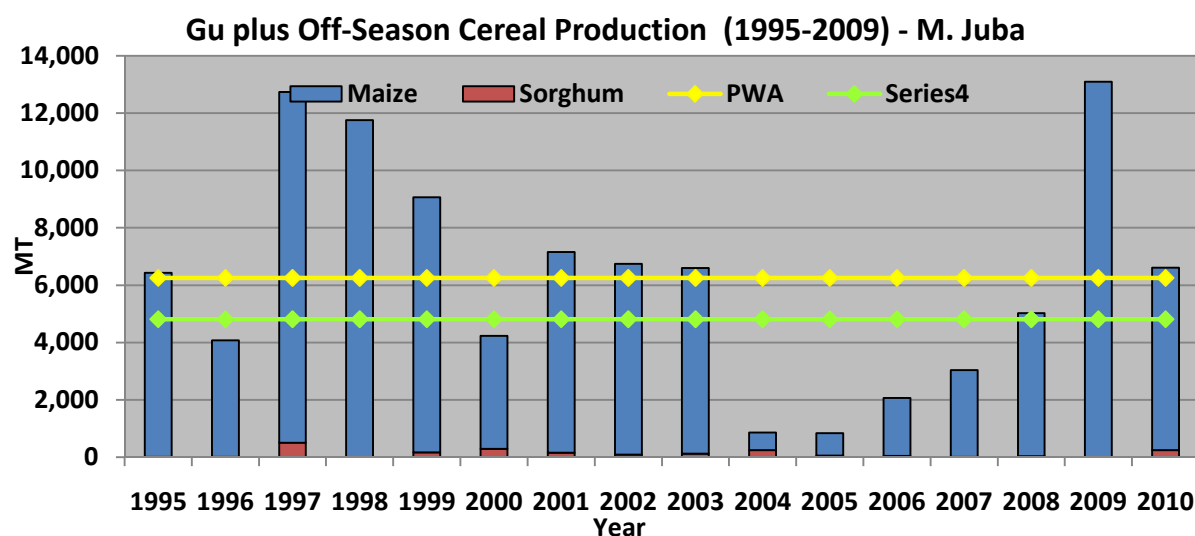


Agriculture

Gu 2010 Cereal Production Plus Off season in Middle Juba



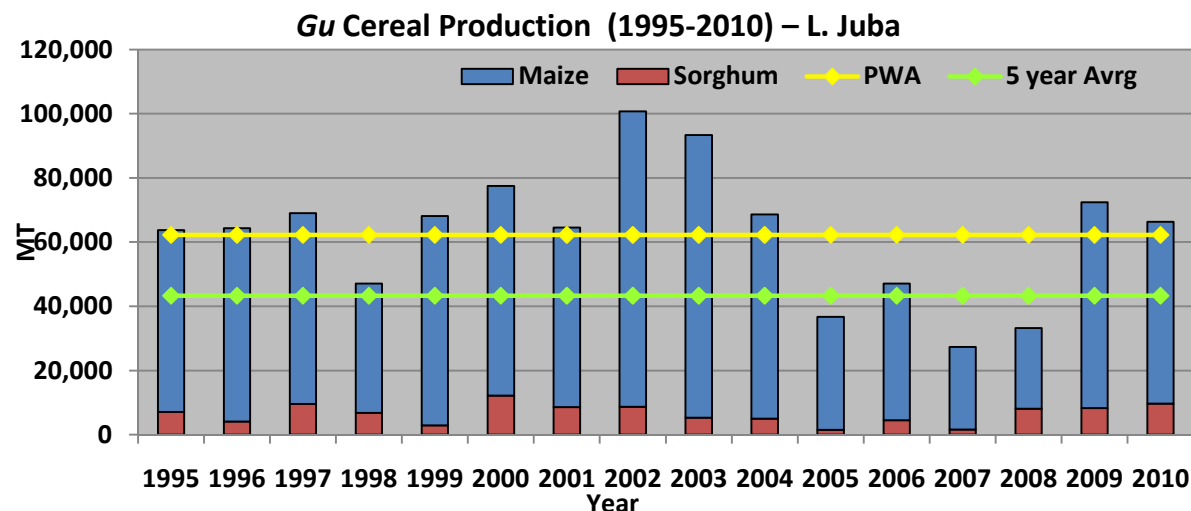
**Regional Trend in
Gu Cereal
Production
(Middle Juba)**



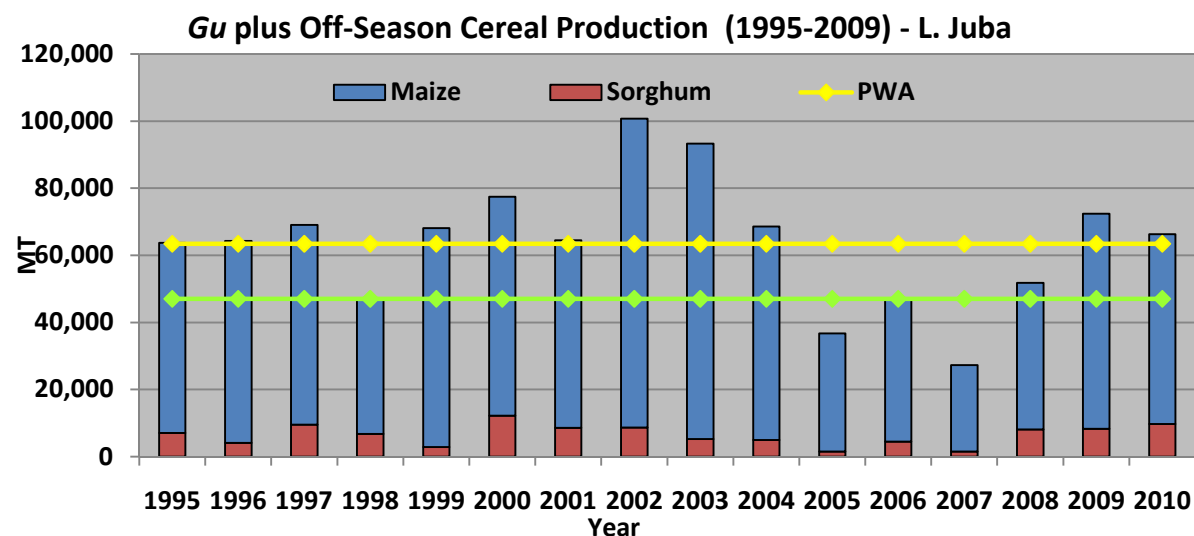
**Regional Trend in Gu
Cereal Production Plus
Off-season (Middle
Juba)**

Agriculture

Gu 2010 Cereal Production Plus Off season in Lower Juba



**Regional Trend in
Gu Cereal Production
(Lower Juba)**



**Regional Trend in Gu
Cereal Production Plus
Off-season (Lower
Juba)**



Agriculture

Off-Season Crop Estimates

Regions	Off Season: Sep-Oct. 2010		
	Maize (MT)	Sesame (MT)	Cowpea (MT)
Middle Juba	6,600	660	140
Lower Juba	1,700	1,240	660
Total	8,300	1,900	800

Agriculture

Gu 2010 Assessment Photos

1



1. Flooded Crop Maize Field. Farbito, Buale, M. Juba, July '10.

2. Off-season Maize Crop. Birbirisa, Sakow, M. Juba, July '10

3. Poor Maize Crop due to moisture stress. Maligey Anole, Buale, M. Juba, July '10.

2



3

Agriculture

Gu 2010 Assessment Photos



1. Flooded Fallow Fields.
Koban, Jammame, L. Juba, July '10.

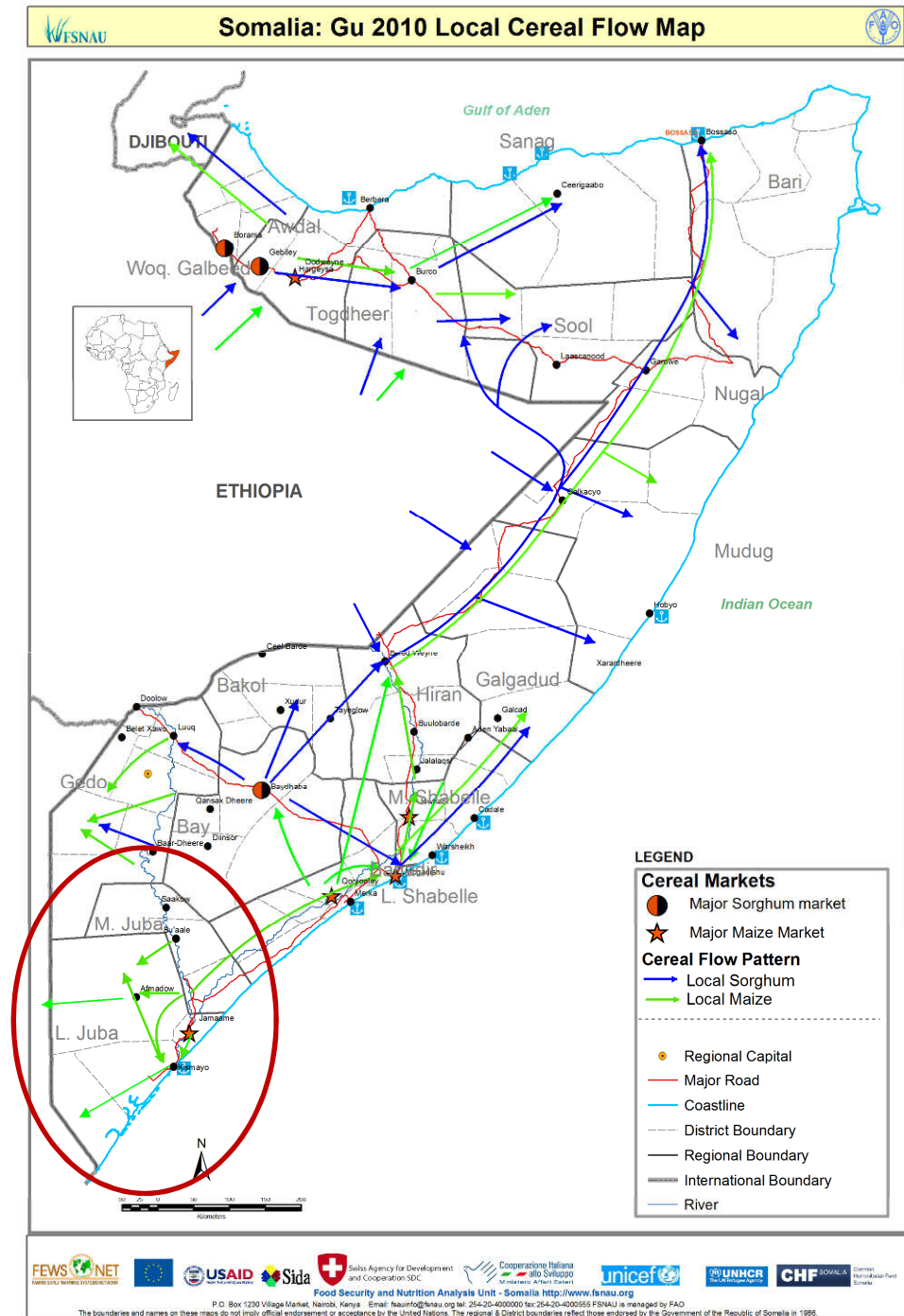


2. Good Maize Crop. Kamsuma, Jammame, L. Juba,
July '10.



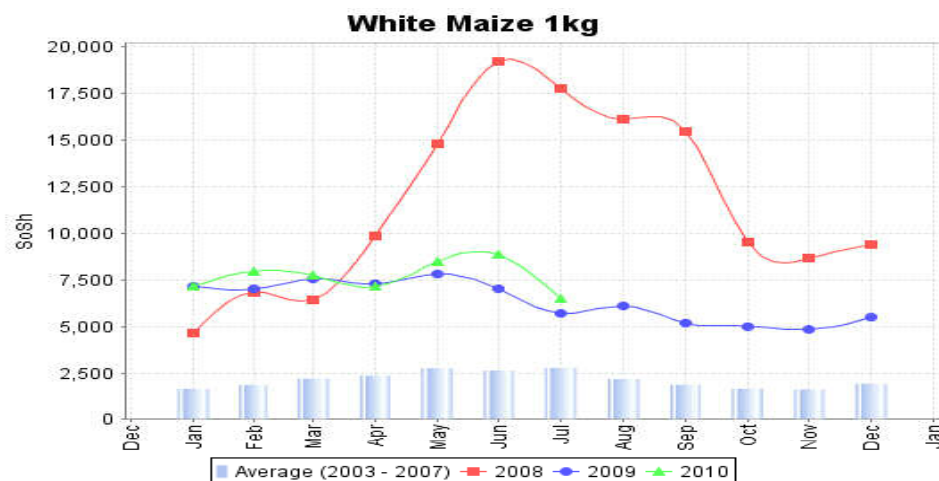
Agriculture

Gu '10 Local Cereal Flow Map

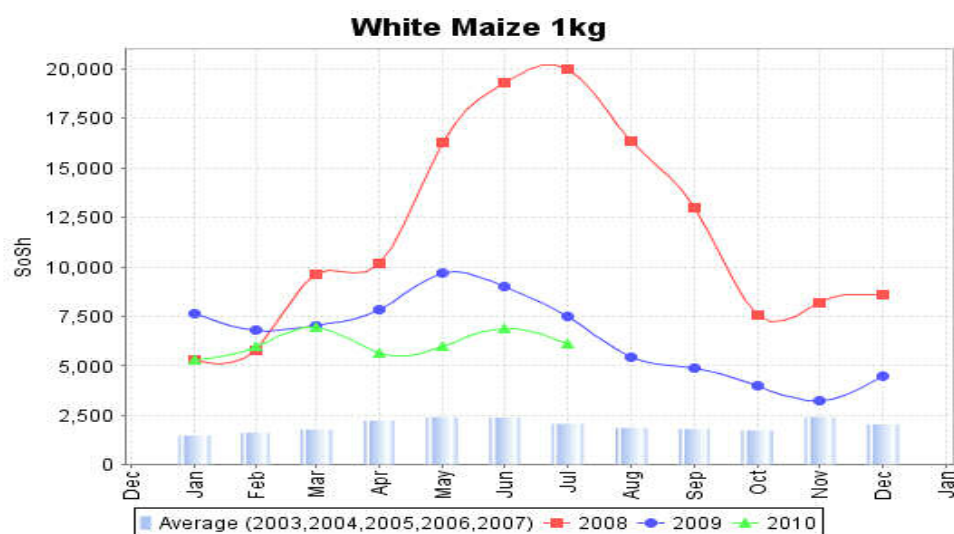


Agriculture

Regional Trends in Cereal Prices in Juba Regions



Regional Trend in Cereal Prices (maize) in Middle Juba (Buale & Jilib)



Regional Trend in Cereal Prices (maize) in Lower Juba (Jammame)

Agriculture

Labour Rates and Availability

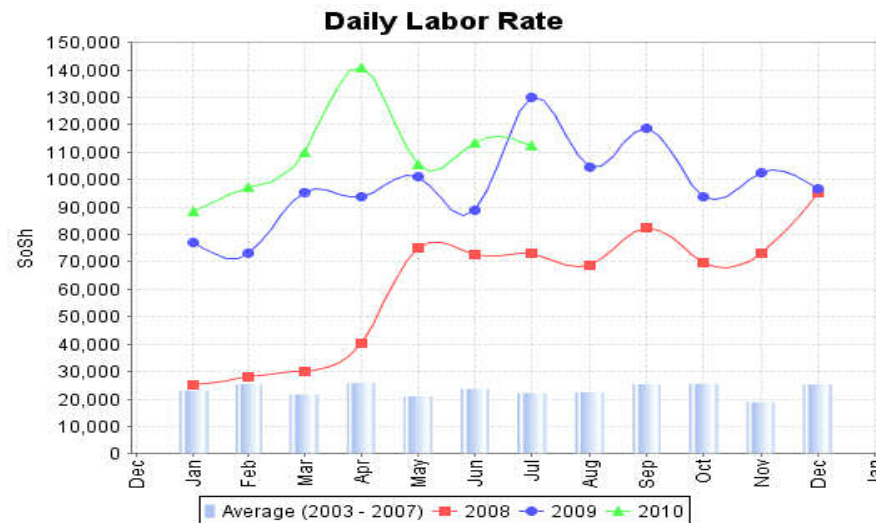


Regional Trend:

Daily Labour Rate in Middle Juba (Buale & Jilib)

Factors Influencing Wage Labour Availability

- Low Trade Activities
- Floods



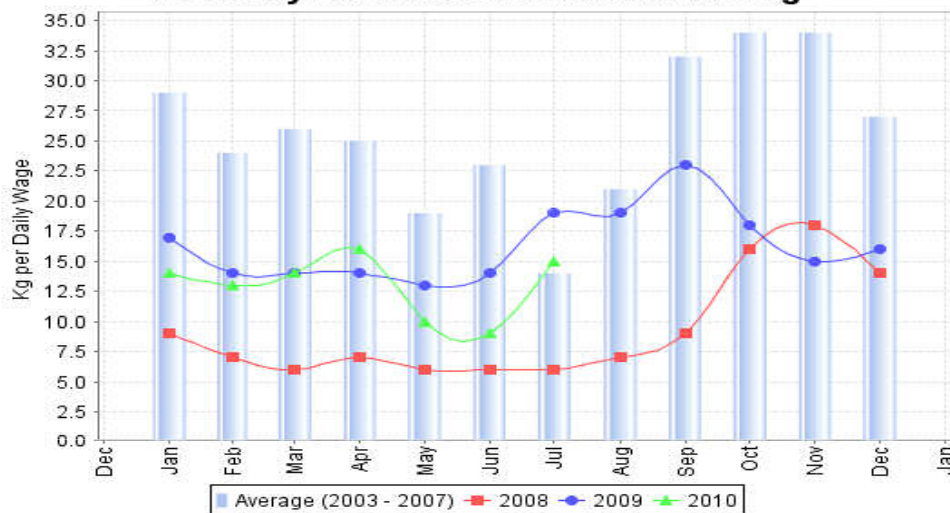
Regional Trend:

Daily Labour Rate in Lower Juba(Jammame)

Agriculture

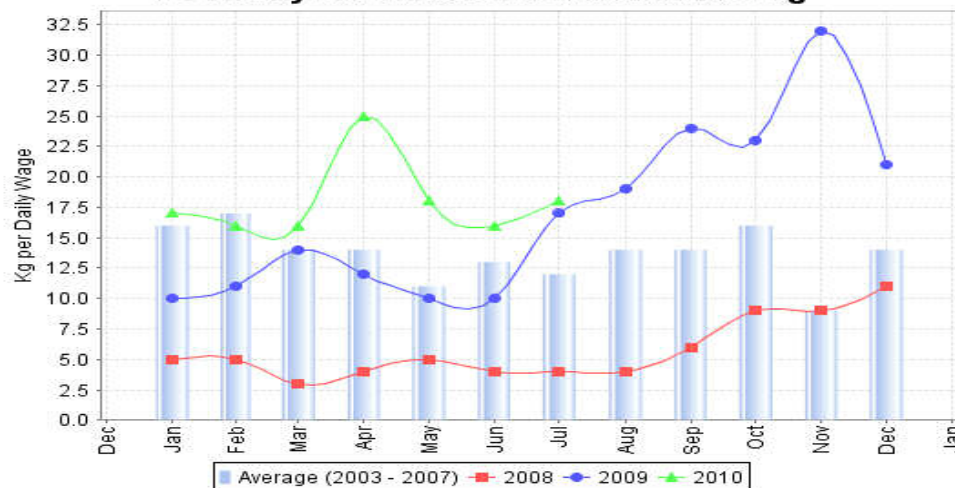
Regional Trends in Terms of Trade in Juba Regions

TOT Daily Labor Rate To White Maize 1kg



**Regional Trend in
Purchasing Power
(daily labor/maize),
Middle Juba (Buale & Jilib)**

TOT Daily Labor Rate To White Maize 1kg

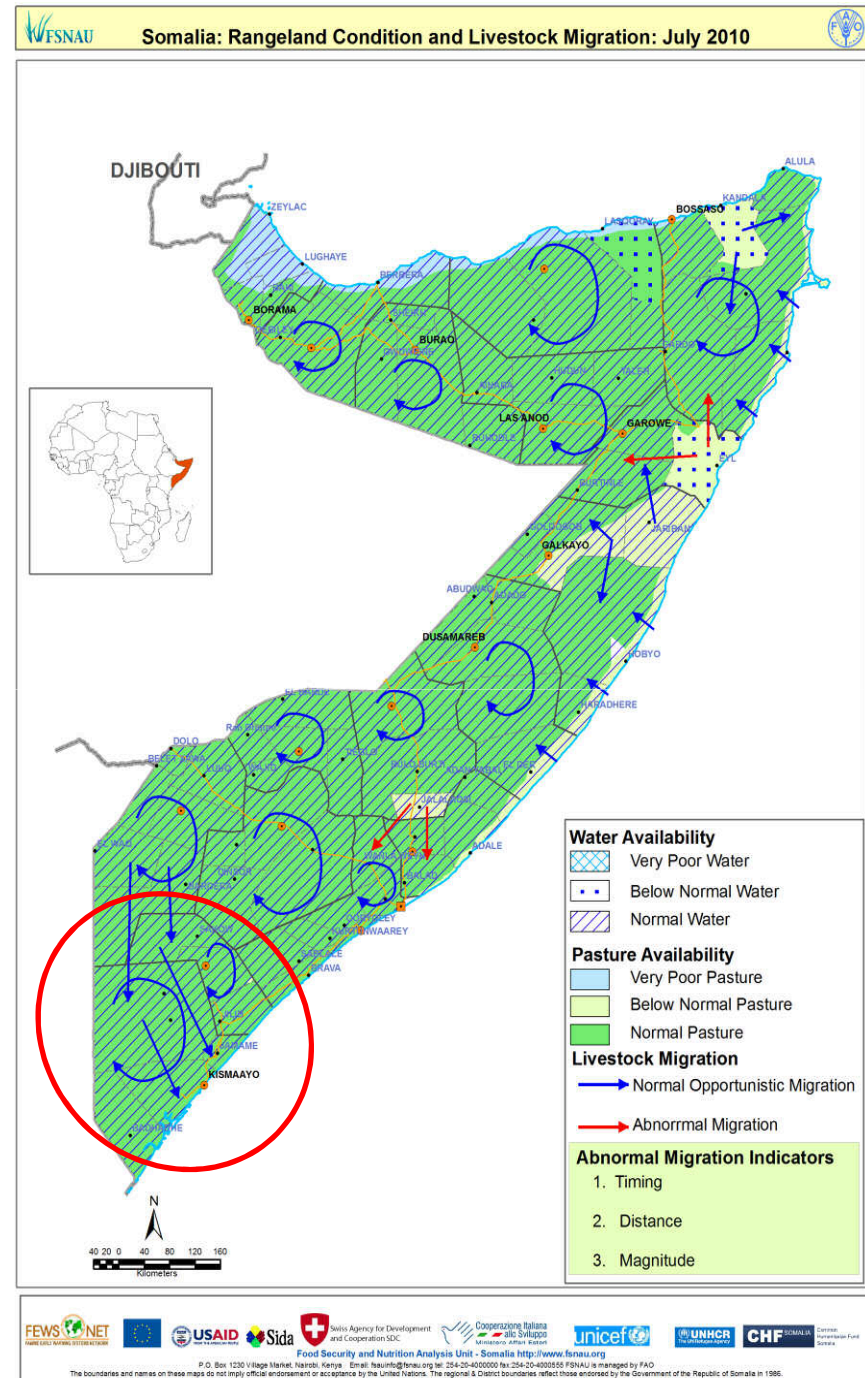


**Regional Trend in
Purchasing Power
(daily labor/maize),
Lower Juba (Jammame)**

Livestock

Rangeland Conditions and Livestock Migration, June '10

- Average to good pasture condition in parts of the region, with below average conditions in northwestern part of Sakow/Salagle and in Jira plain of Afmadow.
- Good water availability
- Good livestock body condition





Livestock

Trends in Livestock Holdings and Milk Production

Region	Conception (Gu '10)	Calving/ kidding (Gu '10)	Milk production (Gu '10)	Expected calving/ kidding Jul-Dec '10	Trends in Herd Size (Jul-Dec '10)	
					Livelihoods	Livestock species
Juba	Camel: Medium to High Cattle: Medium Sheep/Goat s: High to Medium	Camel: Medium Cattle: Medium Sheep/Goats: High to Medium	Average for all species	Camel: Medium to Low Cattle: Medium Sheep/Goats: High to Medium	Southeast Pastoral	Cattle: Increased (Near Baseline) Sheep/goats: Increased (as Baseline)
					Southern Inland Pastoral	Camel: Increase (Above Baseline) Cattle: Increased (Near Baseline) Sheep/goats: Increase (Near Baseline)
					Juba Agro- pastoral	Cattle: increased (Near Baseline) Sheep/goats: Increase (Near Baseline)

Livestock

Gu' 10 Assessment Photos



Good Cattle Body Condition. Bula-Gadud, Kismayo, Lower Juba, July '10



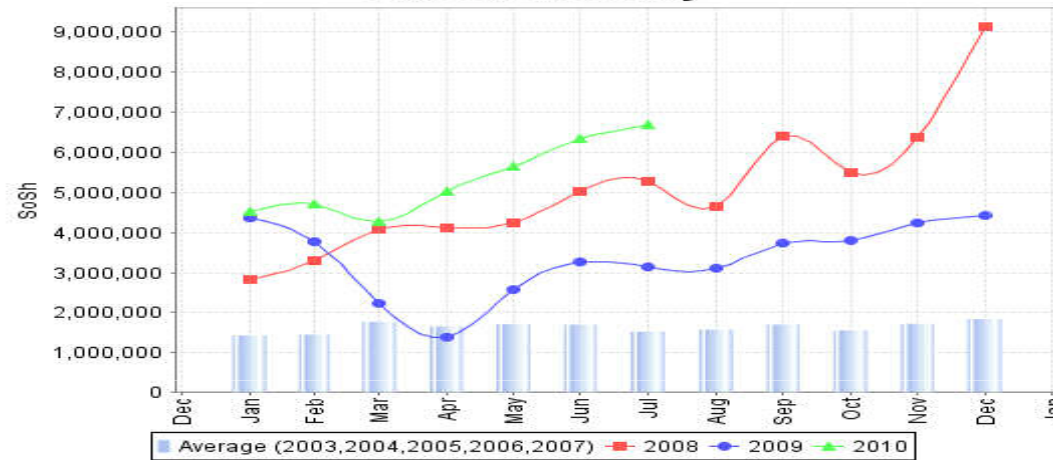
Good Sheep & Goats Body Condition. Kismayo, Lower Juba, July '10



Livestock

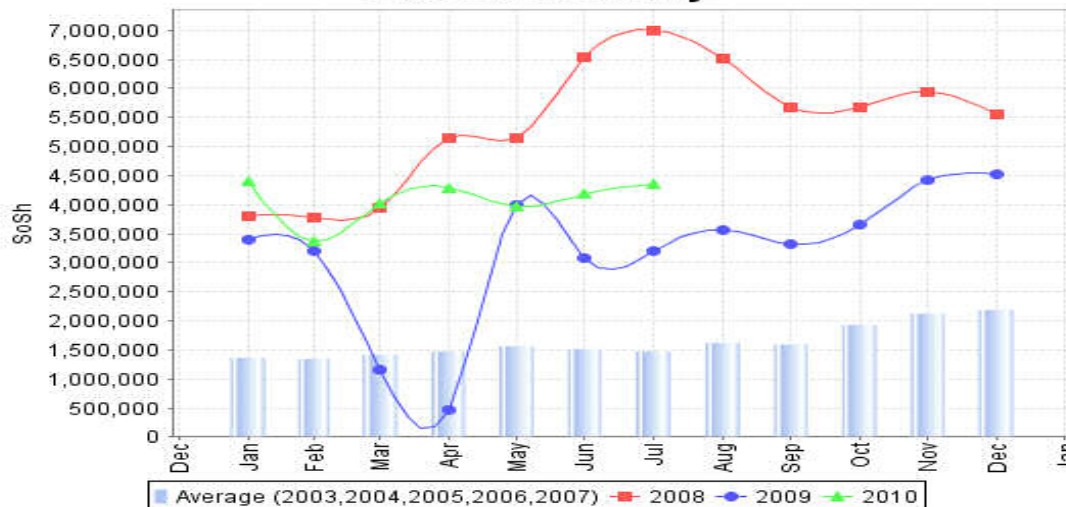
Regional Trends in Livestock Prices in Juba regions

Cattle Local Quality



Regional Trend in Cattle Prices in Middle Juba (Jilib & Buale)

Cattle Local Quality



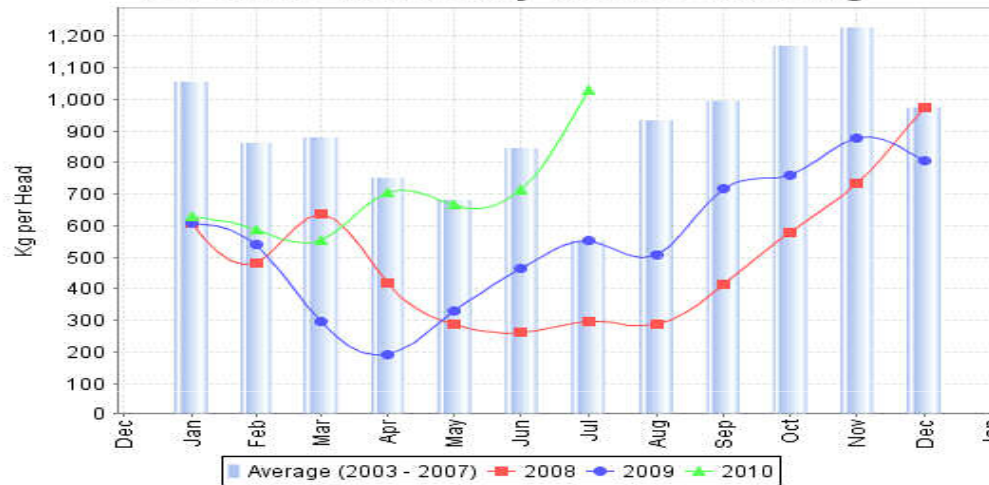
Regional Trend in Cattle Prices in Lower Juba (Afmadow & Kismayo)



Livestock

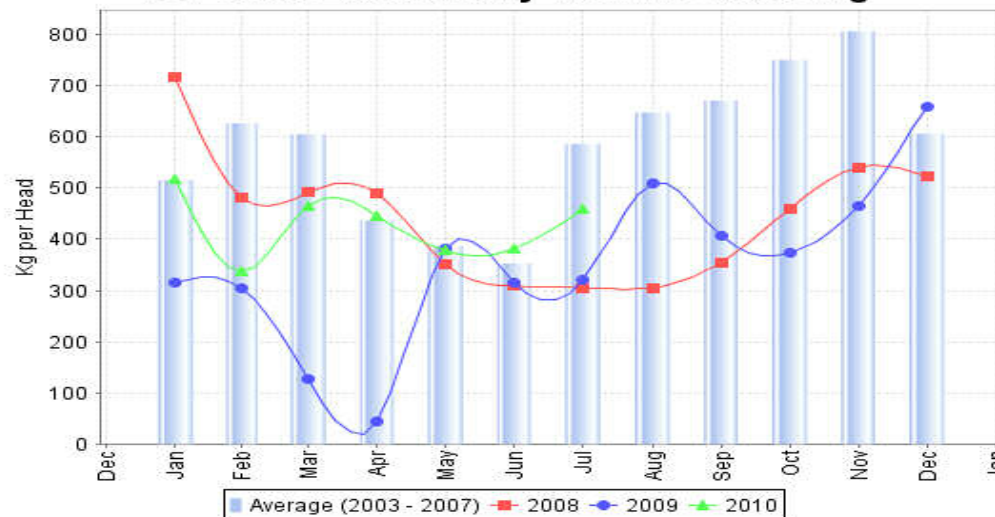
Regional Trends in Terms of Trade Between Cattle/Maize in Juba regions

TOT Cattle Local Quality To White Maize 1kg



**Regional Trend in
TOT between
Cattle/Maize
in Middle Juba (Jilib
& Buale).**

TOT Cattle Local Quality To White Maize 1kg



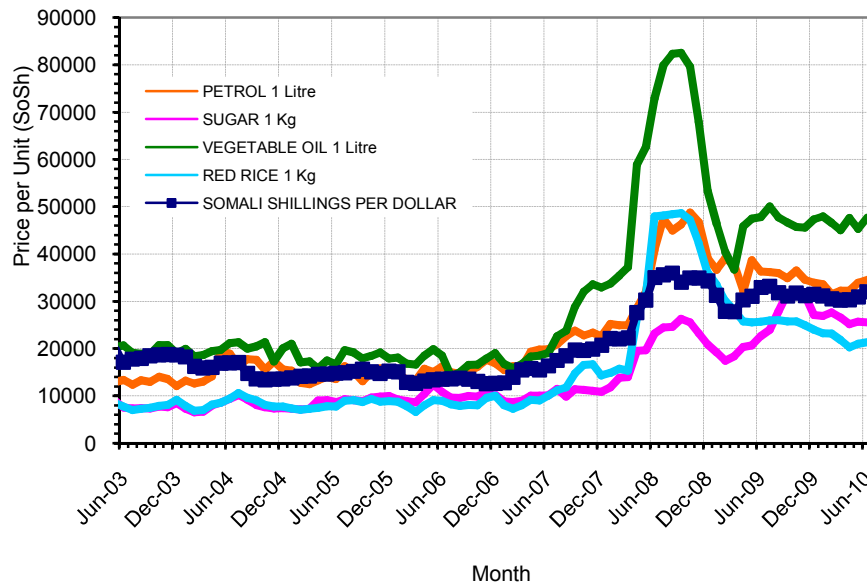
**Regional Trend in
TOT between
Cattle/Maize
in Lower Juba
(Afmadow &
Kismayo)**



Markets

Trends in Imported Commodity Prices

Juba Valley: Trend in Imported Commodity Prices compared to Exchange Rate



Factors Influencing Commercial Import Price Declines (last six months)

- Declining global prices
- Increased commercial imports due to smooth operation of Kismayo port
- Good local cereal production
- Remoteness of pastoral areas (Afmadow and Doble) from the main markets
- Relatively stable SoSh

Nutrition

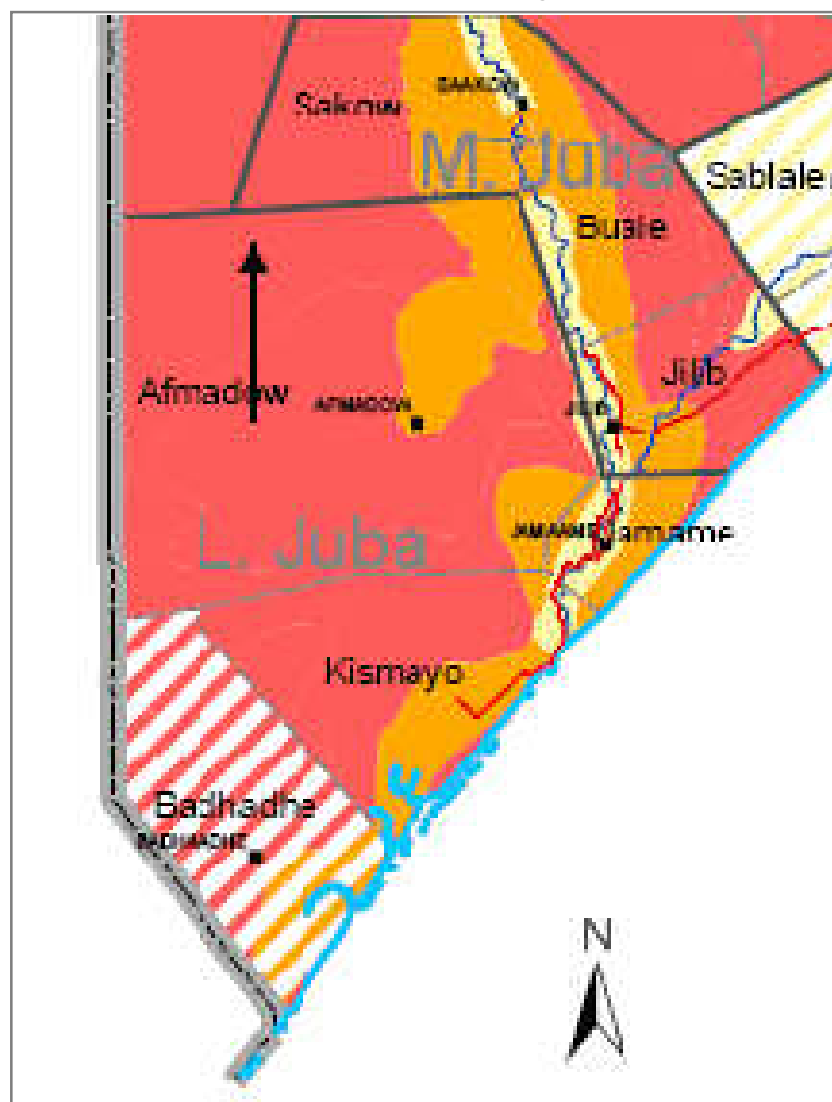
Summary of Nutrition Findings (M. and L. Juba)

Region	Nutrition Surveys (March – July 10)	Rapid MUAC Screening (% <12.5cm & <11.5 cm)	Health Information System Info	TFC/OTP/ SFC	Other relevant information – Key driving factors	Summary of analysis and change from Deyr '09/10
M/L Juba	NA	<p><u>Juba pastoral-N=1125</u></p> <p>MUAC<12.5cm or oedema= 9%. R=2</p> <p>MUAC<11.5cm or oedema= 2%. R=2</p> <p><u>Juba agro-pastoral-N=1167</u></p> <p>MUAC<12.5cm or oedema= 10.6%. R=2</p> <p>MUAC<11.5cm or oedema= 2.5%. R=2</p> <p><u>Juba Riverine-N=1312</u></p> <p>MUAC<12.5cm or oedema= 18.5%. R=2</p> <p>MUAC<11.5cm or oedema= 5.5% . R=2</p> <p><u>Kismayo IDP -N=1125</u></p> <p>MUAC<12.5cm or oedema= 15.5%. R=2</p> <p>MUAC<11.5cm or oedema= 3.2%. R=2</p>	<p>HIS data show mixed trend in the number of acutely malnourished children reported in facilities -High and fluctuating in the riverine, high and stable in the agropastoral and low and decreasing trends in the pastoral livelihoods</p> <p>(Source: WVI, SRCS , Muslim Aid, MSF, HIS Data , Jan-June'10 R=3)</p>	<p>OTP admission show mixed trends, in the number of severely malnourished children admitted in OTP –with low and stable trends in pastoral, high and stable number in agro-pastoral and high and increasing in the riverine livelihood 's facilities</p> <p>(Source: WVI, SRCS , Muslim Aid, MSF, HIS Data , Jan-June'10 R=3)</p>	<p>Aggravating factors</p> <ul style="list-style-type: none"> -High morbidity – suspected measles reported -827 cases of AWD reported in June'10 in the two regions -Limited access to food due to flood & insecurity in riverine, -Limited/disrupted humanitarian assistance -Poor child feeding -Poor access to safe water and sanitation facilities -Weakened Kismayo IDP-riverine social support <p>Mitigating factors</p> <ul style="list-style-type: none"> -Increased milk access -Fishing opportunity in flooded areas -Increased consumption of green crops- maize -Increased opportunities for income to diversify food sources/types 	<p><u>Juba Pastoral –</u> Likely Serious- improved from <i>Very Critical</i> in Deyr'09/10 and expected to continue improving</p> <p><u>Juba Agro-pastoral</u> Likely Critical – No change from Deyr'09/10.</p> <p><u>Juba Riverine:</u> Likely Very Critical – Deteriorated from <i>Serious</i> levels in Deyr'09/10 due to impact of flood on food access, limited humanitarian space and continued high disease burden</p>

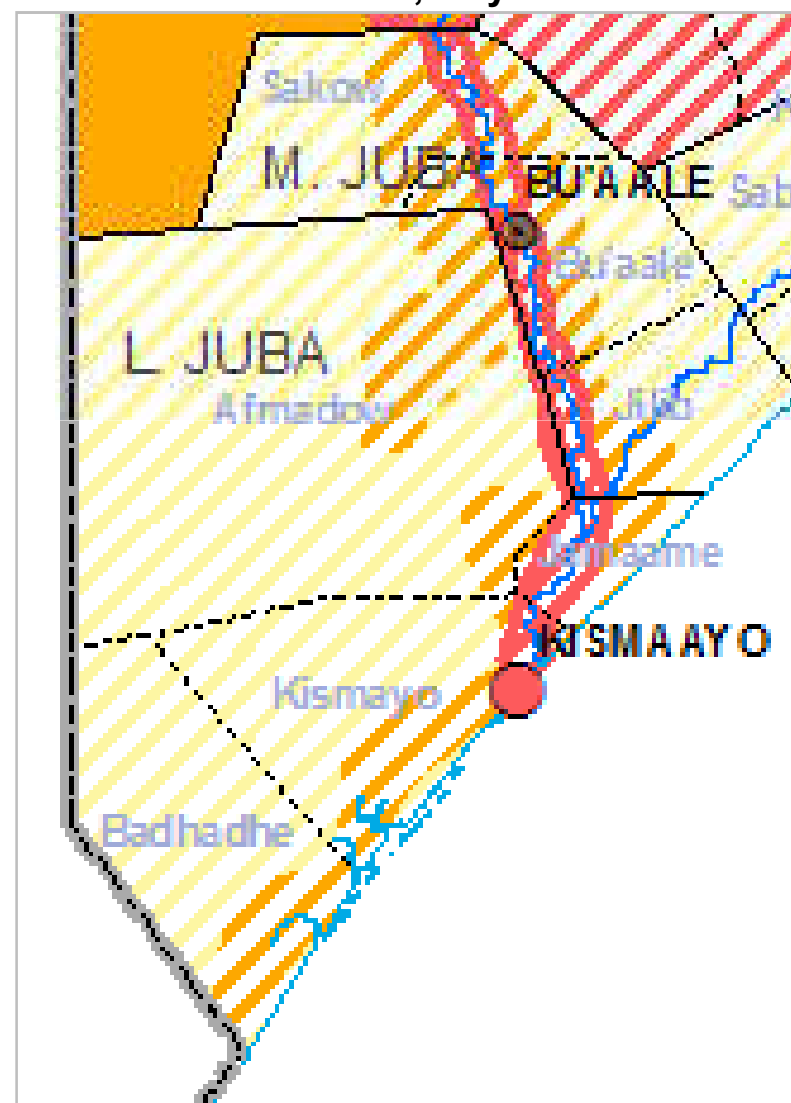
Nutrition

Nutrition Situation Estimates (Juba regions)

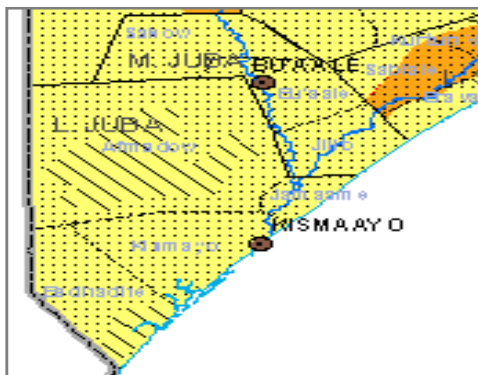
**Juba Regions Nutrition Situation
Estimates, January 2010**



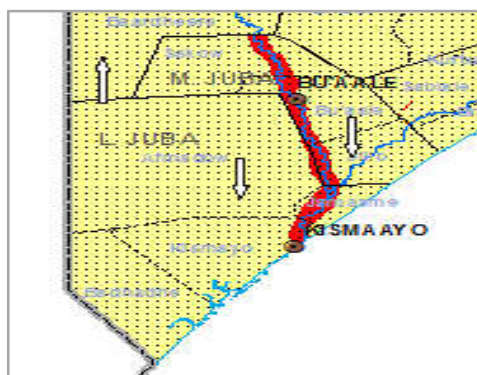
**Juba Regions Nutrition Situation
Estimates, July 2010**



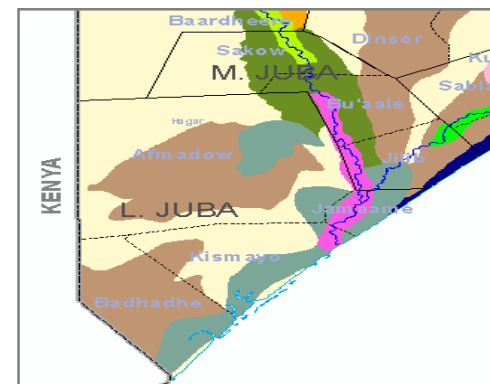
MAP 1: IPC Deyr 2009/10



MAP 2: IPC Gu 2010



MAP 3: LIVELIHOOD ZONES



Key IPC Reference Outcomes: Riverine – HE: 100%P (All districts); AFLC: 25% M in Jammame and Jilib; 50%M in Sakow

- **Acute malnutrition:** Critical to Very Critical
- **Food Access:** Access of food and availability are average except Juba Riverine
- **Water Access:** Average access to water but of poor quality
- **Destitution/Displacement:** diffuse
- **Coping:** Distress coping strategies
- **Livelihood Assets:** Good production in Agropastoral areas and livestock recovery in terms of body condition and livestock reproduction and holdings
- **Main Causes:**
 - ☐ Consecutive seasons of average rainfall
 - ☐ Normal crop productions in Agropastoral areas
 - ☐ Average livestock production and reproduction due to abundant pasture and water
 - ☐ South-East Pastoral: Improved milk production, good livestock prices and relatively high ToT between cereals and local quality goats
 - ☐ Juba Riverine: Flood damage to the standing crop and high cost of crop production



IPC

Estimated Rural Population in AFLC & HE by Districts

Affected Regions and District		UNDP 2005 Rural Population	Assessed and High Risk Population in AFLC and HE			
			Deyr 2009-10		Gu 10	
			Acute Food and Livelihood Crisis (AFLC)	Humanitarian Emergency (HE)	Acute Food and Livelihood Crisis (AFLC)	Humanitarian Emergency (HE)
Middle Juba	Bu'aale	45,901	0	0	0	7,000
	Jilib	83,464	0	0	5,000	11,000
	Saakow/Salagle	54,773	0	0	4,000	6,000
	Rural Sub-total	184,138	0	0	9,000	24,000
	Urban	54,739	7,000	0	7,000	19,000
	Regional Total	238,877	7,000	0	16,000	43,000
Lower Juba	Afmadow/Xagar	44,212	0	0	0	0
	Badhaadhe	32,828	0	0	0	0
	Jamaame	106,734	0	0	6,000	14,000
	Kismaayo	77,334	0	0	0	0
	Rural Sub-total	261,108	0	0	6,000	14,000
	Urban	124,682	12,000	0	4,000	10,000
	Regional Total	385,790	12,000	0	10,000	24,000
GRAND TOTAL		624,667	19,000	0	26,000	67,000
TOTAL AFFECTED POPULATION IN AFLC & HE			19,000		93,000	



IPC

Estimated Rural Population in AFLC & HE by Livelihood Zones

Affected Regions and Livelihood Zone		Estimated Population of Affected Livelihood Zones	Assessed and High Risk Population in AFLC and HE			
			Deyr 2009-10		Gu 10	
			Acute Food and Livelihood Crisis (AFLC)	Humanitarian Emergency (HE)	Acute Food and Livelihood Crisis (AFLC)	Humanitarian Emergency (HE)
Middle Juba	Coastal pastoral: goats & cattle	10,984	0	0	0	0
	Juba Pump Irrigated Riv	17,297	0	0	4,000	6,000
	Lower Juba Agro-Past	8,780	0	0	0	0
	South-East Pastoral	18,232	0	0	0	0
	Southern Agro-Past	46,816	0	0	0	0
	Southern Inland Past	22,725	0	0	0	0
	Southern Juba Riv	59,304	0	0	5,000	18,000
	Rural Sub-total	184,138	0	0	9,000	24,000
	Urban	54,739	7,000	0	7,000	19,000
	Regional Total	238,877	7,000	0	16,000	43,000
Lower Juba	Coastal pastoral: goats & cattle	33,354	0	0	0	0
	Lower Juba Agro-Past	70,183	0	0	0	0
	South-East Pastoral	38,810	0	0	0	0
	Southern Agro-Past	11,637	0	0	0	0
	Southern Inland Past	50,119	0	0	0	0
	Southern Juba Riv	57,005	0	0	6,000	14,000
	Rural Sub-total	261,108	0	0	6,000	14,000
	Urban	124,682	12,000	0	4,000	10,000
	Regional Total	385,790	12,000	0	10,000	24,000
GRAND TOTAL		624,667	19,000	0	26,000	67,000
TOTAL AFFECTED POPULATION IN AFLC & HE			19,000		93,000	

The End