



Post Gu 2012

Presentation

22 August 2012

Gedo Region

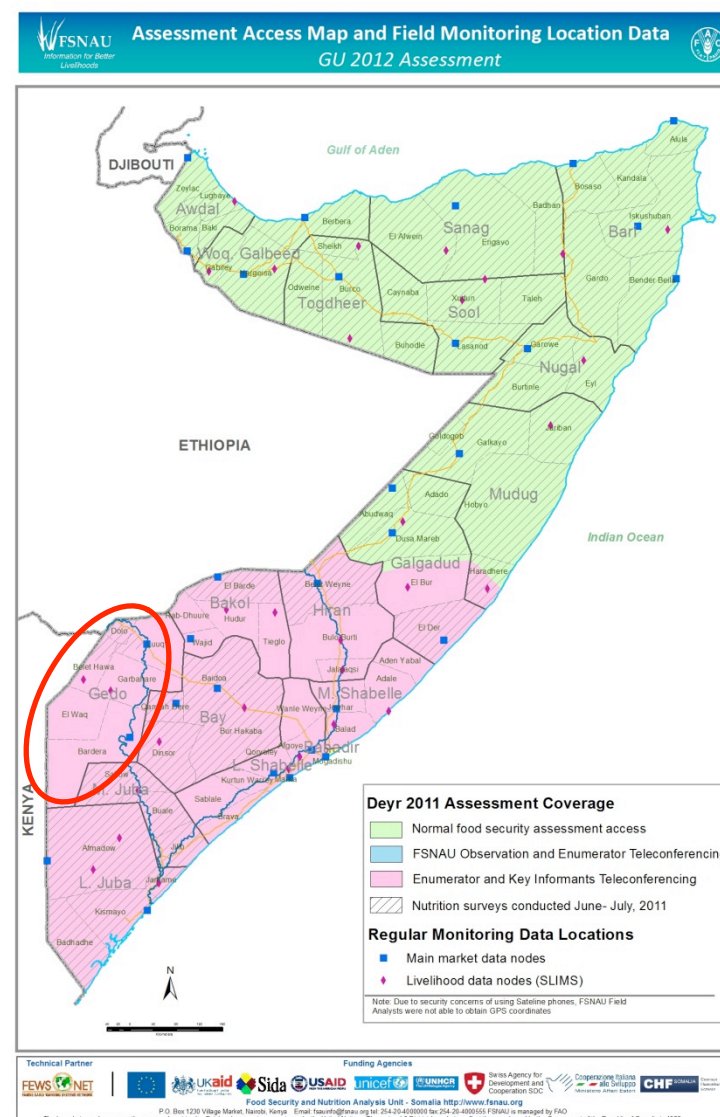
Technical
Partner



Donors

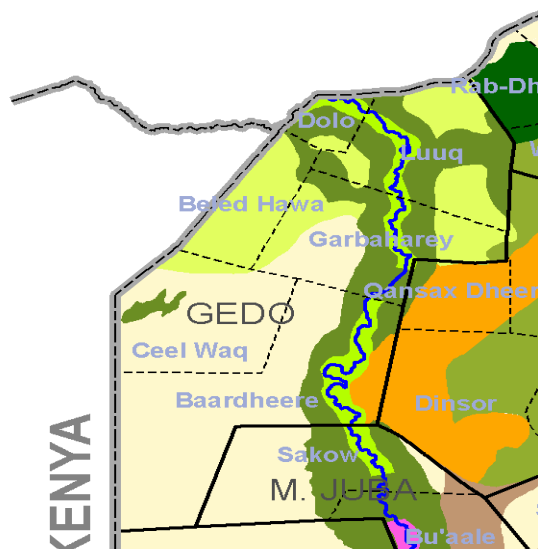
Field Access and Field Data Locations

- Due to general insecurity in the region and the recent ban imposed on key humanitarian agencies by the insurgents, direct field access was not possible.
- Food security data was collected through teleconferencing with FSNAU enumerators and key informants.



Main Livelihood Groups

Sources of Food and Income



Livelihood Groups & Main Sources of Food and Income

- **2 Pastoral Livelihoods (Southern Inland and Dawa Pastoralists)**
 - ☐ Primary sources of income of poor: sale of livestock & livestock products
 - ☐ Primary sources of food of poor: purchase and own production
 - ☐ Primary livelihood assets of poor: camel, cattle and sheep/goat
- **2 Agropastoral Livelihoods (Southern agropastoral and Bay agropastoral high potential)**
 - ☐ Southern agro-pastoral are more pastoral than agriculturalists. Main sources of income: sale of livestock & livestock products, self-employment (fodder and bush products sales); main sources of food: purchase and own production
 - ☐ Gedo agro pastoral High potential are more agriculturalists than pastoralists. Main sources of income: sale of crops, livestock products and labour; main sources of food: own crop production and purchases.
- **Riverine Livelihood (Juba riverine pump irrigation)** are agriculturalists. Main sources of income: sale of crops and labour; main sources of food: purchase and own crop production.

CLIMATE

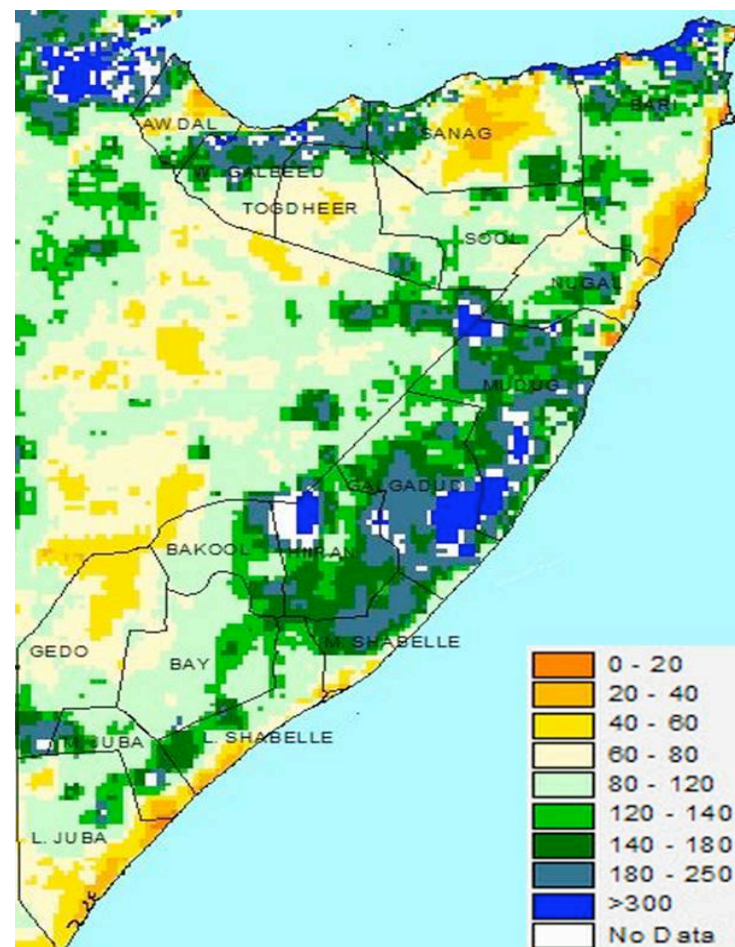
Performance of the *Gu*' 2012 Rainfall

Gu 2012 RFE Percent from Normal Long-Term Mean (Apr- Jun'12)

Overall Statement:

Overall *Gu* season rainfall performance has been below average in terms of amount, frequency, and coverage in most livelihoods of Gedo

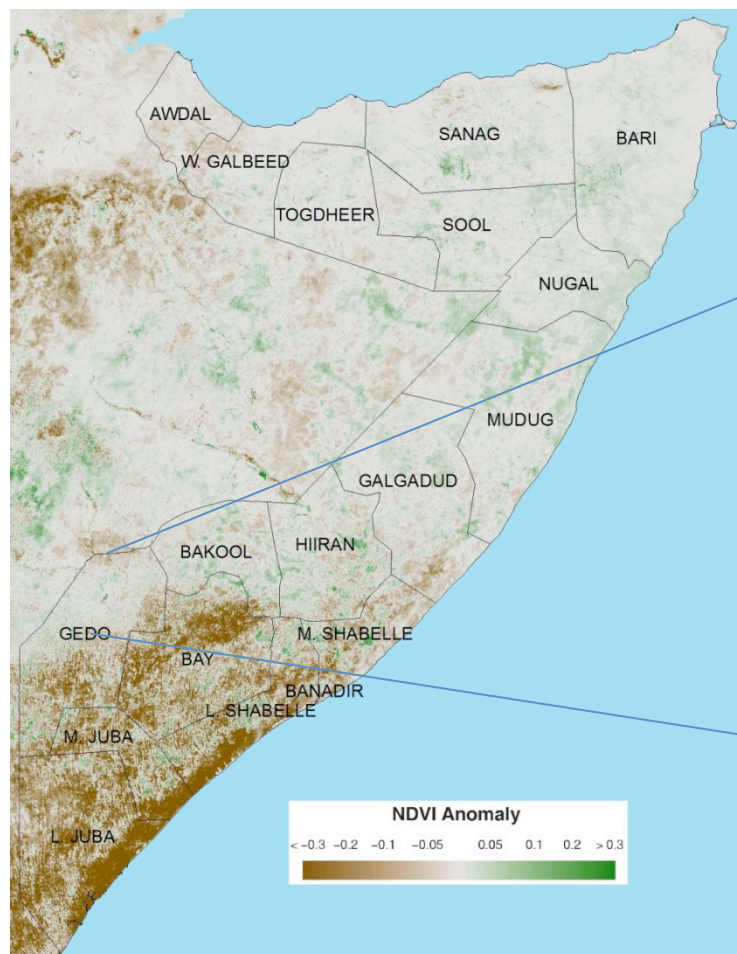
- In most parts rains started late and ended up early
- In most parts of Gedo rains were 60-80% of long term mean



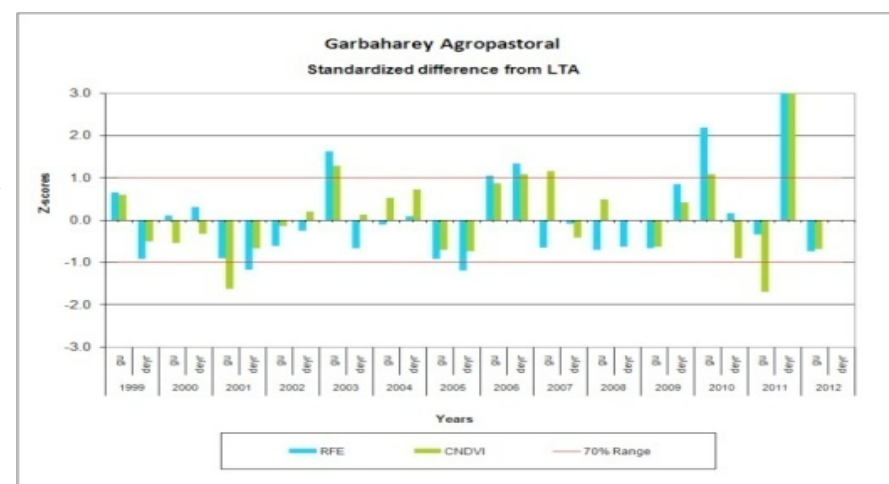
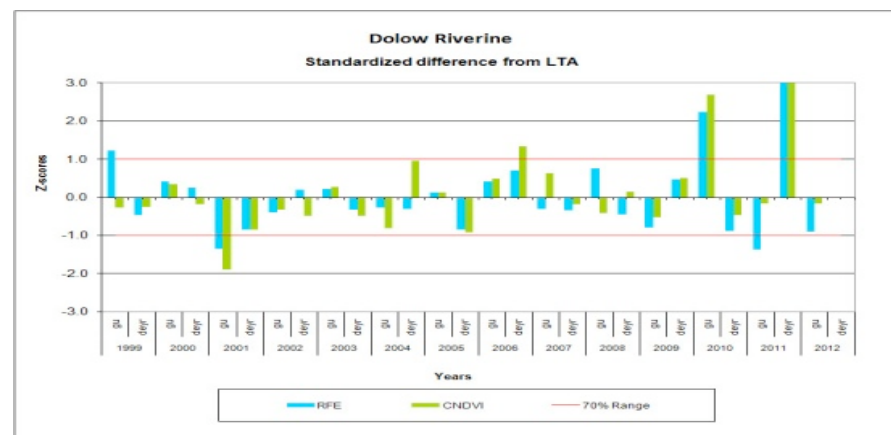
Source: NOAA/CPC/FEWS NET

NDVI LTM Trend Analysis by District/ Landcover

NDVI eMODIS Anomaly Period 36, June 21-30, 2012



Source: NOAA/CPC/FEWS NET

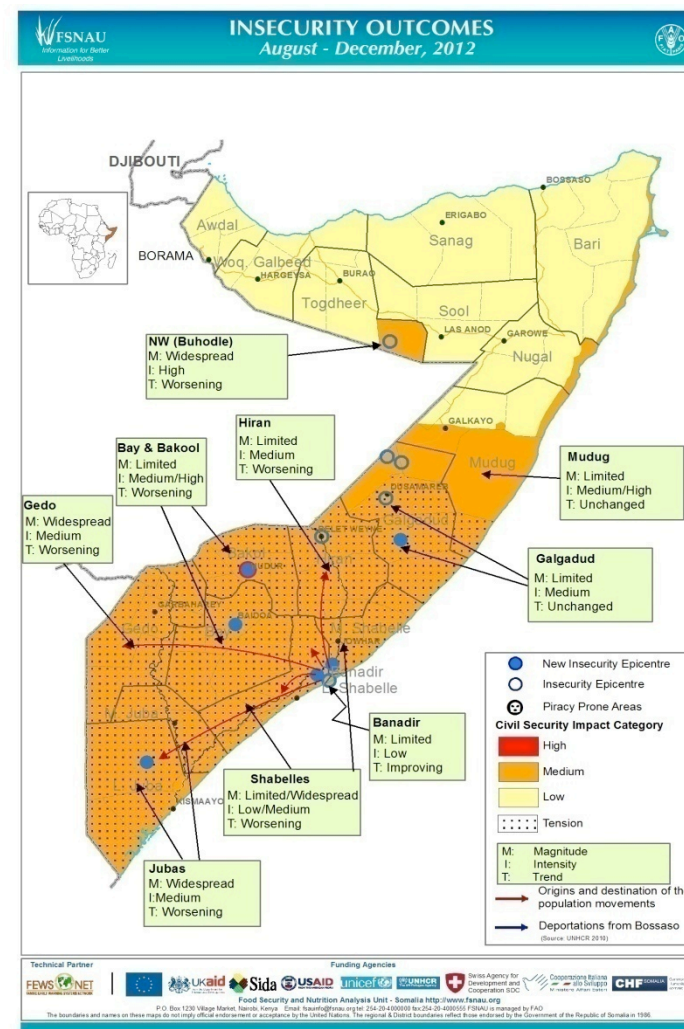


Civil Security Situation:

- Confrontations between TFG and opposing groups is increasing and likely to result in further clashes
- Situation is likely to remain tense

Direct and Indirect Impacts on Food Security and Nutrition:

- Human casualties
- Population displacement to the nearest safe places
- Trade disruptions

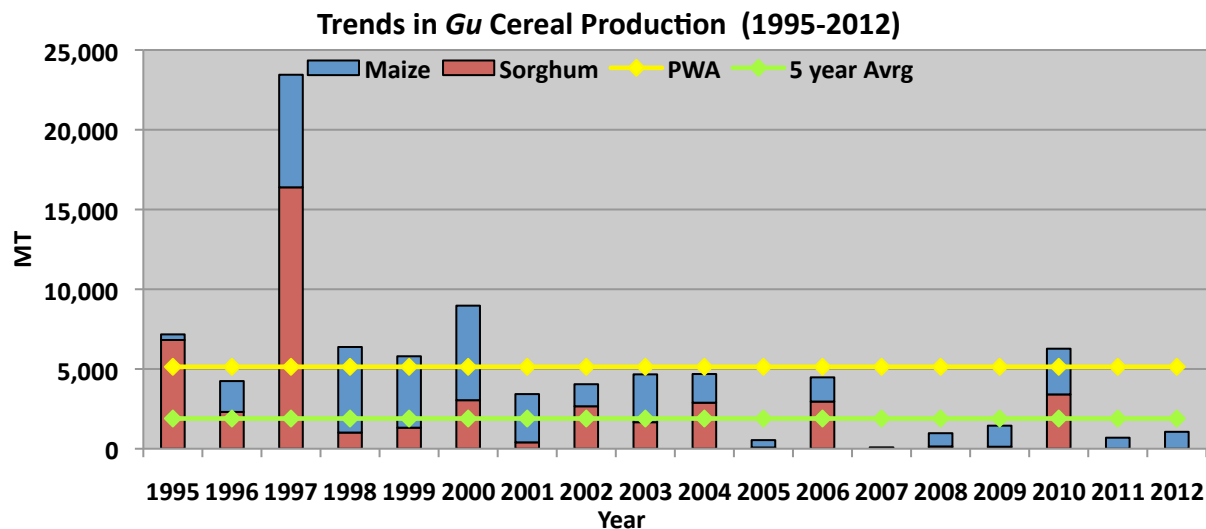


AGRICULTURE

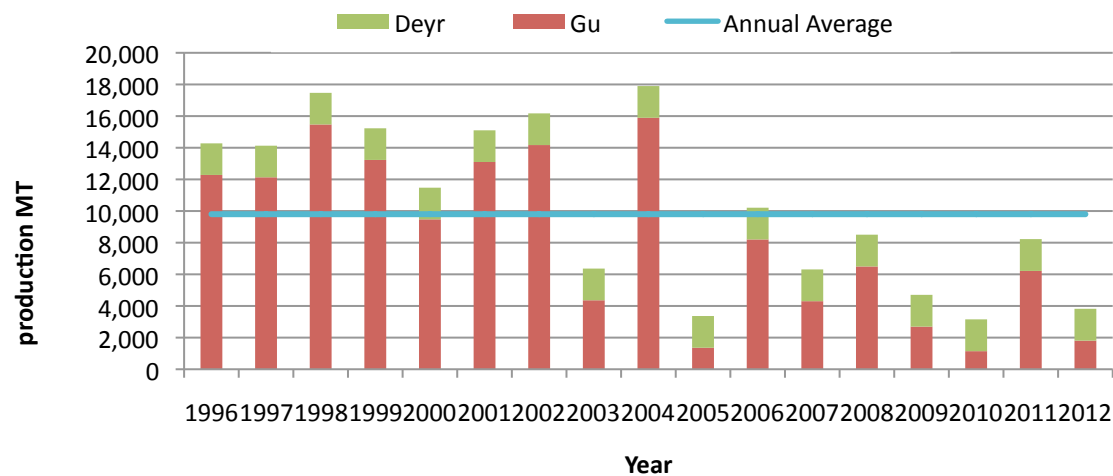
Gu 2012 Crop Production Estimates

Districts	Gu 2012 Production in MT		Total Cereal	Gu 2012 as % of Gu 2011	Gu 2012 as % of Gu PWA (1995-2011)	Gu 2012 as % of 5 year average (2007-2011)
	Maize	Sorghum				
Baardheere	601	0	601	150%	15%	43%
Belet Xaawo	0	0	0	0%	0%	0%
Ceel Waaq	0	0	0	0%	0%	0%
Dolow	103	0	103	0%	0%	0%
Garbahaarey/Buur Dhuubo	226	0	226	191%	65%	121%
Luuq	132	0	132	171%	39%	74%
Gedo Gu 2012 Total	1,062	0	1,062	153%	21%	56%

Trends in Regional *Gu* 2012 Cereal Production Trends



***Gu*' 12 Cereal
Production Trends
(1995 – 2012)**



**Annual Cereal
Production Trends
(1996 – 2012)**

Gu 2012 Other Crop's Production Estimates

Districts	Livelihood Zone	Cowpea	Sesame	Onion
		Production (Mt)	Production (Mt)	Production (Mt)
Bardere	Riverine	3	0	210
Garbaharey	Riverine	6	0	112
Luuq	Riverine	10	0	140
Beled haawo	Riverine	2	0	2
Dolow	Riverine	5	0	70
Total Region (Riverine)		26	0	534

AGRICULTURE

Gu 2012 Assessment Photos



Good Banana Crop. Bardera, Gedo July 2012



Sorghum Crop failure. Bardeera Gedo, July 2012



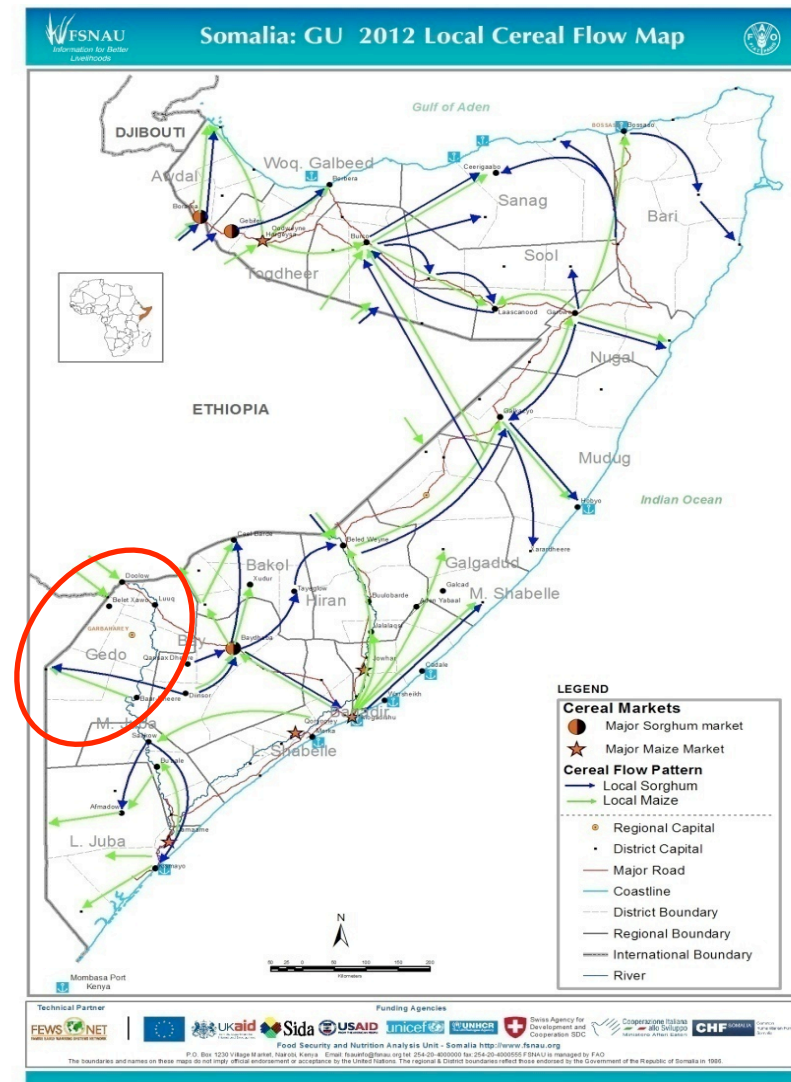
Good Tomato Crop. Luuq ,Gedo, July-2012



Sorghum Crop failure. Luuq, Gedo, July 2012

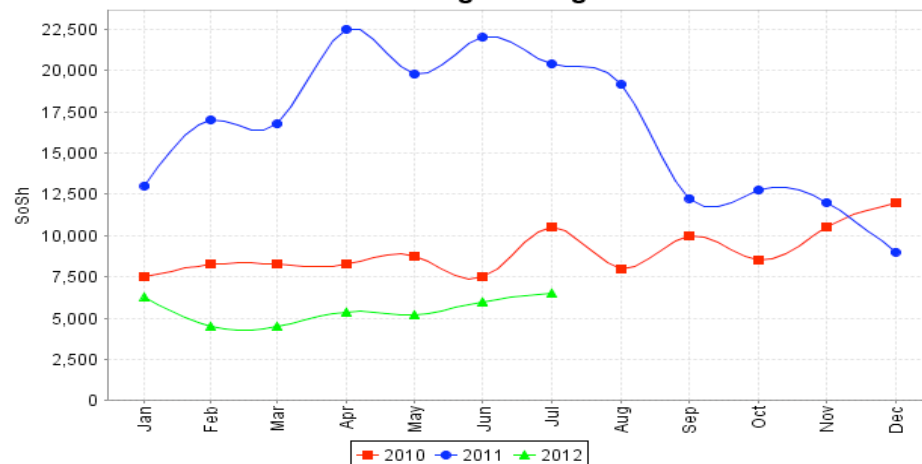
Gu 2012 Cereal Flow:

- Major sorghum supply to Gedo comes from Bay
- Some supplies of maize and sorghum through cross-border trade from Ethiopia to Gedo
- Supply of imported cereals usually comes from Mogadishu



Regional Trends in Cereal Prices

Red Sorghum 1kg



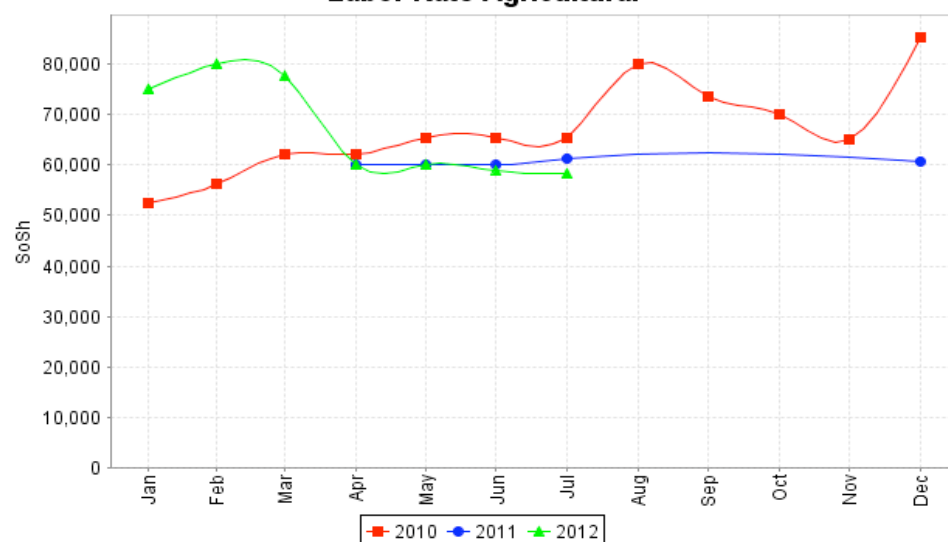
Regional Trend in Cereal Prices (Red Sorghum)

Jun'11-Jun '12 : Decrease (61%)

Jan-Jun'12: Decrease (9%)

Jun-Jul '12: Increasing (6%)

Labor Rate Agricultural

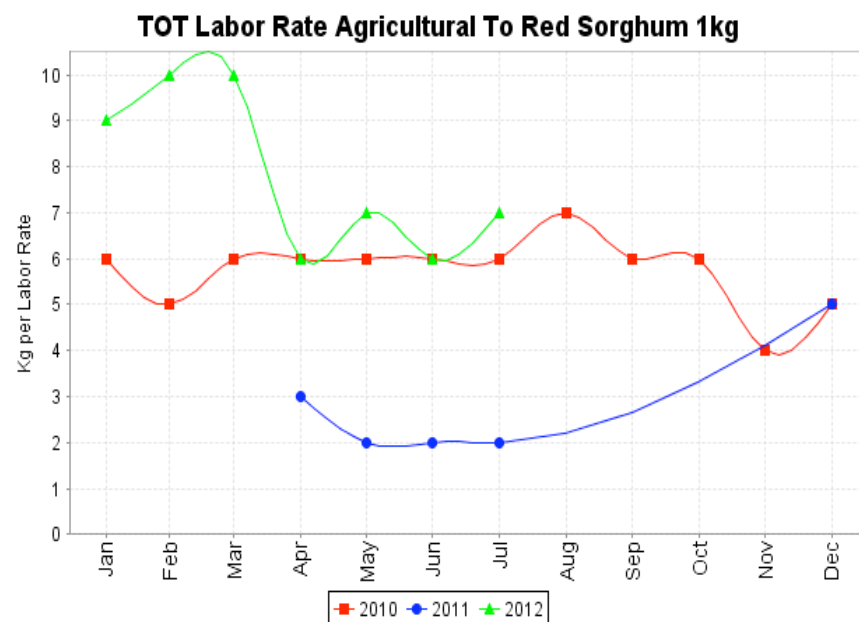


Regional Trends in Daily Labour Wages

Jun'11-Jun'12: Decrease (2%)

Jan-Jun'12: Decrease (22%)

Jun-Jul '12: Stable



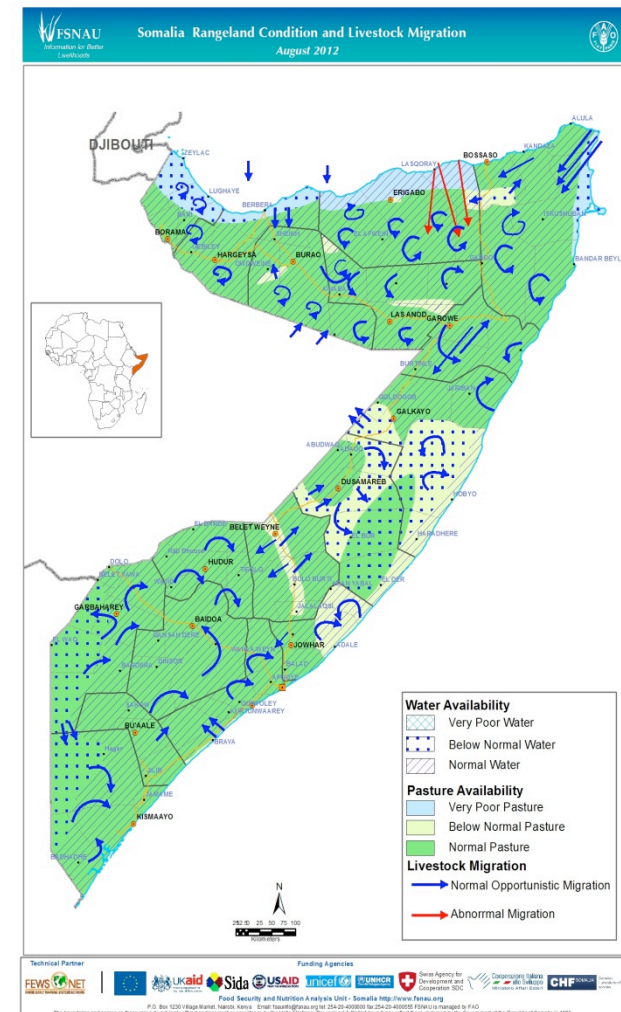
Regional Trends in Terms of Trade: Labour to Red Sorghum

Jun '11 – Jun '12: Increase (200%)

Jan -Jun'12: Decrease (33%)

Jun-Jul '12: Increase (17%)

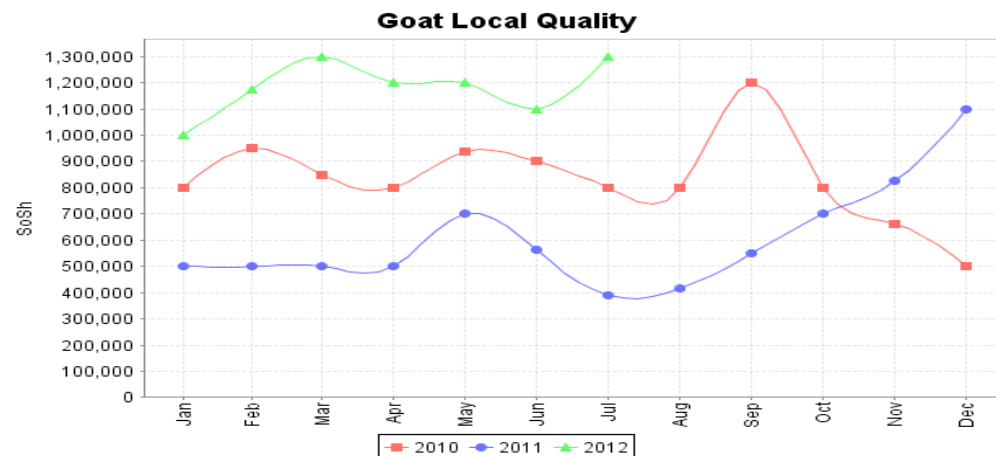
- **Pasture:** As a result of excellent *Deyr* 2011/12 rains, average dry pasture is available in all livelihoods of the region
- **Water:** Adequate supply of water in most livelihoods of the region with the exception of Southern Inland Pastoral (poor water)
- **Livestock condition:** Livestock body condition is average for all species (PET score 3)
- **Migration:** Normal livestock migration within the region and neighboring region of Juba is reported.



LIVESTOCK

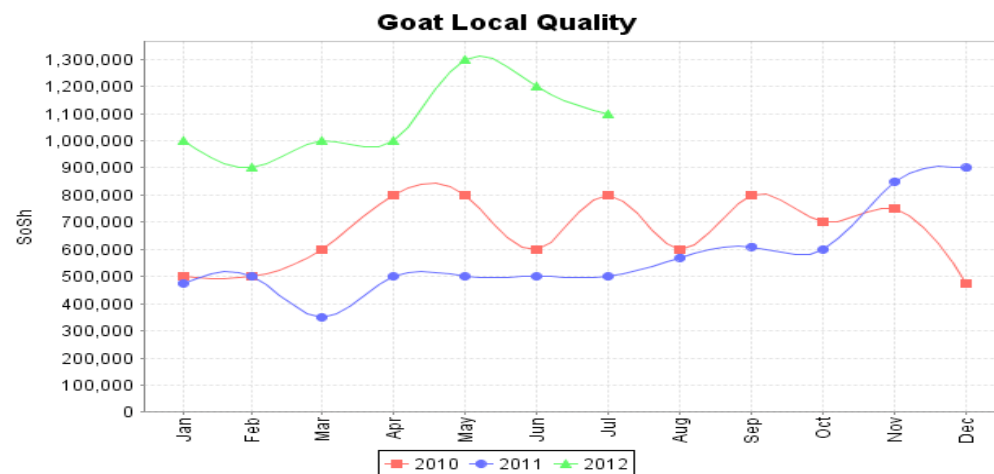
Trends in Livestock Holdings and Milk Production

Region	Livelihoods	Conception (Gu '12)	Calving/kidding (Gu '12)	Milk production (Gu '12)	Expected calving/ kidding Jul – Dec '12	Trends in Herd Size (Dec '12)
Gedo	Southern Inland Pastoral	Camel: Low Cattle: Low Sh/goat: Medium	Camel: Low Cattle: Low Sh/goat: Medium	low	Camel: High Cattle: High Sh/goat: Medium	Camel: Increasing trend (Below Baseline) Cattle: increasing trend (Below Baseline) Sh/goats: Unchanged (Below Baseline), likely to increase
	Dawo pastoral	Camel: Low Cattle: Low Sh/goat: Medium	Camel: Low Cattle: Low Sh/goat: Medium	low	Camel: high Cattle: High Sh/goat: Medium	Camel: Increasing trend (Below Baseline) Cattle: increasing trend (Below Baseline) Sh/goats: Increasing trend (Below Baseline)
	Southern Agropastoral	Cattle: Low Sh/goat: Medium	Cattle: Low Sh/goat: High	low	Cattle: High Sh/goat: Medium	Cattle: Increasing trend (No Baseline) Sh/goats: Increasing trend (No Baseline)



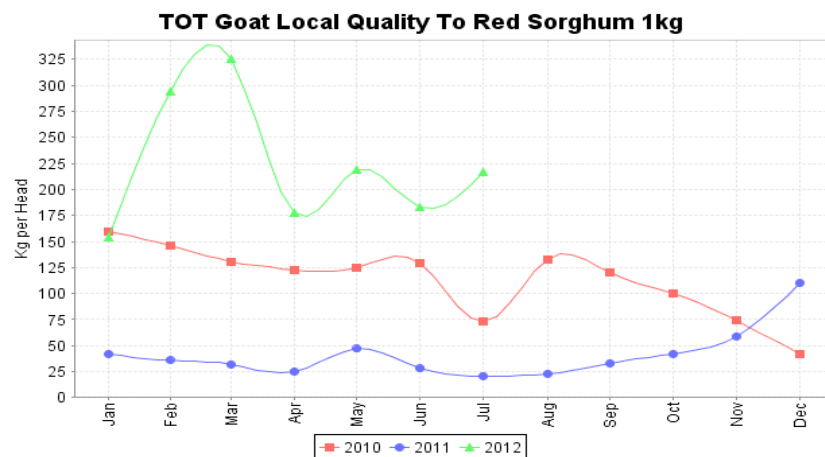
Regional Trends in Local Quality Goat Prices (Bardhere)

Jan-Jun '12: Increase (10%)



Regional Trends in Local Quality Goat Prices (Luuq)

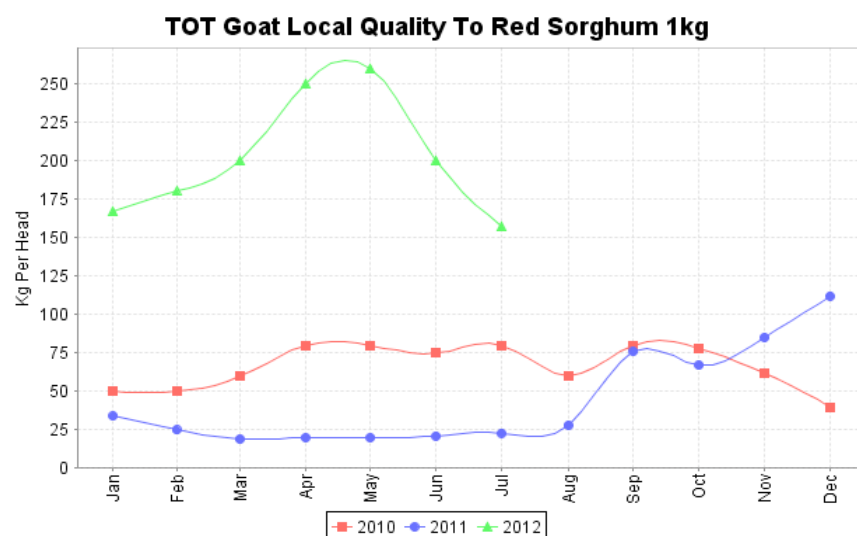
Jan -Jun '12: Increase(20%)



Terms of Trade: Cereal to Goat Local Quality (Bardera)

Jun 11- Jun'12: 28kg to 183kg/head;
increase (554%)

Jan-Jun'12: Increase (19%)



Terms of Trade: Cereal to Goat Local Quality, Lugh North

Jun'11- Jun '12: 21kg to 200kg/head; increase
(852%)

Jan-Jun'12: (167 to 200 Kg/head); increasing
(20%)

LIVESTOCK

Gu 2012 Assessment Photos



Average Goat Body Condition. Bardera, Gedo, FNSAU, July 2012



Cattle Average Body Condition. Ceelwaaq, Gedo, FNSAU, July 2012

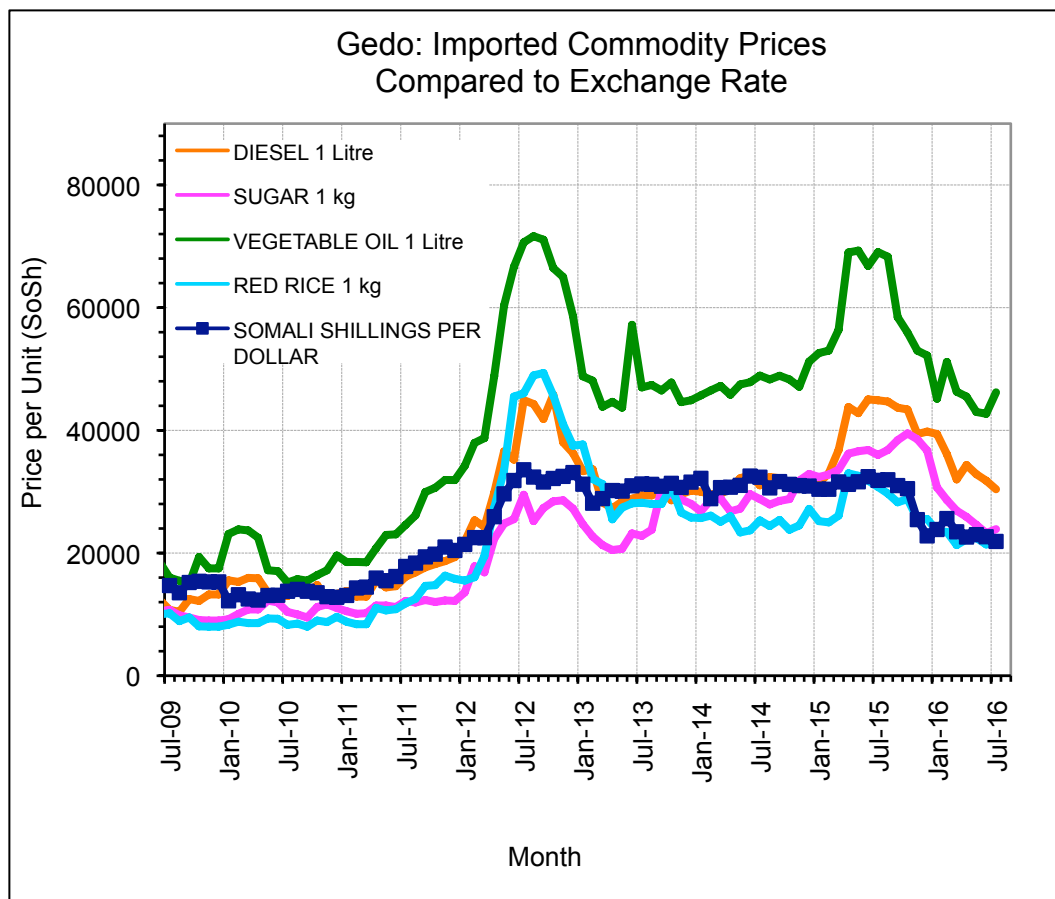


Average Camel Body Condition, Ceelwaaq, Gedo, FNSAU, July 2012



Average Water Availability, Ceel waaq, Gedo, FNSAU, July 2012.

Trends in Imported Commodity Prices



Significant decline in Import Commodity Prices.

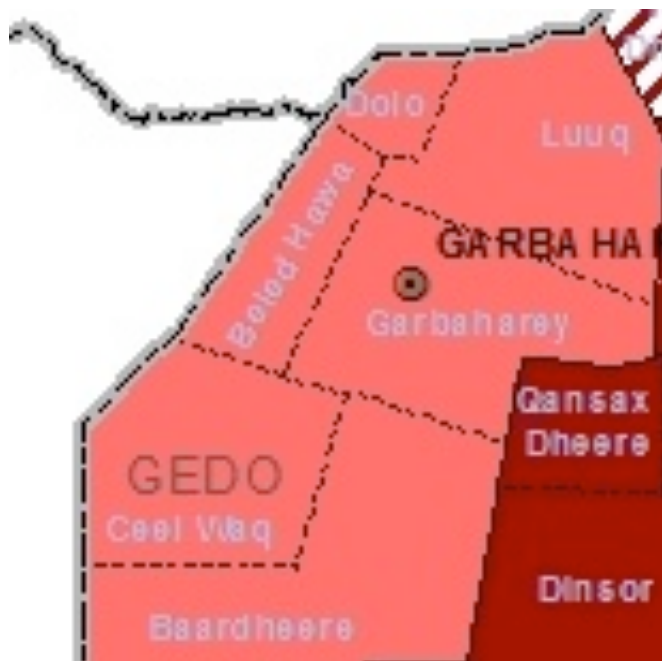
Factors Influencing Commercial Import Prices:

- Somali shilling appreciation.
- Improved imports from Mogadishu port
- Humanitarian relief operations

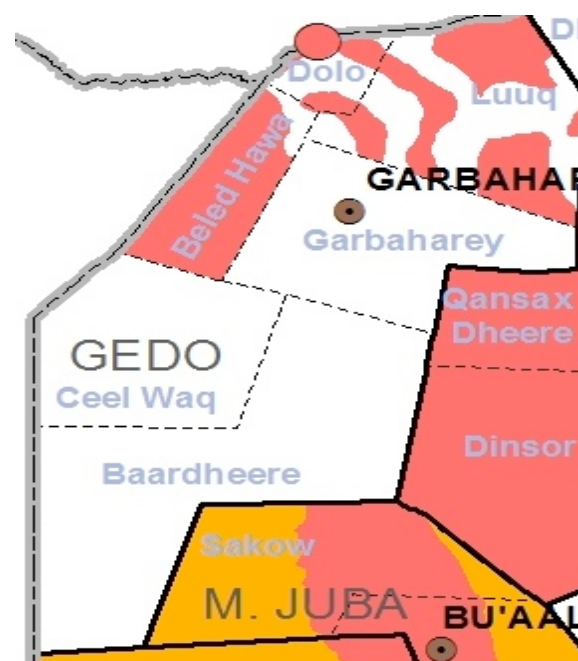
	Nutrition Surveys (May– July 2012)	MUAC Survey (% <12.5cm)	Health Information System Info	TFC/OTP/ SFC	Other relevant information – Key driving factors	Summary of analysis and change from Deyr 11/12
Gedo	<u>Gedo Dawo Pastoral</u> (N=694) GAM = 28.4 (23.0-34.5) SAM = 6.2 (4.4-8.7) Mean WHZ = -1.30 ±1.11 CDR = 0.44 (0.20-0.99) <5DR = 0.81 (0.29-2.27)	7.0 (5.1-9.4)	High (>20%) and decreasing trend of acutely malnourished children	High levels and decreasing admission trends	Morbidity: 29.2 (20.0-38.6) Suspected measles outbreak but controlled,	<u>Gedo Dawo Pastoral</u> Very Critical
	<u>Gedo North Riverine</u> (N=748) GAM = 22.5 (16.2-26.1) SAM = 6.1 (4.3-8.5) Mean WHZ = -1.16 ±1.11 CDR =0.21 (0.11-0.42) <5DR = 1.6 (0.57-2.32)	9.2(6.4-12.9)	High (>20%) and decreasing trend of acutely malnourished children	High levels and decreasing admission trends	Morbidity - 25.9 (17.1-34.6)	<u>Gedo North Riverine–</u> Very Critical
	<u>Dolow IDPS</u> (N=974) GAM = 25.9 SAM = 7.5 Mean: WHZ = -1.26 ±1.2 CDR = 0.60 <5DR = 0.81	13.8	High (>20%) and decreasing trend of acutely malnourished children	High levels and increasing admission trends	Morbidity: 41.0 •Access to safe water 71.1% •Access to latrines 95.8 •% •HHDD ,4fgrps= 0.6%	<u>Dolow IDPs-</u> Very Critical

	Nutrition Surveys (May– July 2012)	MUAC Survey (% <12.5cm)	Health Information System Info	TFC/OTP/ SFC	Other relevant information – Key driving factors	Summary of analysis and change from Deyr 11/12
Gedo	Gedo SIP Pastoral No Surveys Conducted		High (>20%) and decreasing trend of acutely malnourished children	High levels and decreasing admission trends		Gedo SIP Pastoral Insufficient data to make a overall nutrition statement
	Gedo Riverine No Surveys Conducted		High (>20%) and fluctuating trend of acutely malnourished children	High levels and decreasing admission trends		Gedo SIP Riverine Insufficient data to make a overall nutrition statement
	<u>Gedo Agro-pastoral</u> No Surveys Conducted		High (>30%) and increasing trend of acutely malnourished children	High levels and increasing admission trends		<u>Gedo Agro- pastoral</u> Insufficient data to make a overall nutrition statement

Nutrition Situation, January 2012



Nutrition Situation, August 2012



GEDO

Area Classification Justification Summary

Livelihood	Current (July '12)	Assumption for Projection (Aug-Dec'12)
Juba Pump Irrigation	<p>Crisis</p> <p>Food Access: marginally able to meet food needs</p> <p>Malnutrition – Very Critical (GAM 22.0)</p> <ul style="list-style-type: none"> •Poor crop production (43% of PWA) •Stock availability: 1-2 months (except Garboharey district for 5 months) •Water access: < 7.5 -17 lts ppp day •Increase (15%) in goat prices (Jan-Jun '12) •Decrease (9%) in cereal prices (Jan-Jun'12) •Increase (19%) in ToT Cereal to Goat (Jan-Jun'12) •Decrease (22%) in daily labour wages (Jan-Jun'12) •Average cash crop production/labour opportunities for poor •High cultivation and irrigations costs •Employing crisis coping strategies 	<p>Crisis</p> <p>Food Access: marginally able to meet food needs</p> <p>Positive Factors</p> <ul style="list-style-type: none"> •Off-Season production expected in Sept-Oct'12 but will not off-set <i>Gu</i> losses •Cash crop activities will continue and provide labour opportunities •Daily labour wages likely to increase from Sept'12 •Planned Humanitarian assistance <p>Negative Factors</p> <ul style="list-style-type: none"> •Cereal prices likely to increase •Security situation likely to remain tense

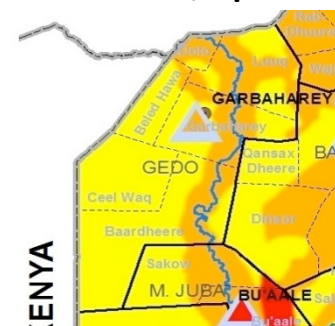
Current Acute Food Insecurity: Household Group Classification

	Phase 1: None	Phase 2: Stressed	Phase 3: Crisis	Phase 4: Emergency	Phase 5: Catastrophe
SIP		100% P			
Dawo Past		100% P			
Southern AP		50% P	50% P		
Gedo High Potential		50%M	100% P; 50%M		
Riverine		100% M	100% P		

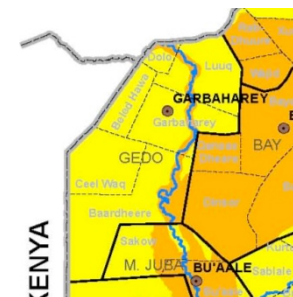
Projected Acute Food Insecurity: Household Group Classification

	Phase 1: None	Phase 2: Stressed	Phase 3: Crisis	Phase 4: Emergency	Phase 5: Catastrophe
SIP		100% P			
Dawo Past		100% P			
Southern AP		50% P	50% P		
Gedo High Potential		50%M	100% P; 50%M		
Riverine		100% M	100% P		

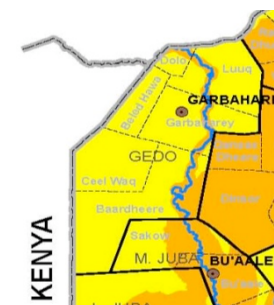
MAP 1: IPC, April 2012



MAP 2: IPC Current July 2012



MAP 3: IPC Projection (Aug-Dec'12)



Affected Rural Population by Districts - Current

Affected Regions and District		UNDP 2005 Rural Population	Assessed and High Risk Population in Crisis and Emergency				
			Post <i>Deyr</i> Projection		Post <i>Gu</i> 2012		
			Crisis	Emergency	Stressed	Crisis	Emergency
Gedo	Baardheere	80,628	22,000	7,000	22,000	26,000	0
	Belet Xaawo	42,392	6,000	1,000	14,000	2,000	0
	Ceel Waaq	15,437	1,000	0	4,000	0	0
	Doolow	20,821	3,000	1,000	7,000	1,000	0
	Garbahaarey/Buur Dhuubo	39,771	8,000	1,000	12,000	1,000	0
	Luuq	48,027	7,000	4,000	13,000	5,000	0
	SUB-TOTAL	247,076	47,000	14,000	72,000	35,000	0
Total Affected Population in CRISIS & EMERGENCY			61,000		72,000	35,000	

Affected Rural Population by Livelihoods - Current

Affected Regions and Livelihood Zone		Estimated Population in Livelihood Zones	Assessed and High Risk Population in Crisis and Emergency				
			Post <i>Deyr</i> Projection		Post <i>Gu</i> 2012		
			Crisis	Emergency	Stressed	Crisis	Emergency
Gedo	Gedo Agro-Pastoral High Potential	26,607	14,000	0	5,000	18,000	0
	Dawa Pastoral	111,023	12,000	0	35,000	0	0
	Juba Pump Irrigated Riverine	31,236	8,000	11,000	15,000	11,000	0
	Southern Agro-Pastoral	31,731	10,000	3,000	6,000	6,000	0
	Southern Inland Pastoral	46,479	3,000	0	11,000	0	0
	SUB-TOTAL	247,076	47,000	14,000	72,000	35,000	0
Total Affected Population in CRISIS & EMERGENCY			61,000		72,000	35,000	

Affected Urban Population by Districts - Current

District		UNDP 2005 Urban Population	Assessed and High Risk Population in Crisis and Emergency							
			Deyr 2011/12				Post Gu 2012			
			Stressed	Crisis	Emergency	Total in Crisis or Emergency as % of Urban population	Stressed	Crisis	Emergency	Total Urban in Crisis and Emergency as % of Urban population
Gedo	Baardheere	25,544	9,000	10,000	0	39	10,000	5,000	0	20
	Belet Xaawo	13,597	5,000	5,000	0	37	5,000	3,000	0	22
	Ceel Waaq	4,559	2,000	2,000	0	44	2,000	1,000	0	22
	Doolow	5,674	2,000	2,000	0	35	2,000	1,000	0	18
	Garbahaarey/Buur Dhuubo	17,252	6,000	7,000	0	41	6,000	3,000	0	17
	Luuq	14,676	5,000	6,000	0	41	6,000	3,000	0	20
	SUB-TOTAL	81,302	29,000	32,000	0	39	31,000	16,000	0	20

Affected Rural Population by Districts - Projection

Affected Regions and District		UNDP 2005 Rural Population	Assessed and High Risk Population in Crisis and Emergency				
			Post <i>Deyr</i> Projection		Post <i>Gu</i> Projection		
			Crisis	Emergency	Stressed	Crisis	Emergency
Gedo	Baardheere	80,628	22,000	7,000	22,000	26,000	0
	Belet Xaawo	42,392	6,000	1,000	14,000	2,000	0
	Ceel Waaq	15,437	1,000	0	4,000	0	0
	Doolow	20,821	3,000	1,000	7,000	1,000	0
	Garbahaarey/Buur Dhuubo	39,771	8,000	1,000	12,000	1,000	0
	Luuq	48,027	7,000	4,000	13,000	5,000	0
	SUB-TOTAL	247,076	47,000	14,000	72,000	35,000	0
Total Affected Population in CRISIS & EMERGENCY			61,000		72,000	35,000	

Affected Rural Population by Livelihoods - Projection

Affected Regions and Livelihood Zone		Estimated Population in Livelihood Zones	Assessed and High Risk Population in Crisis and Emergency				
			Post <i>Deyr</i> Projection		Post <i>Gu</i> Projection		
			Crisis	Emergency	Stressed	Crisis	Emergency
Gedo	Gedo Agro-Pastoral High Potential	26,607	14,000	0	5,000	19,000	0
	Dawa Pastoral	111,023	12,000	0	35,000	0	0
	Juba Pump Irrigated Riverine	31,236	8,000	11,000	15,000	11,000	0
	Southern Agro-Pastoral	31,731	10,000	3,000	6,000	5,000	0
	Southern Inland Pastoral	46,479	3,000	0	11,000	0	0
	SUB-TOTAL	247,076	47,000	14,000	72,000	35,000	0
Total Affected Population in CRISIS & EMERGENCY			61,000		72,000	35,000	

District		UNDP 2005 Urban Population	Assessed and High Risk Population in Crisis and Emergency							
			Deyr 2011/12				Post <i>Gu</i> Projection			
			Stressed	Crisis	Emergency	Total in AFLC or HE as % of Urban population	Stressed	Crisis	Emergency	Total Urban in Crisis and Emergency as % of Urban population
Gedo	Baardheere	25,544	9,000	10,000	0	39	10,000	5,000	0	20
	Belet Xaawo	13,597	5,000	5,000	0	37	5,000	3,000	0	22
	Ceel Waag	4,559	2,000	2,000	0	44	2,000	1,000	0	22
	Doolow	5,674	2,000	2,000	0	35	2,000	1,000	0	18
	Garbahaarey/Buur Dhuubo	17,252	6,000	7,000	0	41	6,000	3,000	0	17
	Luuq	14,676	5,000	6,000	0	41	6,000	3,000	0	20
	SUB-TOTAL	81,302	29,000	32,000	0	39	31,000	16,000	0	20

The End