



*Information for Better Livelihoods*



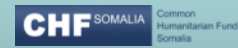
# Gedo Region

## Presentation

### *Deyr 2011/12 Analysis*

26<sup>th</sup> January 2012

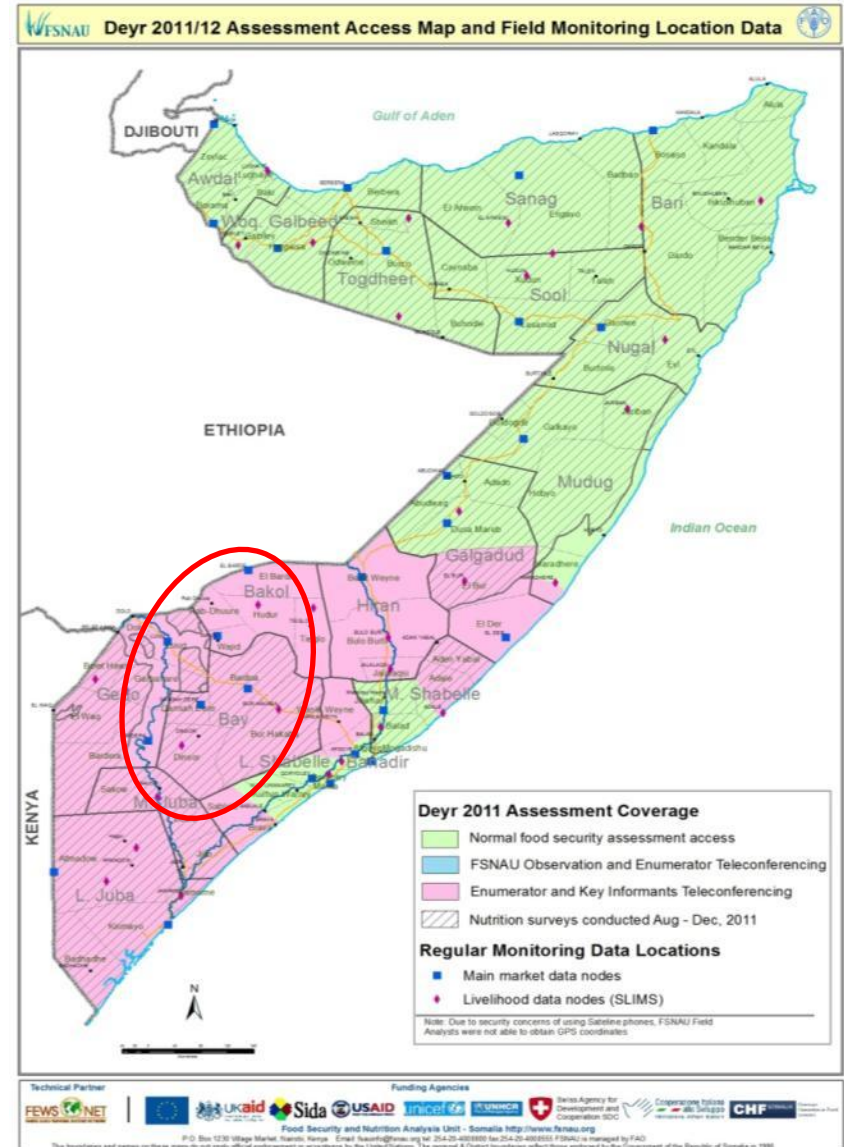
Technical  
Partner



Donors

## Field Access and Field Data Locations

- Due to general insecurity in the region and the recent ban imposed on key humanitarian agencies by the insurgents, direct field access was not possible.
- Food security data was collected through teleconferencing with FSNAU enumerators and key informants.



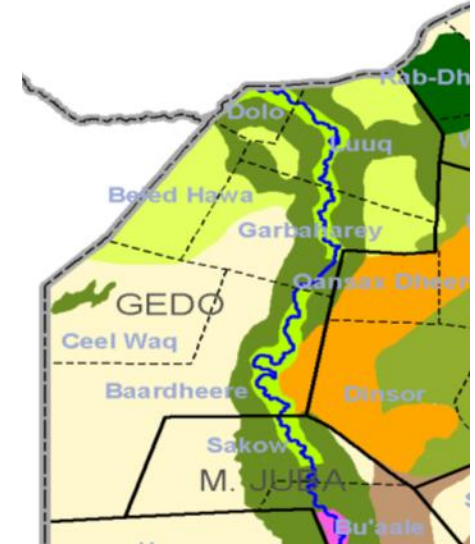
# Main Livelihood Groups

## Sources of Food and Income

### Livelihood Groups & Main Sources of Food and Income

#### 2 Pastoral Livelihoods (Southern Inland and Dawo Pastoralists)

- ☐ Primary sources of income of poor: sale of livestock & livestock products
- ☐ Primary sources of food of poor: purchase and own production
- ☐ Primary livelihood assets of poor: camel, cattle and sheep/goat



#### 2 Agropastoral Livelihoods (Southern agropastoral and Gedo-Bay agropastoral high potential)

- ☐ Southern agro-pastoral are more pastoral than agriculturalists. Main sources of income: sale of livestock & livestock products, self-employment (fodder and bush products sales); main sources of food: purchase and own production
- ☐ Gedo-Bay agropastoral are more agriculturalists than pastoralists. Main sources of income: sale of crops, livestock products and labour; main sources of food: own crop production and purchases.

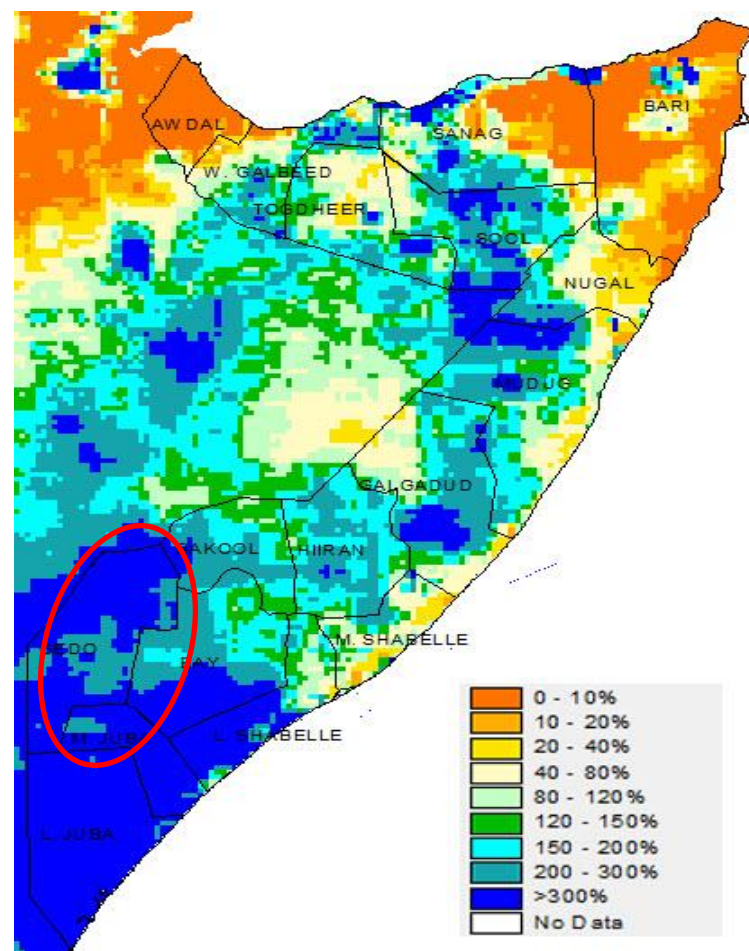
**Riverine Livelihood (Juba riverine pump irrigation)** are agriculturalists. Main sources of income: sale of crops and labour; main sources of food: purchase and own crop production.

# Climate

## Performance of the *Deyr* 2011/12 Rainfall

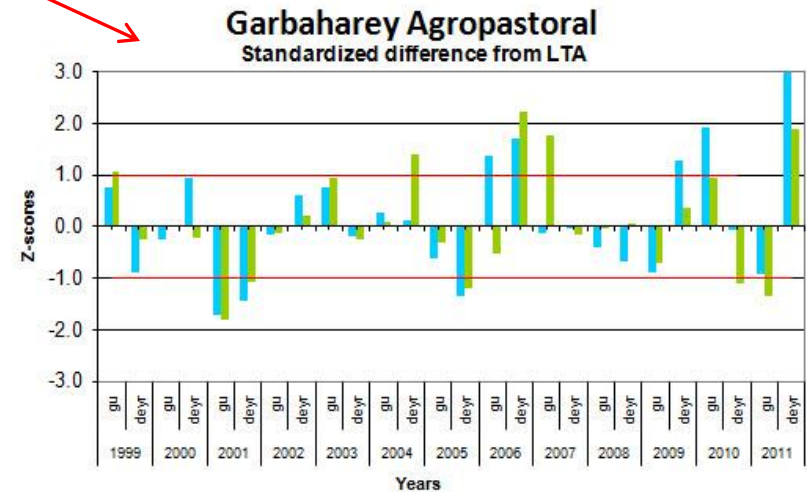
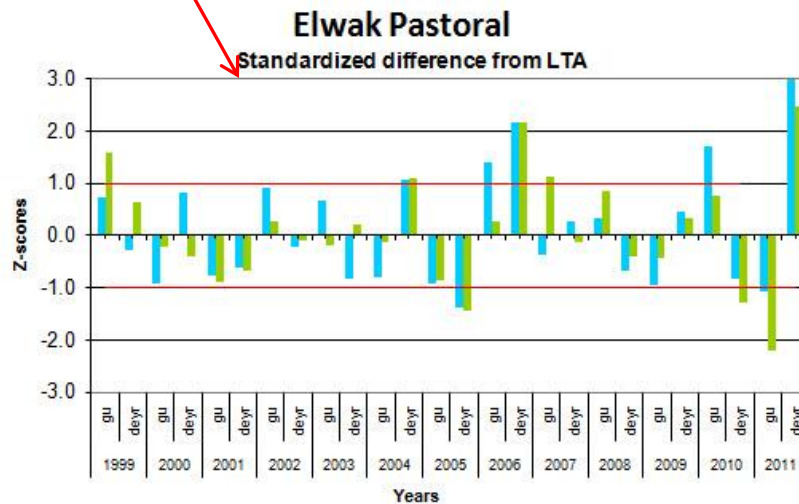
- Start of Season: started on time, good rains received in last two *dekads* of October 2011 and first two *dekads* of November 2011.
- Temporal and Spatial Distribution: good intensity, duration and frequencies of rainfall in the entire region.
- Rainfall amount:
  - Average rains received in most of Bardera, and Garbaharey (Buurduubo and Dhubaa villages) districts; Good rains fell in Gedo High Potential LZ.
  - In most parts of Gedo rains were over 300% of normal, while localized areas received 200-300% of normal.
  - In the first dekad of November 2011 excessive rains caused flash flooding in pockets of Elwaq and Ceelcade of Garbaharey districts.

**Deyr 2011 RFE percent from normal (Long-term mean)**



Source: NOAA



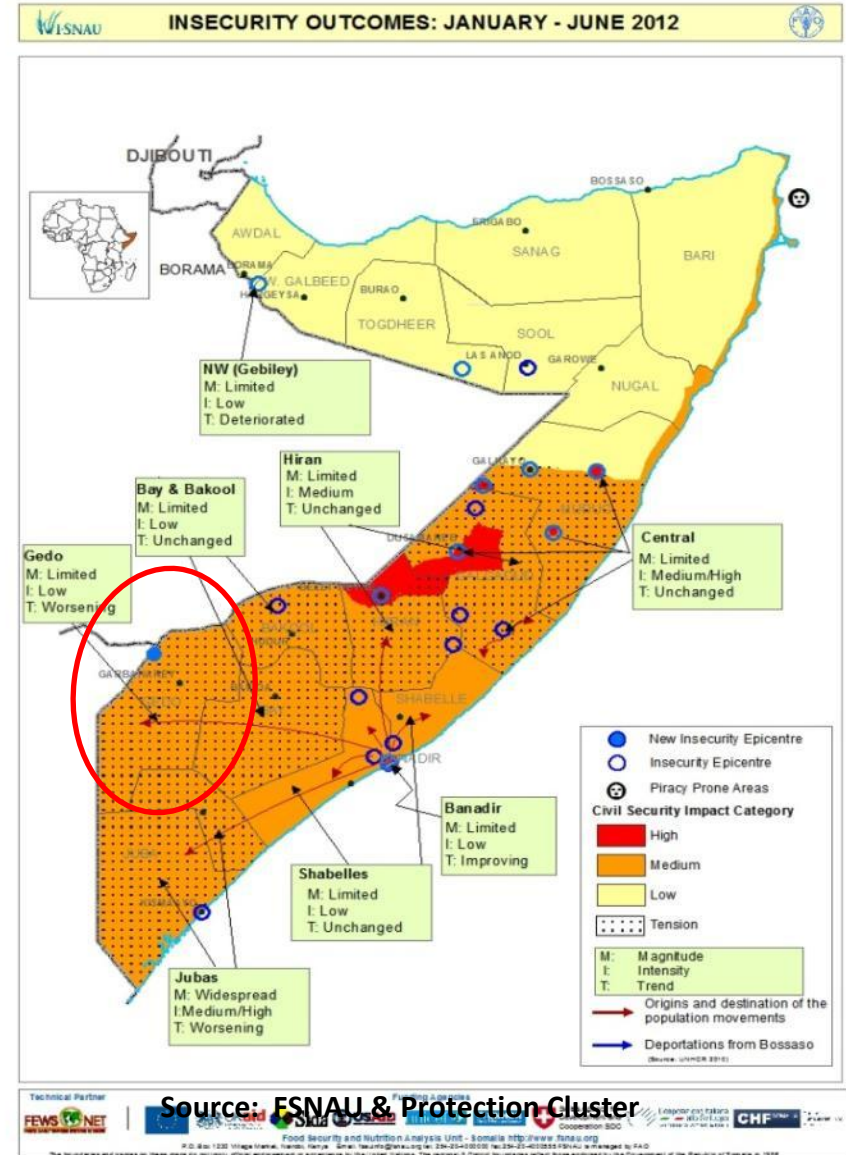


## ➤ Civil Security Situation:

- Incidences of air bombardments
- Militias are extending frontline with new bases in confrontation areas

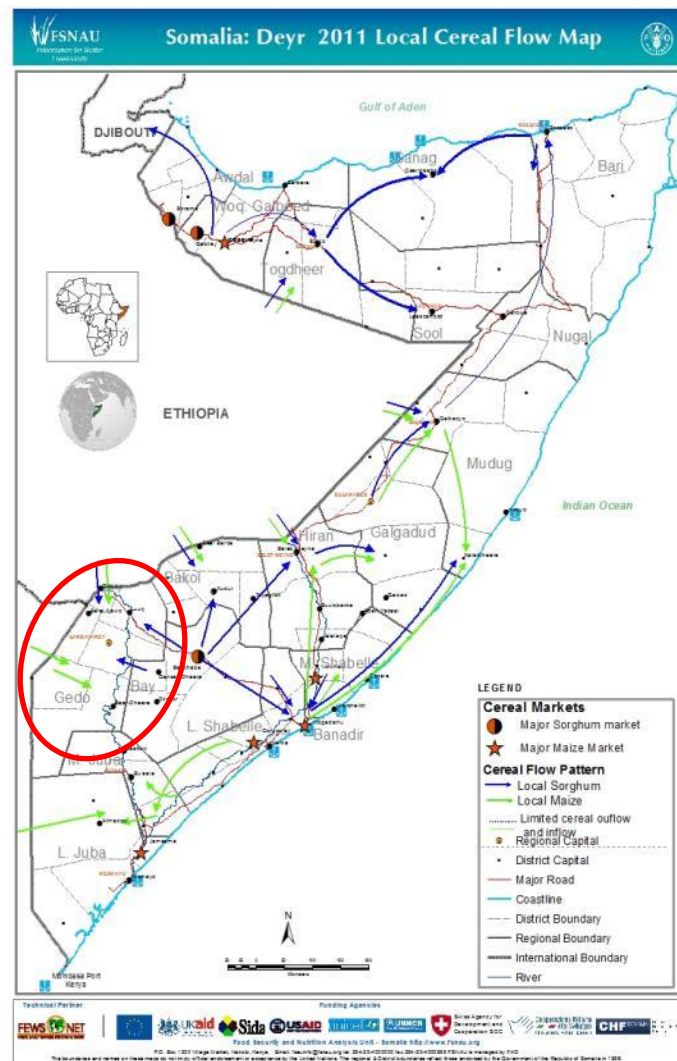
## ➤ Direct and Indirect Impacts on Food Security & Nutrition:

- Human casualties
- Increased population displacement to safer places within region.
- Imposed restrictions on trade movement particularly in Beledhawa, Ceelwaaq and Garbaharey towns.



## Deyr '11/12 Local Cereal Flow Map

- Bay region supplies sorghum to Gedo.
- Some supplies of maize and sorghum through cross-border trade from Ethiopia to Gedo
- Major supply of imported commodities come from Mogadishu



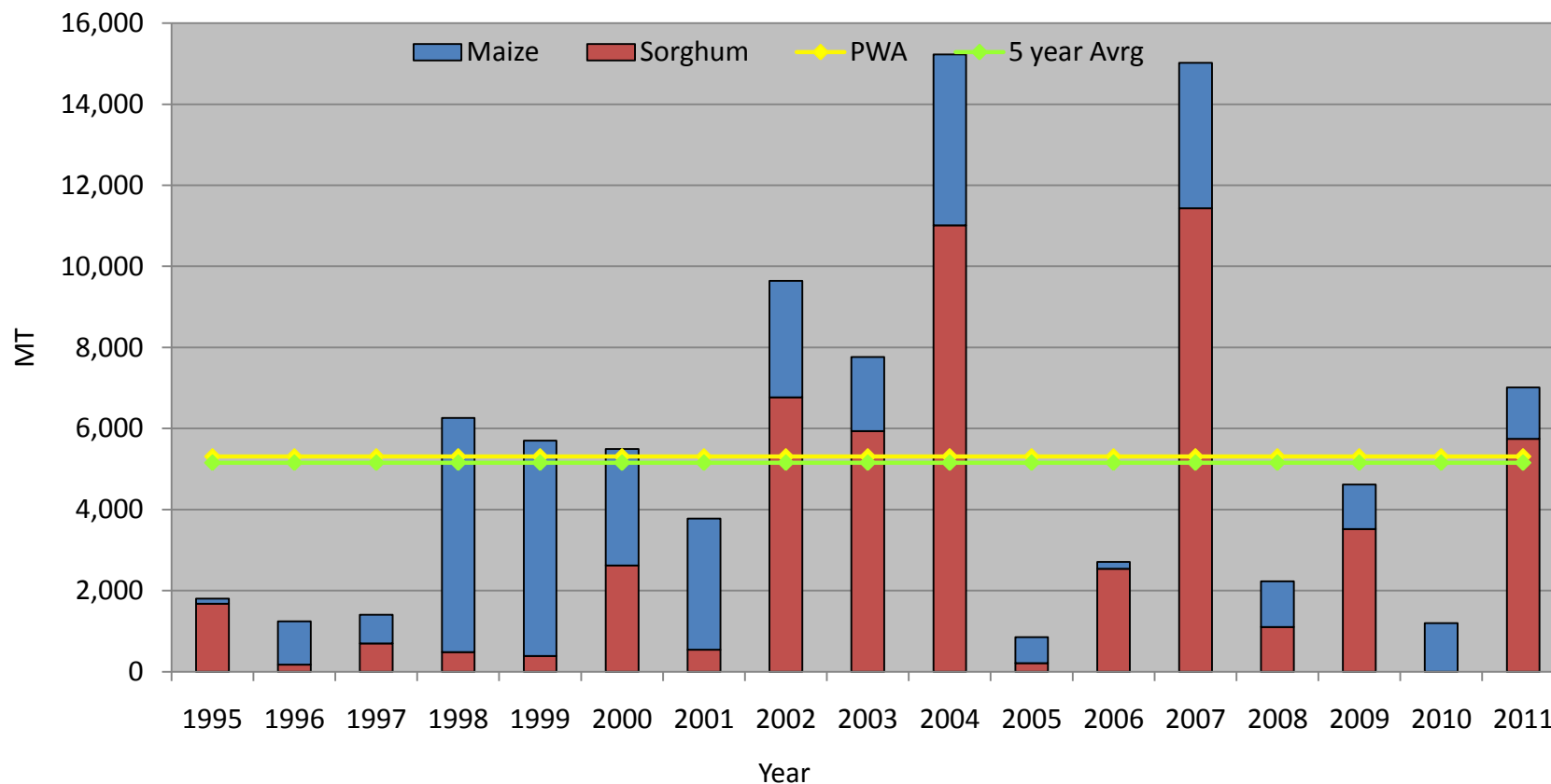
# Agriculture

## Deyr '11/12 Crop Production Estimates

| Districts                   | Deyr 2011/12 Production in MT |         | Total Cereal | Deyr 2011/12 as % of Deyr PWA (1995-2010) | Deyr 2011/12 as % of 5 year average (2006-2010) |
|-----------------------------|-------------------------------|---------|--------------|---|---|
|                             | Maize                         | Sorghum |              |   |   |
| Baardheere                  | 380                           | 4,456   | 4,836        | 111%                                      | 100%  |
| Belet Xaawo                 | 140                           | 212     | 352          | 251%                                      | 1828%   |
| Ceel Waaq                   | 0                             | 0       | 0            | 0%  | 0%  |
| Dolow                       | 168                           | 184     | 352          | 244%                                      | 785%  |
| Garbahaarey/<br>Buur Dhuubo | 329                           | 311     | 640          | 264%                                      | 519%  |
| Luuq                        | 254                           | 578     | 832          | 198%                                      | 659%  |
| Gedo Deyr<br>2011 Total     | 1,271                         | 5,741   | 7,012        | 132%                                      | 136%  |



*Deyr Cereal Production Trends (1995-2011)*



| Districts        | Livelihood Zone      | Cowpea Production (MT) | Sesame Production (MT) | Onion Production (MT) |
|------------------|----------------------|------------------------|------------------------|-----------------------|
|                  |                      |                        |                        |                       |
| Bardere          | Agro-pastoral        | 4                      | 15                     | 0                     |
|                  | Riverine             | 0                      | 0                      | 180                   |
| Garbaharey       | Agro-pastoral        | 2                      | 0                      | 0                     |
|                  | Riverine             | 4                      | 0                      | 96                    |
| Luuq             | Agro-pastoral        | 5                      | 8                      | 0                     |
|                  | Riverine             | 4                      | 0                      | 120                   |
| Beled haawo      | Agro-pastoral        | 1                      | 0                      | 0                     |
|                  | Riverine             | 0                      | 0                      | 0                     |
| Dolow            | Agro-pastoral        | 3                      | 0                      | 0                     |
|                  | Riverine             | 2                      | 0                      | 60                    |
| Total Livelihood | <b>Agro-pastoral</b> | <b>15</b>              | <b>23</b>              | <b>0</b>              |
|                  | <b>Riverine</b>      | <b>10</b>              | <b>0</b>               | <b>456</b>            |
| Total Region     |                      | <b>25</b>              | <b>23</b>              | <b>456</b>            |

# Agriculture

## *Deyr* 2011 Assessment Photos



Good Sorghum Crop. Dabadheer, Bardera, Gedo Dec. 2011



Good Maize Rainfed Crop. Khadijo Haji, Belethawa, Gedo, Dec. 2011.

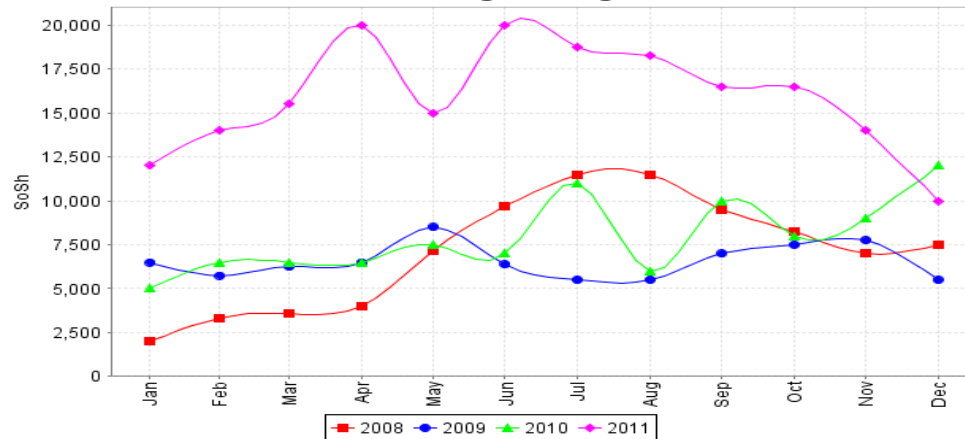


Good Lemon Crop. Buulomusley, Luuq, Gedo, Dec. 2011



Good access to labour from humanitarian assistance. Luuq, Gedo; Dec. 2011

**Red Sorghum 1kg**

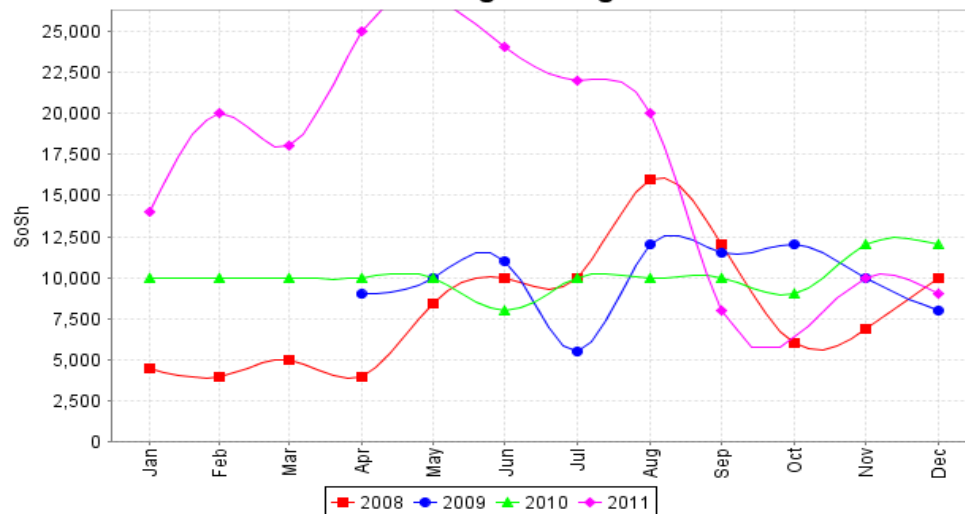


### Regional Trend in Sorghum Prices: S. Gedo - Bardhere

#### Factors Influencing Cereal Prices

- Significant food distribution by humanitarian agencies in the region
- Good sorghum production in agro-pastoral livelihood of the region.

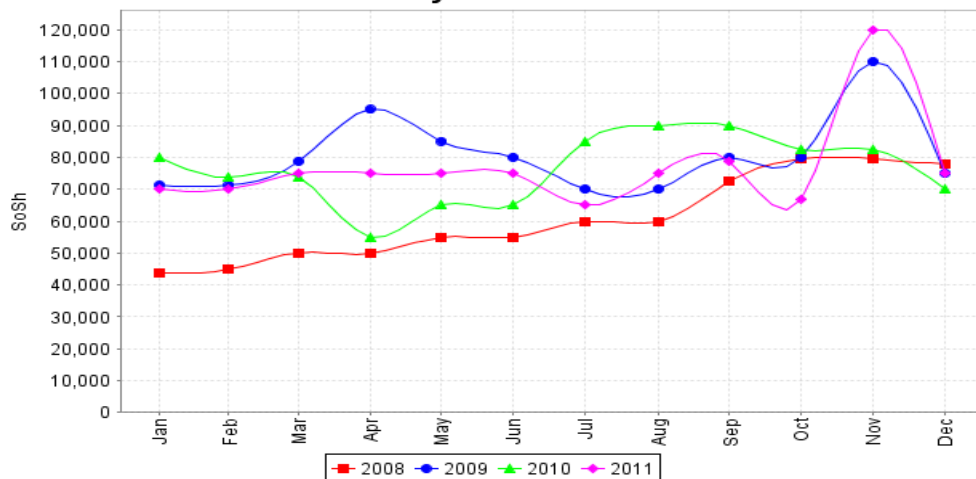
**Red Sorghum 1kg**



### Regional Trend in Sorghum Prices: N. Gedo - Luuq



**Daily Labor Rate**

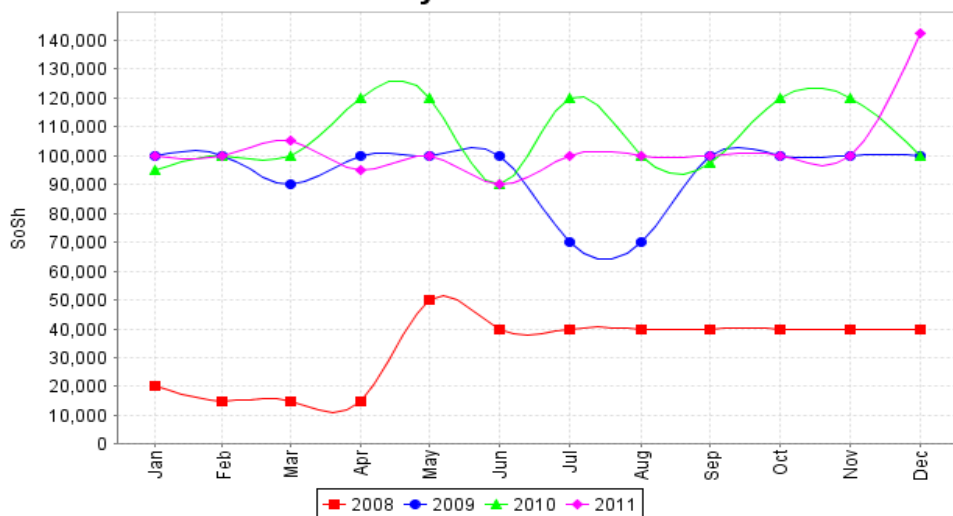


### Regional Trend in Daily Labour rate (Bardhere)

#### Factors Influencing Wage Labour:

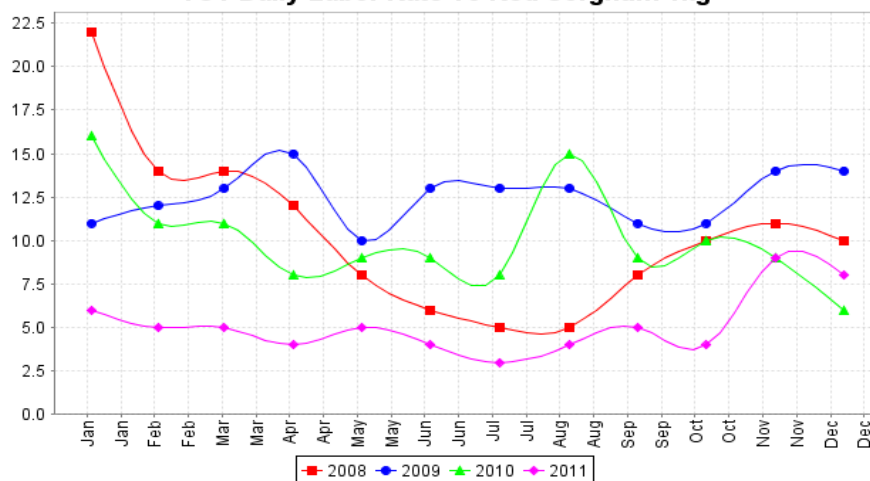
- Labour opportunities reduced in Bardhera due to decline in farming activities in the riverine following the river flooding and flash floods
- Improved labour opportunities related to activities by the humanitarian agencies (CFW, etc.) and farming activities in agropastoral areas due to good seasonal performance in the region

**Daily Labor Rate**



### Regional Trend in Daily Labour rate (Luuq)

**TOT Daily Labor Rate To Red Sorghum 1kg**

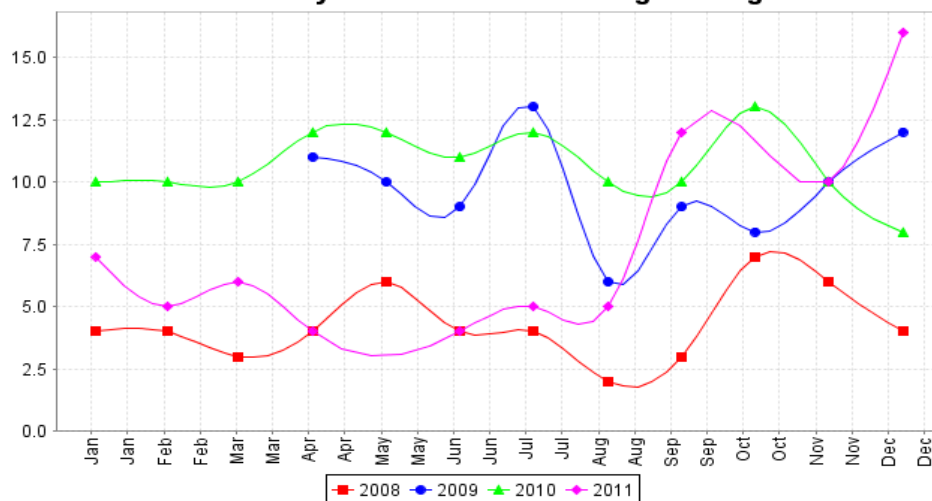


**Regional trend in daily labour rate/sorghum: Bardhere**  
(increased from 6kg in Dec '10 to 8kg in Dec '11)

### Factors Influencing TOT Labour/Cereal:

- Reduced cereal prices.
- Increased daily labour wage rates due to high labour demand.

**TOT Daily Labor Rate To Red Sorghum 1kg**

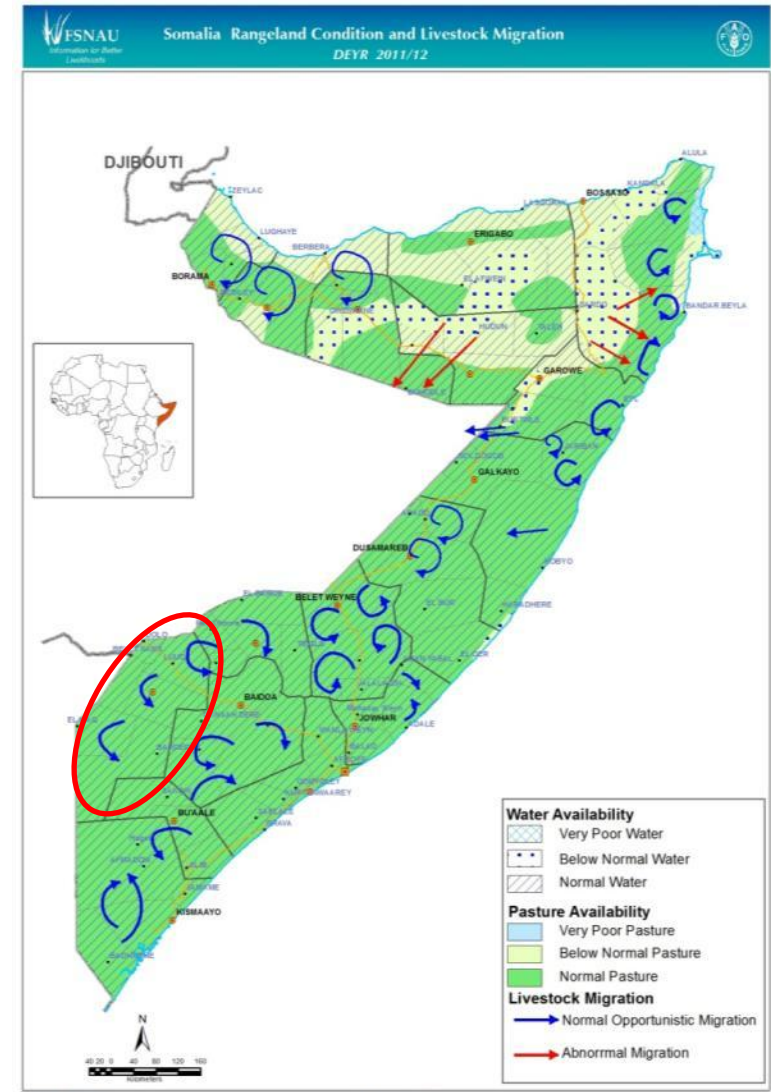


**Regional trend in daily labour rate/sorghum: Luuq**  
(increased from 8kg in Dec '10 to 16kg in Dec '11)

# Livestock

## Rangeland Conditions, Water and Livestock Migration *Deyr 2011*

- Significantly improved rangeland and water conditions
- Normal livestock migration
- Livestock body condition for all species are improving (3-4 of PET score)
- No livestock disease outbreak



# Livestock

## Trends in Livestock Holdings and Milk Production

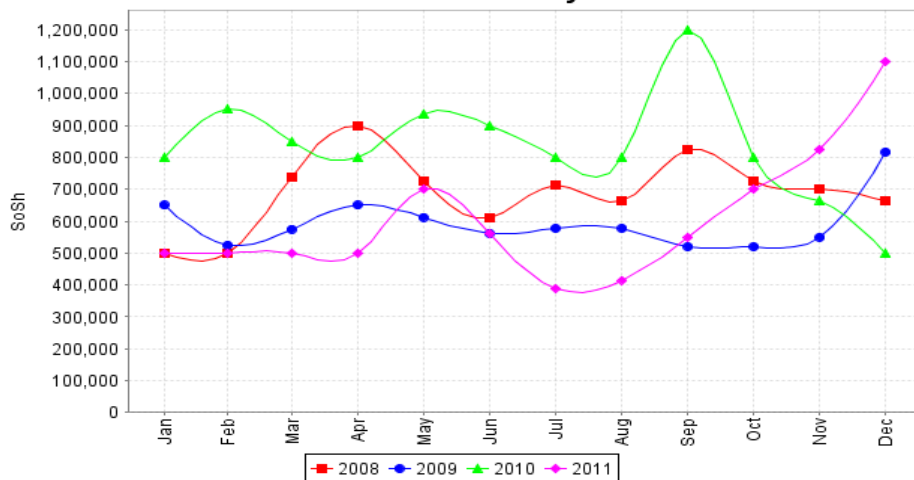
| Conception<br>(Deyr '11) | Calving/kidding<br>(Deyr '11) | Milk production<br>(Deyr '11) | Expected calving/ kidding<br>Jan – Jun '12 | Trends in Herd Size (June 2012) |   |
|--------------------------|-------------------------------|-------------------------------|--|---------------------------------|---|
|                          |                               |                               |  | Livelihoods                     | Livestock Species                                   |
| High for all species     | Camel: Low                    | Cattle/Shoats: Low            | Camel: Low                                 | Southern Inland Pastoral        | Camel: Same (Near Baseline)                         |
|                          | Cattle: Low                   | Camel: Average to Low         | Cattle: Low                                |                                 | Cattle: Slightly increased<br>(Below Baseline)      |
|                          | Shoats: Low                   |                               | Shoats: High                               |                                 | Sheep/goats: Slightly increased<br>(Below Baseline) |
|                          |                               |                               |  | Southern Agro-pastoral          | Camel: Same (Near Baseline)                         |
|                          |                               |                               |  |                                 | Cattle: Slightly increased<br>(Below Baseline)      |
|                          |                               |                               |  |                                 | Sheep/goats: Slightly increased<br>(Below Baseline) |
|                          |                               |                               |  | Dawa Pastoral                   | Camel: Same (Near Baseline)                         |
|                          |                               |                               |  |                                 | Cattle: Slightly increased<br>(Below Baseline)      |
|                          |                               |                               |  |                                 | Sheep/goats: Slightly increased<br>(Below Baseline) |



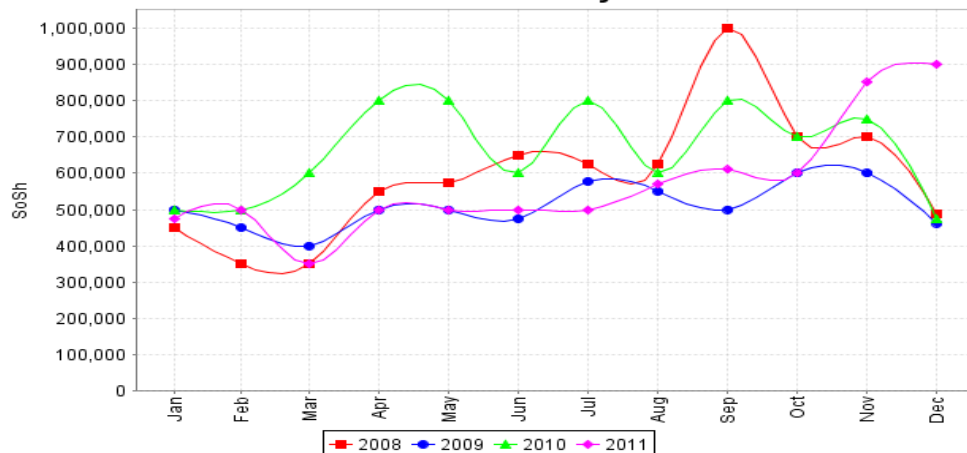
# Markets

## Livestock Prices

**Goat Local Quality**



**Goat Local Quality**



### Regional Trends in Local Quality Goat Prices (Bardhere)

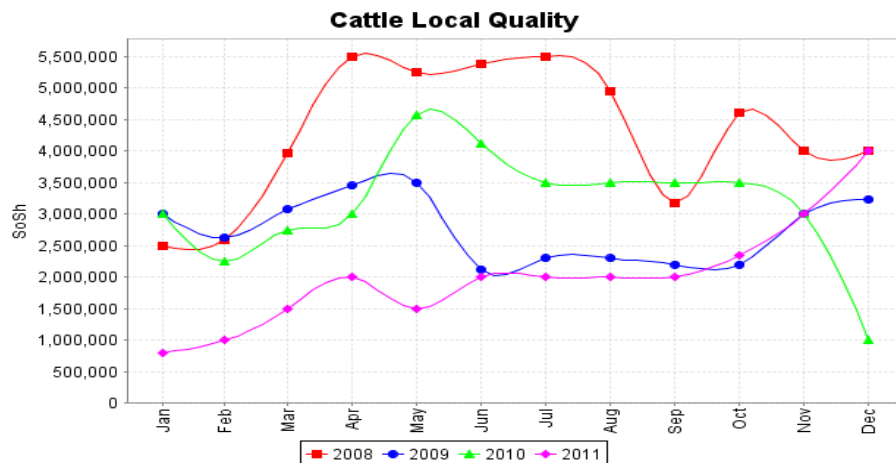
#### Factors influencing local quality goats prices:

- Good livestock body condition due to good *Deyr* '11/12 performance.
- High livestock demand (for example *Hajj* period)

### Regional Trends in Local Quality Goat Prices (Luuq)

# Markets

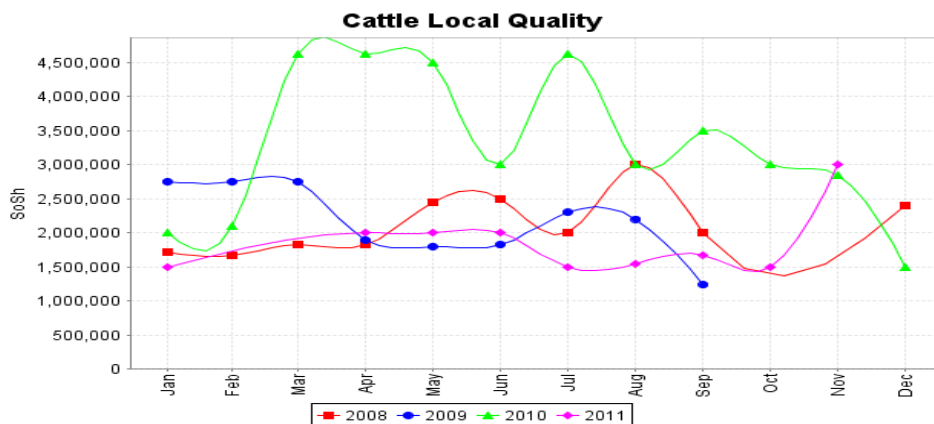
## Livestock Prices



**Regional Trends in  
Local Quality Cattle Prices:  
Bardhere**  
(300% and 100% higher than  
Dec. '10 and since Jul '11,  
respectively)

### Factors Influencing Cattle Prices:

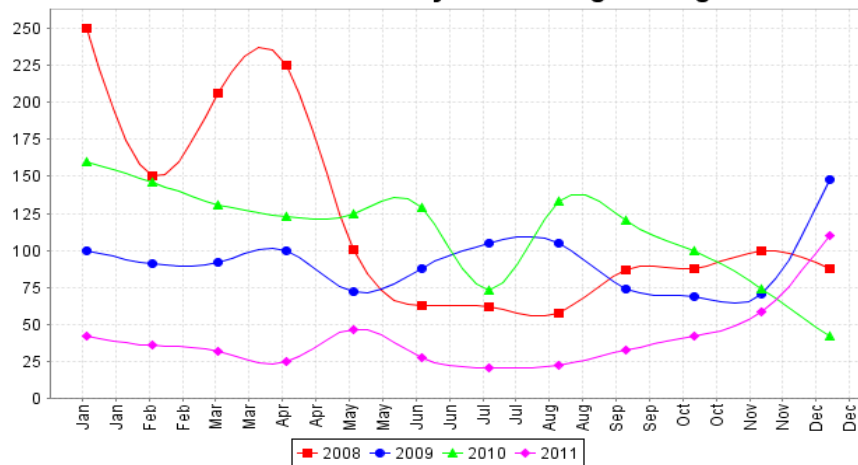
- Good livestock body condition due to Good Deyr '11/12 performance.
- Improved access to Garissa market for cattle sales



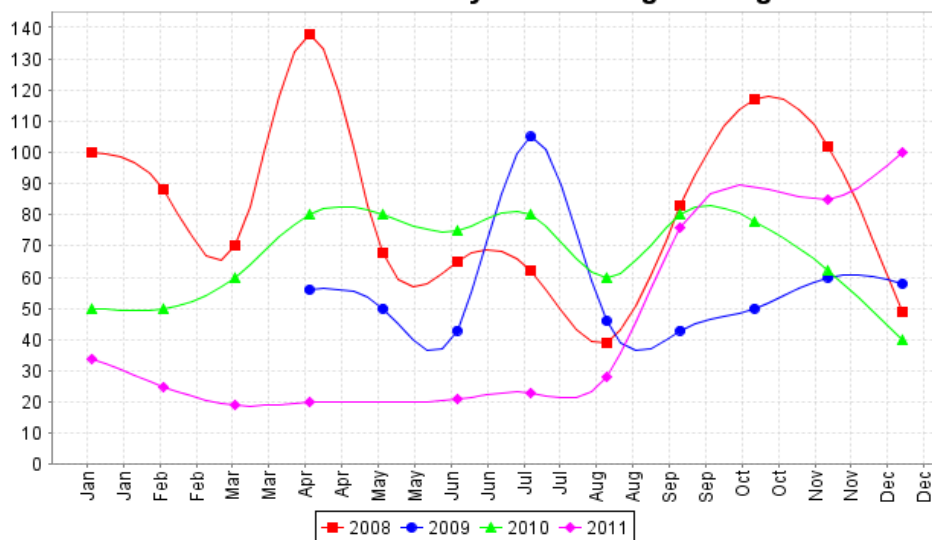
**Regional Trends in  
Local Quality Cattle Prices: Luuq**  
( 5% than Dec. '10 and 50% than  
Jul '11)

## Regional Trends in Terms of Trade

**TOT Goat Local Quality To Red Sorghum 1kg**



**TOT Goat Local Quality To Red Sorghum 1kg**



**Regional Trends in Terms of Trade between local goat/red sorghum : Bardhere (110kg of sorghum/head)**

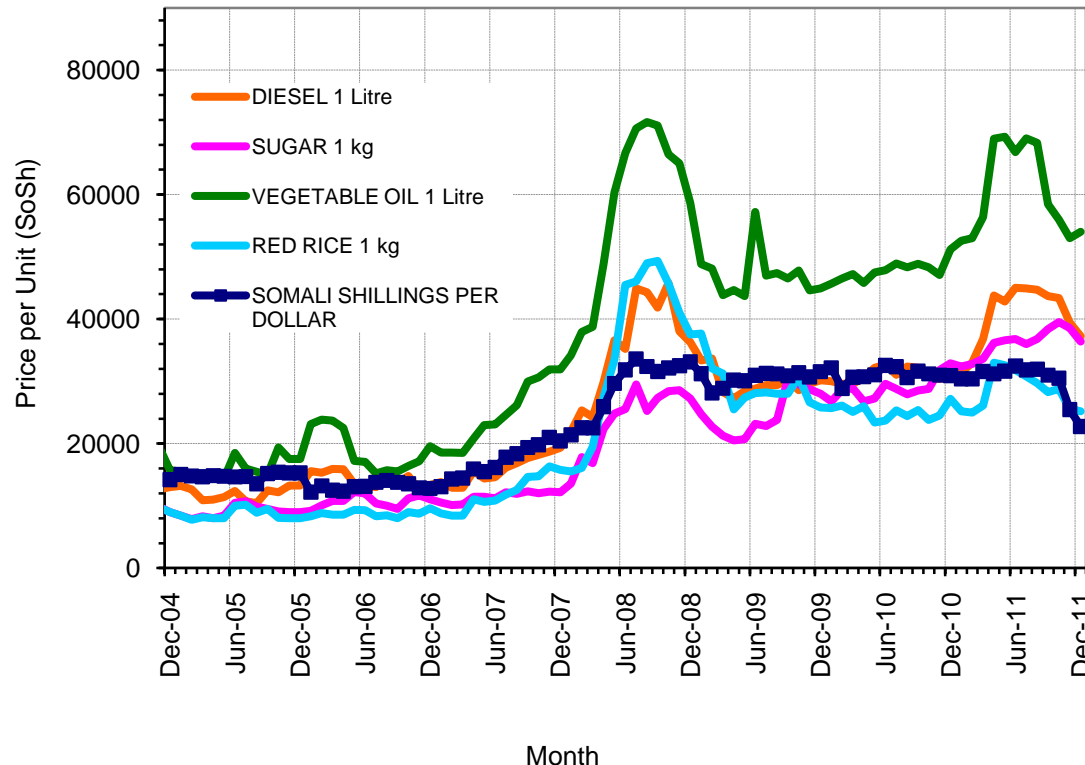
### Factors Influencing Terms of Trade:

- Increased livestock prices due to improved livestock body condition.
- Decreased local cereal prices

**Regional Trends in Terms of Trade between local goat/red sorghum: Luuq (100kg of sorghum/head)**

## Trends in Imported Commodity Prices

Gedo: Imported Commodity Prices  
compared to Exchange Rate



**Prices remained relatively stable or declined for most of the import commodities (last six months trend)**

### Factors Influencing Commercial Import Prices:

- Increased food relief distribution (rice, sugar, and vegetable oil).
- Cash gifts to the target communities and increase USD supply on the market.



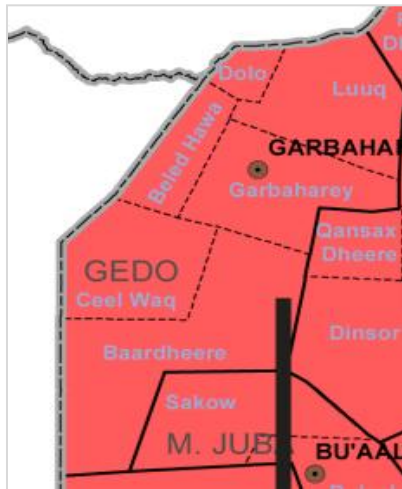
# Nutrition

## Summary of Nutrition Findings

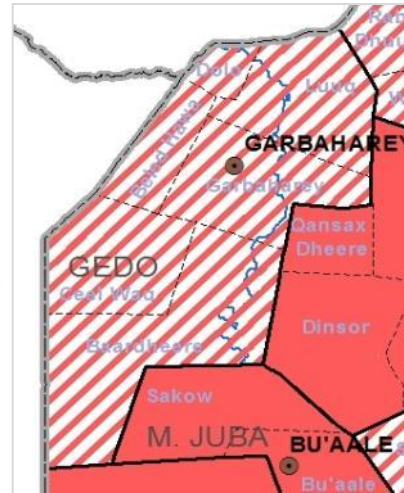
| Region      | Nutrition Surveys<br>(August – Dec11)  | Rapid MUAC<br>Screening<br>(% <12.5cm) | Health<br>Information<br>System Info   | TFC/OTP/<br>SFC   | Other relevant<br>information – Key<br>driving factors   | Summary of<br>analysis and<br>change from<br>Gu 2011  |
|-------------|--|--|--|---|--|---|
| <b>Gedo</b> | <p><u>Gedo Pastoral</u><br/>GAM =32.9 (27.9-38.3)<br/>SAM = 17.7(14.4-21.6).<br/>(FSNAU &amp; partners,<br/>Dec11 R=1)</p> <p><u>Gedo Riverine</u><br/>GAM = NA<br/>SAM =NA</p> <p><u>Gedo Agro-pastoral</u><br/>GAM = NA<br/>SAM = NA</p> | N/A                                    | High (>30%) and Increasing number of acutely malnourished children reported in facilities in pastoral and agro-pastoral and riverine livelihoods ( Source: TROCARE, AMA, SRCS , HIRDA HIS Data , Aug-Dec'11 R=3) | OTP admission show with high (400 monthly) and increasing number of severely malnourished children admitted in OTP in the riverine facilities (TROCARE, HIRDA, AMA- , Aug-Dec'11 R=3) | <p><b>Aggravating factors</b></p> <ul style="list-style-type: none"> <li>-Poor child feeding practice and health seeking behaviors</li> <li>-Poor access to safe water, health and sanitation facilities in rural livelihoods</li> <li>-Reduced humanitarian programmes.</li> </ul> <p><b>Mitigating factors</b></p> <ul style="list-style-type: none"> <li>-Improved milk access in</li> <li>-Increased cereal access</li> <li>- Strong social support</li> </ul> | <p><u><b>Gedo Pastoral</b></u><br/><i>Likely</i> Very <b>Critical-</b> No change from <i>Very Critical</i> phase in <i>Gu'11</i></p> <p><u><b>Gedo Riverine:</b></u><br/><i>Likely</i> Very <b>Critical-</b> No change from <i>Very Critical</i> phase in <i>Gu'11</i></p> <p><u><b>Gedo Agro-pastoral</b></u><br/><br/><i>Likely</i> Very <b>Critical-</b> No change from <i>Very Critical</i> phase in <i>Gu'11</i></p> |

## Nutrition Situation Estimates

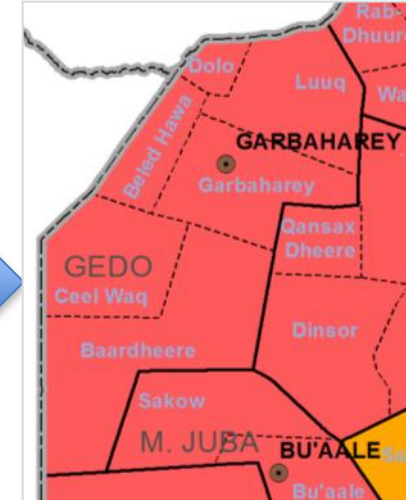
Nutrition Situation Estimates,  
August 2011



Nutrition Situation Estimates  
January 2012



Nutrition Situation Estimates  
February-June 2012



The nutrition situation remains **Very Critical** with slight improvements since the Gu 2011.

### Aggravating Factors

- High morbidity; Poor sanitation and lack of safe water in addition to sub-optimal infant feeding practices
- Low humanitarian interventions (health, nutrition, wash and food) due to restricted access in some areas
- Low immunization and supplementation coverage
- Insecurity/ tension limiting access to food and non-food items

### Mitigating Factors

- Social support; Reducing cereal prices
- Good Deyr season-Improved access to income opportunities for poor households e.g agricultural labour;
- Increased access to milk and livestock products, both for consumption and for income

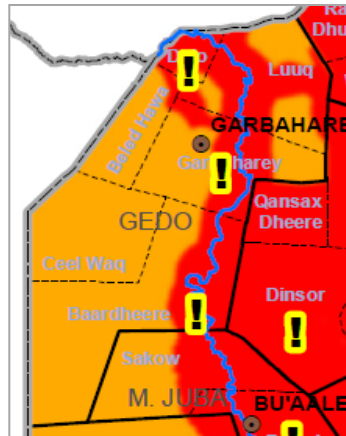
### Nutrition outlook, February-June 2012

A sustained **Very Critical** Nutrition Phase anticipated based on seasonal trends of nutrition situation, food security and disease outbreaks (measles, whooping cough, malaria). Access to humanitarian assistance including health and nutrition services to mitigate the situation is limited.

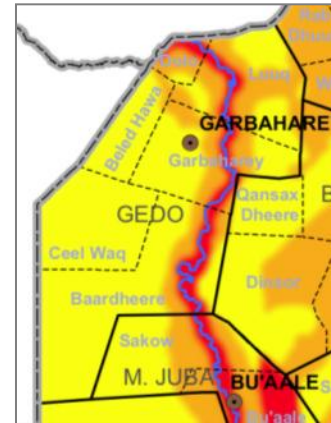
# Gedo

## Progression of Rural IPC Situation

**Map 1: Food Security Situation,  
Nov. - Dec. 2011**



**Map 2: Current Food Security  
Situation, 3 Feb. 2012**



**Current situation:** Significant improvement of food security situation in most livelihoods; sustained Emergency in riverine areas.

### *Contributing Factors*

- ✓ Strengthened purchasing power due to the decline in cereal prices; increase in livestock prices and wage rates
- ✓ Return of outmigrated livestock and increased milk availability
- ✓ Significant humanitarian interventions (food and CFW) and improved social support
- ✓ Harvest failure in the riverine areas due to flooding

### **Outlook for January-June 2012:**

- ✓ Early depletion of stocks (by end March '12) despite some off-season harvest in riverine areas
- ✓ Increase in livestock prices given good pasture and water
- ✓ Increased labour opportunities for *Gu* planting season and cash crops
- ✓ Normal livestock migration, hence less household expenses

*Factors that may aggravate the situation:* Possibility of flooding in case of above normal rains in river catchments of Ethiopian highlands and Somalia; low resilience among affected population given reduced herd sizes; deteriorated security situation

# GEDO

## Rural Population in Crisis by Districts

| Gedo - Affected Districts                                  | UNDP 2005 Rural | Assessed and High Risk Population in Crisis and Emergency |                             |              |               |               |               |
|--|-----------------|---|-----------------------------|--------------|---------------|---------------|---------------|
|  |                 | Gu 2011   |                             |              | Deyr 2011/12  |               |               |
|  |                 | Acute Food and Livelihood Crisis (AFLC)                   | Humanitarian Emergency (HE) | Famine       | Stressed      | Crisis        | Emergency     |
| Baardheere   | 80,628          | 11,000  | 31,000                      | 9,000        | 19,000        | 9,000         | 6,000         |
| Belet Xaawo  | 42,392          | 10,000  | 9,000                       | 0            | 8,000         | 7,000         | 1,000         |
| Ceel Waaq  | 15,437          | 3,000   | 1,000                       | 0            | 3,000         | 1,000         | 0             |
| Doolow   | 20,821          | 5,000   | 5,000                       | 0            | 3,000         | 4,000         | 1,000         |
| Garbahaarey/Buur Dhuubo                                    | 39,771          | 12,000  | 14,000                      | 0            | 7,000         | 10,000        | 0             |
| Luuq   | 48,027          | 10,000  | 14,000                      | 0            | 5,000         | 8,000         | 3,000         |
| <b>SUB-TOTAL</b>   | <b>247,076</b>  | <b>51,000</b>   | <b>74,000</b>               | <b>9,000</b> | <b>45,000</b> | <b>39,000</b> | <b>11,000</b> |
| <b>TOTAL AFFECTED POPULATION IN CRISIS &amp; EMERGENCY</b> |                 | <b>134,000</b>  |                             |              | <b>45,000</b> | <b>50,000</b> |               |

# GEDO

## Rural Population in Crisis by Livelihood Zone

| Gedo Region and<br>Affected Livelihood<br>Zones                |                | Assessed and High Risk Population in Crisis and Emergency |                                   |              |               |               |               |
|--|----------------|---|-----------------------------------|--------------|---------------|---------------|---------------|
|  |                | GU 2011   |                                   |              | Deyr 2011/12  |               |               |
|  |                | Acute<br>Food and<br>Livelihood<br>Crisis<br>(AFLC)       | Humanitarian<br>Emergency<br>(HE) | Famine       | Stressed      | Crisis        | Emergency     |
| Bay-Bakool Agro-Pastoral                                       | 26,607         | 0   | 15,000                            | 9,000        | 14,000        | 0             | 0             |
| Dawa Pastoral  | 111,023        | 23,000  | 13,000                            | 0            | 23,000        | 13,000        | 0             |
| Juba Pump Irrigated Riverine                                   | 31,236         | 8,000   | 19,000                            | 0            | 0             | 8,000         | 11,000        |
| Southern Agro-Pastoral   | 31,731         | 11,000  | 23,000                            | 0            | 0             | 14,000        | 0             |
| Southern Inland Pastoral                                       | 46,479         | 9,000   | 4,000                             | 0            | 8,000         | 4,000         | 0             |
| <b>SUB-TOTAL</b>   | <b>247,076</b> | <b>51,000</b>   | <b>74,000</b>                     | <b>9,000</b> | <b>45,000</b> | <b>39,000</b> | <b>11,000</b> |
| <b>TOTAL AFFECTED POPULATION<br/>IN CRISIS &amp; EMERGENCY</b> |                | <b>134,000</b>  |                                   |              | <b>45,000</b> | <b>50,000</b> |               |



# GEDO

## Urban Population in Crisis

| District                   | UNDP 2005<br>Total<br>Population      UNDP 2005<br>Urban<br>Population |        | Gu 2011  |                                    |   | Deyr 2011/12 |        |           |   |
|----------------------------|--|--------|--|------------------------------------|---|--------------|--------|-----------|---|
|                            |  |        | Acute Food<br>and<br>Livelihood<br>Crisis (AFLC) | Humanitarian<br>Emergenc y<br>(HE) | Total in<br>AFLC or HE<br>as %of<br>Urban<br>population | Stressed     | Crisis | Emergency | Total Urban<br>in Crisis and<br>Emergency<br>as % of<br>Urban<br>population |
| Gedo                       |  |        |  |                                    |   |              |        |           |   |
| Baardheere                 | 106,172  | 25,544 | 5,000  | 8,000                              | 51  | 9,000        | 10,000 | 0         | 39  |
| Belet Xaawo                | 55,989   | 13,597 | 3,000  | 4,000                              | 51  | 5,000        | 5,000  | 0         | 37  |
| Ceel Waaq                  | 19,996   | 4,559  | 1,000  | 1,000                              | 44  | 2,000        | 2,000  | 0         | 44  |
| Doolow                     | 26,495   | 5,674  | 1,000  | 2,000                              | 53  | 2,000        | 2,000  | 0         | 35  |
| Garbahaarey/Buur<br>Dhuubo | 57,023   | 17,252 | 3,000  | 5,000                              | 46  | 6,000        | 7,000  | 0         | 41  |
| Luuq                       | 62,703   | 14,676 | 3,000  | 4,000                              | 48  | 5,000        | 6,000  | 0         | 41  |
| Sub-Total                  | 328,378  | 81,302 | 16,000   | 24,000                             | 49  | 29,000       | 32,000 | 0         | 39  |

*The End*