

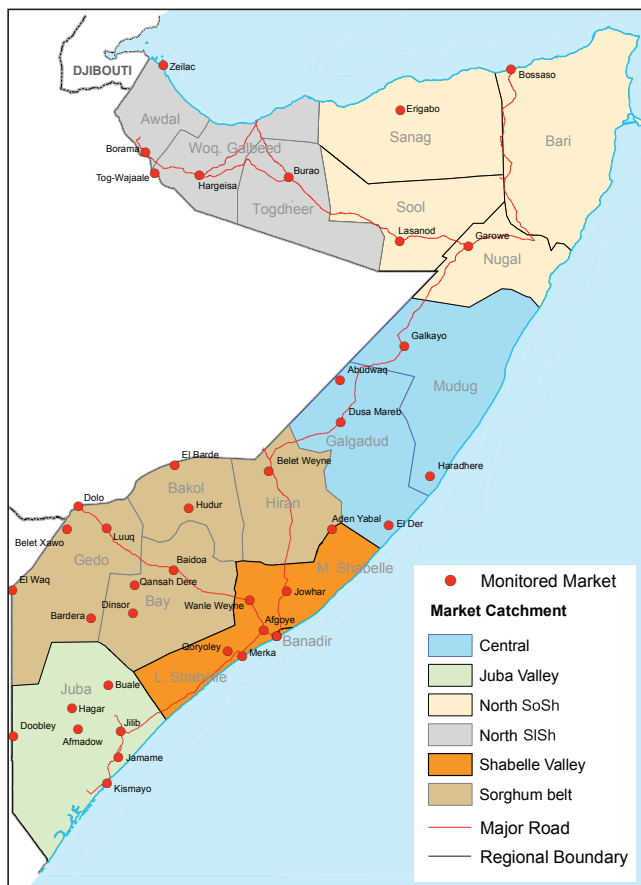
Market Data Update



Food Security and Nutrition Analysis Unit - Somalia



Monthly Market Analysis, January 2011



Highlights

- The Consumer Price Index (CPI), which measures changes in the price of commodities included in Minimum Basket, increased in most Somali Shilling areas (SoSh) during the month of January 2011. From the previous month, the inflation accelerated rapidly by 8% and 6% in Northeast and Central respectively, while increasing marginally (3%) in South and remaining stable in Northwest. The CPI increase in the Somali Shilling zone is mainly attributed to rising prices of sorghum, sugar, cooking oil and milk, which together account for a large portion of the cost of the basket across Somalia (44-76%). Current the CPI is 132-168 percentage above the reference year (March 2007) in SoSh areas.
- The prices of locally produced cereals (maize and red sorghum) continued an increasing trend across the SoSh areas, a reflection of market reaction to the extremely low cereal production in southern Somalia. In January 2011, the red sorghum prices have exhibited a considerable 21% increase in Northeast after relative stability in the previous months as new supplies of red sorghum with elevated prices arrive from the Southern Somalia. In southern and central Somalia the local cereal prices have continued an upward trend, which started from October 2010 in the wake of extremely poor performance of Deyr 2010 season. In January 2011, the respective increases in the average prices of maize in Juba and Shabelle regions were equivalent to 6% and 3%. Red sorghum prices have also risen in Sorghum Belt and central regions by 4% and 7%, respectively. These increases are relatively moderate compared to considerable price hikes of the previous 3 months (up 20%). Across the south-central markets, the local cereal prices in January 2010 are significantly higher than the same month a year ago (Juba - 59%; Shabelle - 21%; Sorghum Belt - 66%¹; Central - 57%; Banadir region - 52%). However, in the Northeast they are only 14% higher likely due to interventions by various humanitarian agencies. Also, in the Northwest which received the highest cereal production (*Gu/Karan* 2010) in the last 10 years, the white sorghum prices are 25% lower than in January 2010. In contrast, prices of most imported commodities continued to stabilize over the last month, though slightly higher than their levels last year mainly due to increased transport costs following recent resurgence in demand of oil in the international markets.
- The relative purchasing power is slightly weaker in January 2011 compared to the previous month but significantly below the levels of the previous year (Jan. '10) in most regions of the country due to rising local cereal prices and decreased labour wage rates. Terms of Trade (ToT) between daily labour wage and cereal have shown a significant decline over the last year in southern regions of Shabelle (29%), Juba (49%) and Sorghum Belt (45%). In spite of this, the highest ToT in January 2011 was still observed in cereal producing regions of Sorghum Belt, Shabelle and Juba (5-8 kgs cereal for daily wage) as well as Northwest regions, while the lowest persisted in Central (3kgs cereal for daily wage).
- In January 2011, exchange rates between the Somaliland Shilling (SiSh) and US dollar appreciated significantly (22%), while the SoSh remained relatively stable against the US dollar in all other regions of the country. The significant appreciation of the SiSh is mainly attributable to increased foreign exchange earnings from livestock exports during the Hajj period as well as macro-economic stability in the region.

¹ Beletahawa market where red sorghum price has shown a decline since a year ago due to increased inflow of cereals through cross-border trade with Kenya, is excluded from the calculation of the average as an outlier

Regional Highlights

- **Juba Valley:** prices of most monitored commodities remained generally stable in the past one month except for maize which appreciated by 6%. Casual labour on the other hand decreased significantly (15%) leading to depreciated purchasing power of labour wage to cereal by 14% compared to December 2010 and 49% compared to same period last year.
- **Sorghum Belt:** except for sorghum and camel milk prices which are 54% and 52% respectively higher than their levels in January 2010, prices of most monitored commodities remained generally stable over the last month. ToT labour to cereal is also significantly (45%) lower than its January 2010 levels due higher cereal prices.
- **Shabelle Valley:** maize prices remained generally stable over the month of January compared to the previous month, though they are significantly higher (21%) than their levels a year ago. Reduced labour rates coupled with stable cereal prices over the month of January 2011 lowered the ToT by 4%. However the purchasing power is significantly eroded when compared to a year ago by 23%. The month of January also saw a significant surge in the prices of charcoal and plastic tarpaulin for constructing temporary shanties, signifying the impact of increased destitution and IDP influx in the region.
- **Central:** although labour wage rates remained generally stable, cereal prices increased marginally (5-7%) while livestock prices decelerated by 4-6% over the past one month, consequently normalizing the purchasing power.
- **Northeast:** with the exception of cereal prices which appreciated by 21 % over the last month, livestock prices and purchasing power remained generally stable in January 2011 compared to the previous month.
- **Northwest:** cereal prices are significantly lower, while livestock prices and purchasing power did not change significantly since December 2010
- **Banadir:** prices of locally produced cereals (maize & sorghum) are slightly higher (5% for maize, 11% for sorghum) when compared to the previous month but significantly higher (52-106%) than same month last year. The prices of all other key livelihood items including labour rates remained stable.

This Market Data Update is a monthly report that presents a compilation of tabulated graphical market information produced regularly as part of the monthly monitoring process.

The market price data is collected weekly with average monthly values calculated from 45 main markets throughout Somalia covering the period of 1995 to current.

The 5-year period of 2003-07 was characterised by fairly stable prices and relative low inflation. In this bulletin these years are used as a reference period for seasonal trends comparison.

Market analysis is an integral part of all of FSNAU's Annual Food Security Projections and seasonal technical reports (Technical Reports on FSNAU Post *Gu* and *Deyr* Analysis).

This data is available online on www.fsnau.org/ids.

Technical and Managerial Support



Funding Agencies



National Trends in Market Prices

Figure 1: Relative Purchasing Power for Selected Regions
(Terms of Trade between wage rates and selected cereals)

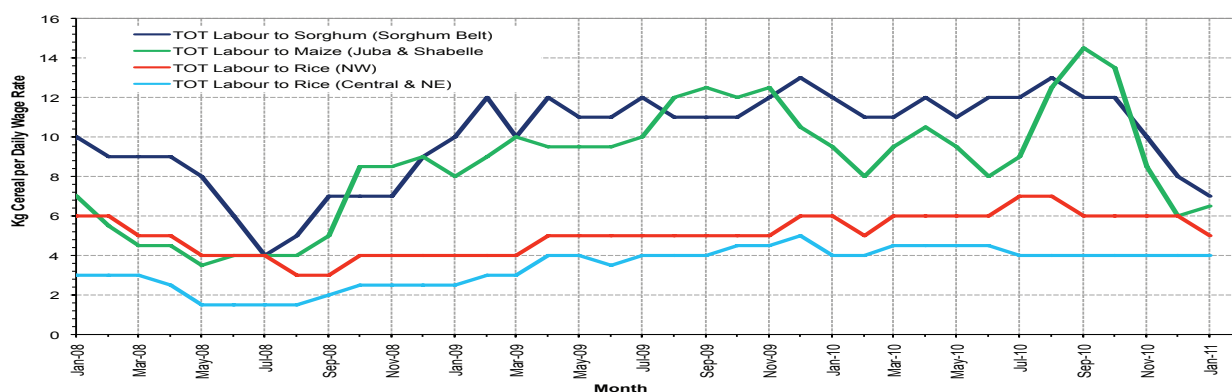


Figure 2: Monthly Exchange Rate for Selected Regions (SoSh and SSh to USD)

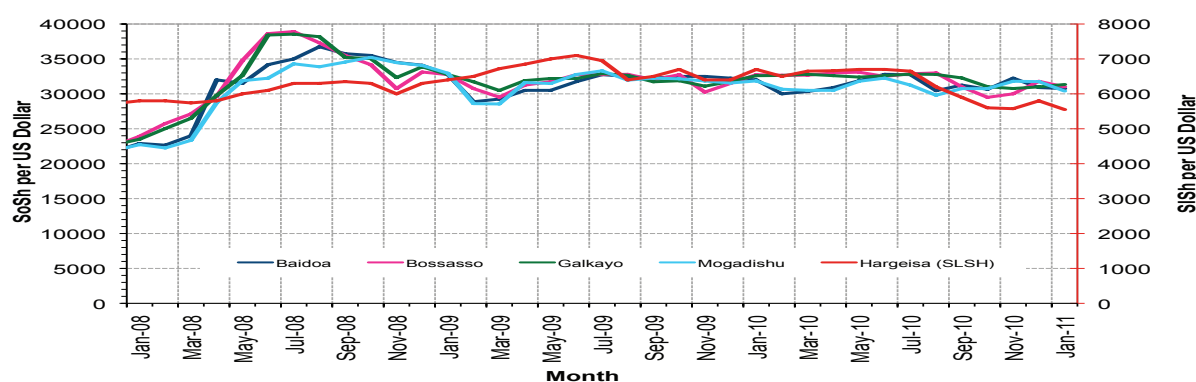


Figure 3: Monthly Trends in Consumer Price Index (CPI)

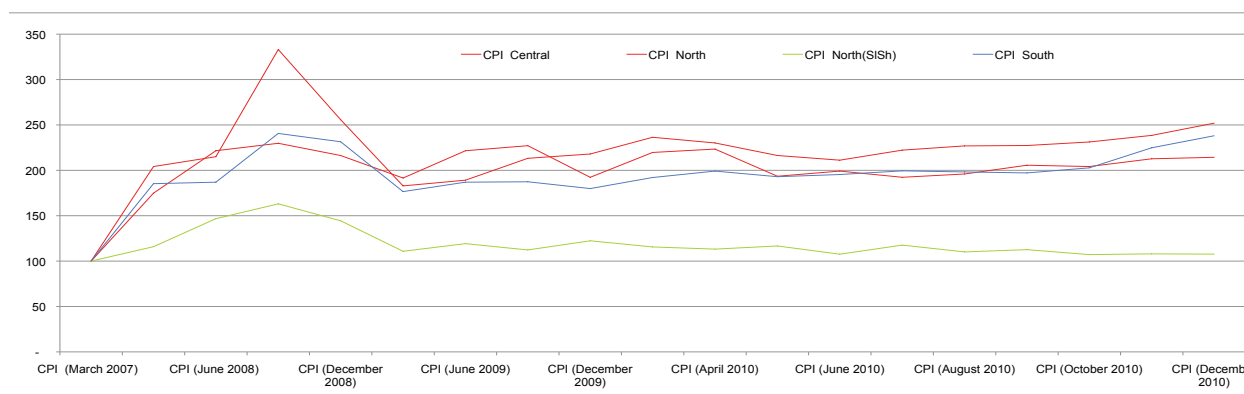
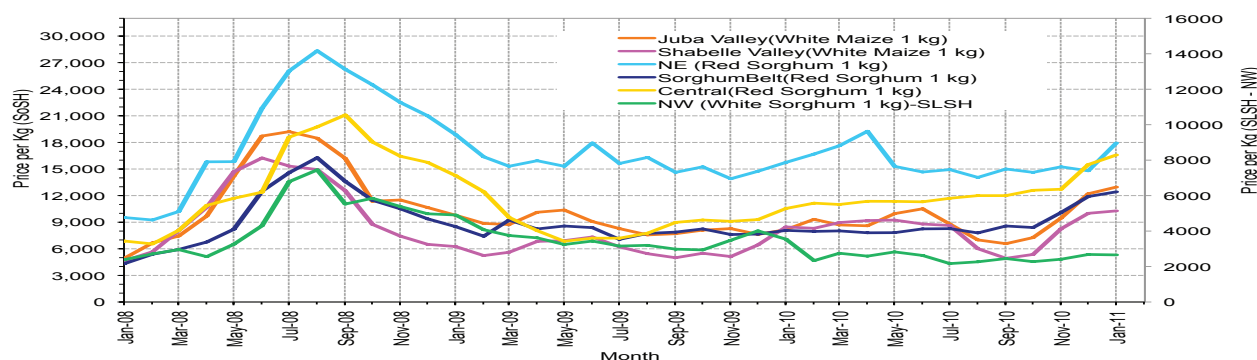


Figure 4: Monthly Trends in Cereal Prices



Regional analysis: Juba Regions

Indicator	5-Year Average	Jan-10	Dec-10	Current Nominal Price	Current Real (Deflated) Price	% Change Same Month Previous Year	% Change Previous Month	% Change 5-year avrg (2003-07)
Imported Commodities Prices								
Diesel 1 litre	11,468	30,607	31,179	31,429	12,775	3%	1%	174%
Imported Red Rice 1kg	7,091	22,786	22,107	22,357	9,059	-2%	1%	215%
Petrol 1 litre	13,206	33,821	34,429	34,000	13,829	1%	-1%	157%
Sugar	7,768	26,857	30,750	30,329	12,325	13%	-1%	290%
Vegetable Oil 1 litre	17,352	47,232	49,286	53,614	21,864	14%	9%	209%
Wheat Flour 1kg	7,294	19,214	25,286	23,986	9,726	25%	-5%	229%
Wheat Grain 1kg	6,000		17,000	16,000	6,455	-	-6%	167%
Cereal Prices								
Red Sorghum 1kg	1,958	6,354	11,250	13,000	5,226	105%	16%	564%
White Maize 1kg	2,067	8,162	12,207	12,964	5,211	59%	6%	527%
Livestock & Livestock Product Prices								
Camel Local Quality (Head)	2,958,273	8,572,958	10,492,918	7,255,834	2,972,366	-15%	-31%	145%
Cattle Local Quality (Head)	1,297,293	4,136,286	2,205,000	1,793,000	734,430	-57%	-19%	38%
Fresh Camel Milk 1 litre	6,350	20,179	20,929	22,243	9,012	10%	6%	250%
Goat Export Quality (Head)	388,618	1,048,250	849,643	829,750	339,820	-21%	-2%	114%
Goat Local Quality (Head)	262,239	722,179	513,214	476,143	194,959	-34%	-7%	82%
Other Essential Items								
Charcoal 50kg	26,565	87,321	85,179	72,000	29,396	-18%	-15%	171%
Cowpeas 1 kg	5,494	19,300	21,536	24,807	10,063	29%	15%	352%
Unskilled Labor Wage Rate	30,983	100,071	81,250	101,786	41,598	2%	25%	229%
Firewood Bundle	2,543	6,286	6,571	6,143		-2%	-7%	142%
Local Sesame Oil 1 litre	20,106	81,429	75,250	77,057	31,468	-5%	2%	283%
Exchange Rate (Somali Shilling per USD)	15,667	31,146	31,746	30,834	12,532	-1%	-3%	97%
Construction Materials								
Cement 50kg	-	-	353,571	343,571	140,649	-	-3%	-
Cooking Pot Aluminium 7 Litre	-	-	335,625	329,875	135,038	-	-2%	-
Galvanised Iron Sheet Ga 26	-	-	162,143	161,143	65,915	-	-1%	-
Hollow Concrete Block 10cm x 20cm x 40cm	-	-	18,400	19,250	7,786	-	5%	-
Non Collapsible Jerrycan 10 Litre	-	-	30,000	40,800	16,614	-	36%	-
Plastic Tarpaulin 14m x 5 m	-	-	600,000	600,000	245,699	-	0%	-
Roofing Nails 15Kg	-	-	819,286	789,371	323,278	-	-4%	-
Timber 2in x 4in x 20ft	-	-	335,667	322,667	132,086	-	-4%	-
Woven Dry Raised Blanket 150cm x 200cm	-	-	-	-	-	-	-	-
Terms of Trade								
Labour Wage (Daily)/ Cereal (Maize(Kg))	15	12	7	8	8	-36%	18%	-48%
Local Goat (Head)/ Cereal (Maize(Kg))	127	88	42	37	37	-58%	-13%	-71%
Price Indices								
Consumer Price Index	-	180	238	244	-	36%	3%	-
Purchasing Power Index	-	0.56	0.42	0.41	-	-26%	-2%	-

* Data has been collected for the past 9 months only

Figure 5: Imported commodity prices compared to exchange rates

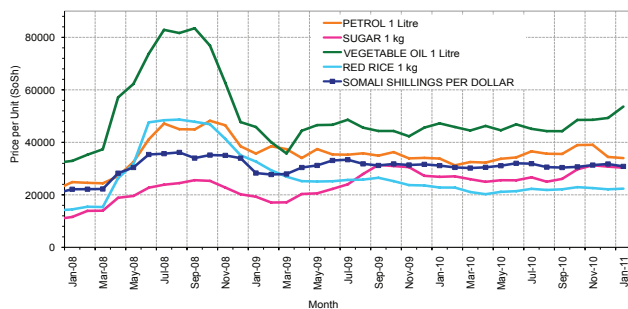
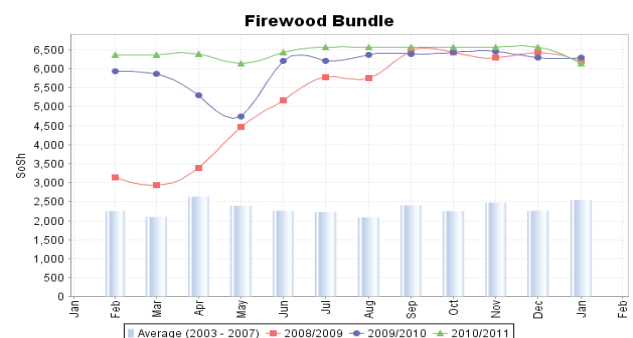
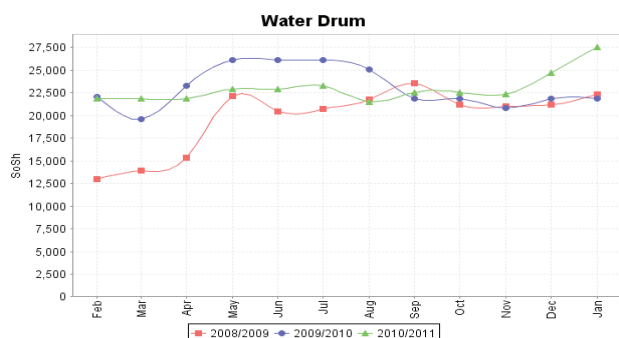
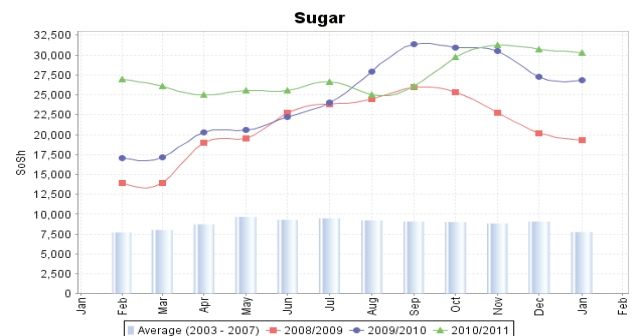
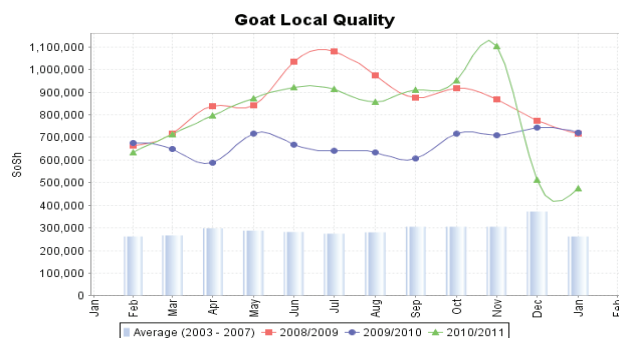
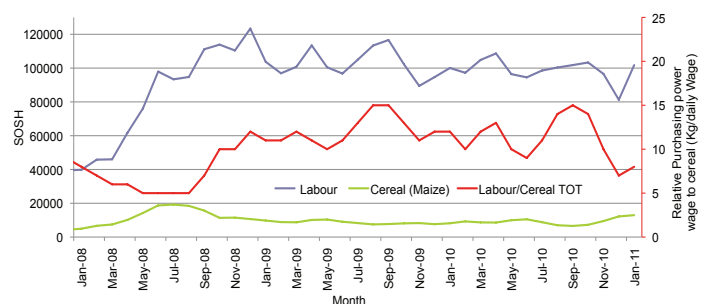


Figure 6: Trends in wage rates, staple cereal prices and relative purchasing power



Regional analysis: Sorghum Belt Regions

Indicator	5-Year Average	Jan-10	Dec-10	Current Nominal Price	Current Real (Deflated) Price	% Change Same Month Previous Year	% Change Previous Month	% Change 5-year avg (2003-07)
Imported Commodities Prices								
Diesel 1 litre	11,359	29,864	32,000	32,409	13,177	9%	1%	185%
Imported Red Rice 1kg	8,001	24,659	25,318	24,318	9,862	-1%	-4%	204%
Petrol 1 litre	13,563	29,625	31,568	31,864	12,954	8%	1%	135%
Sugar	8,889	27,386	32,614	31,455	12,786	15%	-4%	254%
Vegetable Oil 1 litre	18,031	43,977	48,409	51,091	20,830	16%	6%	183%
Wheat Flour 1kg	7,765	21,105	21,477	21,500	8,708	2%	0%	177%
Wheat Grain 1kg	4,350	11,438	12,563	16,563	6,685	45%	32%	281%
Cereal Prices								
Red Sorghum 1kg	1,855	8,077	11,897	12,428	4,991	54%	4%	570%
White Maize 1kg	2,127	10,916	11,809	11,841	4,751	8%	0%	457%
Livestock & Livestock Product Prices								
Camel Local Quality (Head)	3,272,413	8,066,500	6,145,455	6,688,637	2,740,005	-17%	9%	104%
Cattle Local Quality (Head)	1,289,358	2,685,833	1,872,222	1,601,945	656,162	-40%	-14%	24%
Fresh Camel Milk 1 litre	5,828	17,114	24,750	25,977	10,542	52%	5%	346%
Goat Export Quality (Head)	372,584	1,183,000	1,036,894	1,090,909	446,808	-8%	5%	193%
Goat Local Quality (Head)	232,851	667,182	566,818	559,545	229,126	-16%	-1%	140%
Other Essential Items								
Charcoal 50kg	33,246	118,227	128,068	121,659	49,740	3%	-5%	266%
Cowpeas 1 kg	4,715	22,056	26,094	26,225	10,643	19%	1%	456%
Unskilled Labor Wage Rate	18,395	95,364	90,909	91,318	37,310	-4%	0%	396%
Firewood Bundle	1,806	5,091	5,182	5,182	2,023	2%	0%	187%
Local Sesame Oil 1 litre	22,887	77,250	74,429	78,286	31,971	1%	5%	242%
Exchange Rate (Somali Shilling per US	15,762	31,857	30,943	30,391	12,350	-5%	-2%	93%
Construction Materials*								
Cement 50kg	-	-	311,250	316,750	129,662	-	2%	-
Cooking Pot Aluminium 7 Litre	-	-	346,750	320,625	131,249	-	-8%	-
Galvanised Iron Sheet Ga 26	-	-	181,800	178,636	73,081	-	-2%	-
Hollow Concrete Block 10cm x 20cm x	-	-	9,500	10,000	3,997	-	5%	-
Non Collapsible Jerrycan 10 Litre	-	-	50,955	51,705	21,082	-	1%	-
Plastic Tarpaulin 14m x 5 m	-	-	334,100	315,850	129,293	-	-5%	-
Roofing Nails 15Kg	-	-	854,000	869,378	356,054	-	2%	-
Timber 2in x 4in x 20ft	-	-	294,286	269,107	110,144	-	-9%	-
Woven Dry Raised Blanket 150cm x 2C	-	-	119,167	110,833	45,304	-	-7%	-
Terms of Trade								
Labour Wage (Daily)/ Cereal (Sorghum)	10	12	8	7	7	-38%	-4%	-26%
Local Goat (Head)/ Cereal (Sorghum)(K	126	83	48	45	46	-45%	-6%	-64%
Price Indices								
Consumer Price Index	-	180	238	244	-	36%	3%	-
Purchasing Power Index	-	0.56	0.42	0.41	-	-26%	-2%	-

* Data has been collected for the past 9 months only

Figure 7: Imported commodity prices compared to exchange rates

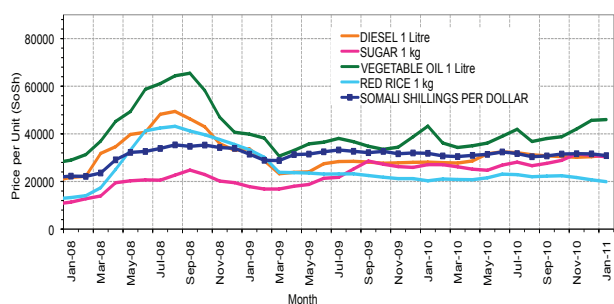
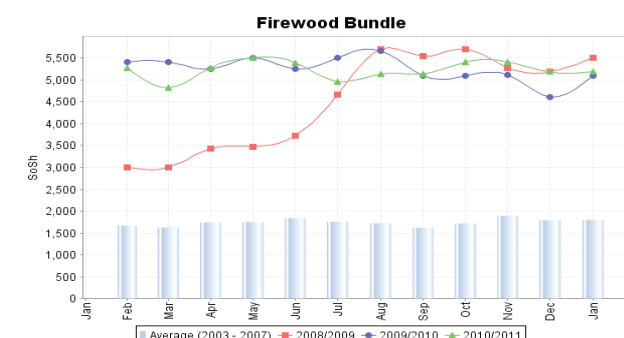
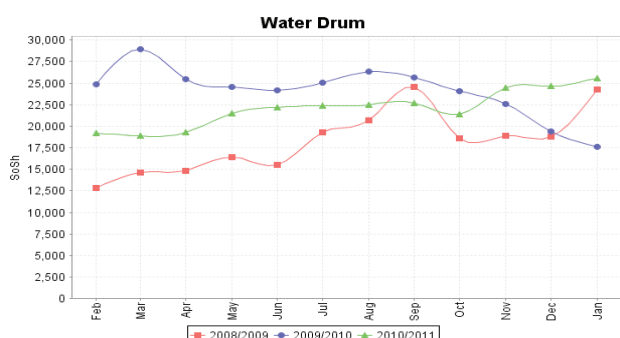
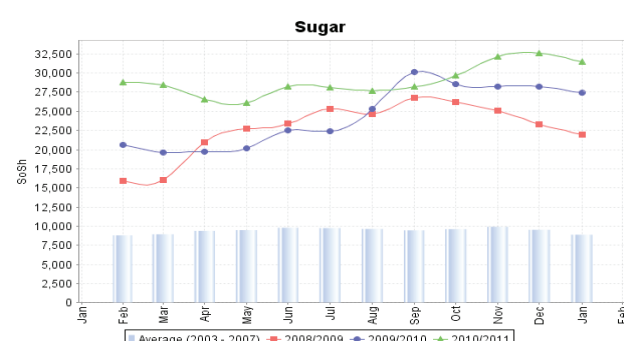
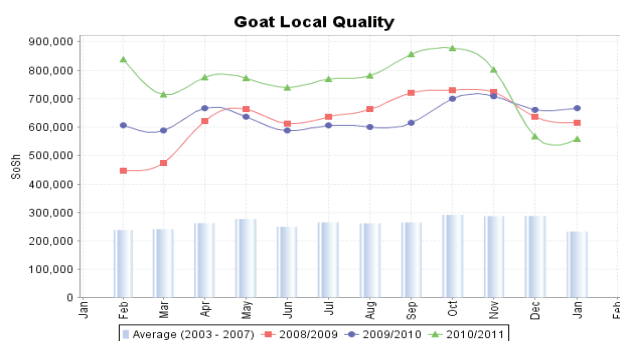
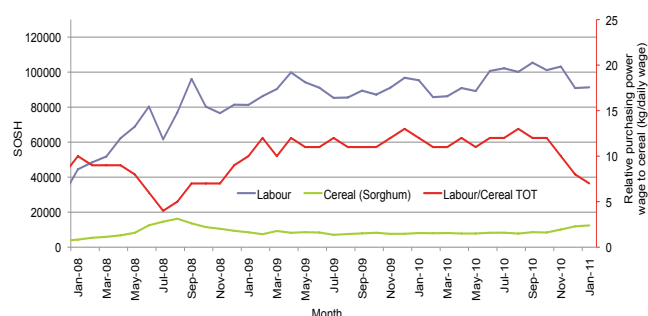


Figure 8: Trends in wage rates, staple cereal prices and relative purchasing power



Regional analysis: Shabelle Regions

Indicator	5-Year Average	Jan-10	Dec-10	Current Nominal Price	Current Real (Deflated) Price	% Change Same Month Previous Year	% Change Previous Month	% Change 5-year avrg (2003-07)
Imported Commodities Prices								
Diesel 1 litre	8,272	28,125	30,417	31,042	12,617	10%	2%	275%
Imported Red Rice 1kg	6,043	20,292	20,708	19,917	8,059	-2%	-4%	230%
Petrol 1 litre	10,229	28,833	32,458	31,708	12,890	10%	-2%	210%
Sugar	7,041	27,083	30,958	30,375	12,344	12%	-2%	331%
Vegetable Oil 1 litre	13,115	43,250	45,667	46,000	18,745	6%	1%	251%
Wheat Flour 1kg	6,015	15,667	18,833	19,000	7,684	21%	1%	216%
Wheat Grain 1kg	3,330			-	-	-	-	-
Cereal Prices								
Red Sorghum 1kg	2,192	8,004	12,100	12,100	4,857	51%	0%	452%
White Maize 1kg	2,191	8,469	10,005	10,278	4,111	21%	3%	369%
Livestock & Livestock Product Prices								
Camel Local Quality (Head)	4,471,041	10,555,000	10,497,500	11,175,000	4,577,913	6%	6%	150%
Cattle Local Quality (Head)	1,226,175	3,595,000	2,590,000	2,645,000	1,083,466	-26%	2%	116%
Fresh Camel Milk 1 litre	4,659	11,042	20,333	19,667	7,957	78%	-3%	322%
Goat Export Quality (Head)	509,677	1,287,083	1,183,750	1,221,042	500,119	-5%	3%	140%
Goat Local Quality (Head)	348,436	1,008,333	879,167	862,500	353,237	-14%	-2%	148%
Other Essential Items								
Charcoal 50kg	39,625	111,236	93,108	109,083	44,588	-2%	17%	175%
Cowpeas 1 kg	4,203	19,237	24,604	24,011	9,736	25%	-2%	471%
Unskilled Labor Wage Rate	17,787	57,583	55,000	54,000	22,022	-6%	-2%	204%
Firewood Bundle	1,932	3,833	4,125	3,833		0%	-7%	98%
Local Sesame Oil 1 litre	19,431	69,458	64,000	61,042	24,907	-12%	-5%	214%
Exchange Rate (Somali Shilling per USD)	16,289	31,830	31,600	30,854	12,540	-3%	-2%	89%
*Construction Materials								
Cement 50kg	-	-	278,000	272,750	111,636	-	-2%	-
Cooking Pot Aluminium 7 Litre	-	-	887,500	720,000	294,859	-	-19%	-
Galvanised Iron Sheet Ga 26	-	-	118,900	118,950	48,630	-	0%	-
Hollow Concrete Block 10cm x 20cm x 40cm	-	-	13,750	13,750	5,533	-	0%	-
Non Collapsible Jerrycan 10 Litre	-	-	49,563	50,000	20,383	-	1%	-
Plastic Tarpaulin 14m x 5 m	-	-	206,667	279,000	114,197	-	35%	-
Roofing Nails 15Kg	-	-	849,583	644,375	263,878	-	-24%	-
Timber 2in x 4in x 20ft	-	-	58,813	58,250	23,763	-	-1%	-
Woven Dry Raised Blanket 150cm x 200cm	-	-	90,000	80,000	32,673	-	-11%	-
Terms of Trade								
Labour Wage (Daily)/ Cereal (Maize)(Kg))	8	7	5	5	5	-23%	-4%	-35%
Local Goat (Head)/ Cereal (Maize)(Kg))	159	119	88	84	86	-30%	-5%	-47%
Price Indices								
Consumer Price Index	-	180	238	244	-	36%	3%	-
Purchasing Power Index	-	0.56	0.42	0.41	-	-26%	-2%	-

* Data has been collected for the past 9 months only

Figure 9: Imported commodity prices compared to exchange rates

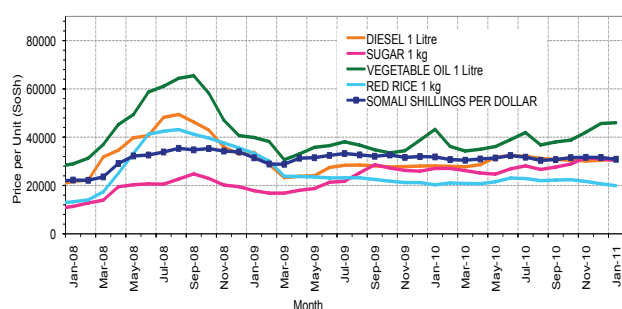
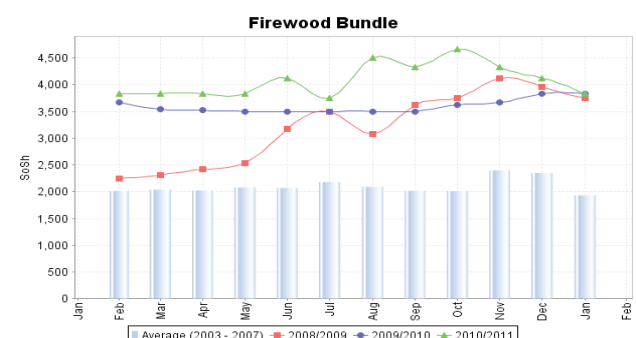
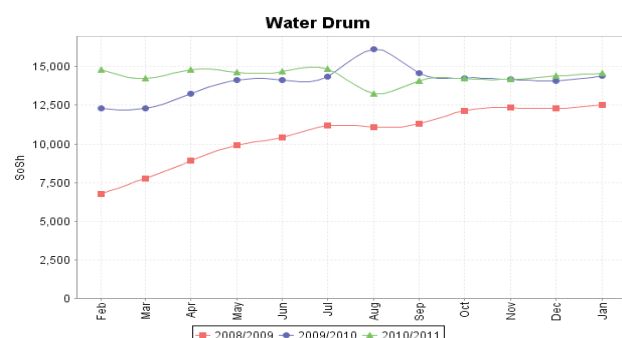
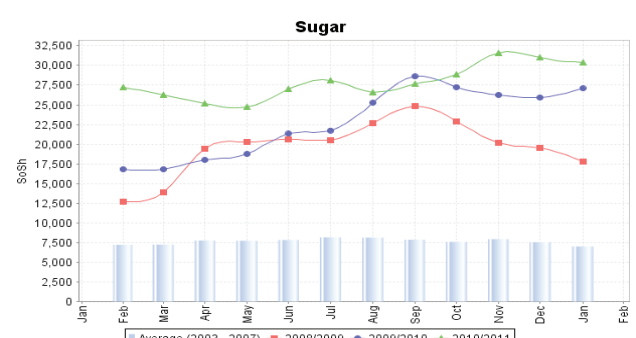
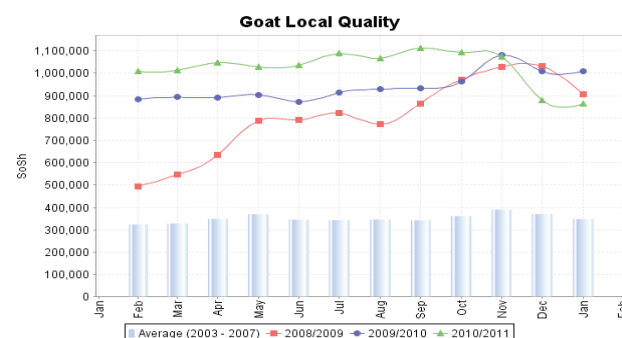
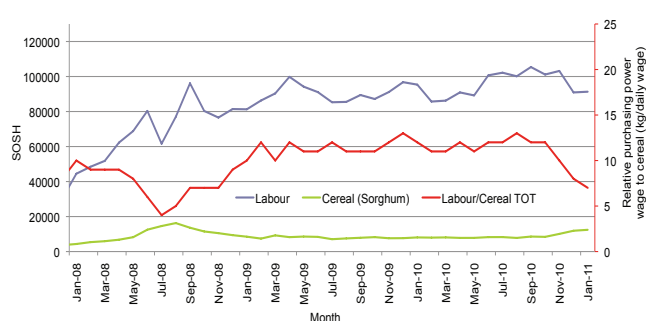


Figure 10: Trends in wage rates, staple cereal prices and relative purchasing power



Regional analysis:Banadir Region

Indicator	5-Year Average	Jan-10	Dec-10	Current Nominal Price	Current Real (Deflated) Price	% Change Same Month Previous Year	% Change Previous Month	% Change 5-year avrg (2003-07)
Imported Commodities Prices								
Diesel 1 litre	8,000	25,000	28,208	28,167	11,439	13%	0%	252%
Imported Red Rice 1kg	5,858	21,750	21,625	21,310	8,630	-2%	-1%	264%
Petrol 1 litre	9,600	24,000	28,250	28,917	11,746	20%	2%	201%
Sugar	6,716	29,000	28,542	29,200	11,862	1%	-1%	335%
Vegetable Oil 1 litre	13,616	43,000	43,708	44,342	18,065	3%	1%	226%
Wheat Flour 1kg	5,725	15,500	17,354	17,438	7,044	13%	0%	205%
Wheat Grain 1kg	4,000	9,750	11,500	16,000	6,455	64%	39%	300%
Cereal Prices								
Red Sorghum 1kg	2,042	6,000	11,137	12,332	4,952	106%	11%	504%
White Maize 1kg	2,351	7,250	10,553	11,055	4,429	52%	5%	370%
Livestock & Livestock Product Prices								
Camel Local Quality (Head)	6,336,666	16,500,000	13,750,000	16,400,000	6,718,416	-1%	19%	159%
Cattle Local Quality (Head)	3,513,333	3,450,000	3,000,000	3,080,000	1,261,670	-11%	3%	-12%
Fresh Camel Milk 1 litre	4,600	14,000	24,583	18,708	7,564	34%	-24%	307%
Goat Export Quality (Head)	-	1,325,000	1,650,000	1,560,000	638,978	18%	-5%	-
Goat Local Quality (Head)	585,000	1,125,000	730,000	1,075,000	440,291	-4%	47%	84%
Other Essential Items								
Charcoal 50kg	100,000	130,000	159,167	130,833	53,498	1%	-18%	31%
Cowpeas 1 kg	4,555	14,000	27,261	27,609	11,210	97%	1%	506%
Unskilled Labor Wage Rate	58,000	52,500	77,500	76,042	31,052	45%	-2%	31%
Firewood Bundle	39,600	3,000	5,583	5,250	-	75%	-6%	-87%
Local Sesame Oil 1 litre	20,200	80,000	60,750	64,283	26,235	-20%	6%	218%
Exchange Rate (Somali Shilling per USD)	16,724	31,850	31,292	30,250	12,292	-5%	-3%	81%
*Construction Materials								
Cement 50kg	-	-	261,875	232,858	-	-	-11%	-
Cooking Pot Aluminium 7 Litre	-	-	180,000	190,000	-	-	6%	-
Galvanised Iron Sheet Ga 26	-	-	116,396	110,083	-	-	-5%	-
Hollow Concrete Block 10cm x 20cm x 40cm	-	-	10,042	9,000	-	-	-10%	-
Non Collapsible Jerrycan 10 Litre	-	-	37,500	30,667	-	-	-18%	-
Plastic Tarpaulin 14m x 5 m	-	-	307,500	189,833	-	-	-38%	-
Roofing Nails 15Kg	-	-	512,000	516,333	-	-	1%	-
Timber 2in x 4in x 20ft	-	-	194,750	220,250	-	-	13%	-
Woven Dry Raised Blanket 150cm x 200cm	-	-	147,500	134,583	-	-	-9%	-
Terms of Trade								
Labour Wage (Daily)/ Cereal (Maize(Kg))	25	7	7	7	7	-5%	-6%	-72%
Local Goat (Head)/ Cereal (Maize(Kg))	249	155	69	97	99	-37%	41%	-61%
Price Indices								
Consumer Price Index	-	180	238	244	-	36%	3%	-
Purchasing Power Index	-	0.56	0.42	0.41	-	-26%	-2%	-

* Data has been collected for the past 9 months only

Figure 11: Bakara: Imported Commodity Prices compared to Exchange Rate

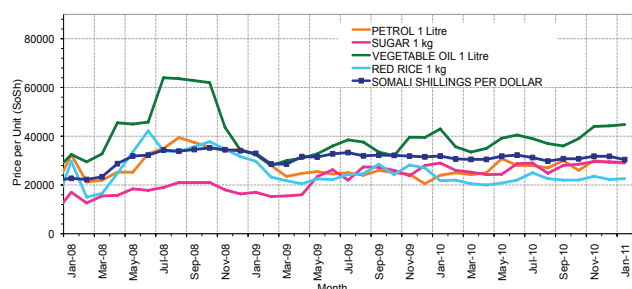
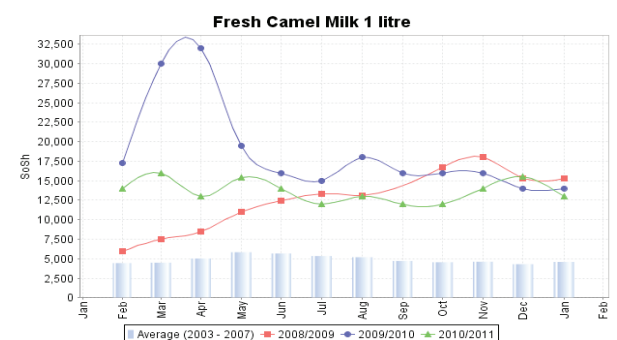
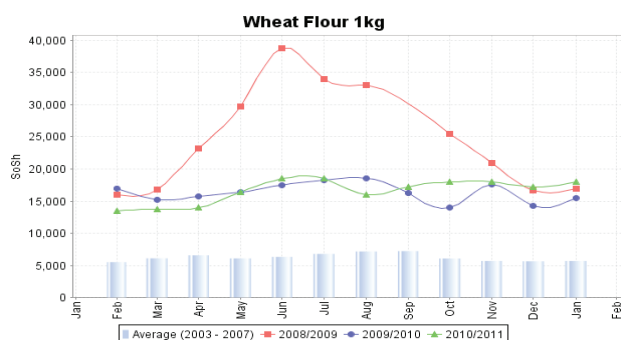
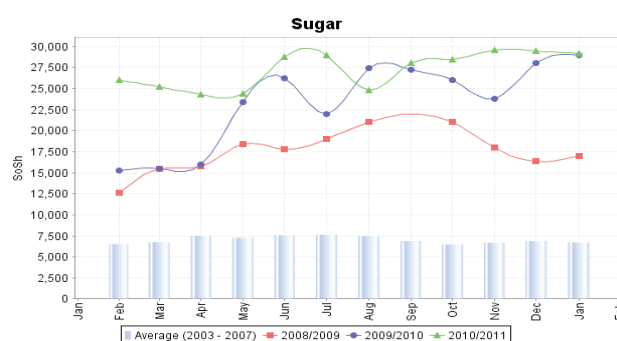
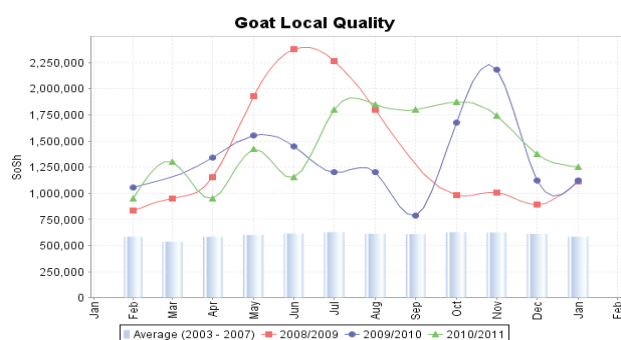
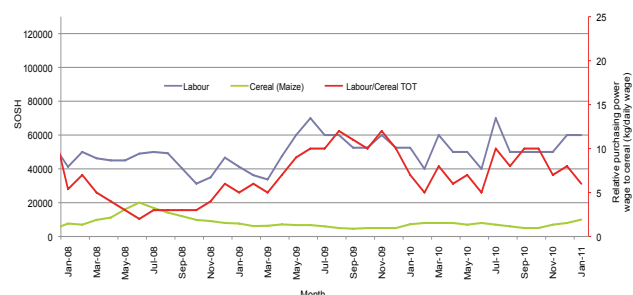


Figure 12: Bakara: Trends in Wage Rates, Staple Cereal Prices and Relative Purchasing Power



Regional analysis: Central Regions

Indicator	5-Year Average	Jan-10	Dec-10	Current Nominal Price	Current Real (Deflated) Price	% Change Same Month Previous Year	% Change Previous Month	% Change 5-year avg (2003-07)
Imported Commodities Prices								
Diesel 1 litre	9,953	28,900	33,250	35,060	12,994	21%	5%	252%
Imported Red Rice 1kg	7,290	26,750	27,100	27,840	10,297	4%	3%	282%
Petrol 1 litre	11,370	27,500	30,675	31,920	11,821	16%	4%	181%
Sugar	8,678	30,850	35,100	35,200	13,046	14%	0%	306%
Vegetable Oil 1 litre	16,325	52,250	52,900	54,850	20,384	5%	4%	236%
Wheat Flour 1kg	7,347	20,250	21,800	21,800	8,041	8%	0%	197%
Wheat Grain 1kg	6,000	14,000	15,667	17,133	6,299	22%	9%	186%
Cereal Prices								
Red Sorghum 1kg	4,203	10,550	15,500	16,588	6,095	57%	7%	295%
White Maize 1kg	4,416	14,250	14,500	18,275	6,725	28%	26%	314%
Livestock & Livestock Product Prices								
Camel Local Quality (Head)	2,189,083	8,768,750	8,075,000	7,787,500	2,908,231	-11%	-4%	256%
Cattle Local Quality (Head)	1,610,166	2,375,000	-	-	-	-	-	-
Fresh Camel Milk 1 litre	8,480	50,300	44,850	42,150	15,641	-16%	-6%	397%
Goat Export Quality (Head)	366,958	1,262,500	1,292,500	1,310,000	489,135	4%	1%	257%
Goat Local Quality (Head)	275,816	913,500	948,000	952,200	355,510	4%	0%	245%
Other Essential Items								
Charcoal 50kg	51,166	201,500	197,500	199,300	74,331	-1%	1%	290%
Cowpeas 1 kg	6,278	23,450	33,850	34,410	12,751	47%	2%	448%
Unskilled Labor Wage Rate	32,098	83,500	80,500	81,750	30,430	-2%	2%	155%
Firewood Bundle	3,618	22,475	32,250	32,000	11,851	42%	-1%	784%
Local Sesame Oil 1 litre	29,264	98,750	100,250	95,300	35,491	-3%	-5%	226%
Exchange Rate (Somali Shilling per USD)	16,925	31,360	31,000	30,848	11,421	-2%	0%	82%
*Construction Materials								
Cement 50kg	-	-	336,200	329,500	122,956	-	-2%	-
Cooking Pot Aluminium 7 Litre	-	-	453,500	492,000	183,643	-	8%	-
Galvanised Iron Sheet Ga 26	-	-	158,550	148,790	55,467	-	-6%	-
Hollow Concrete Block 10cm x 20cm x 40cm	-	-	16,750	16,750	6,155	-	0%	-
Non Collapsible Jerrycan 10 Litre	-	-	38,750	42,500	15,772	-	10%	-
Plastic Tarpaulin 14m x 5 m	-	-	344,000	306,000	114,179	-	-11%	-
Roofing Nails 15Kg	-	-	938,550	810,688	302,661	-	-14%	-
Timber 2in x 4in x 20ft	-	-	153,650	151,600	56,517	-	-1%	-
Woven Dry Raised Blanket 150cm x 200cm	-	-	170,250	174,400	65,032	-	2%	-
Terms of Trade								
Labour Wage (Daily)/ Cereal (Rice(Kg))	4	3	3	3	3	-6%	-1%	-33%
Local Goat (Head)/ Cereal (Rice(Kg))	38	34	35	34	35	0%	-2%	-10%
Camel (Head)/Cereal (Kg)	300	328	298	280	282	-15%	-6%	-7%
Price Indices								
Consumer Price Index	-	218	252	268	-	23%	6%	-
Purchasing Power Index	-	0.46	0.40	0.37	-	-19%	-6%	-

* Data has been collected for the past 9 months only

Figure 13: Imported commodity prices compared to exchange rates

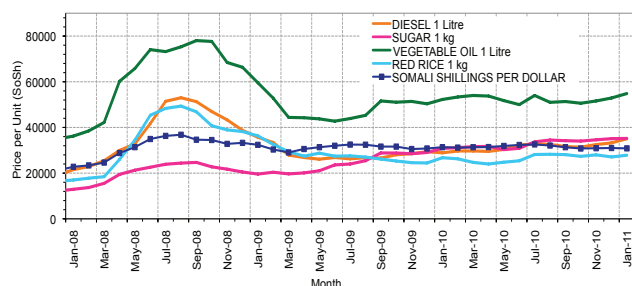
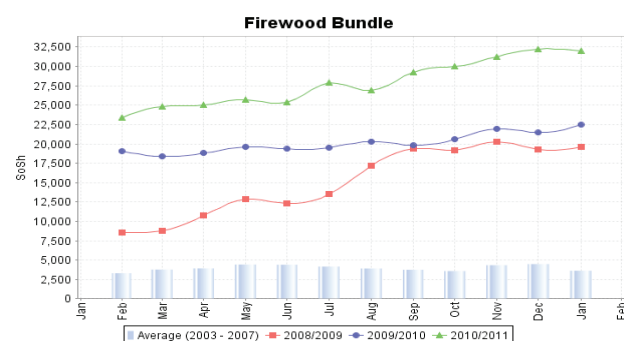
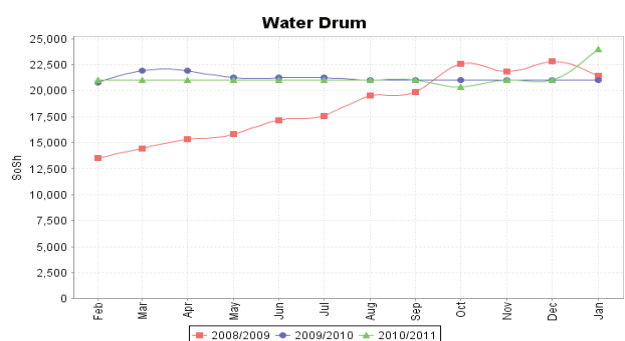
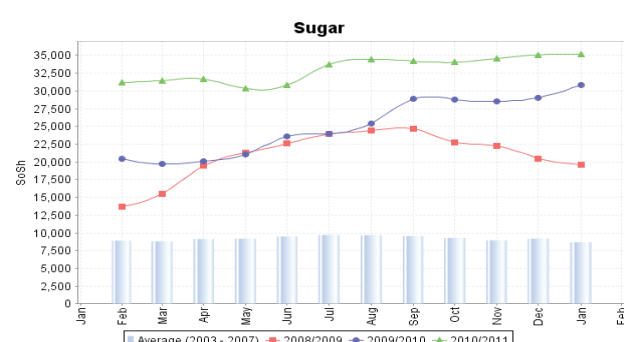
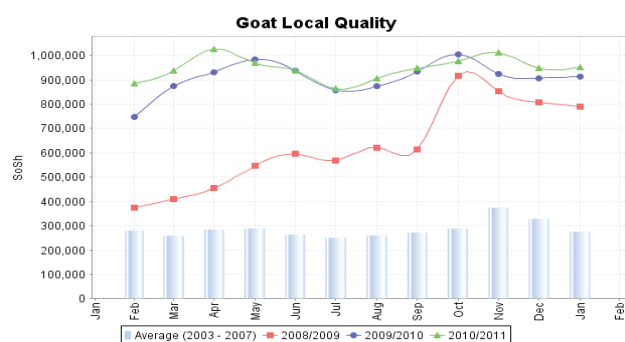
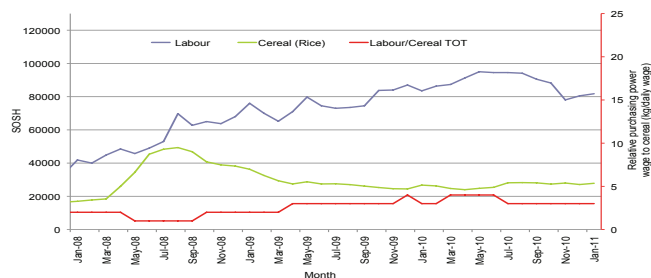


Figure 14: Trends in wage rates, staple cereal prices and relative purchasing power



Regional analysis: Northeast Regions

Indicator	5-Year Average	Jan-10	Dec-10	Current Nominal Price	Current Real (Deflated) Price	% Change Same Month Previous Year	% Change Previous Month	% Change 5-year avrg (2003-07)
Imported Commodities Prices								
Diesel 1 litre	8,220	26,063	31,188	33,188	14,205	27%	6%	304%
Imported Red Rice 1kg	6,073	19,000	21,525	22,313	9,518	17%	4%	267%
Petrol 1 litre	9,321	23,813	26,600	27,875	11,915	17%	5%	199%
Sugar	7,935	26,563	32,000	31,250	13,370	18%	-2%	294%
Vegetable Oil 1 litre	16,689	41,250	42,100	45,750	19,620	11%	9%	174%
Wheat Flour 1kg	6,477	17,250	19,875	19,750	8,413	14%	-1%	205%
Wheat Grain 1kg	7,312	27,000	27,700	28,500	12,184	6%	3%	290%
Cereal Prices								
Red Sorghum 1kg	6,955	15,750	14,800	17,938	7,632	14%	21%	158%
White Maize 1kg	5,768	16,083	18,333	20,000	8,521	24%	9%	247%
Livestock & Livestock Product Prices								
Camel Local Quality (Head)	3,141,875	11,012,500	12,775,000	12,362,500	5,328,564	12%	-3%	293%
Cattle Local Quality (Head)	1,741,666	4,875,000	5,750,000	6,500,000	2,801,624	33%	13%	273%
Fresh Camel Milk 1 litre	12,067	42,750	49,658	46,750	20,051	9%	-6%	287%
Goat Export Quality (Head)	404,751	1,268,333	1,329,667	1,342,500	578,564	6%	1%	232%
Goat Local Quality (Head)	372,326	1,071,875	1,212,500	1,211,875	522,260	13%	0%	225%
Other Essential Items								
Charcoal 50kg	68,691	283,125	389,250	380,938	164,097	35%	-2%	455%
Cowpeas 1 kg	9,994	30,667	31,600	33,000	14,124	8%	4%	230%
Unskilled Labor Wage Rate	43,583	104,375	110,000	110,000	47,314	5%	0%	152%
Firewood Bundle	6,746	31,563	36,875	33,125	14,178	5%	-10%	391%
Local Sesame Oil 1 litre	28,392	95,000	84,167	83,333	35,819	-12%	-1%	194%
Exchange Rate (Somali Shilling per USD)	16,400	31,875	31,700	31,125	13,316	-2%	-2%	90%
Construction Materials*								
Cement 50kg	-	-	226,738	229,250	98,715	-	1%	-
Cooking Pot Aluminium 7 Litre	-	-	320,000	337,500	145,374	-	5%	-
Galvanised Iron Sheet Ga 26	-	-	236,063	335,188	144,378	-	42%	-
Hollow Concrete Block 10cm x 20cm x 40cm	-	-	11,950	12,438	5,261	-	4%	-
Non Collapsible Jerrycan 10 Litre	-	-	40,000	37,500	16,064	-	-6%	-
Plastic Tarpaulin 14m x 5 m	-	-	201,750	207,500	89,340	-	3%	-
Roofing Nails 15Kg	-	-	421,438	440,875	189,932	-	5%	-
Timber 2in x 4in x 20ft	-	-	225,263	214,563	92,384	-	-5%	-
Woven Dry Raised Blanket 150cm x 200cm	-	-	275,375	270,938	116,684	-	-2%	-
Terms of Trade								
Labour Wage (Daily)/ Cereal (Rice(Kg))	7	5	5	5	5	-10%	-4%	-31%
Local Goat (Head)/ Cereal (Rice(Kg))	61	56	56	54	55	-4%	-4%	-11%
Price Indices								
Consumer Price Index	-	212	214	232	-	10%	8%	-
Purchasing Power Index	-	0.47	0.47	0.43	-	-9%	-8%	-

* Data has been collected for the past 9 months only

Figure 15: Imported commodity prices compared to exchange rates

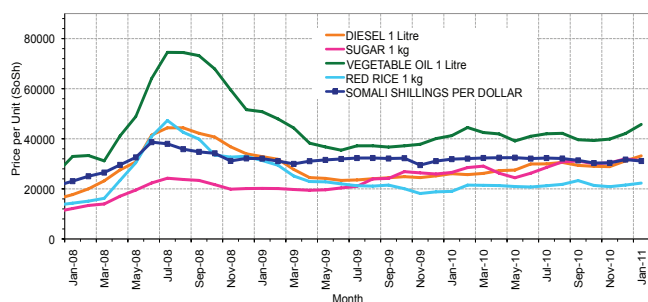
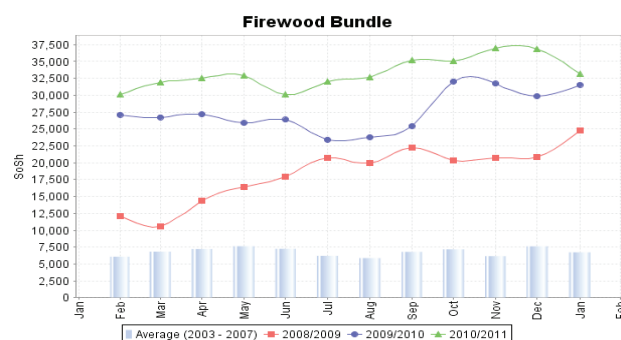
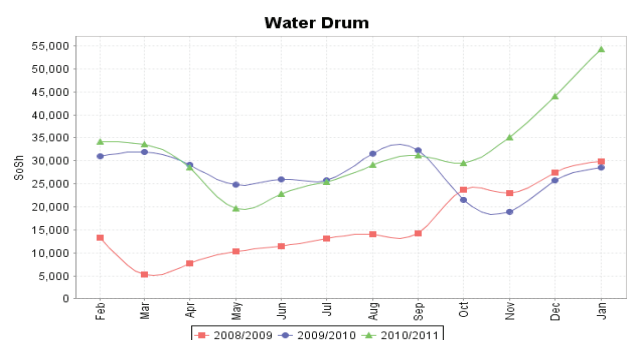
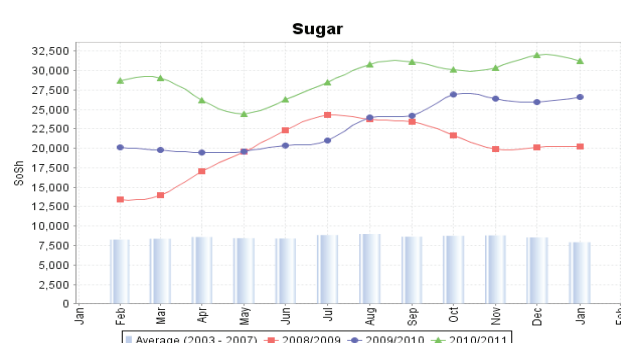
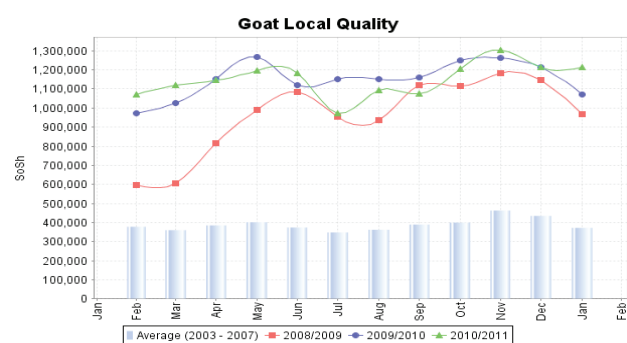
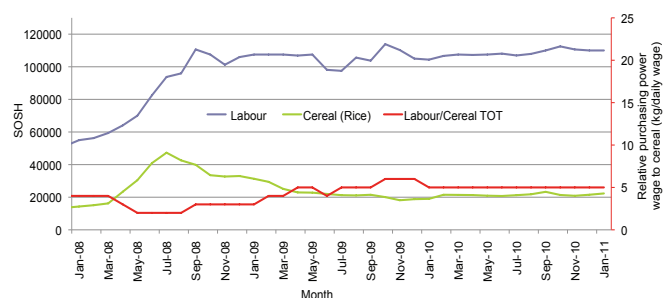


Figure 16: Trends in wage rates, staple cereal prices and relative purchasing power



Regional analysis: Northwest Regions

Indicator	5-Year Average	Jan-10	Dec-10	Current Nominal Price	Current Real (Deflated) Price	% Change Same Month Previous Year	% Change Previous Month	% Change 5-year avrg (2003-07)
Imported Commodities Prices								
Diesel 1 litre	3,382	5,200	5,513	5,206	4,727	0%	-6%	54%
Imported Red Rice 1kg	2,820	5,063	5,400	5,244	4,762	4%	-3%	86%
Petrol 1 litre	4,022	5,450	5,306	5,375	4,884	-1%	1%	34%
Sugar	3,230	6,288	6,025	5,713	5,197	-9%	-5%	77%
Vegetable Oil 1 litre	6,842	10,375	9,438	8,500	7,781	-18%	-10%	24%
Wheat Flour 1kg	2,699	4,878	3,675	3,975	3,586	-19%	8%	47%
Wheat Grain 1kg	1,865	2,567	2,333	2,267	2,002	-12%	-3%	22%
Cereal Prices								
White Sorghum 1kg	1,891	3,540	2,681	2,656	2,363	-25%	-1%	40%
Yellow Maize 1kg	1,728	3,666	2,483	2,500	2,218	-32%	1%	45%
Livestock & Livestock Product Prices								
Camel Local Quality (Head)	1,252,122	1,480,000	1,700,000	1,670,833	1,549,060	13%	-2%	33%
Cattle Local Quality (Head)	830,516	1,223,333	1,087,500	1,064,063	986,476	-13%	-2%	28%
Fresh Camel Milk 1 litre	4,294	5,656	4,338	4,788	4,339	-15%	10%	12%
Goat Export Quality (Head)	175,637	278,000	300,250	280,500	259,974	1%	-7%	60%
Goat Local Quality (Head)	140,403	202,500	226,563	223,125	206,777	10%	-2%	59%
Other Essential Items								
Charcoal 50kg	17,851	31,500	35,250	34,875	32,235	11%	-1%	95%
Cowpeas 1 kg	4,434	10,650	9,667	7,375	6,738	-31%	-24%	66%
Unskilled Labor Wage Rate	28,582	33,063	30,000	28,750	26,556	-13%	-4%	1%
Firewood Bundle	3,855	3,000	2,333	1,600	1,383	-47%	-31%	-58%
Local Sesame Oil 1 litre	16,650	28,583	26,333	20,563	18,966	-28%	-22%	24%
Exchange Rate (Somaliland Shilling per USD)	7,600	-	-	-	-	-	-	-
Construction Materials								
Cement 50kg	-	-	52,038	43,313	40,059	-	-17%	-
Cooking Pot Aluminium 7 Litre	-	-	77,219	91,000	84,273	-	18%	-
Galvanised Iron Sheet Ga 26	-	-	52,200	55,000	50,895	-	5%	-
Hollow Concrete Block 10cm x 20cm x 40cm	-	-	3,075	3,375	3,029	-	10%	-
Non Collapsible Jerrycan 10 Litre	-	-	6,375	6,825	6,228	-	7%	-
Plastic Tarpaulin 14m x 5 m	-	-	66,500	57,375	53,097	-	-14%	-
Roofing Nails 15Kg	-	-	121,375	151,500	140,368	-	25%	-
Timber 2in x 4in x 20ft	-	-	118,000	130,750	121,129	-	11%	-
Woven Dry Raised Blanket 150cm x 200cm	-	-	63,313	69,375	64,223	-	10%	-
Terms of Trade								
Labour Wage (Daily)/ Cereal (Rice(Kg))	10	7	6	5	6	-16%	-1%	-46%
Local Goat (Head)/ Cereal (Rice(Kg))	50	40	42	43	43	6%	1%	-15%
Price Indices								
Consumer Price Index	-	122	108	108	-	-12%	0%	-
Purchasing Power Index	-	0.82	0.93	0.93	-	13%	0%	-

* Data has been collected for the past 9 months only

Figure 17: Imported commodity prices compared to exchange rates

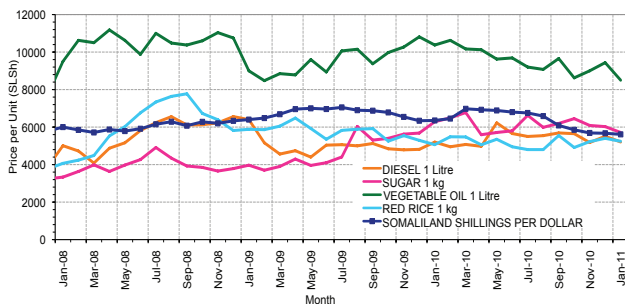
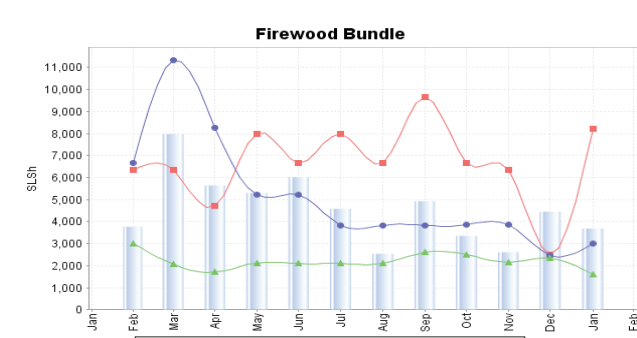
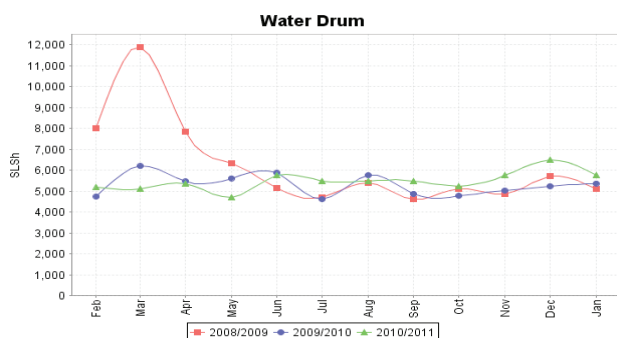
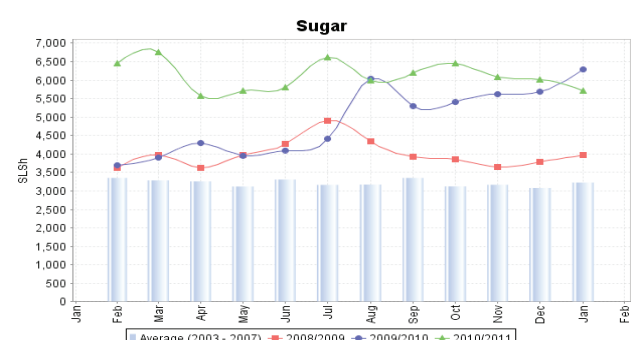
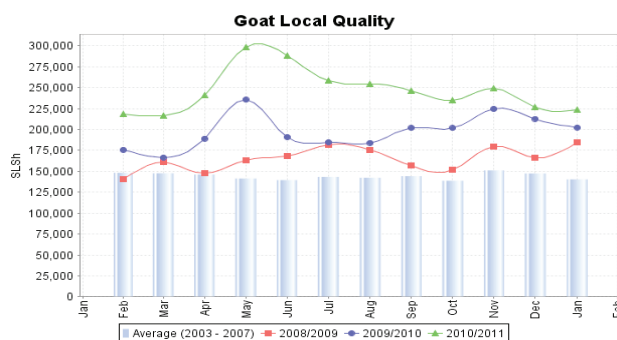
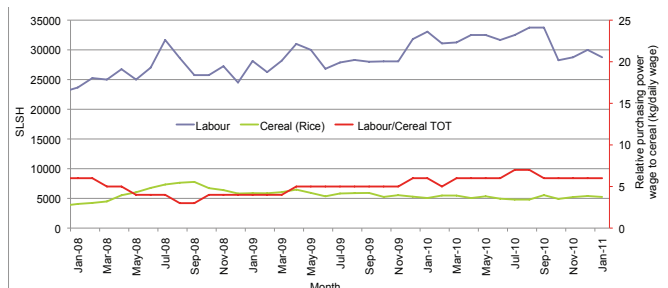


Figure 18: Trends in wage rates, staple cereal prices and relative purchasing power



Trends in Livestock Exports

Table 1: Berbera Livestock Exports (Number of Heads)

	1994	1995	1996	1997	1998	1999	2000	2001	2002	2003	2004	2005	2006	2007	2008	2009	2010	2011
Shoats	1,572,656	2,683,597	2,376,646	2,814,495	957,224	2,048,136	1,601,083	51,546	341,711	563,107	859,404	1,023,795	1,017,242	1,350,054	1,219,519	1,556,003	2,584,810	70,967
Cattle	173,400	167,128	65,127	66,939	92,213	89,967	63,263	20,973	37,547	84,312	131,852	148,151	85,631	88,143	80,051	88,005	123,803	13,532
Camel	38,553	21,993	42,801	50,587	11,663	37,430	16,984	3,473	18,864	21,874	5,147	5,069	22,810	14,245	26,515	20,206	84,097	10,503

Figure 19: Berbera Livestock Exports (Number of Heads)

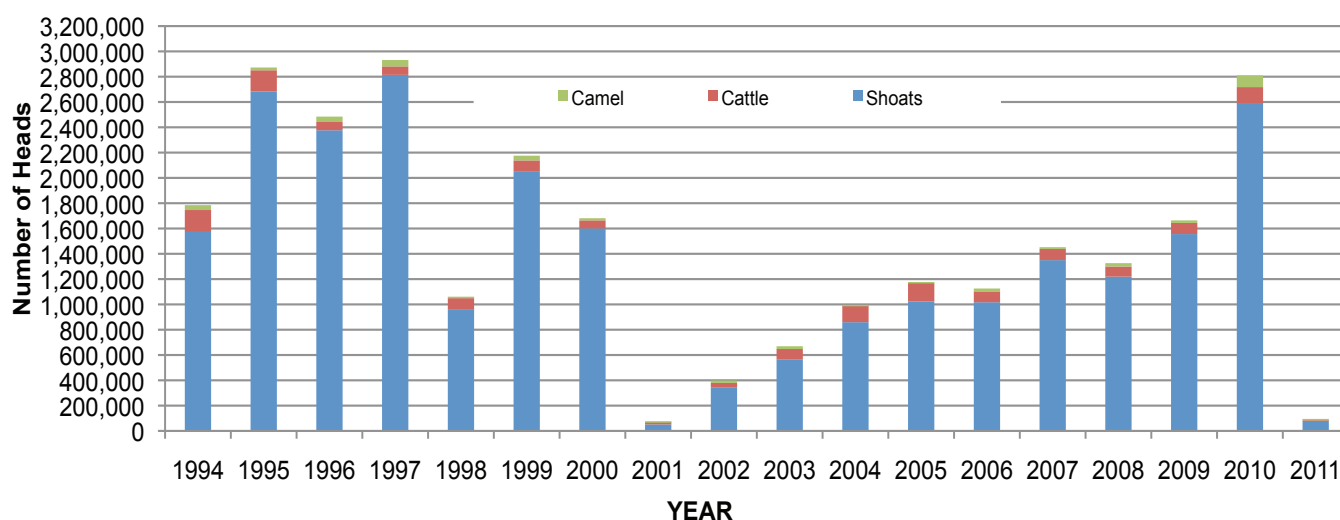


Table 2: Bossaso Livestock Exports (Number of Heads)

	1994	1995	1996	1997	1998	1999	2000	2001	2002	2003	2004	2005	2006	2007	2008	2009	2010	2011
Shoats	344,000	524,346	614,407	494,320	517,020	633,669	571,455	548,853	1,412,450	1,483,409	1,166,480	1,594,859	1,777,283	1,522,855	1,236,775	1,159,454	1,334,478	64,389
Cattle	1,450	8,795	15,335	17,831	29,492	36,586	27,604	42,248	53,313	71,328	79,994	91,910	104,595	89,190	78,046	67,385	103,808	7,445
Camel	5,397	8,392	20,462	14,599	3,938	15,544	8,177	1,950	9,720	4,259	2,488	26,109	33,724	27,580	27,639	15,331	36,865	4,890

Figure 20: Bossaso Livestock Exports (Number of Heads)

