

Highlights

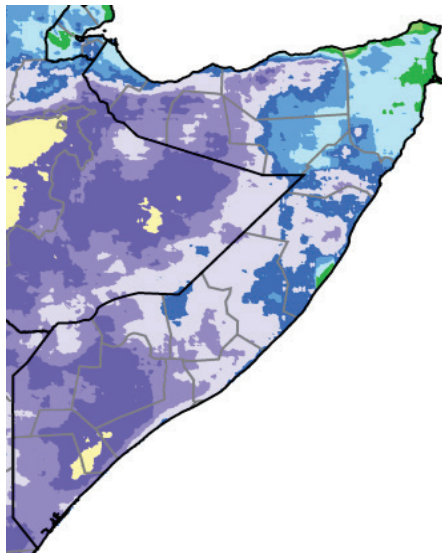
The 2021 *Gu* (March/April-June) season rainfall significantly decreased during the month of June; most stations recorded no rainfall in all the dekads.

Based on data from rain gauge readings, no station recorded 100 or more millimeters in the month of June 2021. Stations which recorded at least 20mm of rainfall includes Elafweyn (48.5mm), Wajaale (41.5mm), Diinsor (34.1mm), Aburin (34mm), Jamame (33mm), Wanleweyne (32mm), Malawle (27mm), Hargeisa (25.5mm), and Bullo burti (22mm) – Table 1. Cumulative rainfall from 1 March to 05 July 2021 remained below average in most regions of southern Somalia, Galgadud in central regions and Awdal, W. Galbeed and Bari regions in northern Somalia - Map 2.

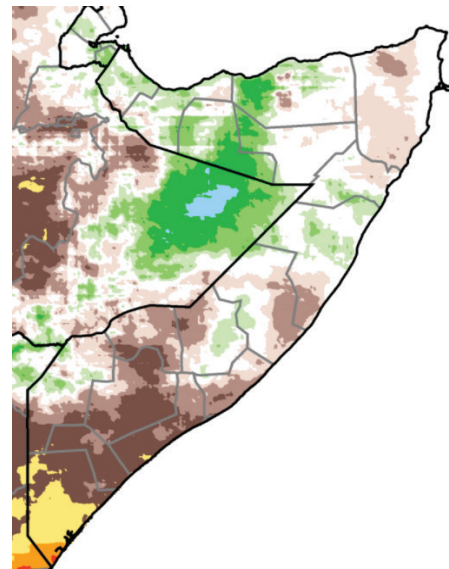
Rainfall ended earlier than normal in 2021 *Gu* rainy season in most regions and the current forecast through 20 July still indicates very little to no rainfall. Cumulatively, total rainfall amounts since 1 March, including forecasts through 20 July 2021, are expected to remain below average with large rainfall deficits in most parts of southern Somalia and in parts of Galgadud in central regions and Awdal, W. Galbeed and Bari in northern regions (Maps 3 and 4).

Reflecting early cessation of *Gu* rainy season in most parts of the country in June, vegetation cover measured through the Normalized Difference Vegetation Index (NDVI) is slowly deteriorating in most parts of the country (Maps 5-8). According to the index, average vegetation cover was observed in northwest part of the country with below average vegetation being observed in the coastal parts of northeast and central regions and several parts of southern Somalia as of the last dekad of June and first dekad of July (Map 7 - 8).

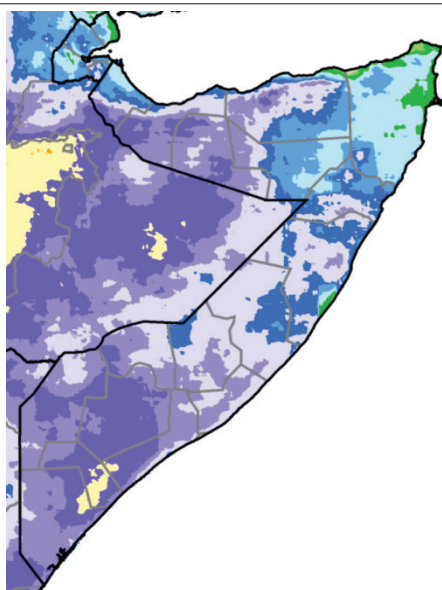
Map 1: Rainfall Total (mm): 1 Mar to 05 Jul



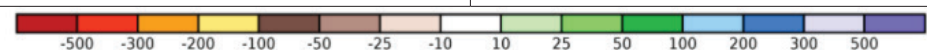
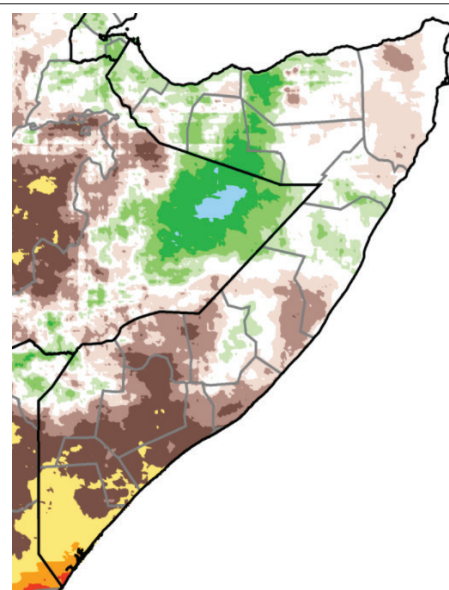
Map 2: Rainfall Anomaly (mm): 1 Mar to 05 Jul



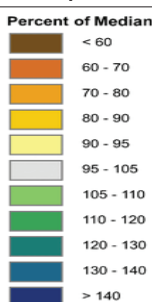
Map 3: Rainfall Total (mm): 1 Mar to 05 Jul
(includes forecast data for 06 to 20 Jul)



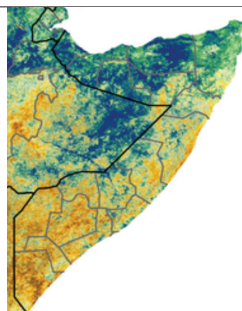
Map 4: Rainfall Anomaly (mm): 1 Mar to 05 Jul
(includes forecast data for 06 to 20 Jul)



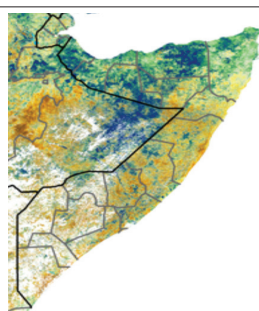
Legend for NDVI
Maps 5-8



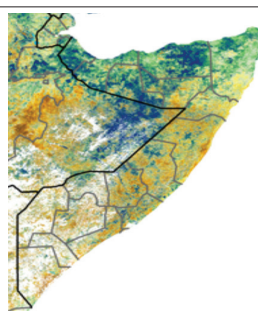
Map 5: NDVI Percent of Median:
1-10 Jun



Map 6: NDVI Percent of Median:
11-20 Jun



Map 7: NDVI Percent of Median:
21-30 Jun



Map 8: NDVI Percent of Median:
1-10 Jul



Monthly rain gauge data

The reduction in rainfall amounts both inside Somalia and in the upper catchments of the Shabelle and Juba rivers in the Ethiopian highlands are reflected in Shabelle and Juba river levels which remained below Moderate flood-risk except in Dollow where the Juba River briefly surpassed Moderate flood-risk levels around May 9. Similarly, in Belet-weyne, Jowhar/Mahday and Balad districts, Shabelle River levels surpassed Moderate and High flood-risk levels between May 11 and May 17, reaching Bank Full on May 25, before starting to decline the following day. As a result, some flooding and related population displacements were reported in Belet-weyne town. Damage to crops was also reported in rural Beletweyne and several riverine villages in Middle Shabelle region. As at June 15, all stations along Shabelle and Juba rivers are below Moderate flood-risk levels. With little to no rains forecast, this is likely to continue through July 2021.

Intensified rainfall between late April and early May improved water availability, browse and pasture availability. However, this improvement may not be adequate to support livestock through the forthcoming and mostly dry *Hagaa* (July-September) season as the situation has started deterioration following early cessation of Gu 2021 rains. With very little or no forecast rainfall in through late July, the residual moisture in the soil is also not adequate to support crop growth and development through the remainder of the *Gu* cropping season. As a result, the combination of delayed and erratic distribution and early cessation of current season rainfall, the overall 2021 *Gu* season cereal crop production is likely to be 20-40 percent below average.

The latest FAO Desert Locust Watch (2 July 2021) reports that numerous hopper bands have formed in northwest Somalia. Infestations are likely to continue further east to Puntland, but some areas are not accessible. Although substantial control operations are underway, new swarms are increasing and are likely to persist in northern Somalia in the coming days. This could threaten *Gu* season crop harvest prospects as well as availability of pasture during the *Hagaa* season.

Table 1: Observed rain gauge data compared to Short term averages - STA (June 2021)

Northern regions

Station Name	Region	dek 1	dek 2	dek 3	Jun-21	STA
Borama	Awdal	0.0	0.0	0.0	0.0	25.7
Qulenjeed	Awdal	0.0	0.0	0.0	0.0	18.0
Gebilley	Wogooyi Galbeed	0.0	0.0	16.0	16.0	48.3
Malawle	Wogooyi Galbeed	0.0	27.0	0.0	27.0	33.9
Wajaale	Wogooyi Galbeed	14.0	22.0	5.5	41.5	49.8
Hargeisa	Wogooyi Galbeed	4.0	6.5	15.0	25.5	30.3
Daraweyne	Wogooyi Galbeed	0.0	0.0	7.0	7.0	24.7
Cadaadley	Wogooyi Galbeed	0.0	0.0	0.0	0.0	30.8
Dilla	Wogooyi Galbeed	0.0	0.0	18.0	18.0	39.1
Aburin	Wogooyi Galbeed	2.0	12.5	19.5	34.0	39.1
Dhubato	Wogooyi Galbeed	0.0	0.0	0.0	0.0	26.7
Baligubable	Wogooyi Galbeed	0.0	0.0	0.0	0.0	47.3
Berbera	Wogooyi Galbeed	0.0	0.0	0.0	0.0	0.0
Burao	Togdheer	0.0	0.0	0.0	0.0	22.1
Sheikh	Togdheer	0.0	0.0	0.0	0.0	37.5
Odweyne	Togdheer	0.0	0.0	0.0	0.0	35.5
Buadodle	Togdheer	0.0	0.0	0.0	0.0	8.2
Eerigavo	Sanaag	0.0	0.0	0.0	0.0	37.5
Elafweyn	Sanaag	48.5	0.0	0.0	48.5	28.8
Caynabo	Sool	0.0	0.0	0.0	0.0	11.8
xudun	Sool	0.0	0.0	0.0	0.0	12.3
Taleex	Sool	0.0	0.0	0.0	0.0	5.1
Las Aanod	Sool	0.0	0.0	0.0	0.0	1.0
Bossasso	Bari	0.0	0.0	0.0	0.0	0.0
Qardo	Bari	0.0	0.0	0.0	0.0	3.6
Dangoroyo	Bari	0.0	0.0	0.0	0.0	0.5
Ballidhin	Bari	0.0	0.0	0.0	0.0	0.0
Alula	Bari	0.0	0.0	0.0	0.0	0.0
Bandarbeyla	Bari	0.0	0.0	0.0	0.0	1.0
Iskushuban	Bari	7.0	0.0	0.0	7.0	1.5
Garowe	Nugaal	0.0	0.0	0.0	0.0	0.5
Eyl	Nugaal	0.0	0.0	0.0	0.0	0.0
Burtnile	Nugaal	0.0	0.0	0.0	0.0	2.1
Galdogob	Mudug	0.0	0.0	0.0	0.0	4.6
Jarriban	Mudug	0.0	0.0	0.0	0.0	2.6
Galkayo	Mudug	2.0	0.0	0.0	2.0	5.7

Southern regions

Station_Name	Region	dek 1	dek 2	dek 3	Jun-21	STA
Hudur	Bakool	0.0	0.0	1.0	1.0	0.0
Elbarde	Bakool	0.0	0.0	0.0	0.0	0.0
Baidoa	Bay	0.5	2.5	4.0	7.0	19.5
Diinsor	Bay	12.4	7.6	14.1	34.1	14.9
Bardaale	Bay	1.0	1.0	0.0	2.0	14.9
BurHakaba	Bay	0.0	0.0	0.0	0.0	11.8
Luuq	Gedo	0.0	0.0	0.0	0.0	2.1
Bardheere	Gedo	0.0	0.0	0.0	0.0	9.8
Belet weyne	Hiraan	0.0	0.0	0.0	0.0	14.4
Bulo burti	Hiraan	22.0	0.0	0.0	22.0	12.3
Mataban	Hiraan	0.0	0.0	0.0	0.0	0.0
Wanleweyne	Lower Shabelle	32.0	0.0	0.0	32.0	0.0
Mogadishu	Banadir	0.0	0.0	0.0	0.0	85.3
Bualle	Middle juba	0.0	3.0	2.5	5.5	59.6
Jowhar	Middle Shabelle	0.0	0.0	3.0	3.0	40.1
Jamame	Lower Juba	5.5	3.5	24.0	33.0	109.4

Source of satellite Images used in this analysis are the Climate Hazard Center at the University of California Santa Barbara (for rainfall) and FEWS NET (for NDVI).