

This update summarizes analysis of monthly data from the Somalia Early Warning-Early Action (EW-EA) database and dashboard. The EW-EA dashboard contains district-level data on risk factors related to food security and nutrition across Somalia, including trends. The EW-EA dashboard covers the period since January 2015. At present, the EW-EA dashboard includes six sets of indicators: (1) climate, (2) market, (3) nutrition, (4) health, (5) population movement (displacement), and (6) insecurity. Thresholds were established for each of the EW-EA indicators on the basis of which the monthly data values are classified into Normal, Alert and Alarm. All of the EW-EA indicators and data are presented here in the form of an interactive EW-EA database and dashboard.

Overall Trends

The number of food security and nutrition related risk factors in Alarm phase has been steadily increasing since the beginning of 2021. While the bulk of the increase is related to worsening market conditions, other factors (climate, nutrition and insecurity) have also worsened since late 2021. Since reaching an all-time high (442) in August 2022, the total number of risk factors declined slightly (to 423) in September 2022, mainly as a result of stabilizing market conditions albeit at abnormally high levels and improved climate in parts of Somalia and reduced population displacement in September, possibly due to scaled-up humanitarian assistance. Health, nutrition and security conditions continued to deteriorate between July and September 2022 (Figures 1, Figure 3 and Table 2).

Figure 1: Trends in the Number of Risk Factors in Alarm Phase, Jan 2015-Sep 2022

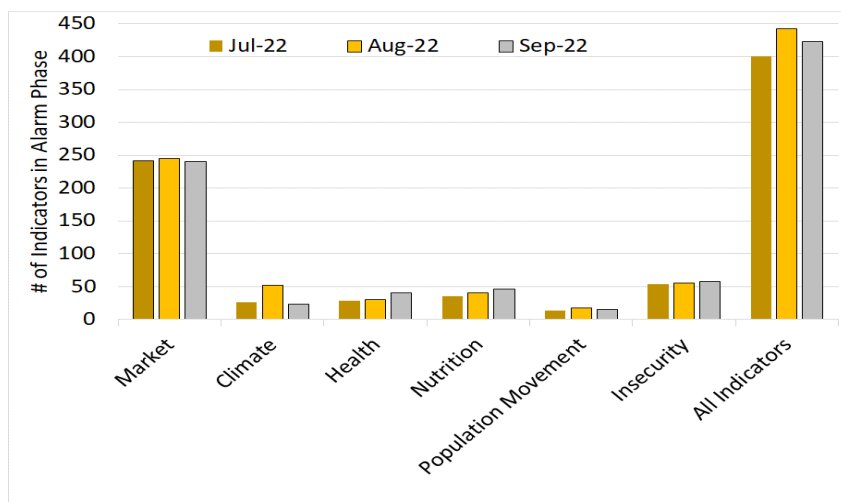


Figure 2: # of Risk-Factors in Alarm Phase at District Level, September 2022

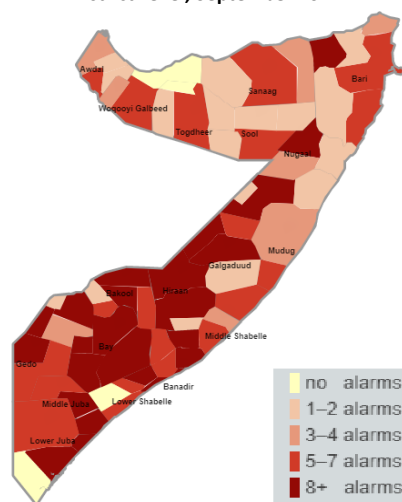
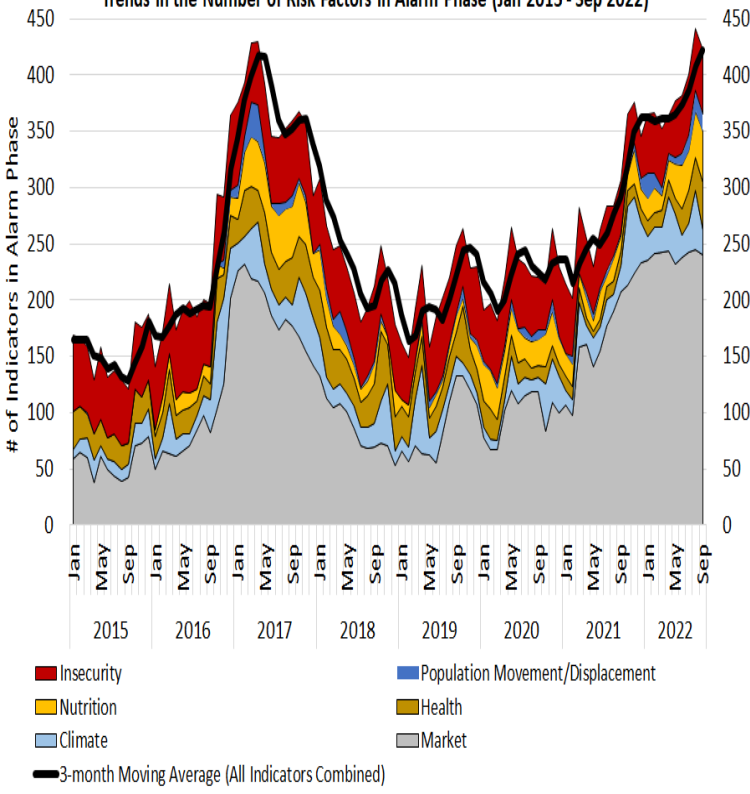


Figure 3: Somalia Early Warning-Early Action Dashboard Time Series Chart: Trends in the Number of Risk Factors in Alarm Phase (Jan 2015 - Sep 2022)



September 2022 Highlights and Prospects for the Coming Months

Districts with the highest number (≥ 10) of food security and nutrition related risk factors (indicators) in Alarm Phase in September 2022 were: Belet Weyne (Hiraan), Qoryooley (L. Shabelle), Kismaayo (L. Juba), Baydhaba (Bay), Mogadishu (Banadir), Jowhar (M. Shabelle), Qansax Dheere (Bay), Belet Xaawo (Gedo), Xudur (Bakool), Diinsoor (Bay) and Garoowe (Nugaal). These are mostly driven by abnormally high water and food prices, low livestock-to-cereal and wage labor-to-cereal terms of trade, high cost of minimum expenditure basket, atypically high admission of acutely malnourished children for treatment, measles outbreak, continued insecurity and population displacement – Figure 2 and Table 1.

The total number of indicators in Alarm phase is likely to remain high at least through the end of the year due to multiple factors, including anticipated below average October to December Deyr season rainfall, persistent unfavorable market conditions and continued insecurity due to a spike in insurgent activities and military offensives against insurgents. AWD/cholera and measles cases and case admissions of acutely malnourished children are also likely to remain abnormally high in the coming months.

Somalia Early Warning-Early Action Dashboard, September 2022

Table 1: Number of Risk Factors (EW-EA Indicators) in Alarm Phase by District, September 2022

S/N	Regions	Districts	1. Climate		2. Market					3. Nutrition		4. Health			5. Insecurity		6. Population Movement		Total Number of Alarms			
			Rainfall	Vegetation cover (NDVI)	Price of water	Sorghum	Maize	Red Rice	Local Goat	Wage labor	TOT (goat to cereals)	TOT (wage to cereals)	Cost of Minimum Basket	New Admissions (GAM)	Measles Cases	AWD/ cholera cases	AWD/ Cholera deaths	# of Incidents		# of Fatalities	Arrivals	Departures
1	Awdal	Baki																		1		
2	Awdal	Borama			•	•	•	•		•		•								7		
3	Awdal	Lughaye																		1		
4	Awdal	Zeylac				•														4		
5	W. Galbeed	Berbera																		0		
6	W. Galbeed	Gebiley			•	•		•												4		
7	W. Galbeed	Hargeysa				•	•	•	•			•				•	•			7		
8	Togdheer	Burco			•	•	•		•			•								7		
9	Togdheer	Buuhoodle											•							2		
10	Togdheer	Owdweyne											•							1		
11	Togdheer	Sheikh																		0		
12	Sool	Caynabo																		1		
13	Sool	Laas Caanood			•				•			•		•						6		
14	Sool	Taleex																		2		
15	Sool	Xudun																		2		
16	Sanaag	Ceel Afweyn																		2		
17	Sanaag	Ceerigaabo			•					•										5		
18	Sanaag	Laasqoray														•	•			3		
19	Bari	Bandarbeyla			•							•		•						5		
20	Bari	Bossaso			•	•			•			•		•		•	•			8		
21	Bari	Caluula			•							•		•						4		
22	Bari	Iskushuban			•							•		•						5		
23	Bari	Qandala	•																	2		
24	Bari	Qardho																		2		
25	Nugaal	Burtinle																		3		
26	Nugaal	Eyl																		2		
27	Nugaal	Garooowe			•	•	•	•		•						•	•			10		
28	Mudug	Gaalkacyo			•	•	•	•		•				•		•	•			9		
29	Mudug	Galdogob														•	•			2		
30	Mudug	Hobyo				•	•	•							•					4		
31	Mudug	Jariiban																		1		
32	Mudug	Xarardheere							•											5		
33	Galgaduud	Cabudwaaq			•	•	•	•								•	•			8		
34	Galgaduud	Cadaado														•	•		•	6		
35	Galgaduud	Ceel Buur																		1		
36	Galgaduud	Ceel Dheer				•			•							•	•			7		
37	Galgaduud	Dhuusamarreeb				•	•	•				•		•		•	•		•	9		
38	Hiraan	Belet Weyne				•	•	•	•			•		•		•	•	•	•	13		
39	Hiraan	Bulo Burto				•	•	•				•		•		•	•	•	•	9		
40	Hiraan	Jalalaqsi						•	•											2		
41	M. Shabelle	Balcad				•	•	•	•		•			•		•	•			8		
42	M. Shabelle	Cadale				•	•	•								•	•			5		
43	M. Shabelle	Jowhar				•	•	•	•		•		•		•	•	•			11		
44	L. Shabelle	Afgooye				•	•	•						•		•	•			7		
45	L. Shabelle	Baraawe						•	•							•	•			7		
46	L. Shabelle	Kurtunwaarey				•	•	•	•	•	•									6		
47	L. Shabelle	Marka			•	•	•	•	•		•			•						8		
48	L. Shabelle	Qoryooley			•	•	•	•	•	•		•		•		•	•			13		
49	L. Shabelle	Sablaale																		0		
50	L. Shabelle	Wanla Weyn				•	•	•	•		•									6		
51	Bay	Baydhaba			•	•	•	•	•		•		•		•	•		•		12		
52	Bay	Buur Hakaba				•	•	•	•	•		•		•						9		
53	Bay	Diinsoor				•	•	•	•		•					•	•			10		
54	Bay	Qansax Dheere			•	•	•	•	•		•			•					•	10		
55	Bakool	Ceel Barde				•										•	•			9		
56	Bakool	Rab Dhuure																		2		
57	Bakool	Tayeeglow				•	•	•	•											7		
58	Bakool	Waaajid				•	•	•	•											6		
59	Bakool	Xudur			•	•	•	•		•						•	•			10		
60	Gedo	Baardheere				•	•	•		•				•						7		
61	Gedo	Belet Xaawo				•	•	•	•		•			•		•	•			10		
62	Gedo	Ceel Waaq			•	•	•	•		•				•						8		
63	Gedo	Doolow														•	•			2		
64	Gedo	Garbahaarey														•	•			4		
65	Gedo	Luuq				•	•	•	•		•			•						9		
66	M. Juba	Bu'aale			•	•	•	•	•		•									8		
67	M. Juba	Jilib			•	•	•	•	•		•					•	•			9		
68	M. Juba	Saakow				•	•	•	•		•									7		
69	M. Shabelle	Adan Yabaal			•															3		
70	L. Juba	Afmadow							•					•		•	•			6		
71	L. Juba	Badhaadhe																		0		
72	L. Juba	Jamaame					•	•		•						•	•		•	8		
73	L. Juba	Kismaayo		•			•	•	•	•		•		•		•	•	•	•	13		
74	Banadir	Mogadishu				•	•	•	•		•			•		•	•	•	•	11		
		TOTAL	1	1	21	36	38	55	15	5	32	19	40	46	40	1	0	29	29	8	7	423

Table 2: Trends in the Number of Risk Factors (EW-EA Indicators) in Alarm Phase by District, July-September 2022

S/N	Regions	Districts	# of Indicators in Alarm Phase in September 2022						# of Indicators in Alarm Phase		
			Climate	Market	Health	Nutrition	Population Movement	Insecurity	Sep 2022	Aug 2022	Jul 2022
1	Hiraan	Belet Weyne	0	7	1	1	2	2	13	13	10
2	L. Shabelle	Qoryooley	1	8	1	1	0	2	13	11	9
3	L. Juba	Kismaayo	1	5	2	1	2	2	13	10	8
4	Bay	Baydhaba	1	6	1	1	1	2	12	14	11
5	Banadir	Mogadishu	0	6	1	1	1	2	11	11	11
6	M. Shabelle	Jowhar	0	7	1	1	0	2	11	10	10
7	Bay	Qansax Dheere	1	7	1	0	1	0	10	12	10
8	Gedo	Belet Xaawo	0	6	1	1	0	2	10	10	9
9	Bakool	Xudur	1	5	1	1	0	2	10	9	11
10	Bay	Diinsoor	0	6	0	1	1	2	10	9	8
11	Nugaal	Garoowe	1	5	1	1	0	2	10	7	6
12	Gedo	Luuq	0	7	1	1	0	0	9	12	11
13	Bay	Buur Hakaba	0	7	1	1	0	0	9	11	11
14	Hiraan	Bulo Burto	0	4	1	0	2	2	9	11	8
15	Galgaduud	Dhuusamarreeb	0	4	1	1	1	2	9	10	8
16	Bakool	Ceel Barde	0	4	1	1	1	2	9	9	11
17	Mudug	Gaalkacyo	1	5	1	0	0	2	9	9	8
18	M. Juba	Jilib	1	6	0	0	0	2	9	8	5
19	M. Shabelle	Balcad	0	5	1	0	0	2	8	10	9
20	L. Shabelle	Marka	1	5	1	1	0	0	8	10	9
21	Galgaduud	Cabudwaaq	1	4	1	0	0	2	8	9	9
22	M. Juba	Bu'aale	1	7	0	0	0	0	8	8	8
23	Gedo	Ceel Waaq	1	5	1	1	0	0	8	8	7
24	L. Juba	Jamaame	0	5	0	0	1	2	8	7	9
25	Bari	Bossaso	1	3	1	1	0	2	8	5	10
26	Gedo	Baardheere	0	6	1	0	0	0	7	12	10
27	Togdheer	Burco	1	5	0	1	0	0	7	9	7
28	W. Galbeed	Hargeysa	0	4	0	1	0	2	7	8	7
29	Awdal	Borama	1	5	0	1	0	0	7	7	7
30	L. Shabelle	Afgooye	0	4	1	0	0	2	7	7	7
31	L. Shabelle	Baraawe	0	3	1	1	0	2	7	7	7
32	M. Juba	Saakow	0	7	0	0	0	0	7	7	7
33	Bakool	Tayeeglow	0	6	0	1	0	0	7	7	5
34	Galgaduud	Ceel Dheer	0	5	0	0	0	2	7	5	4
35	L. Juba	Afmadow	0	2	1	1	0	2	6	10	6
36	L. Shabelle	Wanla Weyn	0	6	0	0	0	0	6	8	7
37	L. Shabelle	Kurtunwaarey	0	6	0	0	0	0	6	7	8
38	Bakool	Waajid	0	4	1	1	0	0	6	7	8
39	Sool	Laas Caanood	1	3	1	1	0	0	6	6	4
40	Galgaduud	Cadaado	0	0	1	1	2	2	6	5	1
41	Sanaag	Ceerigaabo	1	3	0	1	0	0	5	6	5
42	Mudug	Xarardheere	0	5	0	0	0	0	5	6	5
43	Bari	Iskushuban	1	2	1	1	0	0	5	4	5
44	M. Shabelle	Cadale	0	3	0	0	0	2	5	4	5
45	Bari	Bandarbeyla	1	2	1	1	0	0	5	4	4
46	Mudug	Hobyo	0	3	1	0	0	0	4	5	4
47	W. Galbeed	Gebiley	1	2	0	1	0	0	4	3	3
48	Bari	Caluula	1	2	1	0	0	0	4	3	3
49	Gedo	Garbahaarey	0	0	1	1	0	2	4	3	3
50	Awdal	Zeylac	0	3	0	1	0	0	4	3	2
51	M. Shabelle	Adan Yabaal	1	2	0	0	0	0	3	3	3
52	Nugaal	Burtinle	0	1	1	1	0	0	3	2	1
53	Sanaag	Laasqoray	0	0	1	0	0	2	3	1	0
54	Hiraan	Jalalaqsi	0	2	0	0	0	0	2	9	5
55	Bakool	Rab Dhuure	0	0	1	1	0	0	2	3	6
56	Gedo	Doolow	0	0	1	1	0	0	2	3	3
57	Nugaal	Eyl	0	1	0	1	0	0	2	3	1
58	Sool	Xudun	0	1	0	1	0	0	2	2	2
59	Bari	Qardho	0	0	1	1	0	0	2	1	2
60	Mudug	Galdogob	0	0	0	0	0	2	2	1	2
61	Togdheer	Buhoodle	0	0	1	1	0	0	2	1	1
62	Sool	Taleex	0	0	1	1	0	0	2	1	1
63	Sanaag	Ceel Afweyn	0	1	0	1	0	0	2	1	1
64	Bari	Qandala	1	0	0	1	0	0	2	1	1
65	Galgaduud	Ceel Buur	0	0	0	1	0	0	1	4	3
66	Mudug	Jariiban	0	1	0	0	0	0	1	2	2
67	Awdal	Lughaye	0	1	0	0	0	0	1	2	1
68	Togdheer	Owdweyne	0	0	0	1	0	0	1	1	1
69	Awdal	Baki	0	0	0	1	0	0	1	1	0
70	Sool	Caynabo	0	0	0	1	0	0	1	0	0
71	L. Juba	Badhaadhe	0	0	0	0	0	0	0	2	3
72	L. Shabelle	Sablaale	0	0	0	0	0	0	0	2	1
73	W. Galbeed	Berbera	0	0	0	0	0	0	0	0	1
74	Togdheer	Sheikh	0	0	0	0	0	0	0	0	0
TOTAL			23	240	41	46	15	58	423	442	401

